

Virtual Meeting
June 10, 2019

MAXIMIZE 2045
A PERFORMANCE-BASED TRANSPORTATION PLAN

WELCOME!

Monica Haines Benkhedda

Baltimore Metropolitan Council
Public Involvement Coordinator



Terry Freeland

Baltimore Metropolitan Council
Transportation Planner



TODAY'S AGENDA

- Who We Are
- Overview of the planning Process
- Call for Public Comment
 - *Maximize2045*
 - Transportation Improvement Program
 - Air Quality Conformity Determination
- How to share comments



maximize2045.com

TRANSPORTATION MATTERS; SO DOES YOUR OPINION.

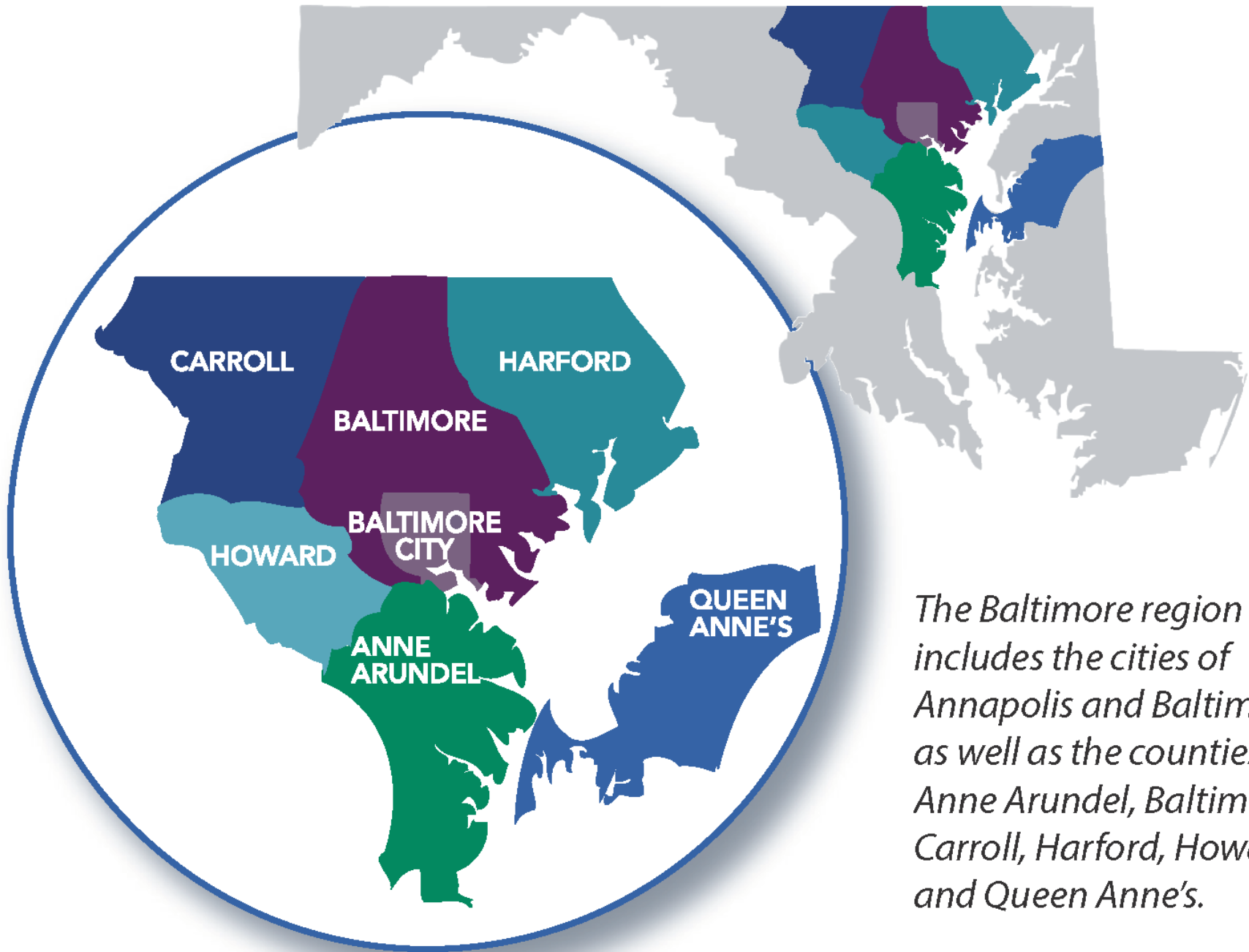
Over 200 transportation projects worth \$15 billion are planned for the region over the next 25 years.

Are we on the right track?

CHECK OUT OUR PLAN

Let us know what you think about our plans to invest in the future of transportation.

MAXIMIZE2045.com
A PERFORMANCE-BASED TRANSPORTATION PLAN



The Baltimore region includes the cities of Annapolis and Baltimore, as well as the counties of Anne Arundel, Baltimore, Carroll, Harford, Howard, and Queen Anne's.

WHO WE ARE

The Baltimore Metropolitan Council (BMC) is a nonprofit organization that works collaboratively with the chief elected officials in the region to create initiatives to improve the quality of life and economic vitality.

We bring people together for:

- events such as Bike to Work Day and What's on Tap
- emergency preparedness and regional cooperation
- watershed protection
- mapping / geographic information system (GIS) services
- forecasting demographics
- housing
- transportation planning
 - Baltimore Regional Transportation Board (BRTB)

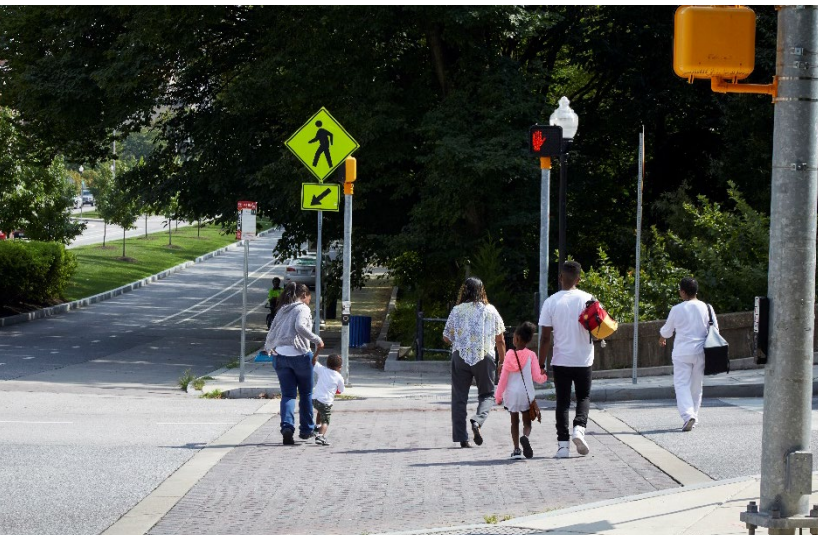


baltometro.org



**BALTIMORE
METROPOLITAN
COUNCIL**





WHO WE ARE

The Baltimore Regional Transportation Board (BRTB) is the Metropolitan Planning Organization (MPO) for the Baltimore region.

- Members:
 - Local elected officials
 - Representatives of state agencies
 - Local transit representative
- Decisions:
 - Regional goals and performance measures
 - Transportation funding
 - Projects and Studies

baltometro.org





About the Plans

Open for comment through June 18

GOALS

The BRTB developed the following set of guiding principles for the projects and programs considered in Maximize2045:



IMPROVE SYSTEM SAFETY

Make conditions safer for pedestrians, bicyclists, transit riders and operators, and motorists.



IMPROVE AND MAINTAIN THE EXISTING INFRASTRUCTURE

Improve the conditions of existing transportation facilities; systematically maintain and replace transportation assets as needed.



IMPROVE ACCESSIBILITY

Help people of all ages and abilities to reach specific destinations.



INCREASE MOBILITY

Help people and freight to move reliably and efficiently.



CONSERVE AND ENHANCE THE ENVIRONMENT

Pass on to future generations the healthiest natural and human environments possible.



IMPROVE SYSTEM SECURITY

Provide a secure traveling environment for everyone; improve the region's ability to respond to natural and man-made disasters.



PROMOTE PROSPERITY AND ECONOMIC OPPORTUNITY

Support the revitalization of communities, the development of activity centers, and the movement of goods and services.



FOSTER PARTICIPATION AND COOPERATION AMONG ALL STAKEHOLDERS

Enable all interested and affected parties to participate and cooperate to find workable solutions.



PROMOTE INFORMED DECISION MAKING

Ensure that adopted transportation policies and performance measures guide the regional decision making process.

PERFORMANCE MEASURES

BRTB has adopted performance measures and time-based targets in accordance with federal requirements

- Linked to broad regional goals
- Developed through a cooperative process with state agencies (MDOT State Highway Administration, MDOT Maryland Transit Administration)
- Performance measures and targets cover these categories:
 - roadway safety
 - transit safety
 - roadway asset management (pavement, bridges)
 - transit asset management (vehicles, facilities)
 - traffic congestion
 - emissions reduction
 - travel time reliability (including freight)



PLANNING FOR TOMORROW

Another key step in the process is to consider how the region will grow and change in the coming decades. This includes changes in population, where people live, and employment opportunities available to the workforce.



The Baltimore region is expected to add

12%
population
increase

**OVER
333,000
PEOPLE**

HOUSEHOLDS
will grow a rate of nearly

 **15%**

surpassing population growth leading to

SMALLER HOUSEHOLD SIZES



The region expects to see
**EMPLOYMENT
GROWTH**

**OF
28%**

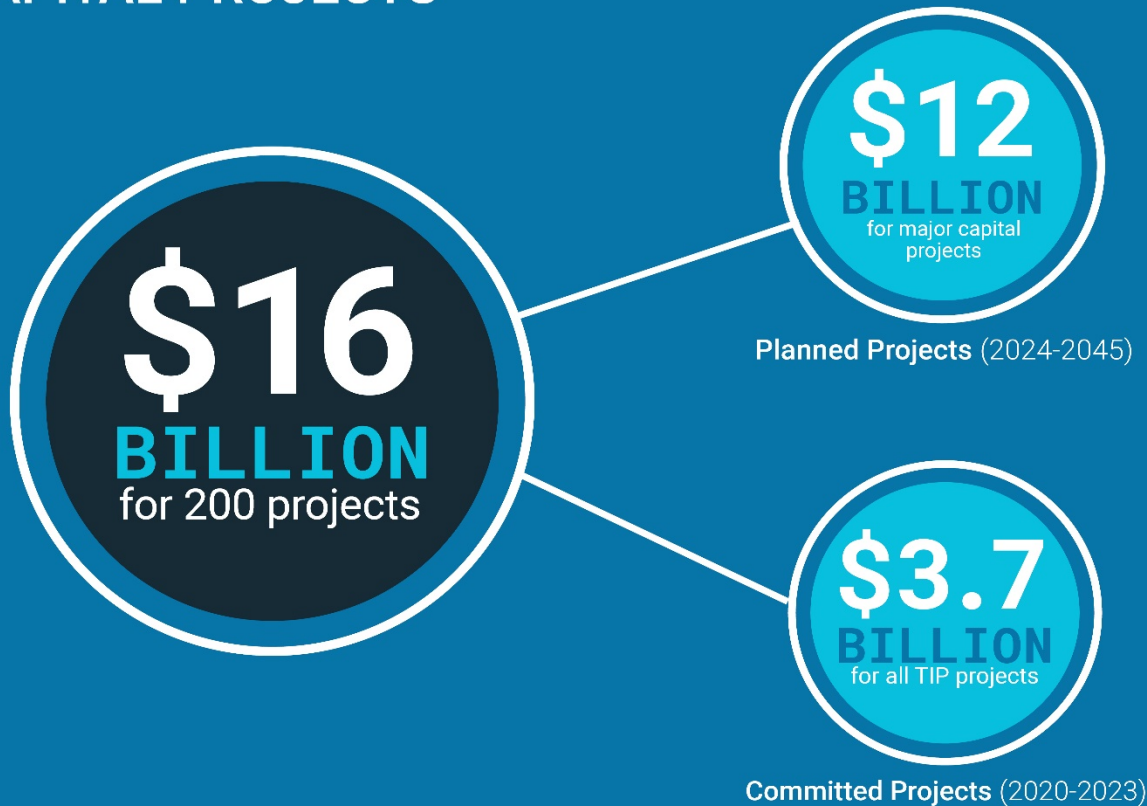


with over 461,000 jobs
being added

FUNDING MIX

The projects to be included in the 2020-2023 TIP and Maximize2045 must take into account the level of financial resources that can reasonably be expected to be available through 2045. Here is a breakdown of funding:

CAPITAL PROJECTS





FUNDING MIX

The projects to be included in the 2020-2023 TIP and Maximize2045 must take into account the level of financial resources that can reasonably be expected to be available through 2045. Here is a breakdown of funding:

SYSTEM OPERATIONS & PRESERVATION



ABOUT MAXIMIZE2045

A PERFORMANCE-BASED TRANSPORTATION PLAN

- Long-range transportation plan for the years 2024-2045
- Establishes regional goals / performance measures
- \$65 billion financial plan:
 - Operating the system (\$37 billion)
 - Maintaining the system (\$16 billion)
 - Building / Expanding (\$12 billion)
- List of projects – anticipated funds and schedules
- Long-range plan updated every 4 years



[Maximize2045.com](https://www.Maximize2045.com)



MAJOR CAPITAL PROJECTS

Types of major capital projects include adding lanes to a highway, building a new bicycle and pedestrian trail, rebuilding a bridge, or adding a new transit line. A few proposed projects include:



U.S. 50 Bus Rapid Transit line, New Carrollton to Parole



West Baltimore MARC station relocation



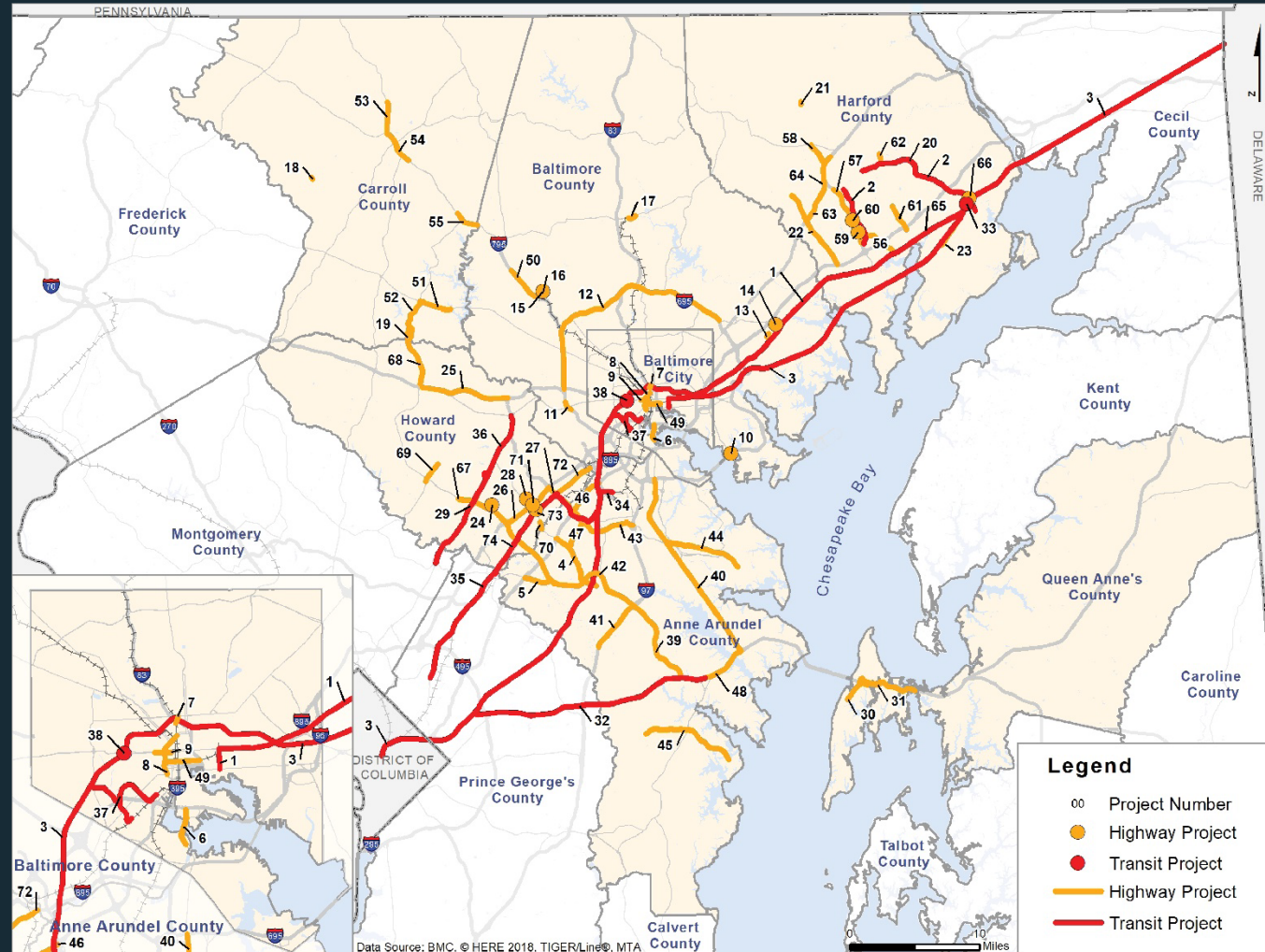
MD 295 (Baltimore-Washington Parkway) widening, MD 100 to I-95



I-70 widening
U.S. 29 to MD 32



I-695 hard shoulder running, I-70 to MD 43



ABOUT THE TIP

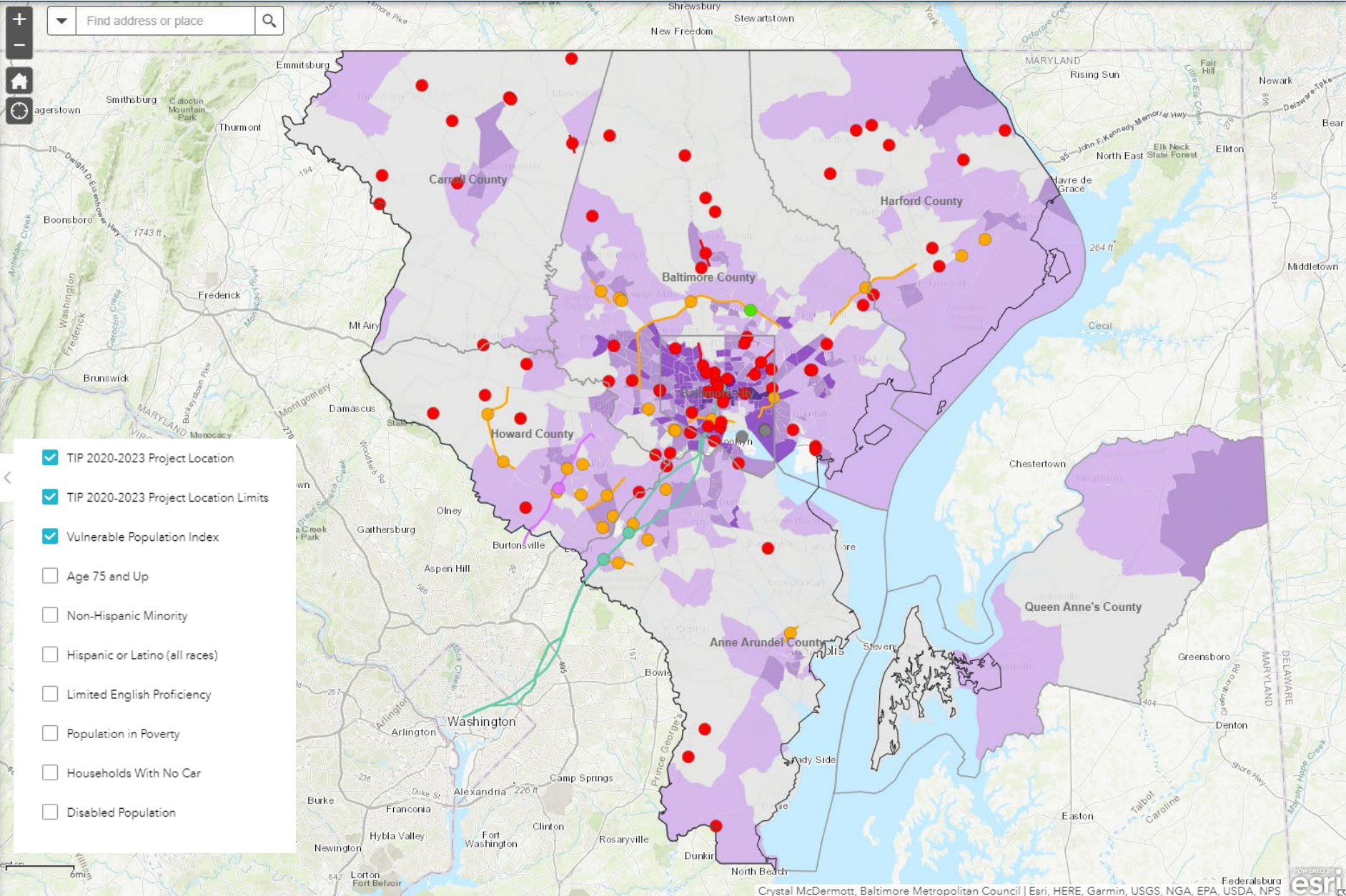
The Transportation Improvement Program (TIP) is a short range transportation plan.

- \$3.66 billion in funding for:
 - Operating the system (\$0.15 billion)
 - Maintaining the system (\$1.7 billion)
 - Building / Expanding (\$1.8 billion)
- Projects – Committed funds and schedules
 - Highway
 - Transit
 - Bicycle and pedestrian
- Updated every year – this TIP covers 2020-2023





2020-2023 TIP Project Viewer





2020-2023 TIP Project Viewer

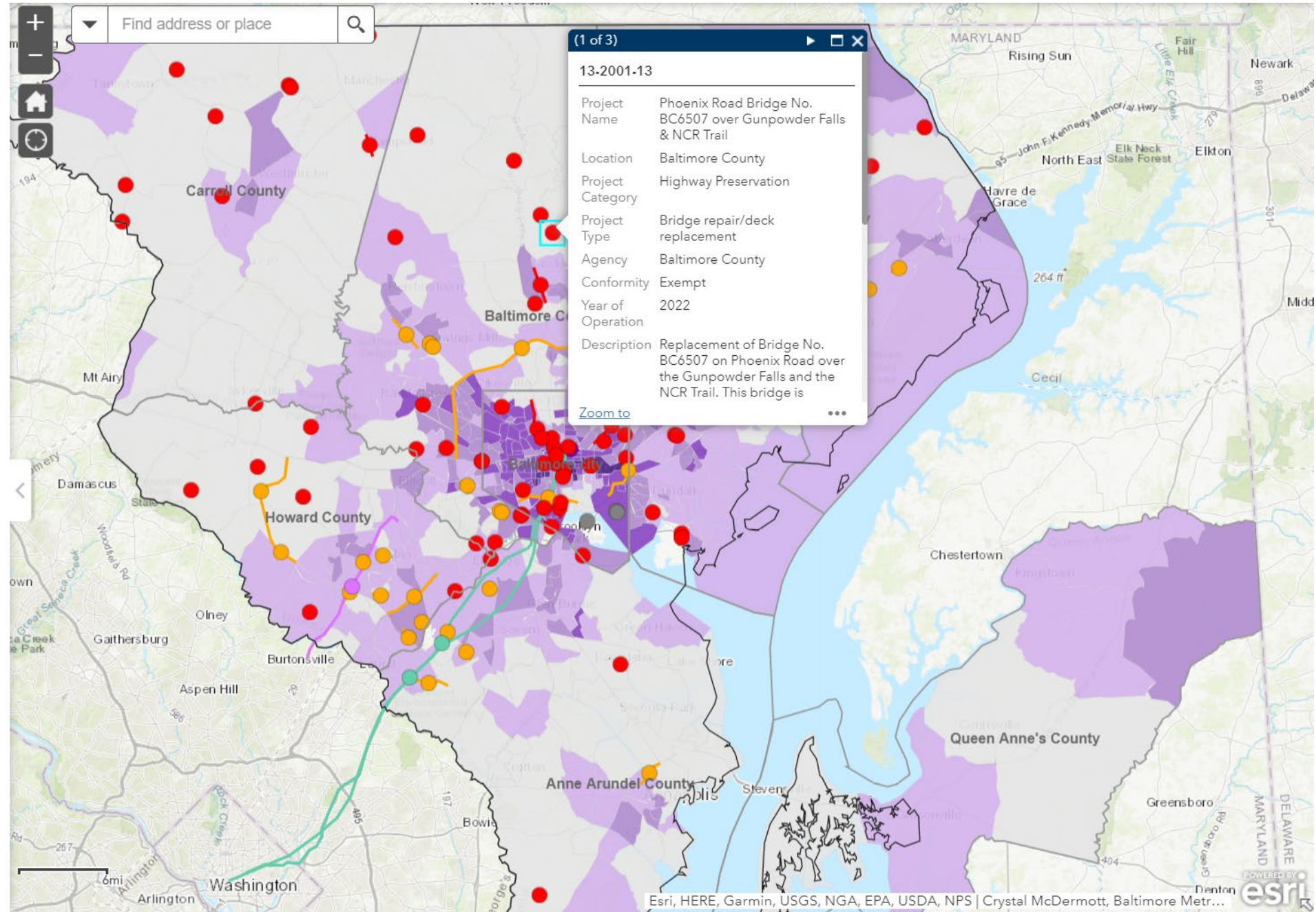
Find address or place

(1 of 3) ▶ □ ✕

13-2001-13

Project Name	Phoenix Road Bridge No. BC6507 over Gunpowder Falls & NCR Trail
Location	Baltimore County
Project Category	Highway Preservation
Project Type	Bridge repair/deck replacement
Agency	Baltimore County
Conformity	Exempt
Year of Operation	2022
Description	Replacement of Bridge No. BC6507 on Phoenix Road over the Gunpowder Falls and the NCR Trail. This bridge is

[Zoom to](#) ⋮



AIR QUALITY ANALYSIS

The Baltimore region has been designated as not meeting the National Ambient Air Quality Standards and so must review its current transportation plans and programs to ensure conformity with the State Air Quality Implementation Plan (SIP).

- The Baltimore region does not meet national air quality standards for ozone.
- Analysis looks at the possible effects of transportation projects on the region's air quality
- Report shows projects will not make air quality worse.



TRANSPORTATION MATTERS; SO DOES YOUR OPINION

SHARE YOUR THOUGHTS

Public comments are welcome through Tuesday, June 18 by:



EMAIL:

comments@baltometro.org



MAIL:

The Baltimore Regional Transportation Board
Attn: Public Involvement Coordinator
1500 Whetstone Way, Suite 300
Baltimore, MD 21230



TWITTER:

[@BaltoMetroCo](https://twitter.com/BaltoMetroCo)
[@BmoreInvolved](https://twitter.com/BmoreInvolved)
[#BRTBlistens](https://twitter.com/BRTBlistens)



ONLINE COMMENT FORM:

bit.ly/BRTBlistens



maximize2045.com





Thank You!
Questions/Comments?

Please take our post-meeting survey:
www.surveymonkey.com/r/33QQRBK