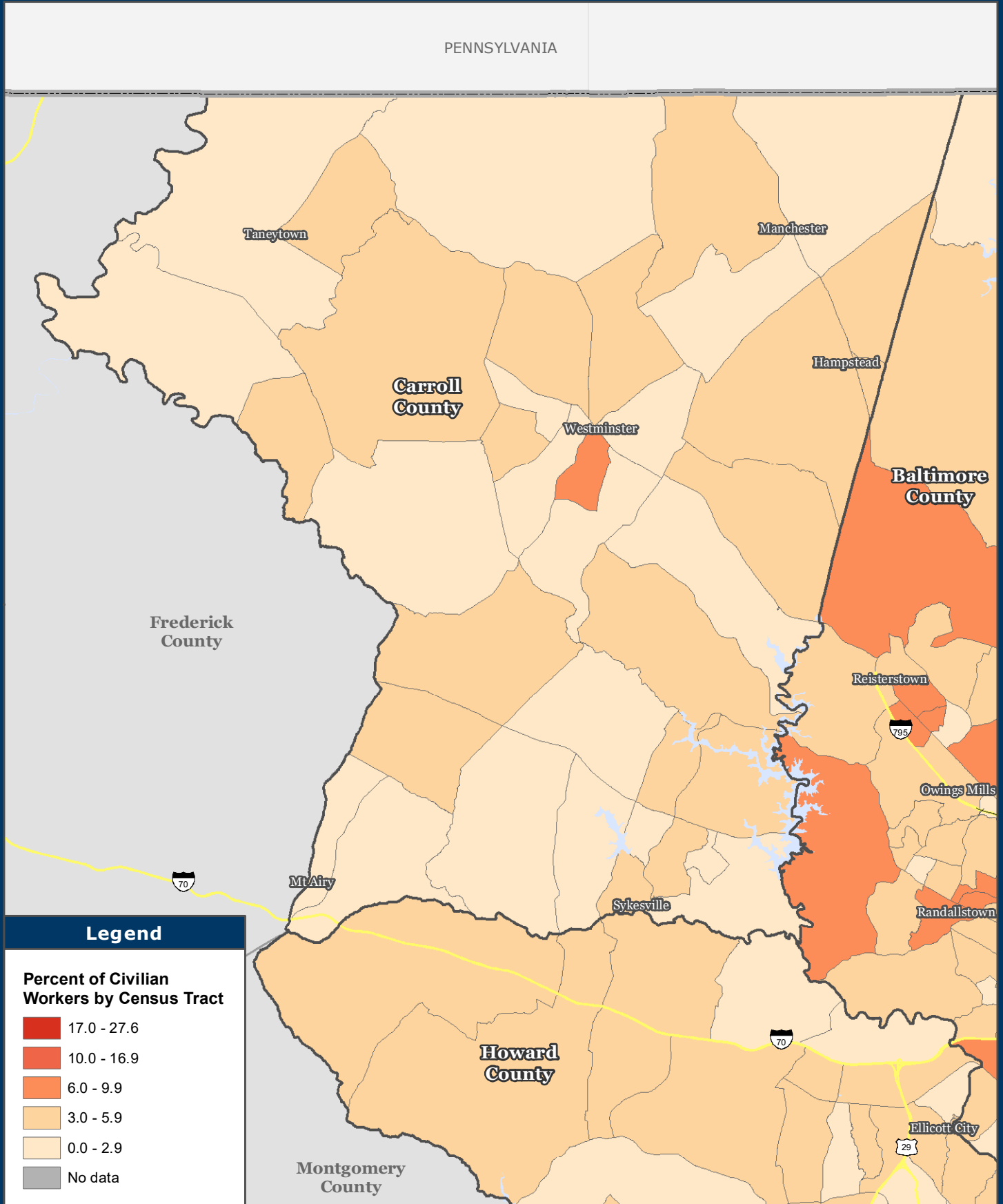


# Unemployed Civilian Workers

U.S. Census Bureau 2015-2019 American Community Survey 5-Year Estimates



## Legend

### Percent of Civilian Workers by Census Tract

- 17.0 - 27.6
- 10.0 - 16.9
- 6.0 - 9.9
- 3.0 - 5.9
- 0.0 - 2.9
- No data



**Baltimore Metropolitan Council**  
 1500 Whetstone Way, Suite 300  
 Baltimore, MD 21230  
[www.BaltoMetro.org](http://www.BaltoMetro.org)

Prepared by  
 Transportation Planning Division  
 Projected Coordinate System - NAD 1983 State Plane (ft)  
 Data Source - BMC, © HERE 2020, TIGER/Line®, MTA  
 June 2021



1:253,000  
 0 2 4 Miles

1 in = 4 miles