



---

# Transportation Alternatives (TA) Program FY 2026 Applications

Technical Committee / Interagency Consultation Group

July 1, 2025



# Transportation Alternatives Program



- **MDOT SHA Call for Projects – applications were due mid-May**
- **MDOT SHA and BMC reviewed all applications and conducted site visits as needed**
  - Transportation Alternatives (TA), Recreational Trails (Rec Trails) and Safe Routes to School (SRTS) projects.
- **Baltimore region urbanized area**
  - Three applications received, totaling \$4,909,413.57 in requests.
- **Aberdeen/Bel Air South/Bel Air North urbanized area**
  - One application received, requesting \$616,000.

# Baltimore Region

# Safe Routes to School Coordinator Position

## Anne Arundel County

**Type:** Non-Infrastructure

**Total Cost:** \$549,634.80

- Requested: \$439,707.84
- Match: \$109,926.96

**Summary:** Three years of funding for a SRTS Coordinator who will develop and implement education, engagement, and infrastructure projects to improve, encourage and increase the ability to safely walk or bike to school.

**Purpose:** Launch the County's SRTS Program in partnership with Anne Arundel Public Schools and other stakeholders with a focus on educating school staff, parents, and students about pedestrian; and bicycle safety and improving safety through a behavior and infrastructure-based approach.

# Safe Routes to School Coordinator Position

## Howard County

**Type:** Non-Infrastructure

**Total Cost:** \$416,904

- Requested: \$332,904
- Match: \$84,000

**Summary:** Three years of funding for a SRTS Coordinator in the Howard County Office of Transportation focused on Howard County Public Schools who will build partnerships and collaborations to improve the safety of biking and walking.

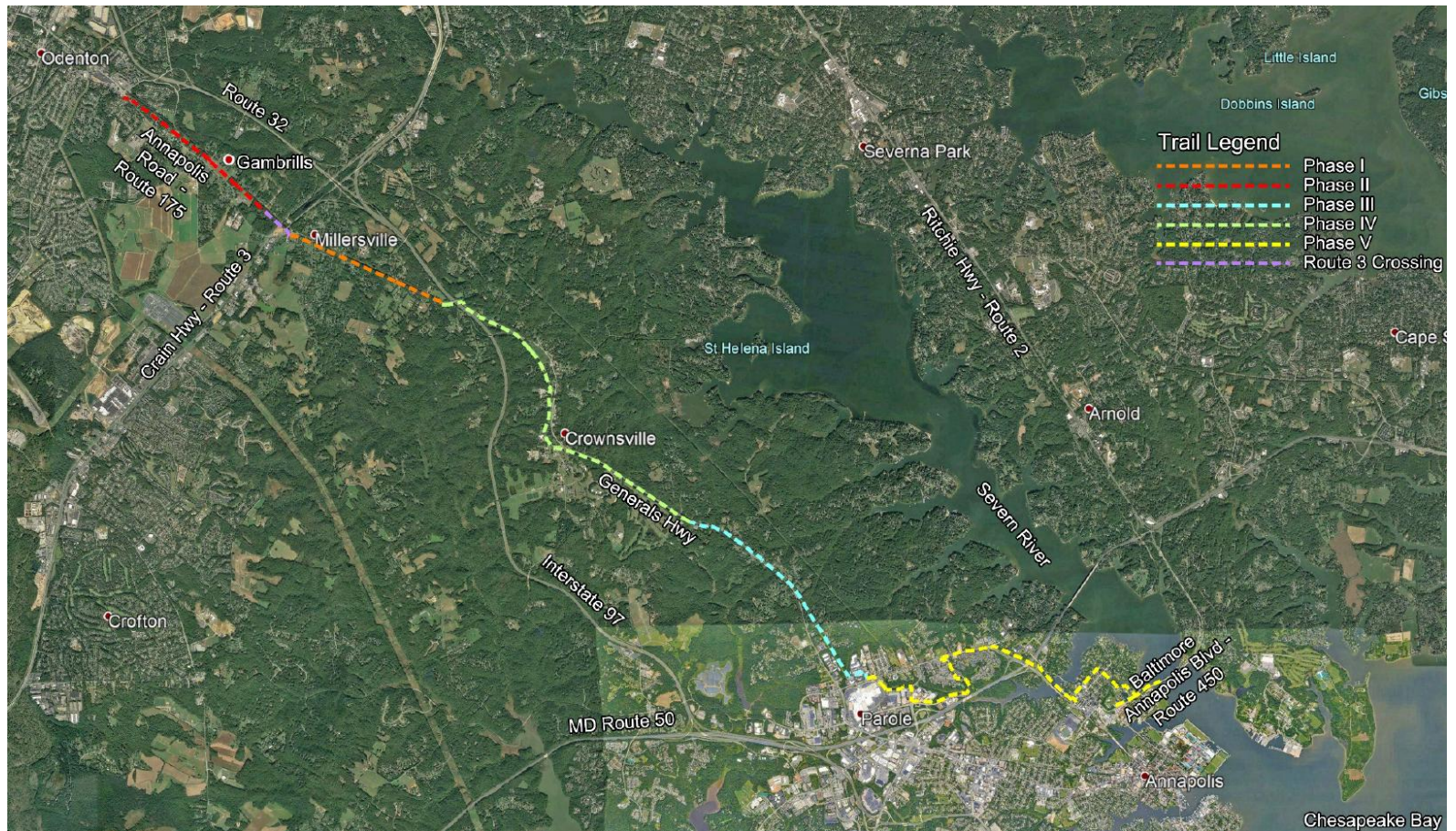
**Purpose:** Improve the safety of walking and biking to school, increase the number of students walking and biking to school, and decrease the number of students being transported to school by private automobile. Changing the culture from a driving default to an embrace of walking and biking will be the key path to success.



# South Shore Trail Phase III

## Honeysuckle Lane to Bestgate Road

### Anne Arundel County



# South Shore Trail Phase III

## Honeysuckle Lane to Bestgate Road

### Anne Arundel County

**Type:** Construction

**Total Cost:** \$5,171,000.91

- Requested: \$4,136,800.73
- Match: \$1,034,200.18

**Summary:** Construct a 10-foot wide, 2.36-mile, asphalt shared-use path from Honeysuckle Lane to Bestgate Road. The South Shore Trail Phase III will be for walkers, runners, and bicyclists.

**Purpose:** Continue building the South Shore Trail and provide pedestrians and bicyclists an additional length of trail to traverse.

# Aberdeen/Bel Air South/ Bel Air North



# US 40 Shared-Use Path

Aberdeen Train Station to City of Havre de Grace  
Harford County



# US 40 Shared-Use Path

Aberdeen Train Station to City of Havre de Grace  
Harford County

**Type:** Design

**Total Cost:** \$770,000

- Requested: \$616,000
- Match: \$154,000

**Summary:** Complete 30% design of a 10-foot wide, 5.1-mile, asphalt shared-use path from Aberdeen Train Station to Erie Street in Havre de Grace.

**Purpose:** Create a dedicated, separated, low-stress facility for cyclists and pedestrians that connects key destinations between the Aberdeen Train Station and Erie Street in Havre de Grace. This corridor, a busy four-lane divided highway with over 26,000 vehicles daily and speed limits ranging from 30 to 55 miles per hour, currently lacks adequate, safe infrastructure for non-motorized travel.

# For more information

---

**Charlene Mingus** | Active Transportation Planner  
410-732-0500 x1008 | [cmingus@baltometro.org](mailto:cmingus@baltometro.org) | [www.baltometro.org](http://www.baltometro.org)



@BALTOMETROCOUNCIL



@BALTIMORE METROPOLITAN COUNCIL



@BALTIMORE METROPOLITAN COUNCIL

