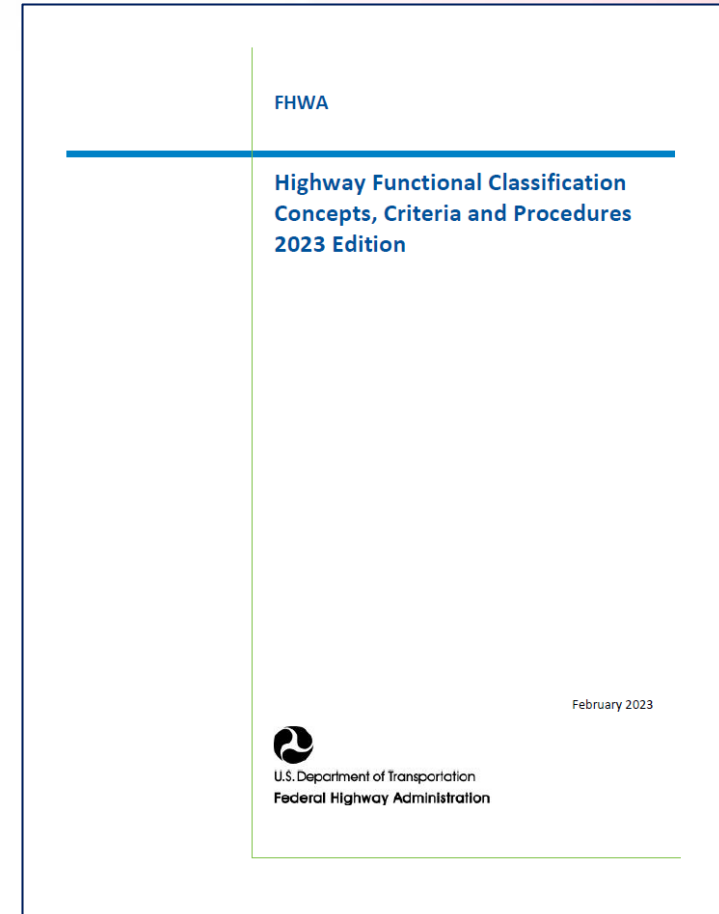


# **2020 CENSUS URBAN AREA BOUNDARY ADJUSTMENT**

**Darren Bean**  
**Assistant Regional Planner**  
**December 4, 2023**

# WHY ADJUST URBAN AREA BOUNDARIES

- Align with existing planning boundaries
- Address irregularities in Census Urban Areas
- Maintain consistency with highway functional classification system
- Impacts funding for Federal-Aid Highway System

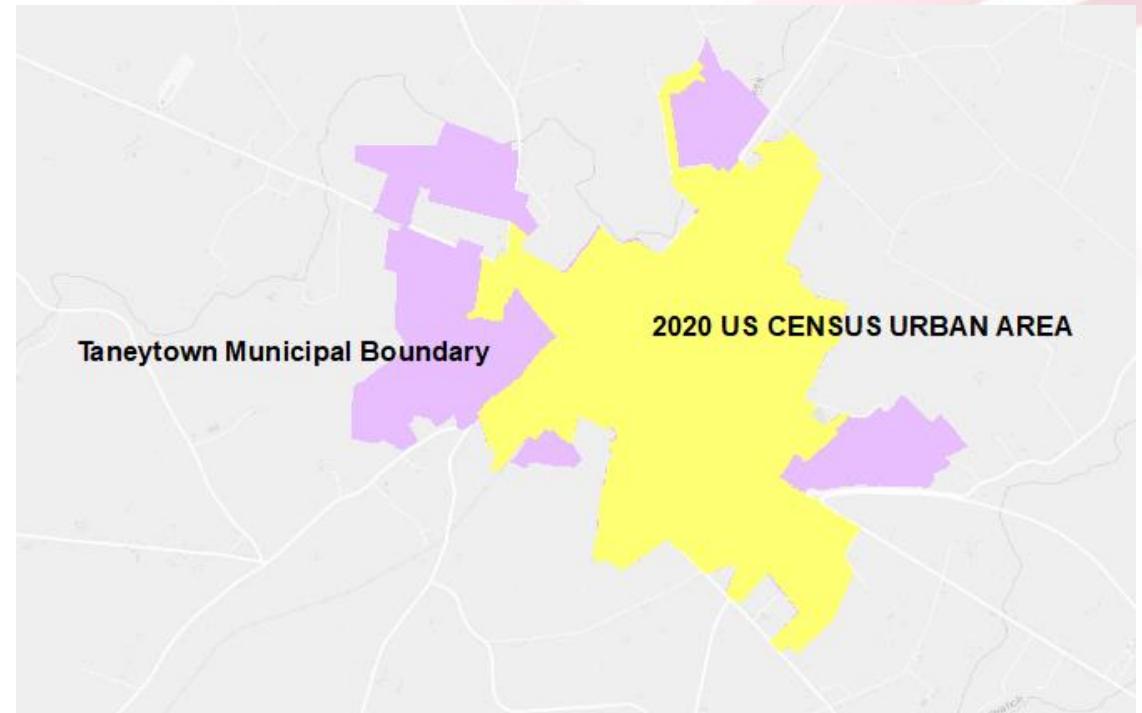


# FEDERAL-AID HIGHWAY SYSTEM IMPACT

Functional Class System	Urban	Rural
1 - Interstate	Yes	Yes
2 - Principal Arterial - Other Freeways and Expressways	Yes	Yes
3 - Principal Arterial - Other	Yes	Yes
4 - Minor Arterial	Yes	Yes
5 - Major Collector	Yes	Yes
<b>6 - Minor Collector</b>	<b>Yes</b>	<b>No</b>
7 - Local	No	No




# FHWA ADJUSTMENT GUIDELINES

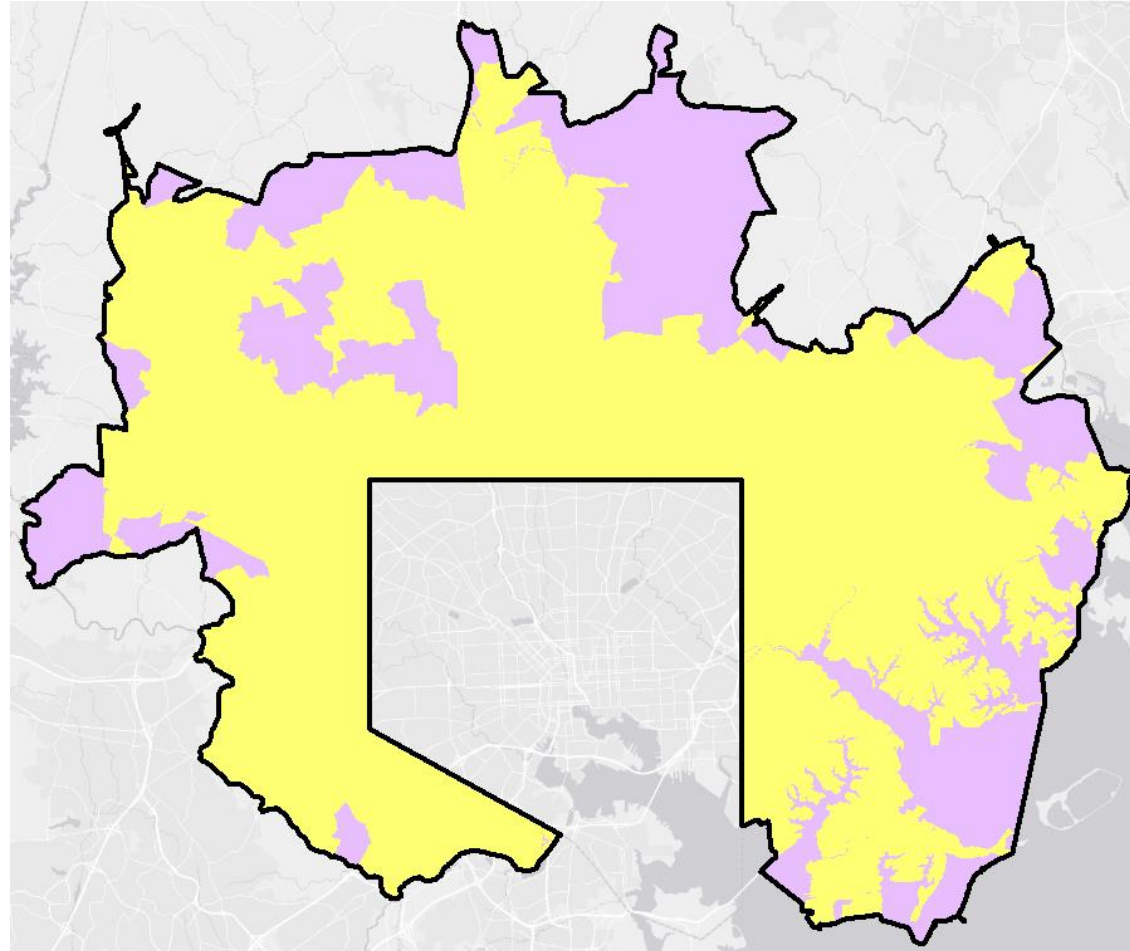
- Boundaries should encompass the entire Census Urban Area
- Boundaries should encompass one contiguous area
- Boundaries should be simple without irregularities
- Boundaries should follow municipal boundaries or other physical features
- Boundaries should include areas with urban characteristics (ex. commercial areas)



# ADJUSTED URBAN AREA BOUNDARY

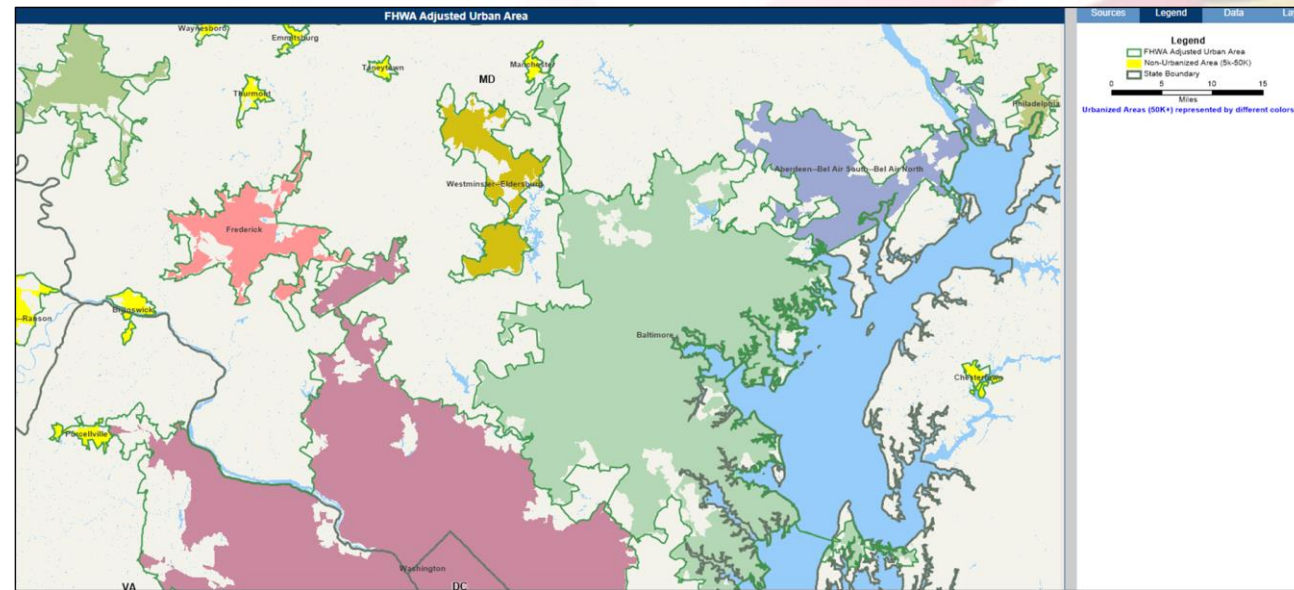
Legend:

-  Urban Area Boundary
-  2020 Census Urban Area
-  Additions



# NEXT STEPS

- Submit to FHWA for review by December 27, 2023
- Begin process to review functional classification of roadways



<https://hepgis.fhwa.dot.gov/fhwagis/ViewMap.aspx?map=MPO+Boundaries|FHWA+Adjusted+Urban+Area>