



Transportation and Land Use Connections Competitive Grant Program

ROUND 2

November 7, 2023



Transportation & Land Use Connection Grant Program

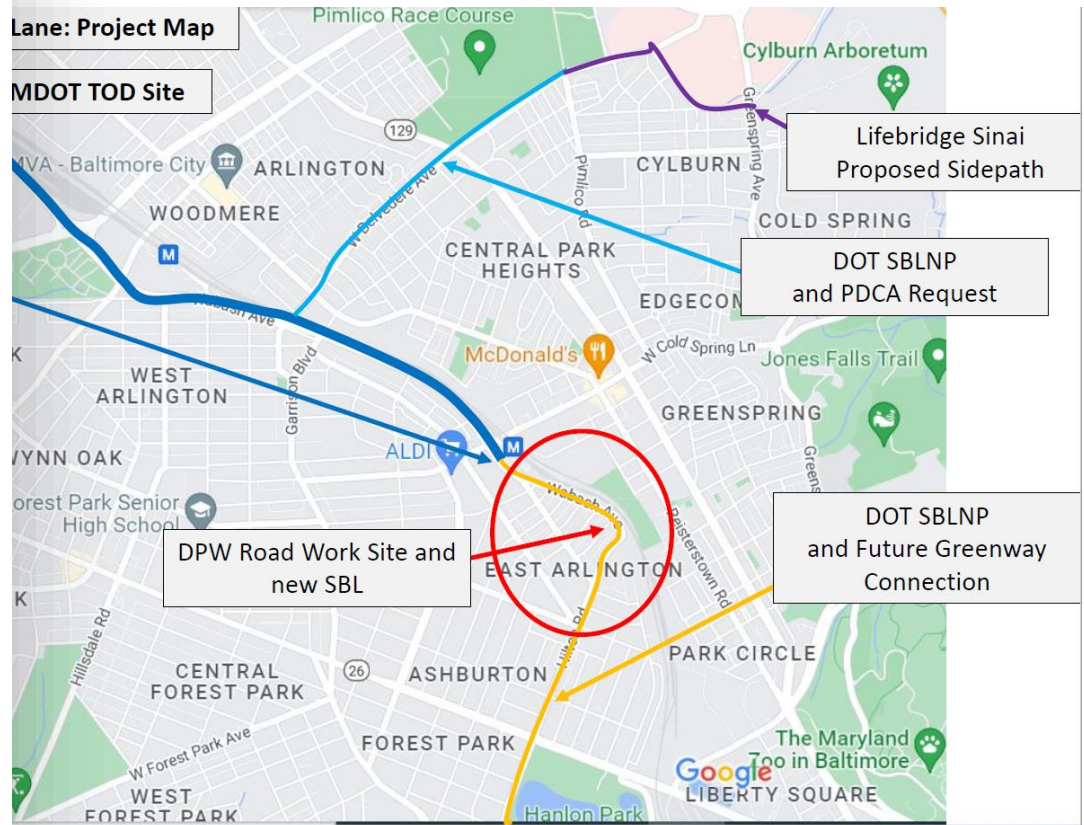
1

Round 1 –

Wabash Avenue

Design
project

City – Wabash Avenue

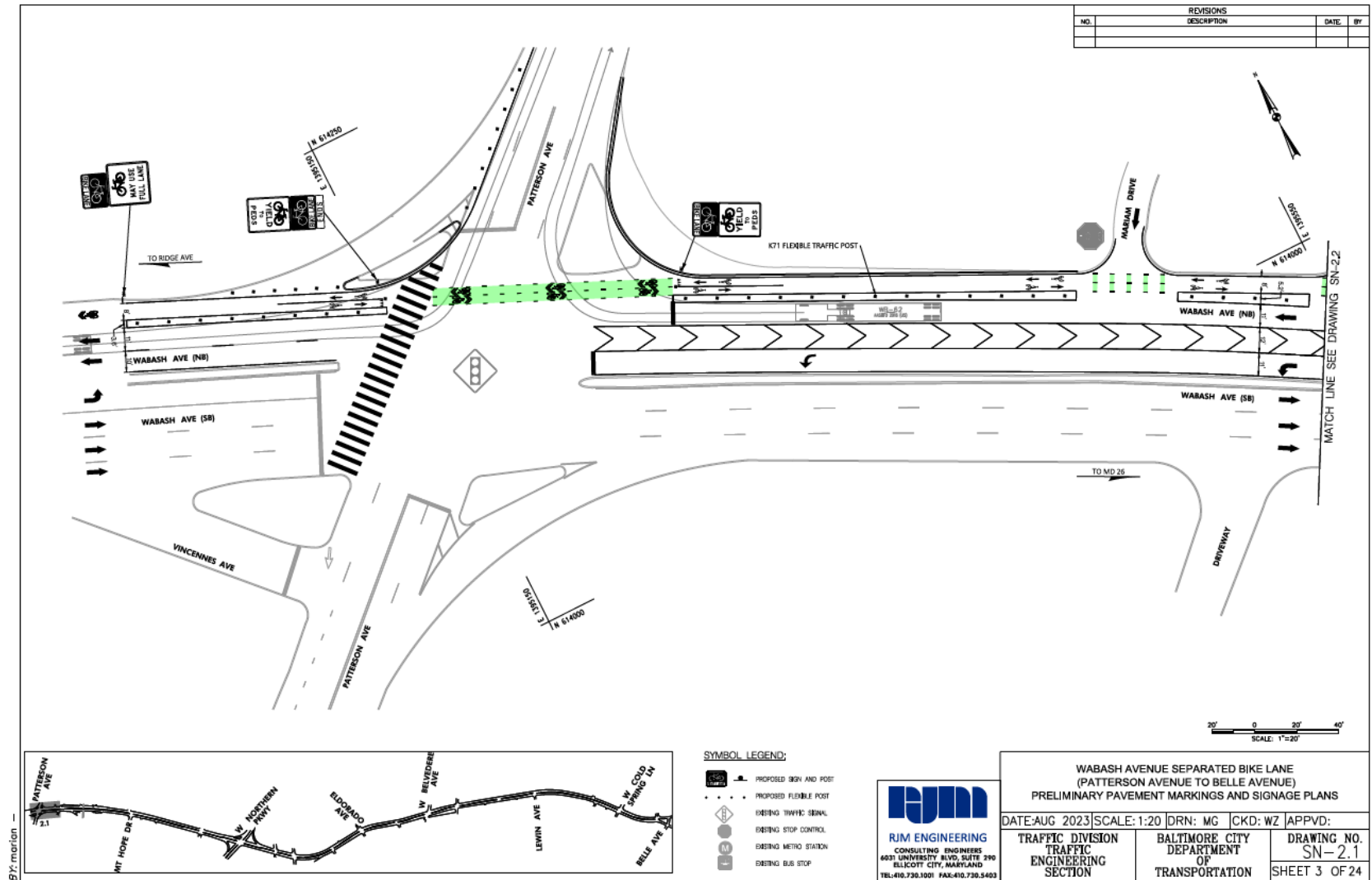




Baltimore City – Wabash Avenue

- Preliminary design for a two-mile, “all ages” separated bicycle facility on Wabash Avenue from Patterson Avenue and the Reisterstown Plaza Metro Station
- Adopted in the Separated Bike Lane Network Plan in 2017 and designated the corridor for a separated bike facility
- MDOT designated the Reisterstown Plaza area as a Transit-Oriented Development (TOD) site
- Project to connect to upgraded bicycle facilities at the West Cold Spring Metro Station.
- City working extensively with community.
- Project completed fall of 2023. Typicals for the Wabash Avenue Separated bike lane facility were provided, awaiting a final report.

Baltimore City – Wabash Avenue



Transportation & Land Use Connection Grant Program

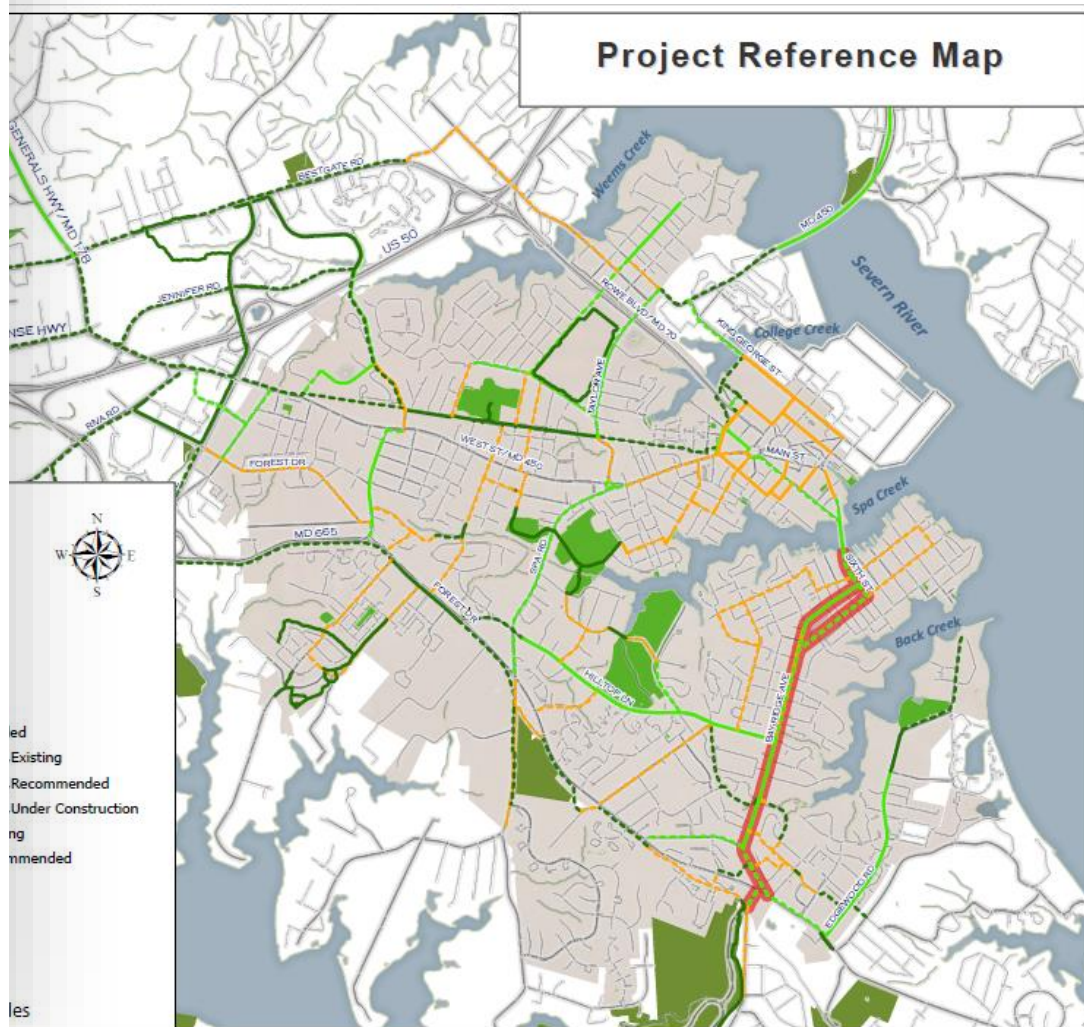
2

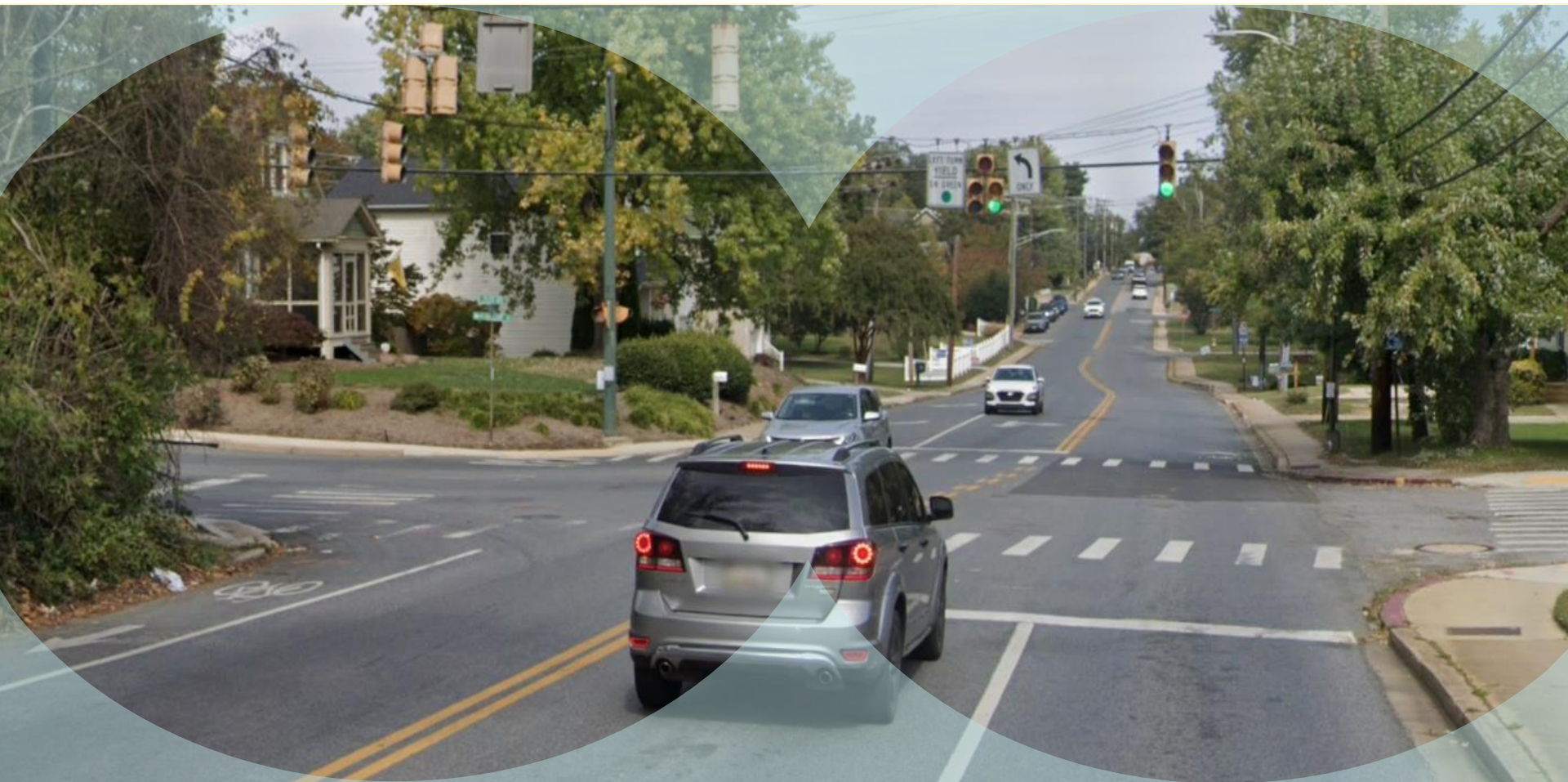
Round 1 –

Bay Ridge
Avenue

Design
project

– Bay Ridge Avenue

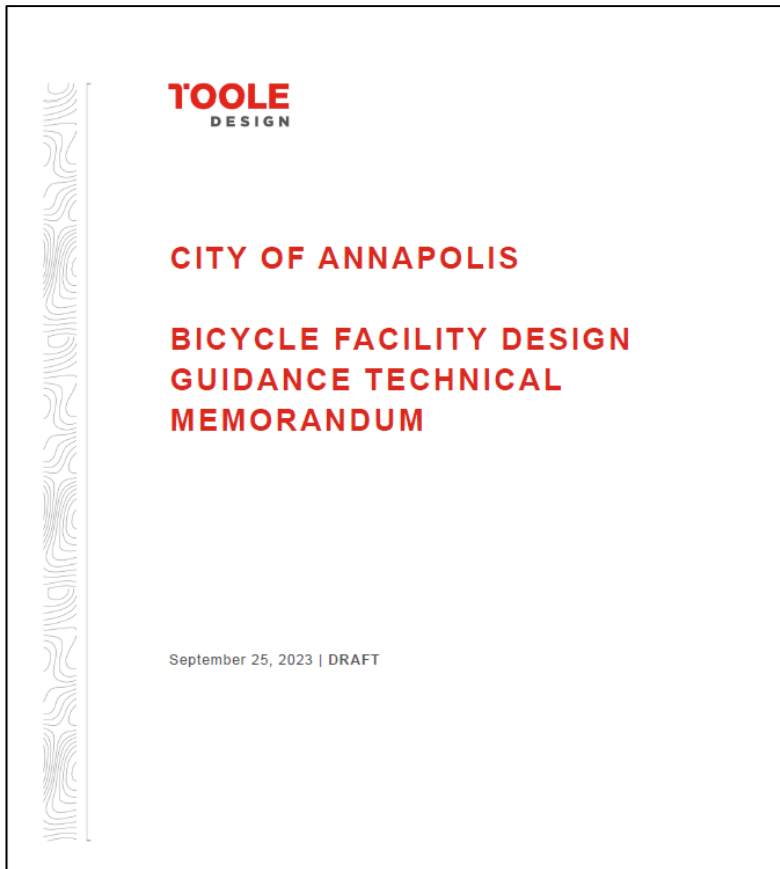




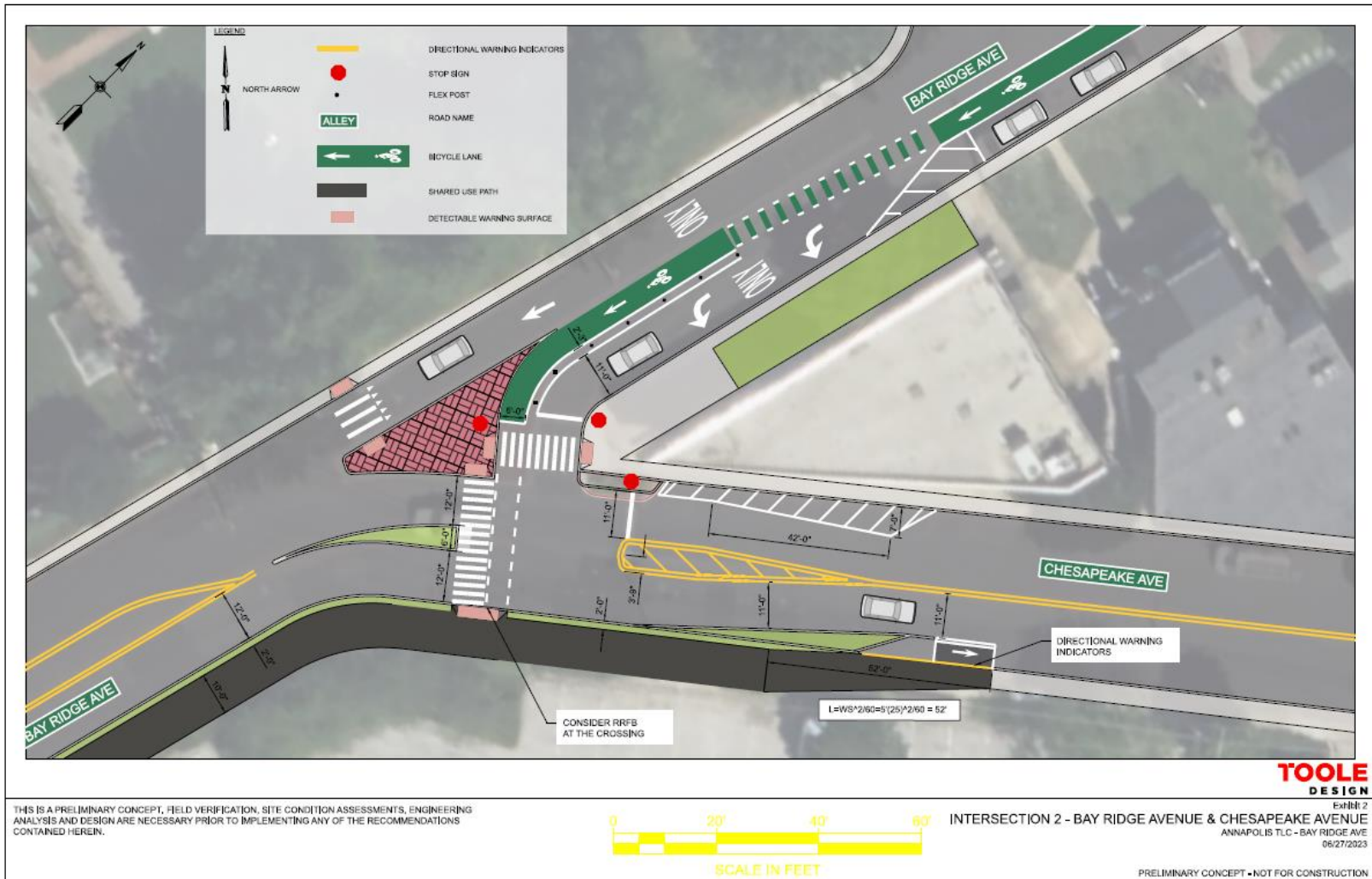
Annapolis – Bicycle Safety Design Study and Bay Ridge Avenue Retrofit

- Design guidelines and Concepts for the a ~1.9 mile corridor.
- Planning & design of various alternatives for protected on-street bike lanes for the first protected bike lane in Annapolis along the Bay Ridge Avenue corridor, from the Spa Creek Bridge to Quiet Waters Park.
- Project intended as a proof of concept of the potential of protected bike lanes in Annapolis and elsewhere.
- Corridor runs through an area that is being redeveloped as part of a Choice Neighborhood Initiative (CNI) project funded by HUD
- Project demos feasibility/proof of concept, provided guidance on best practices, and address the Bay Ridge Avenue corridor as case study.
- Project awarded Bike/Ped grant to continue toward 30% design.

Annapolis – Bicycle Safety Design Study and Bay Ridge Avenue Retrofit



Annapolis – Bicycle Safety Design Study and Bay Ridge Avenue Retrofit



Transportation and Land Use Connection (TLC) Grant Program – OPENING OF ROUND 2

Today's Discussion

- Program priorities & focus
- Eligibility
- Types of assistance
- Application process
- Scoring criteria
- Schedules

Eligibility & Support

Eligibility

- Local jurisdictions that are voting members of the BRTB
- Inter-agency and inter-jurisdictional partnerships encouraged

Support

- Successful proposals will demonstrate strong local support.
- Applications for planning or preliminary design must implement features of a locally approved plan or project, support the funding priorities outlined above and fall into one of the two types of projects described below.

Project types

- Technical assistance for planning or preliminary design (up to 30%) that support local plans and help implement changes to the built environment that reduce traffic on roads and address one or more regional funding priorities.

Type of Assistance

- Short-term consultant services for eligible planning and preliminary design projects, generally up to 1 year in duration
 - Maximum of \$100,000 towards
- Recipients will not receive direct financial assistance.
- A pre-qualified pool of consultants has been selected to perform the work via a Request for Qualifications

For More Information

Keith Kucharek | Transportation Planner

410-732-0500 x1020 | kkucharek@baltometro.org | www.baltometro.org

Don Halligan | Senior Transportation Planner

410-732-0500 x1002 | dhalligan@baltometro.org | www.baltometro.org

