

# Baltimore Regional Transportation Board Equity Scan

BRTB Technical Committee May 2, 2023



# Equity Scan Discussion Agenda

---

- Welcome and Introductions
- Equity Scan Purpose and Process
- Transportation CORE Ideas
- Preliminary Recommendations
- Facilitated Group Discussion







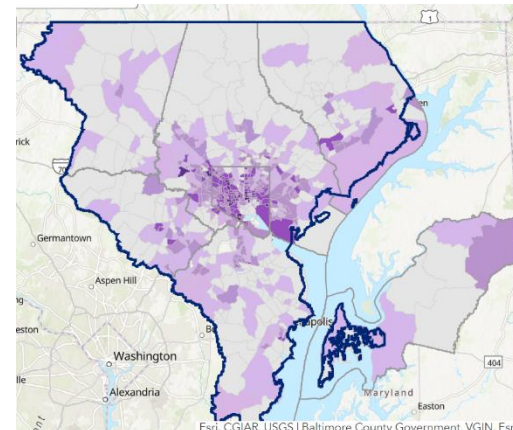
# Equity Scan Purpose and Process



# Equity Scan Purpose

On behalf of BRTB, BMC is identifying strategies to deepen its commitment to equity through four key transportation planning activities:

- Unified planning work program (UPWP)
  - Funds **plans, studies**, and analysis tools
- Long-range transportation plan (LRTP)
  - Includes **needs assessments** and long-range **funding** plan for high-priority **investments**
- Transportation improvement program (TIP)
  - Includes short-range **funding** program for selected **investments**
- Public participation plan (PPP)
  - Guides **engagement** with the public and key stakeholders



# Equity Scan Process

---

## **BRTB Internal Scan (Nov 2022 – Feb 2023)**

- ✓ Review key BRTB plans: LRTP, TIP, UPWP, PPP
- ✓ Conduct four interviews with BMC staff
- ✓ Complete a white paper summarizing internal scan results

## **Peer MPO Scan (Dec 2022-April 2023)**

- ✓ Review LRTPs, TIPs, UPWPs, and PPPs of 20 peer MPOs
- ✓ Conduct five interviews with peer agency staff
- ✓ Complete a white paper on peer agency best practices
- ✓ Discuss findings with BRTB Technical Committee

## **Recommendations (April 2023-June 2023)**

- Brainstorm potential recommendations with BMC Transportation Core (4/26/23)
- **Discuss potential recommendations with BRTB Technical Committee (5/2/23)**
- Discuss draft recommendations with BRTB Policy Board (5/23/23)
- Fine-tune recommendations and implementation steps with BMC staff (June 2023)





# Transportation CORE Ideas



# Transportation CORE Meeting- April 26<sup>th</sup>

- Environmental Justice “101” Video Pop Quiz
- Equity Scan Overview
- Ideas for Advancing Equity
  - Plans and Studies
  - Needs Assessments
  - Funding Decisions
  - Public Participation

Assess how to increase public transit corridors where traffic is most congested★	Figure out how to connect paratransit services across/ between counties. See explanation on 3 stickies below★	Ask colleges to have students do projects of their choice. - Research projects, etc. Students working on this from an equity standpoint, also disability communities
Expand DC Metro up to Laurel then Howard County right into Baltimore ★	1) Each jurisdiction with paratransit funds runs its own service (RTA mobility, metro access, for example). They don't interconnect, so to use these services, you have to ...	work with local and state agencies as emerging technologies are implemented to ensure they are equitable
Consider reviving Red Line out to West Baltimore ★	2) apply for each individual one, and the passes are temporary. Can only use Metro Access for 21 days at a time, for example; if you need longer, you have to reapply.	ensure underserved communities are not unfairly negatively impacted by climate change/environmental impacts
More TOD - Transit - Oriented Development	3) As a paratransit user, you're almost "confined" to your own county. Takes a toll on housing, employment opportunities.	Green solutions; electric vehicles - school and commuter buses★★★
study ways to encourage younger folks to utilize public transportation		

# Transportation CORE Feedback: Plans & Studies

---

Research green solutions:  
electric vehicles, school  
and commuter buses.

Study reviving Red Line out  
to West Baltimore and  
extending DC metro to  
Laurel/ Howard/ Baltimore.

Assess how to increase  
public transit in corridors  
where traffic is most  
congested.

Assess how local and state  
agencies can implement  
emerging transportation  
technologies in an  
equitable way.

Partner with colleges and  
universities on equity-  
related research

Plan strategies to  
interconnect local  
paratransit services



# Transportation CORE Feedback: Needs Assessments

---

Modify tools to include more diverse groups.

Conduct a large-scale survey of transportation needs of underserved communities.

Make equity analysis tools more accessible

Focus on moving people instead of cars; remove vehicle-oriented bias

Coordinate with other agencies to embed transit-related questions into their needs assessments...and/or to see data they've collected on this front

Incorporate analyses and data on housing, health, other related areas.

# Transportation CORE Feedback: Funding

---

Hold Real Estate Developers accountable for genuine contributions to public transit projects.

Develop a formal process for prioritizing transportation investments in historically redlined areas of Baltimore City.

Keep an eye out for federal funding. Especially with the infrastructure bill, there is federal funding that BMC could use.

Look for non-property tax sources of funding.

Focus on funding simple solutions to address safety in equity areas and other “low-hanging fruit” with immediate impacts.

Leverage funding from other agencies/depts whose success depends on equitable transit...schools? healthcare institutions?

# Transportation CORE Feedback: Public Participation

---

Compensate public participants (e.g., paid focus groups).

Engage with local nonprofits and community groups that are in touch with individuals.

Provide childcare at outreach events, and child engagement opportunities to get families involved.

Use outreach that is equitable for everyone. Balance online with in-person approaches.

“Nothing about us without us:” engage marginalized communities in developing solutions.

Part of the struggle in getting people involved is, once people mobilize to make change, ideas are vetoed and progress is slow. Challenge to keep people motivated.





# Preliminary Recommendations

# Snapshot of Current BMC/BRTB Activities

---

Unified Planning Work Program	Study undue burdens of transportation fares, fees and fines on disadvantaged populations Conduct Equity Scan (this project)
Long-Range Transportation Plan	Analyze locations and characteristics of vulnerable populations Incorporate equity-related criteria in project selection
Transportation Improvement Program	Conduct EJ analysis of TIP projects Incorporate equity-related criteria in project prioritization
Public Participation Plan	Update PPP with more robust equity considerations Every Day Counts Academy Transportation CORE

# UPWP Preliminary Recommendations

---

Fund a large-scale survey of the transportation needs of underserved communities.

Evaluate the potential impacts of emerging technologies on different populations.

Study the effects of past transportation decisions on current inequities.

Fund study to address transportation safety in equity areas.



# LRTP Preliminary Recommendations

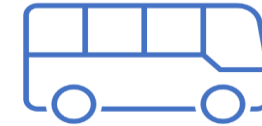
---



Create a shared definition of equity supported by goals and strategies to advance equity through MPO policies, practices, and activities



Develop LRTP Project selection criteria that address equity-related concerns (e.g., bike/ped safety, access to transit)



Prioritize equitable multimodal transportation access to affordable housing, health care, and other essential destinations.

# TIP Preliminary Recommendations

---



Increase involvement and input from overburdened communities



Develop graphics to highlight equity related projects.



Consider grant funding from Bipartisan Infrastructure Bill to fund a mapping project with MTA to identify new transit locations for TIP analysis.



Add Equity Criteria within the existing TIP submittal process.



Analyze distribution of benefits and burdens generated by TIP investments

# PPP Preliminary Recommendations

---

## Create

Create maps, databases, and performance measures to identify and track engagement with high-priority communities and populations

## Study

Study ways to expand opportunities for underrepresented populations to participate in the transportation planning process

## Engage

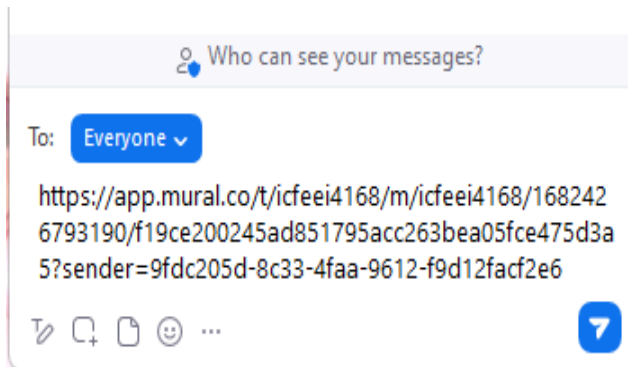
Work with agency partners to leverage engagement in local or state initiatives (e.g., City of Baltimore Reconnecting Communities “bridge to nowhere” project)



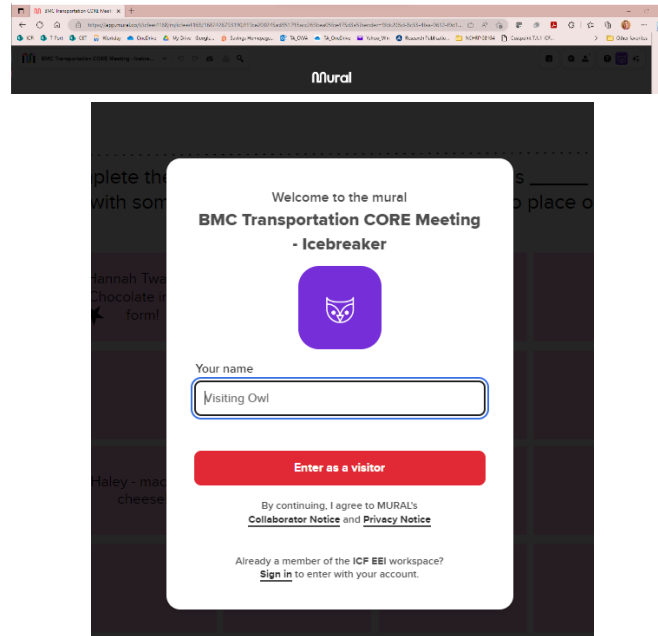


# Group Discussion

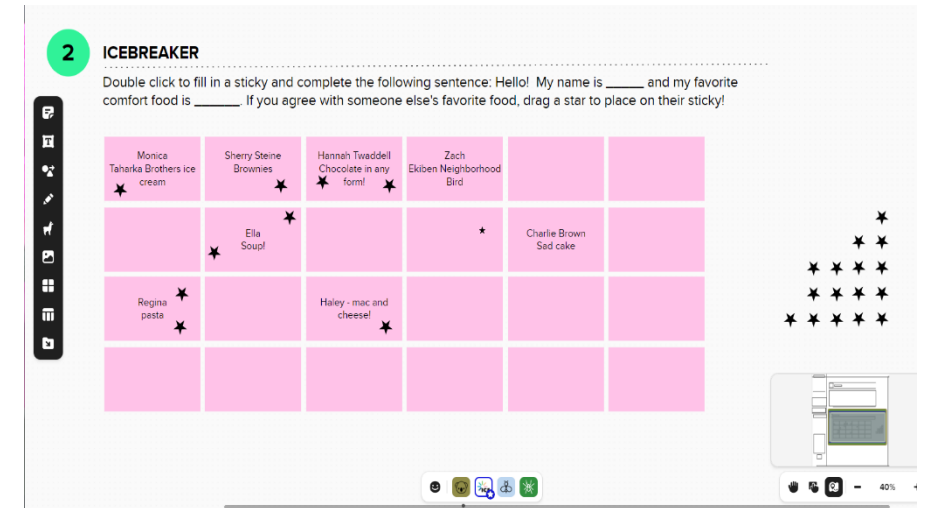
# Mural Whiteboard: Easy as 1, 2, 3



1) Click or copy/paste the link in the chat to open it in a browser (*Edge or Chrome will work best*)



2) Select "enter as a visitor"



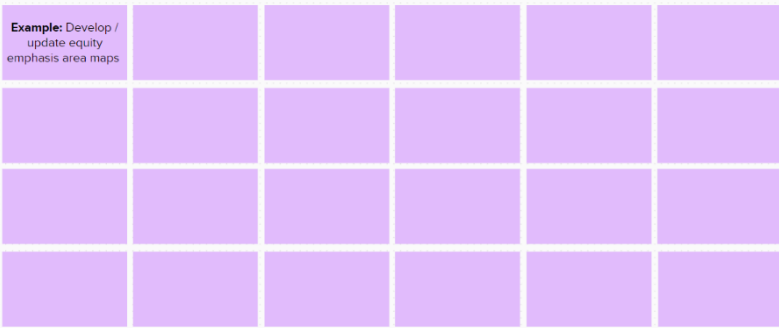
3) Double-click on a square to type your idea, and drag stars over to "like" other ideas



# Discussion Topics

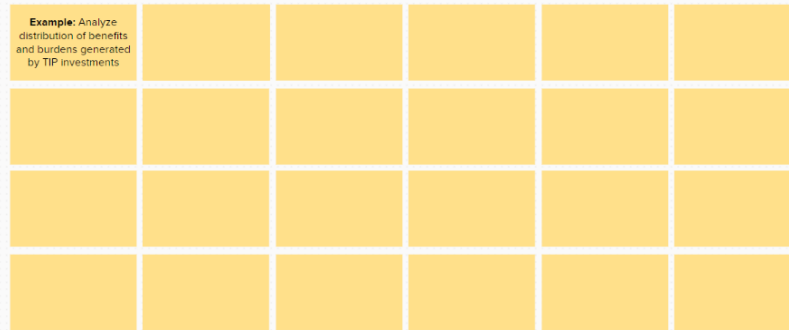
**Unified Planning Work Program:** *Think about advancing equity through UPWP-funded plans, studies, research, models, datasets and outreach addressing mobility, accessibility, connectivity, safety, and environmental issues.*

Example: Develop / update equity emphasis area maps



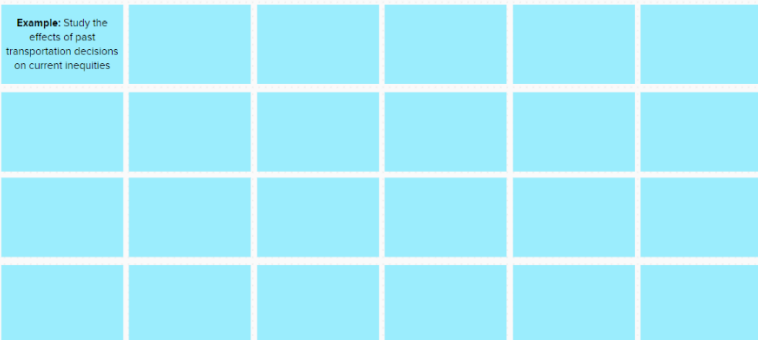
**Transportation Improvement Program:** *Think about advancing equity in, for example, policies and decision-making processes for prioritizing funds for projects that address different modes, geographic locations, or population groups.*

Example: Analyze distribution of benefits and burdens generated by TIP investments



**Long-Range Transportation Plan:** *Think about advancing equity in, for example, the indicators, data sources, modeling tools, and engagement processes for identifying long-range transportation needs, evaluating alternative solutions, and prioritizing projects.*

Example: Study the effects of past transportation decisions on current inequities



**Public Participation Plan:** *Think about advancing equity by engaging the public and stakeholder groups in regional planning and decision making, considering the whole spectrum from the bottom-up [individual/ neighborhood/ local] and the top-down [federal, state, region] perspectives.*

Example: Establish and track performance measures for equitable engagement

