

# FUNCTIONAL CLASSIFICATION CHANGE: MD 553

# FUNCTIONAL CLASSIFICATION: OVERVIEW AND CHANGE

- 1) Functional Classification - FHWA
- 2) MD 553 Functional Classification Change



U.S. Department of Transportation  
Federal Highway Administration

## Highway Functional Classification Concepts, Criteria and Procedures



*2013 Edition*

# FUNCTIONAL CLASSIFICATION

- **FHWA: The functional classification of roadways defines the role each element of the roadway network plays in serving these travel needs.**

# ACCESS AND MOBILITY

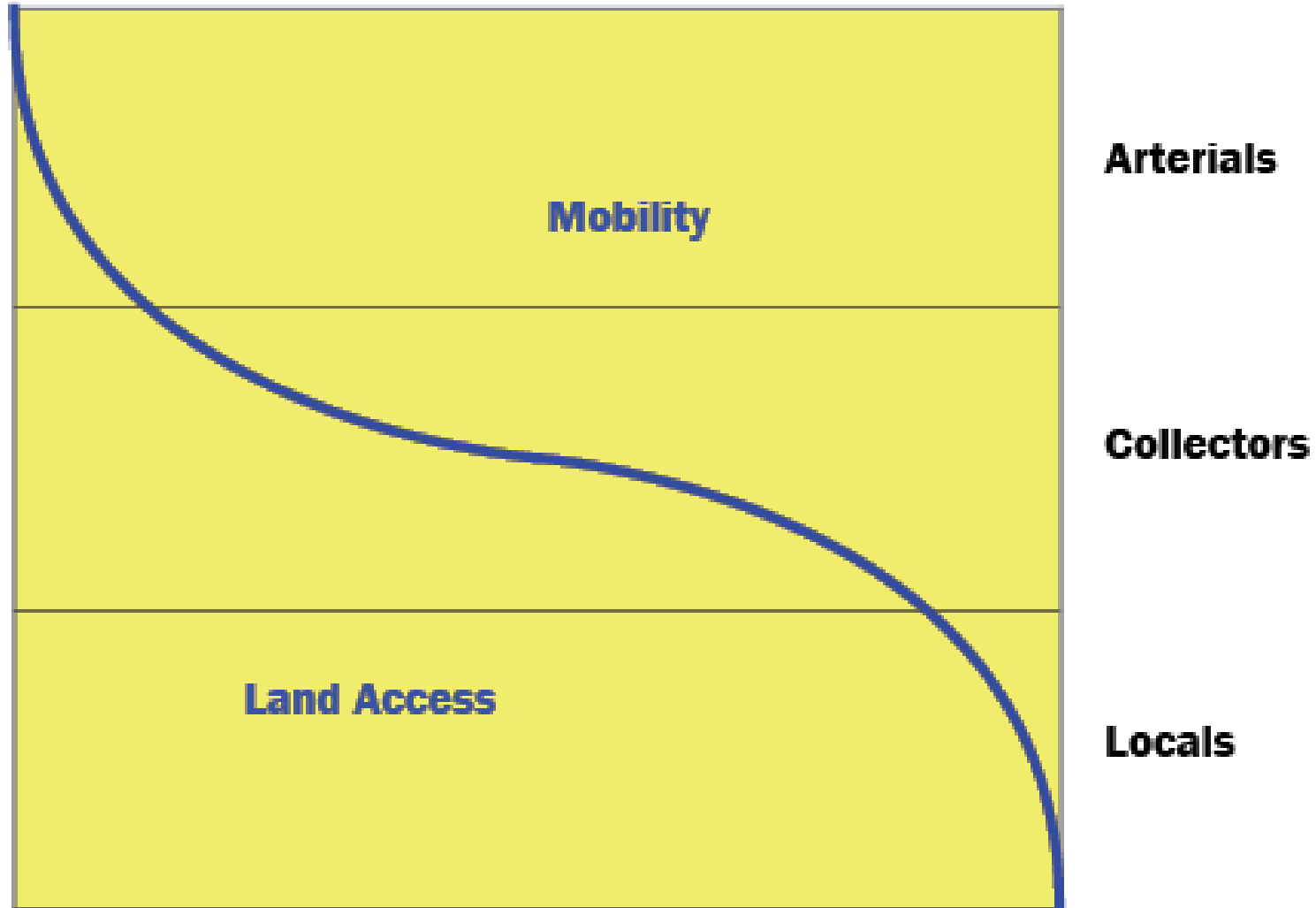


Image: [FHWA](#)

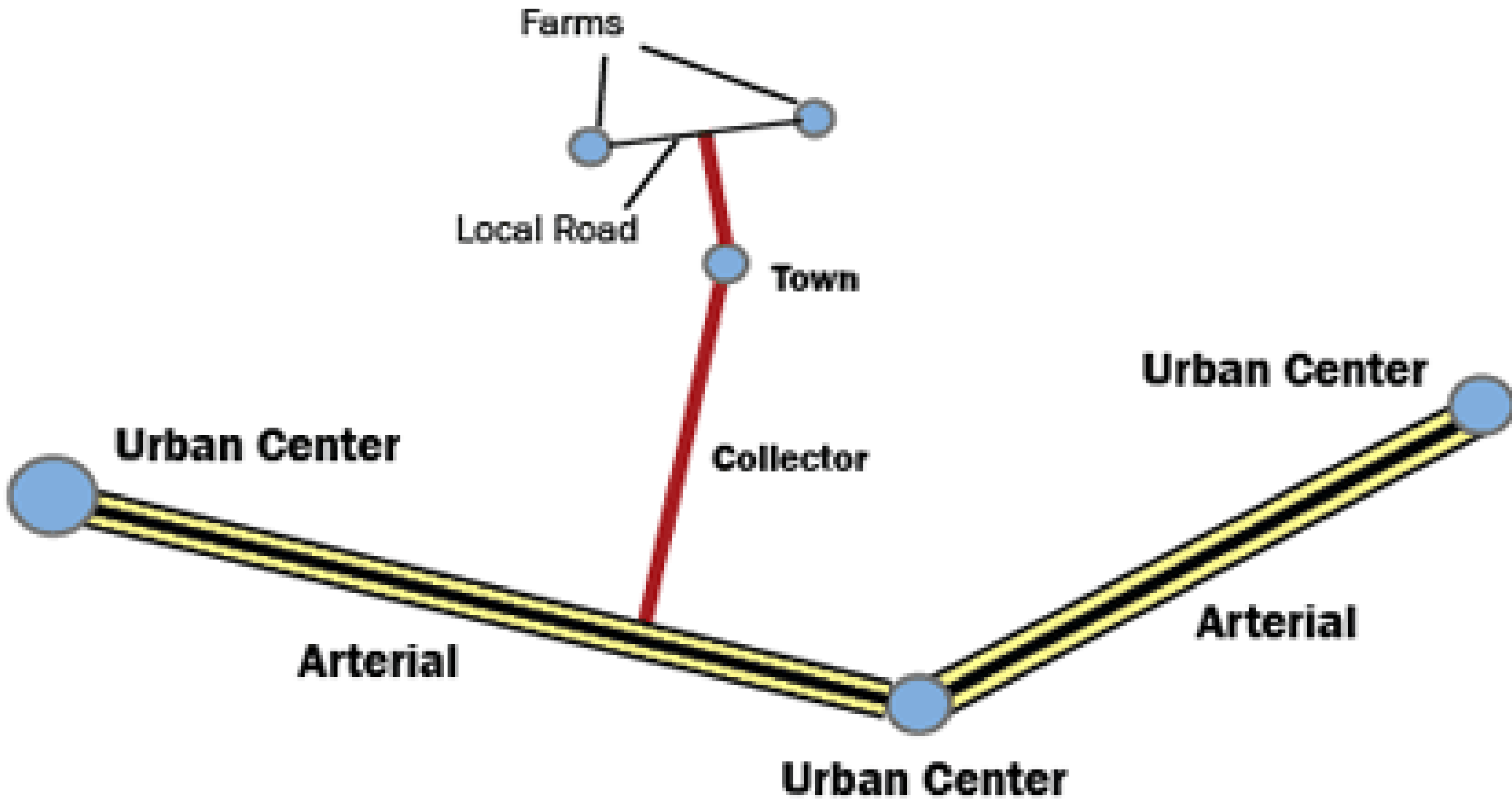
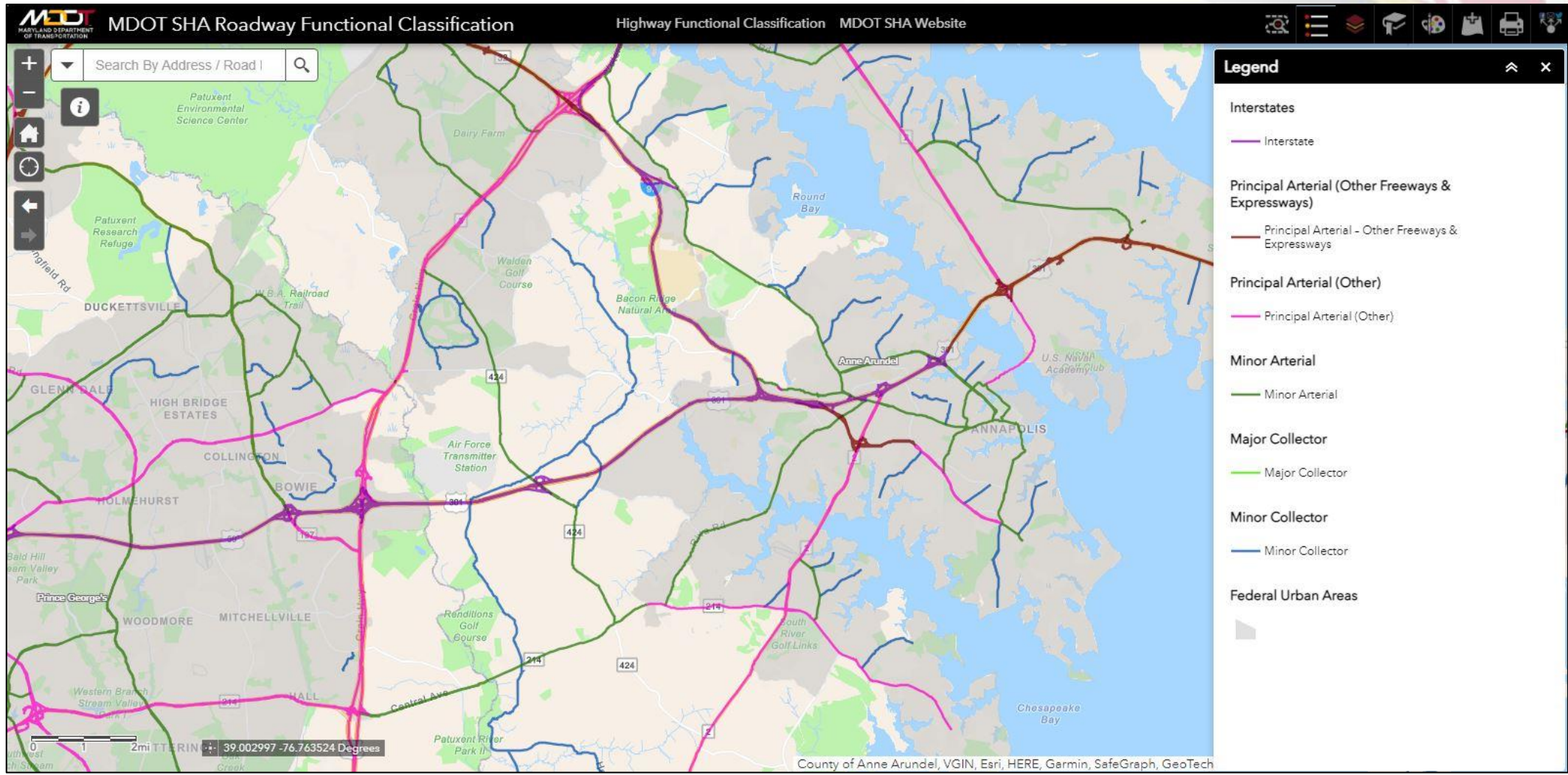


Image: [FHWA](#)

| Rural   | Urban   |
|---|---|
| Principal Arterial - Interstate                   | Principal Arterial - Interstate                   |
| Principal Arterial - Other Freeways & Expressways | Principal Arterial - Other Freeways & Expressways |
| Principal Arterial - Other                        | Principal Arterial - Other                        |
| Minor Arterial                                    | Minor Arterial                                    |
| Major Collector                                   | Major Collector                                   |
| Minor Collector                                   | Minor Collector                                   |
| Local   | Local   |

Federal Aid Eligible



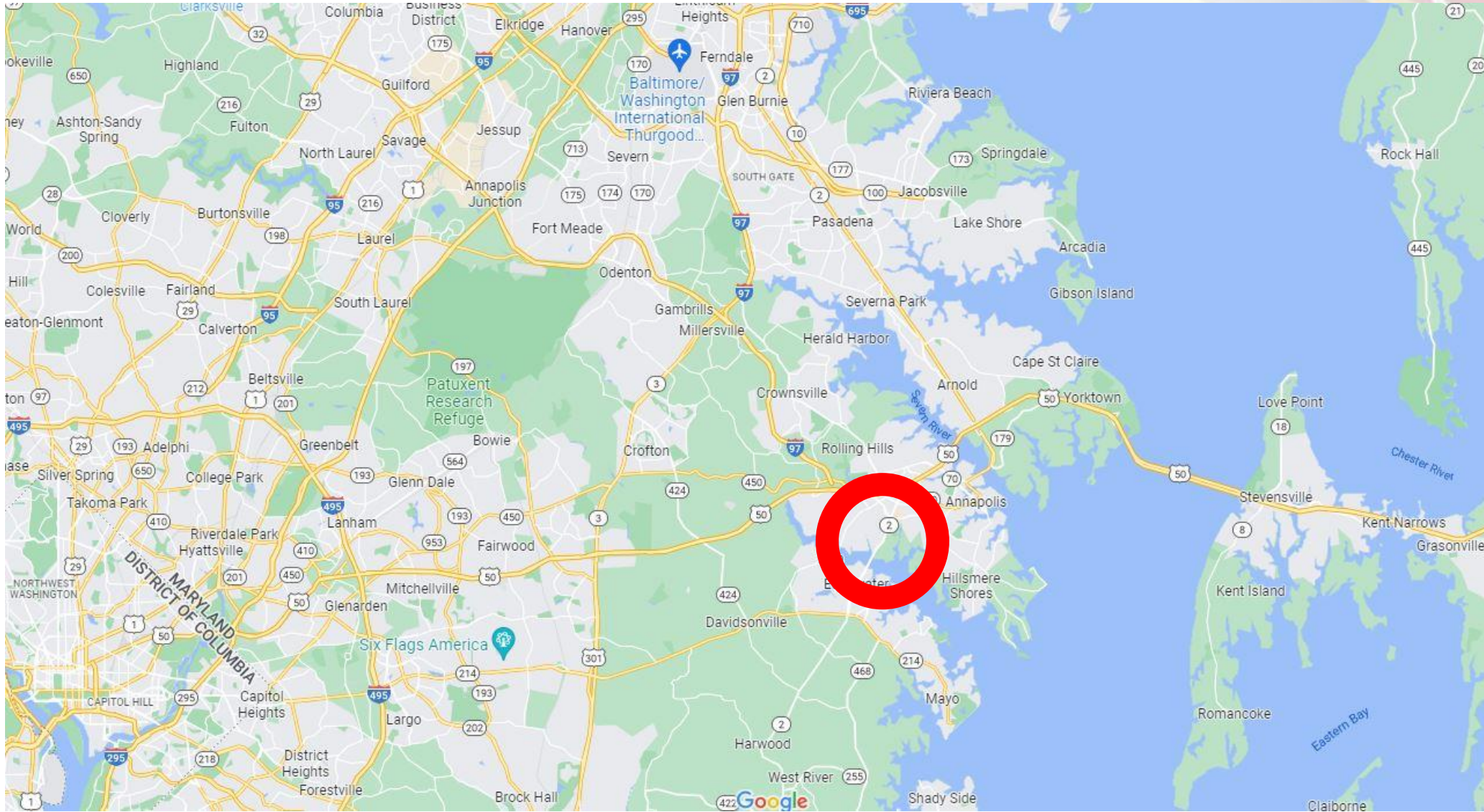


SOURCE: [MDOT SHA](https://www.mdot.gov/sha)



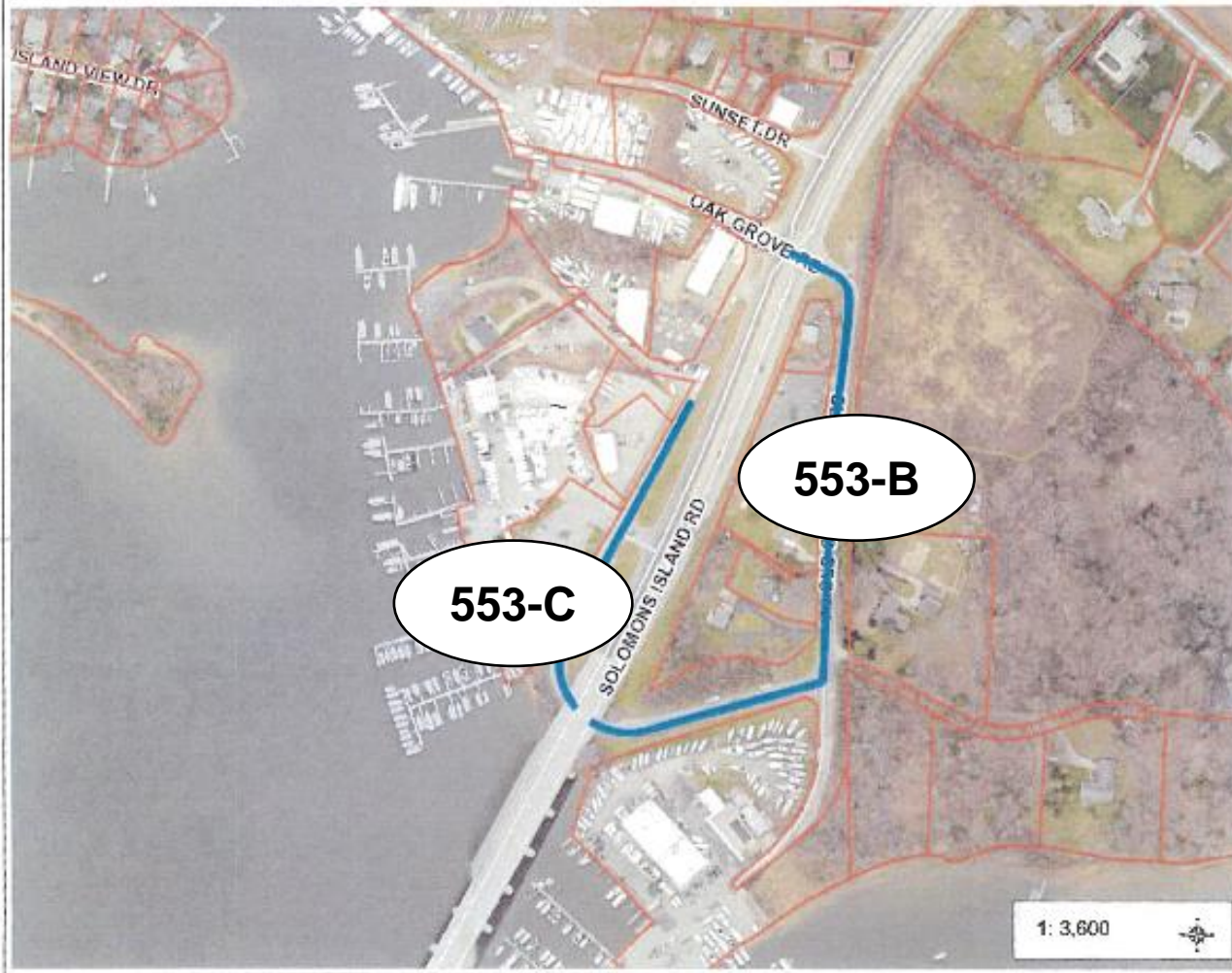


MD 553 (OLD SOUTH RIVER ROAD)  
FUNCTIONAL CLASSIFICATION CHANGE:  
**LOCAL ROAD TO MINOR COLLECTOR**





# Proposed Classification Upgrade for MD 553



**Legend**

- OPZ Parcels
- Annapolis City Parcels
- Street Names
- Street Centerlines

**Notes**

800.0 0 300.00 600.0 Feet

NAD\_1983\_HARN\_StatePlane\_Maryland\_FIPS\_1500\_Feet  
© Leifarde Geographics Group Ltd.

This map is a user generated static output from an Internet mapping site and is for reference only. Data layers first appear on this map may or may not be accurate, current, or otherwise reliable.  
**THIS MAP IS NOT TO BE USED FOR NAVIGATION**

## Anne Arundel County – Urban Highway Mileage by Functional Classification

| Functional Classification | Interstate | Other Freeways & Expressways | Other Principal Arterial | Minor Arterial | Major Collector | Minor Collector | Local    | Total Urban |
|---------------------------|------------|------------------------------|--------------------------|----------------|-----------------|-----------------|----------|-------------|
| Existing Miles            | 30.820     | 58.860                       | 66.215                   | 161.098        | 163.908         | 81.248          | 1483.823 | 2045.972    |
| Existing %                | 1.51%      | 2.88%                        | 3.24%                    | 7.87%          | 8.01%           | 3.97%           | 72.52%   | 100%        |
| <b>Proposed</b>           |            |                              |                          |                |                 |                 |          |             |
| <i>MD 553B</i>            | -          | -                            | -                        | -              | -               | +0.18           | -0.18    | -           |
| <i>MD 553C</i>            | -          | -                            | -                        | -              | -               | +0.25           | -0.25    | -           |
| <i>Proposed Miles</i>     | 30.820     | 58.860                       | 66.215                   | 161.098        | 163.908         | 81.678          | 1483.393 | 2045.972    |
| <i>Proposed %</i>         | 1.51%      | 2.88%                        | 3.24%                    | 7.87%          | 8.01%           | 3.99%           | 72.50%   | 100%        |

## FHWA Guidelines for Urban Systems vs. Anne Arundel County's Urban Highway System (%)

|                              | <b>FHWA<br/>Guidelines*</b> | <b>Anne Arundel<br/>County<br/>Urban System<br/><i>Before</i></b> | <b>Anne Arundel<br/>County<br/>Urban System<br/><i>After</i></b> |
|------------------------------|-----------------------------|---|--|
| Interstate                   | 1-2                         | 1.51  | 1.51   |
| Other Freeways & Expressways | 0-2                         | 2.88  | 2.88   |
| Other Principal Arterials    | 4-5                         | 3.24  | 3.24   |
| Minor Arterials              | 7-12                        | 7.87  | 7.87   |
| Major Collectors             | 7-13                        | 8.01  | 8.01   |
| Minor Collectors             | 7-13                        | 3.97  | 3.99   |
| Local                        | 63-75                       | 72.52   | 72.50  |

\*Source: Highway Functional Classification Concepts, Criteria and Procedures (2013, United States Department of Transportation Federal Highway Administration).

# STEPS FOR INTERIM ADJUSTMENT

- 1. Coordination between AA County and MDOT SHA via request**
- 2. Coordination with BRTB**
- 3. Submission to FHWA for concurrence**
- 4. Updated by MDOT SHA's Data Services Division**





# QUESTIONS?



**PETE REGAN**  
**FUNCTIONAL CLASSIFICATION PROGRAM MANAGER**  
**MDOT SHA**  
**REGIONAL AND INTERMODAL PLANNING DIVISION**  
**410-545-5671**  
***PREGAN@MDOT.MARYLAND.GOV***