



Census 2020 Urban Area Proposed Changes

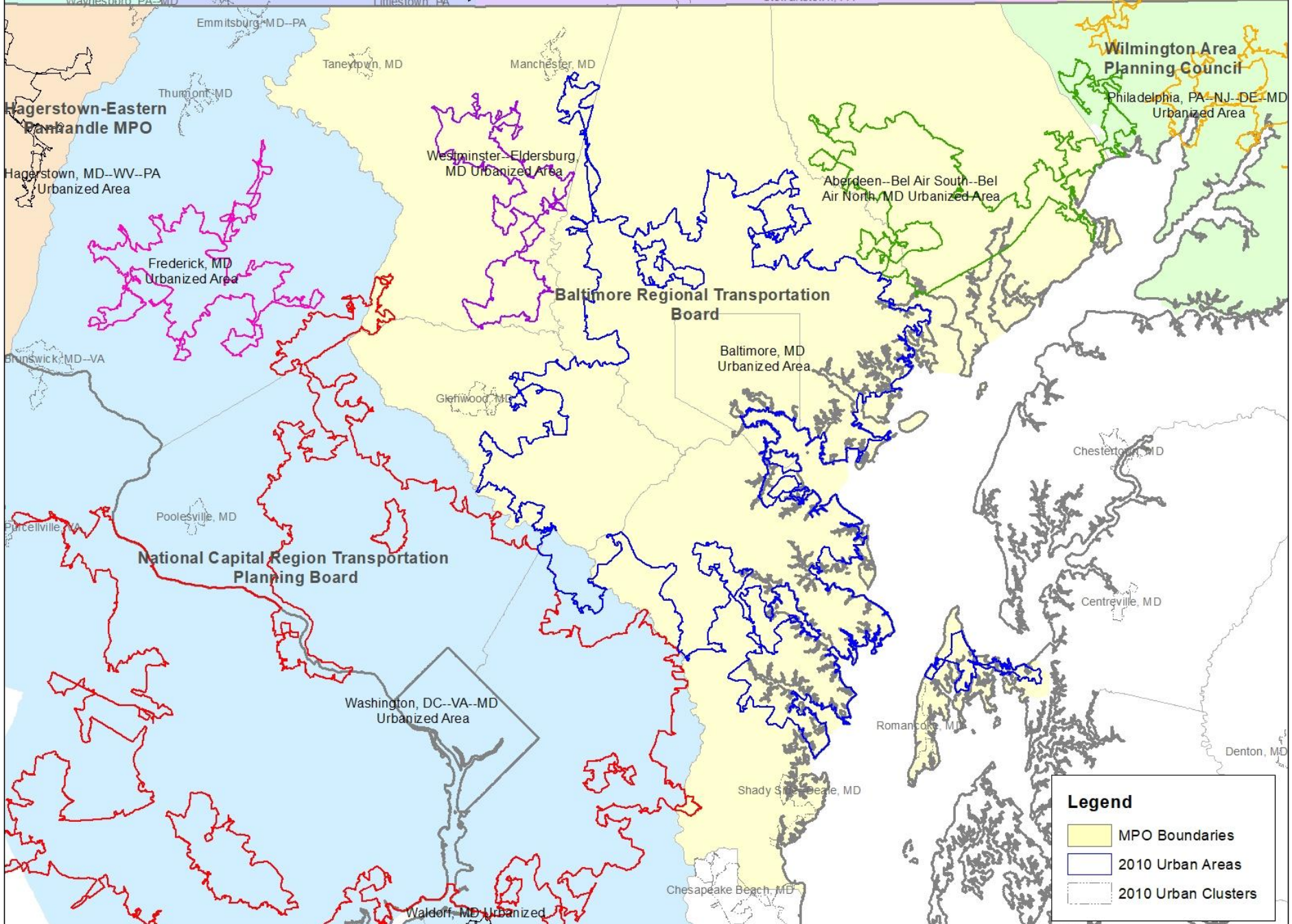
Technical Committee

May 4, 2021



Overview

- February 19, 2021 Federal Register Notice – Revised Criteria for Defining an Urban Areas – Census Bureau
- What is an Urban Area?
- Relationship between Urban Areas and FHWA Urbanized Areas
- Relationship between Urban Areas and MPOs



Legend

- MPO Boundaries
- 2010 Urban Areas
- 2010 Urban Clusters

Definitions*

- **Urban Area** – densely settled area designated by the Census
- **Urbanized Area (UA)** – a large urban area of 50,000 people or more
- **Urban Cluster (UC)** – urban area of 2,500 – 50,000 people
- **Hop** – multiple short-distance connections between qualifying blocks connected by roads
- **Jump** - single long-distance connection between qualifying blocks connected by road
- **Corridor** – land connecting dense residential areas
- **Federal Register** – official publication for rules and regulations

** Official Census definitions, FHWA definition may be different*

Current Urban Area Criteria (2010)

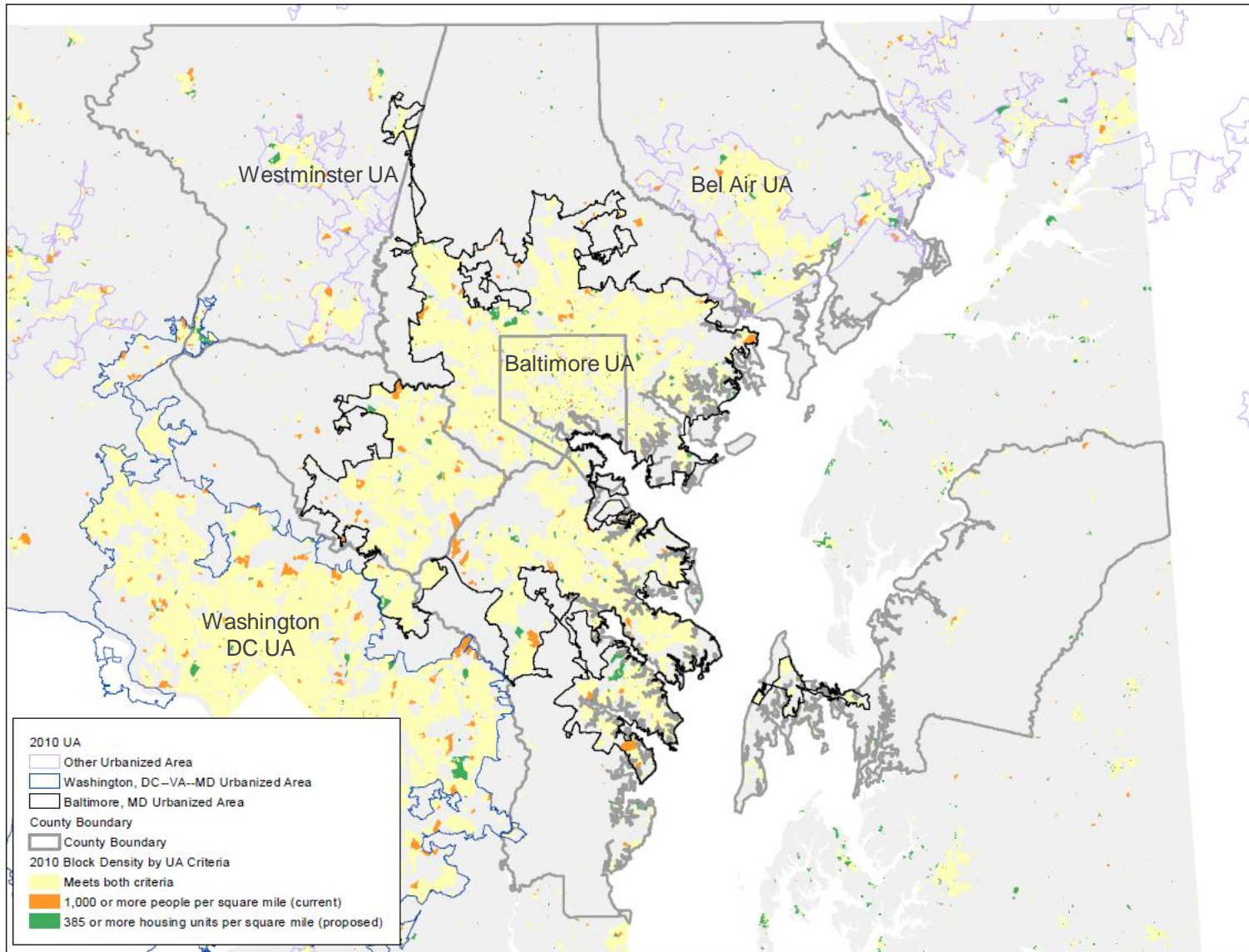
- Urban Areas (50,000 people +) and Urban Clusters (2,500-50,000 people)
- Minimum core population 2,500 people
- Minimum density 1,000 people per square mile (core) and 500 people per square mile (additional territory).
- Hop distance 0.5 mi and Jump distance 2.5 mi
- Contiguous territory
- History of Census Urban Areas:
https://www2.census.gov/geo/pdfs/reference/ua/Century_of_Defining_Urban.pdf

Proposed Changes

- Change in core density threshold to 10,000 people or 4,000 housing units
- Only one type of Urban Area (no Urban Clusters)
- Change from population density to housing units
- Changes to jump size and other rules that reduce how much low density population will be incorporated into a UA
- Using commuter patterns (LEHD) instead of metro centers to determine the boundaries between UAs
- Full proposal at:
<https://www.federalregister.gov/documents/2021/02/19/2021-03412/urban-areas-for-the-2020-census-proposed-criteria>

Population Density vs. Housing Unit Density

Qualifying density changes from 1,000 people per square mile to 385 housing units per square mile.



Measuring Growth



2010 Housing
Unit Count

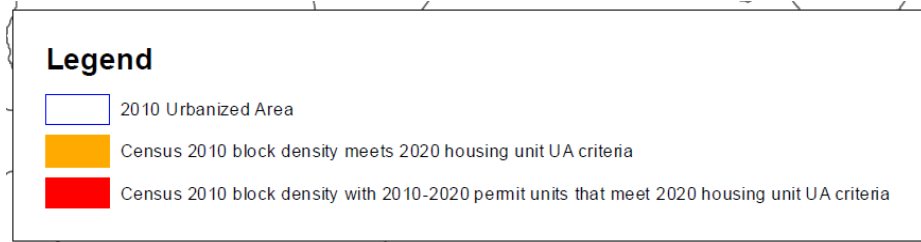
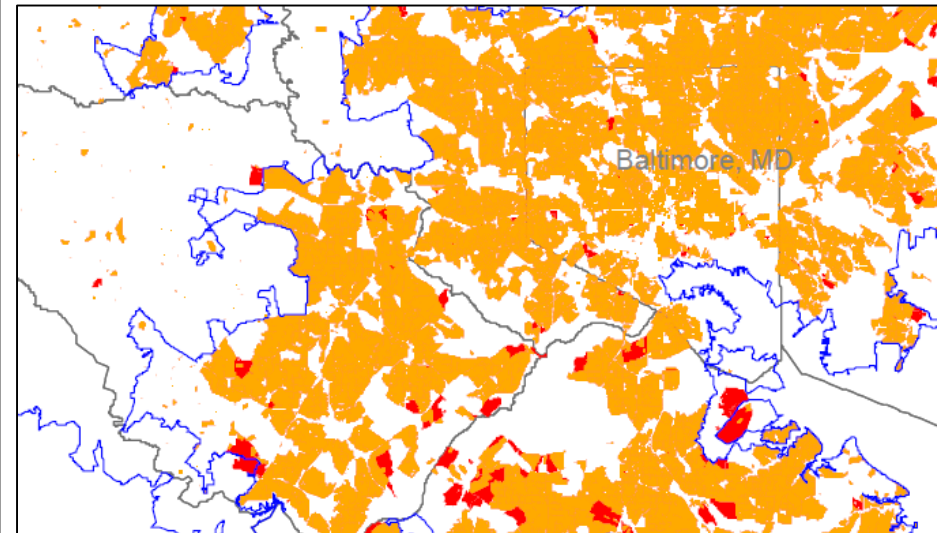
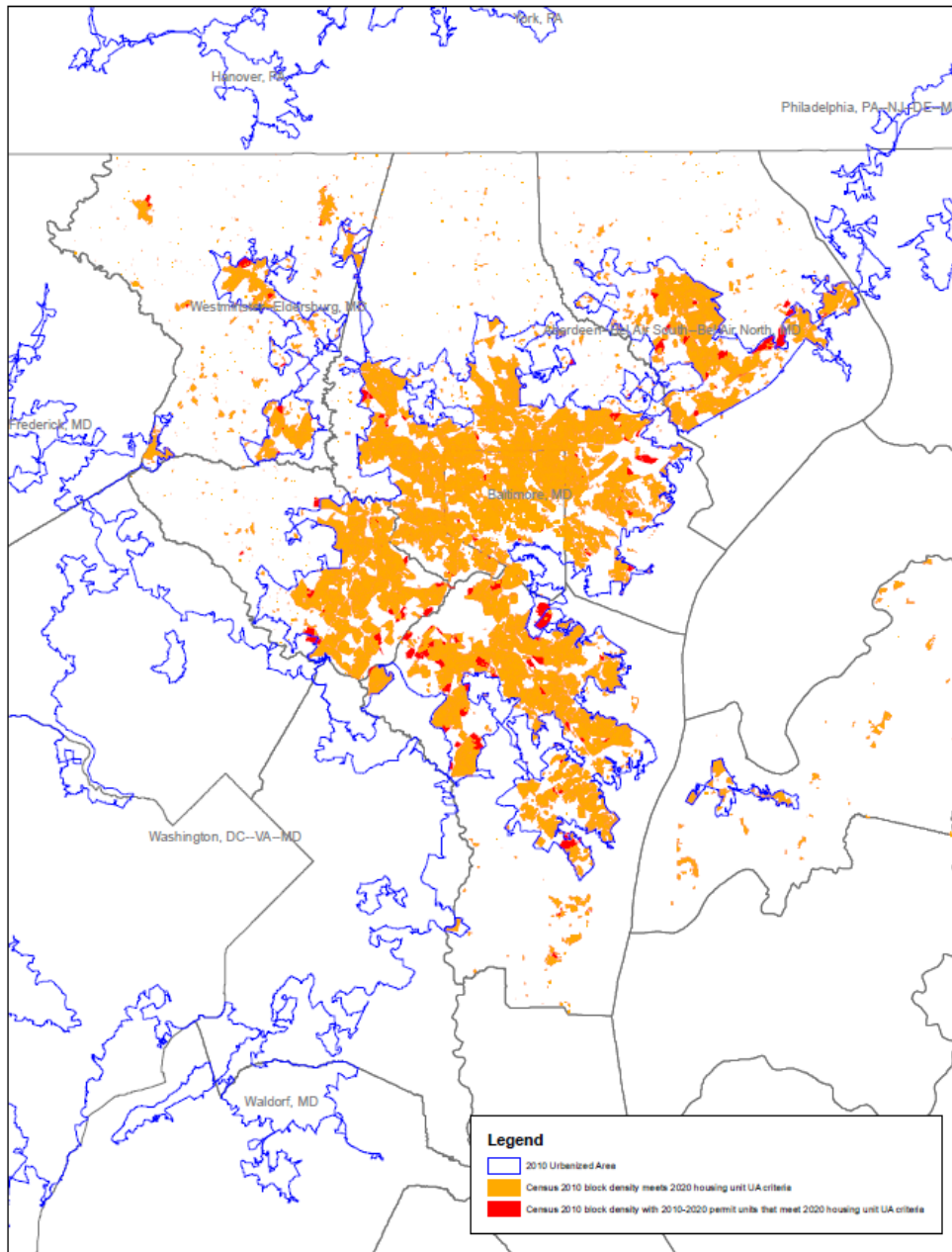


2010-2020
Permitted
Residential Units



Maximum
Possible 2020
Unit Count

Measuring Growth



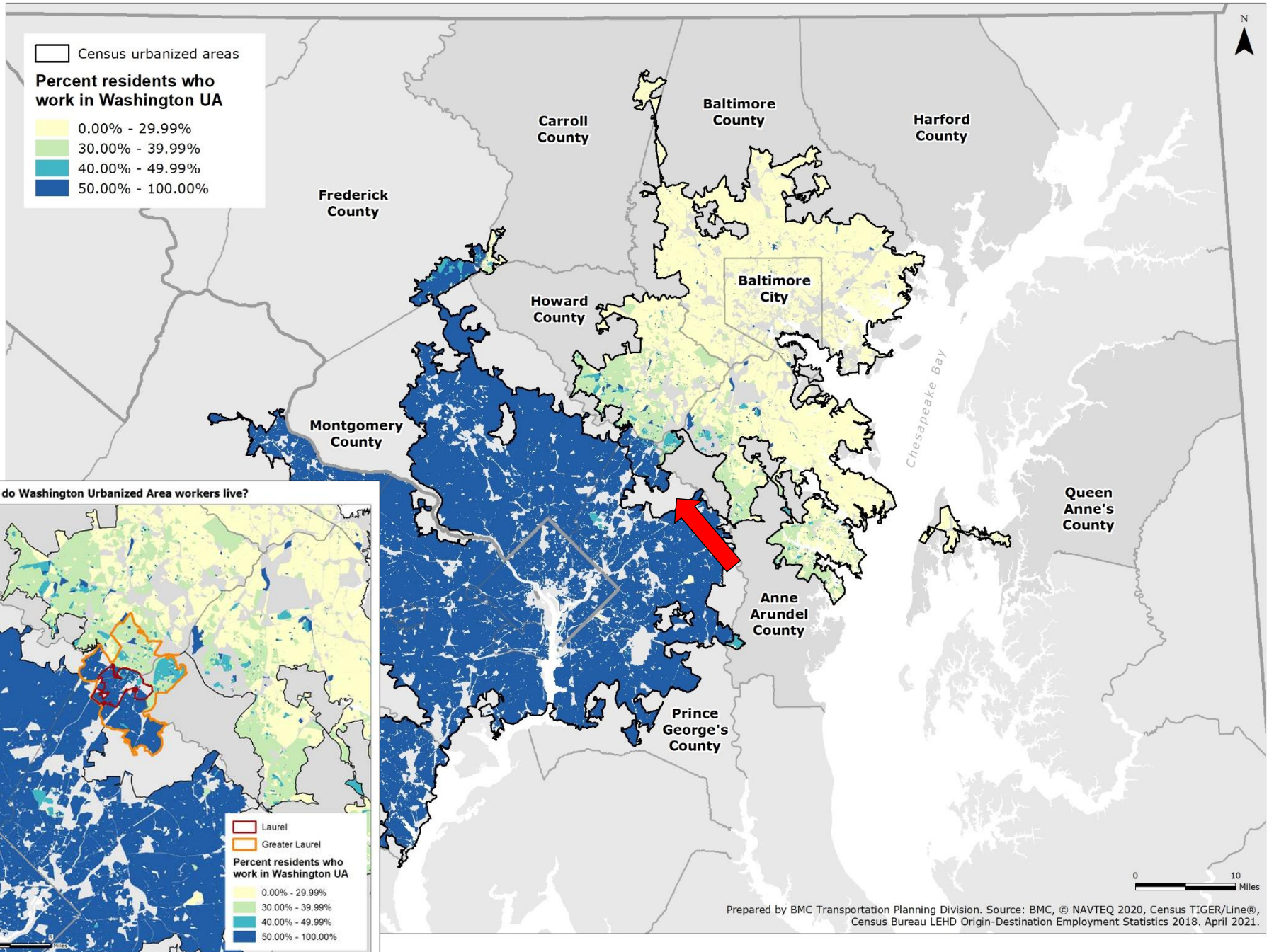
Contraction of Urban Areas

- Reduce jumps from 2.5 miles to 1.5 miles
- No low density corridors between hops and jumps
- Exclude low density land within indentations
- Likely affected areas:
 - Hampstead (Baltimore UA)
 - Sykesville (Westminster UA)
 - Taneytown UC
 - Manchester UC
 - Glenwood UC
 - Additional areas in western Howard County, north central Baltimore County, and western Harford County

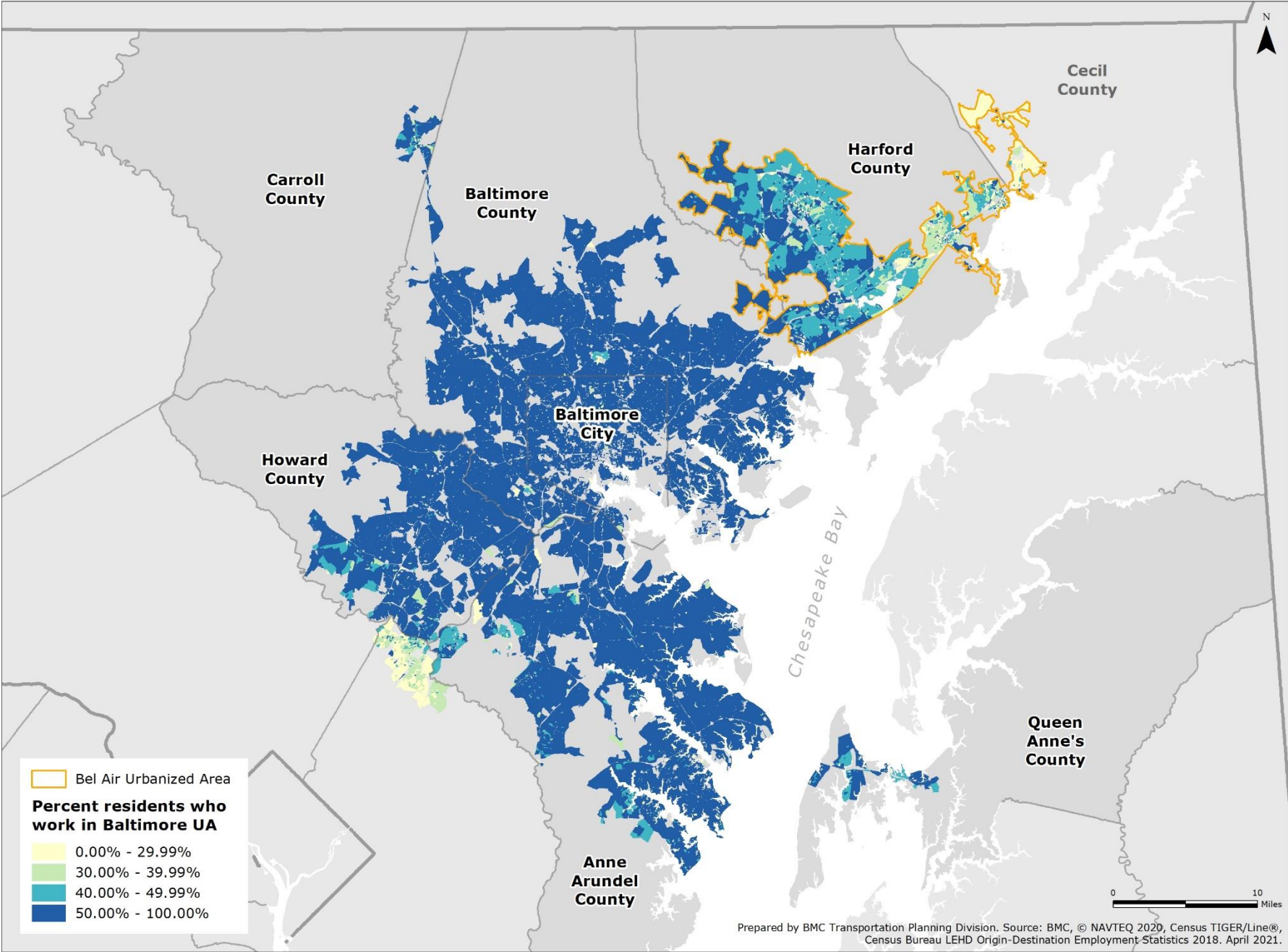
Using Commuter Flow to Delineate Boundaries

- Using commuter flow instead of metropolitan core to determine UA boundaries
- Longitudinal Employer-Household Dynamics (LEHD)
- Split large UAs
- Merge smaller UAs
- Make boundary adjustments
- 50% or more of residents should work in their own urban area

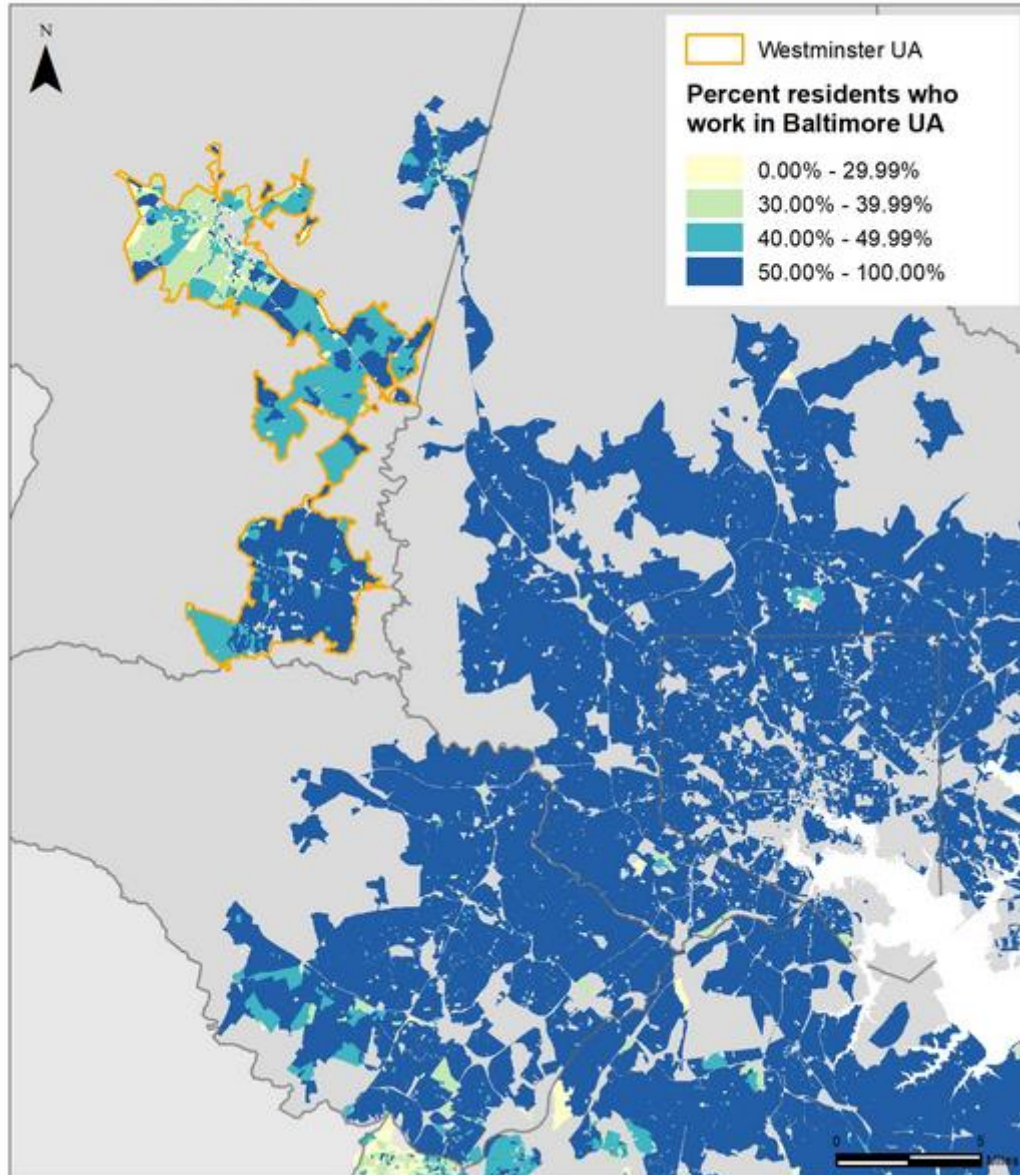
Commuter Patterns in the Baltimore, MD and Washington, DC-VA-MD Urbanized Areas



Commuter Patterns in the Baltimore, MD and Bel Air, MD Urbanized Areas

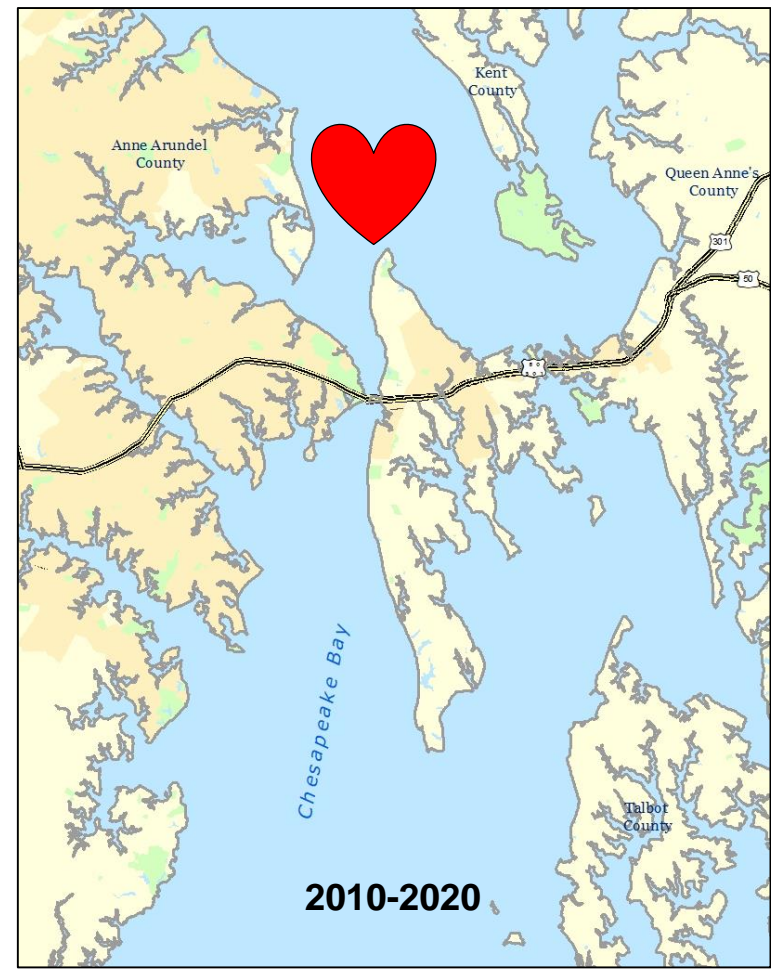
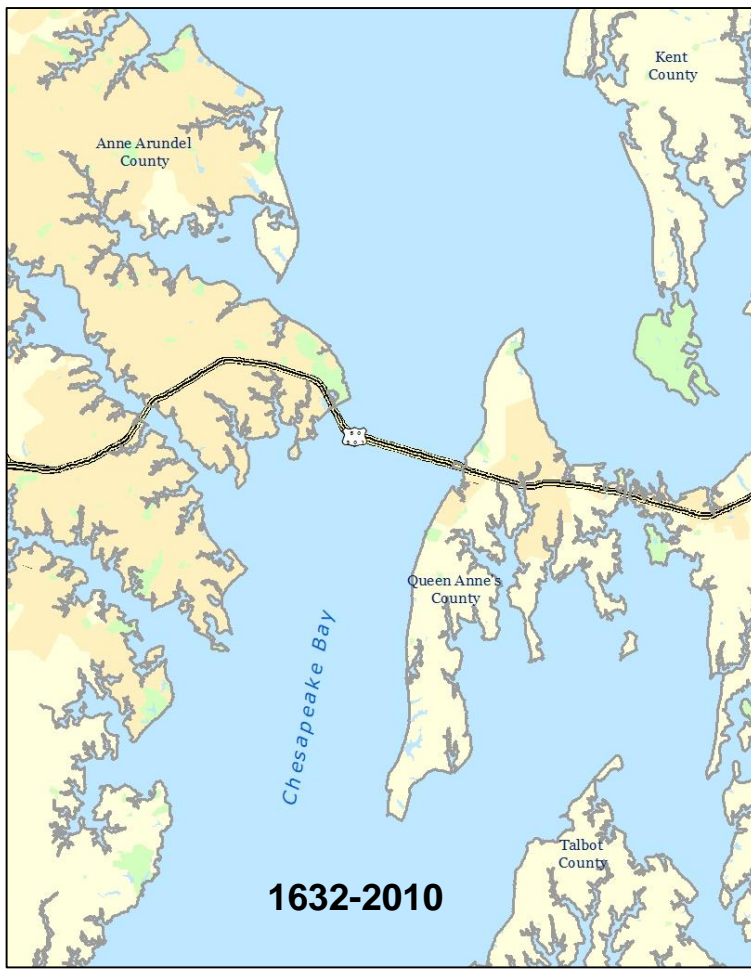


Where do Baltimore Urbanized Area workers live?



Queen Anne's County

- No change to rule about water and bridges
- Jump reduction could still impact Kent Island



Additional Information

- At this point only able to estimate impacts
- FHWA yet to formally weigh in on changes
- Census sample model runs:
<https://mtgis-portal.geo.census.gov/arcgis/apps/webappviewer/index.html?id=94c61c34e2674a229fda427342e0367a>
- AMPO workgroup – developing comments
- Other MPOs doing their own analysis
- Comment period ends May 20.

For More Information

Mara Kaminowitz | GIS Coordinator

410-732-0500 x1030 | mkaminowitz@baltometro.org | www.baltometro.org



@BALTOMETROCOUNCIL



@BALTIMORE METROPOLITAN COUNCIL



@BALTIMORE METROPOLITAN COUNCIL

