



Baltimore Regional Transportation Board

Update on Regional Evacuation Planning Activities

February 4, 2020



Overview

- **Summary of past regional evacuation planning activities**
- **Current regional evacuation planning activities**

Summary of Past Evacuation Planning Activities

- **Documents**

- Regional Protective Action Coordination Guidelines – 2007
- Contraflow Decision Support Tool – 2008
- Evacuation Traffic Management Support Document – 2014

- **Exercises**

- Tabletop Exercise Focused on Transportation Aspects of Evacuation – 2010
- Facilitated Evacuation Discussion – 2014

- **FEMA Evacuation Technical Assistance Project 2016/2017**

- Evacuation Plan Template for Local Jurisdictions
- Evacuation Workshop
- Regional Evacuation Supplement

Regional Strengths Identified

- Strong regional cooperation and interaction across agencies and jurisdictions
- Jurisdictions understand how to handle evacuation and sheltering of their own residents and how to manage incidents
- Resource sharing agreements in place

Regional Areas for Improvement

- Need to develop process to coordinate multi-jurisdictional evacuation
 - Identify communication protocol
 - Determine who oversees multi-jurisdictional traffic management
 - Prioritization of resource allocation

Current Regional Evacuation Planning Activities

- **Transportation & Public Works Committee sponsored two evacuation workshops in Fall 2019**
 - Audience: staff involved in planning and executing evacuations
 - Purpose: address evacuation areas needing improvement:
 - make sure all stakeholders know what evacuation plans and resources are available
 - discuss developing procedures and protocols for regional evacuations
 - define how multi-jurisdictional evacuations are coordinated

Workshop Agenda

Workshop 1: Where Are We Now?

1. Attendees present evacuation plans/resources
2. Discuss agreements in place to support evacuations
3. Discuss what issues are of most concern to attendees

Workshop 2: How Are Multi-Jurisdictional Evacuations Coordinated?

4. Highlights from Workshop 1
5. Overview of Regional Evacuation Coordination Supplement
6. Scenario discussion
 - Notice Event
 - No-notice Event
7. Identify next steps
 - revisions needed to existing documents/agreements
 - What new documents/agreements are needed

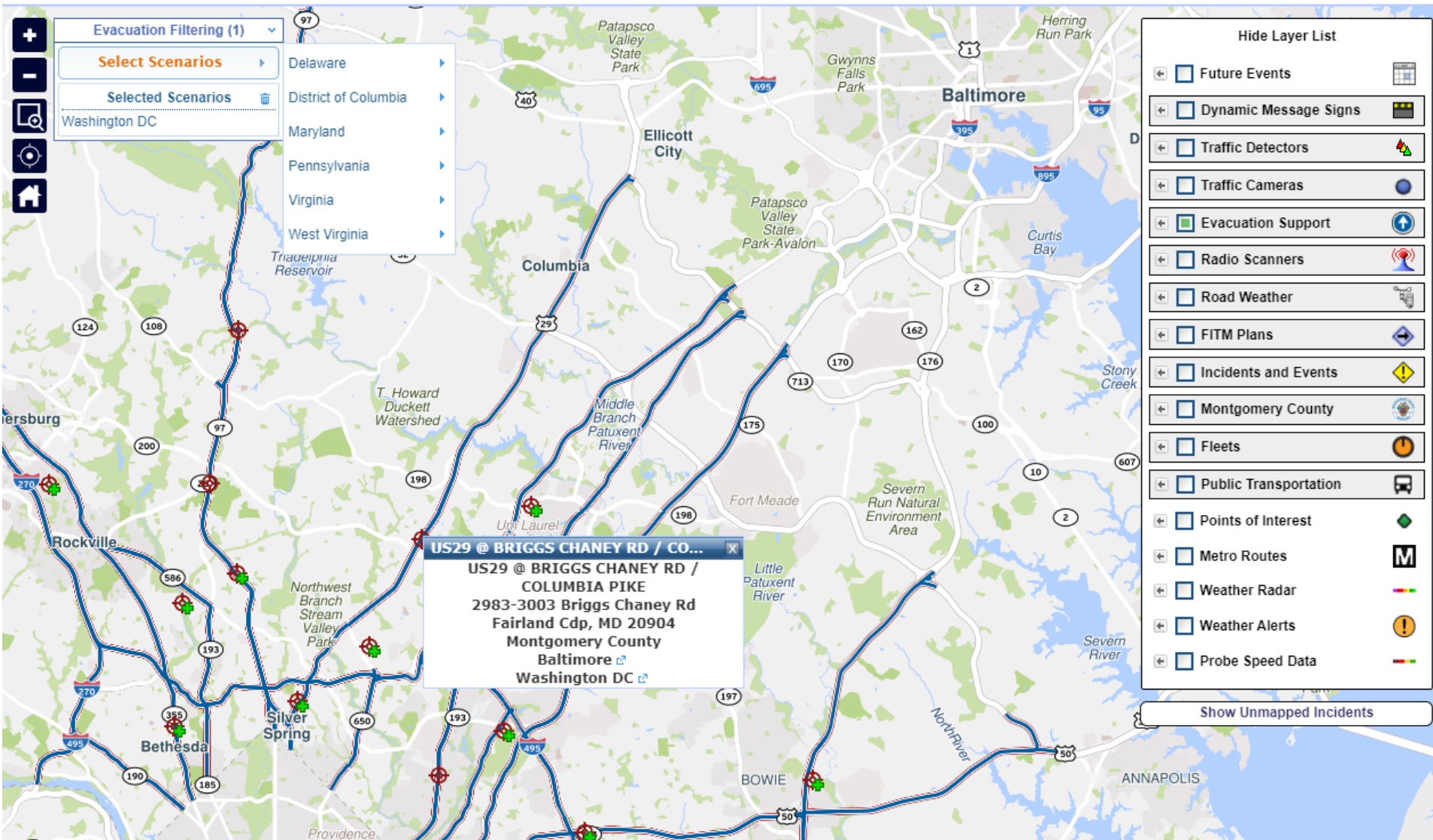
Next Steps from Evacuation Workshops

- Various action items were identified to be addressed at the local, regional, and state levels
- Currently developing approach to address action items
 - T&PW Committee will work closely with UAWG Emergency Management Committee and MEMA on regional and state action items.

Adding Baltimore Region Evacuation Routes to RITIS – By Scenario

- **BMC contract with UMD CATT Lab**
- **Scenarios as listed in Evacuation Traffic Management Support Document**
 - Baltimore CBD
 - Hurricane
 - National Capital Region
 - Philadelphia/Delaware
 - Peach Bottom
 - Aberdeen
 - Annapolis/State Capitol
 - BWI
 - Fort Meade
 - Prettyboy Dam

Adding Baltimore Region Evacuation Routes to RITIS – Similar to NCR

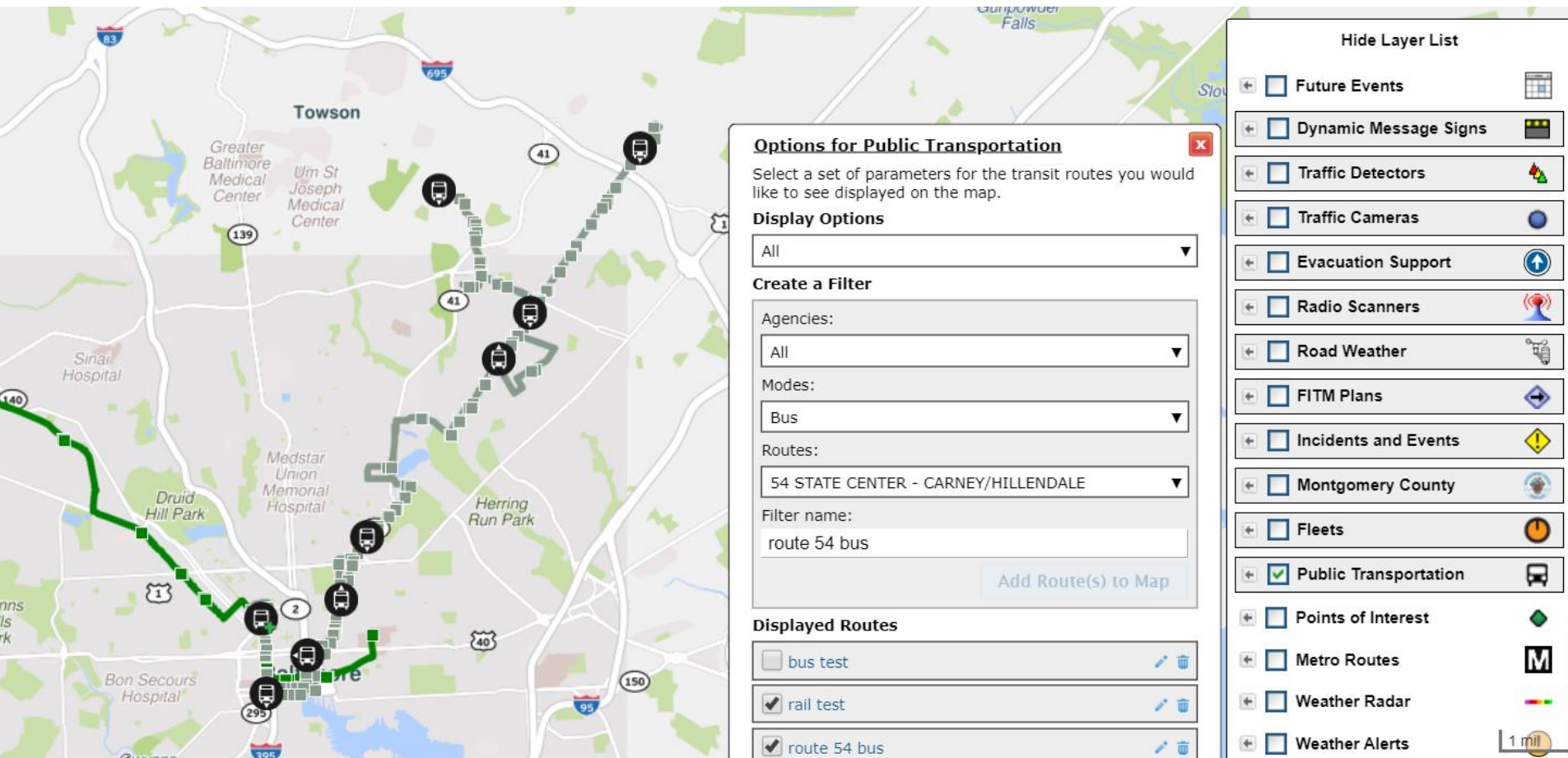


Adding Baltimore Region Evacuation Routes to RITIS – Includes Traffic Control Point Diagrams



Bonus: FYI

- Real-time MTA data is now available on RITIS



Questions

Eileen Singleton, P.E.

Principal Transportation Engineer

esingleton@baltometro.org

410-732-0500 x 1033