

Resolution #18-4

Transportation

Alternatives Applications



Baltimore Metropolitan Council



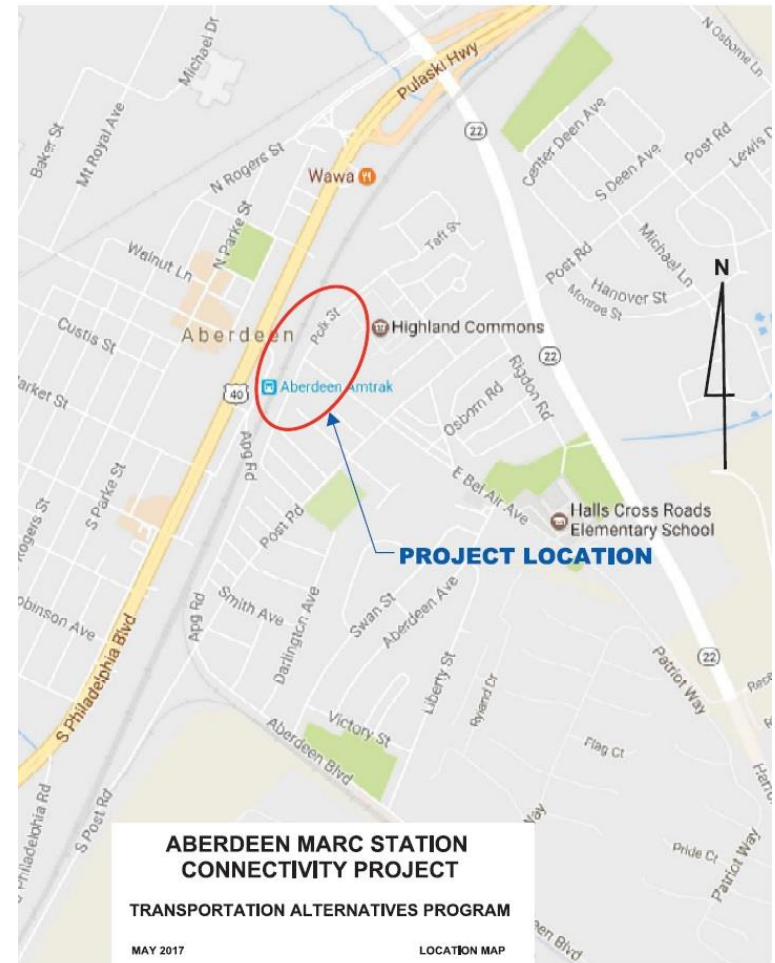
TA Program Applications

- SHA & BRTB Call for Projects – Due May 15
- SHA and BMC Review Applications
- Funds available:
 - Baltimore region:
 - \$2.14 million available in FY 2018
 - 8 applications received totaling \$15.54 million in requests
 - Aberdeen/Bel Air South/Bel Air North:
 - Receives it's own suballocation as an urbanized area >200,000 in population
 - \$1.02 million available (\$207k in FY 2018 + previously unawarded funds)
 - 2 applications received totaling \$3.45 million in requests



Aberdeen MARC Station Connectivity Enhancement (City of Aberdeen)

- Improved connectivity to the Aberdeen Train Station and transit waiting area
- Request: \$796,342 for design and construction



Willow Pond Stormwater Management Facility (Carroll County)

- Retrofit the existing facility to improve water quality and channel protection
- Request: \$2.64 million for construction



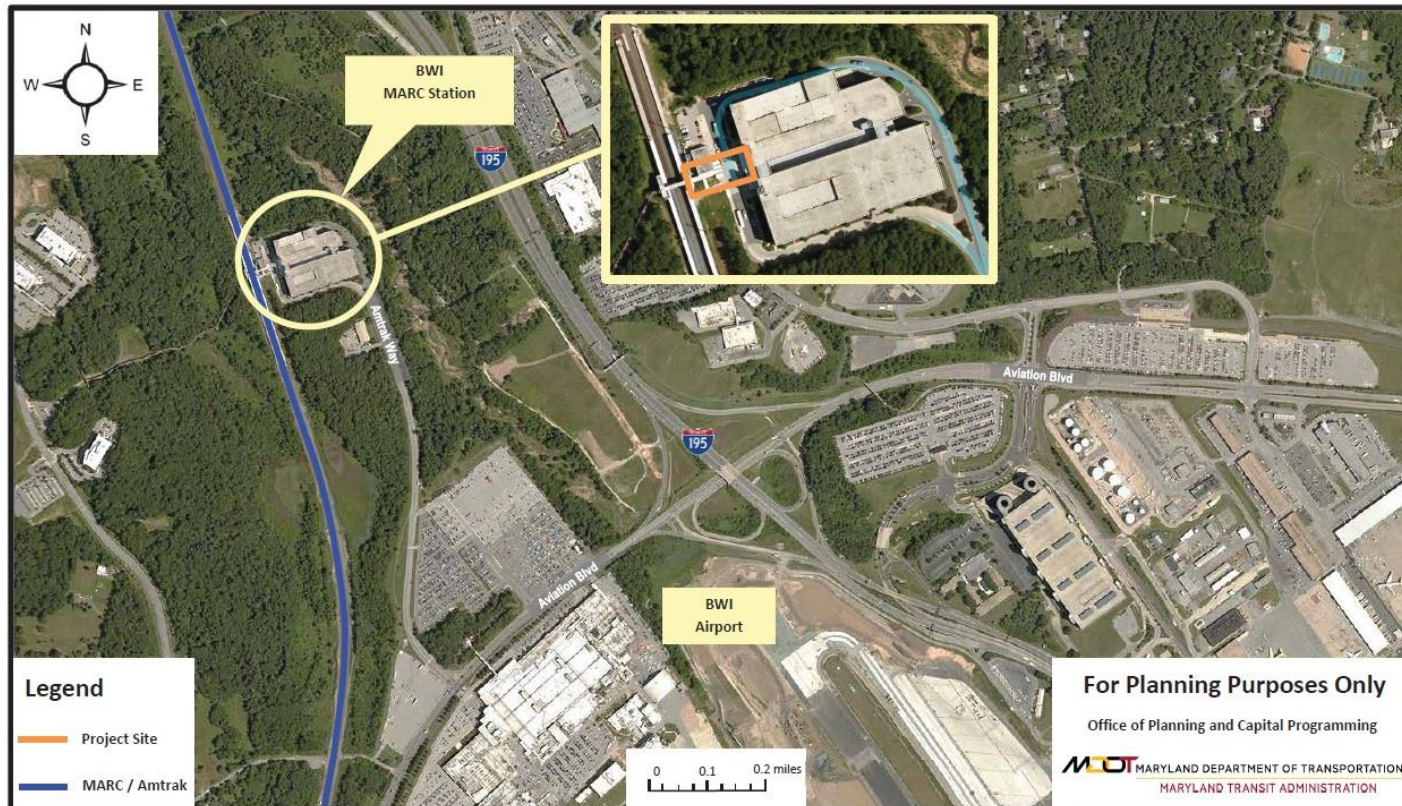
Pedestrian Access Improvements at Hamburg LR Station (MTA)

- Pedestrian access improvements to the connection between Sharp-Leadenhall and the Hamburg Street Light Rail Station
- Request: \$240,000 for design and construction



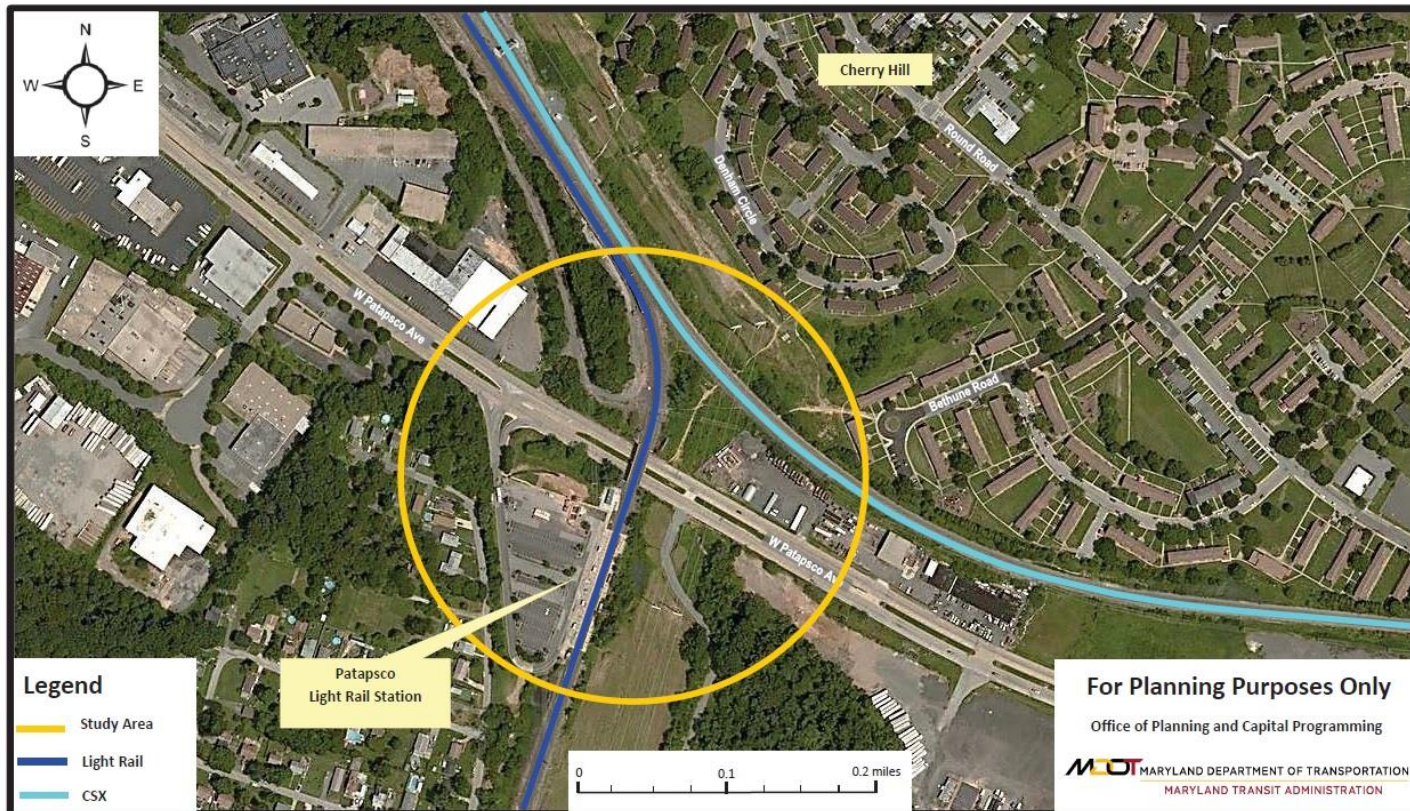
Pedestrian Bridge at BWI MARC Station (MTA)

- New pedestrian bridge connecting the North garage at BWI MARC Station and the existing pedestrian bridge
- Request: \$3.13 million for design and construction



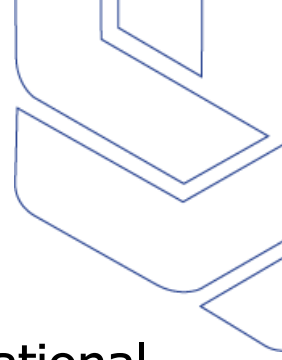
Patapsco LR – Cherry Hill Pedestrian Bridge Feasibility Study (MTA)

- Feasibility study to provide a safe and ADA-compliant pedestrian crossing from Cherry Hill to the Patapsco Light Rail Station
- Request: \$120,000 for feasibility study



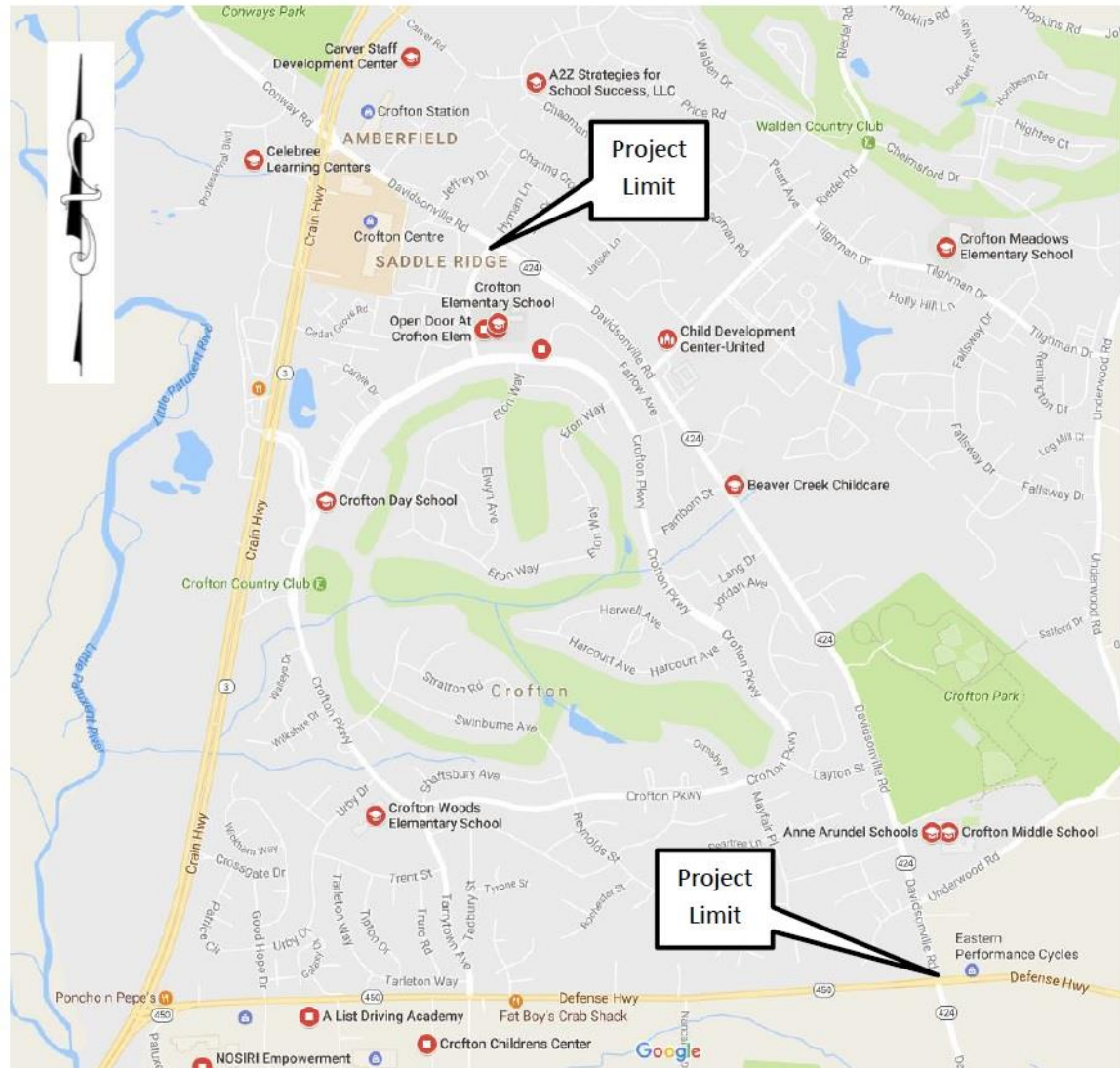
Pimlico Elementary SRTS (Baltimore City)

- Sidewalk, ADA, and intersection improvements near Pimlico Elementary & Middle School as well as non-infrastructure educational events and materials
- Request: \$257,577 for infrastructure and non-infrastructure



MD 424 SRTS (Anne Arundel County)

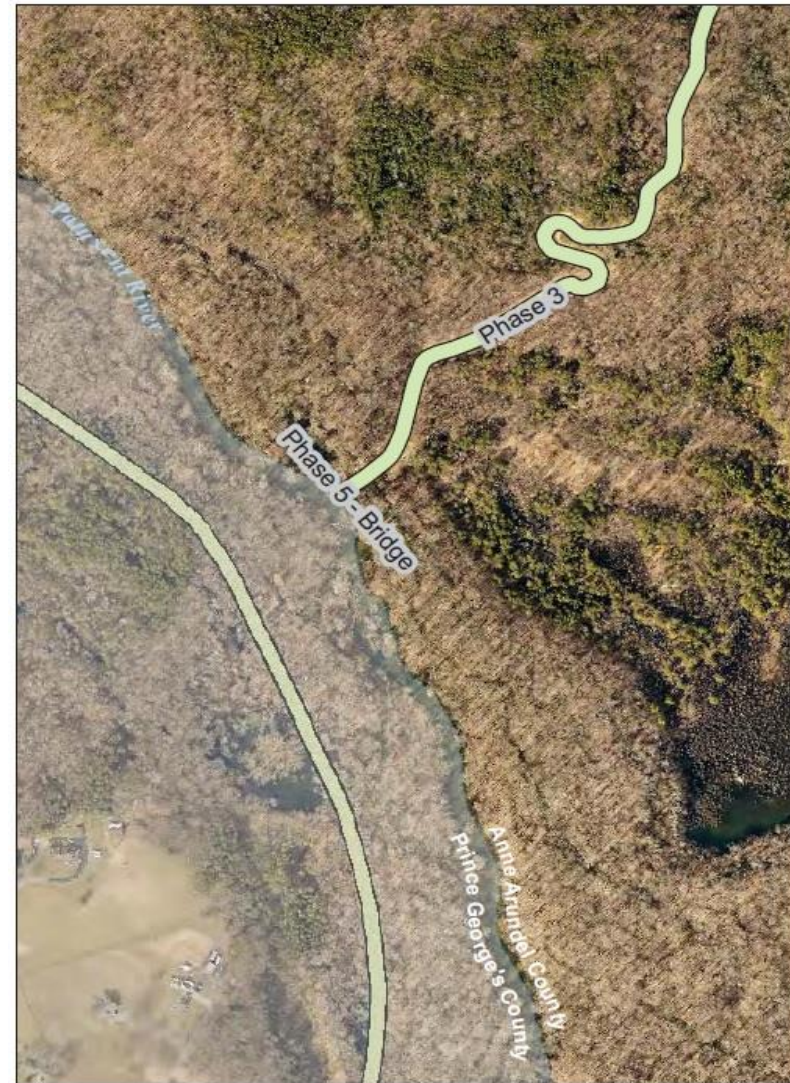
- Construction of sidewalks and ramps along MD 424
- Request: \$551,200 for ROW



Baltimore Metropolitan Council

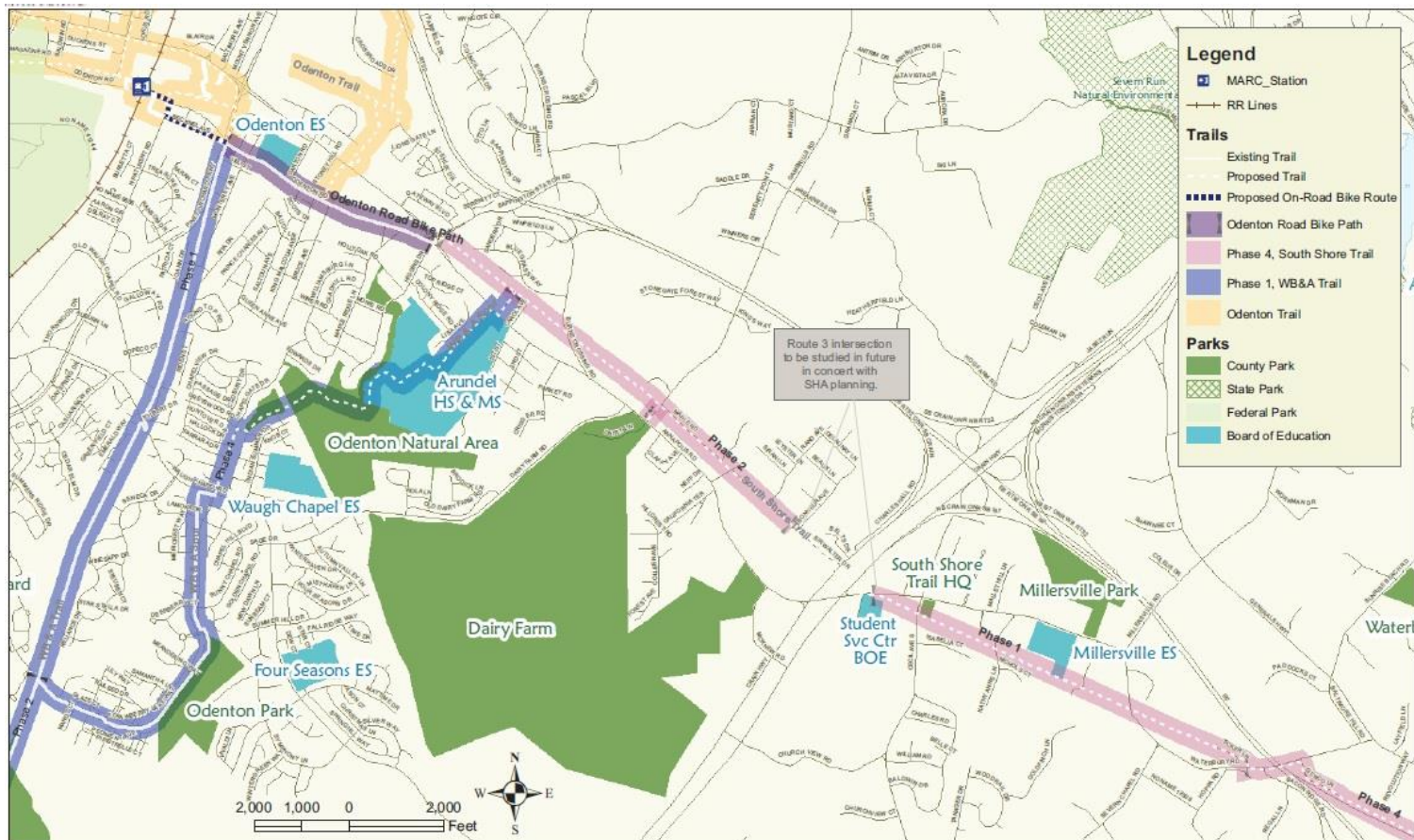
WB&A Trail Bridge over the Patuxent River (Anne Arundel County)

- Construction of a bicycle and pedestrian bridge spanning the Patuxent River between Anne Arundel and Prince George's Counties
- Request: \$4.7 million for construction



South Shore Trail Phase II (Anne Arundel County)

- Construction of a 10' wide shared use path extending from Sappington Station Road to Bonheur Drive
- Request: \$3.9 million for construction



TA Program Applications

- Next steps
 - Meeting with SHA team this week
 - Finalized recommendation soon after
 - Applications not recommended for funding eligible in statewide competition: \$7 million available in FY 2018

