

Howard County

Changing Demographics & New Development

Baltimore Metropolitan Council

Jeff Bronow, Chief

Division of Research

Department of Planning and Zoning

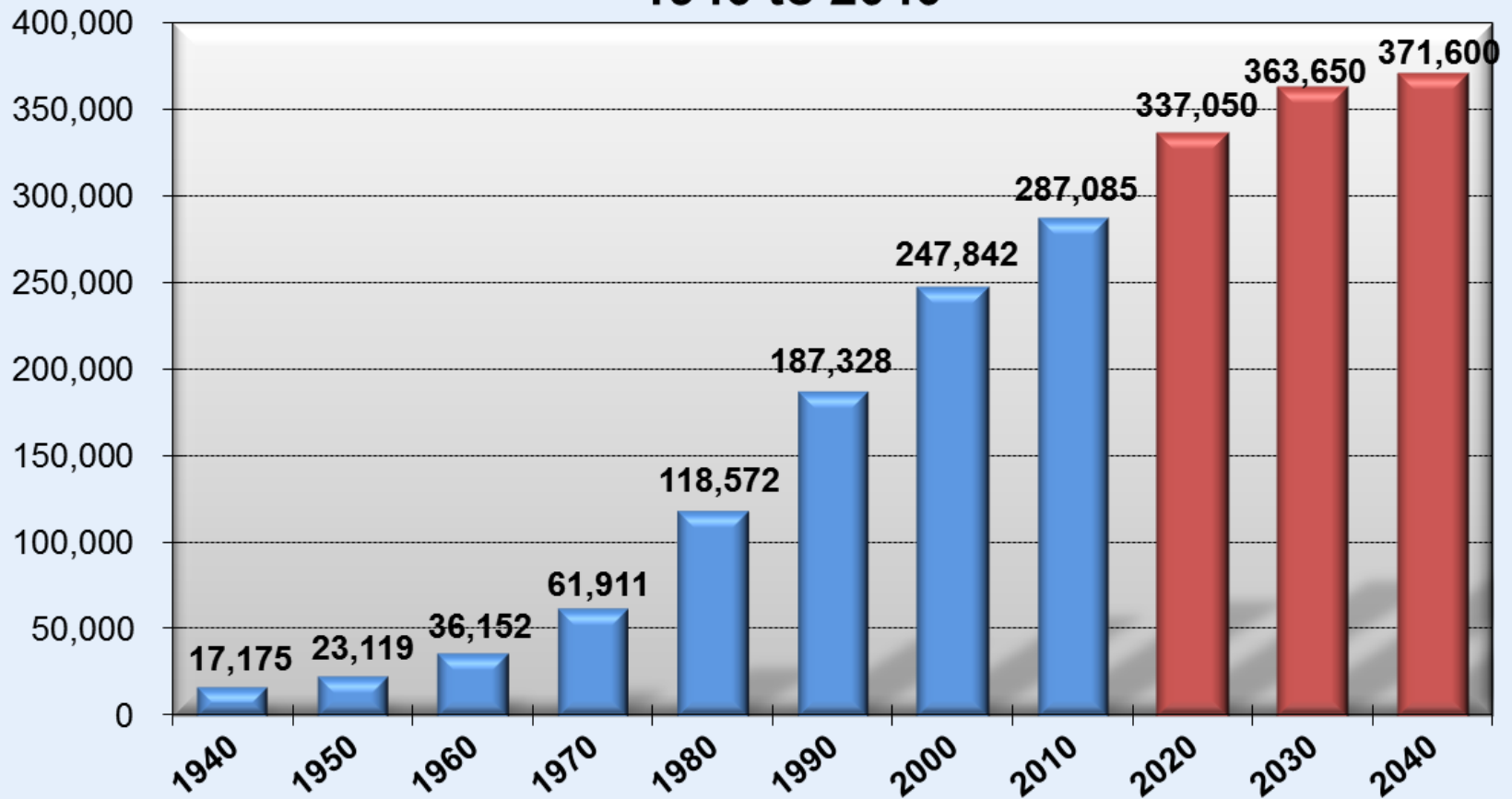
Learning About the County – Changing Demographics and New Development

- Population growth
- Housing & land use
- Racial diversity & foreign born population
- Aging of the population
- Current development patterns

Population Growth

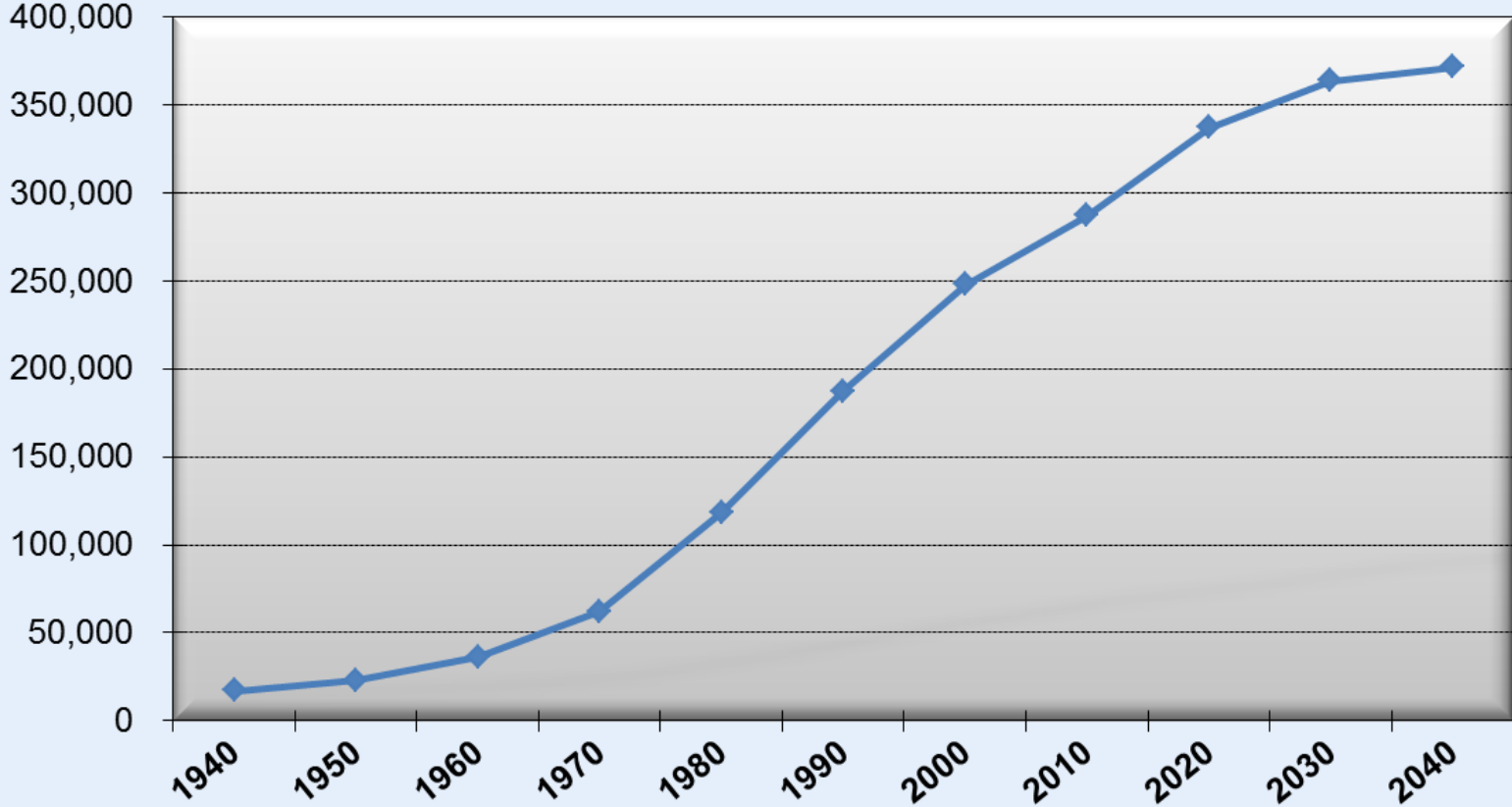


Howard County Population Growth 1940 to 2040



Source: US Census Bureau, DPZ (Round 8C)

Howard County Population Growth 1940 to 2040

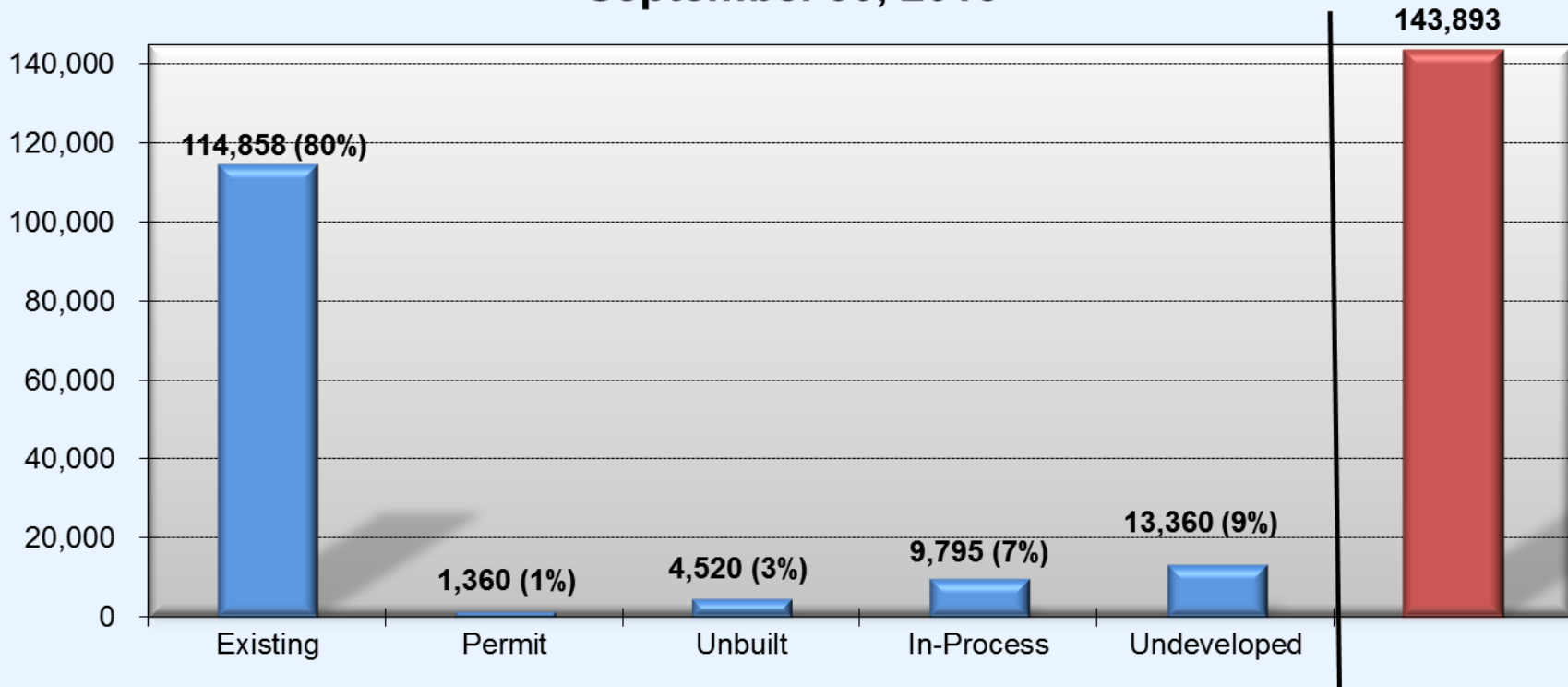


Source: US Census Bureau, DPZ (Round 8C)

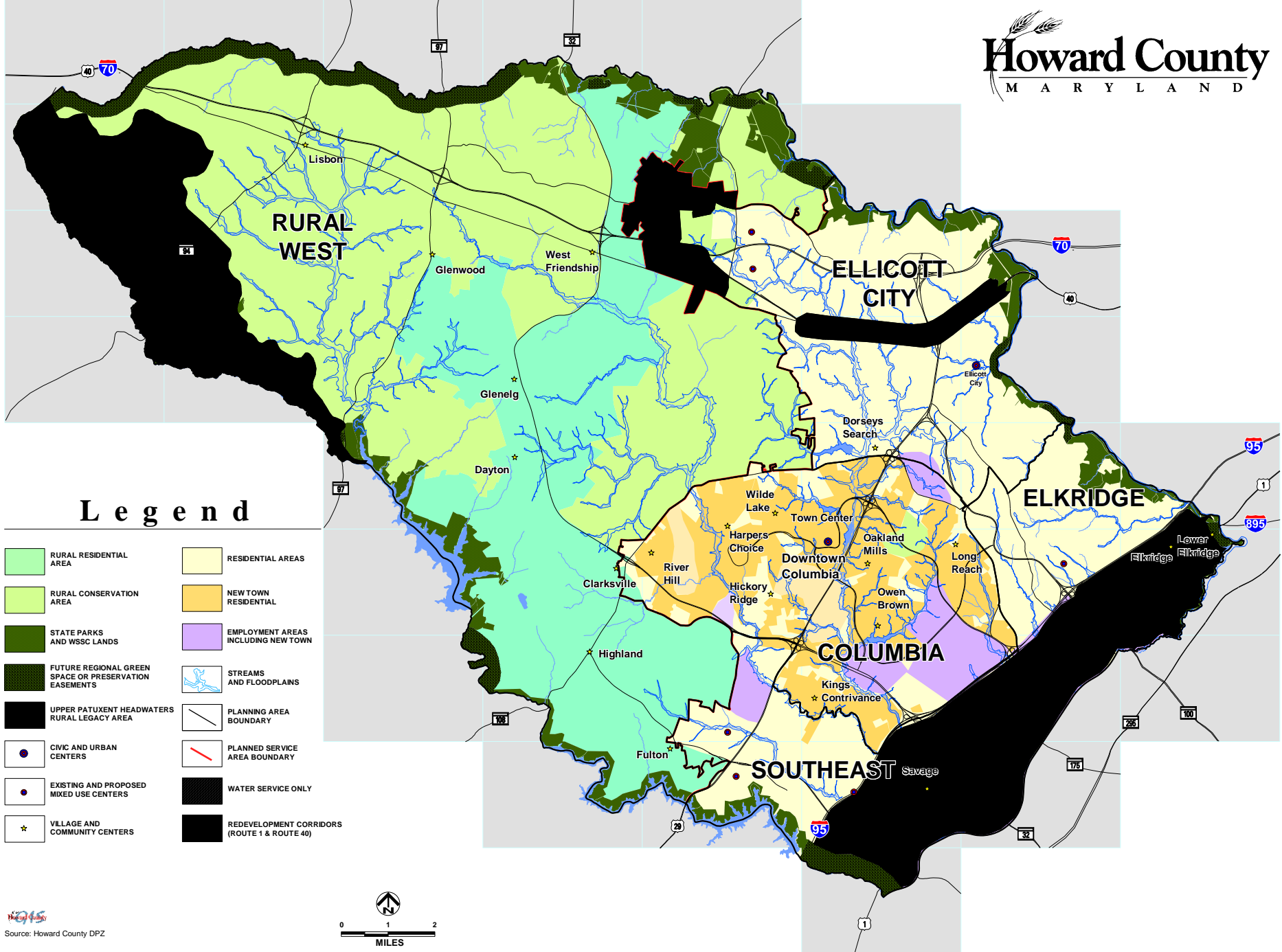
New Housing & Land Use



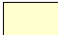








Residential Units by Development Stage in Howard County September 30, 2015



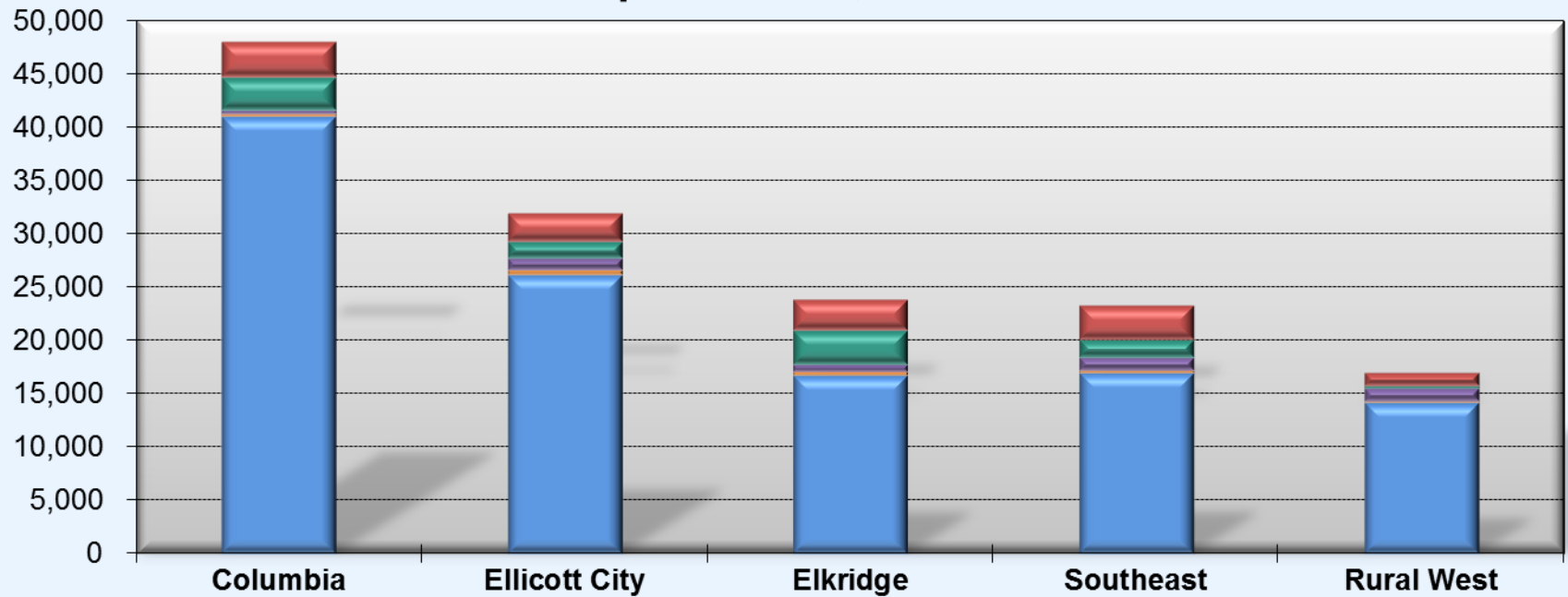
Source: Howard County DPZ, September 30, 2015



Legend

- | | | | |
|---|---|---|--|
|  | RURAL RESIDENTIAL AREA |  | RESIDENTIAL AREAS |
|  | RURAL CONSERVATION AREA |  | NEW TOWN RESIDENTIAL |
|  | STATE PARKS AND WSSC LANDS |  | EMPLOYMENT AREAS INCLUDING NEW TOWN |
|  | FUTURE REGIONAL GREEN SPACE OR PRESERVATION EASEMENTS |  | STREAMS AND FLOODPLAINS |
|  | UPPER PATUXENT HEADWATERS RURAL LEGACY AREA |  | PLANNING AREA BOUNDARY |
|  | CIVIC AND URBAN CENTERS |  | PLANNED SERVICE AREA BOUNDARY |
|  | EXISTING AND PROPOSED MIXED USE CENTERS |  | WATER SERVICE ONLY |
|  | VILLAGE AND COMMUNITY CENTERS |  | REDEVELOPMENT CORRIDORS (ROUTE 1 & ROUTE 40) |

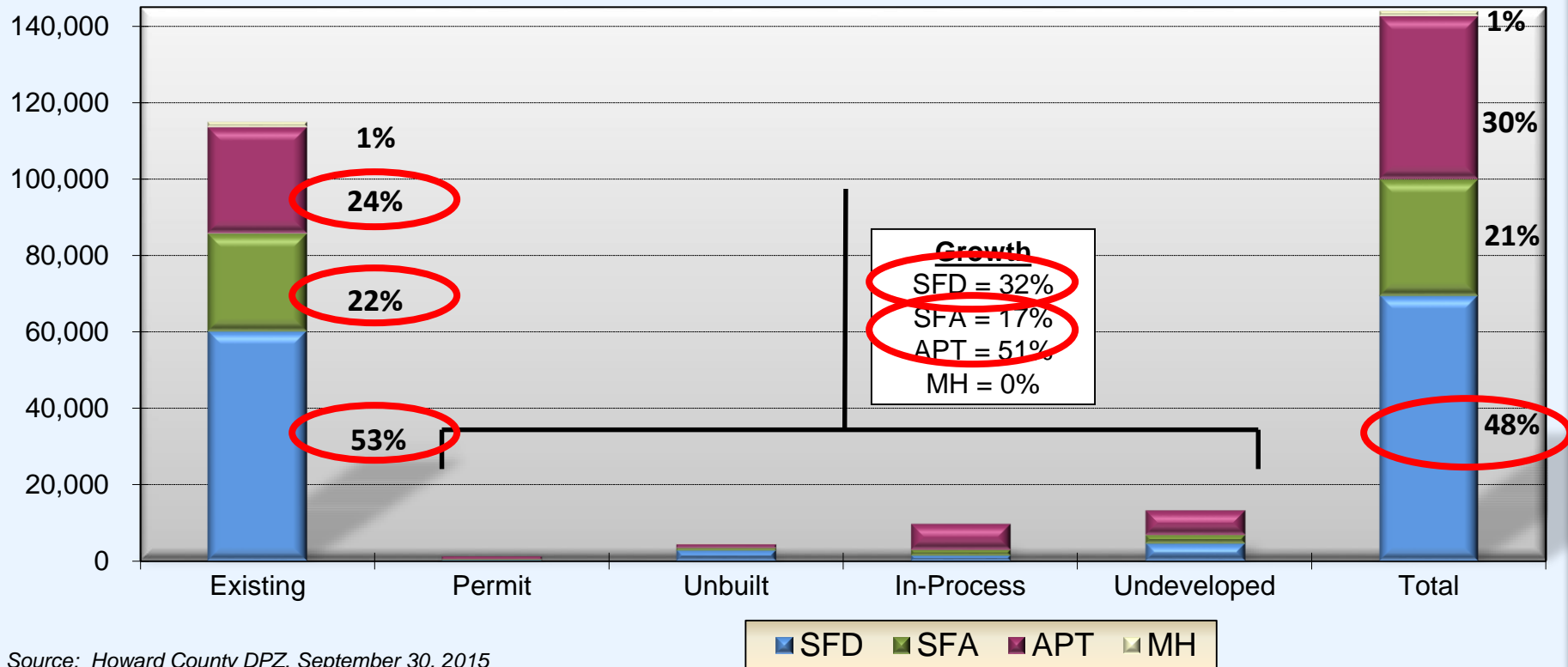
Residential Units by Development Stage in Howard County September 30, 2015



Source: Howard County DPZ, September 30, 2015

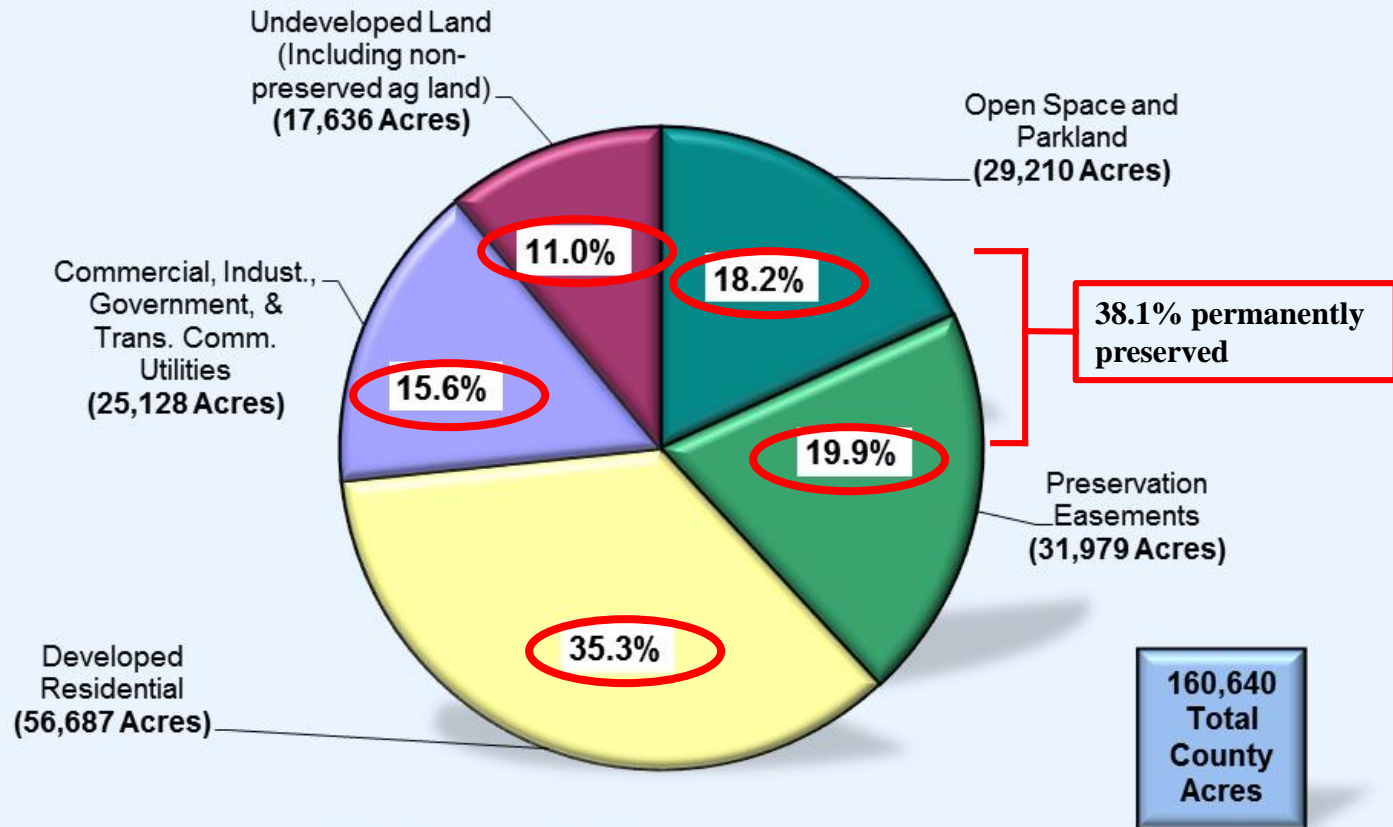


Residential Units by Development Stage in Howard County September 30, 2015



Source: Howard County DPZ, September 30, 2015

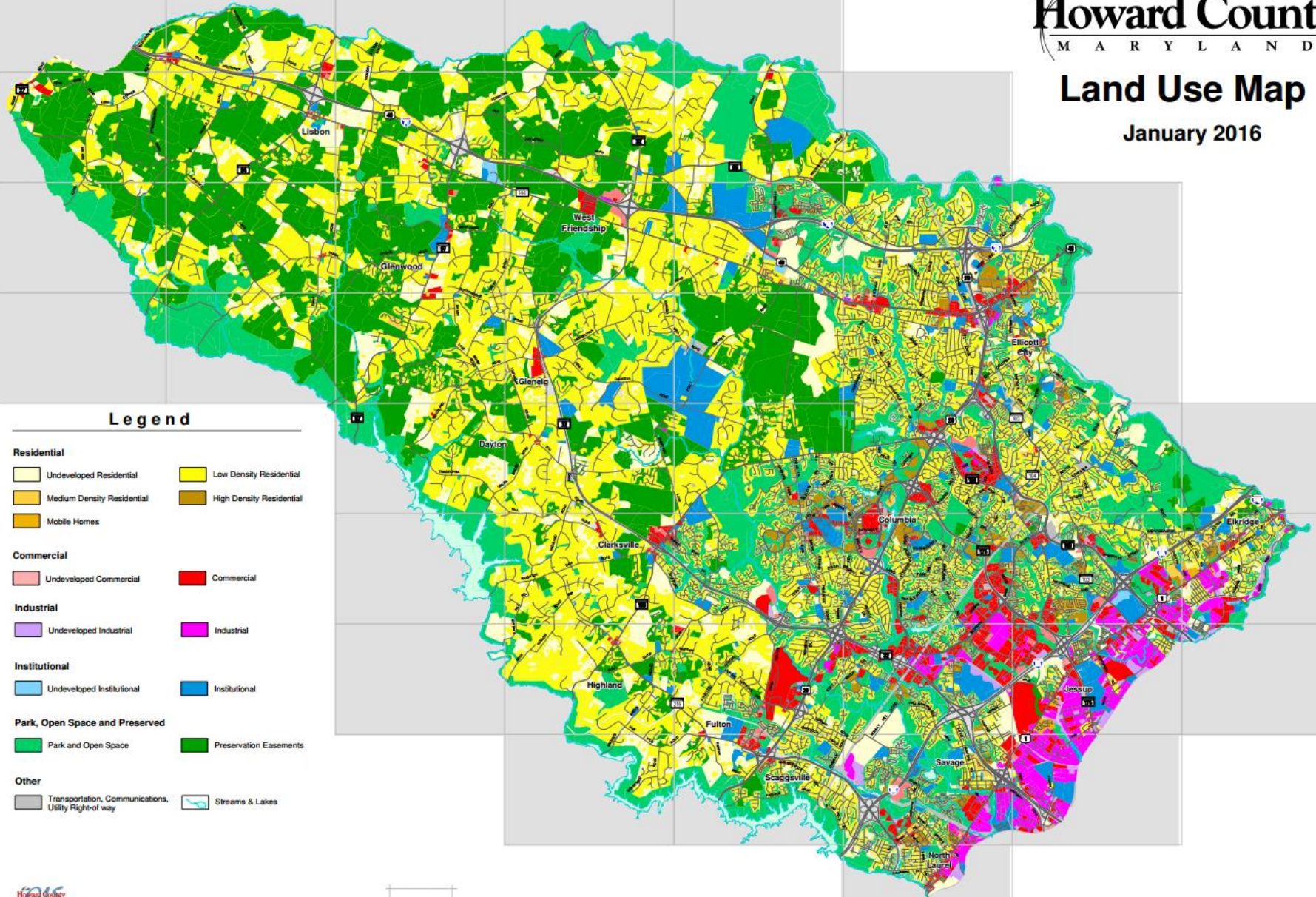
Howard County Land Use - September 30, 2015



Source: Howard County DPZ, September 30, 2015

Land Use Map

January 2016



Legend

Residential

- Undeveloped Residential
- Low Density Residential
- Medium Density Residential
- High Density Residential
- Mobile Homes

Commercial

- Undeveloped Commercial
- Commercial

Industrial

- Undeveloped Industrial
- Industrial

Institutional

- Undeveloped Institutional
- Institutional

Park, Open Space and Preserved

- Park and Open Space
- Preservation Easements

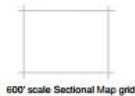
Other

- Transportation, Communications, Utility Right-of-way
- Streams & Lakes



This map provides a general overview of Howard County Land Use. For parcel specific information please contact the Division of Research, Howard County Department of Planning and Zoning. Quality control of Land Use data is continuing as of date of map production.

G:\MFP_Sp1_Projects\Land Use\Land Use Jan 2016.mxd



Increasing Diversity



Population by Race, 2000 & 2010

Howard County Population by Race -- 2000 to 2010

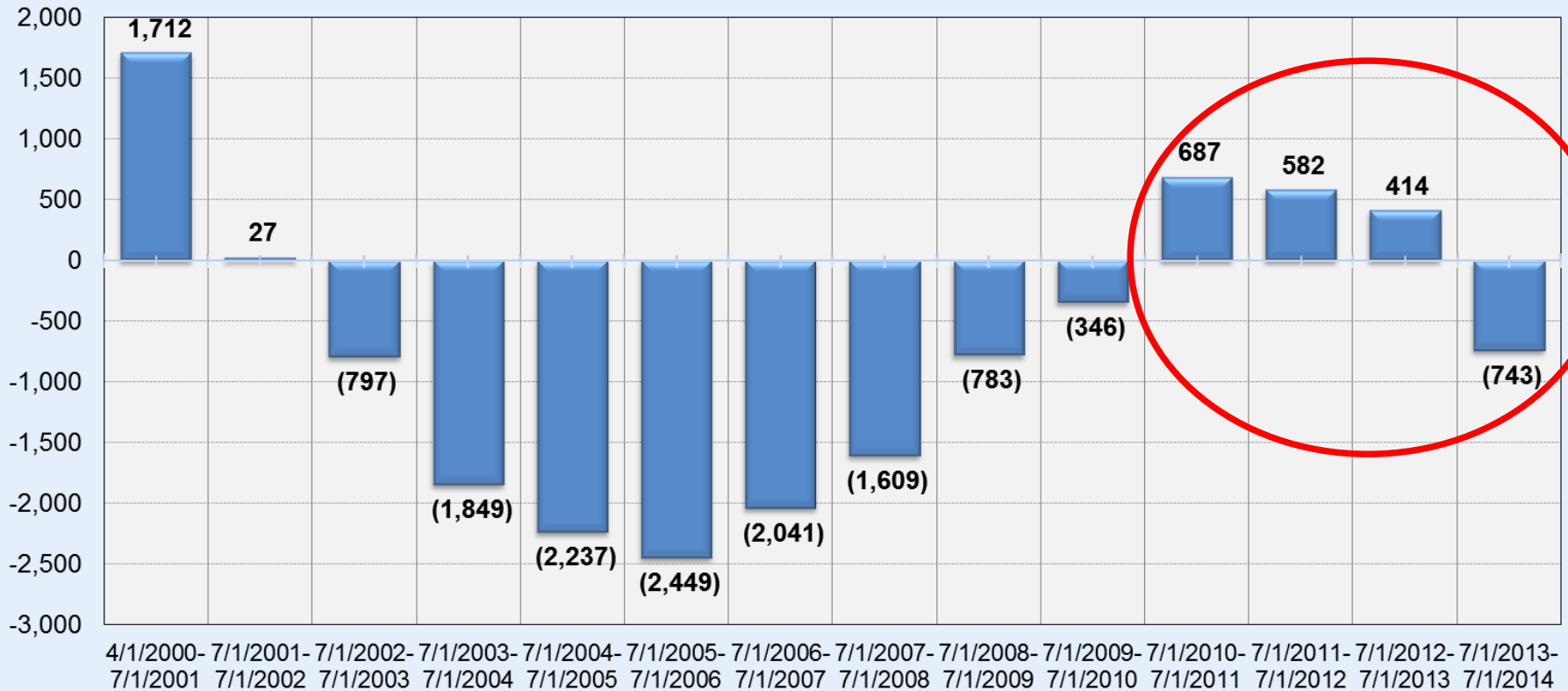
	2000		2010		Growth	
Population of One Race Alone (Non-Hispanic)	235,591	95.1%	261,585	91.1%	25,994	11.0%
White (Non-Hispanic)	180,010	72.6%	169,972	59.2%	(10,038)	-5.6%
African American (Non-Hispanic)	35,353	14.3%	49,150	17.1%	13,797	39.0%
Amer. Ind. & Alaska Native (Non-Hispanic)	515	0.2%	511	0.2%	(4)	-0.8%
Asian & Pacific Islander (Non-Hispanic)	19,057	7.7%	41,206	14.4%	22,149	116.2%
Some Other Race (Non-Hispanic)	656	0.3%	746	0.3%	90	13.7%
Population of Two or More Races (Non-Hispanic) (1)	4,761	1.9%	8,771	3.1%	4,010	84.2%
TOTAL NON-HISPANIC POPULATION	240,352	97.0%	270,356	94.2%	30,004	12.5%
TOTAL HISPANIC POPULATION (2)	7,490	3.0%	16,729	5.8%	9,239	123.4%
GRAND TOTAL POPULATION	247,842	100.0%	287,085	100.0%	39,243	16%

(1) This option was available for the first time in the 2000 Census.

(2) Hispanic Origin can be from any race.

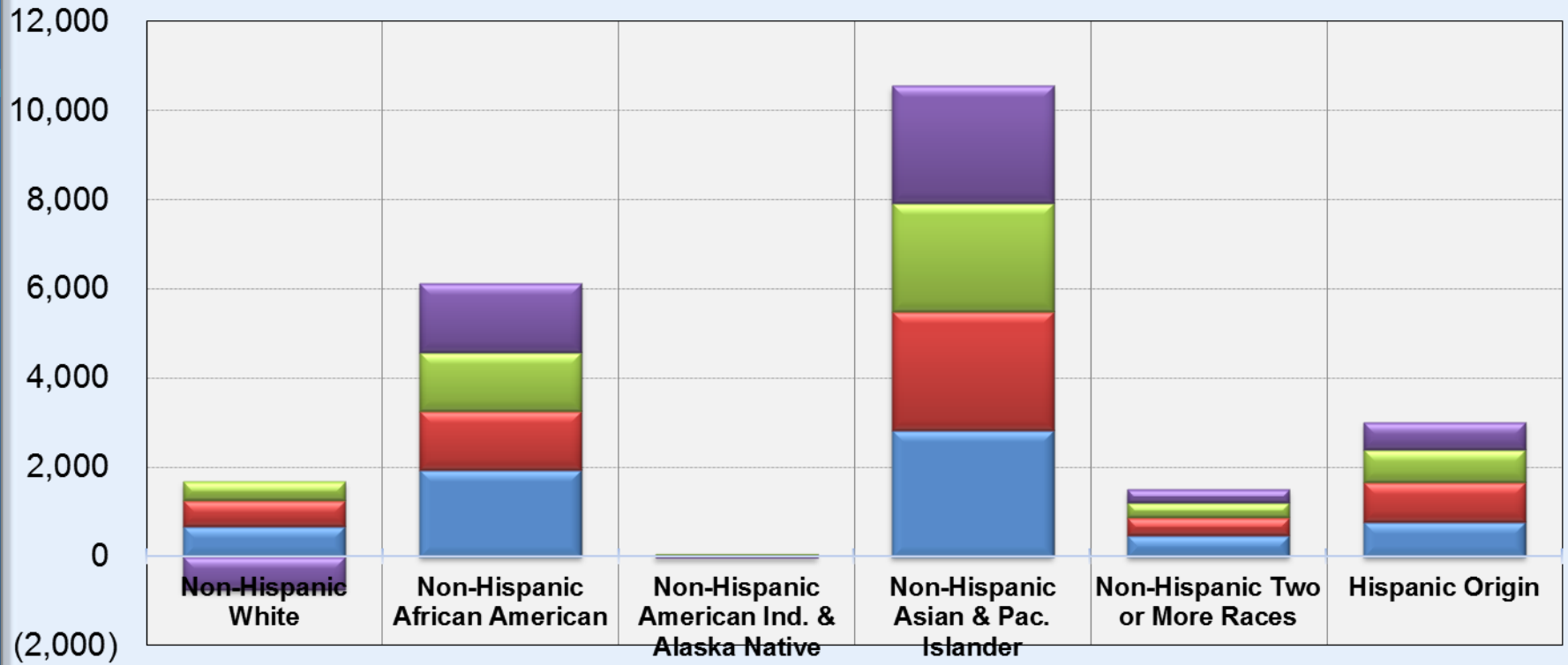
Source: U.S. Census Bureau

Estimated Annual Population Change for Non-Hispanic Whites in Howard County April 1, 2000 to July 1, 2014

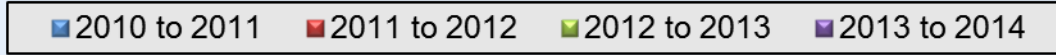


Source: U.S. Census Bureau

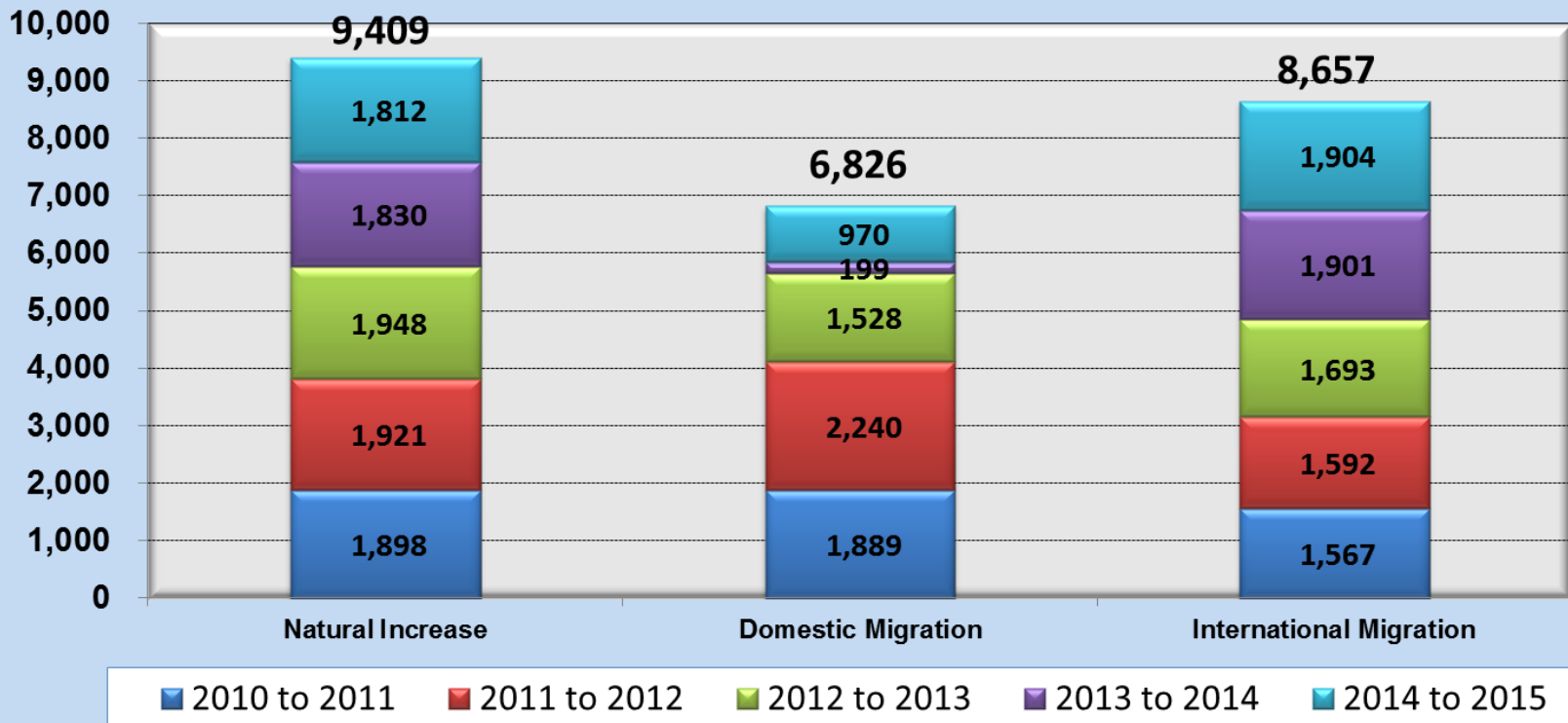
April 2010 to July 2014 Population Increase by Race in Howard County



Source: US Census Bureau

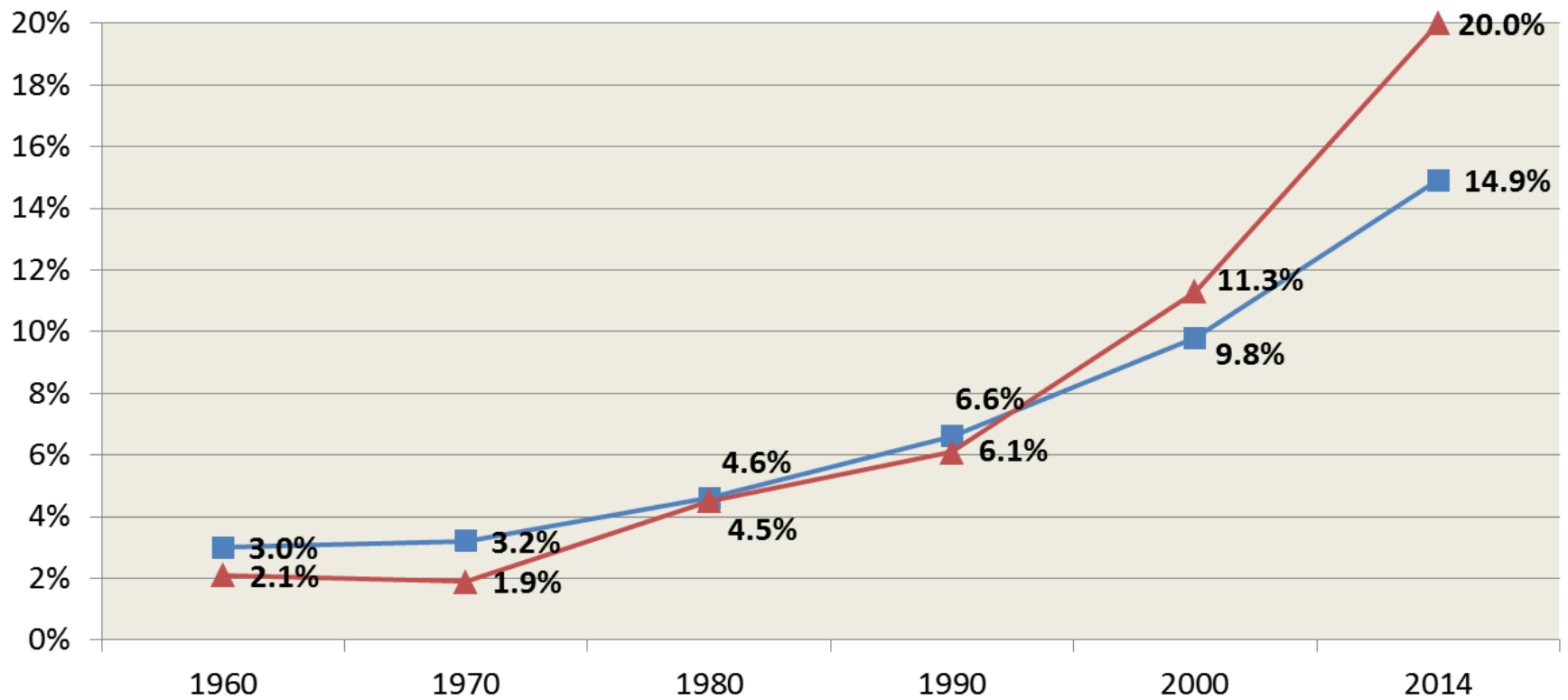


Howard County Population Increase by Component of Change July 1, 2010 to July 1, 2015



Source: Population Division, U.S. Census Bureau, release date March, 2016

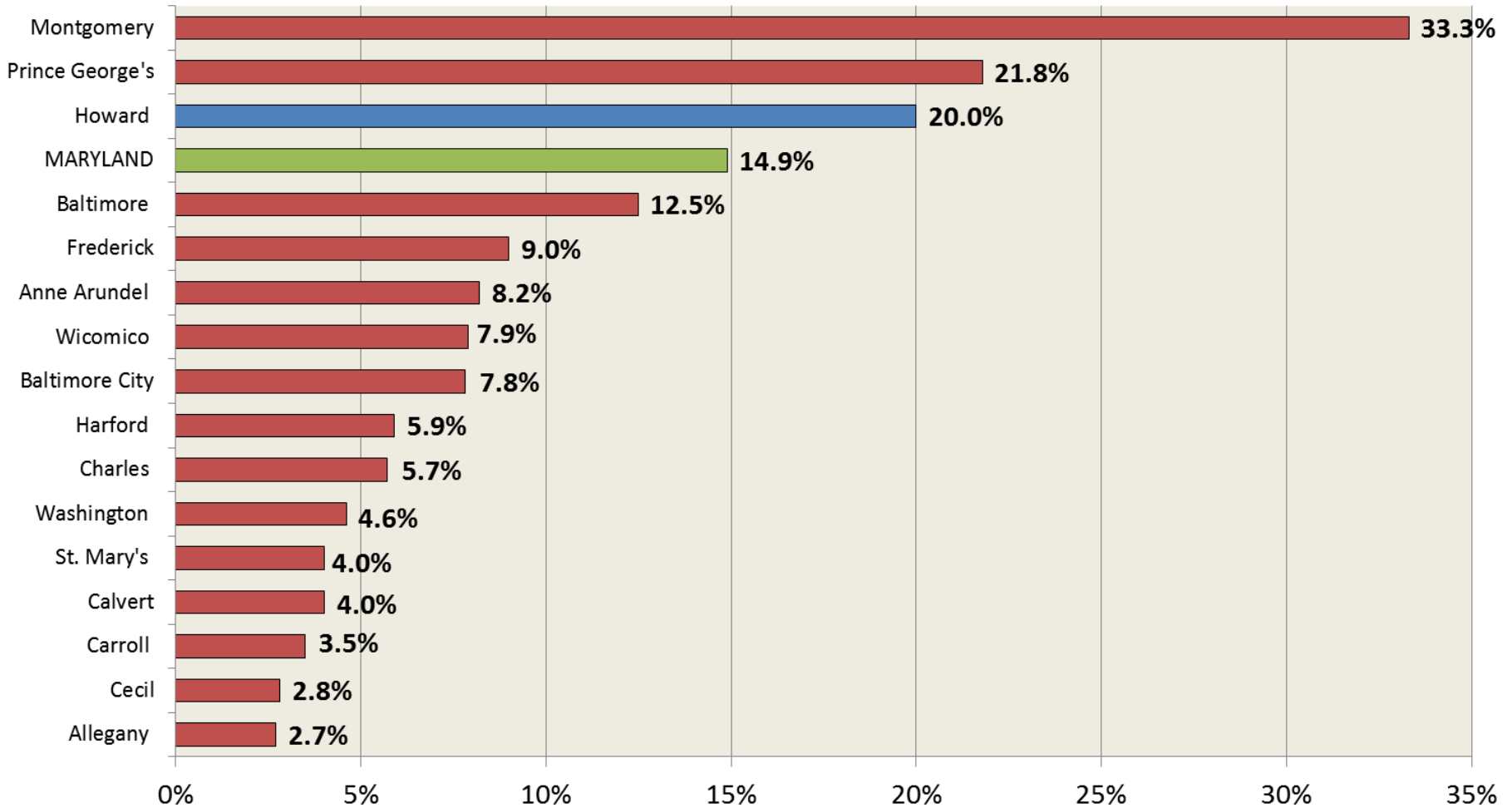
1960 to 2014 Percent Foreign Born - Maryland and Howard County



Source: 1960 - 2000 from Decennial Census, 2014 from American Community Survey

—■— Maryland —▲— Howard County

Percent Foreign Born in Maryland and its Jurisdictions, 2014 *



* Apparent differences may not be statistically significant at the 90 percent confidence interval

Source: 2014 American Community Survey

The Aging of the Population



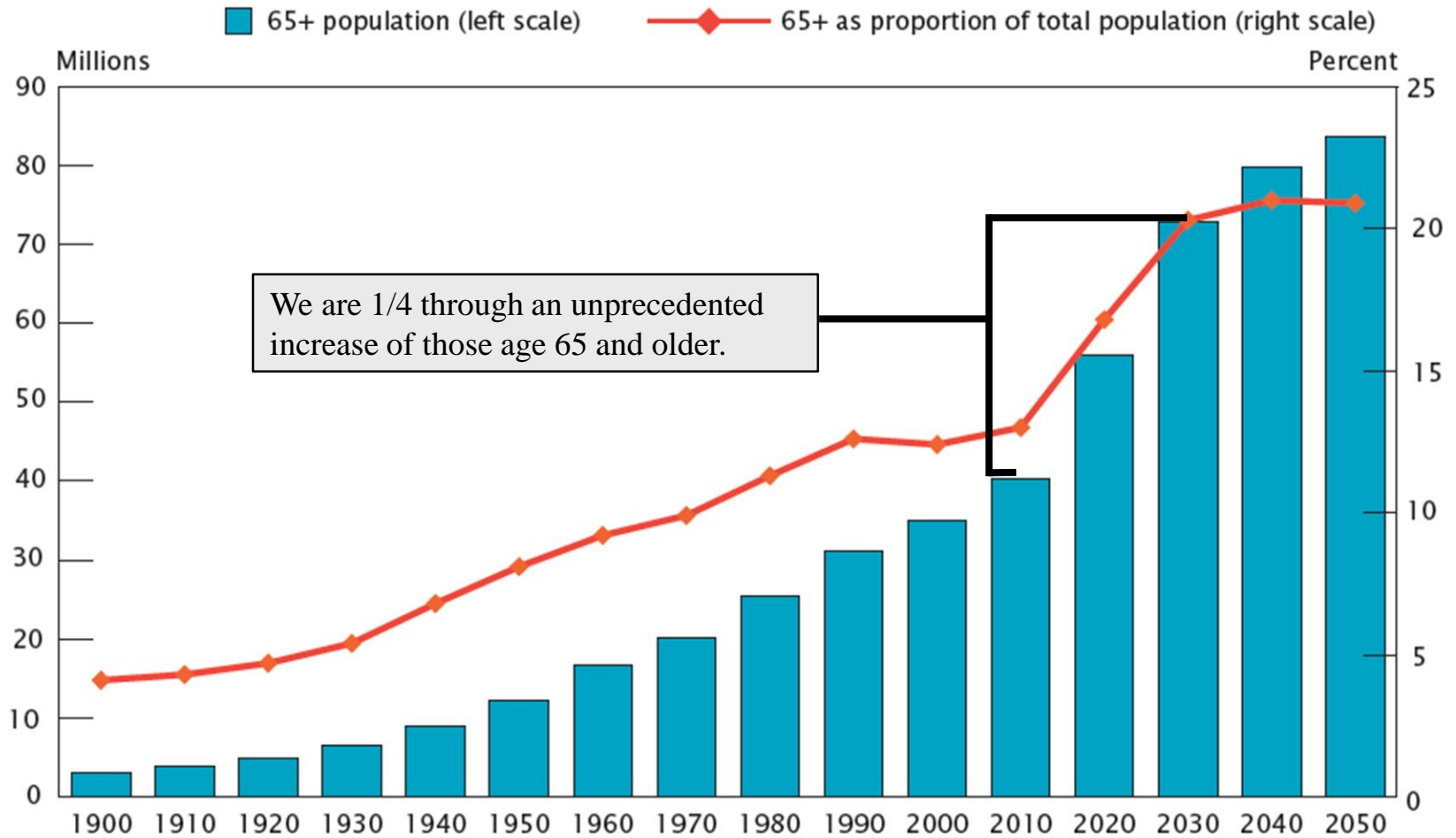
Findings: An Aging Nation

- Older population is projected to nearly double, growing from 43 Million in 2012 to 84 Million in 2050.
- By 2030, one in five Americans will be 65 years or older.
- Growth in the older population will be driven by the aging of the baby boomers over the next two decades.

Figure 1-1.

Population Aged 65 and Over: 1900 to 2050

(For information on confidentiality protection, nonsampling error, and definitions, see www.census.gov/prod/cen2010/doc/sf1.pdf)



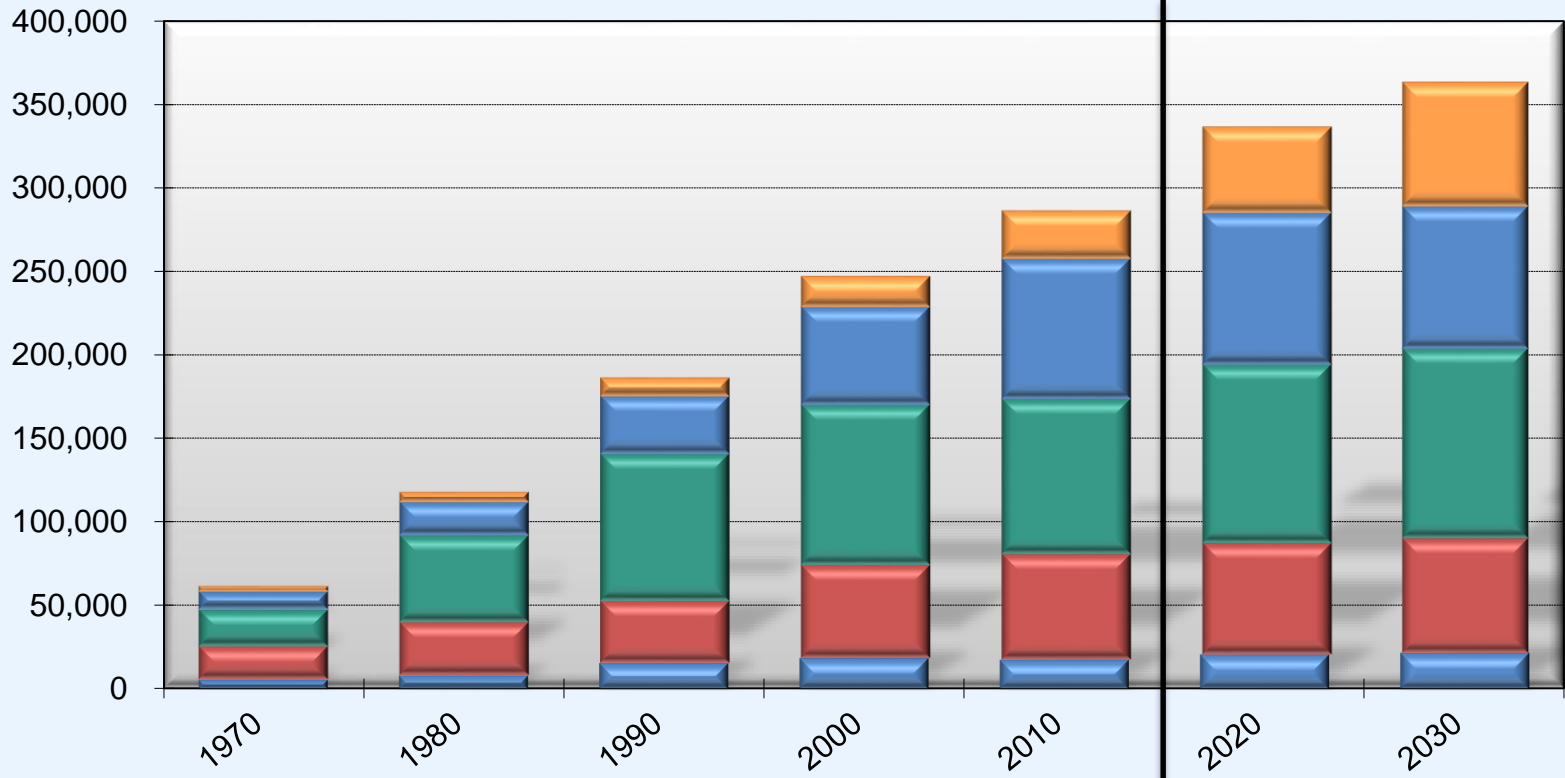
Sources: 1900 to 1940, and 1960 to 1980, U.S. Bureau of the Census, 1983; 1950, U.S. Bureau of the Census, 1953; 1990, U.S. Bureau of the Census, 1992; 2000, U.S. Census Bureau, 2001; 2010, U.S. Census Bureau, 2011; 2020 to 2050, U.S. Census Bureau, 2012a; 1900 to 2010, decennial census; 2020 to 2050, *2012 National Population Projections*, Middle series.

Population by Age, 1970 to 2030

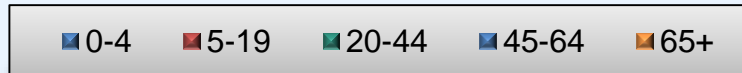
Howard County Population by Age, 1970-2030							
Age	1970	1980	1990	2000	2010	2020	2030
0-4	5,702	8,224	15,352	18,248	17,363	20,364	21,440
5-19	19,961	31,791	37,275	55,837	63,360	66,697	68,653
20-44	21,894	52,064	88,243	96,212	92,961	107,111	113,610
45-64	11,027	20,412	35,128	59,077	84,356	91,369	85,577
65+	3,327	6,081	11,330	18,468	29,045	51,510	74,370
TOTAL	61,911	118,572	187,328	247,842	287,085	337,051	363,650
0-4	9.2%	6.9%	8.2%	7.4%	6.0%	6.0%	5.9%
5-19	32.2%	26.8%	19.9%	22.5%	22.1%	19.8%	18.9%
20-44	35.4%	43.9%	47.1%	38.8%	32.4%	31.8%	31.2%
45-64	17.8%	17.2%	18.8%	23.8%	29.4%	27.1%	23.5%
65+	5.4%	5.1%	6.0%	7.5%	10.1%	15.3%	20.5%
TOTAL	100.0%	100.0%	100.0%	100.0%	100.0%	100.0%	100.0%

Source: U.S Census Bureau, Projections from MDP based on Round 8C

Howard County Population by Age 1970 to 2030



Source: U.S. Census Bureau, Projections from MDP cohort model based on Round 8C



Current Development



Higher Densities & Mixed Use



Downtown Columbia

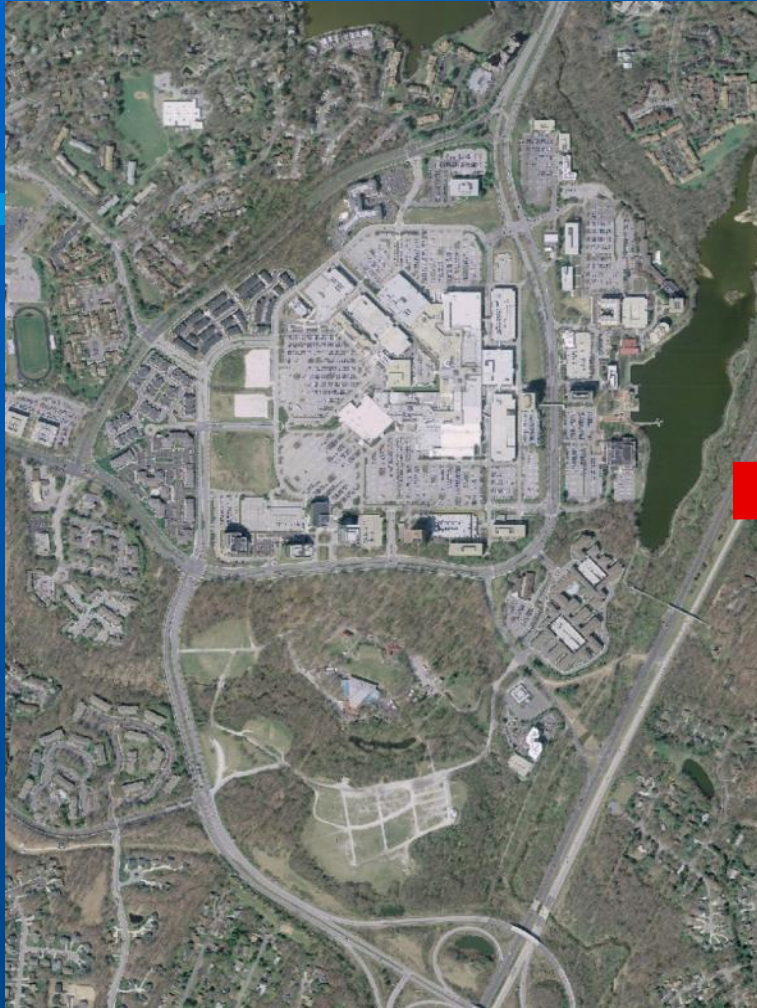
30 Year Plan Adopted Feb 1, 2010



The Evolution of Downtown Columbia

Today

Vision For The Future



Development Program:

Residential
Retail

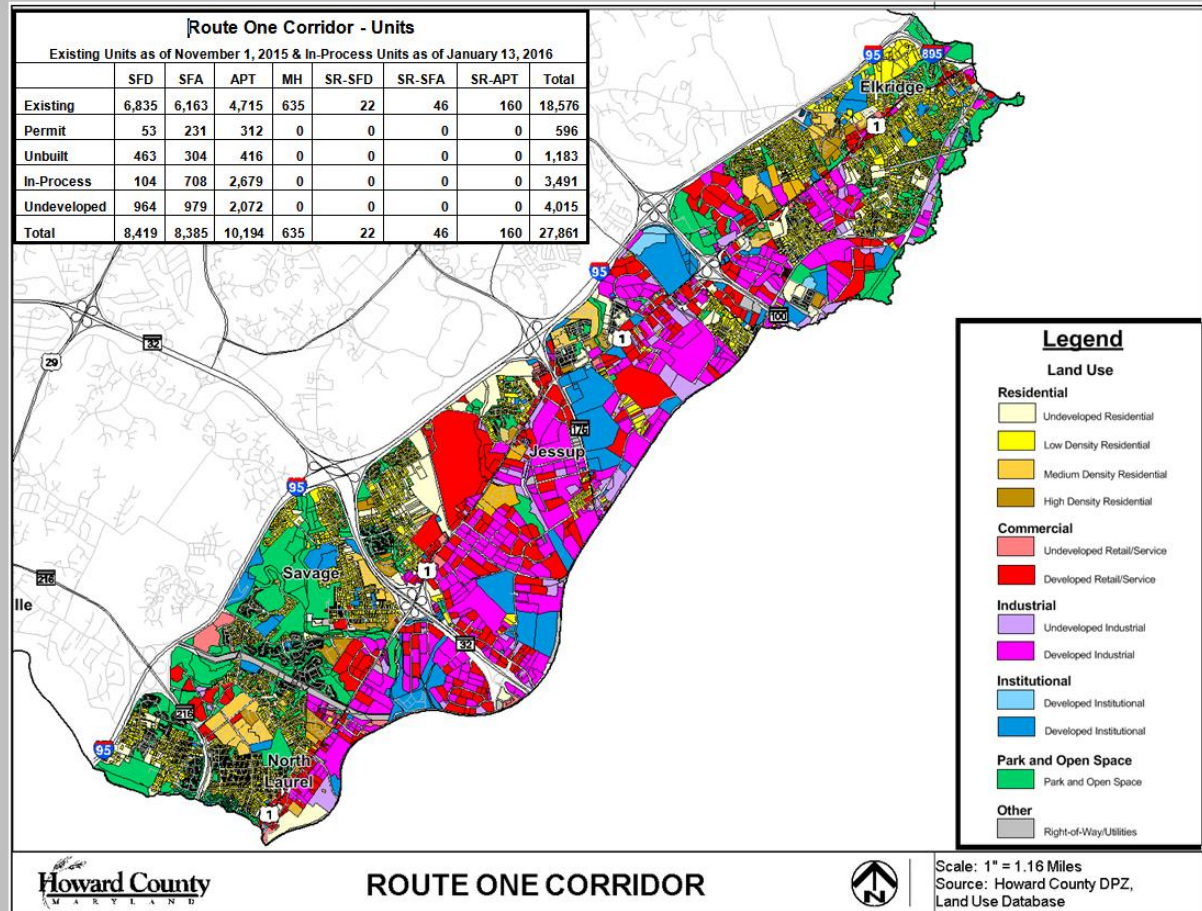
5,500 units
1,250,00 sq ft

Office
Hotel/Conference Center

4,300,000 sq ft
640 rooms

Route 1 Corridor - 3 Unique Districts

- **Corridor Activity Center**
 - Pedestrian oriented
 - 1st floor retail, office residential above
- **Transit Oriented Development**
 - Near MARC stations
 - Multistory office, dense residential, some retail
- **Corridor Employment**
 - Office, flex, manufacturing
 - No auto or warehouse
 - Limited retail



LIFE IS
CHANGE.
Growth is
optional.
Choose wisely.