



I-95 Access Improvements

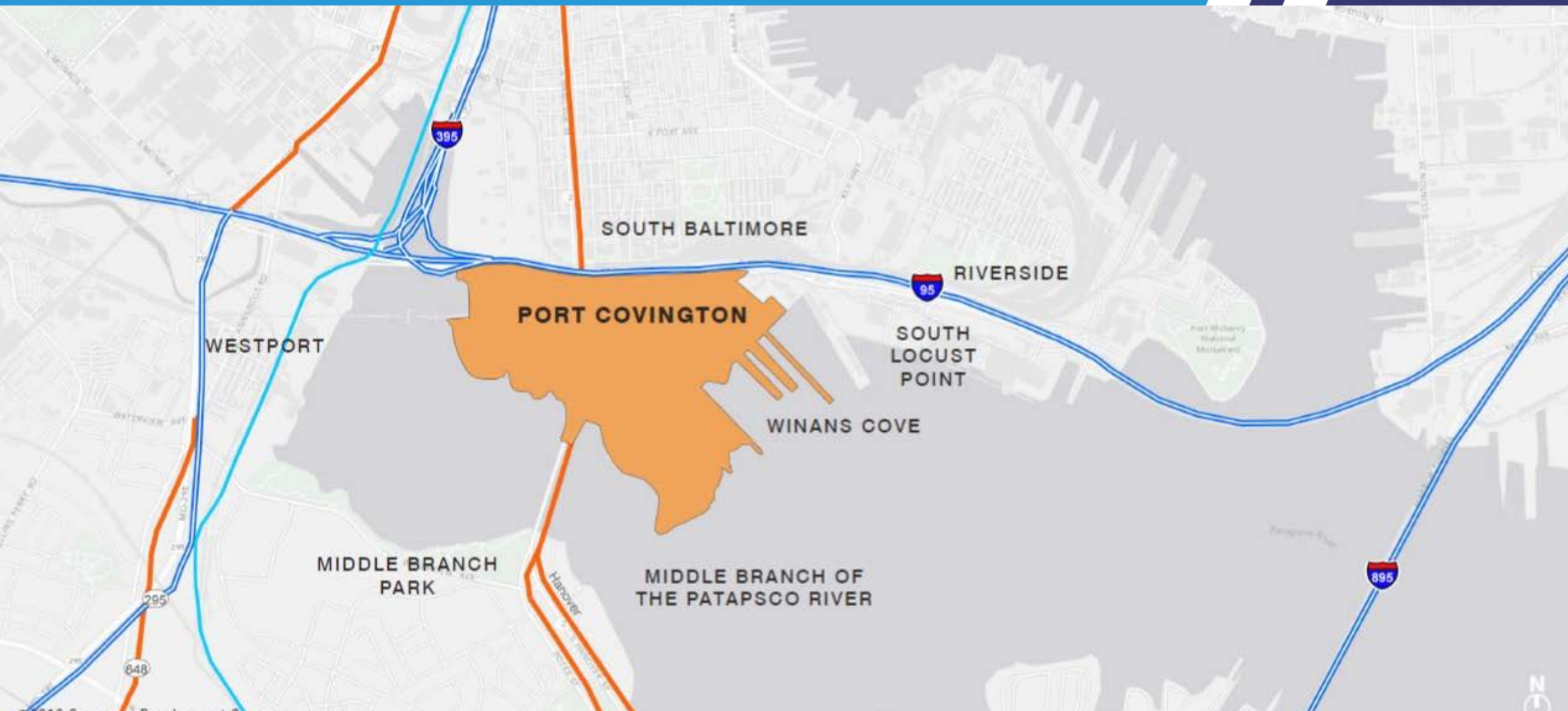
Environmental Assessment

August 2018

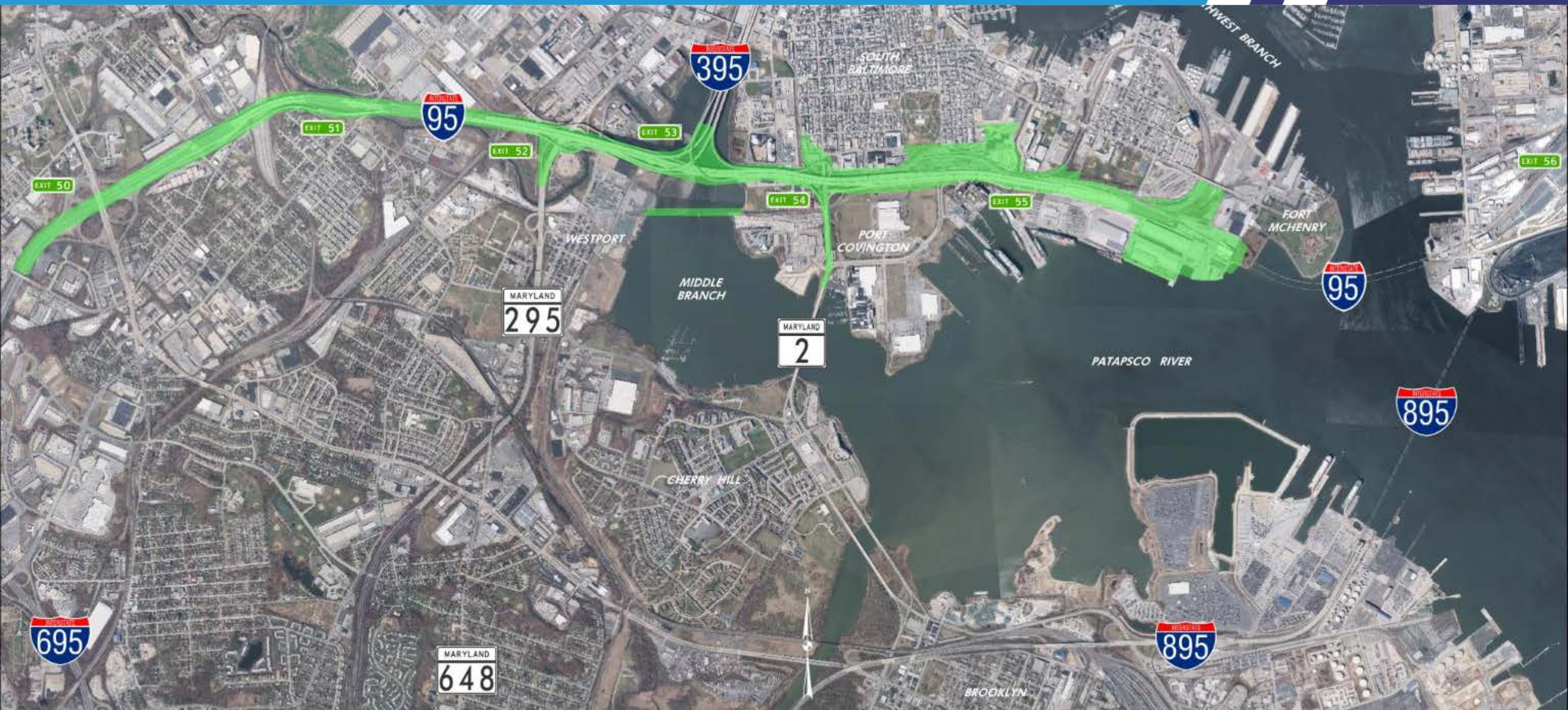




The Port Covington Peninsula



Study Corridor





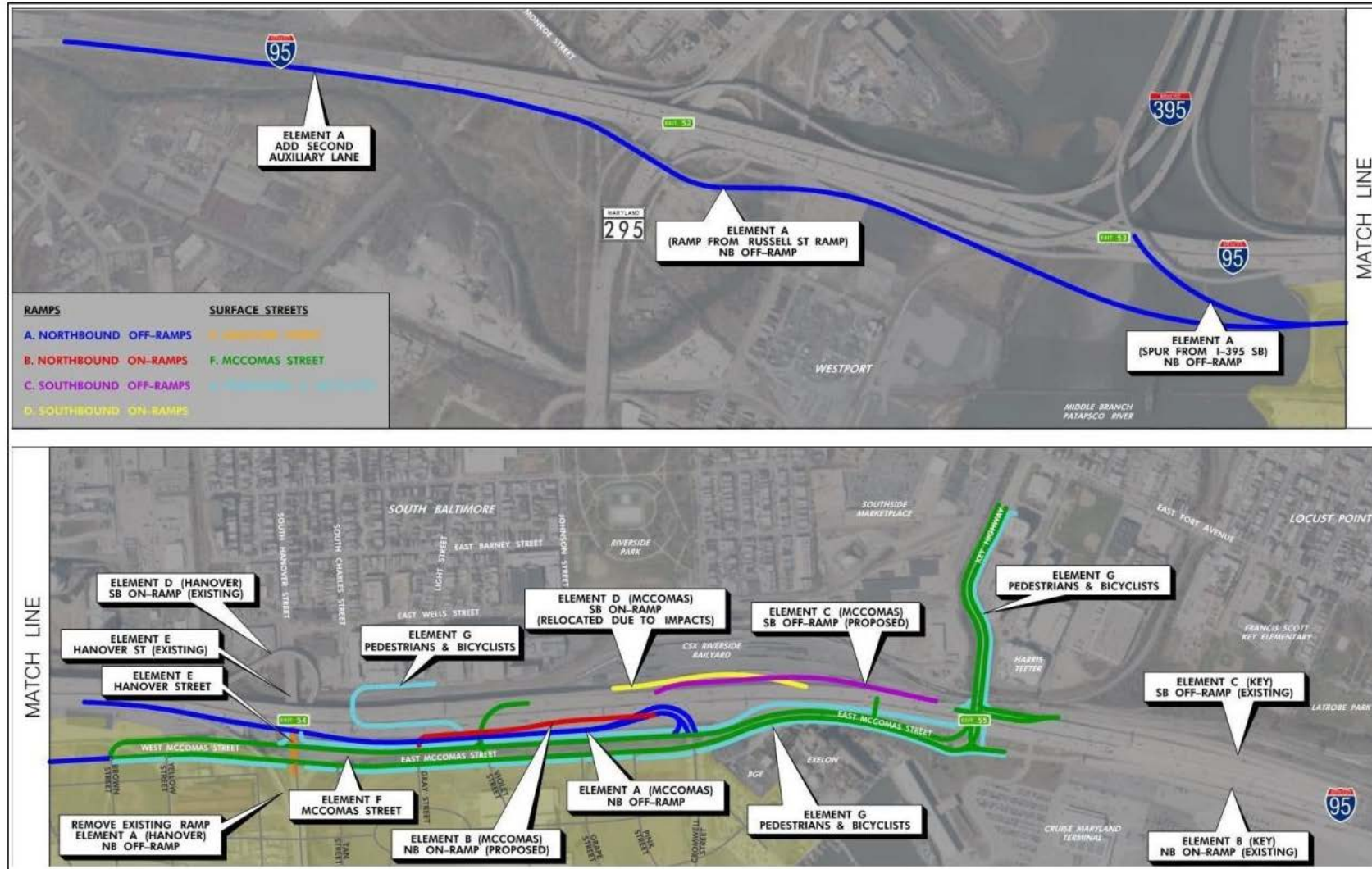
Purpose and Need

1. Ongoing and planned development in the Port Covington peninsula will result in **increased transportation demand** to Port Covington and increased traffic on I-95
2. Existing **capacity and roadway geometry not adequate** to meet projected traffic demands
3. Support for **economic development and land use changes** at Port Covington
4. **Limited multi-modal connections** around and across I-95 in the vicinity of Port Covington in Baltimore





Recommended Preferred Alternative





Estimated Costs

Project Element	Estimated Total Cost
Right-of-Way	\$15-\$20 million
A. NB I-95 Exit Movements	\$300-\$315 million
B. NB I-95 Entrance Movements	\$20-\$25 million
C. SB I-95 Exit Movements	\$25-\$30 million
D. SB I-95 Entrance Movements	\$10-\$15 million
E. Hanover Street North of McComas Street	\$0
F. McComas Street	\$60-\$65 million
G. Pedestrian and Bicycle Improvements	\$20-\$25 million
TOTAL	\$450-\$495 million