

December 13, 2023

PhillyFreightFinder

Freight Data Portal for the Delaware Valley

Baltimore Regional Transportation Board Freight Movement Task Force

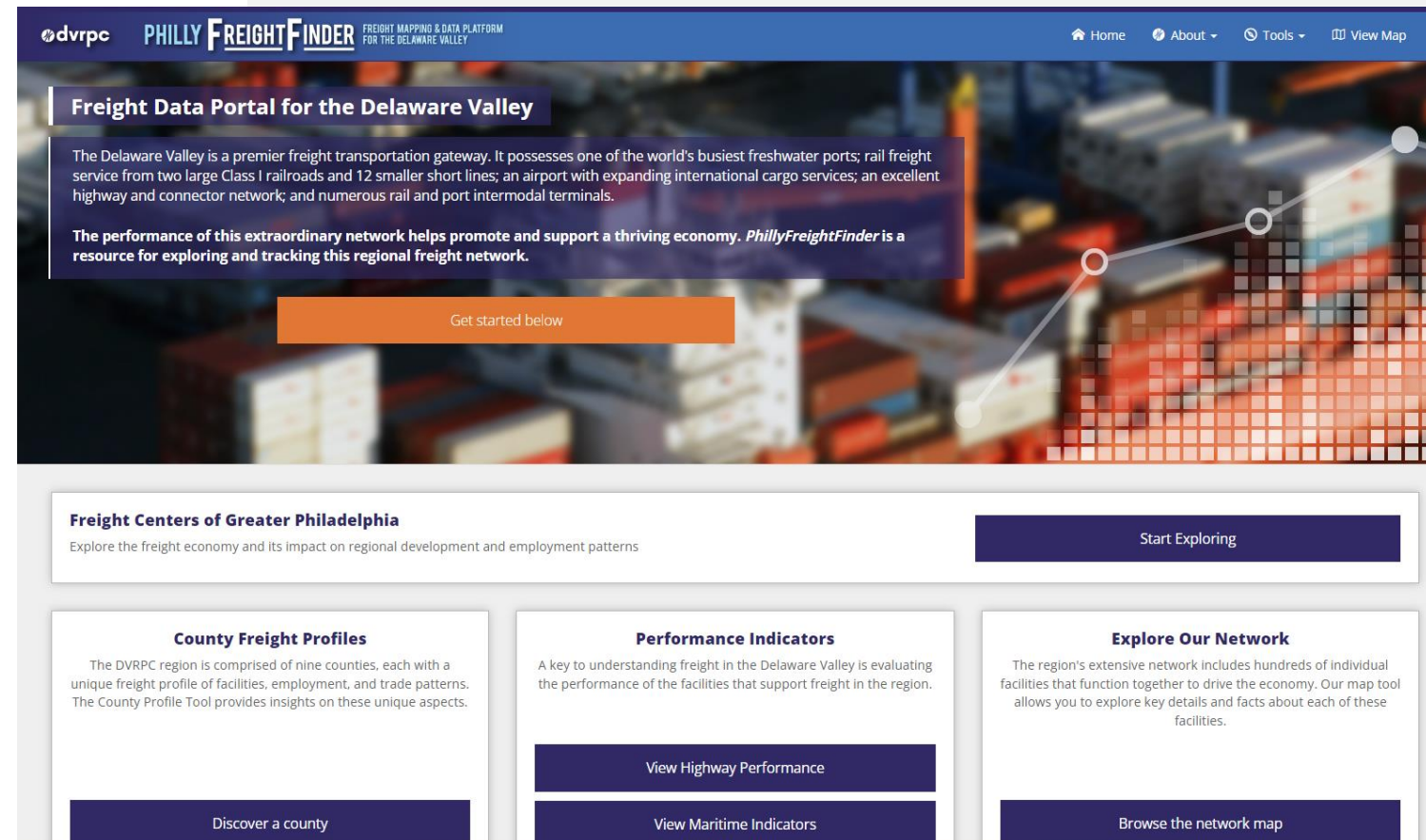


Kristen Scudder
Freight Program Manager
Delaware Valley Regional Planning Commission

An **online, interactive** platform for sharing freight network **data to enhance the understanding** of performance and value of freight in the regional economy

LAUNCHED IN 2013

With support from the DVRPC Freight Advisory Committee, the initial product was made public in 2013. The FAC assisted with identification of data and included a mix of public and private-sector members.



Why build *PhillyFreightFinder*

- Expand reach of freight planning efforts
- Improve visibility + availability of freight data
- Educate regional planners and the public
- Develop better data sharing with public- and private-sectors



Twenty Years of Technical Studies
PhillyFreightFinder offered a new platform for putting data in the hands of those who needed it; beyond the countless printed reports sitting on shelves.

Value to our partners and to us

- County planners have expanded freight planning capacity
- Engaged new partners (public + private)
- Centralized, accessible data resource for region
- Foundation for additional performance measure tracking

ADDED VALUE TO OUR WORK

being a resource **improves visibility** of all our products and **improves the quality and level** of input we get in our process

Components of PhillyFreightFinder

FRONTEND APPLICATION

- Built 100% in-house
- Flexible, lightweight
- Open Source code
- Independent of Esri stack



BACKEND DATA WAREHOUSE

- ArcGIS Server + PostgreSQL
- Python for data intake
- Automation of data updates built-in to workflow



Data, data, and more data!

PRIORITIZE DATA

- essential to understanding the **intermodal supply** for freight movements;
- that explains freight demand and **supply-chain logic**; and
- that measures **system performance**.

4
internal

4
private

11
public



Evaluation of Data

CONSIDERATIONS

- Practical use or application
- Cost to acquire
- Time/cost of processing
- Computational requirements
- Utility and availability over time

WHAT WE LEARNED

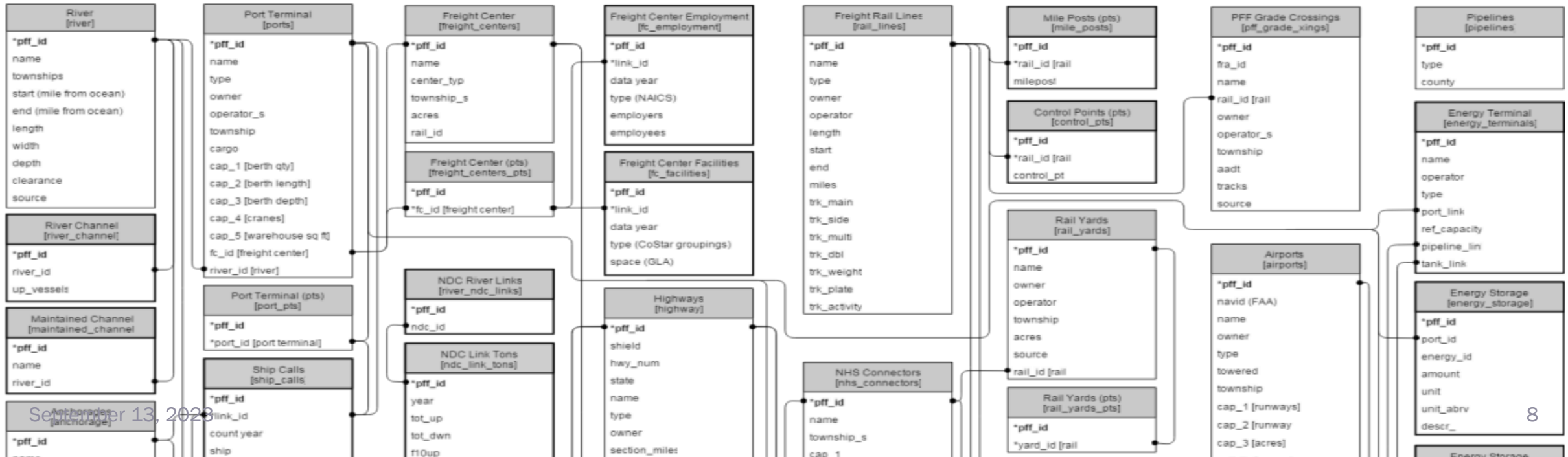
- **Recency/frequency** is a key consideration
- **Consistency and reliability** impact the utility of data for planning and tracking purposes
- Telling the story of freight with data requires an ongoing commitment

TOOLS WE USE FOR DATA MANAGEMENT



Schema Design

- Helpful step to understand context/relationships
- Key for planning optimization
- Provides documentation
- Foundation for Extract-Transform-Load process



- Only what we need
- Optimize for analysis/use
- Data validation checks

WHAT SHOULD WE AUTOMATE?

```
import urllib2
from operator import itemgetter
import yaml, csv

csa_data = []
top_twofive = []
port_lookup = []

url = 'http://api.census.gov/data/2013/acs5?
get=NAME,B01001_001E&for=metropolitan+statistical+area/micropolitan+statistical+area:*&key=f1ebba0078fa76b97
94f7070402b4b72095564b1'
response = urllib2.urlopen(url).read()
parsed_json = yaml.safe_load(response)

for msa in parsed_json[1:]:
    csa_data.append([msa[0],int(msa[1]),msa[2]])

sorted_msa = sorted(csa_data, key=itemgetter(1), reverse=True)

for msa in sorted_msa[:25]:
    top_twofive.append(msa[2])

print top_twofive

with open('port-msa-match.csv', 'rb') as f:
    reader = csv.reader(f)
    for row in reader:
        if row[5] in top_twofive:
            port_lookup.append(row)
    print port_lookup
```

KEY CONSIDERATIONS

automation is an effective tool to reduce future work **but** dependent on data source consistency. Error reporting and log tables are essential

Open Freight App



dvrpc PHILLY FREIGHT FINDER Home About Tools View Map

Open Freight App

Open Freight App is a project by the Delaware Valley Regional Planning Commission (DVRPC) to share with regional and national transportation planning partners the framework that is the basis for the [PhillyFreightFinder](#) web mapping and data application. Through this effort, DVRPC hopes that county planning agencies, metropolitan planning organizations and state departments of transportation, and economic development agencies can leverage this framework to further their efforts in making freight transportation data public. By utilizing the Open Freight App framework, rather than building from scratch, planning agencies can focus their time and resources on the development of data sets that can serve to improve the access to information on freight facilities and their role in economic development and transportation across the country. Open Freight App would serve as a self-hosted solution to offer these datasets to other planners, economic developers, public officials, decision-makers and the general public.

[View Project on GitHub](#)

Details

Open Freight App, is a white-label, open source version of the DVRPC [PhillyFreightFinder](#) application. This version is available for download and open for replication by any user. This version will have no branding or color styling applied and a standardized icon set will be provided for a sample set of data. In addition, the project will include the following:

- Full documentation and guide on:
 - Adding map functionality for layers and features
 - Creating info windows for feature data
 - Creating and modifying legend and layer controls
 - Populating search criteria
 - Converting ArcGIS Shapefiles to lightweight GeoJSONs for use in the map
 - and more!
- Fully commented versions of all necessary HTML, JavaScript and CSS files
- A starter set of freight facility icons
- License and credit materials

Advanced coding support is not included with this product. While staff at DVRPC can field general questions and assist with certain aspects of the project, formal support in the form of coding, styling, graphic design and advanced development must be done by an outside consultant. If you require more advanced support please contact us for more information.

Product Solutions Open Source Pricing Search or jump to... Sign in Sign up

DVRPCfreight / open-freight-app Public Notifications Fork 6 Star 12

<> Code Issues 6 Pull requests Actions Projects Security Insights

master 3 branches 0 tags Go to file Code

DVRPCfreight Merge pull request #12 fr...	2172c02	on Feb 18, 2016	24 commits
data	Initial commit	9 years ago	
lib	Fix to table/infobox_ height issues	7 years ago	
.gitignore	Add proper selected icon support	8 years ago	
LICENSE.md	Initial commit	9 years ago	
README.md	Update README.md	9 years ago	
index.html	Initial commit	9 years ago	

README.md

Open Freight App

Open Freight App is a project by the Delaware Valley Regional Planning Commission (DVRPC) to share with regional and national transportation planning partners the template and tools that are the basis for the [PhillyFreightFinder](#) web mapping and data application. Through this effort, DVRPC hopes that county planning agencies, metropolitan planning organizations and state departments of

About
No description, website, or topics provided.
Readme
View license
Activity
12 stars
2 watching
6 forks
Report repository

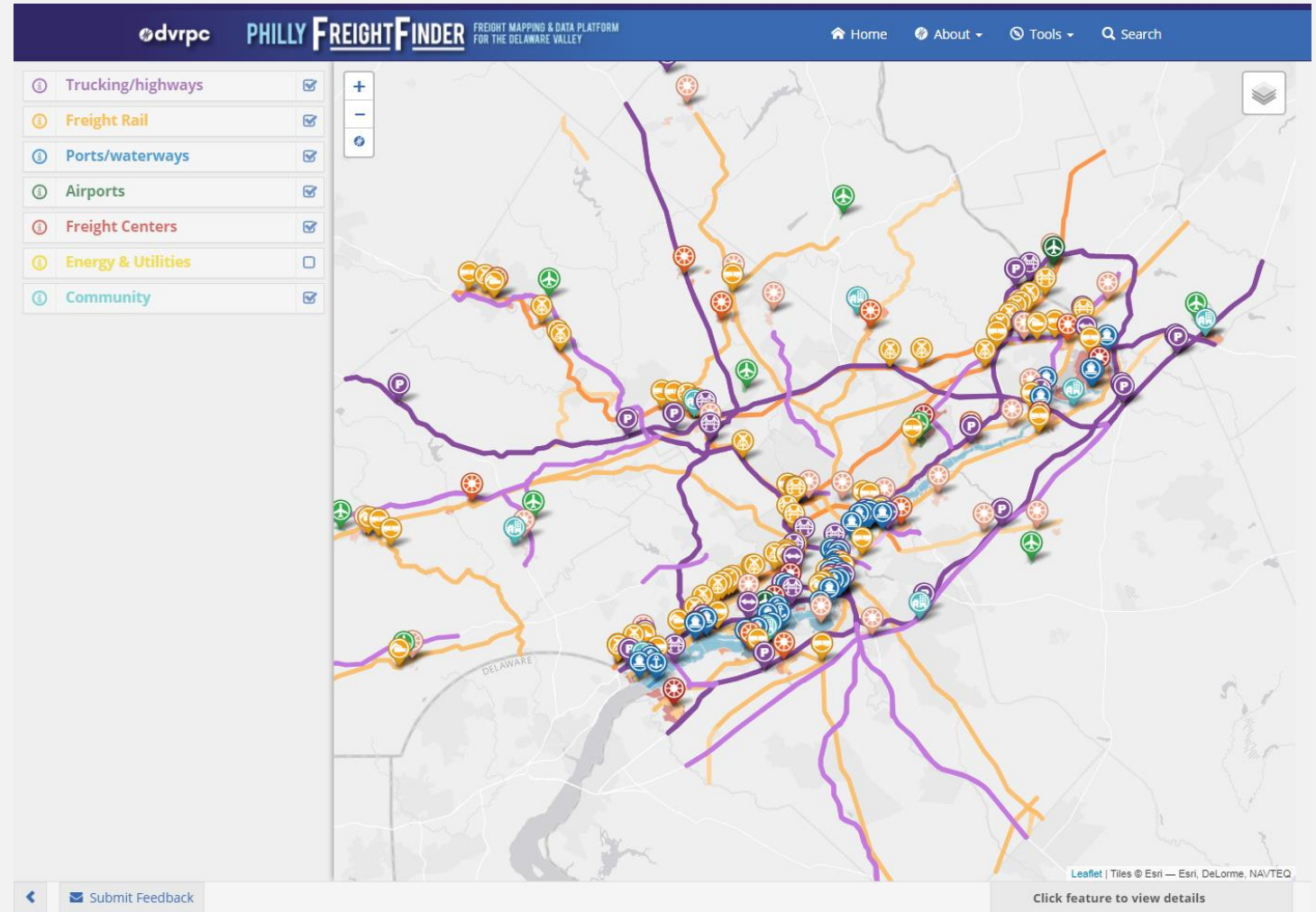
Releases
No releases published

Packages
No packages published

Languages

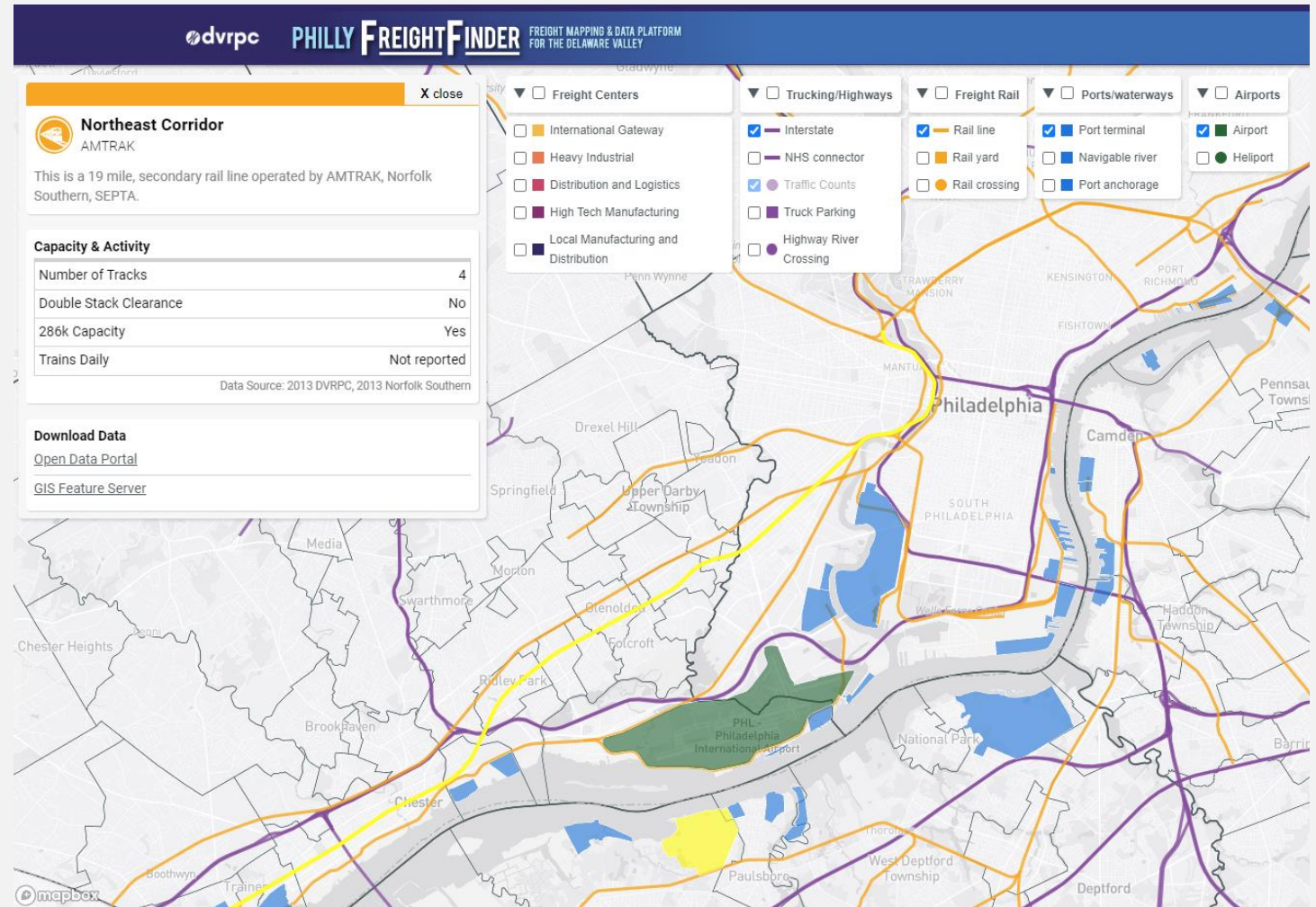
Evolution of Philly Freight Finder

- Addition of tools over time
 - County Profiles
 - Maritime Indicators
 - Highway Performance Measures
 - Freight Center Interactive Story
- Data updates- challenge to maintain regular maintenance
- New and better data practices
- Other agency data center tools
- What's next?



Evolution of Philly Freight Finder

- Addition of tools over time
 - County Profiles
 - Maritime Indicators
 - Highway Performance Measures
 - Freight Center Interactive Story
- Data updates- challenge to maintain regular maintenance
- New and better data practices
- Other agency data center tools
- What's next?



Thank You

Kristen Scudder

Freight Program Manager

Office of Freight and Clean Transportation

Delaware Valley Regional Planning Commission

kscudder@dvrpc.org

215.238.2939

PhillyFreightFinder: <http://dvrpc.org/webmaps/phillyfreightfinder>

Open Freight App: <http://dvrpcfreight.github.io/open-freight-app/>

Freight Data Portal for the Delaware Valley

The Delaware Valley is a premier freight transportation gateway. It possesses one of the world's busiest freshwater ports; rail freight service from two large Class I railroads and 12 smaller short lines; an airport with expanding international cargo services; an excellent highway and connector network; and numerous rail and port intermodal terminals.

The performance of this extraordinary network helps promote and support a thriving economy. *PhillyFreightFinder* is a resource for exploring and tracking the Philadelphia-Camden-Trenton regional freight network.

Get started below

County Freight Profiles

The DVRPC region is comprised of nine counties, each with a unique freight profile of facilities, employment, and trade patterns. The County Profile Tool provides insights on these unique aspects.

Explore a county

Performance Indicators

A key to understanding freight in the Delaware Valley is evaluating the performance of the facilities that support freight in the region.

View Highway Performance

View Maritime Indicators

Explore Our Network

The region's extensive network includes hundreds of individual facilities that function together to drive the economy. Our map tool allows you to explore key details and facts about each of these facilities.

Browse the network map

Freight Data Portal for the Delaware Valley

The Delaware Valley is a premier freight transportation gateway. It possesses one of the world's busiest freshwater ports; rail freight service from two large Class I railroads and 12 smaller short lines; an airport with expanding international cargo services; an excellent highway and connector network; and numerous rail and port intermodal terminals.

The performance of this extraordinary network helps promote and support a thriving economy. *PhillyFreightFinder* is a resource for exploring and tracking the Philadelphia-Camden-Trenton regional freight network.

Get started below

County Freight Profiles

The DVRPC region is comprised of nine counties, each with a unique freight profile of facilities, employment, and trade patterns. The County Profile Tool provides insights on these unique aspects.

Explore a county

Performance Indicators

A key to understanding freight in the Delaware Valley is evaluating the performance of the facilities that support freight in the region.

View Highway Performance

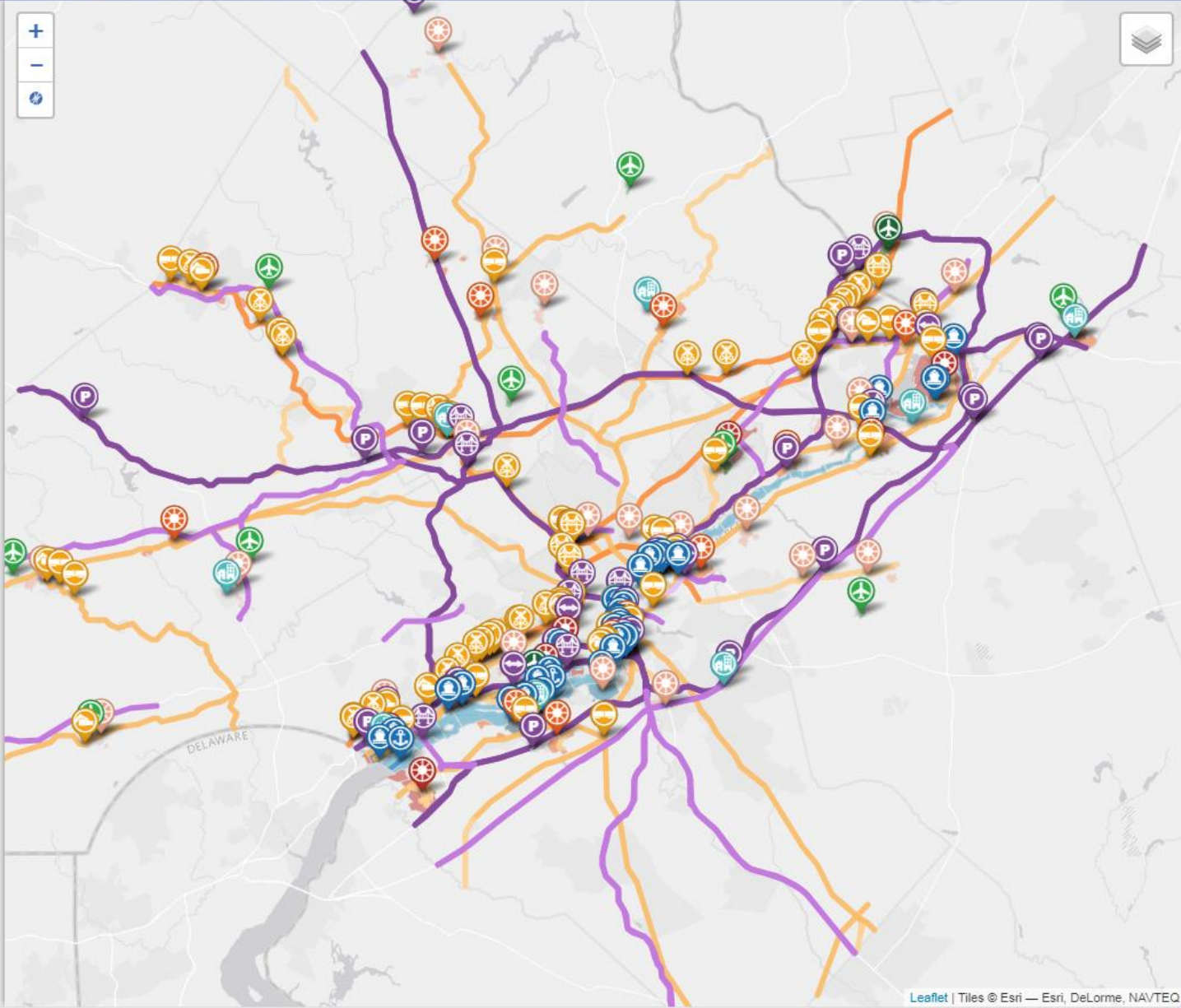
View Maritime Indicators

Explore Our Network

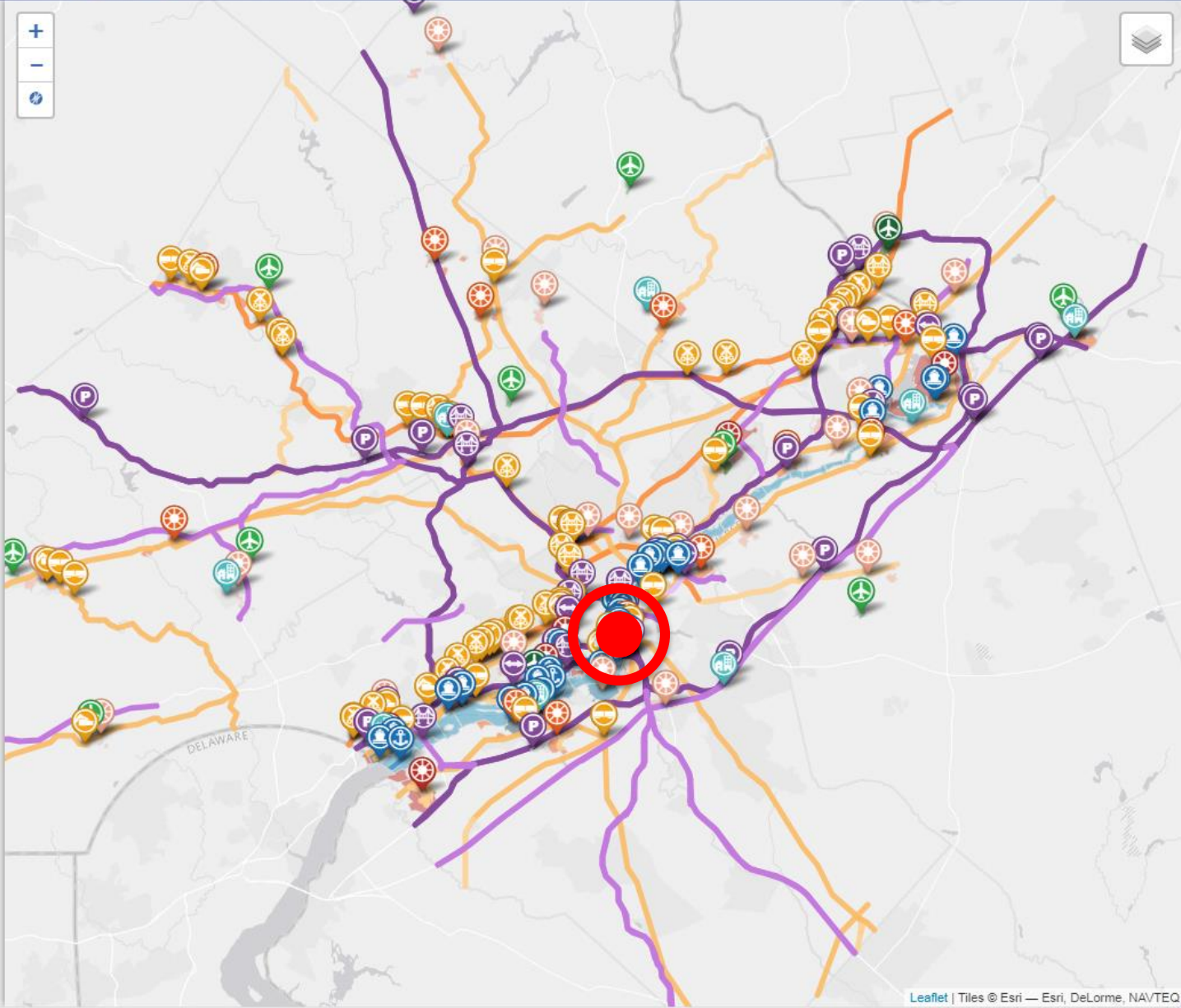
The region's extensive network includes hundreds of individual facilities that function together to drive the economy. Our map tool allows you to explore key details and facts about each of these facilities.

Browse the network map

- Trucking/highways
- Freight Rail
- Ports/waterways
- Airports
- Freight Centers
- Energy & Utilities
- Community



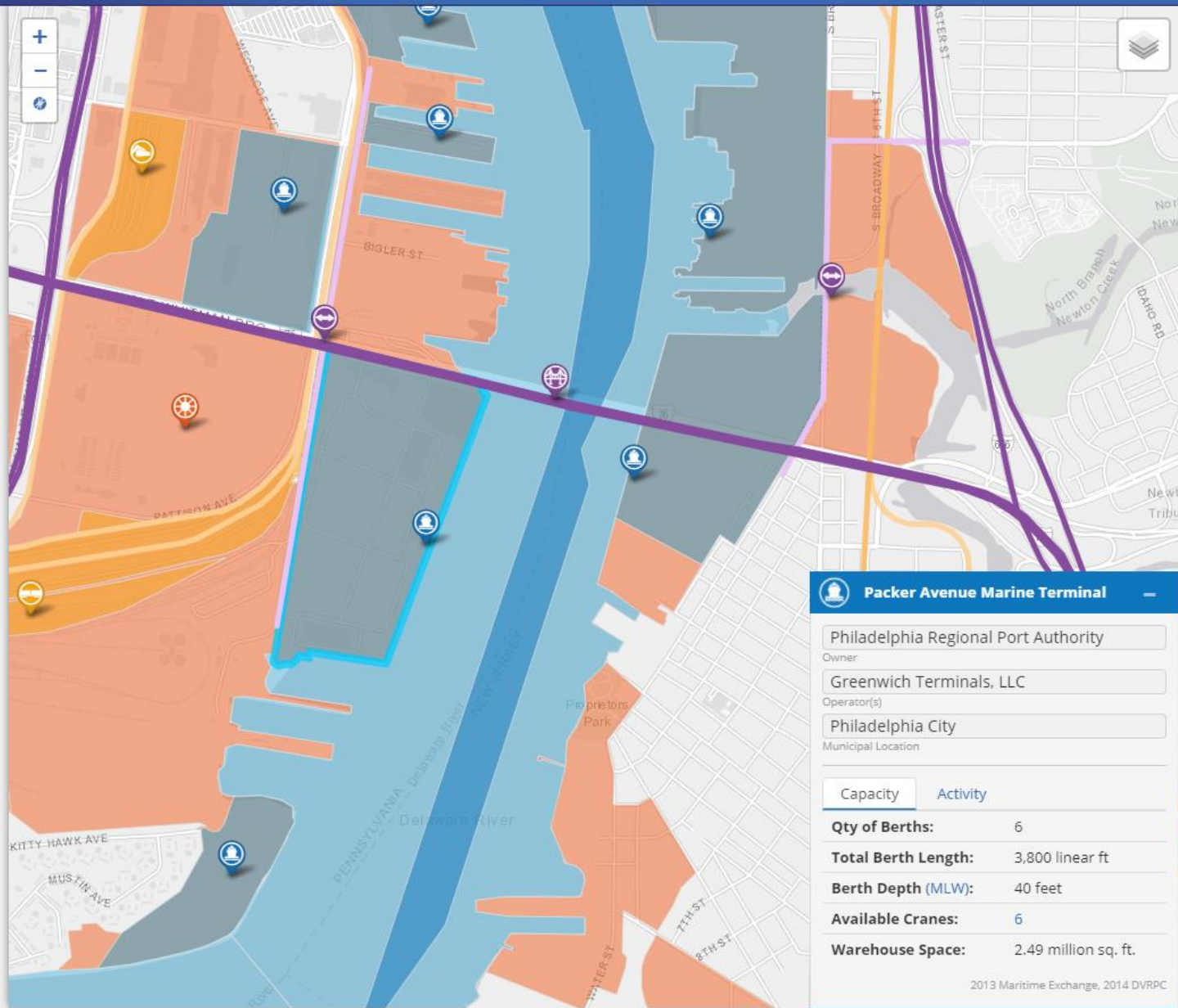
- Trucking/highways
- Freight Rail
- Ports/waterways
- Airports
- Freight Centers
- Energy & Utilities
- Community



Submit Feedback

Click feature to view details

- Trucking/highways
- Freight Rail
- Ports/waterways
- Airports
- Freight Centers
- Energy & Utilities
- Community



Packer Avenue Marine Terminal

Philadelphia Regional Port Authority
 Owner
 Greenwich Terminals, LLC
 Operator(s)
 Philadelphia City
 Municipal Location

Capacity	Activity
Qty of Berths:	6
Total Berth Length:	3,800 linear ft
Berth Depth (MLW):	40 feet
Available Cranes:	6
Warehouse Space:	2.49 million sq. ft.

2013 Maritime Exchange, 2014 DVRPC

Type: General Cargo Terminal

Freight Data Portal for the Delaware Valley

The Delaware Valley is a premier freight transportation gateway. It possesses one of the world's busiest freshwater ports; rail freight service from two large Class I railroads and 12 smaller short lines; an airport with expanding international cargo services; an excellent highway and connector network; and numerous rail and port intermodal terminals.

The performance of this extraordinary network helps promote and support a thriving economy. *PhillyFreightFinder* is a resource for exploring and tracking the Philadelphia-Camden-Trenton regional freight network.

Get started below

County Freight Profiles

The DVRPC region is comprised of nine counties, each with a unique freight profile of facilities, employment, and trade patterns. The County Profile Tool provides insights on these unique aspects.

Explore a county

Performance Indicators

A key to understanding freight in the Delaware Valley is evaluating the performance of the facilities that support freight in the region.

View Highway Performance

View Maritime Indicators

Explore Our Network

The region's extensive network includes hundreds of individual facilities that function together to drive the economy. Our map tool allows you to explore key details and facts about each of these facilities.

Browse the network map

Freight Data Portal for the Delaware Valley

The Delaware Valley is a premier freight transportation gateway. It possesses one of the world's busiest freshwater ports; rail freight service from two large Class I railroads and 12 smaller short lines; an airport with expanding international cargo services; an excellent highway and connector network; and numerous rail and port intermodal terminals.

The performance of this extraordinary network helps promote and support a thriving economy. *PhillyFreightFinder* is a resource for exploring and tracking the Philadelphia-Camden-Trenton regional freight network.

Get started below

County Freight Profiles

The DVRPC region is comprised of nine counties, each with a unique freight profile of facilities, employment, and trade patterns. The County Profile Tool provides insights on these unique aspects.

Explore County

Performance Indicators

A key to understanding freight in the Delaware Valley is evaluating the performance of the facilities that support freight in the region.

View Highway Performance

View Maritime Indicators

Explore Our Network

The region's extensive network includes hundreds of individual facilities that function together to drive the economy. Our map tool allows you to explore key details and facts about each of these facilities.

Browse the network map

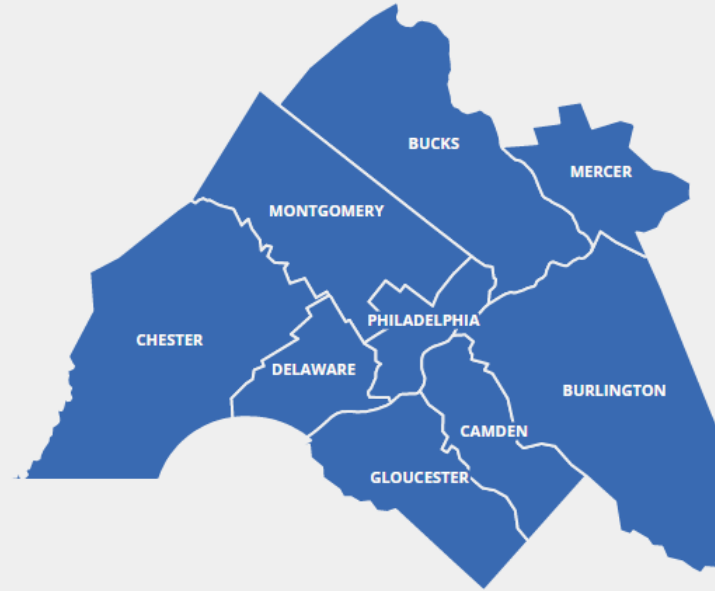
DVRPC Region | Overview

overview network trade patterns

The Delaware Valley region consists of nine counties: Bucks, Chester, Delaware, Montgomery and Philadelphia in Pennsylvania, and Burlington, Camden, Gloucester and Mercer in New Jersey.

The DVRPC region contains an impressive freight transportation network consisting of highways, rail lines, ports, airports, and pipelines. These key linkages unite an expansive list of facilities including warehouses, manufacturing sites, rail yards, and truck stops.

Strategically positioned in the middle of the densest population center in the United States; over 100 million people live within a 500-mile radius of Philadelphia, representing a vast consumer base and making the region ideally situated as a manufacturing and distribution hub.



Explore freight facilities and activity by county

(select a county of interest)

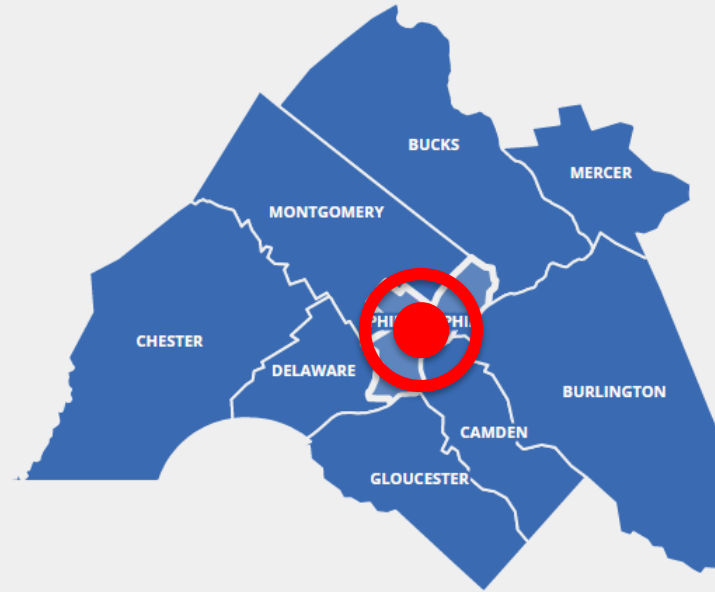
DVRPC Region | Overview

overview network trade patterns

The Delaware Valley region consists of nine counties: Bucks, Chester, Delaware, Montgomery and Philadelphia in Pennsylvania, and Burlington, Camden, Gloucester and Mercer in New Jersey.

The DVRPC region contains an impressive freight transportation network consisting of highways, rail lines, ports, airports, and pipelines. These key linkages unite an expansive list of facilities including warehouses, manufacturing sites, rail yards, and truck stops.

Strategically positioned in the middle of the densest population center in the United States; over 100 million people live within a 500-mile radius of Philadelphia, representing a vast consumer base and making the region ideally situated as a manufacturing and distribution hub.



Explore freight facilities and activity by county

(select a county of interest)

Philadelphia County | Network

overview

network

trade patterns

Like powerful Internet networking tools, Philadelphia, Pennsylvania's freight system affords rapid, productive, and global connections. Once known as the *Workshop of the World*, Philadelphia now serves as the calling card of the Delaware Valley region's impressive freight assets. For even the casual observer, the City's prominence in international commerce is abundantly evident: mammoth container cranes, multi-cultural company logos, and non-stop daily pick-up and delivery patterns dot the landscape.



A Ship being unloaded at Packer Avenue Marine Terminal

Freight Network Statistics



HIGHWAY
STATISTICS

4
NHS
CONNECTORS

39
MILES
INTERSTATE
ROUTES

26
INTERSTATE
HIGHWAY
INTERCHANGES

91
MILES
NATIONAL
HIGHWAY

0
TRUCK STOPS
AND REST AREAS



FREIGHT RAIL
STATISTICS

105
MILES
FREIGHT
TRACKAGE

11
YARDS AND
INTERMODAL
TERMINALS



MARITIME
STATISTICS

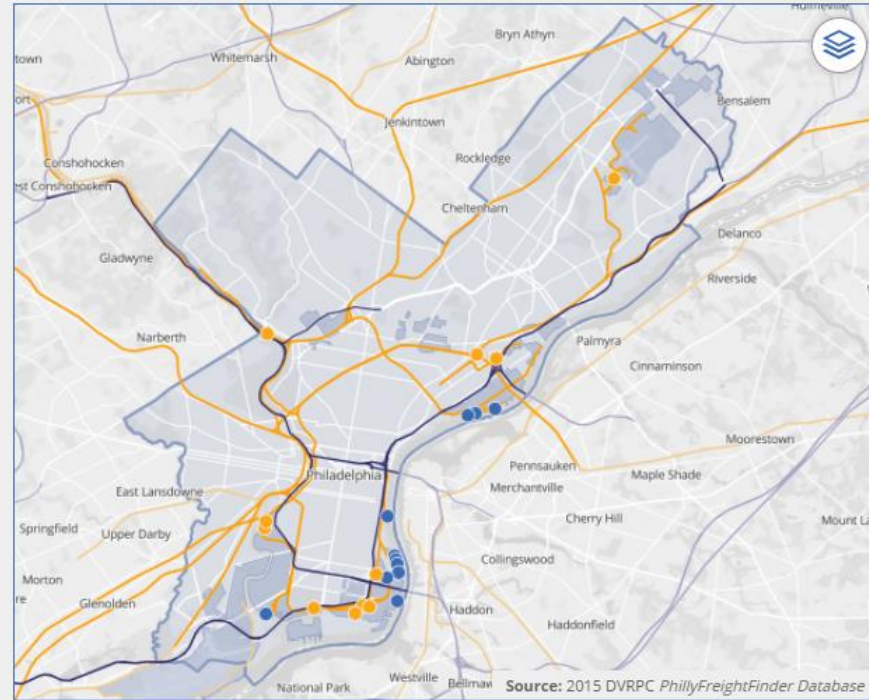
10
PORT
TERMINALS

734
ANNUAL
SHIP CALLS



8
UNIQUE
FREIGHT
CORPORATIONS

37.3 k
EMPLOYMENT
IN FREIGHT



Philadelphia County | Network

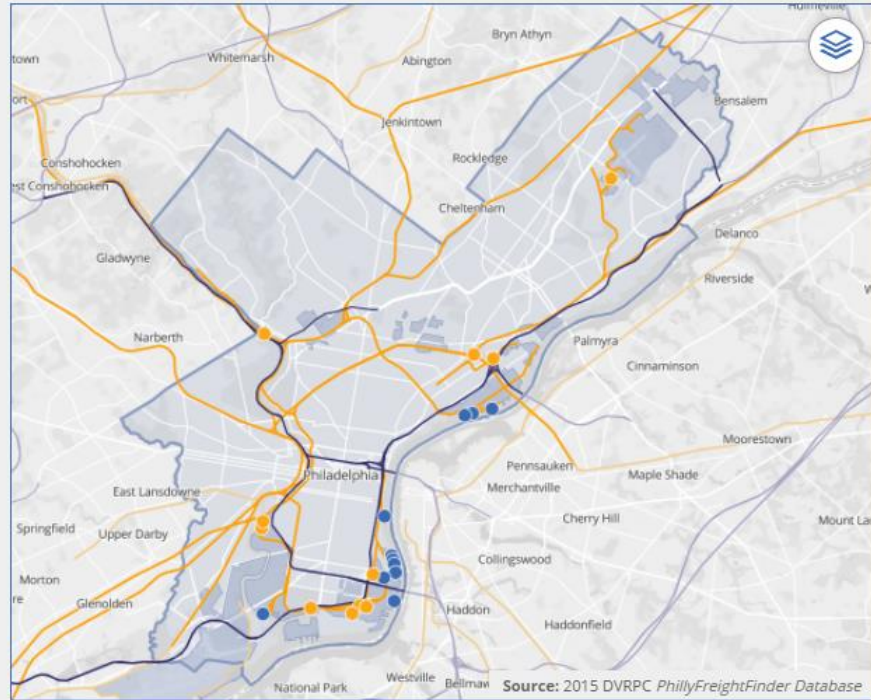
[overview](#)[network](#)[trade patterns](#)

Like powerful Internet networking tools, Philadelphia, Pennsylvania's freight system affords rapid, productive, and global connections. Once known as the *Workshop of the World*, Philadelphia now serves as the calling card of the Delaware Valley region's impressive freight assets. For even the casual observer, the City's prominence in international commerce is abundantly evident: mammoth container cranes, multi-cultural company logos, and non-stop daily pick-up and delivery patterns dot the landscape.



A Ship being unloaded at Packer Avenue Marine Terminal

Freight Network Statistics

**HIGHWAY STATISTICS****4**
NHS CONNECTORS**39**
MILES INTERSTATE ROUTES**26**
INTERSTATE HIGHWAY INTERCHANGES**91**
MILES NATIONAL HIGHWAY**0**
TRUCK STOPS AND REST AREAS**FREIGHT RAIL STATISTICS****105**
MILES FREIGHT TRACKAGE**11**
YARDS AND INTERMODAL TERMINALS**MARITIME STATISTICS****10**
PORT TERMINALS**734**
ANNUAL SHIP CALLS**8**
UNIQUE FREIGHT**37.3 k**
EMPLOYMENT

Philadelphia County | Domestic Trade Patterns

overview network trade patterns

Top Trading Partners

Southern New Jersey	4,176.2 ktons
New York Metro Area	3,244.9 ktons
Harrisburg, PA	2,759.6 ktons
Delaware County, PA	1,195.9 ktons
Gloucester County, NJ	1,151.4 ktons
Washington DC Metro Area	903.2 ktons
Chicago, IL	719.0 ktons
Pittsburgh, PA	688.2 ktons
Chester County, PA	537.0 ktons
Bucks County, PA	518.4 ktons

Measured by:

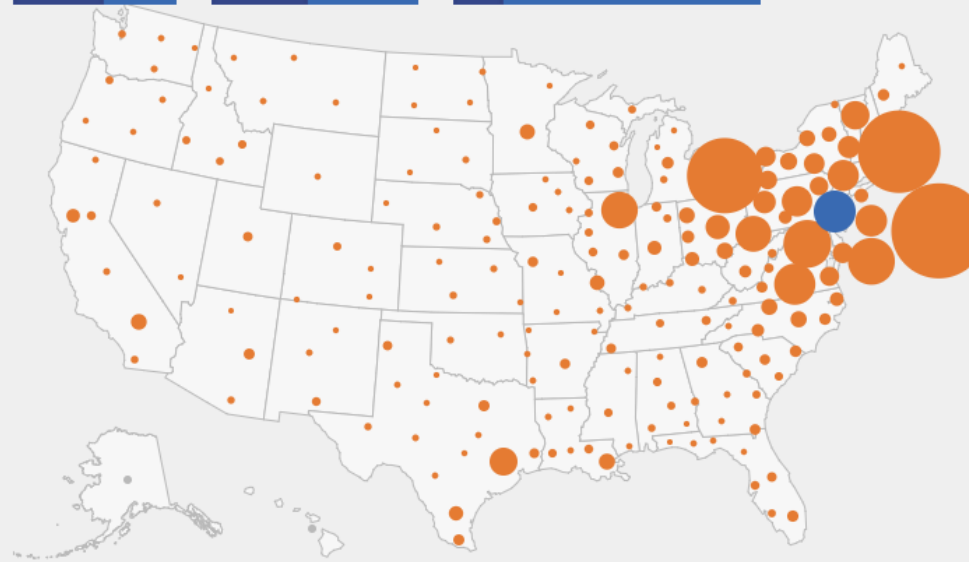
Volume Value

Shipment direction:

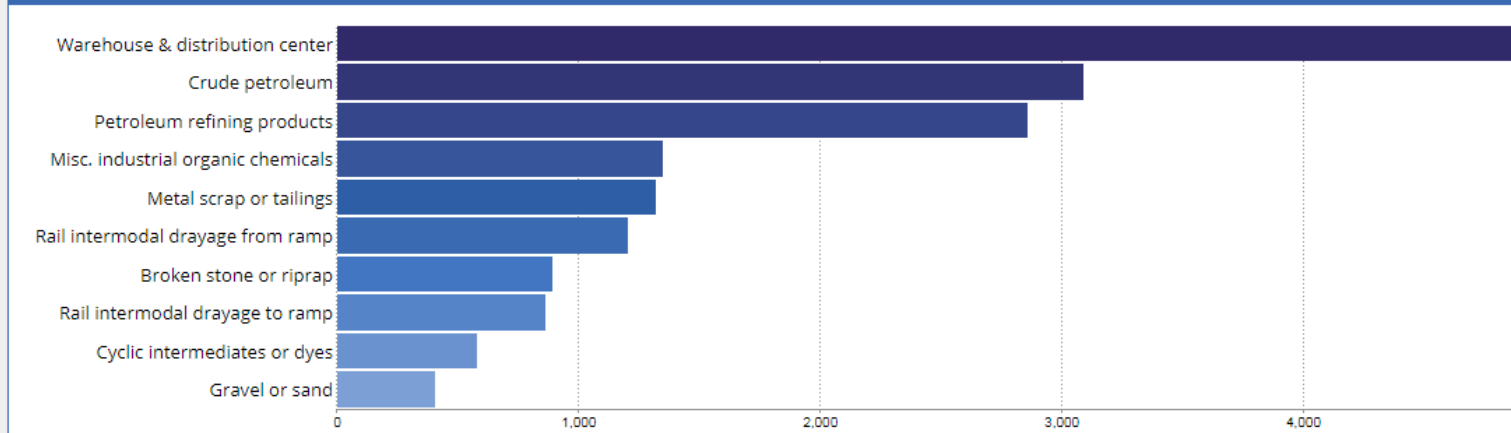
Inbound Outbound

Mode of transportation:

All Truck Rail Water Air



Top Inbound - Commodities by Volume -



Philadelphia County | Domestic Trade Patterns

overview

network

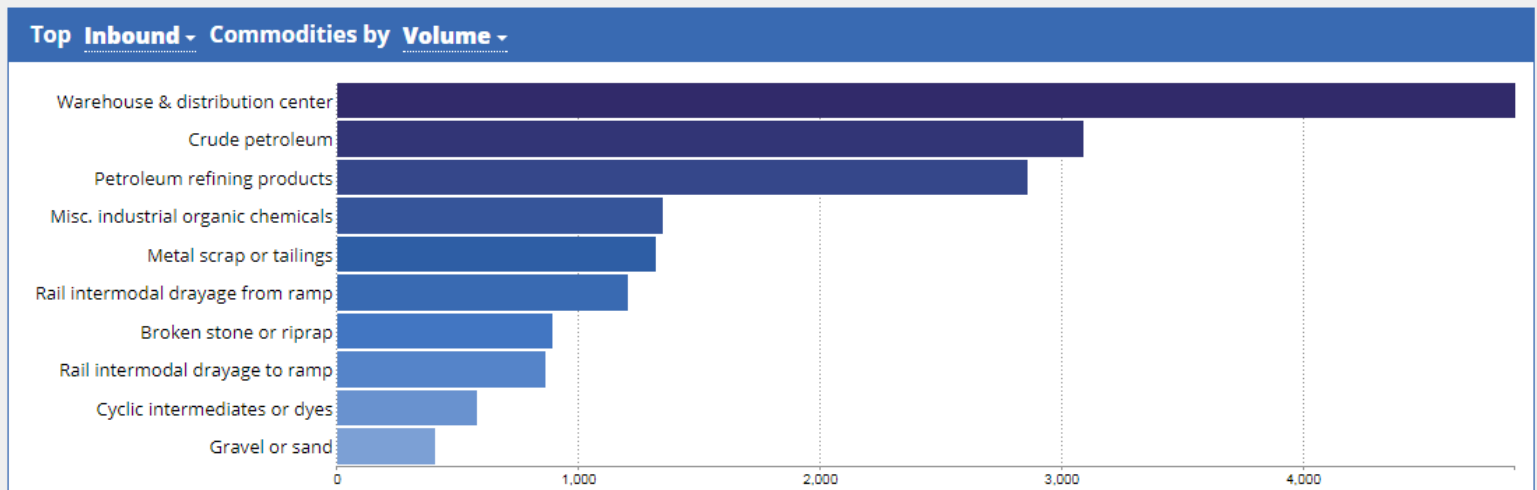
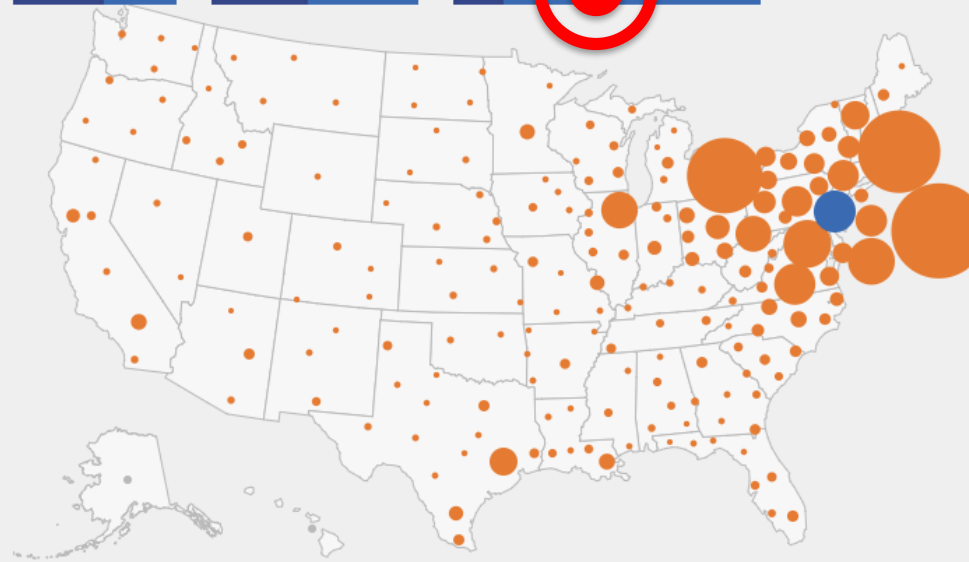
trade patterns

Top Trading Partners	
Southern New Jersey	4,176.2 ktons
New York Metro Area	3,244.9 ktons
Harrisburg, PA	2,759.6 ktons
Delaware County, PA	1,195.9 ktons
Gloucester County, NJ	1,151.4 ktons
Washington DC Metro Area	903.2 ktons
Chicago, IL	719.0 ktons
Pittsburgh, PA	688.2 ktons
Chester County, PA	537.0 ktons
Bucks County, PA	518.4 ktons

Measured by: **Volume** Value

Shipment direction: **Inbound** Outbound

Mode of transportation: **All** Truck **Water** Air



Philadelphia County | Domestic Trade Patterns

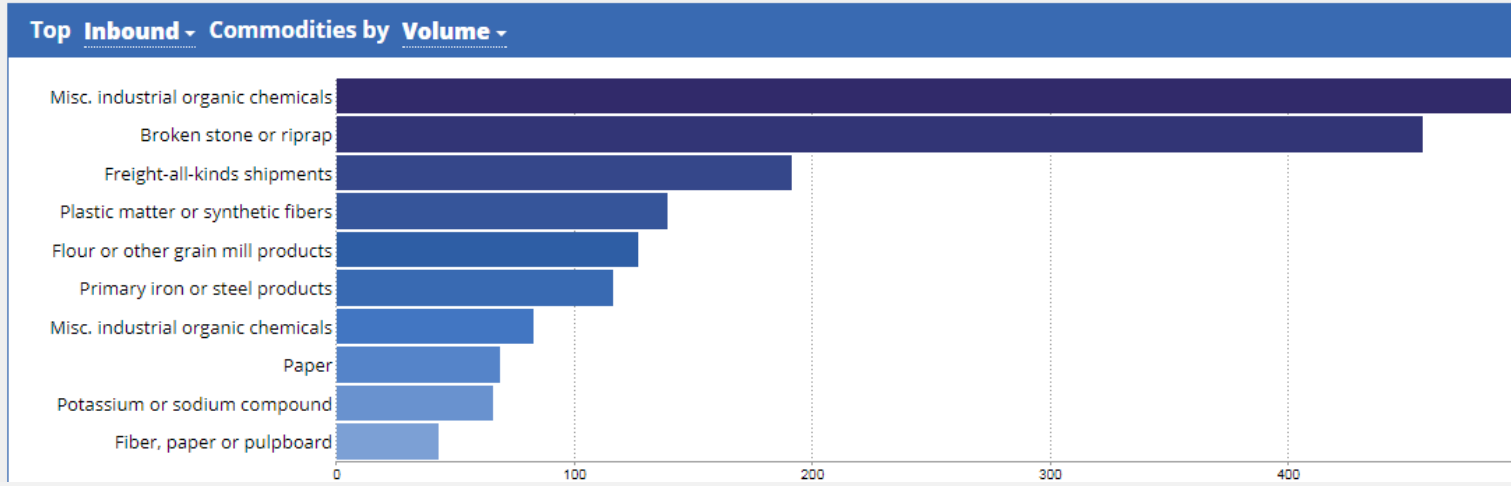
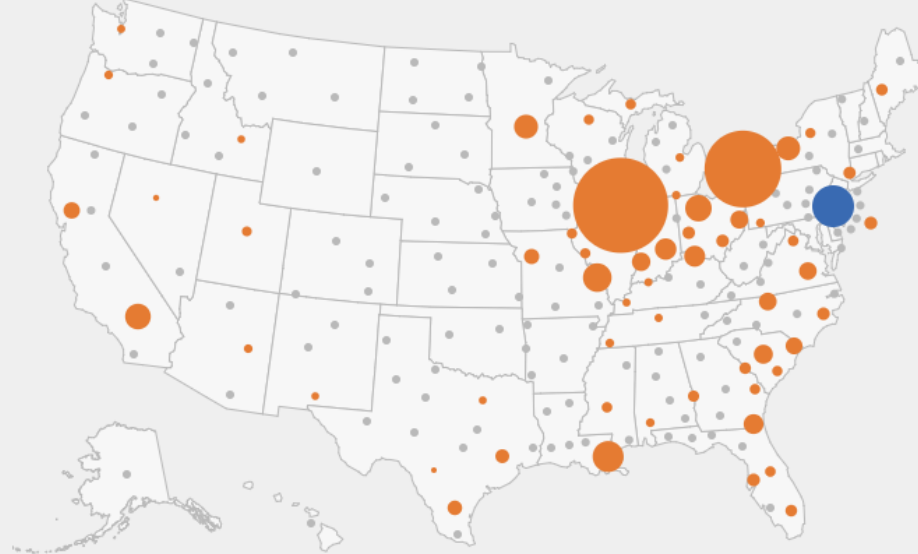
overview network trade patterns

Top Trading Partners	
Chicago, IL	664.3 ktons
Harrisburg, PA	456.2 ktons
New Orleans, LA	85.8 ktons
St. Louis, MO	73.4 ktons
Toledo-Fremont, OH	62.7 ktons
Los Angeles-Long Beach, CA	58.9 ktons
Minneapolis, MN	51.0 ktons
Buffalo, NY	50.7 ktons
Indianapolis, IN	40.7 ktons
Cincinnati, OH	39.0 ktons

Measured by: **Volume** Value

Shipment direction: **Inbound** Outbound

Mode of transportation: **All** Truck Rail Water Air





Philadelphia County | Domestic Trade Patterns

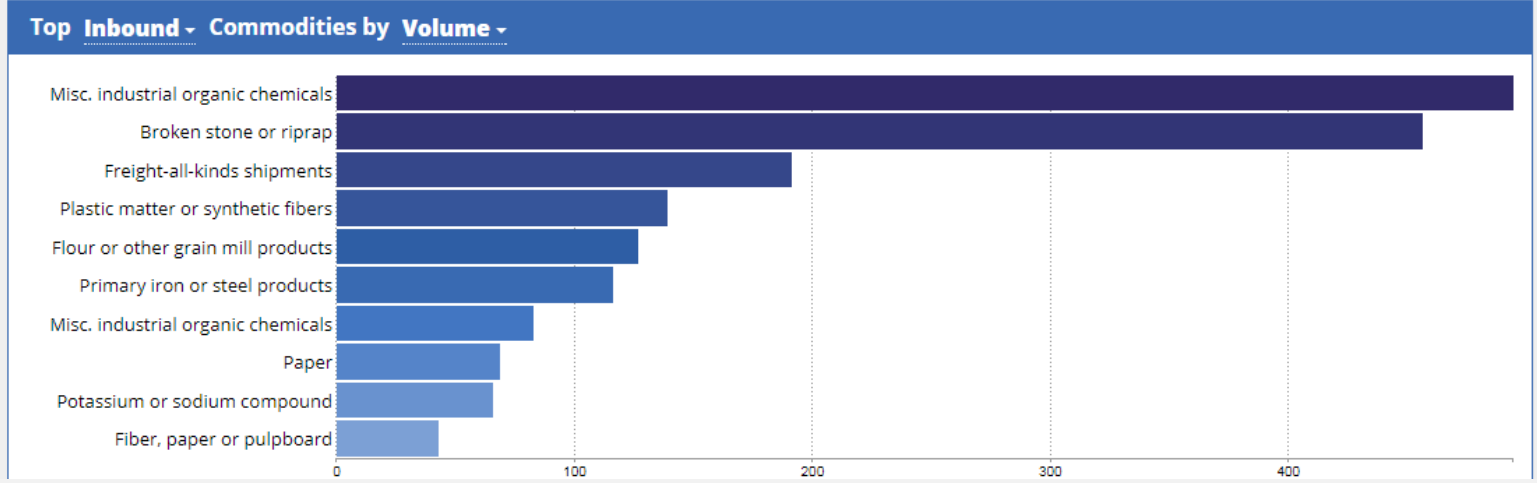
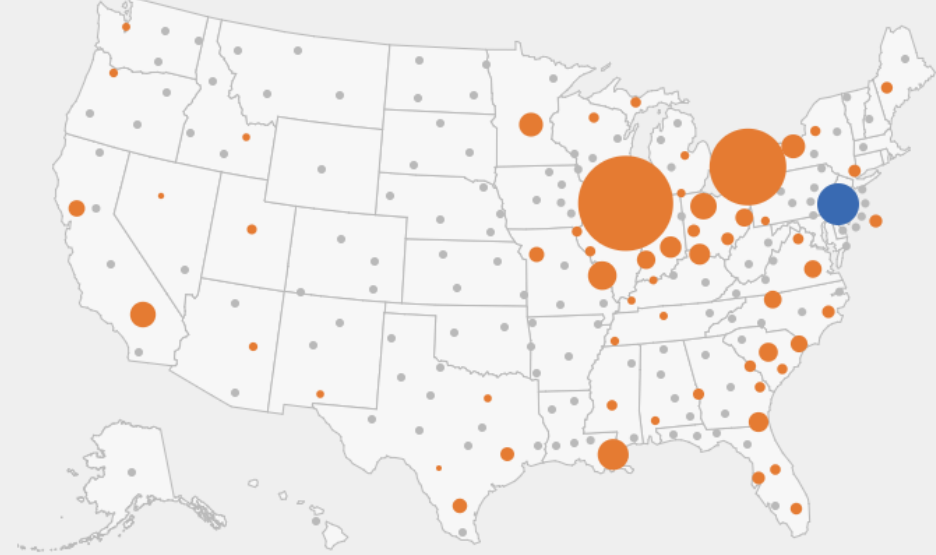
overview network trade patterns

Top Trading Partners	
Chicago, IL	664.3 ktons
Harrisburg, PA	456.2 ktons
New Orleans, LA	85.8 ktons
St. Louis, MO	73.4 ktons
Toledo-Fremont, OH	62.7 ktons
Los Angeles-Long Beach, CA	58.9 ktons
Minneapolis, MN	51.0 ktons
Buffalo, NY	50.7 ktons
Indianapolis, IN	40.7 ktons
Cincinnati, OH	39.0 ktons

Measured by: **Volume** Value

Shipment direction: **Inbound** Outbound

Mode of transportation: **All** Truck Rail Water Air



Freight Data Portal for the Delaware Valley

The Delaware Valley is a premier freight transportation gateway. It possesses one of the world's busiest freshwater ports; rail freight service from two large Class I railroads and 12 smaller short lines; an airport with expanding international cargo services; an excellent highway and connector network; and numerous rail and port intermodal terminals.

The performance of this extraordinary network helps promote and support a thriving economy. *PhillyFreightFinder* is a resource for exploring and tracking the Philadelphia-Camden-Trenton regional freight network.

Get started below

County Freight Profiles

The DVRPC region is comprised of nine counties, each with a unique freight profile of facilities, employment, and trade patterns. The County Profile Tool provides insights on these unique aspects.

Explore a county

Performance Indicators

A key to understanding freight in the Delaware Valley is evaluating the performance of the facilities that support freight in the region.

View Highway Performance

View Maritime Indicators

Explore Our Network

The region's extensive network includes hundreds of individual facilities that function together to drive the economy. Our map tool allows you to explore key details and facts about each of these facilities.

Browse the network map

Freight Data Portal for the Delaware Valley

The Delaware Valley is a premier freight transportation gateway. It possesses one of the world's busiest freshwater ports; rail freight service from two large Class I railroads and 12 smaller short lines; an airport with expanding international cargo services; an excellent highway and connector network; and numerous rail and port intermodal terminals.

The performance of this extraordinary network helps promote and support a thriving economy. *PhillyFreightFinder* is a resource for exploring and tracking the Philadelphia-Camden-Trenton regional freight network.

Get started below

County Freight Profiles

The DVRPC region is comprised of nine counties, each with a unique freight profile of facilities, employment, and trade patterns. The County Profile Tool provides insights on these unique aspects.

Explore a county

Performance Indicators

A key to understanding freight in the Delaware Valley is evaluating the performance of the facilities that support freight in the region.

View Highway Performance

View Maritime Indicators

Explore Our Network

The region's extensive network includes hundreds of individual facilities that function together to drive the economy. Our map tool allows you to explore key details and facts about each of these facilities.

Browse the network map

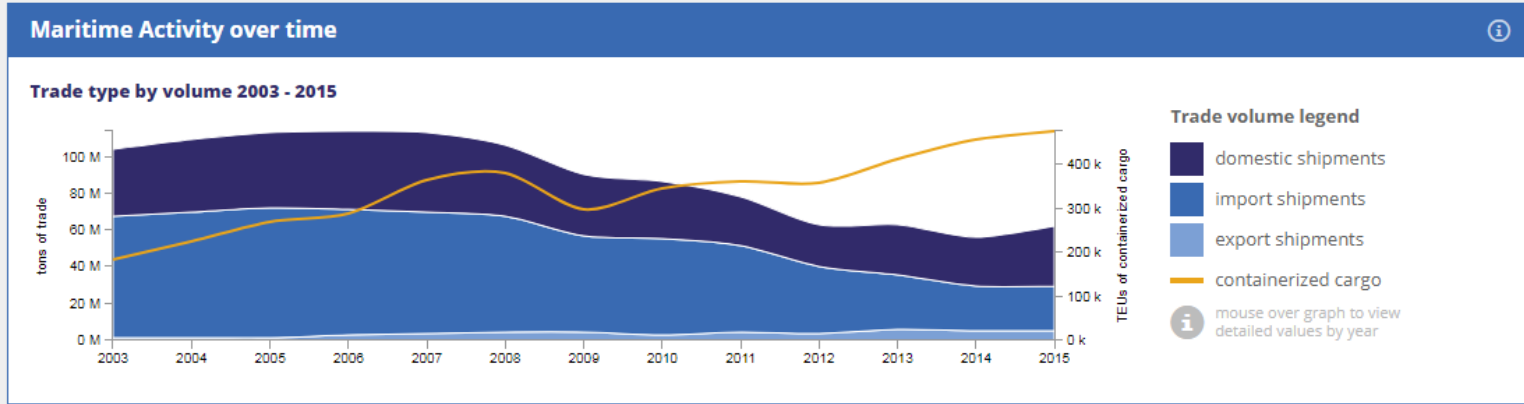
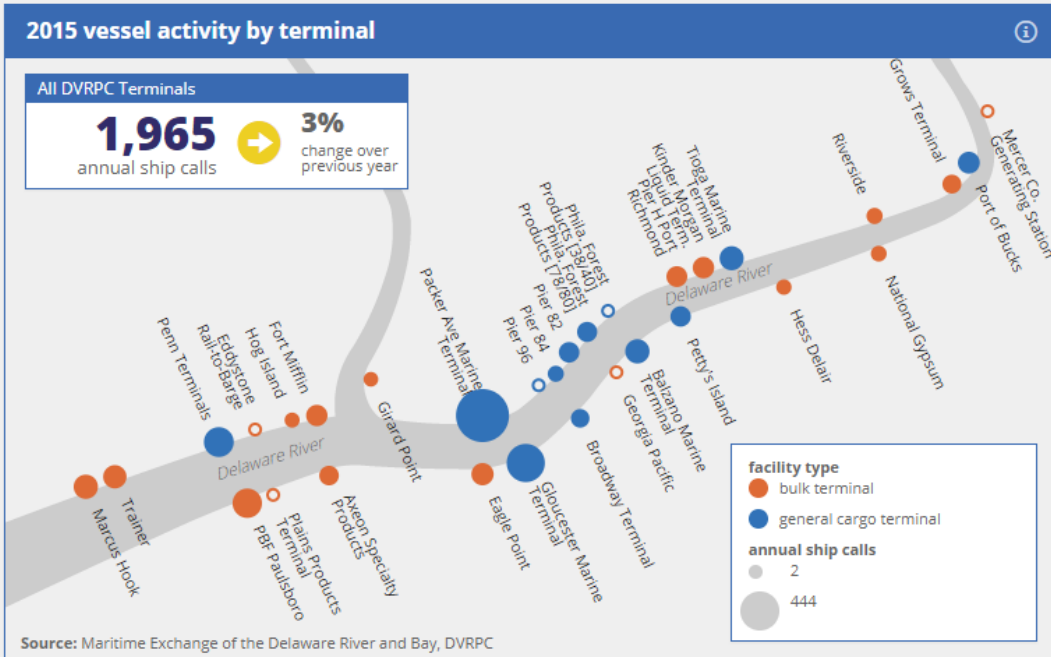
Maritime Indicators

select a year: 2015



2015 Annual Indicators

- 4** regional port rank by volume
- 62.2 M** total trade (tons)
10.0% regional change vs. -2.3% national change
- \$24 B** total foreign trade
-6.1% regional change vs. -10.8% national change
- 5.4 M** maritime exports (tons)
1.2% regional change vs. -15.1% national change
- 18%** export share of foreign trade by volume



Maritime Indicators

select a year:

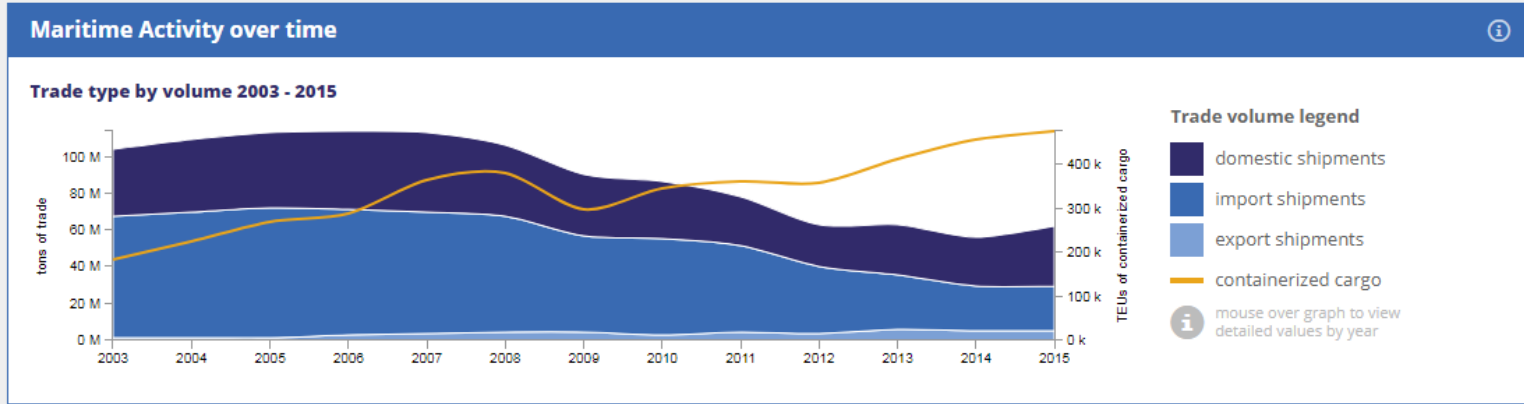
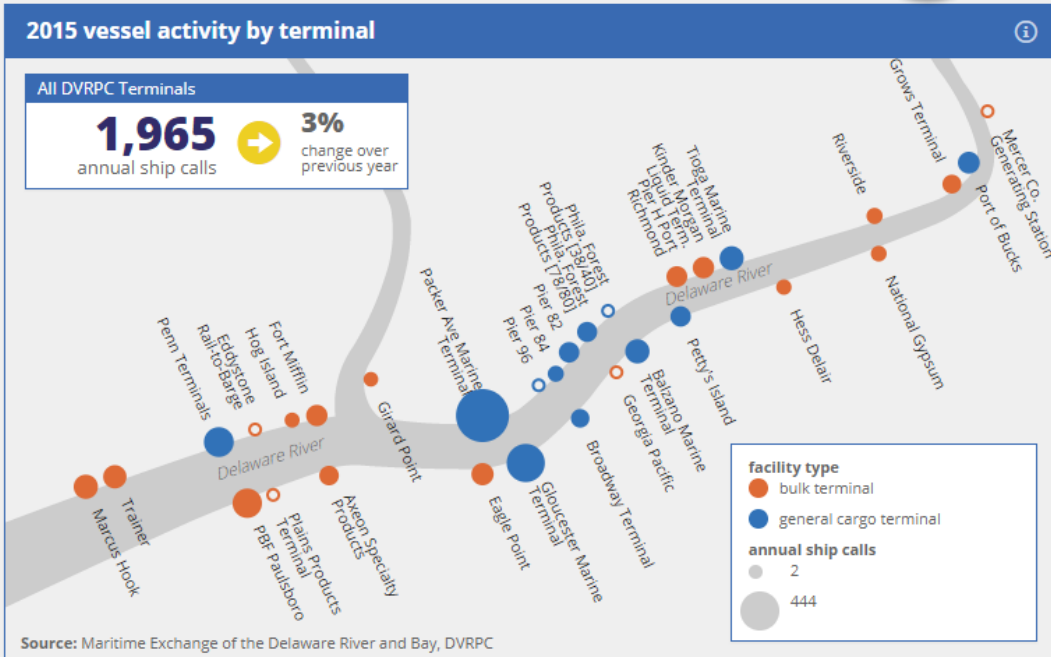
2015



2015 Annual Indicators

- 4** regional port rank by volume
- 62.2 M** total trade (tons)
10.0% regional change vs. -2.3% national change
- \$24 B** total foreign trade
-6.1% regional change vs. -10.8% national change
- 5.4 M** maritime exports (tons)
1.2% regional change vs. -15.1% national change

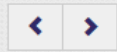
18% export share of foreign trade by volume



Maritime Indicators

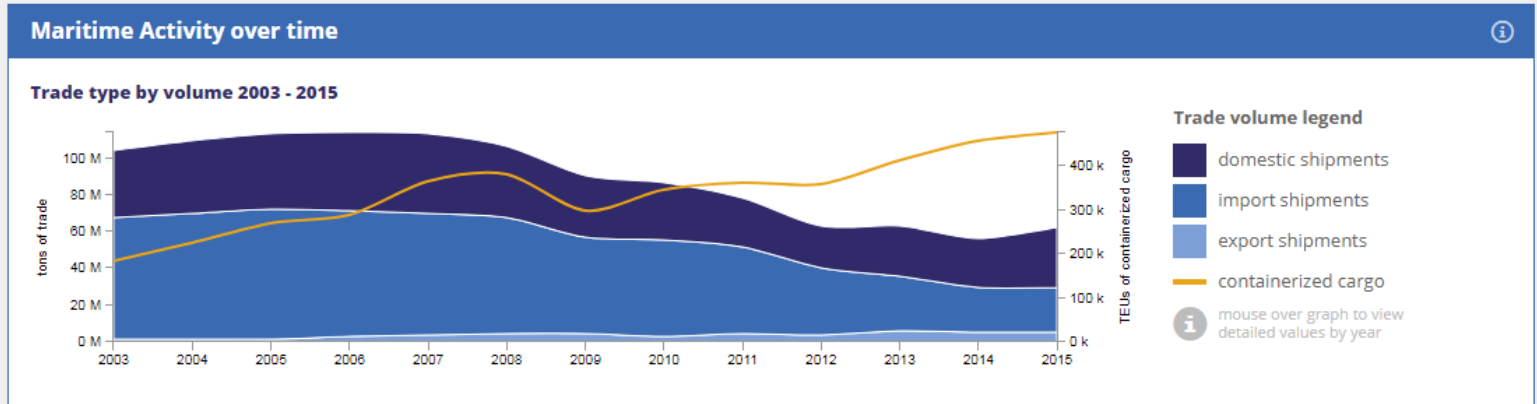
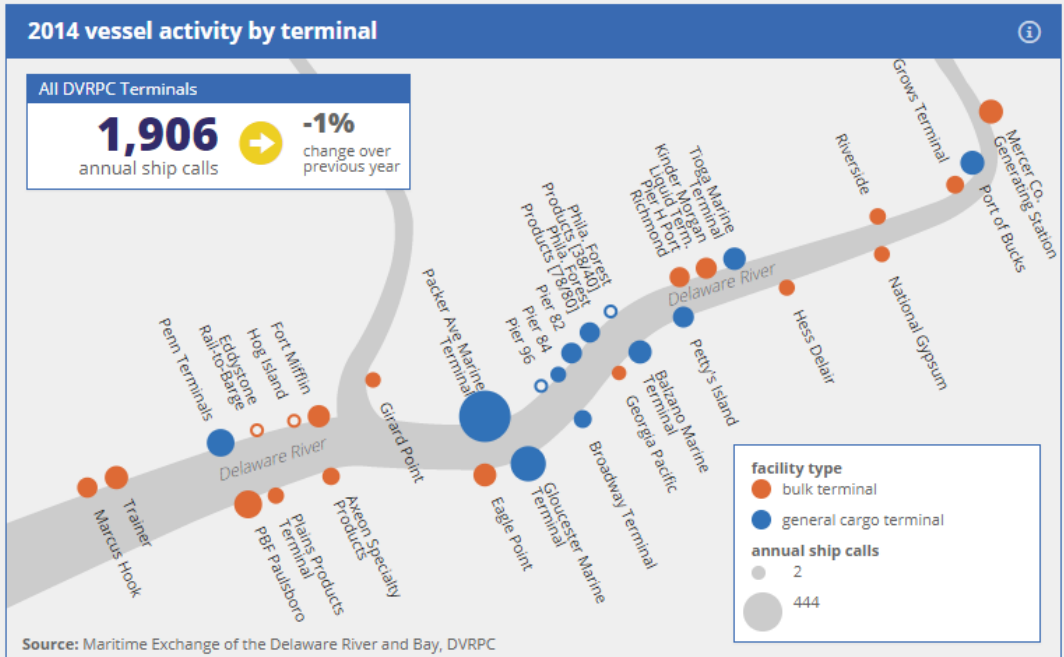
select a year:

2014



2014 Annual Indicators

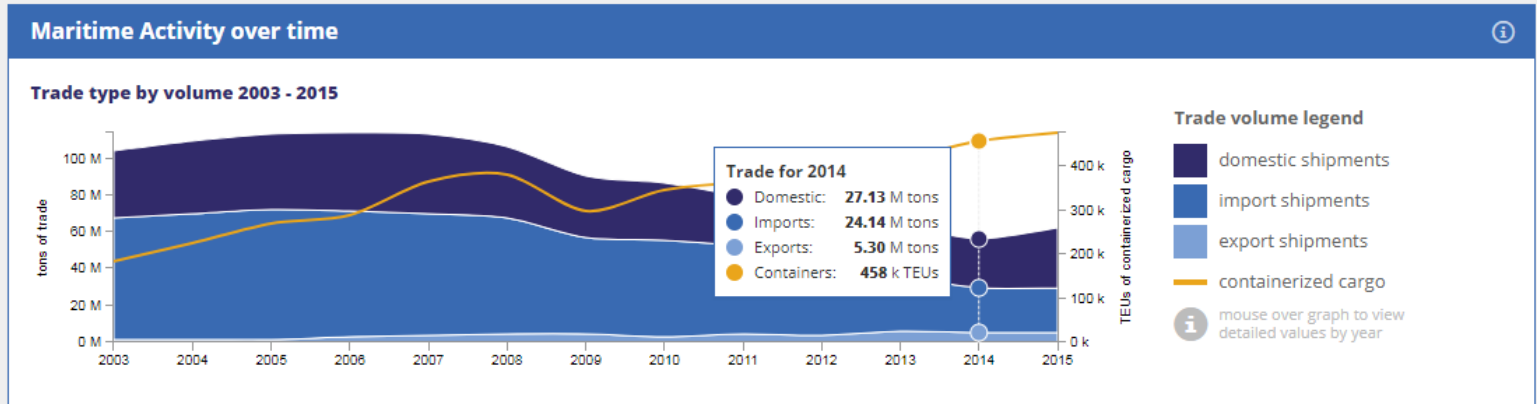
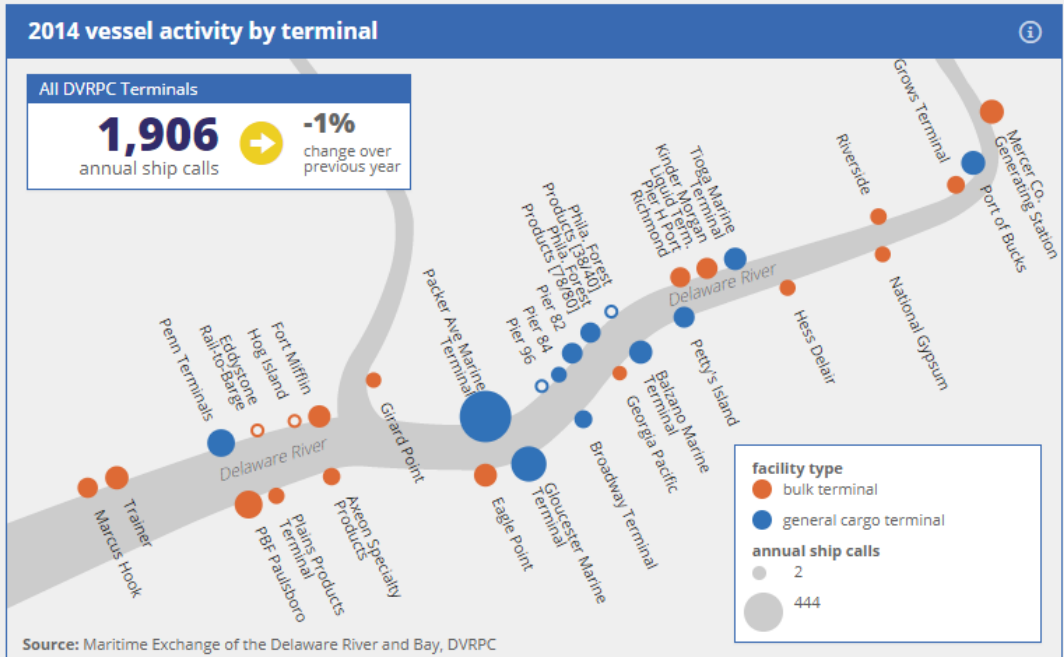
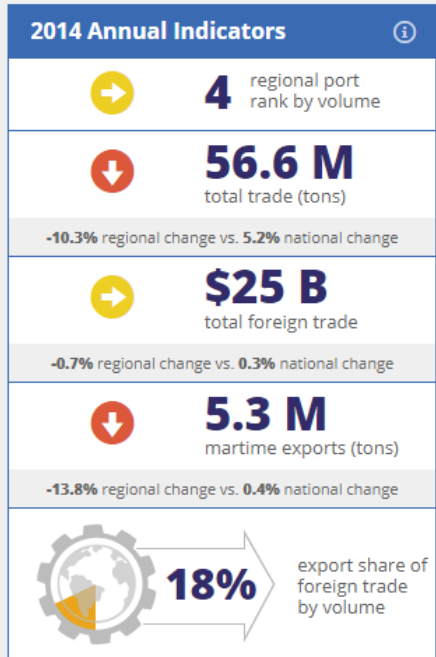
- 4** regional port rank by volume
- 56.6 M** total trade (tons)
 - 10.3% regional change vs. 5.2% national change
- \$25 B** total foreign trade
 - 0.7% regional change vs. 0.3% national change
- 5.3 M** maritime exports (tons)
 - 13.8% regional change vs. 0.4% national change
- 18%** export share of foreign trade by volume



Maritime Indicators

select a year:

2014



Freight Data Portal for the Delaware Valley

The Delaware Valley is a premier freight transportation gateway. It possesses one of the world's busiest freshwater ports; rail freight service from two large Class I railroads and 12 smaller short lines; an airport with expanding international cargo services; an excellent highway and connector network; and numerous rail and port intermodal terminals.

The performance of this extraordinary network helps promote and support a thriving economy. *PhillyFreightFinder* is a resource for exploring and tracking the Philadelphia-Camden-Trenton regional freight network.

Get started below

County Freight Profiles

The DVRPC region is comprised of nine counties, each with a unique freight profile of facilities, employment, and trade patterns. The County Profile Tool provides insights on these unique aspects.

Explore a county

Performance Indicators

A key to understanding freight in the Delaware Valley is evaluating the performance of the facilities that support freight in the region.

View Highway Performance

View Maritime Indicators

Explore Our Network

The region's extensive network includes hundreds of individual facilities that function together to drive the economy. Our map tool allows you to explore key details and facts about each of these facilities.

Browse the network map

Freight Data Portal for the Delaware Valley

The Delaware Valley is a premier freight transportation gateway. It possesses one of the world's busiest freshwater ports; rail freight service from two large Class I railroads and 12 smaller short lines; an airport with expanding international cargo services; an excellent highway and connector network; and numerous rail and port intermodal terminals.

The performance of this extraordinary network helps promote and support a thriving economy. *PhillyFreightFinder* is a resource for exploring and tracking the Philadelphia-Camden-Trenton regional freight network.

Get started below

County Freight Profiles

The DVRPC region is comprised of nine counties, each with a unique freight profile of facilities, employment, and trade patterns. The County Profile Tool provides insights on these unique aspects.

Explore a county

Performance Indicators

A key to understanding freight in the Delaware Valley is evaluating the performance of the facilities that support freight in the region.

View Highway Performance

View Maritime Indicators

Explore Our Network

The region's extensive network includes hundreds of individual facilities that function together to drive the economy. Our map tool allows you to explore key details and facts about each of these facilities.

Browse the network map

Highway Performance | Truck Travel Time Index (12 AM - 5 AM)



Select performance measure:

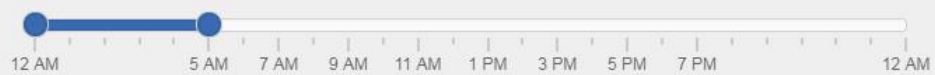
Travel Time Index Average Speed ⓘ

Data legend:

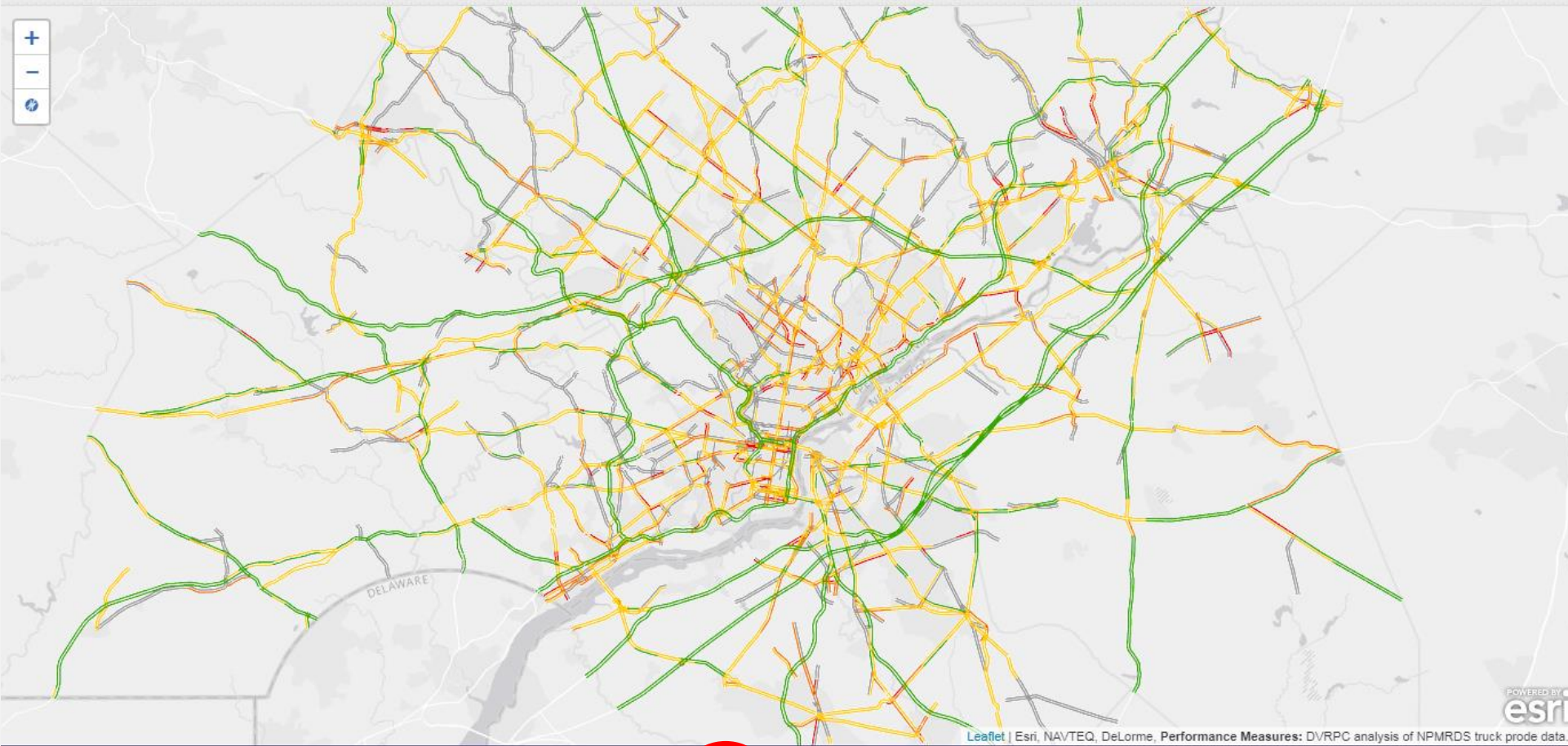


Select time period:

▶ Play ◀ ▶



Highway Performance | Truck Travel Time Index (12 AM - 5 AM)



Select performance measure:

Travel Time Index Average Speed ⓘ

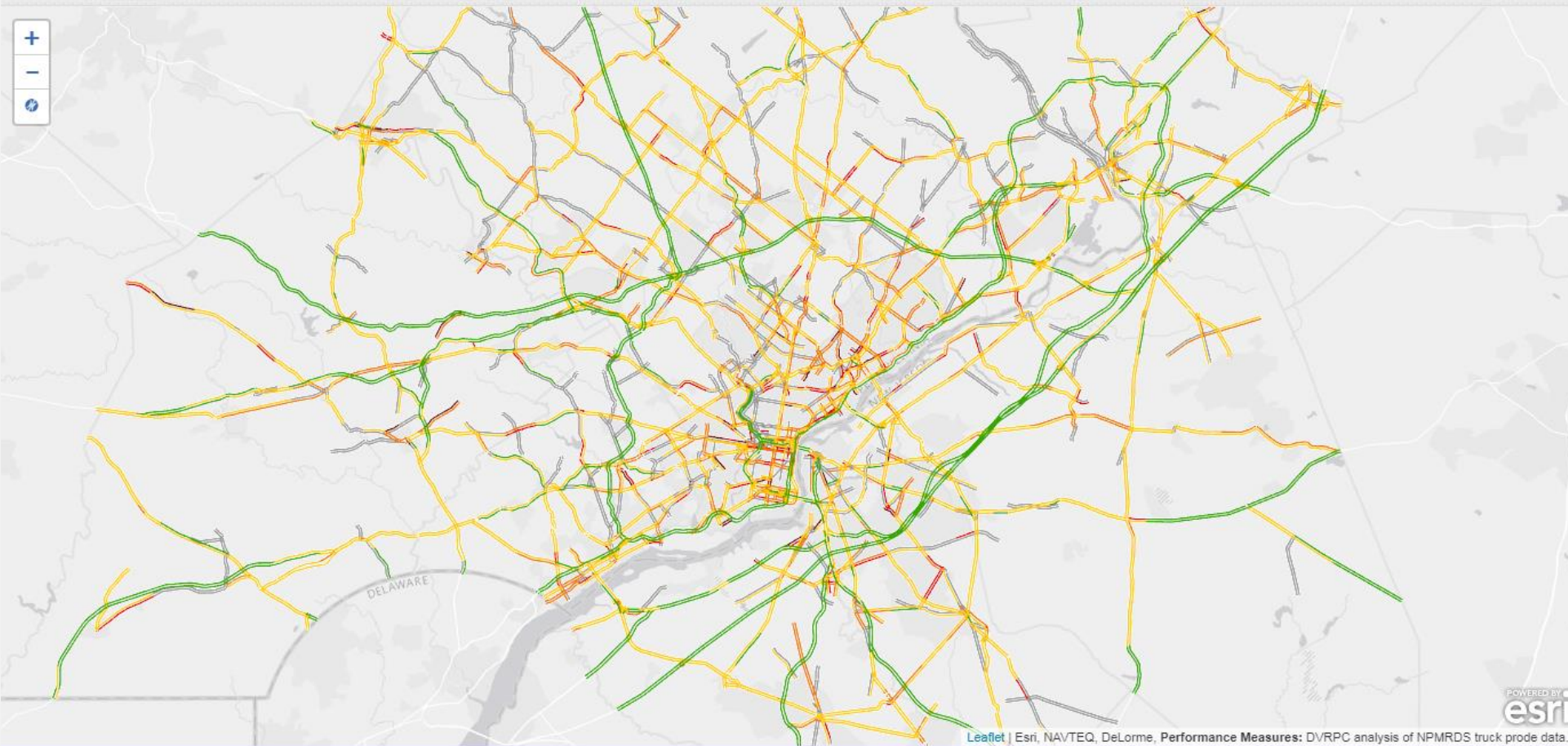
Data legend:



Select time period:

12 AM 5 AM 7 AM 9 AM 11 AM 1 PM 3 PM 5 PM 7 PM 12 AM

Highway Performance | Truck Travel Time Index (5 AM - 7 AM)



Select performance measure:

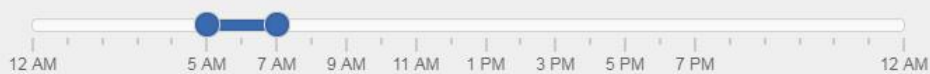
Travel Time Index Average Speed ⓘ

Data legend:

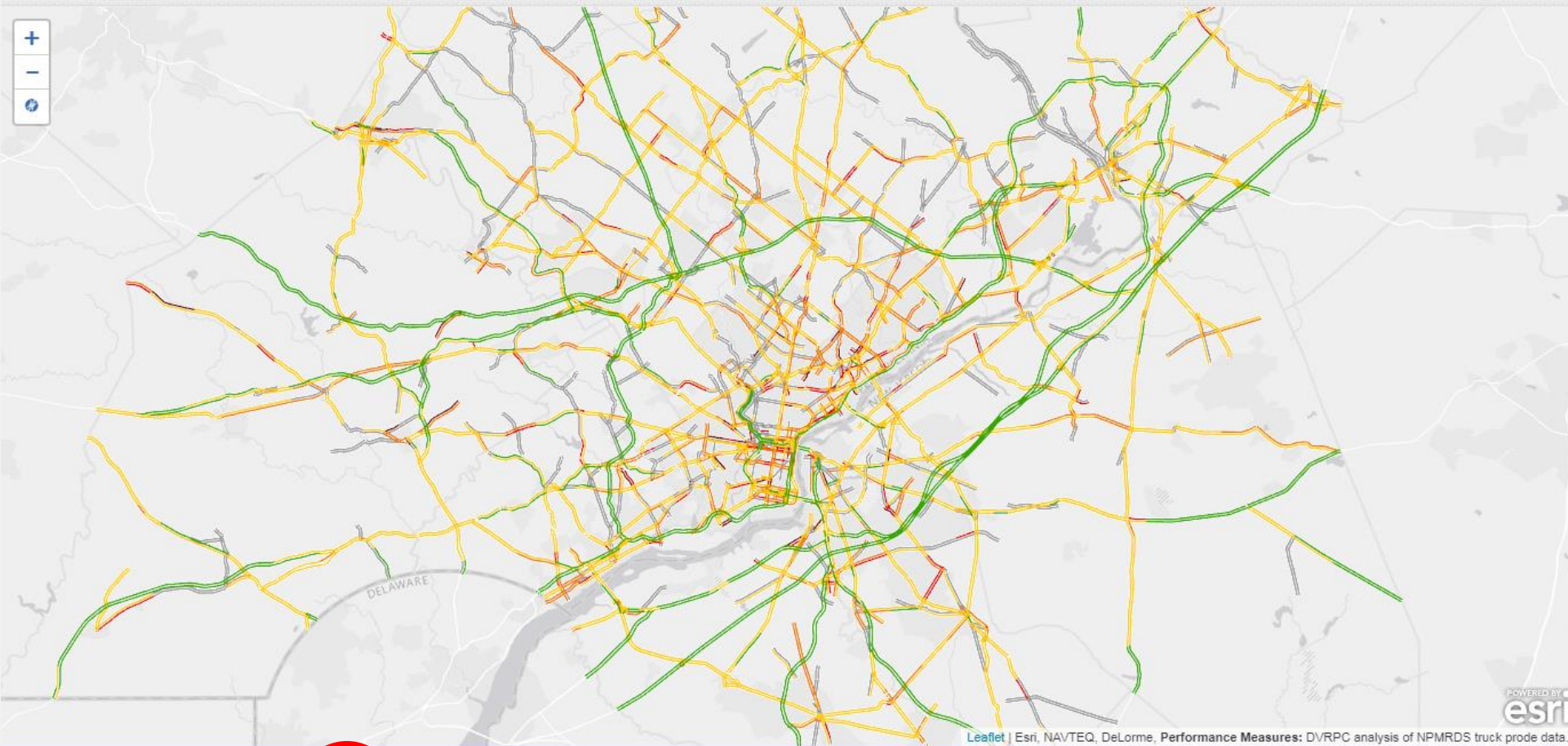


Select time period:

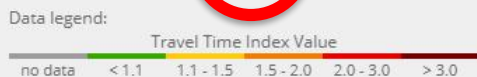
Pause < >



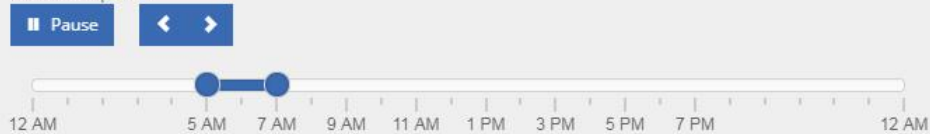
Highway Performance | Truck Travel Time Index (5 AM - 7 AM)



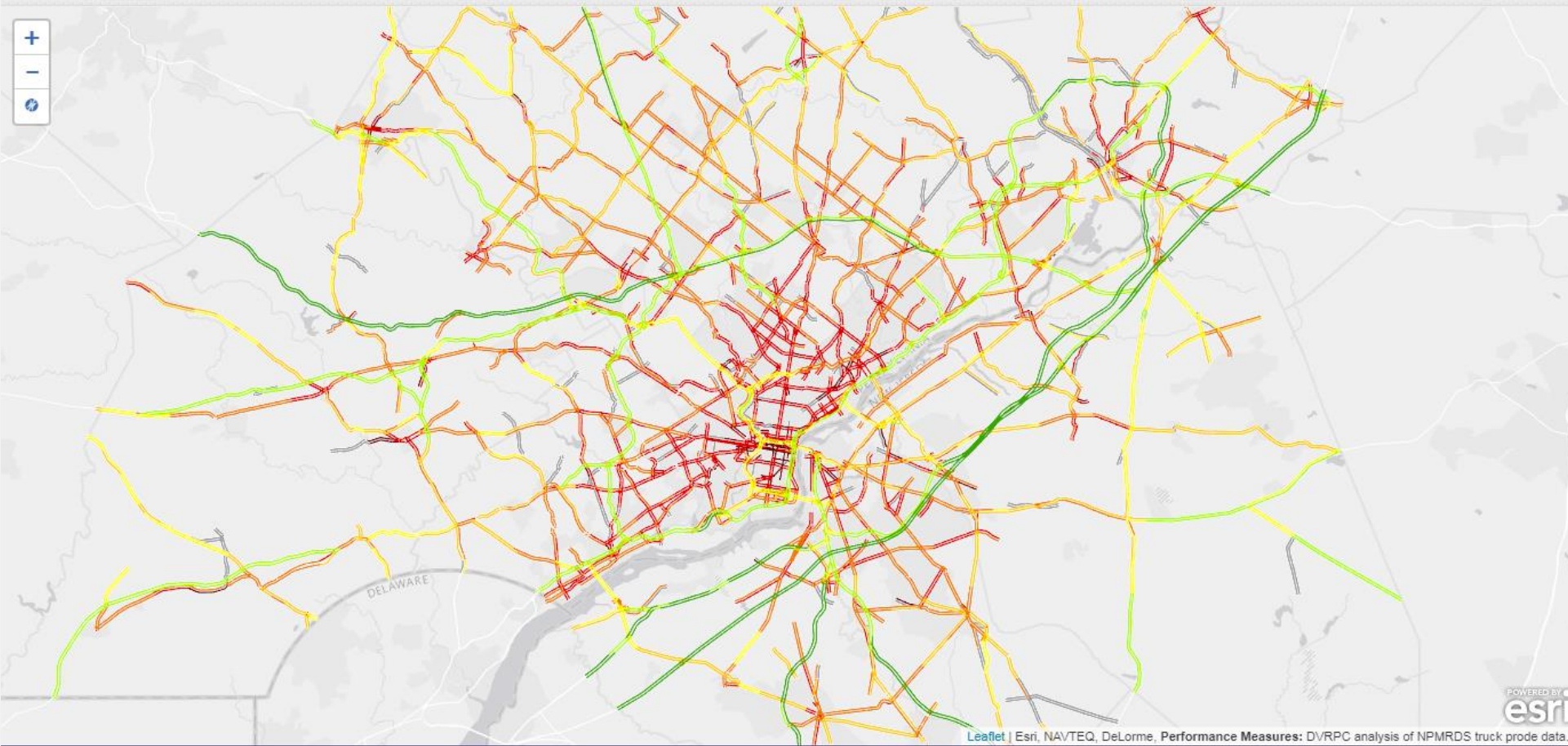
Select performance measure:
Travel Time Index **Travel Time Index** ⓘ



Select time period:

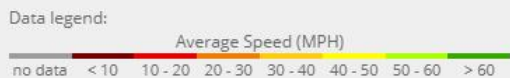


Highway Performance | Truck Average Speed (9 AM - 11 AM)

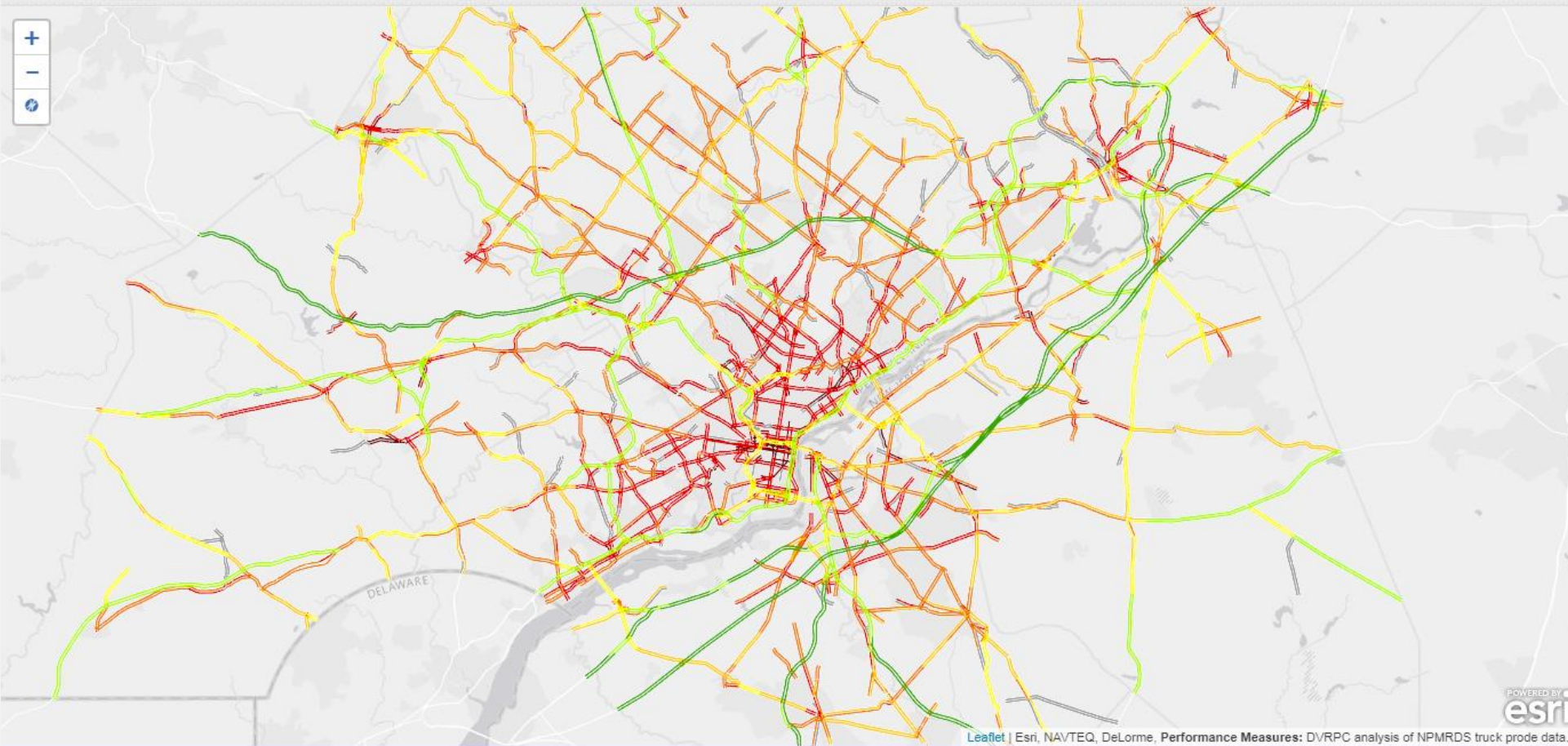


Select performance measure:
Travel Time Index Average Speed

Select time period:
Pause



Highway Performance | Truck Average Speed (11 AM - 1 PM)



Select performance measure:
Travel Time Index Average Speed ⓘ

Select time period:
Pause ◀ ▶

