

A RESOURCE FOR TRUCK PARKING SOLUTIONS!

NICOLE J. KATSIKIDES, PH.D., TEXAS A&M TRANSPORTATION INSTITUTE
FOR
MARYLAND DEPARTMENT OF TRANSPORTATION STATE HIGHWAY
ADMINISTRATION

WHY TRUCK PARKING?

- Truckers need rest, rest is mandated.
- Not enough truck parking throughout the U.S., Maryland/I-95 is a hot spot.
- Trucks brought it!
- County, State, and National economic development depends on it.
- When trucks can't park, it is a major safety issue.
- When trucks can't park, it impacts:
 - Business bottom line
 - Jobs

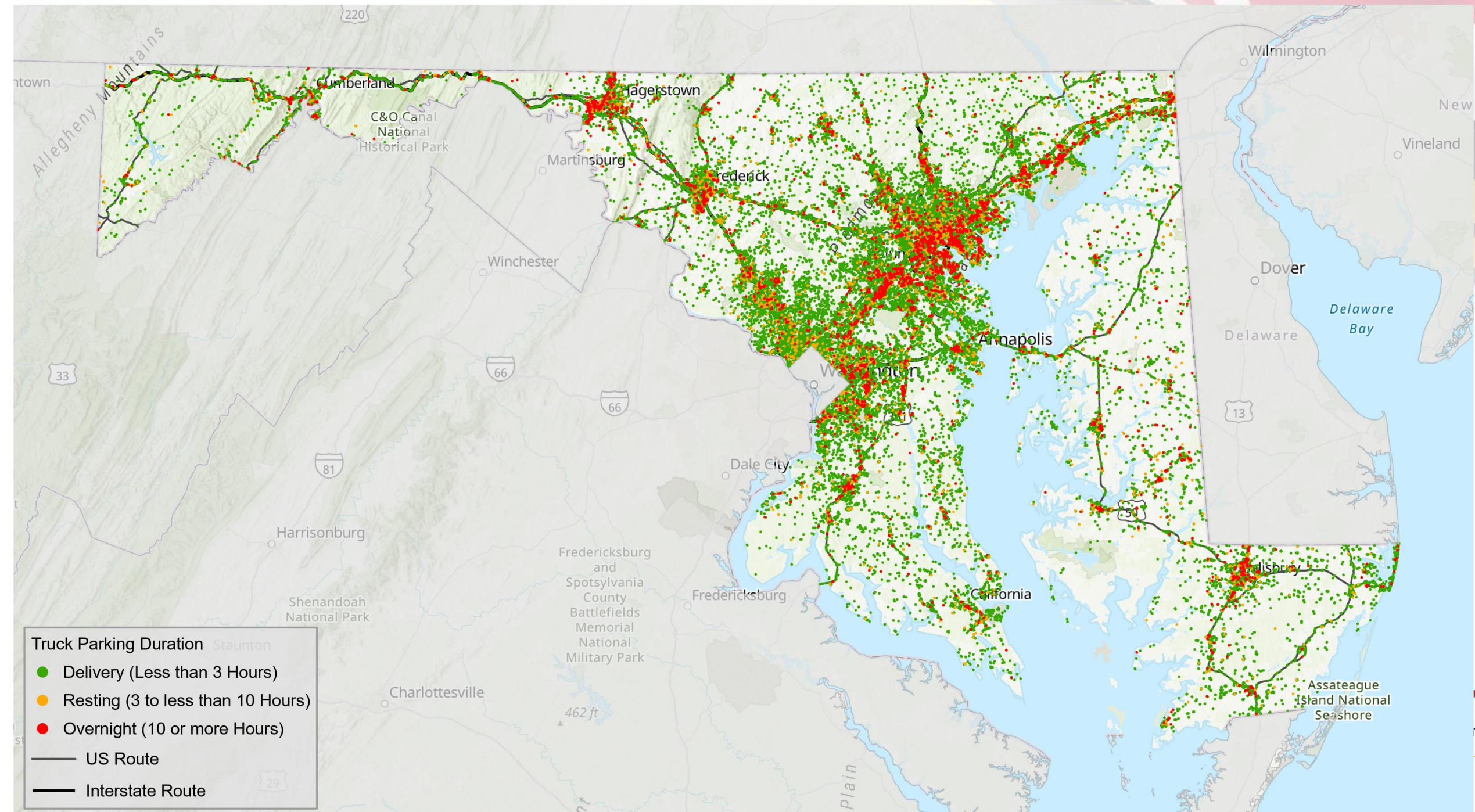
THE LOCAL CHALLENGE

- Constituents do not want truck parking, do not understand the need.
- Lack of truck parking sometimes means trucks are parked in places constituents do not like (residential areas).
- Economic and institutional growth means more trucks.
 - More trucks means more issues with parking.
 - Trucks need delivery accommodations.
- Changes in land use types and trends (e.g. densification, multi-use) create spaces that need to be served by many trucks.
- Increases in delivery, e-commerce create increased need for delivery parking/stopping.

RESOURCES AVAILABLE

- MDOT's Statewide Truck Parking Study
- Truck Parking Data Application
- Truck Parking Portal
- Emergency Truck Parking Options – for operational/law enforcement awareness
- Property availability information
- MDOT's new INRIX Trips Truck Waypoint data

MARYLAND TRUCK PARKING BY DURATION



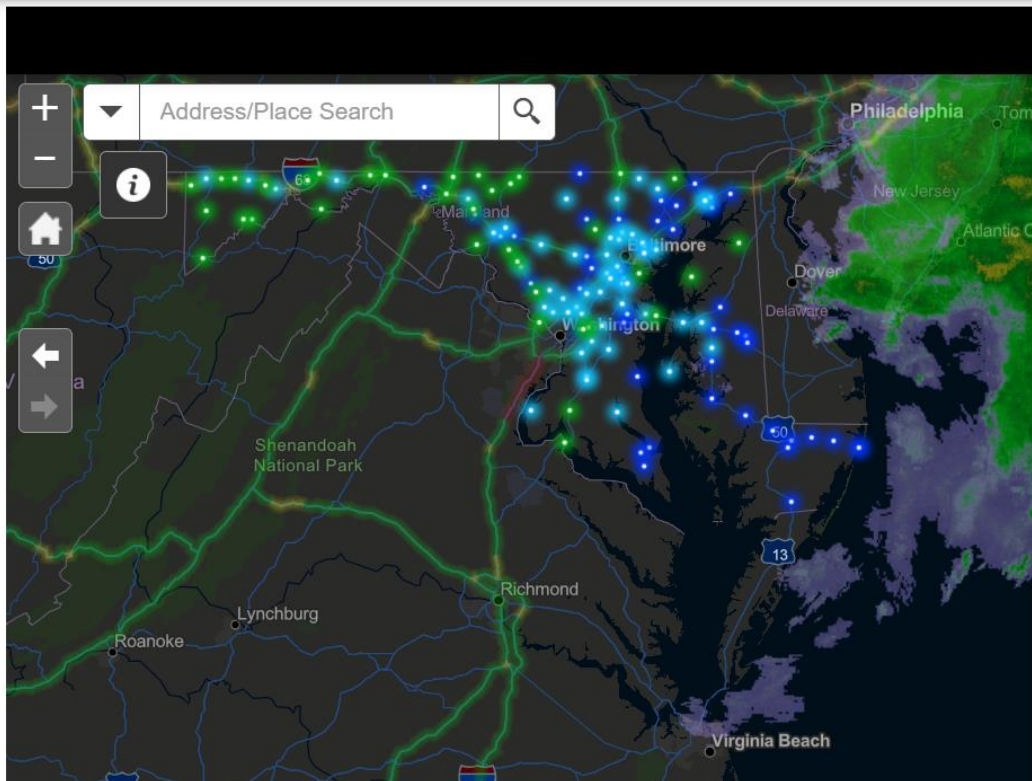
TRUCK PARKING APPLICATION

- [MDOT SHA Truck Parking Analysis \(arcgis.com\)](#)

TRUCK PARKING PORTAL



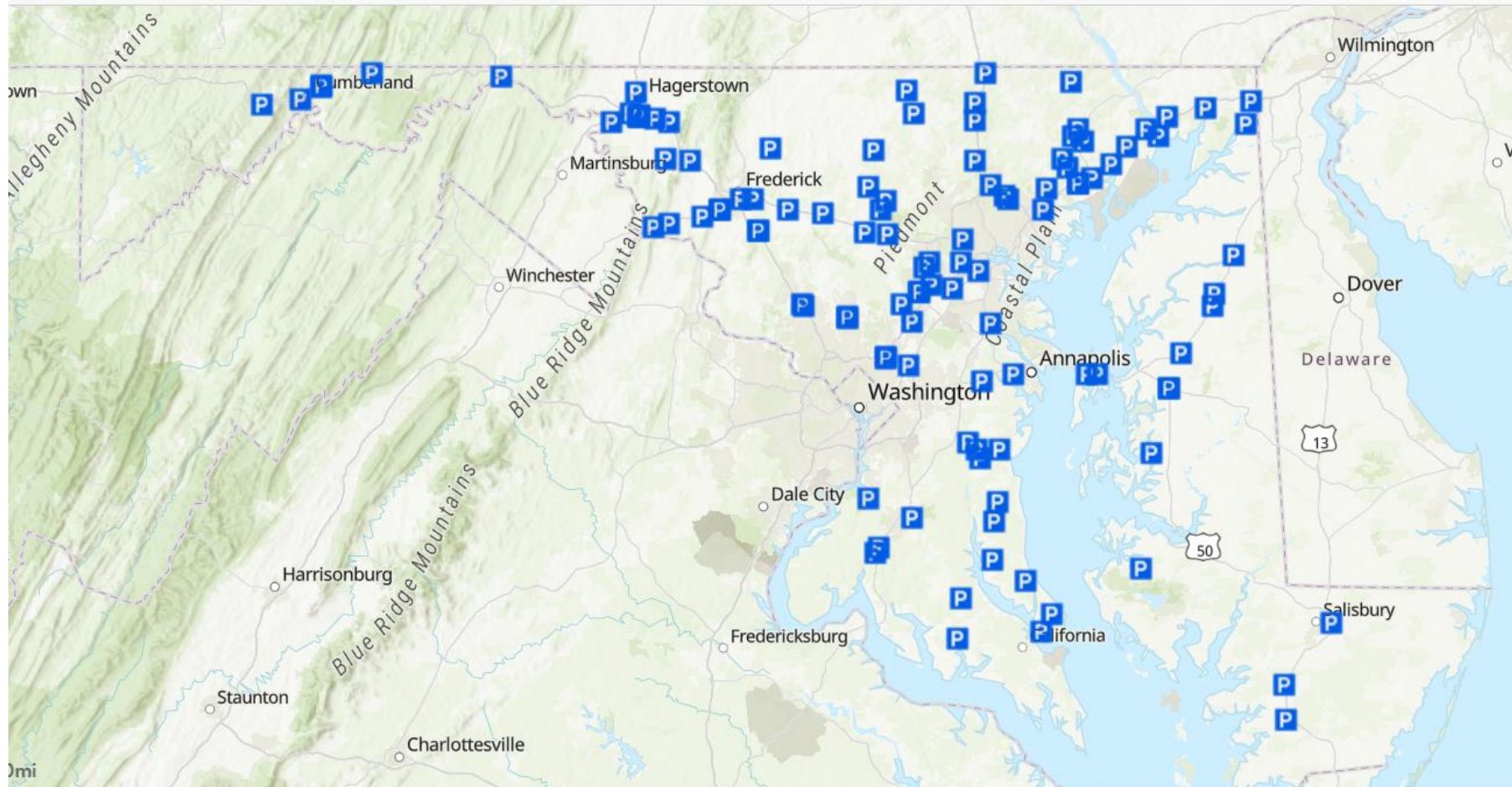
State Directory State Agencies Trans



Maryland Emergency Truck Parking Locations

During 6+ inch snow storms, tractor trailer drivers may use several commuter park and ride lots for safe haven to ride out the storm instead of parking on ramps and roadsides. This initiative provides an alternative for truckers traveling during heavy storms. **Green Parking symbols** represent **Regular Truck Parking** and the **Blue Parking symbols** represent **Emergency Truck Parking** at park and rides lots for potential parking during storms.

EMERGENCY TRUCK PARKING



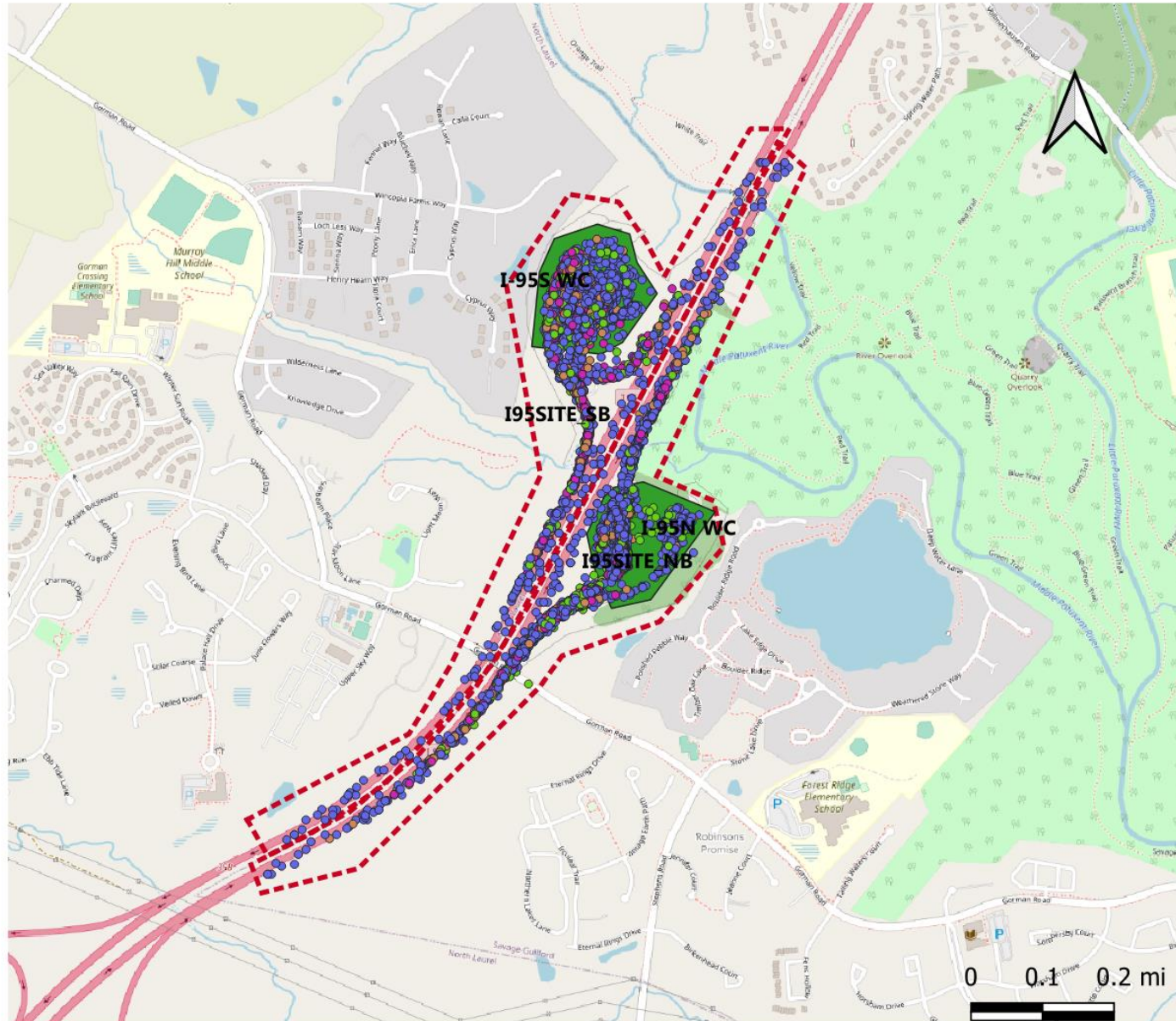
MDOT SHA INRIX TRIPS DATA PURCHASE

- Two years of Trips data for freight that provides:
 - Origin and Destination analytics (ability to understand key origins and destinations, as well as stopping points along the way).
 - Truck Waypoints useful in truck parking analytics.
 - Ability to look granularly at truck parking and bottlenecks around key freight generators to help improve logistics.
 - Statewide coverage.

UPCOMING MDOT SHA TRUCK PARKING WIDGET

- Web-based tool that allows for quarterly updates of truck parking use and demand information.
- Provides a visual of trucks parking capacity and truck parking demand clusters.

EXAMPLE OUTPUT: QUARTER STATISTICS FOR PARKING DURATION



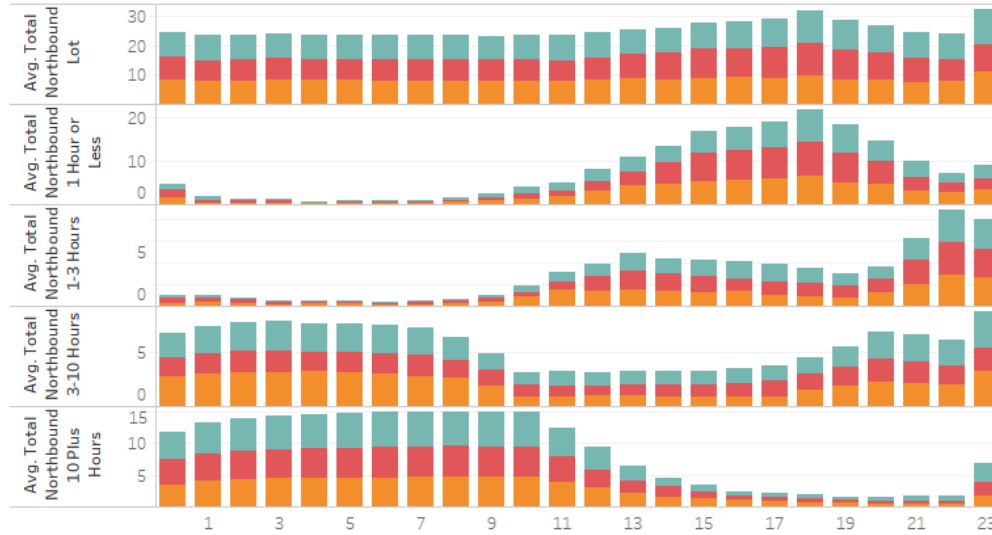
Parking Duration	Total count	In Parking lot	On Ramp	On Ramp Rate
less than 1 hour	10638	8603	2035	19%
1-3 hours	2425	1928	497	20%
3-10 hours	2276	1762	514	23%
more than 10 hours	2137	1482	655	31%

Rest Time

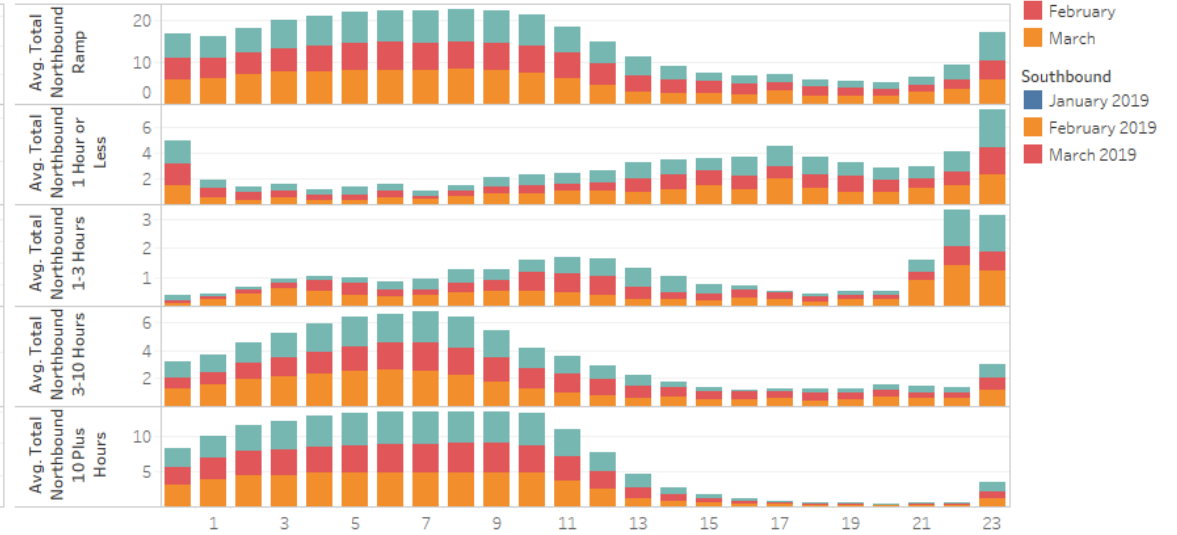
- less than 1 hour
- 1-3 hours
- 3-10 hours
- longer than 10 hours

EXAMPLE: PARKING TRENDS, LAUREL NORTHBOUND AND SOUTHBOUND

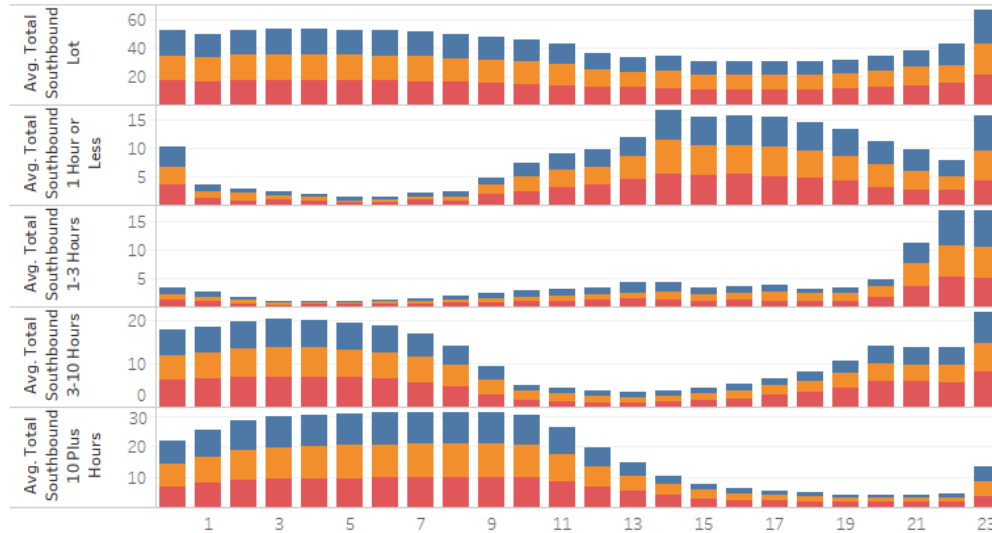
Parking by Day, Month and Length of Parking



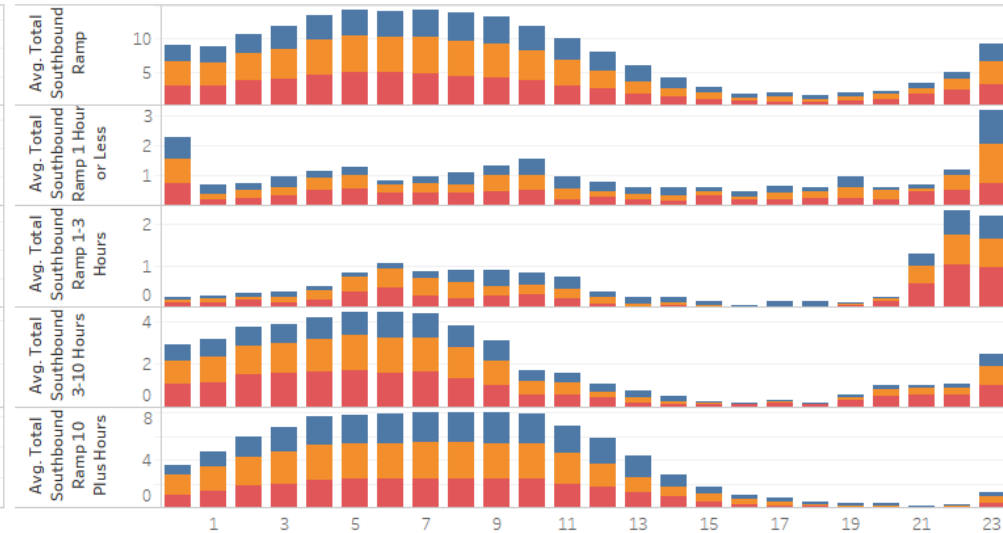
Parking by Day, Month and Length of Parking



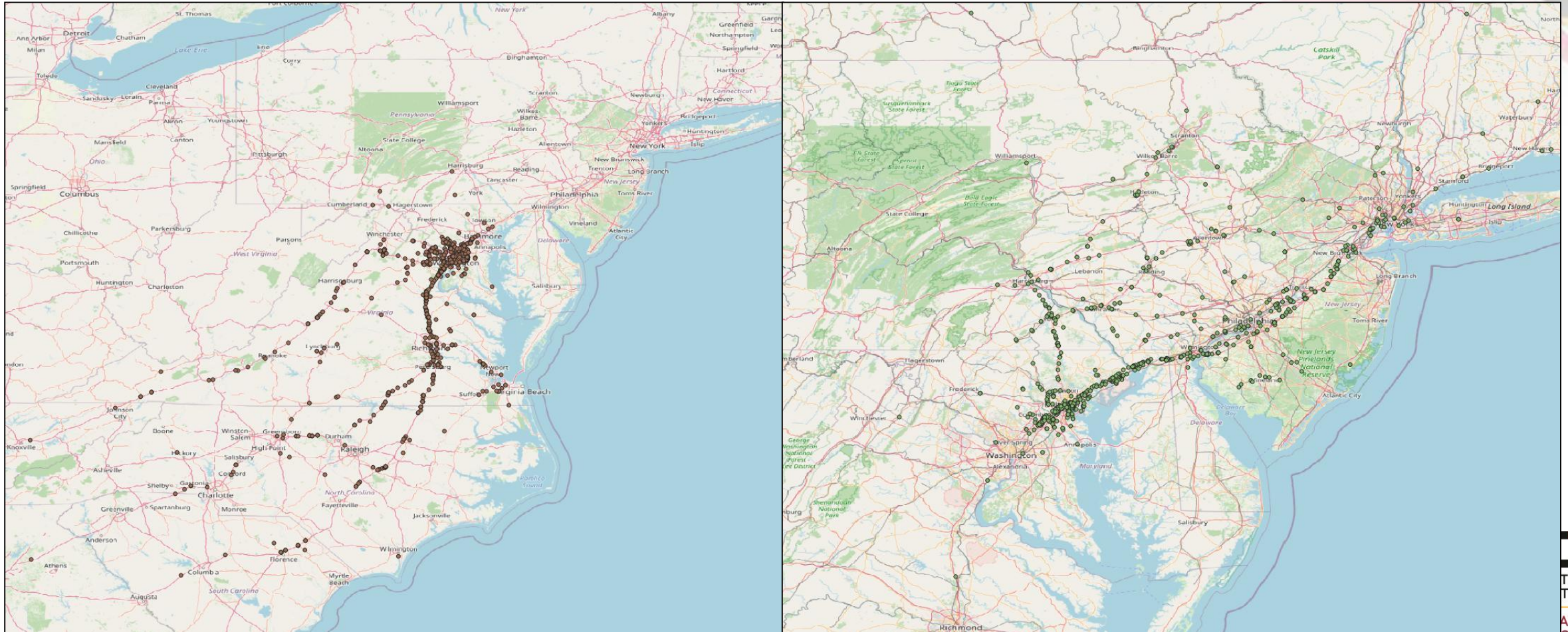
Utilization by Hour, Month and Length of Parking



Utilization by Hour, Month and Length of Parking



EXAMPLE: ORIGINS AND DESTINATIONS OF LESS THAN 1 HOUR RAMPS TRUCKS, NORTHBOUND



BOWMAN DEVELOPMENT – TRUCK PARKING

- www.bowmandevelopment.com



FOR MORE INFORMATION

Nicole Katsikides

Texas A&M Transportation Institute for MDOT SHA

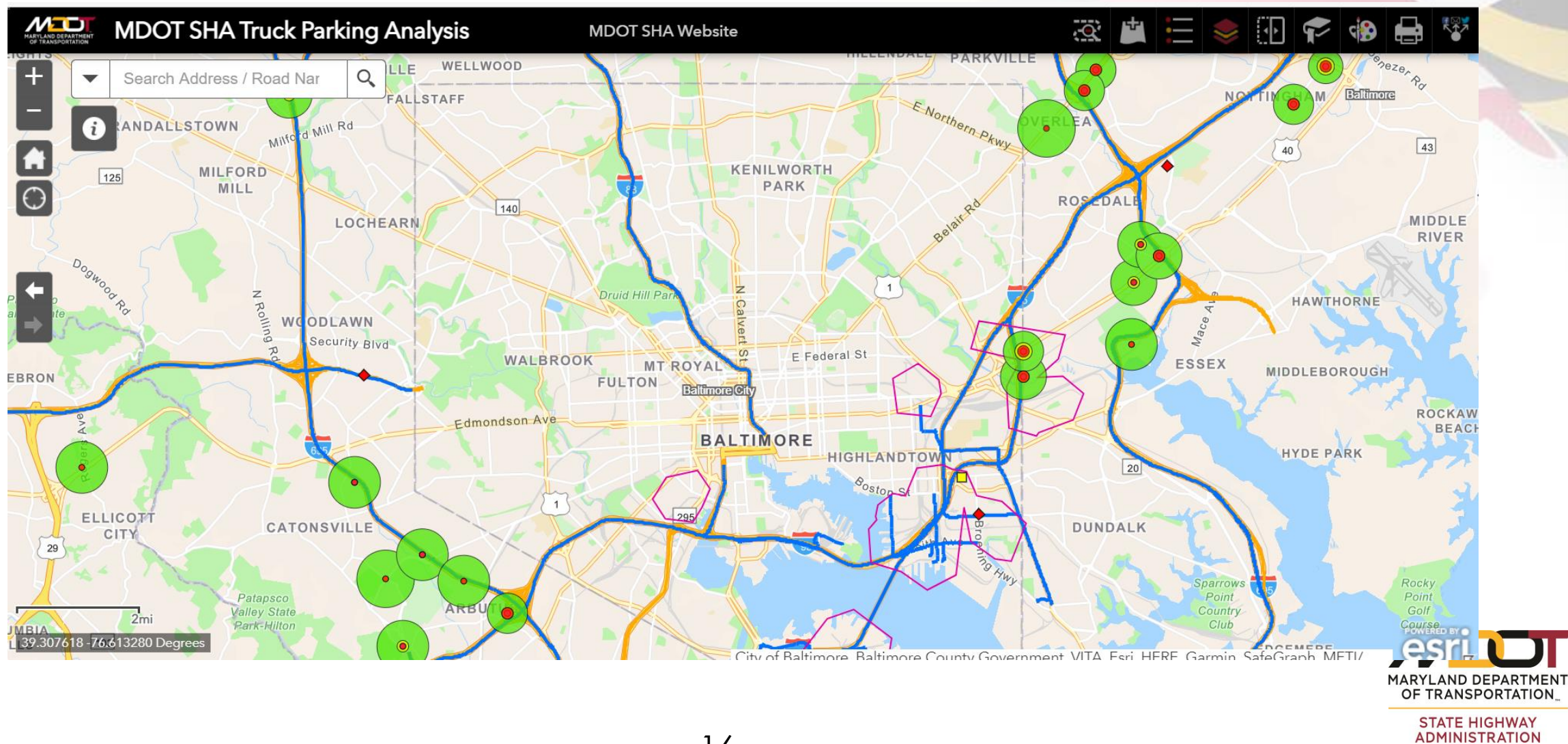
443-322-6762

Nkatsikides.consultant@mdot.Maryland.gov

Or

N-Katsikides@tti.tamu.edu

TRUCK PARKING APPLICATION STATIC SLIDES





MDOT SHA Truck Parking Analysis

MDOT SHA Website





MDOT SHA Truck Parking Analysis

MDOT SHA Website



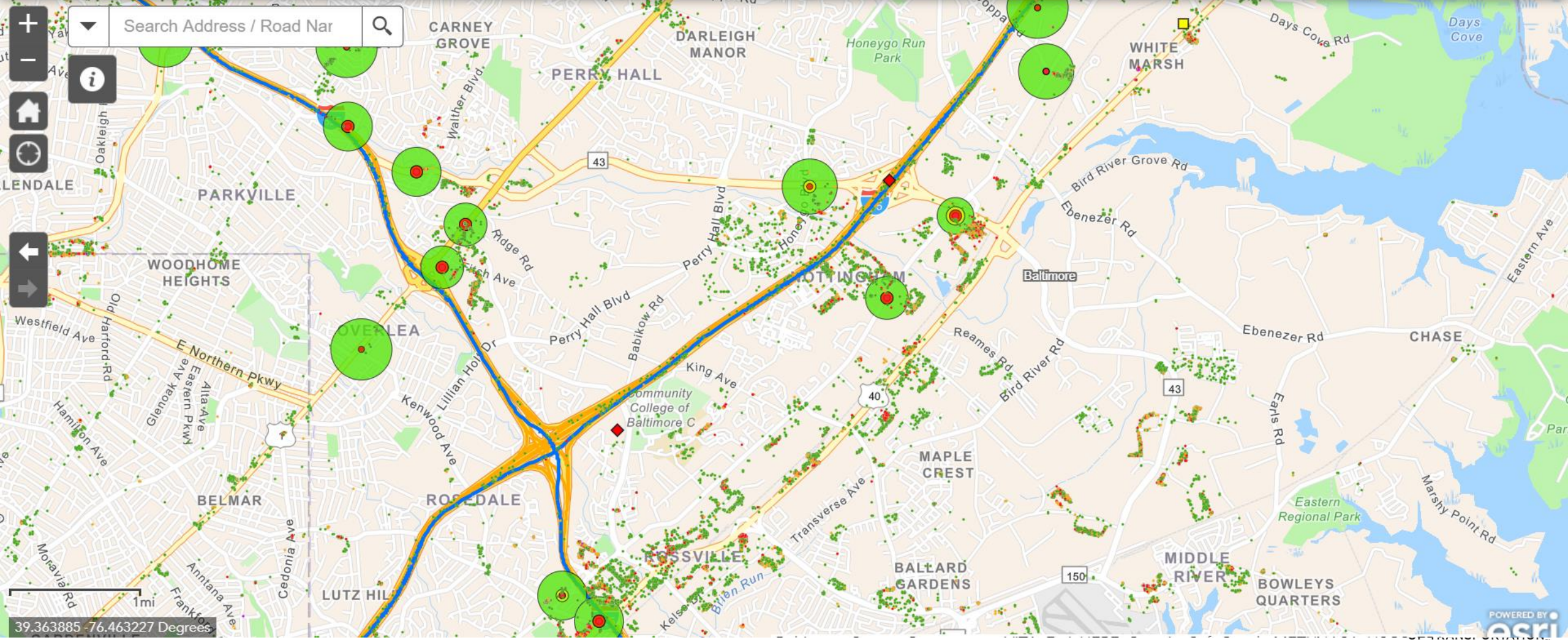
+

-

▼

Search Address / Road Nar

🔍



39.363885 -76.463227 Degrees

