

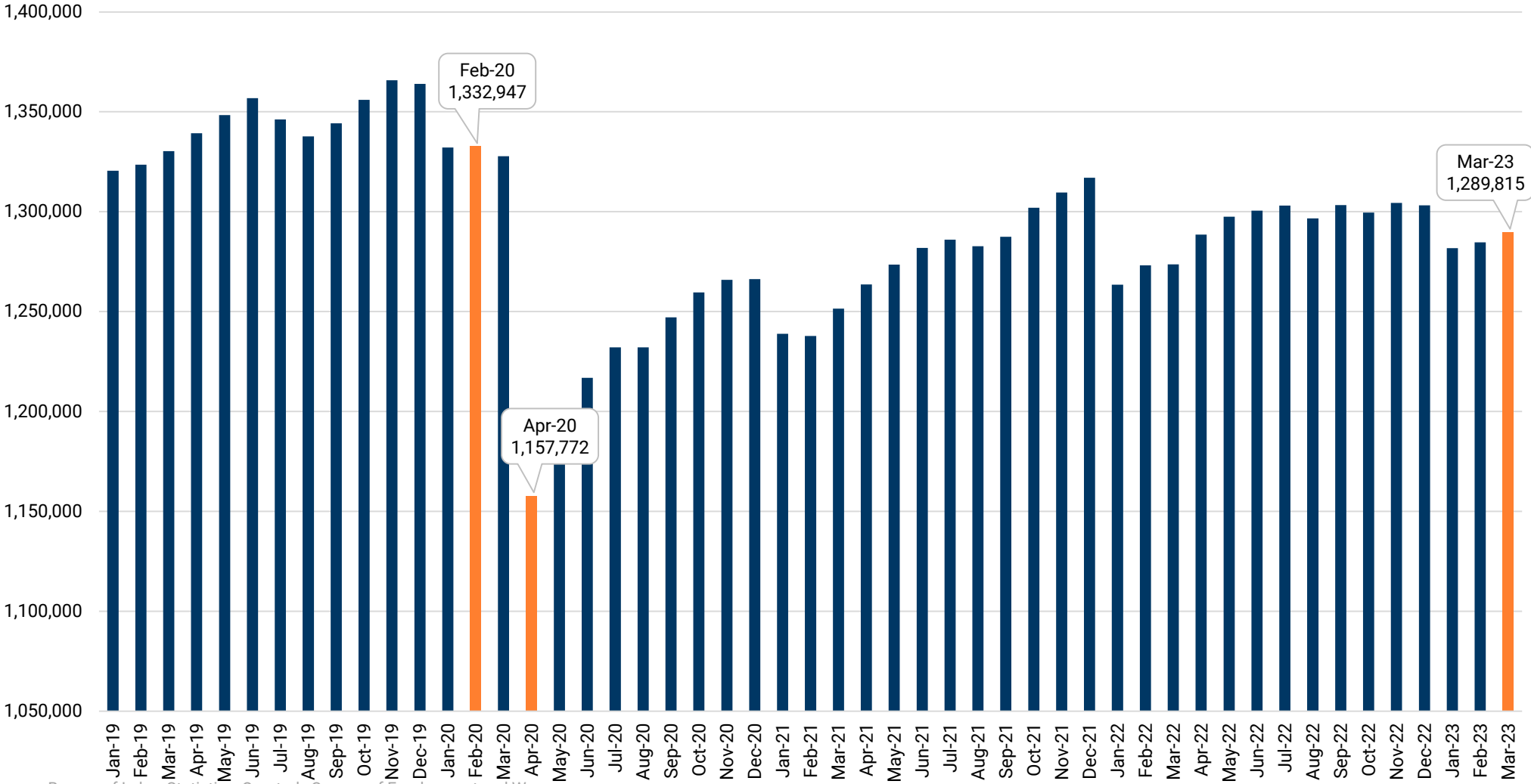


# UPWP Task - Post-pandemic Trends

- Four Proposals Received
- Each Review Team Member Evaluated All Four Proposals
- Review Team Met to Discuss Proposals and Reach Consensus
- Award Decision Made
- Preliminary Meeting – Contract Details (Oct 25)
- Project Kickoff – Early November

# Cooperative Forecasts: Forecast Update and Master Establishment File

# QCEW Employment – Baltimore MSA



Source: Bureau of Labor Statistics, Quarterly Census of Employment and Wages.



# QCEW Employment – Selected Geographies

Jurisdiction	Feb-20	Apr-20	Mar-23	Feb-20 to Apr-20		Feb-20 to Mar-23	
				Num	Pct	Num	Pct
United States	147,811,747	127,242,130	151,418,052	-20,569,617	-13.9%	3,606,305	2.4%
Maryland	2,669,105	2,312,555	2,647,509	-356,550	-13.4%	-21,596	-0.8%
Baltimore MSA	1,332,947	1,157,772	1,289,815	-175,175	-13.1%	-43,132	-3.2%
Anne Arundel	274,735	229,838	258,803	-44,897	-16.3%	-15,932	-5.8%
Baltimore City	343,676	314,836	335,410	-28,840	-8.4%	-8,266	-2.4%
Baltimore County	374,848	322,680	363,134	-52,168	-13.9%	-11,714	-3.1%
Carroll	56,856	48,864	57,368	-7,992	-14.1%	512	0.9%
Harford	93,503	80,071	91,862	-13,432	-14.4%	-1,641	-1.8%
Howard	174,299	149,676	167,986	-24,623	-14.1%	-6,313	-3.6%
Queen Anne's	15,030	11,807	15,252	-3,223	-21.4%	222	1.5%

Source: Bureau of Labor Statistics, Quarterly Census of Employment and Wages.

# Round Update and Master Establishment File

- **Timing of New Round / Round Update – TBD**
  - Discuss dates and participation (Dec/Feb CFG?)
- **Update to MEF Needed for Next Forecast**
  - R10 MEF based upon 2Q 2019 QCEW data
  - Will have access to 2Q 2023 QCEW data in (early) December
  - Duration needed for review
    - Need to accommodate time for MEF update into the forecast update schedule

# QCEW – Scale of Review

- QCEW File (March 2023) – Large Employers

Records with Emp >= 100 (March 2023)

Jurisdiction	Counts		Share of Jur	
	Records	Emp	Records	Emp
Anne Arundel	405	126,936	2.2%	49.0%
Baltimore City	528	224,407	3.3%	66.1%
Baltimore County	619	174,777	2.5%	48.4%
Carroll	84	20,529	1.6%	36.0%
Harford	145	46,093	2.1%	48.3%
Howard	293	72,228	2.4%	43.3%
Queen Anne's	18	3,751	1.0%	24.9%
Region	2,092	668,721	2.5%	51.7%

Source: Maryland Department of Labor; Baltimore Metropolitan Council.

# For More Information

---

**Shawn Kimberly, AICP** | Principal Planner

410-732-0500 x1026 | [skimberly@baltometro.org](mailto:skimberly@baltometro.org) | [www.baltometro.org](http://www.baltometro.org)

