



Update: UPWP Task

Cooperative Forecasting Group

February 22, 2023



UPWP – Public Review Schedule

- February 8 Begin 30-day review
- March 9 Deadline for public comments
- March 28 Present comments to BRTB
- April 21 BRTB votes
- July 1 Work program can begin

UPWP – Focus Area Projects

- Draft UPWP includes 12 New Focus Area Projects
- The task proposed by the CFG is included in the draft UPWP

UPWP – Focus Area Projects

- Draft UPWP includes 12 New Focus Area Projects
- The task proposed by the CFG is included in the draft UPWP
- Consolidation of CFG task with related project
 - “Future Trends: Employment, Commercial Real Estate, and Housing Location Choice”
 - “Regional Workers’ Travel Choices”

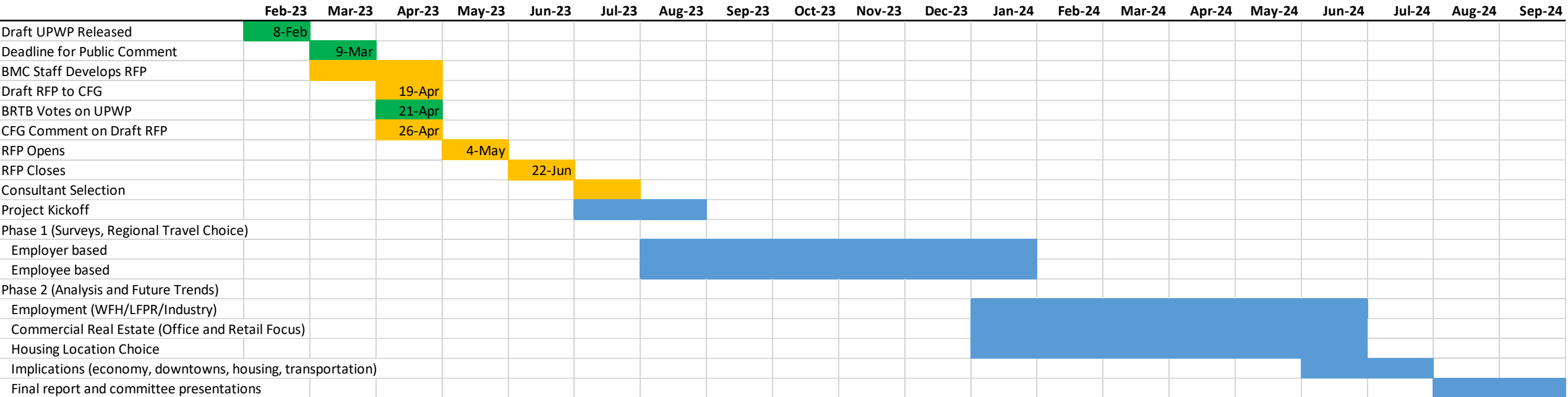
UPWP – Focus Area Projects

- Regional Workers' Travel Choices

- Purpose: Establish a monitoring data collection program to understand regional workers' travel choices and patterns. Design a survey and distribute to regional households collecting basic characteristics and detailed household labor force travel and location choices.
- Data to be collected: Basic household and member characteristics and details on commute travel; work location (home versus office), home location, day of the week flexibility; information about the commute. Participants will be asked to provide this data for current day and pre-pandemic times.
- Deliverables:
 - Survey instrument design
 - Data on commuter travel choices and location
 - A statistical cross-tab analysis on commuter travel choices and locations with person/household demographic characteristics

UPWP Task – Draft Timeline

**Draft Timeline for Consolidated UPWP Task:
"Future Employment and Housing Trends, and Regional Travel Choices"**



Note: This consolidated UPWP Task combines two related submissions:

"Regional Workers' Travel Choices"

"Future Trends: Employment, Commercial Real Estate, and Housing Location Choice"

- = UPWP logistics
- = Consultant selection process
- = Consultant work



For More Information

Shawn Kimberly, AICP | Senior Planner

410-732-0500 x1026 | skimberly@baltometro.org | www.baltometro.org

