

# 2016 Census Update

June 2017



## 2016 Census Update

2016 PEP Estimate

Housing and Development Data

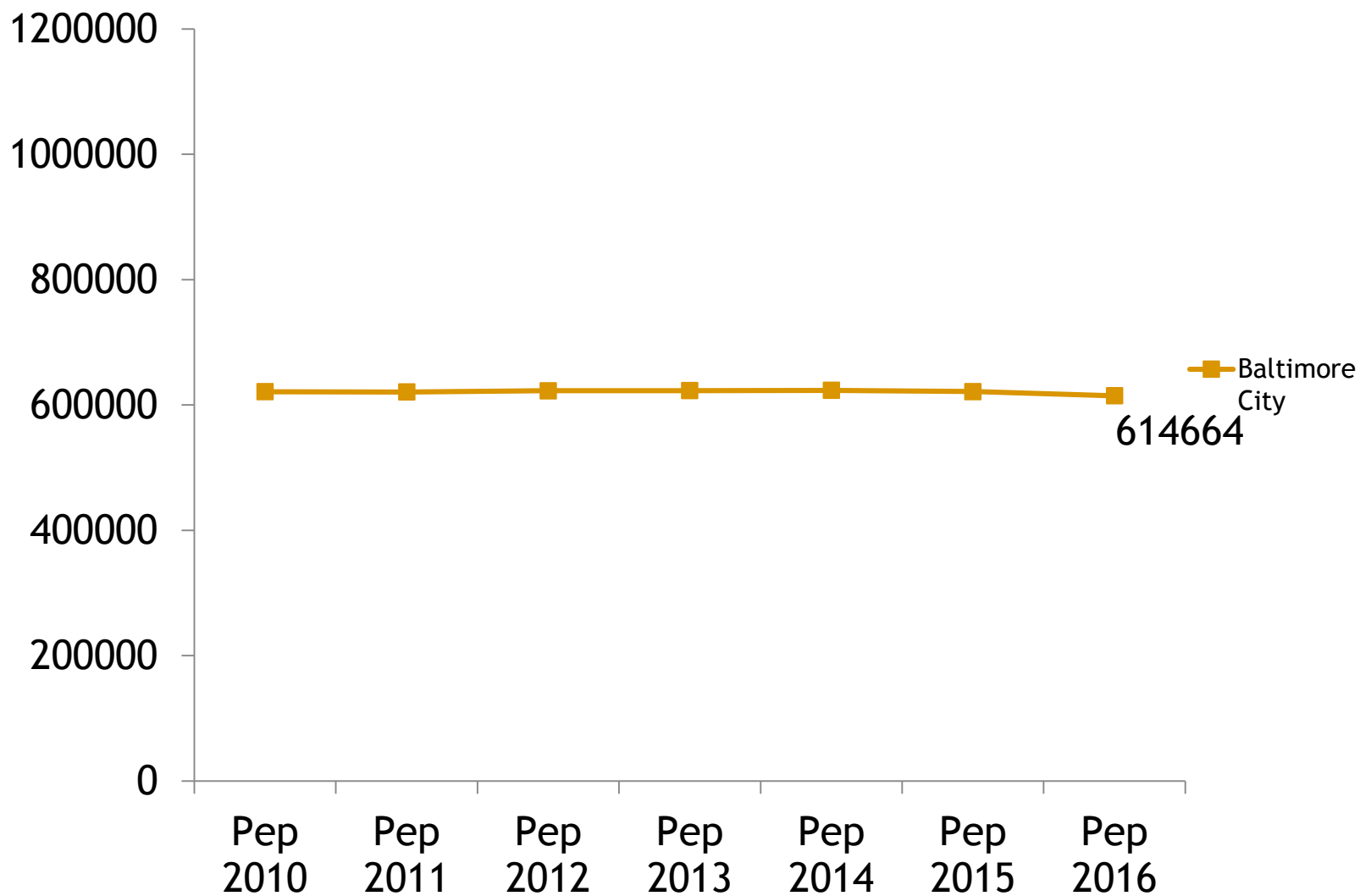
Investigating a Challenge to the PEP

Moving On: Nature of the Population Change

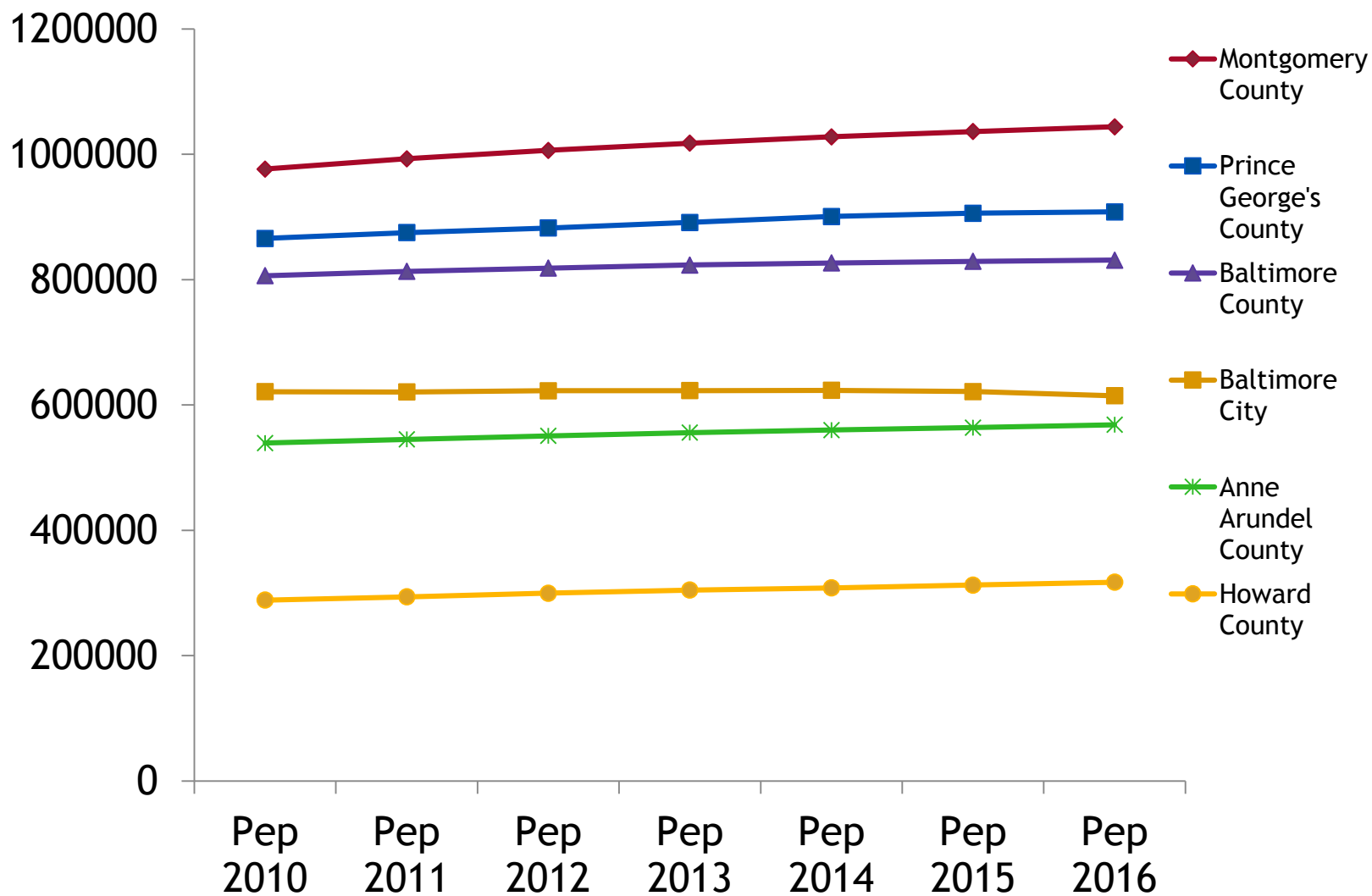
Policy Implications



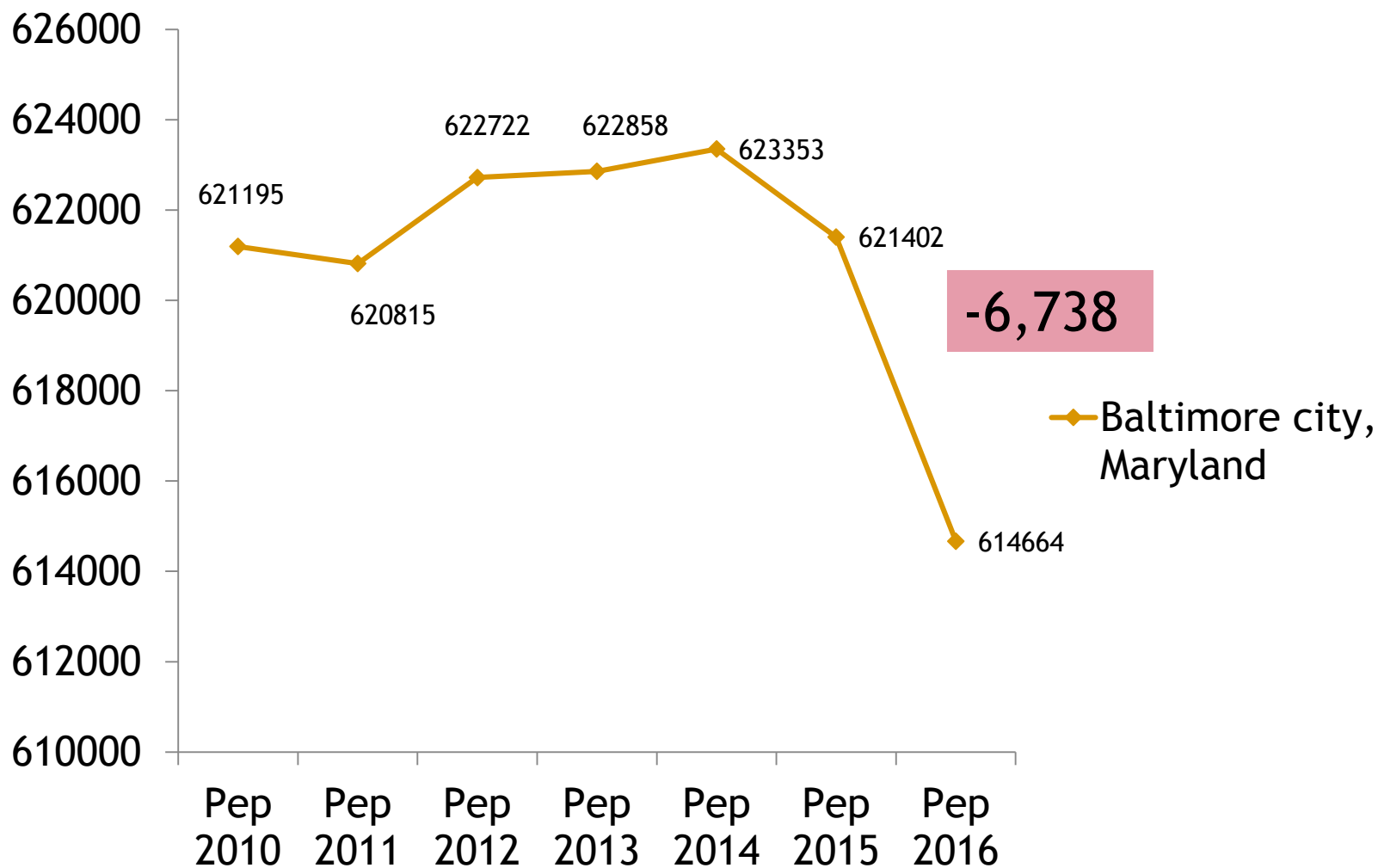
## 2016 PEP Estimate



## 2016 PEP Estimate



## 2016 PEP Estimate



## Cohort Cities (2015-2016)

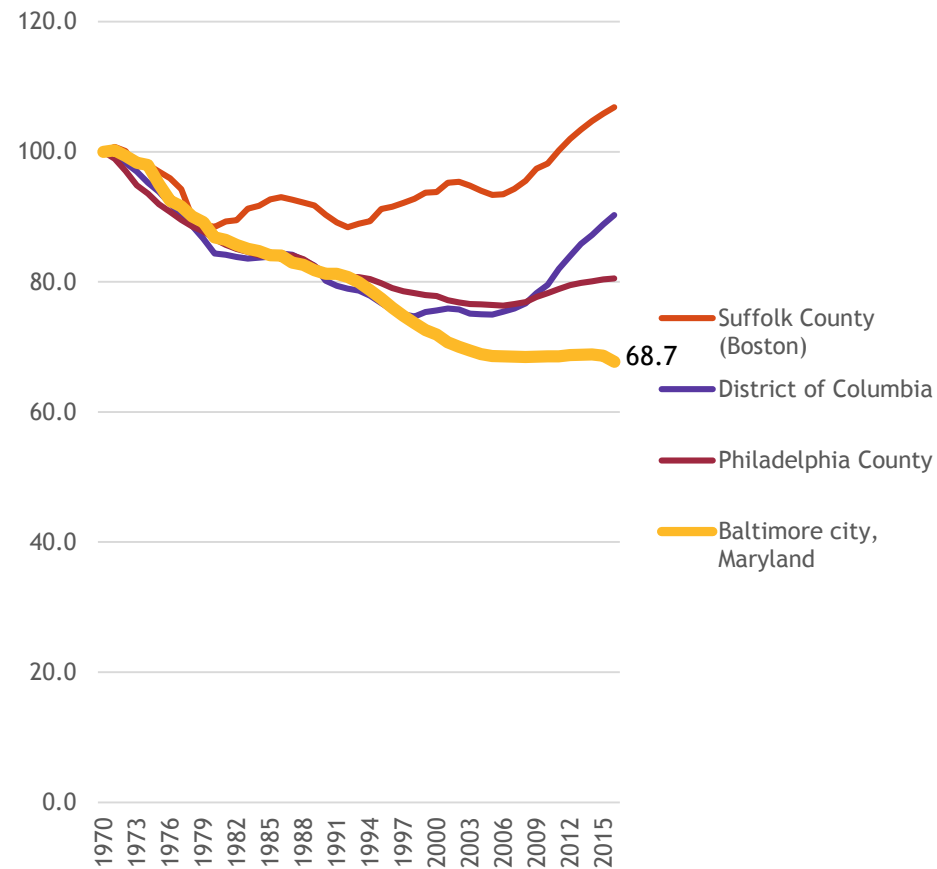
<i>County</i>	<i>Population</i>	<i>Numeric</i>	<i>Percent</i>	<i>Births</i>	<i>Deaths</i>	<i>Domestic</i>	<i>International</i>
Cook County, IL	5203499	-21324	-0.41	68049	42297	-66244	18434
Wayne County, MI	1749366	-7696	-0.44	23209	18231	-17346	4279
Baltimore city, MD	614664	-6738	-1.08	8654	6871	-11008	2195
Cuyahoga County, OH	1249352	-5673	-0.45	14941	13563	-10122	3402
Suffolk County, NY	1492583	-5320	-0.36	15446	12793	-11278	4327
Milwaukee County, WI	951448	-4866	-0.51	13675	8176	-13186	2505
Allegheny County, PA	1225365	-3933	-0.32	13193	13995	-5821	3479
San Juan County, NM	115079	-3622	-3.05	1703	1026	-4341	42
St. Louis City, MO	311404	-3471	-1.1	4547	3070	-6189	981
Jefferson County, NY	114006	-3254	-2.78	2000	945	-4674	345



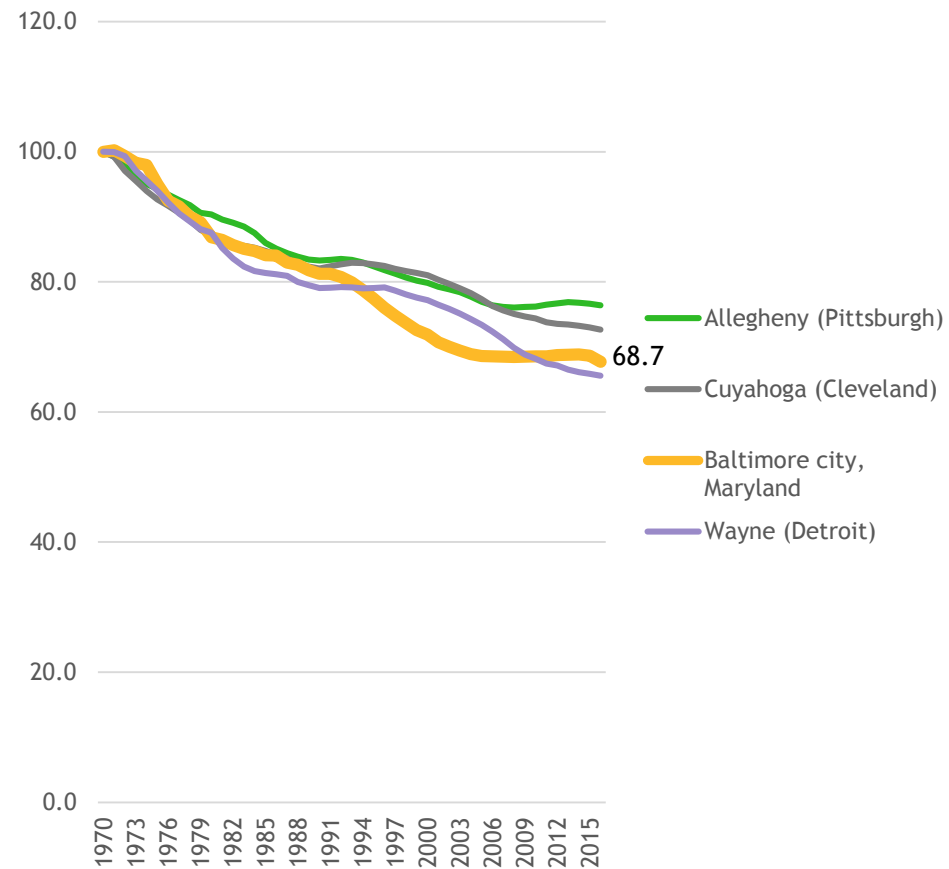
# “Cousins”

CEN

Population Change (1970=100)



Population Change (1970=100)

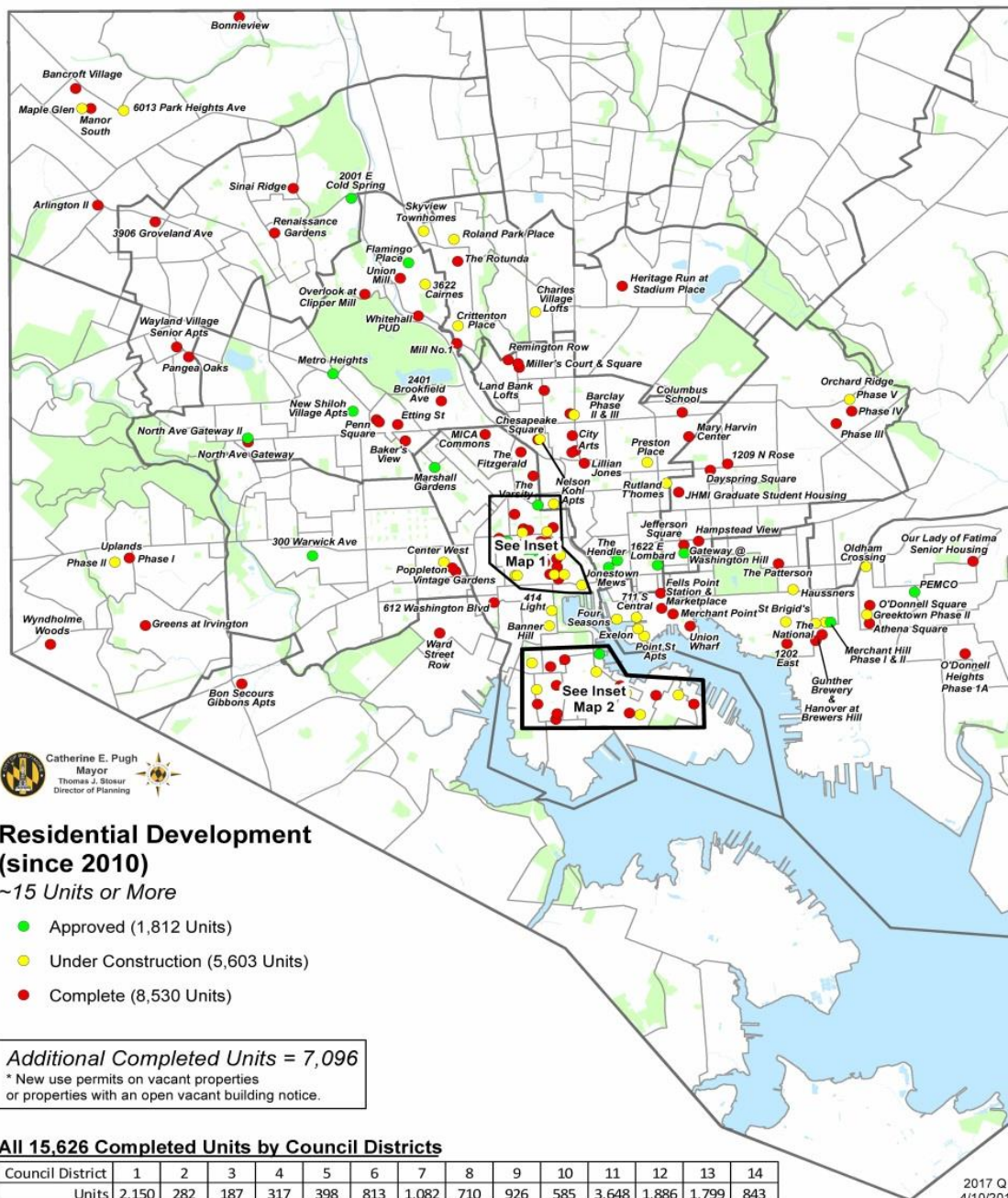


# Drop is Counterintuitive: New Units

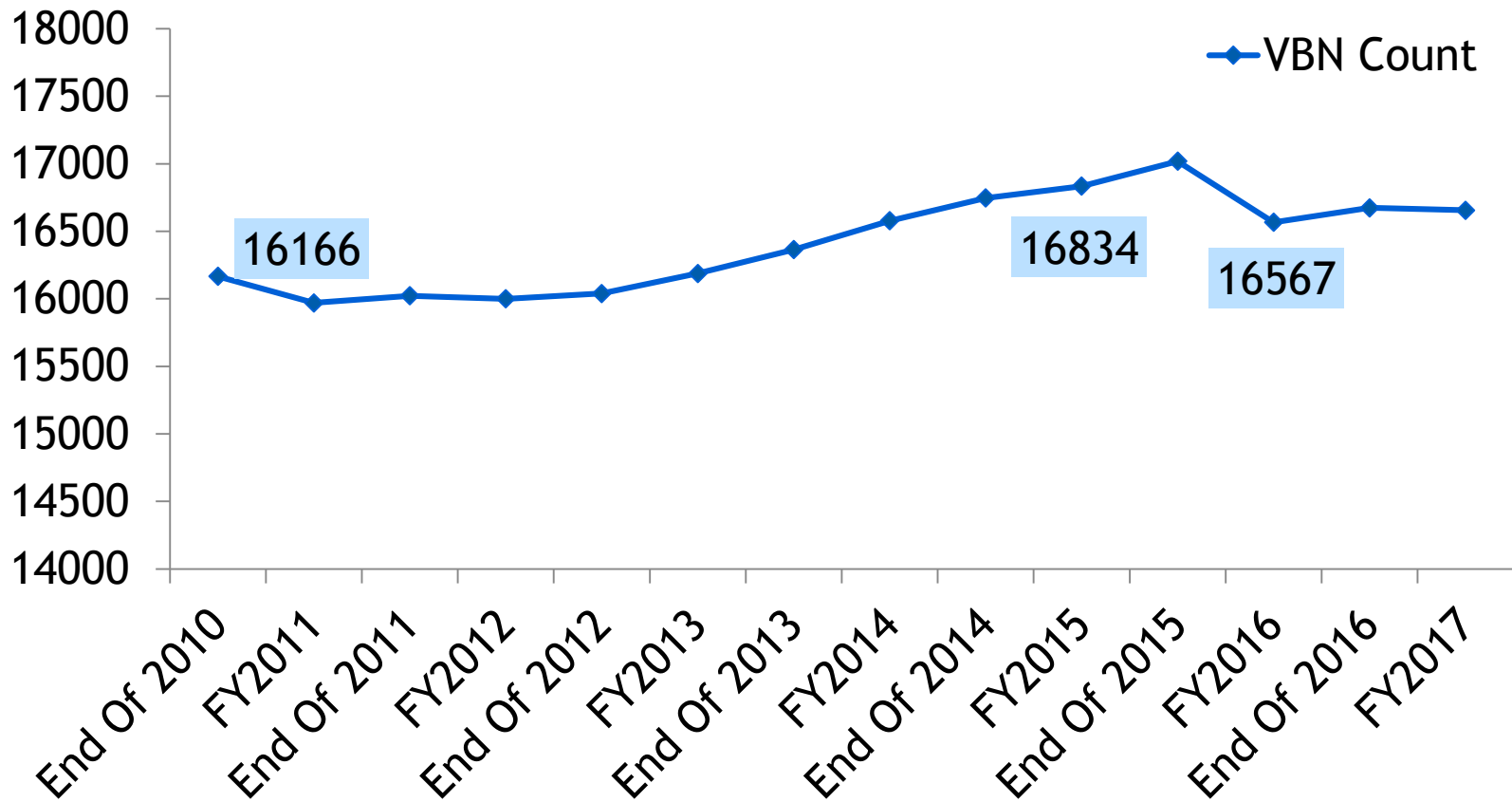
Since 2010:

**+ 15,626**  
*completed new units*

**+ 5,600**  
*under construction*



Drop is *Counterintuitive*: Vacancy is fairly flat and falls 2015 to 2016.



## Components of Change, 2015 to 2016

- PEP: *Cohort Components*

Total Change	Births	Deaths	Net Migration International	Net Migration Domestic
-----------------	--------	--------	-----------------------------------	------------------------------



## Exploring a Challenge

### 1. Rules for Challenge

## REVIEW GUIDE FOR THE POPULATION ESTIMATES CHALLENGE PROGRAM

NOTE: Incorporated places or MCDs that the Census Bureau lists as county-level statistical equivalents (see *Appendix C*) are not eligible for an updated population estimate based upon housing data because they were created using the county-level *Cohort Component method*; they must instead be challenged with updated data based upon births, deaths, migration, and group quarters.

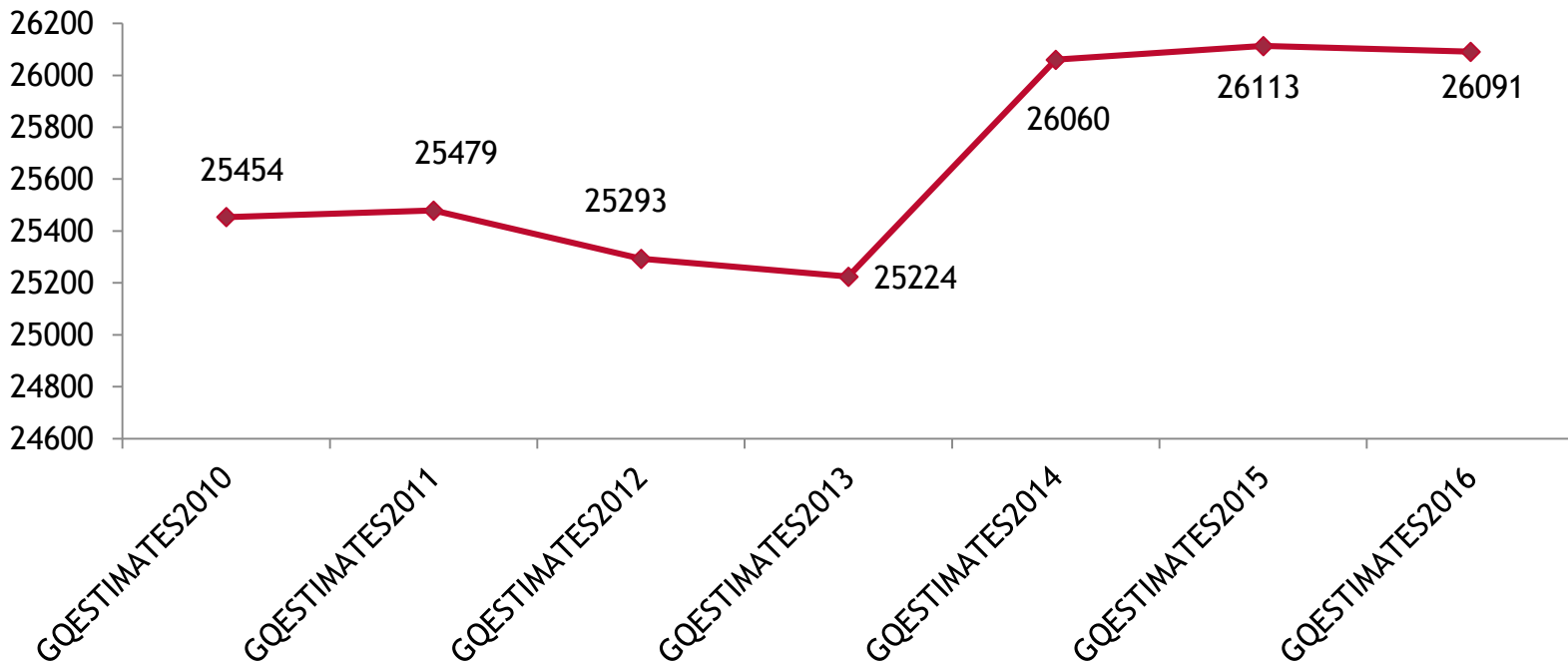
County jurisdictions (including Baltimore) ***are not able to use housing data*** as part of a challenge.



## Exploring a Challenge

### 1. Rules for Challenge

### 2. Group Quarters data



- State of Maryland Vital Statistics Administration within the Department of Health and Mental Hygiene (Federal-State Cooperative Program for Local Population Estimates)



## Exploring a Challenge

1. Rules for Challenge
2. Group Quarters data
3. Methodological changes



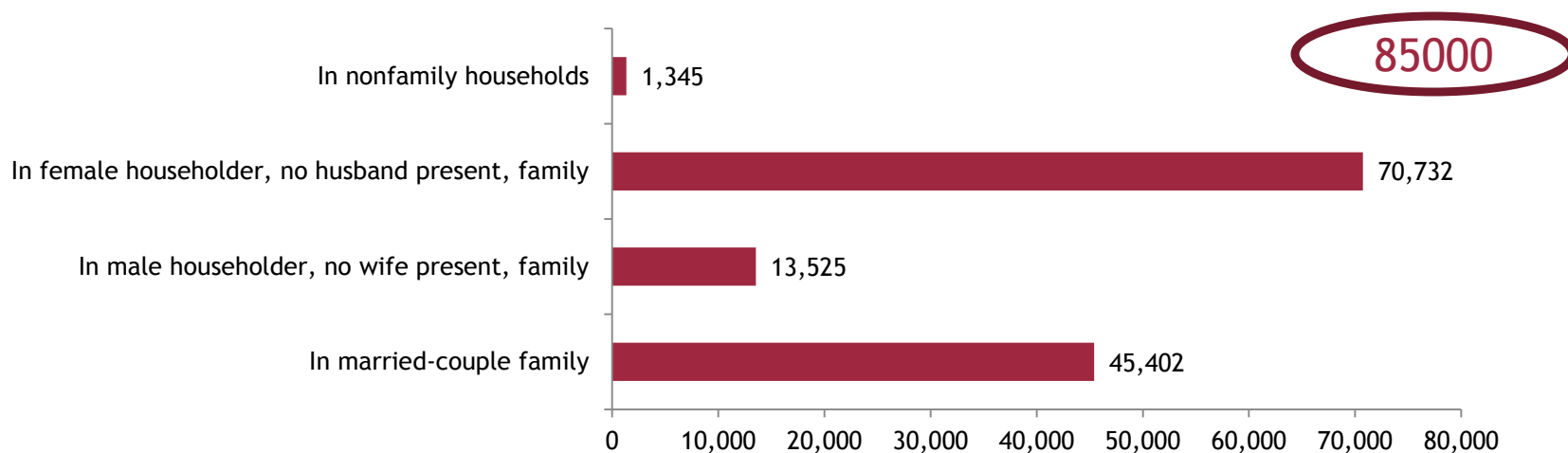
We changed the way we handle tax records from the Internal Revenue Service (IRS) for people ages 0-17. When duplicate records are found for children, we now select the dependent record instead of the primary filer record. This selection changes the under 18 net migration rates and the population by demographic characteristics in some states and counties.



## Exploring a Challenge

1. Rules for Challenge
2. Group Quarters data
3. Methodological changes

### Under 18 Population by Family Household Type



## Exploring a Challenge

1. Rules for Challenge
2. Group Quarters data
3. Methodological changes <<100 individuals



## Exploring a Challenge:

1. Rules for Challenge
2. Group Quarters data
3. Methodological changes
4. Intra-Region Migration Trends

AREA:	IN-MIGRATION			OUT-MIGRATION			NET MIGRATION	
	FROM:			TO:			(IN-OUT):	
	ESTIMATE	(+/-) MOE	PERCENT	ESTIMATE	(+/-) MOE	PERCENT	ESTIMATE	(+/-) MOE
Total Migration	37,848	1,897		38,182	1,951		-334	2,721
Intra-U.S. Migrants	33,997	1,813	100.0%	38,182	1,951	100.0%	-4,185	2,663
Intra-State Migrants	20,521	1,514	60.4%	21,212	1,480	55.6%	-691	2,117
Baltimore Region	15,392	1,312	45.3%	17,004	1,377	44.5%	-1,612	1,901
Anne Arundel	2,590	486	7.6%	2,460	459	6.4%	130	668
Baltimore County	10,299	1,130	30.3%	12,302	1,221	32.2%	-2,003	1,664
Carroll	307	110	0.9%	296	131	0.8%	11	171
Harford	736	228	2.2%	919	263	2.4%	-183	348
Howard	1,460	379	4.3%	1,027	327	2.7%	433	501
Baltimore City	0	0	0.0%	0	0	0.0%	0	0

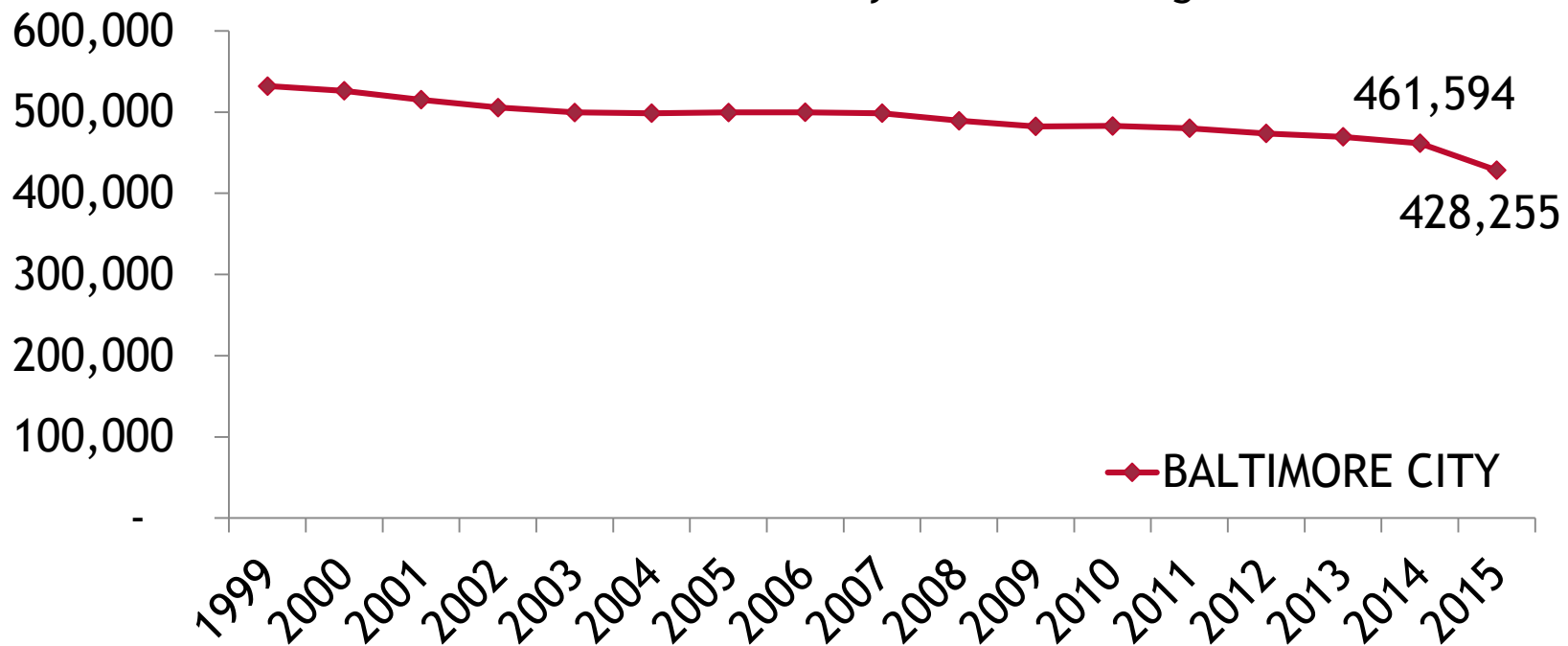
Source: Maryland Department of Planning, American Community Survey (2010-2014)



## Exploring a Challenge:

1. Rules for Challenge
2. Group Quarters data
3. Methodological changes
4. Intra-Region Migration Trends

Baltimore City State Tax Fillings



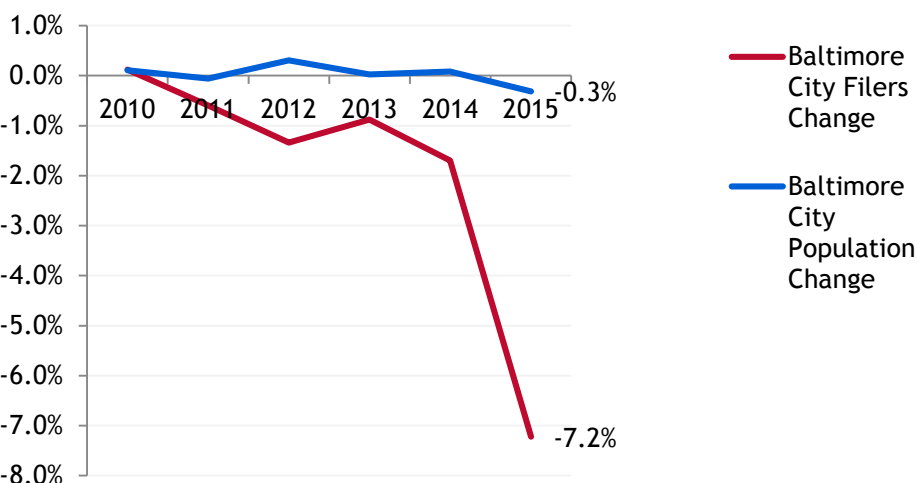
Source: Comptroller of Maryland, Bureau of Revenue Estimates



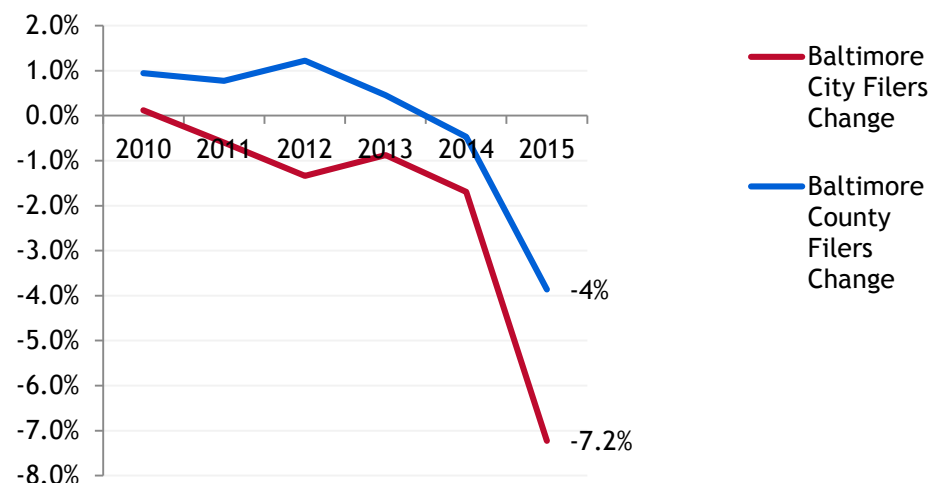
## Exploring a Challenge:

1. Rules for Challenge
2. Group Quarters data
3. Methodological changes
4. Intra-Region Migration Trends

Change in Population and State Tax Filers



Change in Population and State Tax Filers



Source: *Comptroller of Maryland, Bureau of Revenue Estimates*



## Exploring a Challenge:

- ✓ Rules for Challenge
- ✓ Group Quarters data
- ✓ Methodological changes
- ✓ Intra-Region Migration



## Agenda

2016 PEP Estimate

Housing and Development Data

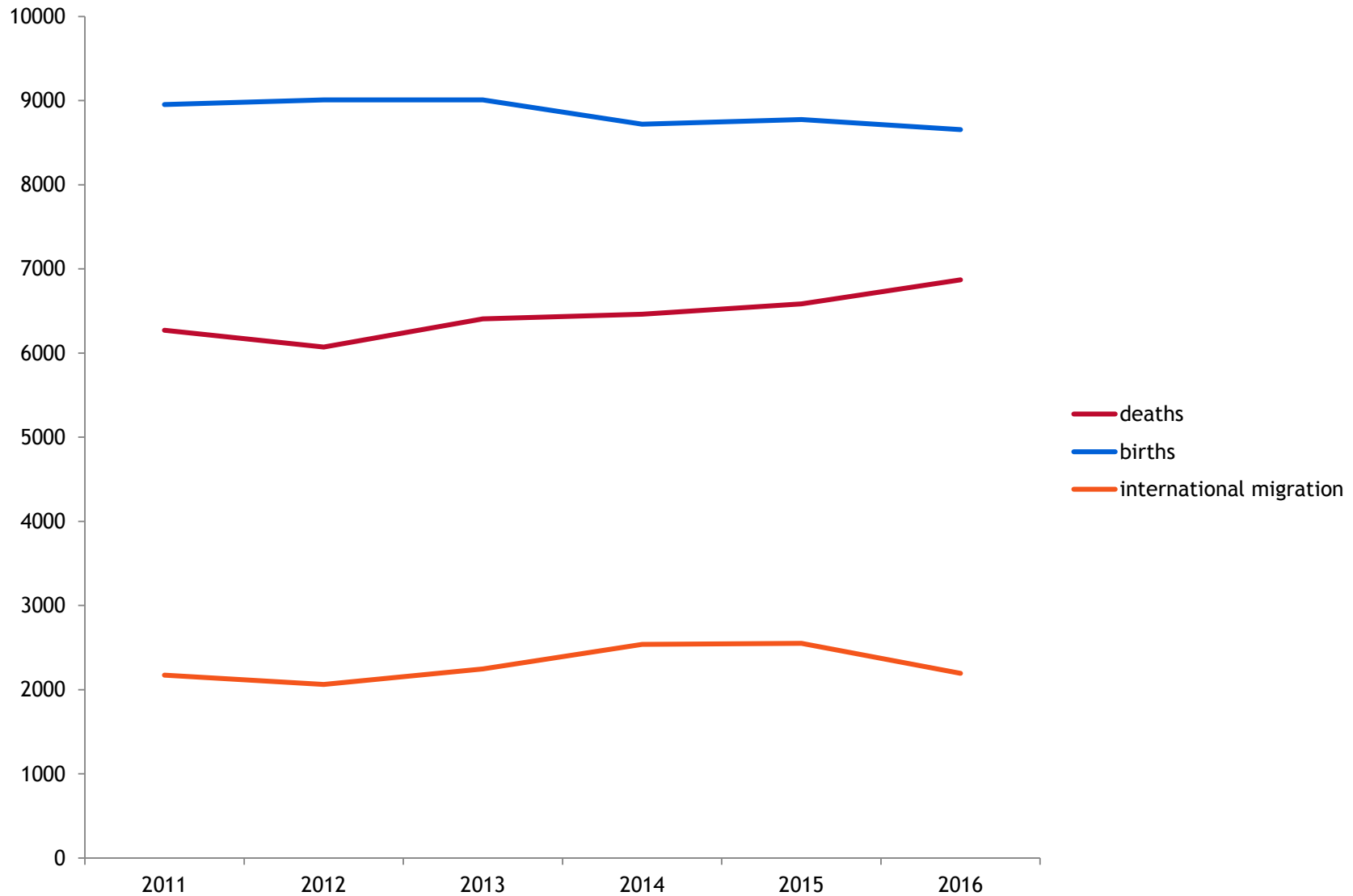
Investigating a Challenge to the PEP

Moving On: Nature of Population Change

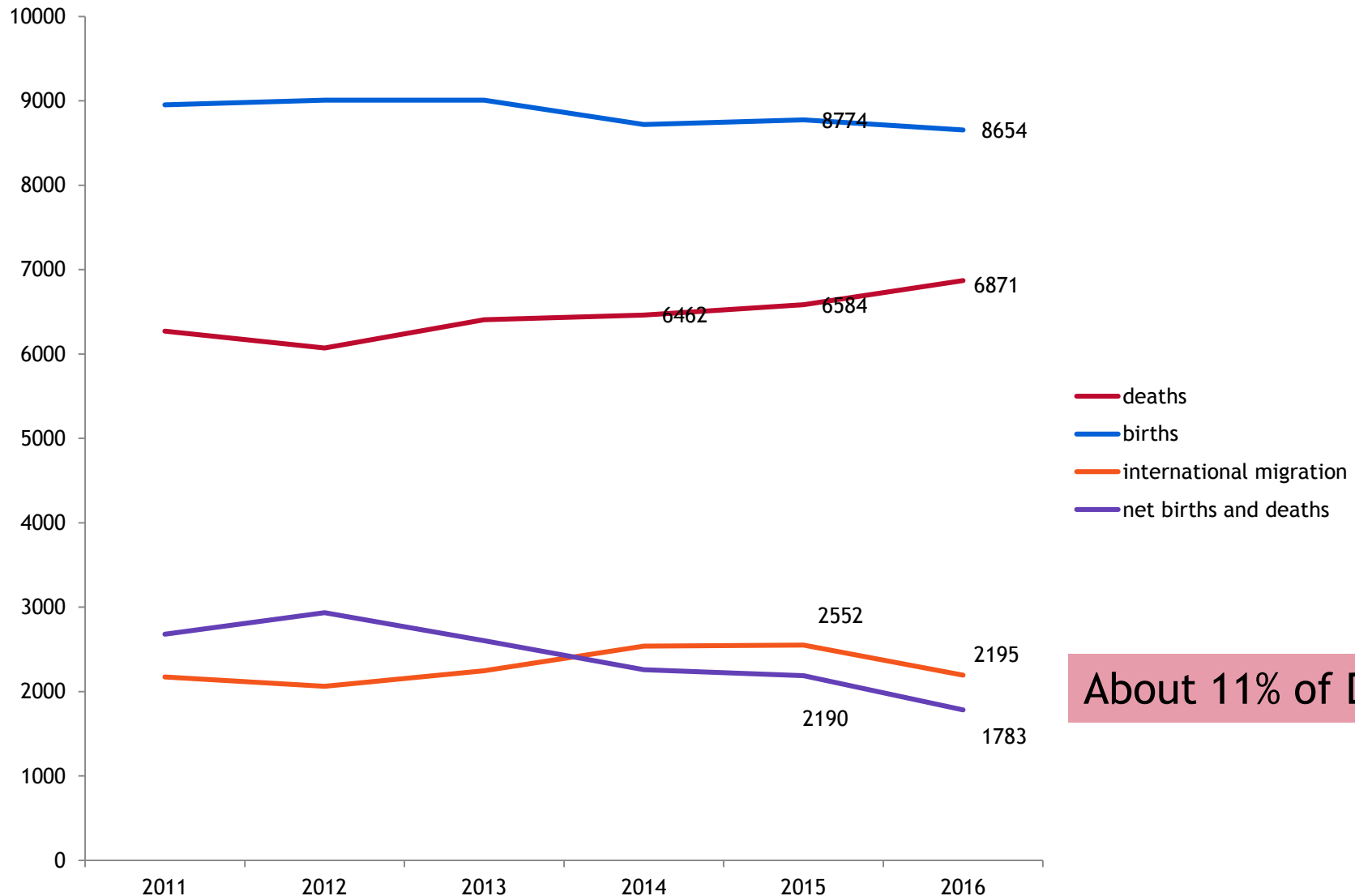
Policy Implications



## Other PEP Components



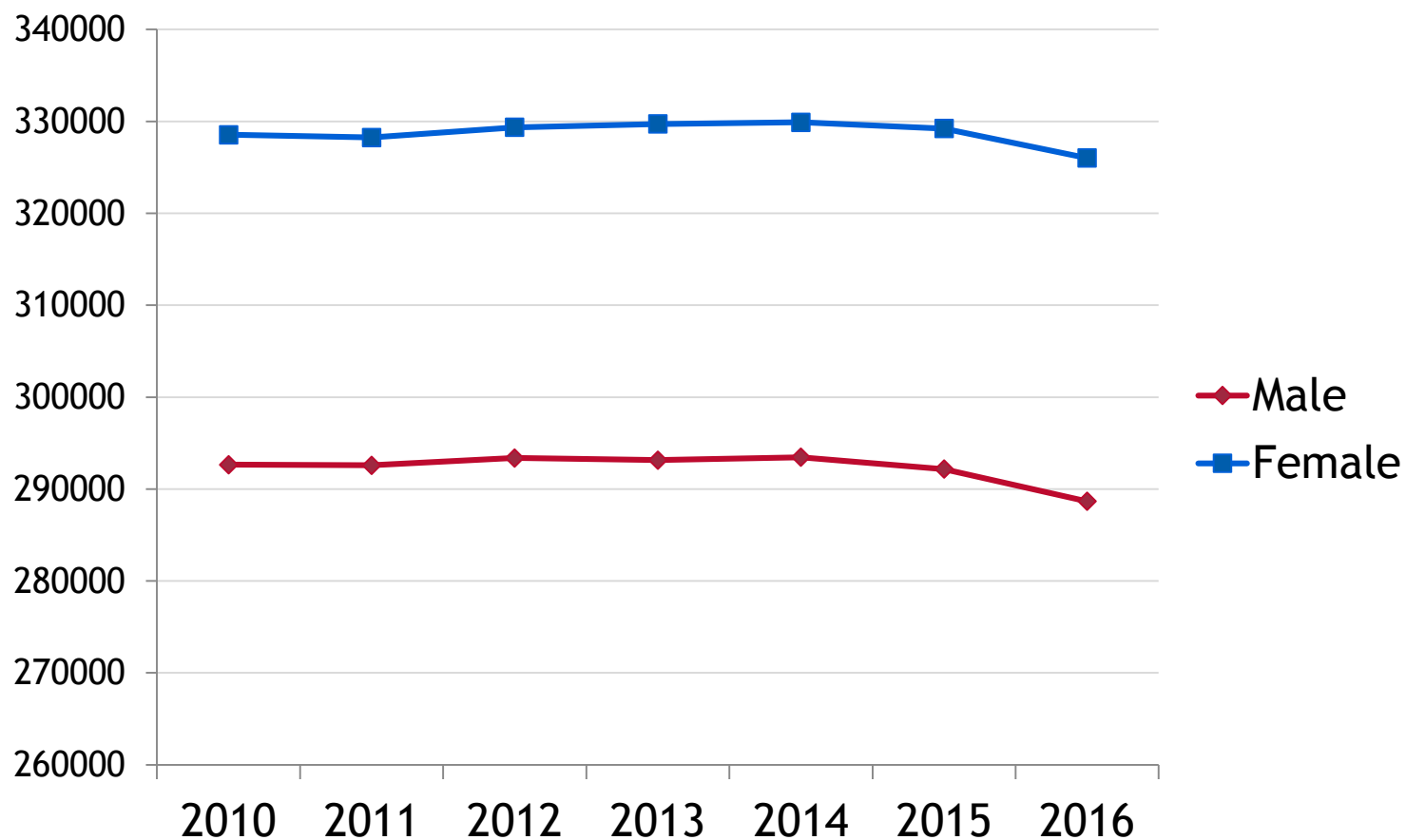
## Other PEP Components are 11% of the loss.



About 11% of Drop.



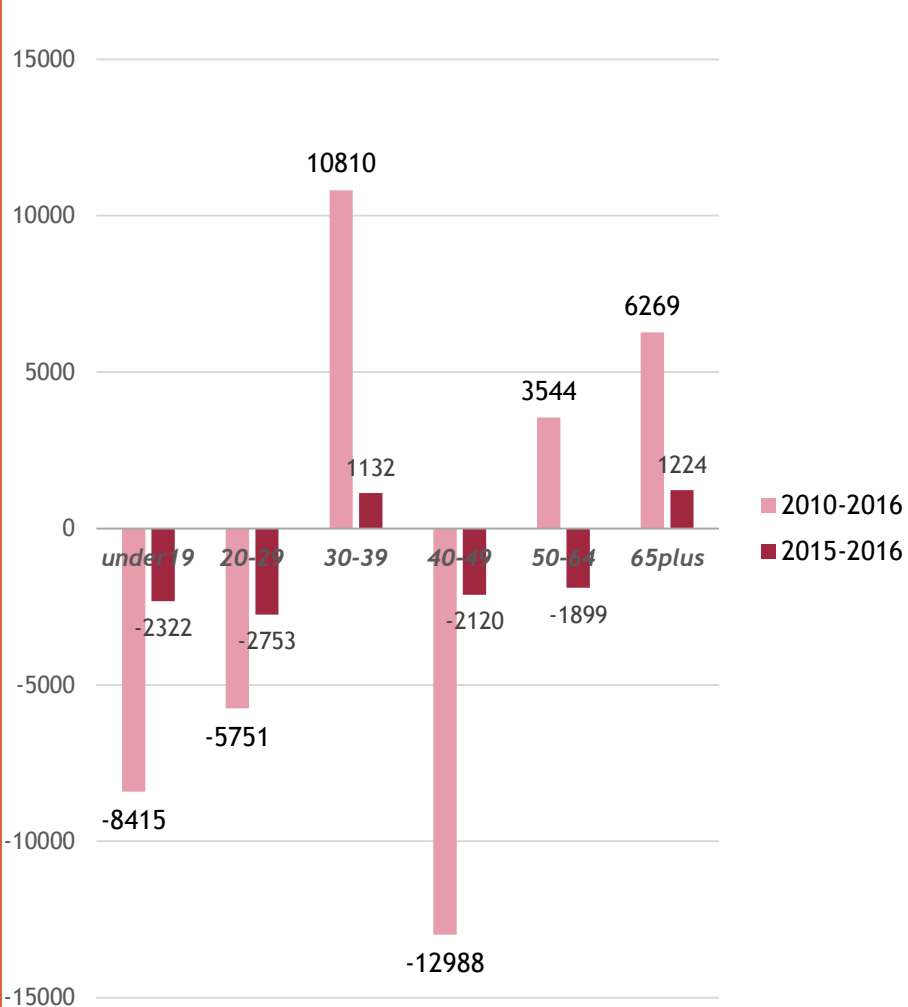
## Characteristics of Population Change: *Gender*



Source: Population Estimates Program, 2010-2016



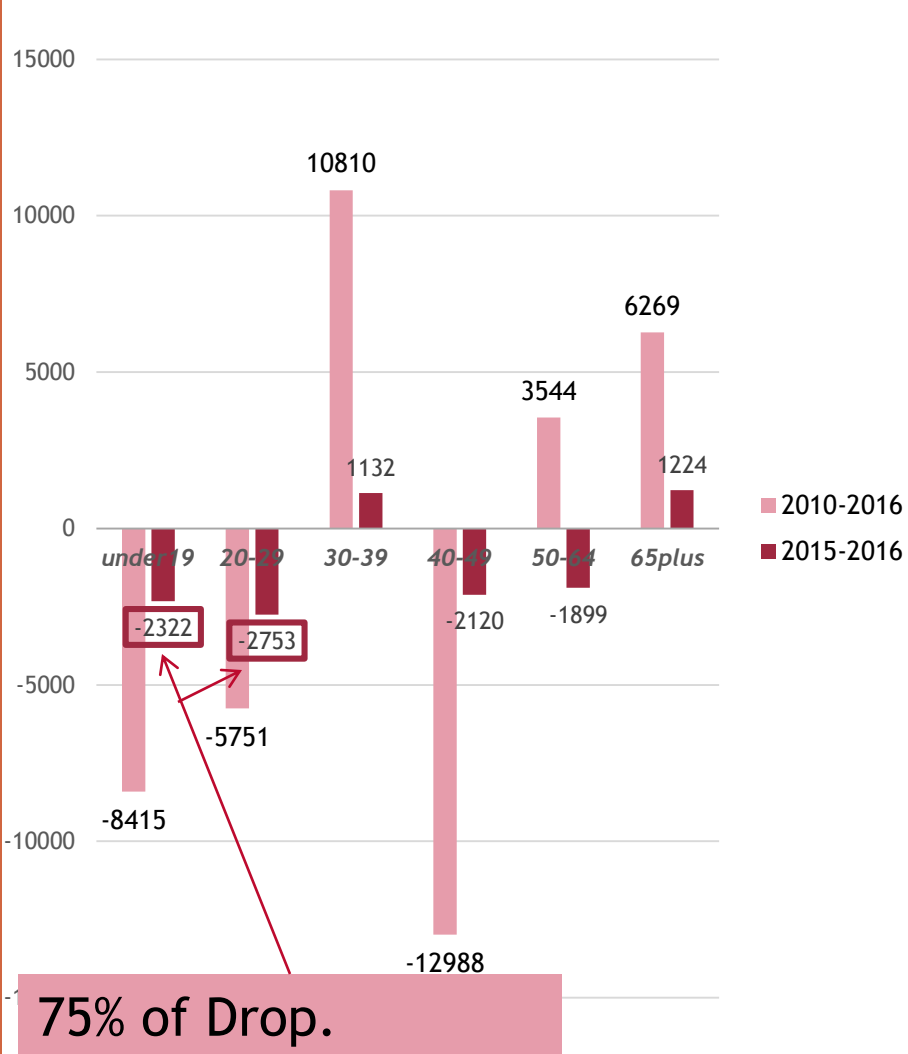
## Characteristics of Population Change: Age



Source: Population Estimates Program, 2010-2016



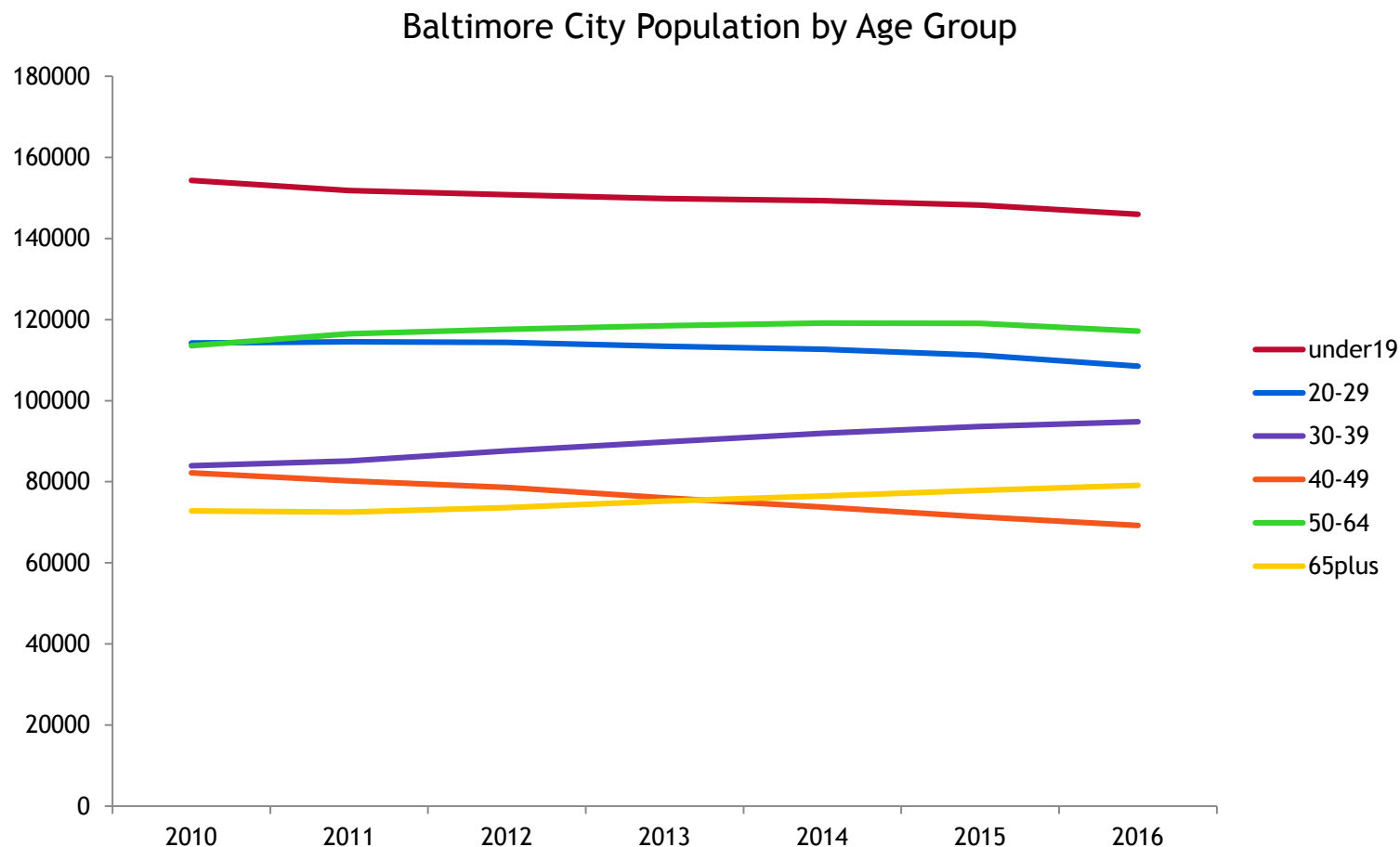
## Characteristics of Population Change: Age



Source: Population Estimates Program, 2010-2016



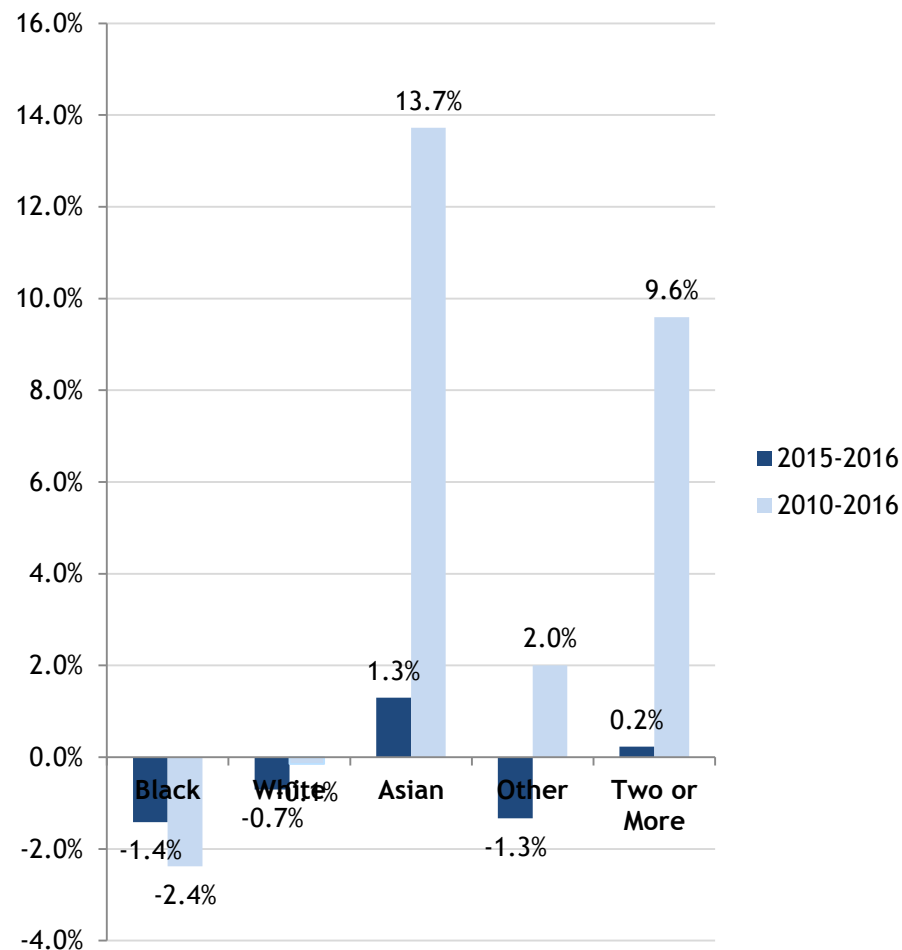
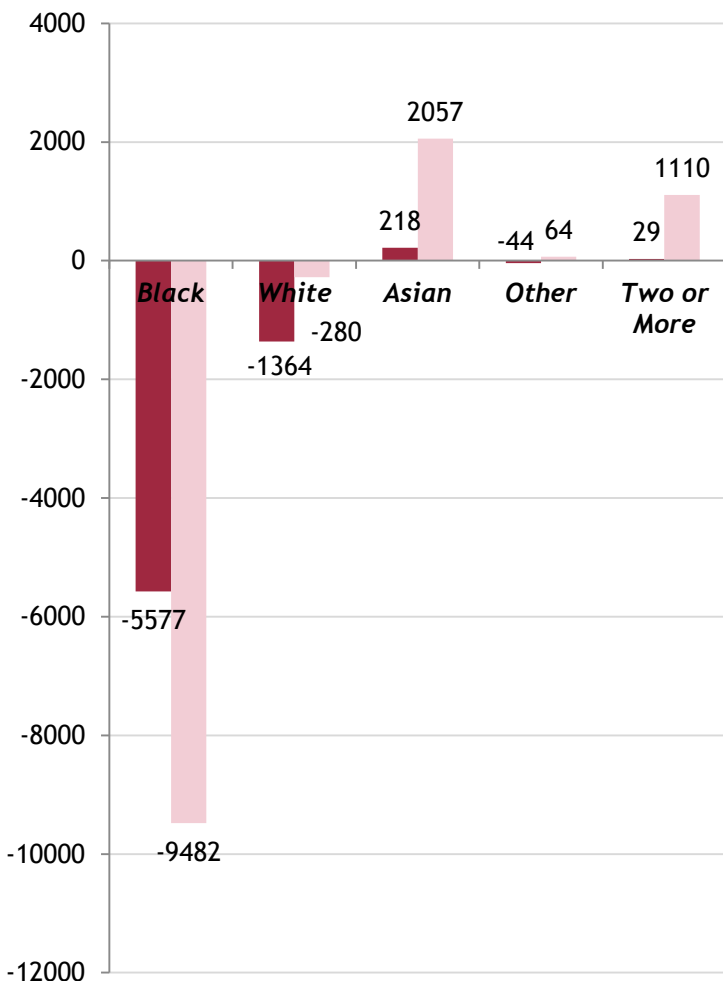
## Characteristics of Population Change: Age



Source: Population Estimates Program, 2010-2016



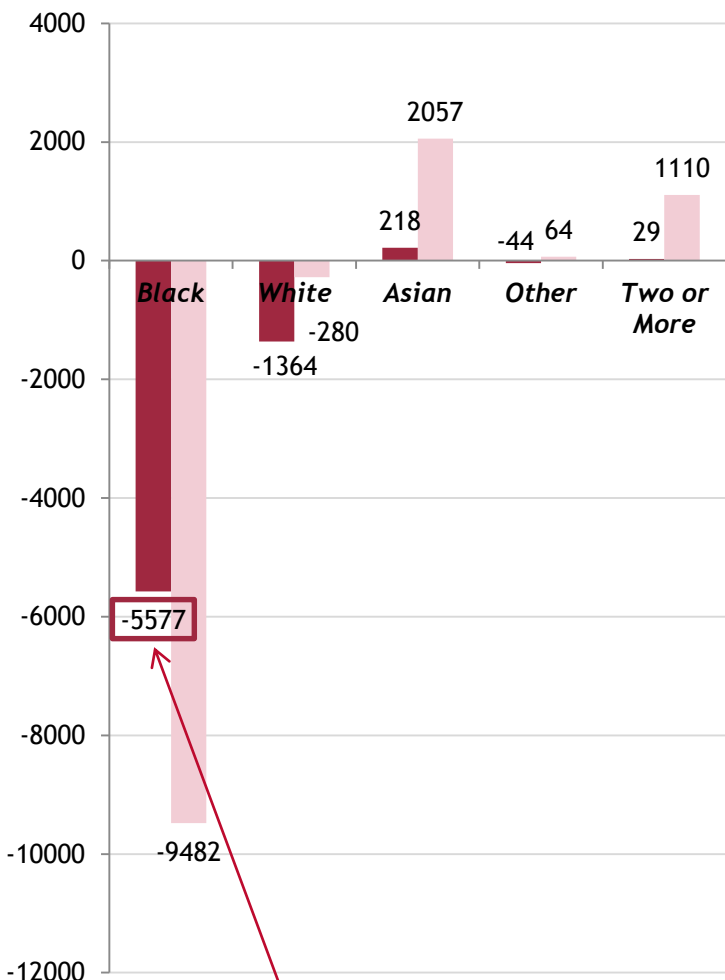
## Characteristics of Population Change: *Race*



Source: Population Estimates Program, 2010-2016

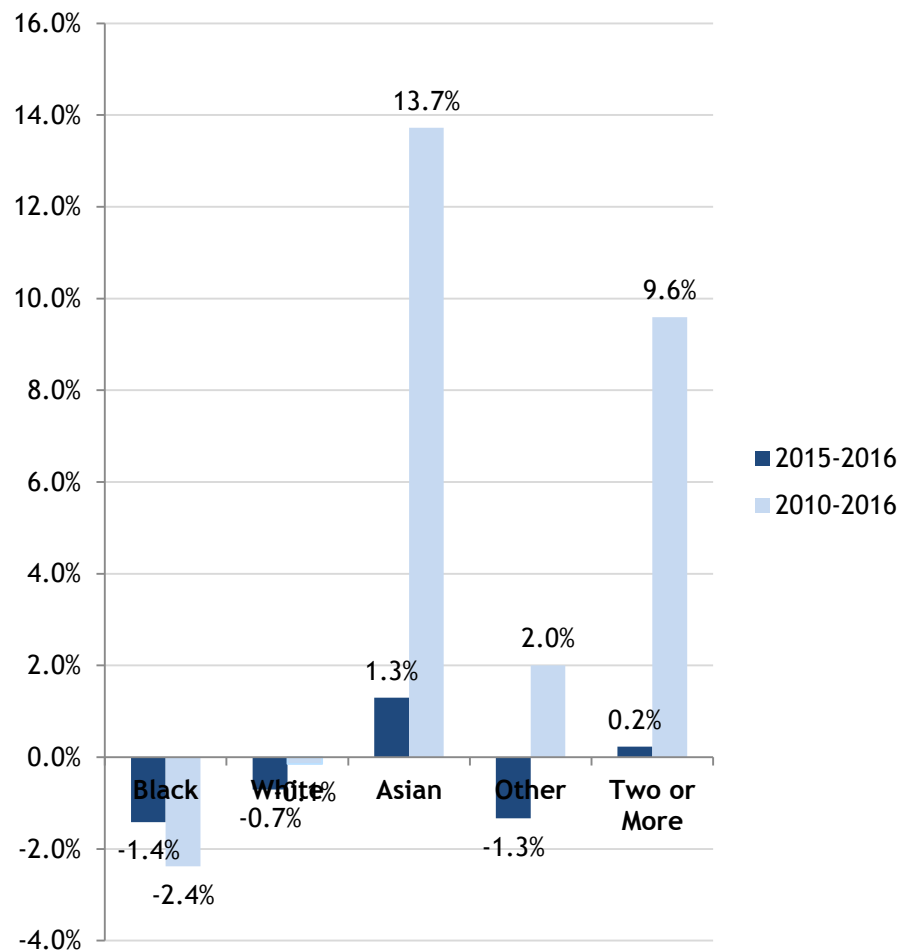


## Characteristics of Population Change: *Race*

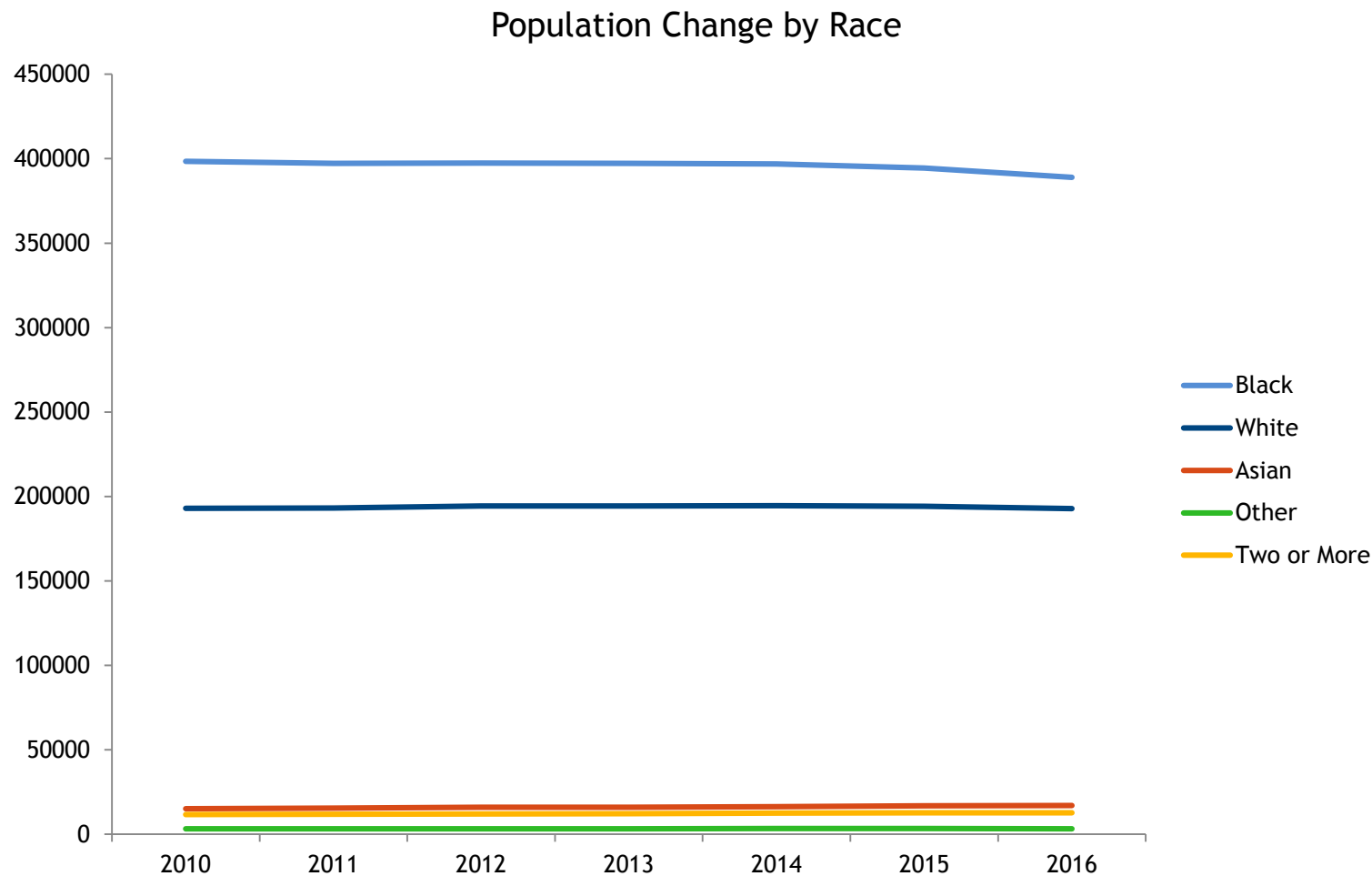


**82% of Drop.**

Source: Population Estimates Program, 2010-2016

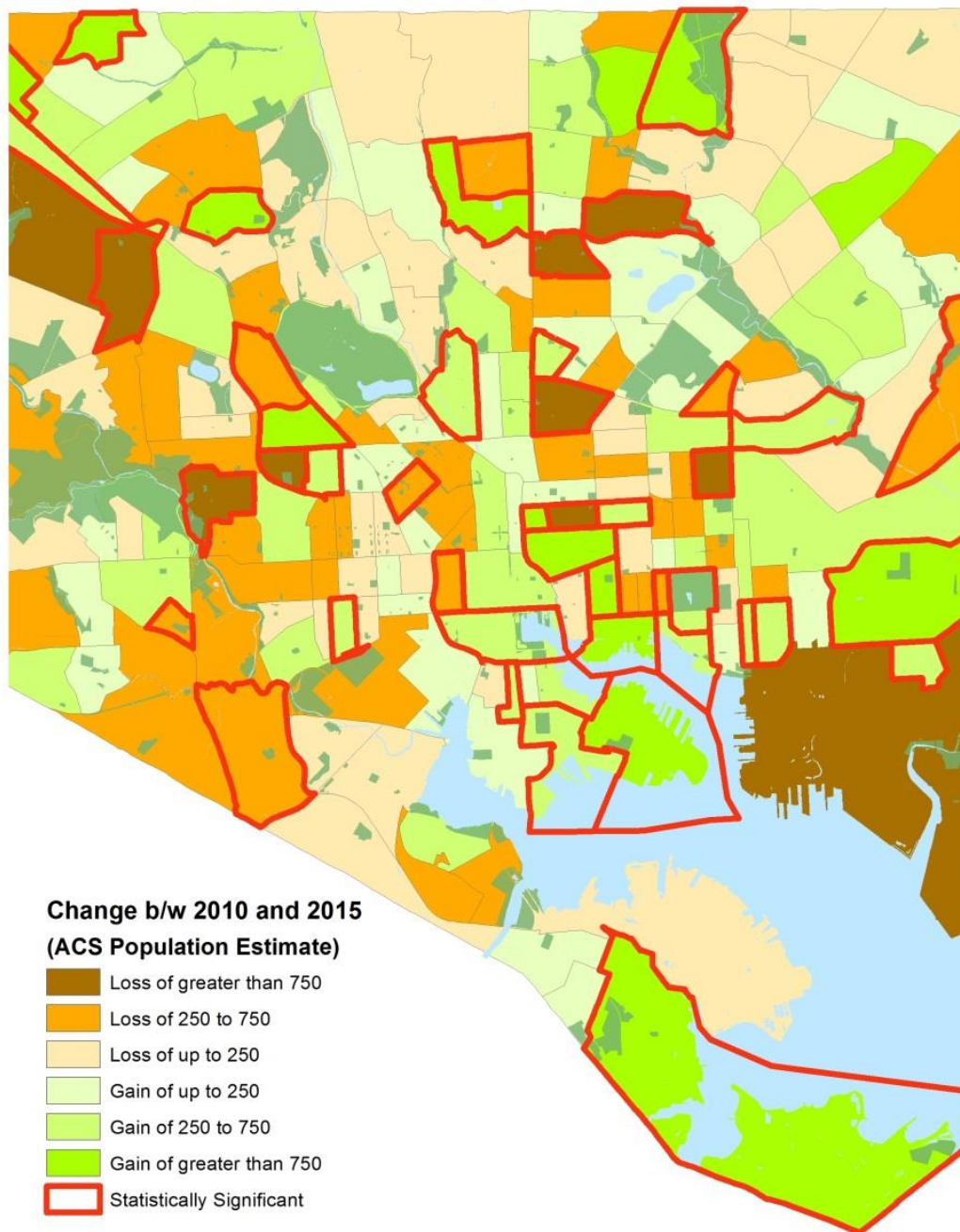


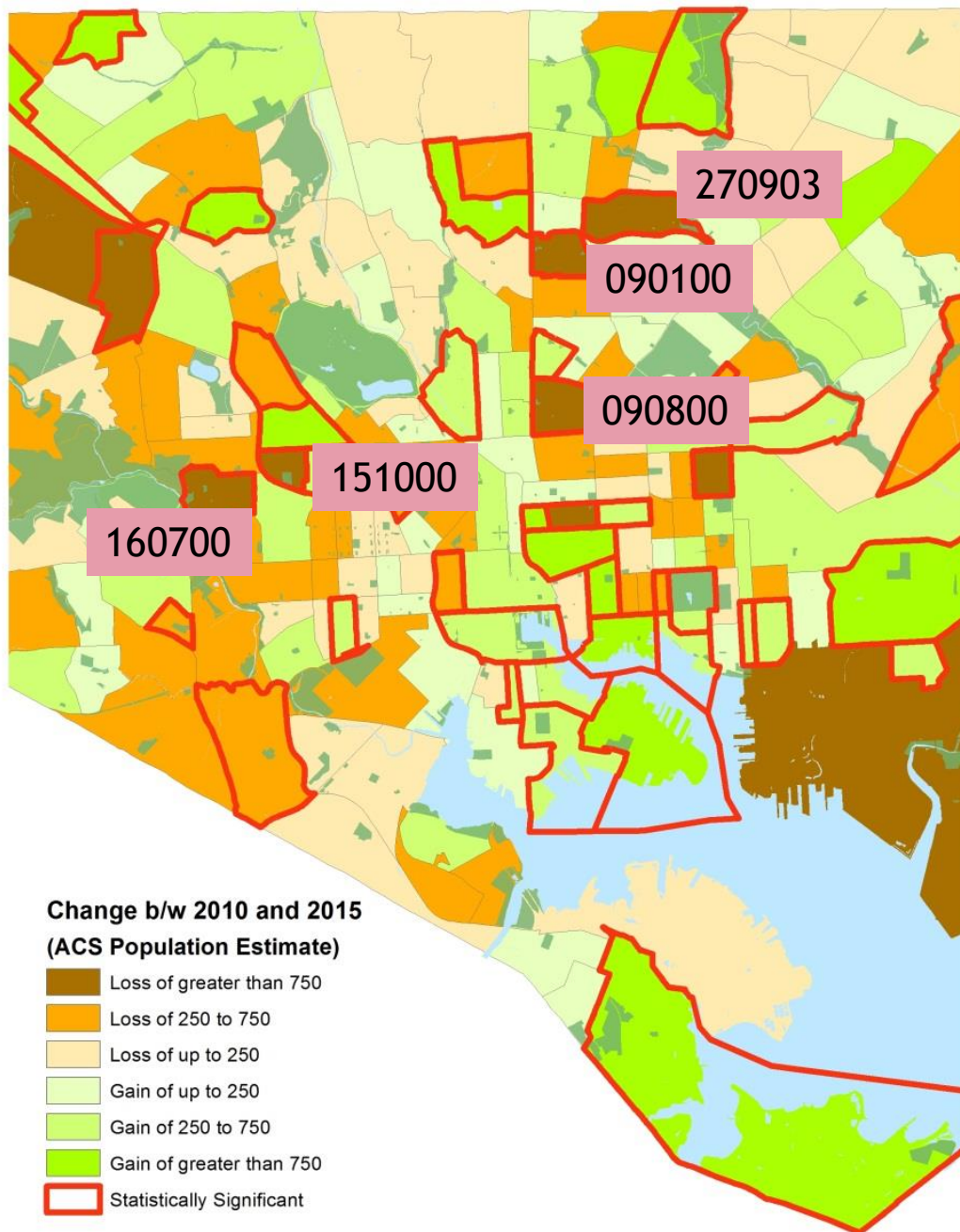
## Characteristics of Population Change: *Race*



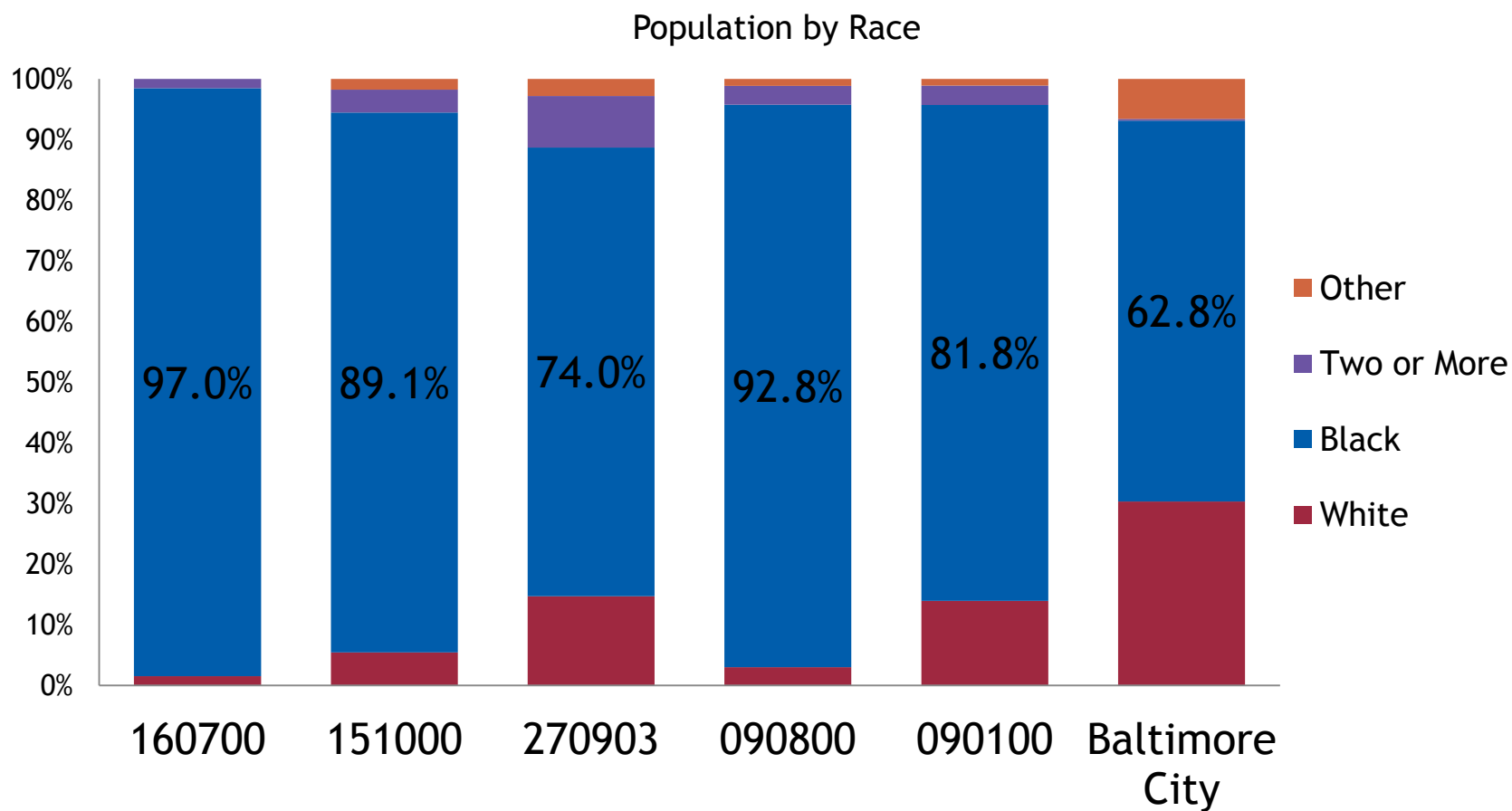
Source: Population Estimates Program, 2010-2016



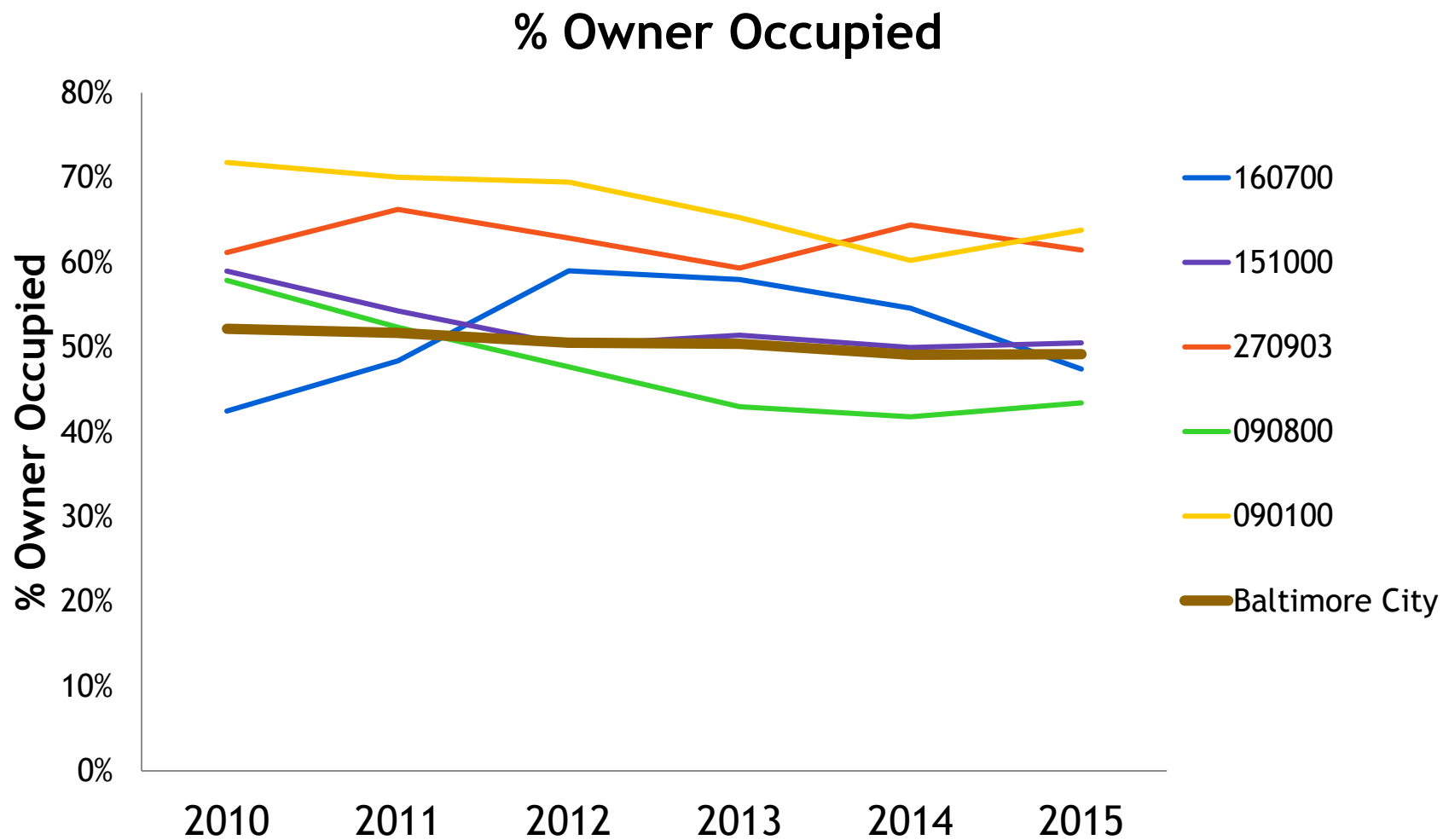




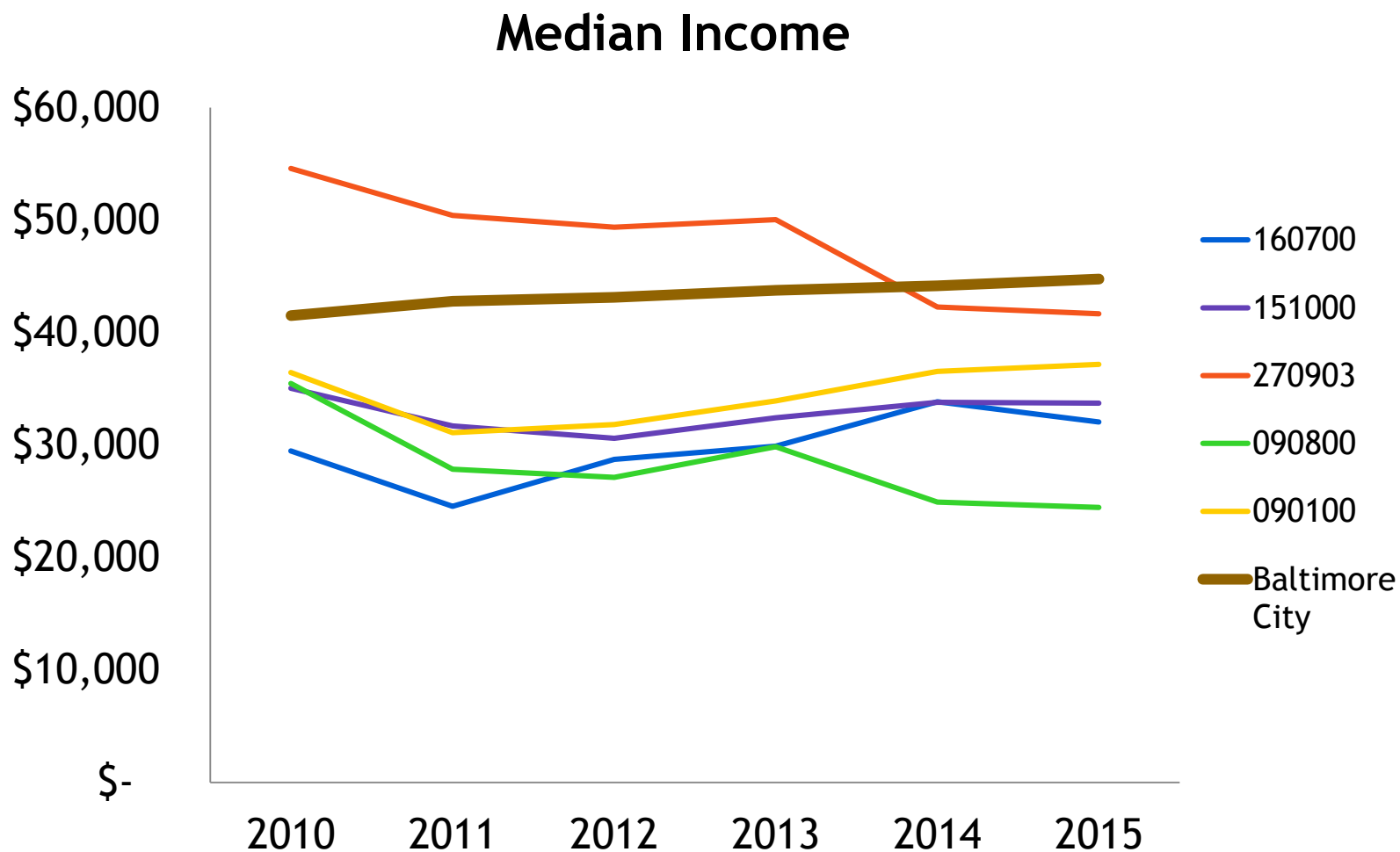
## Characteristics of Declining Tracts: *Predominantly African American*



## Characteristics of Declining Tracts: *Above Avg Owner Occupancy*



## Characteristics of Declining Tracts: *Lower Middle Income*



# Census Update

2016 PEP Estimate

Housing and Development Data

Investigating a Challenge to the PEP

Moving On: Nature of Population Change

Policy Implications



## Policy Implications

Families families families: schools, safety, housing stock.

Capture the millennials: amenities, urbanity.

Ensure growth isn't a "sugar high".

Examine middle income and "aging out" communities and target home ownership and elderly support.

*Probably a hundred other things as well.*



Thanks!



Robert F Pipik  
[Robert.pipik@baltimorecity.gov](mailto:Robert.pipik@baltimorecity.gov)

Baltimore City Department of Planning

37

