



**BR**TTC

BALTIMORE REGIONAL TRANSIT COMMISSION



**An Overview of Maryland's  
Transportation Trust Fund (TTF) and  
The Consolidated Transportation Program (CTP)**



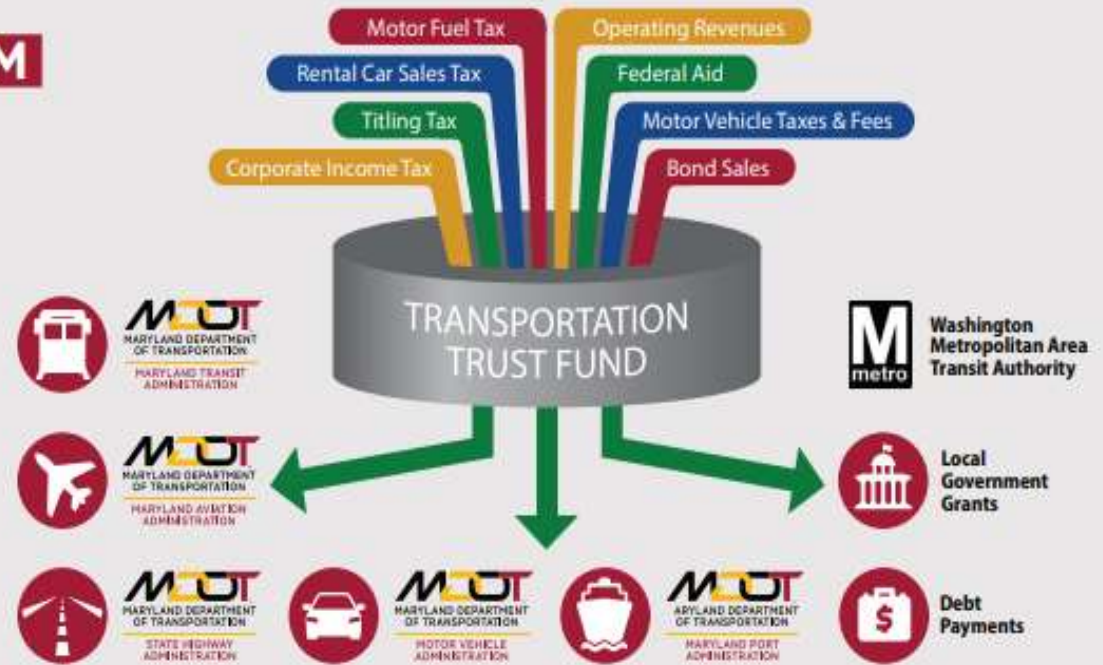


## What is the Transportation Trust Fund (TTF)?

- The Transportation Trust Fund (TTF) is a nonlapsing special fund that provides funding for transportation in Maryland
- The TTF was created in 1971 to establish a dedicated fund to support the Maryland Department of Transportation (MDOT) and its six business units
- The TTF allows Maryland to have flexibility and diversity in meeting its transportation needs and challenges

## WHERE THE MONEY COMES FROM

MDOT manages the State Transportation Trust Fund, which gives Maryland the flexibility to fund priority transportation needs that support a balanced statewide multimodal transportation system. This capability provides economic benefits to the entire State, creating jobs, expanding opportunities, and advancing transportation plans, program, and projects that will improve our transportation system and the quality of life Marylanders.



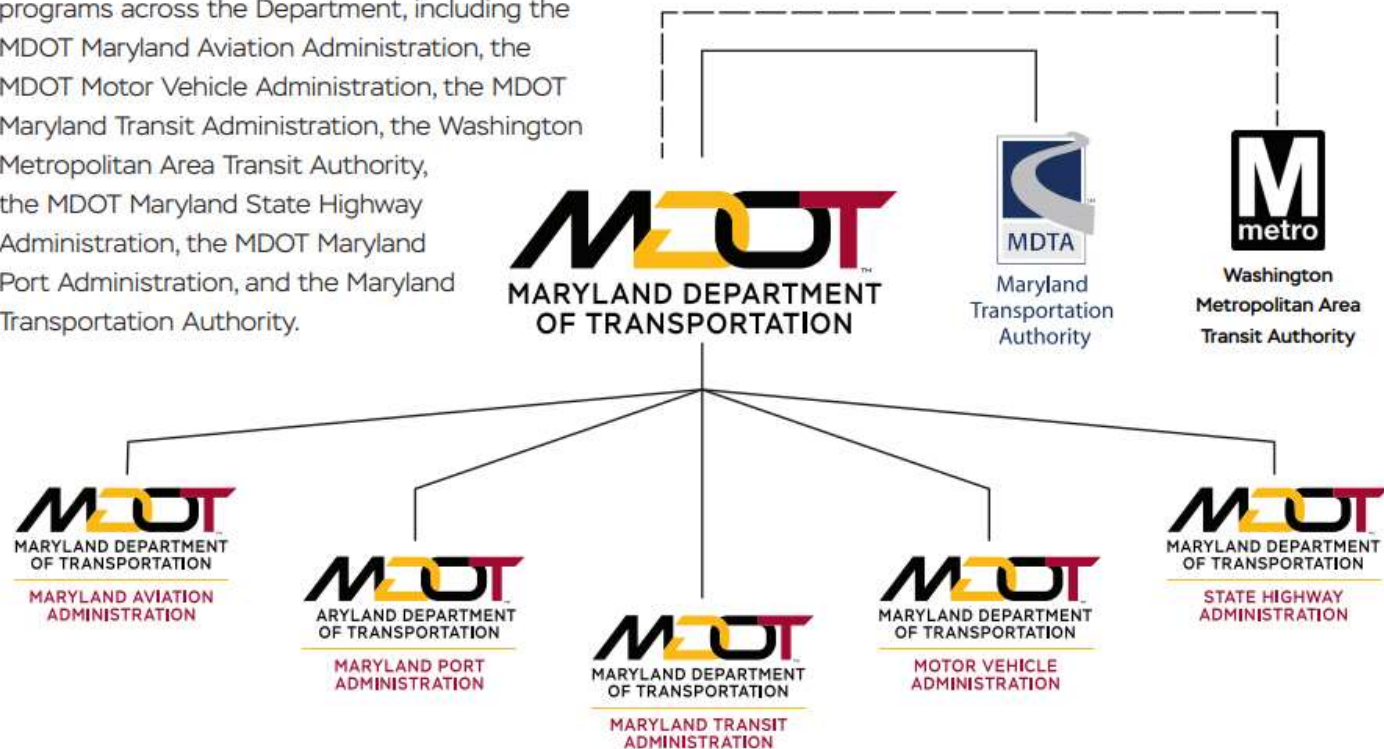


## TTF Summary

- The TTF receives revenues from various sources, such as
  - Motor Fuel taxes
  - Vehicle registration and titling fees,
  - Operating revenues
  - Federal aide
  - Bonding
  - Corporate income taxes,
  - Other sources
- The TTF is the primary source of funding for Maryland's transportation system
- The TTF faces several challenges, such as rising costs, declining revenues, aging infrastructure, and competing demands –TRAIN Commission examining

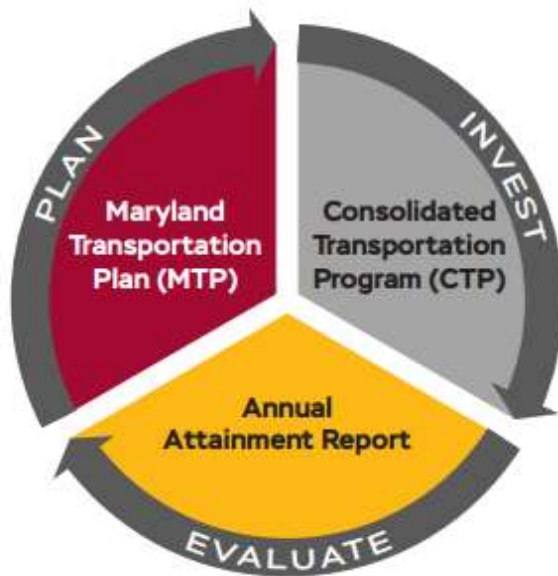
# Maryland's Consolidated Transportation Program (CTP)

The CTP is Maryland's six-year capital budget for transportation projects and a key part of the State Report on Transportation (SRT). The CTP contains projects and programs across the Department, including the MDOT Maryland Aviation Administration, the MDOT Motor Vehicle Administration, the MDOT Maryland Transit Administration, the Washington Metropolitan Area Transit Authority, the MDOT Maryland State Highway Administration, the MDOT Maryland Port Administration, and the Maryland Transportation Authority.



# What is Maryland's State Report on Transportation?

The MDOT State Report on Transportation is a State legislatively required annual report on transportation, submitted each year on the third Wednesday in January to the Maryland General Assembly. It contains three important documents: the Maryland Transportation Plan (MTP), the Consolidated Transportation Program (CTP), and the annual Attainment Report (AR) on Transportation System Performance.



## PLAN

*The MTP is MDOT's long-range vision for transportation.*

## INVEST

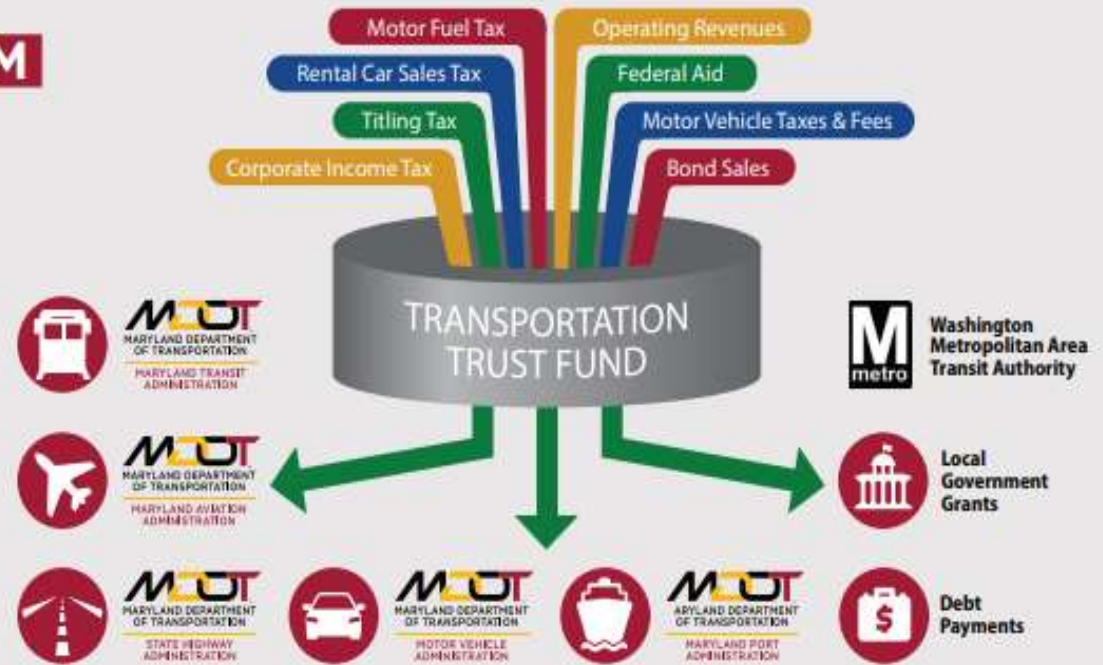
*The CTP presents detailed listings and descriptions for the capital projects proposed for construction or development and evaluation.*

## EVALUATE

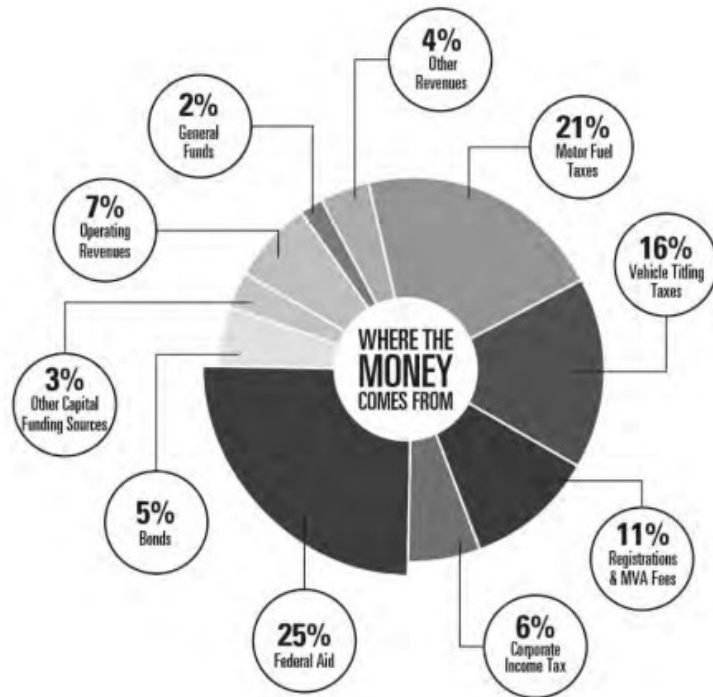
*The annual **Attainment Report on Transportation System Performance** evaluates and reports on the performance of Maryland's transportation system, focusing on the goals adopted in the MTP.*

## WHERE THE MONEY COMES FROM

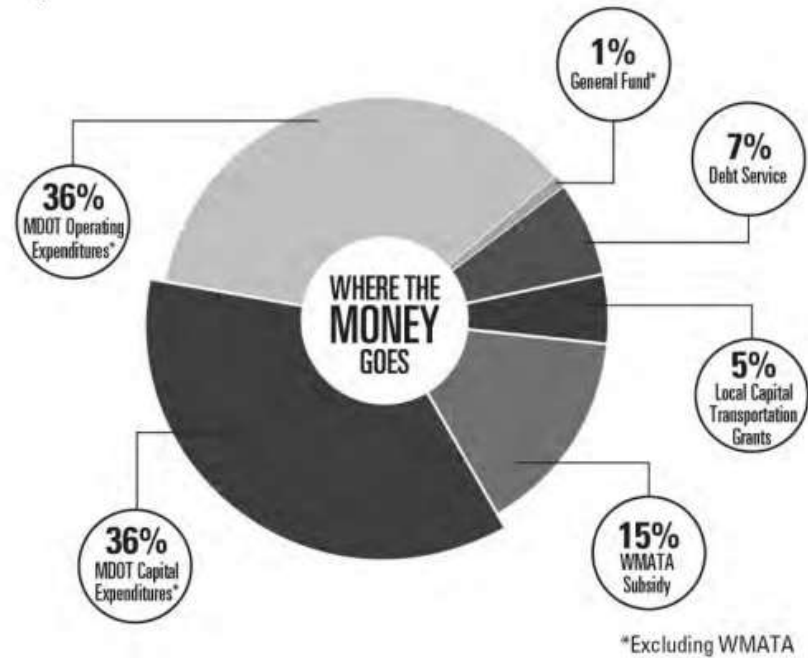
MDOT manages the State Transportation Trust Fund, which gives Maryland the flexibility to fund priority transportation needs that support a balanced statewide multimodal transportation system. This capability provides economic benefits to the entire State, creating jobs, expanding opportunities, and advancing transportation plans, program, and projects that will improve our transportation system and the quality of life Marylanders.



# SOURCES:



# USES:





## MDOT Capital Program Process

Month	CTP Development Step	Engagement Step	Legislative Deadline
May (2023)	CTP Project Requests	County Priority Letters	
June	CTP Allocations		
July			
August			
September	Draft CTP	Fall CTP Tour to all counties and Baltimore City	Nov 1 - Pre-Filed Bills Due
October			
November	Prepare Final CTP		
December			
January (2024)	Legislative Review of CTP		January 1 – Commission Report Due January 10 – Legislative Session Starts January 17 – CTP Due
February			
March			
April			



## CAPITAL PROJECTS AND PROGRAMS



Planning



Environmental  
Studies



Design



Right-of-Way  
Acquisition



Construction



Asset  
Procurement

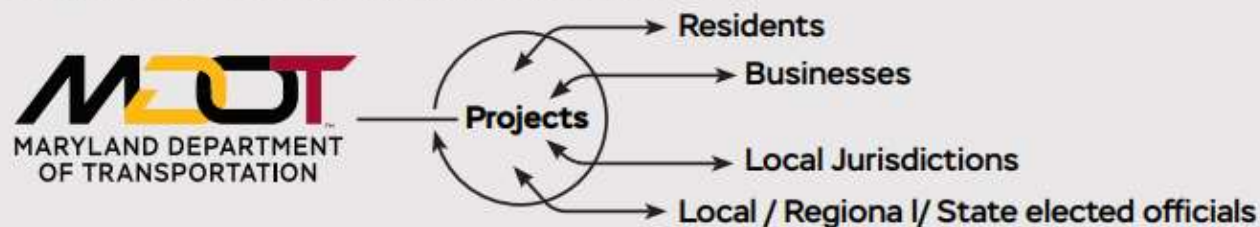
### CTP CRITERION EVALUATION

The MDOT uses the following criteria to identify projects and programs that align with the State's transportation priorities.

- ➔ Meets all federal and other legal mandates (e.g. Total Maximum Daily Load compliance, Positive Train Control, Federal Aviation Administration regulations to maintain airport permits)
- ➔ Supports the Department's mission, program priorities and Maryland Transportation Plan goals (safety, system preservation, economic development, etc.)
- ➔ Meets all federal match requirements to maximize federal revenue sources
- ➔ Supports the State's plans and objectives
- ➔ Supports existing project commitments and upholds intergovernmental agreements
- ➔ Is the single top priority within a local priority letter
- ➔ Is consistent with local plans
- ➔ Is included in the regional Metropolitan Planning Organization long-range plan (if the project is located within an MPO boundary).

## CTP COORDINATION AND INPUT

MDOT works extensively with residents, businesses, local jurisdictions and local / regional / State elected officials to include projects in the CTP that preserve investments, enhance transportation services and improve accessibility throughout the State. The CTP takes nearly a full year to create.



**// APRIL //**

Counties submit their Priority Letters

- ▶ Priority letters should be endorsed by the commissions/council (and/or county executive), as well as the local legislative delegation.
- ▶ Metropolitan Planning Organizations' constrained long-range plans.

**// SEPTEMBER //**

Draft CTP published online; Secretary participates in annual County tour meetings

- ▶ Draft CTP provided to public for review

**// JANUARY //**

Final CTP published online; Secretary presents CTP in budget hearings in Legislature

- ▶ Final CTP provided to public for review

**// MARCH //**

Final CTP approved after Legislative session

- ▶ After extensive consultation with Maryland's citizens, local jurisdictions and the local and State delegations, MDOT advances projects in the CTP that preserve transportation system investments and safety, enhance transportation services and connections and expand transportation opportunities throughout the State.



## For more info:

**Don Halligan** | Senior Transportation Planner  
410-732-0500, ext 1002 | [dhalligan @baltometro.org](mailto:dhalligan@baltometro.org)