

PUBLIC INVOLVEMENT REPORT

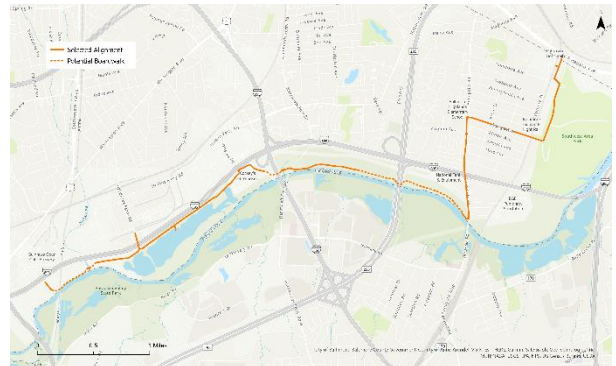
NOVEMBER 2023

★ OPEN COMMENT PERIODS ★

HELP SHAPE THE FUTURE OF THE PATAPSCO REGIONAL GREENWAY

In 2017, the Baltimore Regional Transportation Board (BRTB) approved a plan for the Patapsco Regional Greenway (PRG). The PRG will be a 40-mile trail running through the Patapsco Valley from the Baltimore Inner Harbor to Sykesville in Carroll County. The PRG will be used by bicyclists, walkers, runners and (in some places) wheelchair users and equestrians. Over 12 miles of the greenway have already been completed.

Now, we want to hear from you about a proposed 5.5 mile trail from Guinness Open Gate Brewery to the Southwest Area Park in Baltimore County. We listened to public input on where the trail should go and now we'd like you to help us with what kinds of amenities would make a great trail. The design of the trail will make it safe and comfortable for pedestrians and bicyclists.



Comments are welcome through **December 5, 2023**. The public can share comments at the public meeting, by text, via voicemail, on the project webpage, and the survey and interactive map on the project StoryMap.

Visit publicinput.com/PRG to learn more

★ UPCOMING COMMENT PERIODS ★

Upcoming UPWP activities that will be seeking public engagement in FY 2024 include: the Vision for a Regional Bicycle Network, PRG: Stoney Run segment, a review of transportation Fares, Fees, and Fines, and several more. Additionally there will be a comment period for a spring federal certification review of the Baltimore region transportation planning process.

★ BRTB MEMBER INITIATIVES ★

MTA SEEKS PUBLIC COMMENT ON GOALS FOR MARC TRAIN SERVICE

The Maryland Transit Administration (MDOT MTA) is seeking public input on the development of goals for the Maryland Area Regional Commuter (MARC) service.

The agency is seeking the public's help in redefining the vision and goals of the MARC train system so that it meets the needs of all Marylanders. The study area includes the existing MARC Train service area and potential extensions to Delaware, Virginia, and West Virginia.

The results of this survey will help shape the future of MARC train service. Feedback will be used to create the MARC Growth and Transformation Plan to include an updated set of strategies and projects.

Take the [survey today](#).

Para completar [la encuesta en español](#), selecciona aquí.

★ BMORE INVOLVED ★



BMC publishes a monthly newsletter called Bmore Involved, which features articles about how the public can be engaged at the regional, state, and local level.

To sign up, visit publicinput.com/Portal/J5348.