



Anne Arundel County Transportation Center Feasibility Study



BRTB Meeting
May 1, 2020
9:45 a.m.



Anne Arundel County



BACKGROUND

- There are a number of services operated by MDOT MTA and the LOTS services - Anne Arundel County, Annapolis Transit, RTA - that serve common locations.
- Short- and long-range plans call for more services that will need to have convenient connections to form a usable County-wide network.
- Anne Arundel County has included an Annapolis/ Parole Intermodal Facility as the #3 Transit Priority in its FY 2019 Priority Letter to MDOT.
- Study purpose is to:
 - Recommend best location
 - Provide conceptual layout

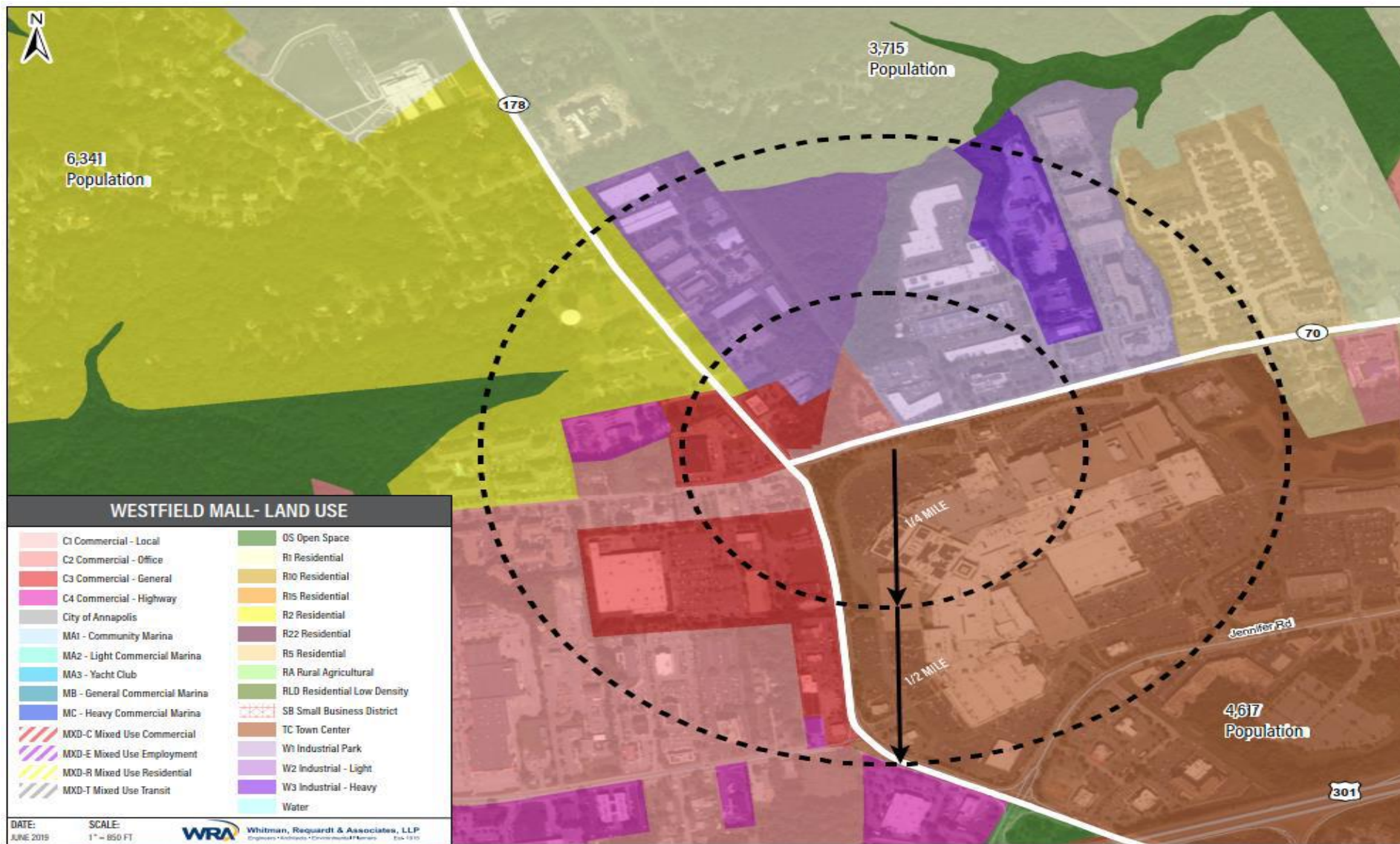


SITE SELECTION

	Westfield Mall	Harry S. Truman
Zoning	Town Center District	Commercial Office, General Commercial
Use Adjacent Properties	Retail, Business, Residential	Business, Residential
Facility Design		
Bus Circulation	Bestgate Rd and Mall Ring Road	On Site
Building	3,000 SF	5,000 SF
TNC/Mobility	Yes	Yes
Parking Capacity	58 varies	800
Bus Bays	10	12
Bike Storage	Yes	Yes
Expansion Potential	Yes	Yes
Bus Routes		
Pass Through	5	7
Terminal	5	None
Additional Bus Miles	492	1,546
Site Access		
Walking	300' from Mall	792' from Truman Parkway
Bicycling	On Road	On Road
Safety	Crosswalks at major intersections	Crosswalks at Riva Rd.
Vehicle Access	Generals Highway, Bestgate Rd, Jennifer Road	Harry S. Truman Parkway, Riva Road
Site Considerations		
Environmental	None	None
Community	Access 1/4 mile	No direct access



WESTFIELD MALL-TOD

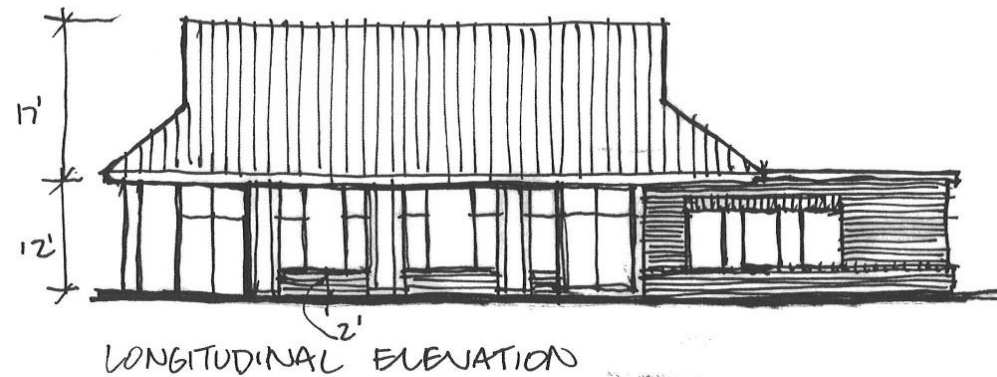
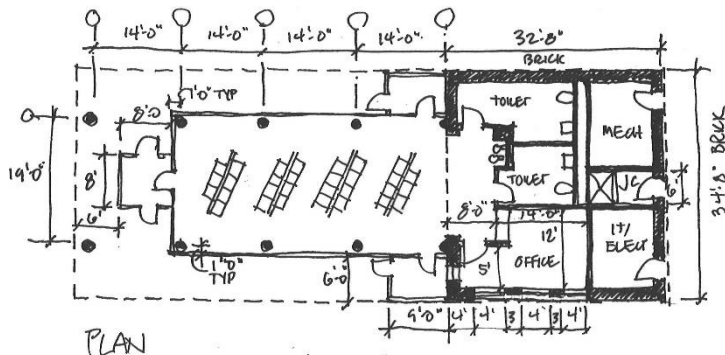


HARRY S. TRUMAN PARK & RIDE-TOD



BUILDING CONCEPT

- Interior waiting
 - 30 to 40 customers
 - Restrooms
 - Customer service office
 - Approximately 2,500 square feet



ANNE ARUNDEL TRANSIT
1/16" = 1' 0" 10.22.19



WESTFIELD MALL

LEGEND

- 55 IMPACTED PARKING SPACES
- 58 PROPOSED PARKING SPACES
- 10 BUS BAYS
- TRANSIT SERVICE BUILDING
- RIGHT OF WAY
- [Pattern] SIDEWALK/WAITING AREA
- [Pattern] FULL DEPTH CONCRETE
- [Pattern] FULL DEPTH ASPHALT
- [Pattern] ASPHALT REMOVAL



WESTFIELD MALL

ANNAPOLIS TRANSIT CENTER
BALTIMORE METROPOLITAN COUNCIL BMC

WESTFIELD MALL - PLAN



WESTFIELD MALL

ANNAPOLIS TRANSIT CENTER
BALTIMORE METROPOLITAN COUNCIL BMC

WESTFIELD MALL - PERSPECTIVE



HARRY S. TRUMAN PARK & RIDE



HARRY S. TRUMAN PARK & RIDE

ANNAPOLIS TRANSIT CENTER
BALTIMORE METROPOLITAN COUNCIL BMC

HARRY S. TRUMAN PARK AND RIDE - PLAN



HARRY S. TRUMAN PARK & RIDE

ANNAPOLIS TRANSIT CENTER
BALTIMORE METROPOLITAN COUNCIL BMC

HARRY S. TRUMAN PARK AND RIDE - PERSPECTIVE



NEXT STEPS

- **Refine plan details**
- **Continue to engage stakeholders**
- **Include Annapolis Transit Center concept plan in Anne Arundel County's Parole Growth Management Plan**
- **Identify and secure funding for**
 - Preliminary design
 - Engineering
 - Construction





Thank You!

