



---

# Transportation Alternatives Applications

Resolution #20-5

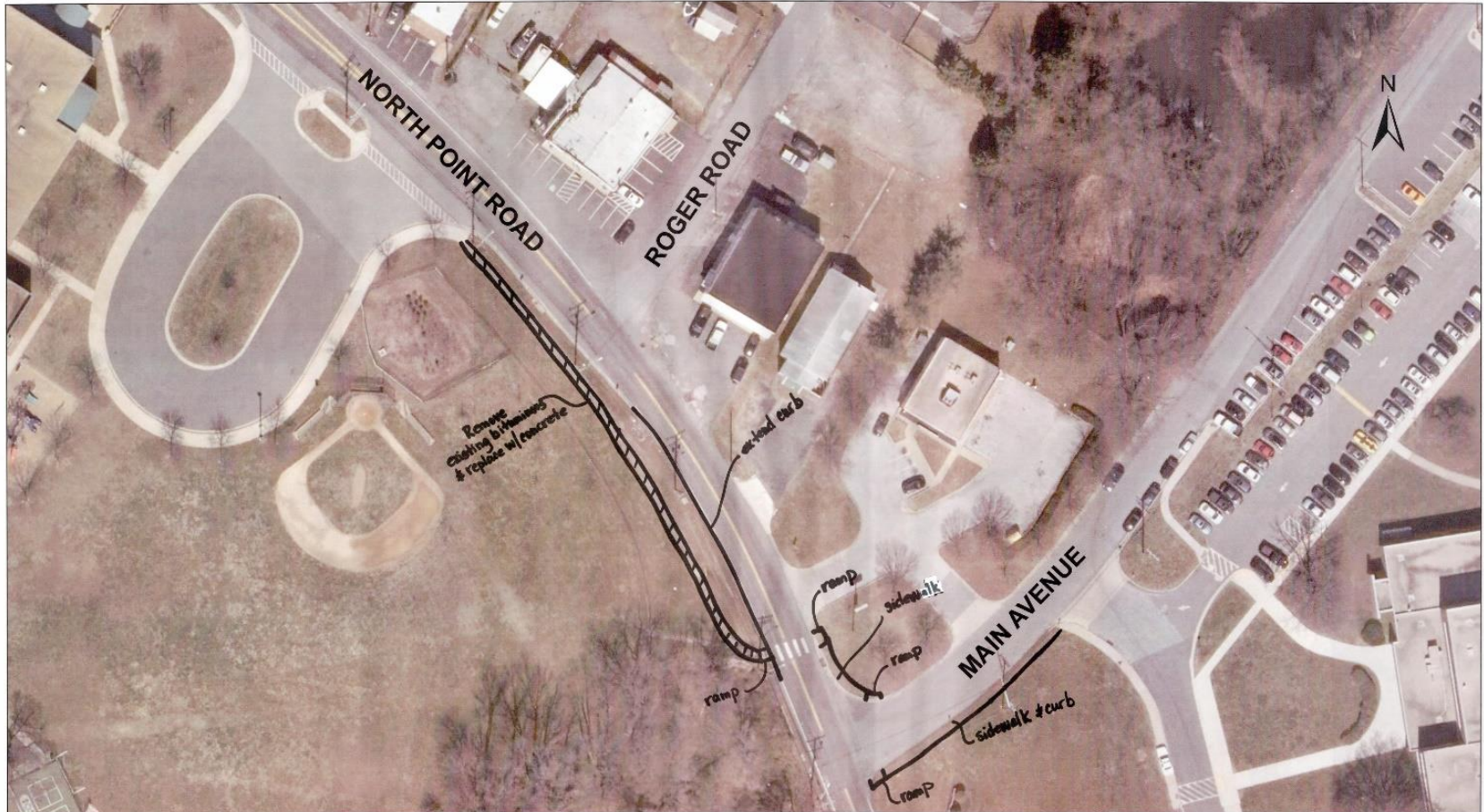
July 2019



# TA Program Applications

- **MDOT SHA Call for Projects – Due mid May**
- **MDOT SHA and BMC Reviewed Applications**
- **Funds Available:**
  - **Baltimore region:**
    - \$2,138,046 available in FY 2020
    - 3 applications received totaling \$2,980,000 in requests
  - **Aberdeen/Bel Air South/Bel Air North:**
    - \$207,386 available
    - No applications received

# Pedestrian Improvements and Connections at Edgemere ES and Sparrows Point MS/HS (Baltimore County)



Publication Date: 5/10/2019  
Publication Agency: Department of Public Works  
Projection/Datum: Maryland State Plane,  
FIPS 1900, NAD 1983/91 HARN, US Foot



1 inch = 30 feet

# Pedestrian Improvements and Connections at Edgemere ES

- The **purpose** of the project is to replace an existing macadam sidewalk along the Edgemere Elementary School property. The existing surface is broken and uneven in many spots and at the low point where it crosses North Point Road it often remains flooded. The walkway system will now be wider and further improved by completing the connection across North Point Road with accessible ramps and installation of sidewalks. The goal of the project is to improve walking conditions and create ADA access for all the students that walk to and from all three schools that this connection serves (Edgemere Elementary School, Sparrows Point Middle School and Sparrows Point High School).

# Pedestrian Improvements and Connections at Edgemere ES and Sparrows Point MS/HS

- The **scope** of the project is to remove the existing, narrow macadam pathway and install a wider concrete sidewalk with curb and gutter. The existing concrete sidewalk and curb and gutter terminate just past the entrance to the elementary school at North Point Road.
- By continuing the concrete walk, curb and gutter down to the pedestrian crossing at North Point Road, the improvements will create a more ADA accessible route and prevent further flooding and deterioration of the walking conditions.
- In addition to the replacement along the west side, curb ramps and additional sidewalks and crossings on the east side of North Point Road will provide a clear delineated pathway towards Sparrows Point Middle and High Schools further improving pedestrian safety on a highly traveled vehicular arterial road.

# Bus Stop Accessibility Upgrade at Rail Stations (MDOT MTA)



# Bus Stop Accessibility Upgrade at Rail Stations



# Bus Stop Accessibility Upgrade at Rail Stations

- The **purpose** of this project is to improve pedestrian accessibility to intermodal bus stop locations throughout the City and allowing a safer connectivity between bus and rail services. The existing locations were identified as non-ADA compliant during a recent agency field inventory. The goal is to provide safer pedestrian access to bus stops of the BaltimoreLink Local Bus system by upgrading five locations to meet ADA guidelines.

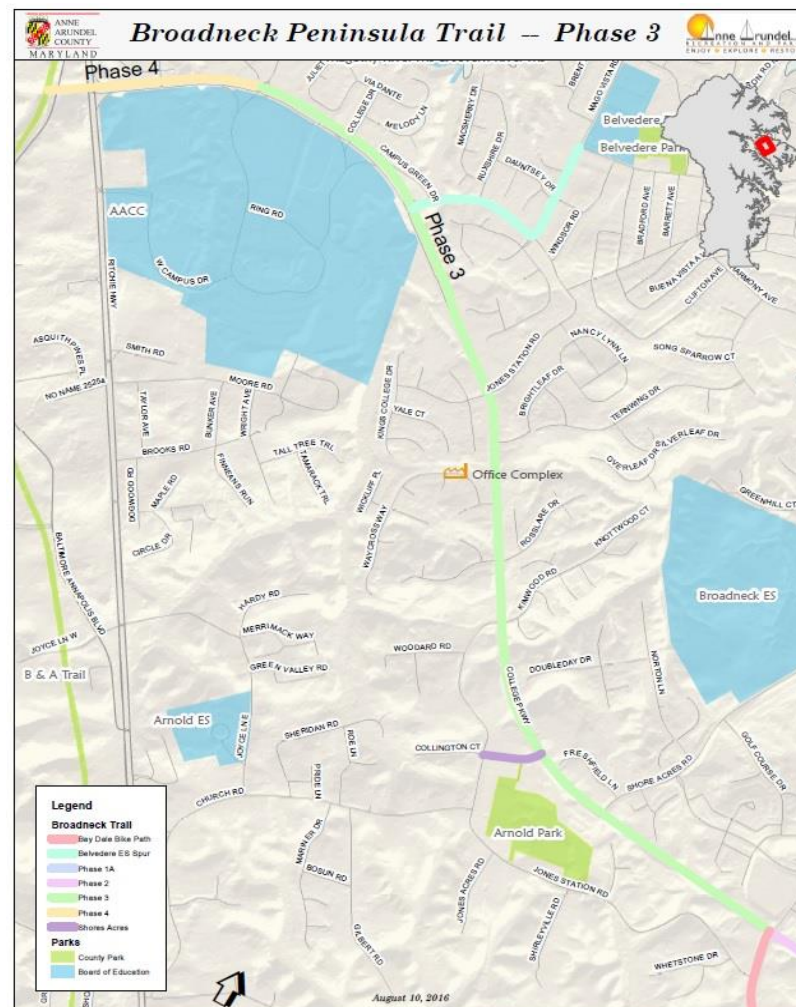
# Bus Stop Accessibility Upgrade at Rail Stations

- The project **scope** will include the design and construction needed to upgrade the boarding and alighting area at five MDOT MTA bus stops to meet ADA guidelines. The design phase will use existing field measurement information, MDOT MTA Bus Stop Standard Drawings, and MDOT MTA Typical Accessibility Upgrade Drawings to create bid documents including plans, specifications, and corresponding cost estimate.
- The construction phase will include the reconstruction of the existing sidewalks and curbs to meet ADA regulations at the boarding and alighting area. Additional sidewalk and curb work will take place in order to tie into existing conditions for each bus stop.

# Broadneck Peninsula Trail Phase III



- Construction of a 10' wide multi-use trail from Peninsula Farm Road to Bay Dale Drive
- Federal request: \$2,600,000 for construction



# Broadneck Peninsula Trail Phase III

- The **purpose** of the Broadneck Peninsula Trail - Phase III project is to continue progress by connecting to Phase II which began construction April 2018. Phase II is a 1.24 miles section from Green Holly Drive to Bay Dale Drive. Phase Ib which opened in 2013 connects Green Holly to Old Cape St. Claire Road, for a distance of 1.15 miles.
- Trail users will have access to Bay Hills Shopping Center, multiple residential areas and Anne Arundel Community College. Additionally, bicyclists and pedestrians will be able to reach the B&A Trail and the MDOT MTA Park-and-Ride lot by way of a route along Jones Station Road. This trail will ultimately reach Sandy Point State Park and is a linkage in the American Discovery Trail stretching from Delaware to California.

# Broadneck Peninsula Trail Phase III

- The **scope** of this project is an ADA compliant 10-foot wide paved multi-use trail along with appropriate stormwater management and landscaping. This 2.47 mile phase includes several retaining walls, two boardwalks, fencing, five crossings where the trail transitions to the southern side of College Parkway, connects to the community college and several communities providing a safe path to access the trail.

# For more information

---

**Regina Aris** | Assistant Director - Transportation Planning

410-732-9572 | [raris@baltometro.org](mailto:raris@baltometro.org) | [www.baltometro.org](http://www.baltometro.org)



@BALTOMETROCOUNCIL



@BALTIMORE METROPOLITAN COUNCIL



@BALTIMORE METROPOLITAN COUNCIL

