



BALTIMORE CITY
DEPARTMENT OF
TRANSPORTATION

COMPREHENSIVE TRANSPORTATION PLAN

THE ROLE OF BALTIMORE CITY DOT



The Department of Transportation provides the City of Baltimore with a comprehensive and modern transportation system that integrates all modes of travel and provides mobility and accessibility in a convenient, safe, and cost-effective manner.



THE DEPARTMENT OF TRANSPORTATION IS...



...a multi-modal transportation agency responsible for providing a safe and sustainable transportation system and protecting and enhancing the public space.

CHALLENGES



Baltimore does not currently have a comprehensive transportation plan

- Where are we going?
- How do we get there?
- What do we need to get there?



COMPREHENSIVE TRANSPORTATION PLAN



- This plan is about MOBILITY - how we will get around our city.
- It will provide a focus for a vision through 2045, which embraces:
 - Equity
 - Innovation
 - Sustainability



COMPREHENSIVE TRANSPORTATION PLAN



The plan will reflect the changes in our city:

- Shared mobility – Uber and Lyft, scooter and bikeshare
- Demographics – Who lives here?
- Land use – Where do people live, work, and play?
- Travel patterns - Where are people going?



PHASES OF THE COMPREHENSIVE TRANSPORTATION PLAN DEVELOPMENT



Phase I: Establish a planning baseline of the City today, Summer 2018 – Winter 2018

We are here

Phase II: Build awareness of the project among the public and stakeholders, Winter 2018 – Summer 2019

Phase III: Develop the Comprehensive Transportation Plan with a robust public participation program, Summer 2019 – Winter 2020

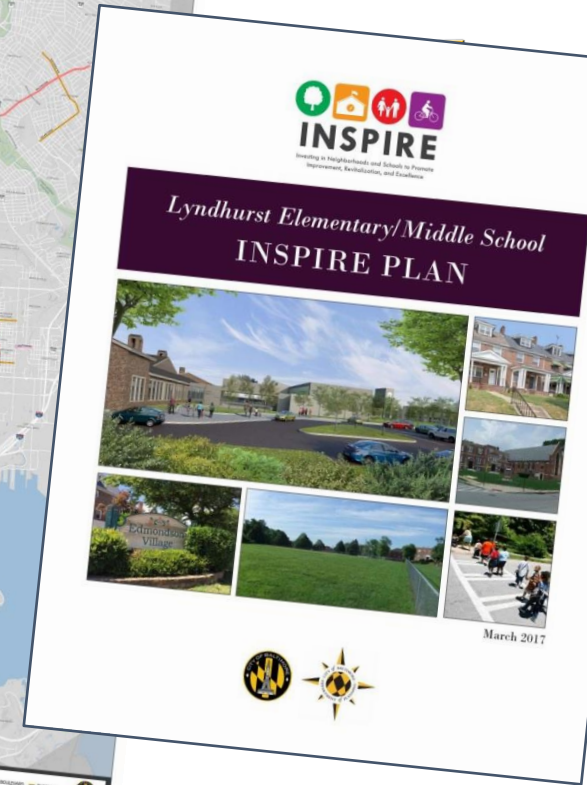
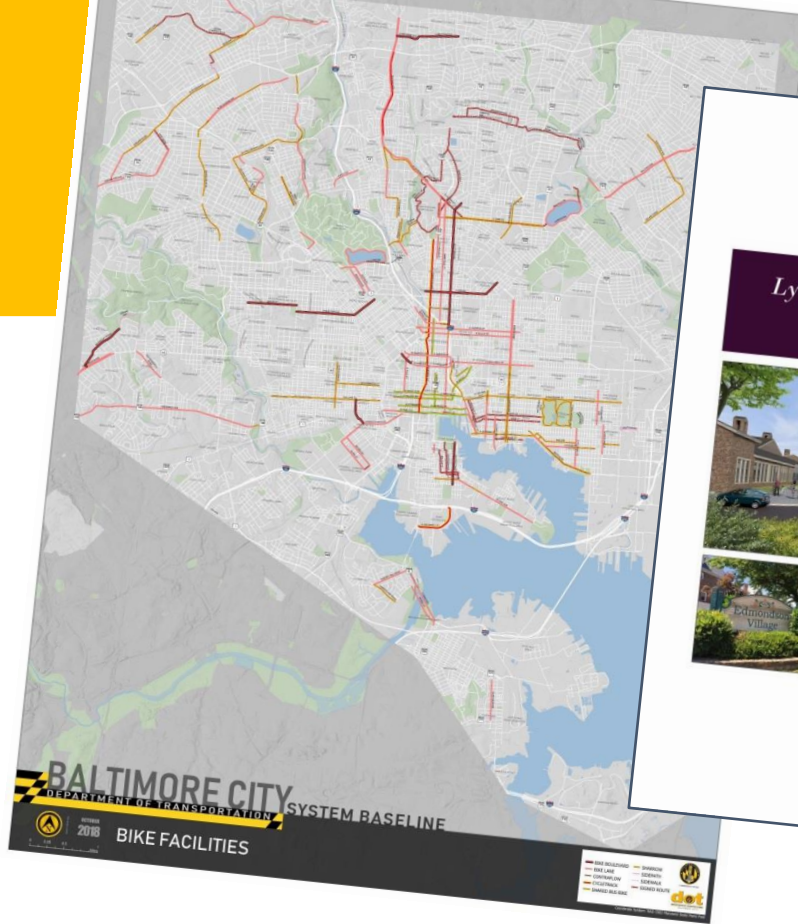
PHASE I: TRANSPORTATION PLAN BASELINE



- Establish a baseline for the City's upcoming transportation planning effort
- Goal: Identify the previous plans and transportation recommendations for Baltimore and its neighborhoods



PHASE I: ESTABLISHING THE BASELINE



- Create an atlas of existing conditions using GIS
- Create a mapping tool to show recommendations

PHASE I: PLAN COLLECTION AND REVIEW



- Plans for Baltimore and its neighborhoods were collected from city and state agencies (65 entities)
- Criteria:
 - No more than 10 years old
 - Adopted or accepted by the City
 - Transportation related recommendations only





PHASE I: PLAN COLLECTION AND SCREENING

- 231 total documents collected
- 113 of which were published after 2007, and adopted or accepted by the City
- 99 plans had transportation recommendations



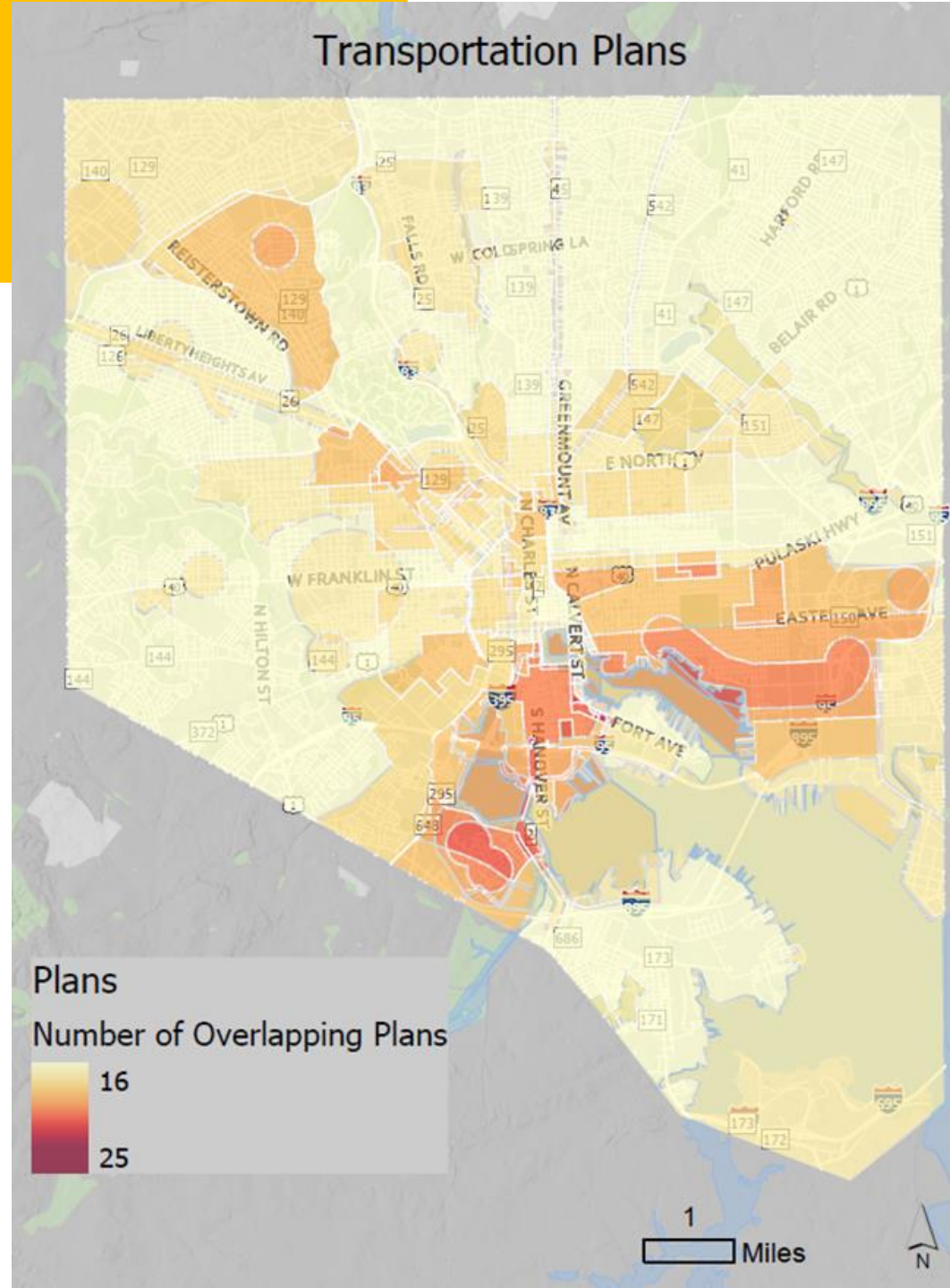
PHASE I: RECOMMENDATIONS DATABASE



- Three types of databases were created (Excel, GIS, Onbase)
 - Categorized recommendations by theme (Bike/Trail, Pedestrian, Roadway, Safety, Streetscape, Traffic, ADA, Parking, Transit and Bridges)
 - Searchable by plan, neighborhood, council district, agency, and issue
 - User-friendly and accessible
- Each individual recommendation was mapped

PHASE I: PLAN MAPPING

The 99 adopted and accepted plans were mapped in GIS to show the plan boundaries.

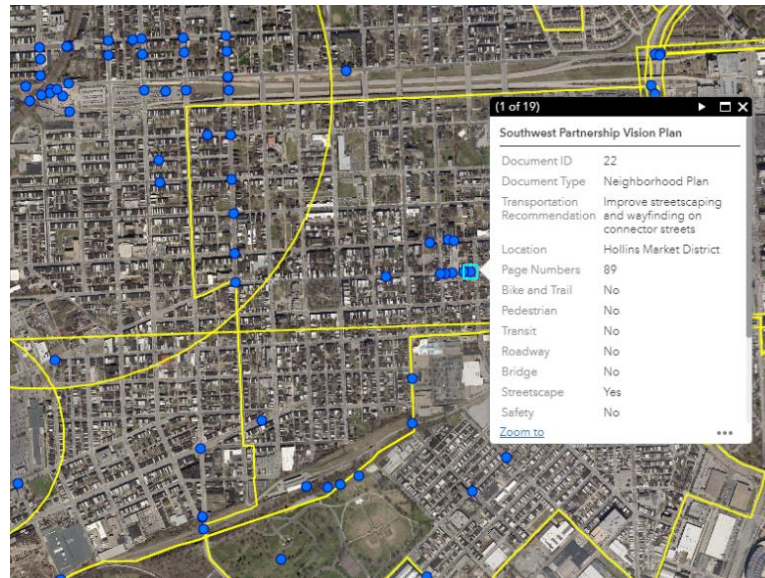


PHASE I: APPLICATION DEMONSTRATION



- Recommendation Interactive Map

<https://rkk.maps.arcgis.com/apps/webappviewer/index.html?id=861476be5b364ab1b325b031f70519cb>



PHASE II: APPLICATION DEMONSTRATION

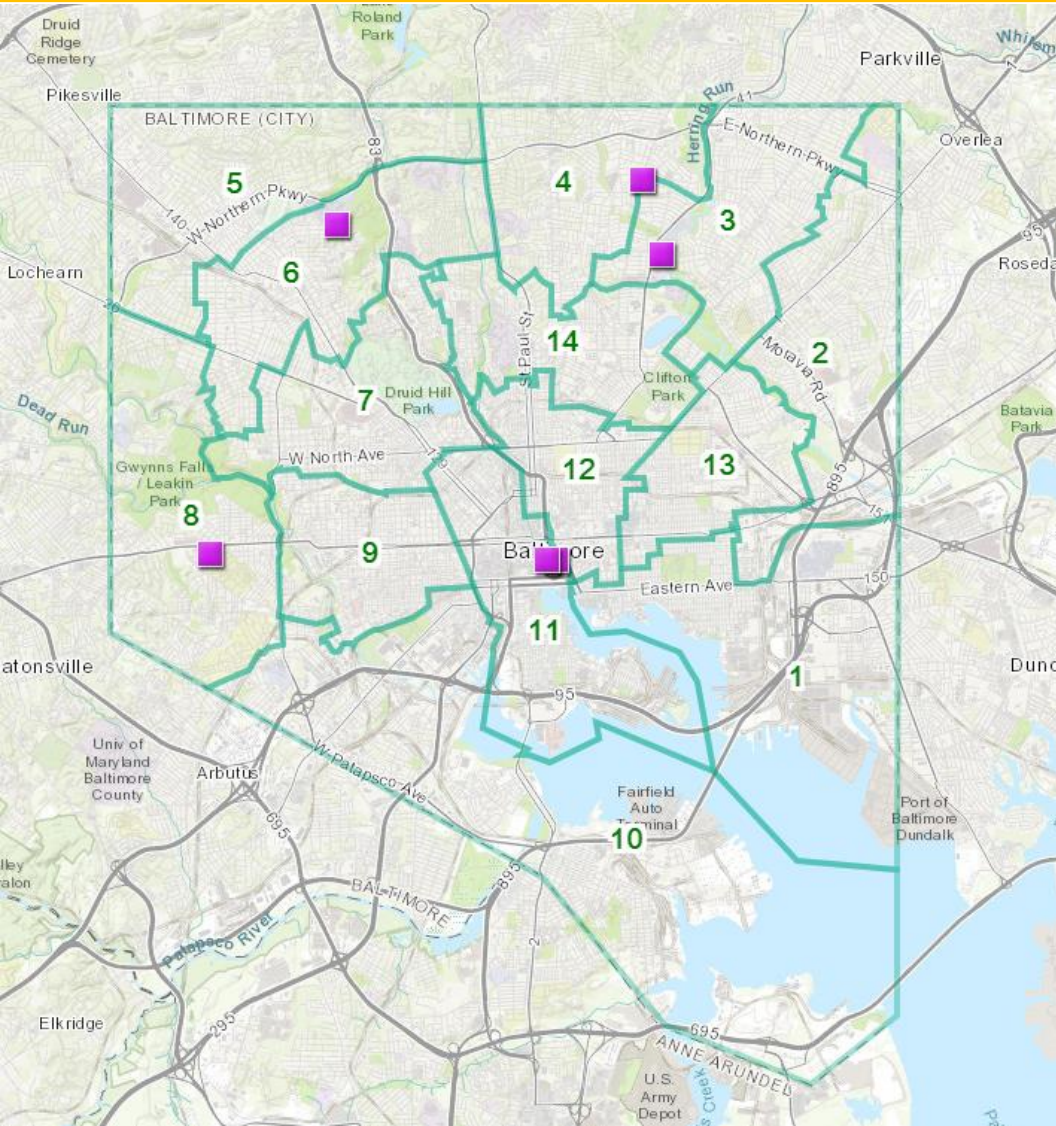


- Story Map

<https://baltimoredot.maps.arcgis.com/apps/MapJournal/index.html?appid=9d340e1b33d74128a2724f0cfb9b956b>

A screenshot of an Esri Story Map. The left side features the Baltimore DOT logo, which consists of the letters "dot" in a large, bold, yellow font. The letter "o" is replaced by the City of Baltimore seal. Below the logo, the text "DEPARTMENT OF TRANSPORTATION" is written in a bold, black, serif font, and "BALTIMORE CITY" is written in a smaller, black, sans-serif font below that. The right side of the screenshot shows a dark background with the title "Baltimore, DOT, Comprehensive Transportation Plan" in yellow. Below the title, there is a paragraph of white text: "The Baltimore City Department of Transportation (BCDOT) is developing a Comprehensive Transportation Plan for the City that is informed by current conditions and establishes a vision for a transportation system that considers a variety of users and needs. The Transportation Comprehensive Plan will provide baseline and projected findings, actionable goals, recommendations, strategies for implementation, and performance metrics. The plan aims to provide direction to City officials, staff, and stakeholders to implement specified goals and achieve the overall vision for the city." At the bottom right of the screenshot, there is a blue arrow pointing downwards.

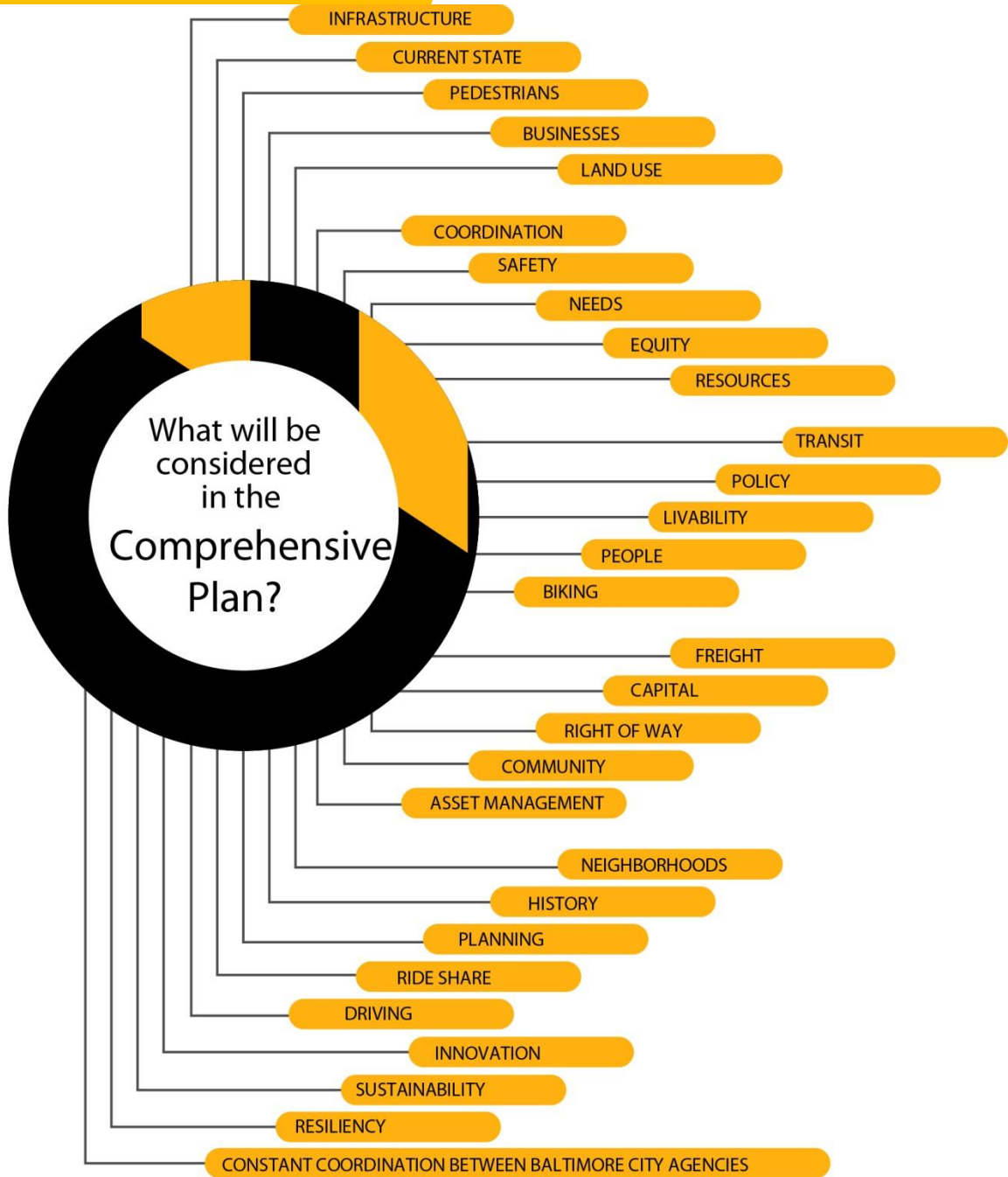
PHASE II: INITIAL PUBLIC OUTREACH



- *Open Houses*
- *Community Meetings*
- *Pop-ups*



PHASE III: PLAN DEVELOPMENT

Baltimore City DOT will be putting out a request for proposals from planning consultants in 2019 to begin developing the Comprehensive Transportation Plan.



WE WANT TO HEAR FROM YOU



- Sign up for emails
- Get Social with us  
- Attend our public meetings
- Tell others about our work
- Offer feedback



RESOURCES



<https://transportation.baltimorecity.gov>

Contact us:

417 E. Fayette Street
5th Floor
Baltimore, MD 21202
(443) 984-4092

Theo Ngongang

Theo.Ngongang@baltimorecity.gov

Mikah Zaslou

Mikah.Zaslou@baltimorecity.gov



@BmoreCityDOT



@BaltimoreTransportation