

Anne Arundel Transportation Commission

BALTIMORE REGIONAL TRANSPORTATION BOARD

May 22, 2018 9:00 - 11:00 A.M.
Baltimore Metropolitan Council
1500 Whetstone Way, Suite 300, Baltimore, MD 21230



OFFICE OF TRANSPORTATION

Purpose

- ▶ Established by County Executive
- ▶ Created to Provide Recommendations
- ▶ Focused on Bicycling, Pedestrian, Public Transportation, Highways, and Program Administration



Composition

12 Members

- ▶ One member from the Aging and Disabilities Commission.
- ▶ One members from the RTA Board.
- ▶ One member from the Economic Development Commission.
- ▶ One member from the Anne Arundel County Bicycle Advisory Commission
- ▶ Two county residents' members, who shall be residents of the county possessing qualifications in land-use, transportation and/or municipal finance.
- ▶ One City of Annapolis resident who shall be residents of the county possessing qualifications in land-use, transportation and/or municipal finance.
- ▶ One member from the City of Annapolis nominated by the Mayor.
- ▶ One member from the Workforce Development.
- ▶ One member from the Department of Social Services.
- ▶ One member from the Housing Commission.
- ▶ One member from the Department of Health.



Mission

- MAINTAINING A COMPREHENSIVE TRANSPORTATION DEVELOPMENT PROGRAM THAT IDENTIFIES THE ANNE ARUNDEL'S LONG-RANGE TRANSPORTATION NEEDS.
- RECOMMENDING ON AN ANNUAL BASIS A TRANSPORTATION IMPROVEMENT PROGRAM FOR THE SIX FISCAL YEARS NEXT ENSUING.
- RECOMMENDING PRIORITIES FOR PROJECT REQUESTS THAT ARE TO BE SUBMITTED FOR FUNDING THROUGH STATE, REGIONAL AND LOCAL TRANSPORTATION FUNDING PROGRAMS.
- RECOMMEND THE DEVELOPMENT OF INNOVATIVE LOCAL AND REGIONAL TRANSIT OPTIONS.
- RECOMMEND QUALITY PEDESTRIAN AND BICYCLE ACCOMMODATIONS.
- RECOMMEND PRIORITIES FOR ALL ITS CITIZENS, REGARDLESS OF AGE OR ABILITY, WITH ACCESSIBILITY AND MOBILITY.
- RECEIVING REPORTS AND FINDINGS ON TRANSPORTATION PROJECT DEVELOPMENT STUDIES AND RECOMMENDING FOLLOW UP ACTIONS.
- RECOMMENDING TRANSPORTATION PROJECTS FOR ADDITION TO OR DELETION FROM THE METROPOLITAN PLANNING ORGANIZATION AND REGIONAL LONG-RANGE TRANSPORTATION PLANS.
- RECOMMENDING SUCH AMENDMENTS MAY BE NECESSARY OR DESIRABLE TO THE TRANSPORTATION CHAPTER OF THE ANNE ARUNDEL'S ADOPTED MASTER PLAN.
- PREPARING PERIODIC REPORTS ON THE ANNE ARUNDEL'S PROGRESS IN IMPLEMENTING ITS LONG-RANGE TRANSPORTATION PLAN.



Transportation Priorities

Transit

1. INCREASE GEOGRAPHIC COVERAGE
2. REDUCE HEADWAYS OF SERVICE
3. EXPAND SPAN OF SERVICE
4. IMPROVE ACCESS TO TRANSIT (SIDEWALKS, SHELTERS, STREET LIGHTING, PARK AND RIDE)

Pedestrian

1. EXPAND SIDEWALK NETWORK CONNECTING COMMUNITIES TO WALKABLE ATTRACTIONS
2. REDUCE CRASHES
3. PROMOTE PEDESTRIAN SAFETY THROUGH EDUCATION

Highways

1. REDUCE CRASHES
2. INCREASE CAPACITY AROUND AND ACCESSIBILITY TO GROWTH AREAS
3. REDUCE SPOT CONGESTION
4. PROMOTE RIDESHARING/CARPOOLING PROGRAMS

Bicycle

1. CONNECT TRAIL SYSTEM TO COMMUNITIES AND ACTIVITY AREAS
2. PROMOTE SAFE BICYCLE USE ON STREETS, EDUCATION/ENGINEERING

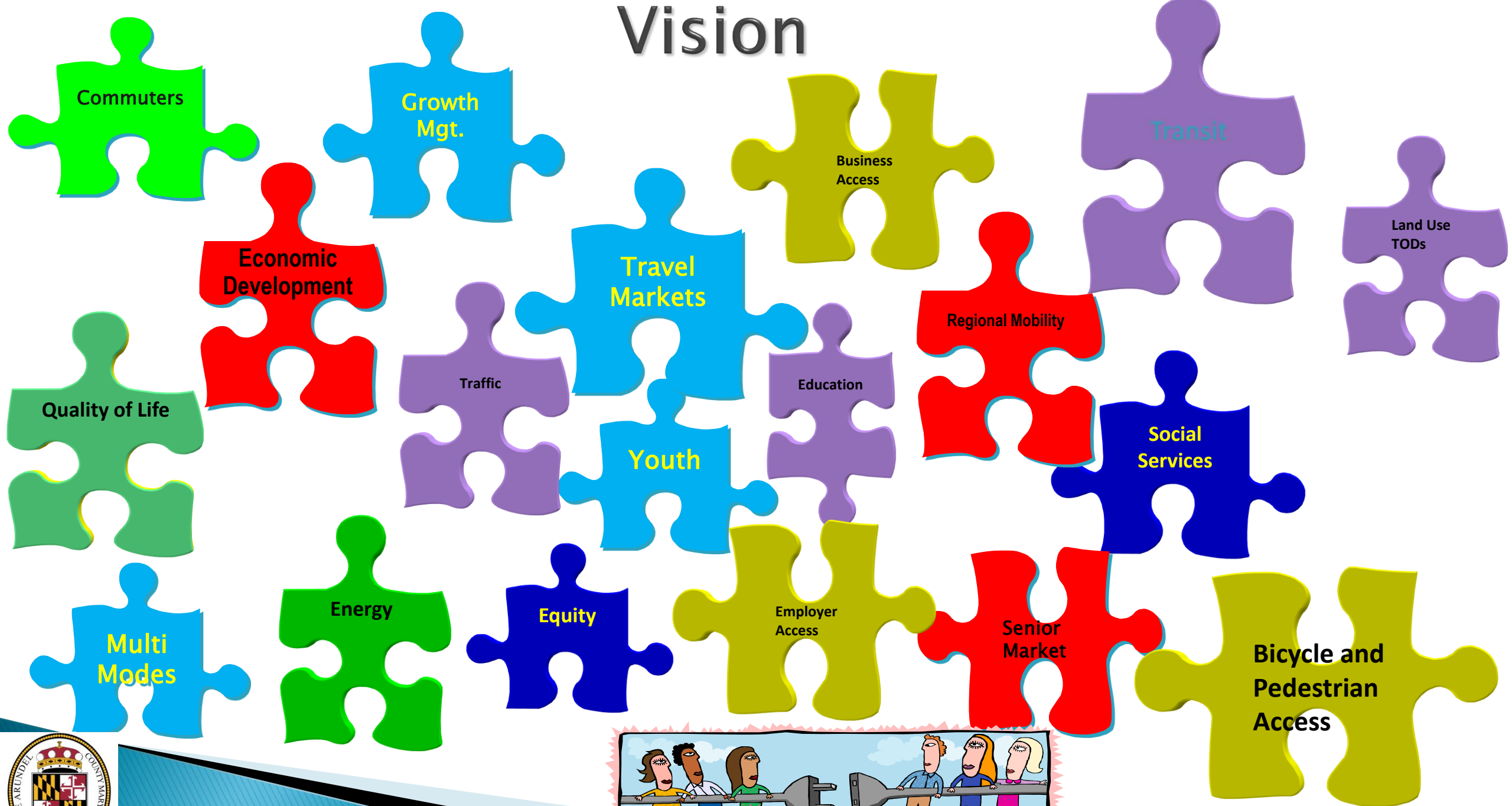


Role and Responsibilities

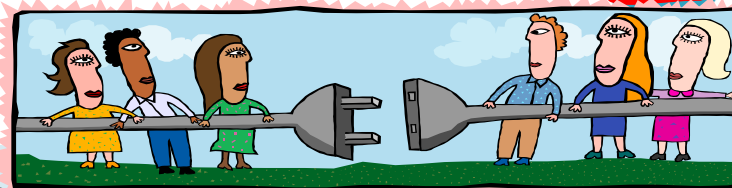
- ▶ Coordinate State, Regional and local transportation planning efforts in County.
- ▶ Identify/Prioritize transportation projects for highway, transit and non-motorized travel (pedestrian, bicycle).
- ▶ Support General Development Plan and Small Area Planning process by advancing plan recommendations.
- ▶ Support travel demand reduction efforts.
- ▶ Participate in identifying and implementing transportation policies in the County.



Vision



OFFICE OF TRANSPORTATION



Thank You

