

Crash Site Visit & Safety Audit

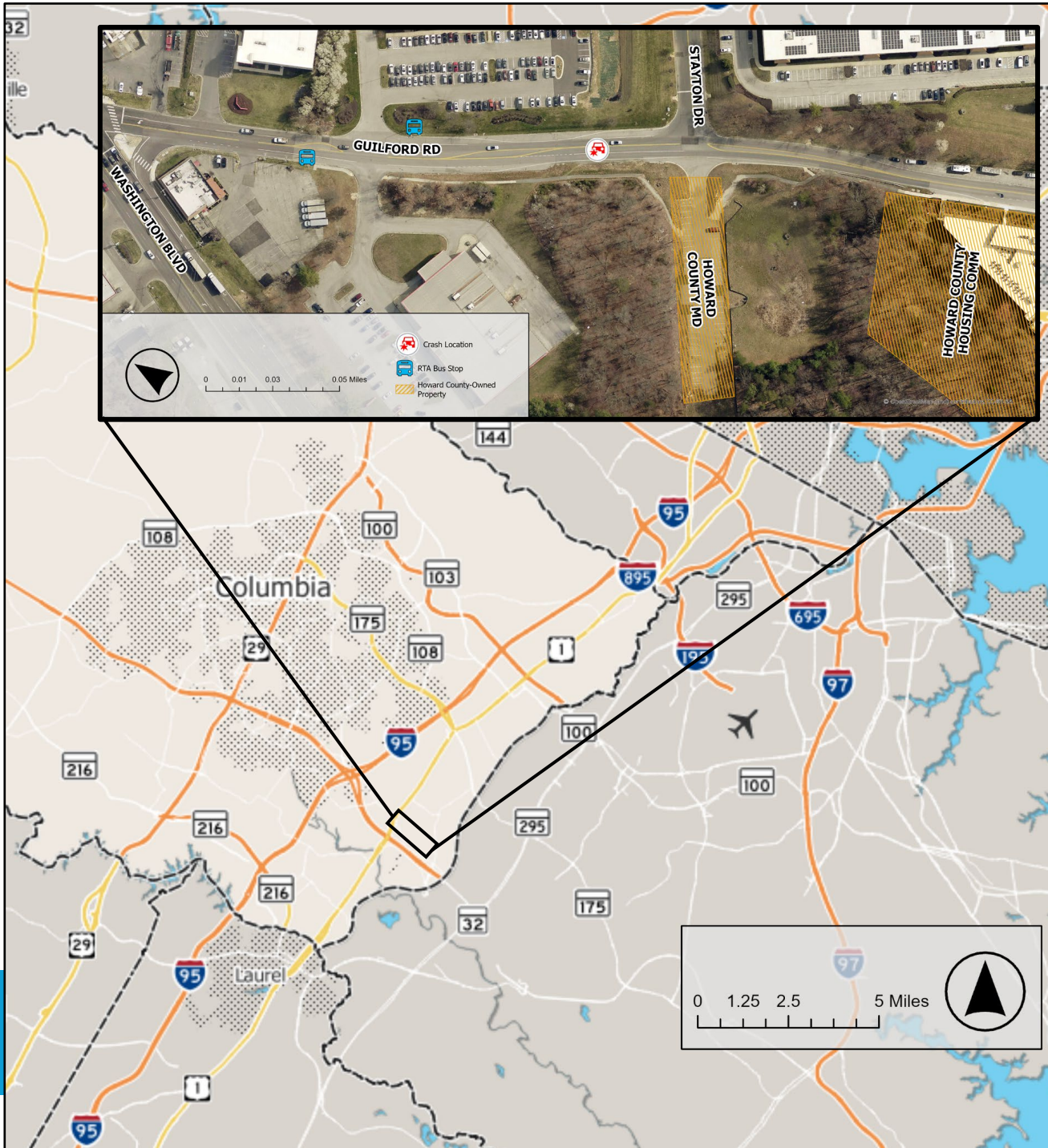
Connor Jett

Planner, Howard County
Office of Transportation

03/12/2025

Background

- Fatal pedestrian-involved crash in the 10300 block of Guilford Road on Sept. 30, 2024
 - Pedestrian struck by single vehicle while walking in roadway around 8:00 PM
- Approx. 500 ft. from county-owned facility for vulnerable populations and 500 ft. from local transit stop
- First time the local safety plan workgroup walked a site to analyze circumstances around crash
- Anticipated review of crash under county law (CB57-2022)



Observations

Things are not always what they seem.
First-hand experience is invaluable.



Observations



Observations



Observations



Observations



Observations



Observations





Observations

- Over 30 pedestrians and bicyclists during the 90-minute visit
- Most seemed to be a vulnerable population member travelling to/from the Grassroots Day Resource Center
- Most were pedestrians, and all chose to walk in the roadway rather than use the pathway offset from the road
- Pathway is poorly located and maintained

Recommendations and Conclusions

Recommendations/Actions				
	Engineering	Education	Enforcement	Emergency Response
Immediate	<p>Take out mid-block curb cuts, add a guardrail/ barrier to divert ped. traffic to pathway. (DPW)</p> <p>Explore ped. warning signs on roadway (DPW)</p> <p>Pave gravel sections of pathway (DPW)</p> <p>Add wayfinding signs to existing path to day resource center parking lot (DPW)</p> <p>Trim trees/brush around parking lot to improve visibility/safety (DPW)</p> <p>Evaluate bus route changes</p> <p>Analyze historical crash data</p>	<p>Meet with SHA contact for outreach materials</p> <p>Meet with DCRS to understand outreach and resources to vulnerable pop. in area</p> <p>Add safety signage to day resource center and current pathway/parking lot</p> <p>HCPSS to coordinate with ZUM to make bus drivers aware of peds along roadway</p>	<p>Evaluate speed enforcement on Guilford Rd.</p>	<p>HCFRS to gather data on Sept. 30th crash</p> <p>Analyze response data</p>
Short-term	<p>Change bus stop location (DPW)</p> <p>Add lighting to parking lot (HC)</p> <p>Add new sidewalk/roadway improvements based on current plans (J4181 phase 1) (DPW)</p>	<p>Workgroup reps to conduct outreach/education at day resource center/along roadway</p> <p>OOT to develop survey and conduct outreach to road users in area</p>		
Long-term	<p>Implement phase 2 of capital project east of resource center (DPW)</p>			

Lessons Learned



Have a solid plan...But *plan* for the unexpected.



Chose a site that has tangible goals and objectives.



Do not expect to come away with a strong cohort of community support.