



---

# Regional Safety Performance Targets

*Baltimore Regional Safety Subcommittee  
February 27, 2020*



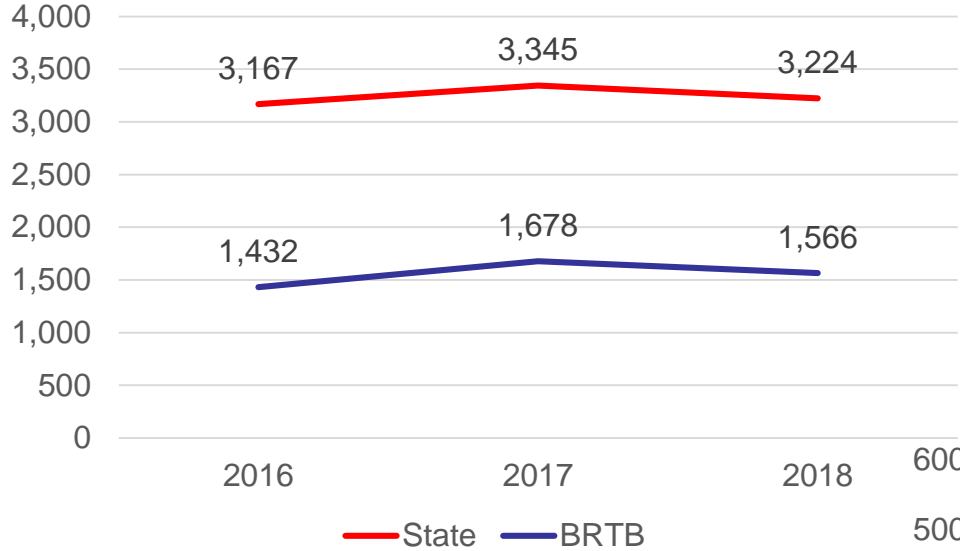
# Safety in the Baltimore Region

	2016-2018 average
<b>BRTB</b>	
Crashes	63,801
Serious Injuries	1,559
All Injuries	26,040
Fatalities	230
<b>State</b>	
Crashes	117,822
Serious Injuries	3,245
All Injuries	50,742
Fatalities	531

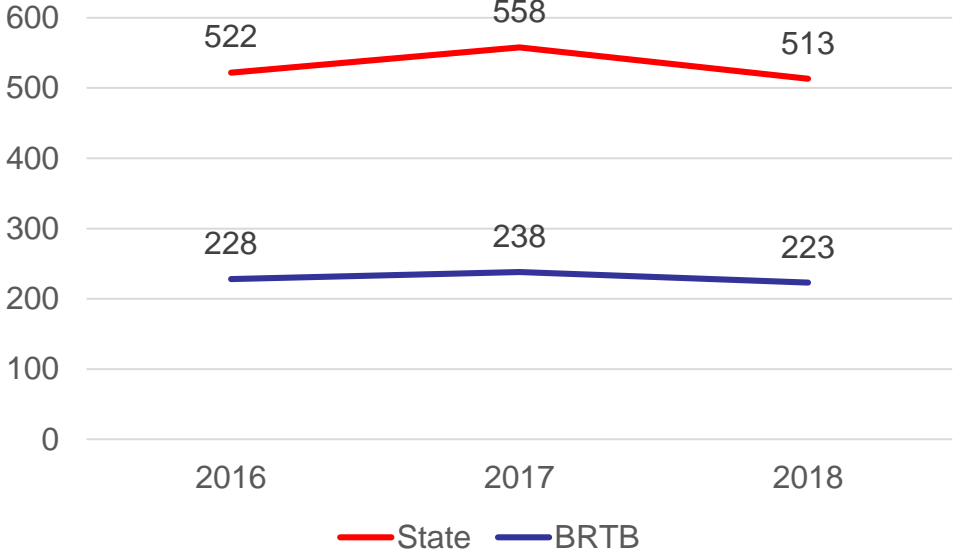
2016-2018 Percent Change		
	BRTB	State
Crashes	-8.0%	-2.0%
Serious Injuries	9.4%	1.8%
All Injuries	0.5%	-1.9%
Fatalities	-2.2%	-1.7%

# Safety in the Baltimore Region

## Serious Injuries

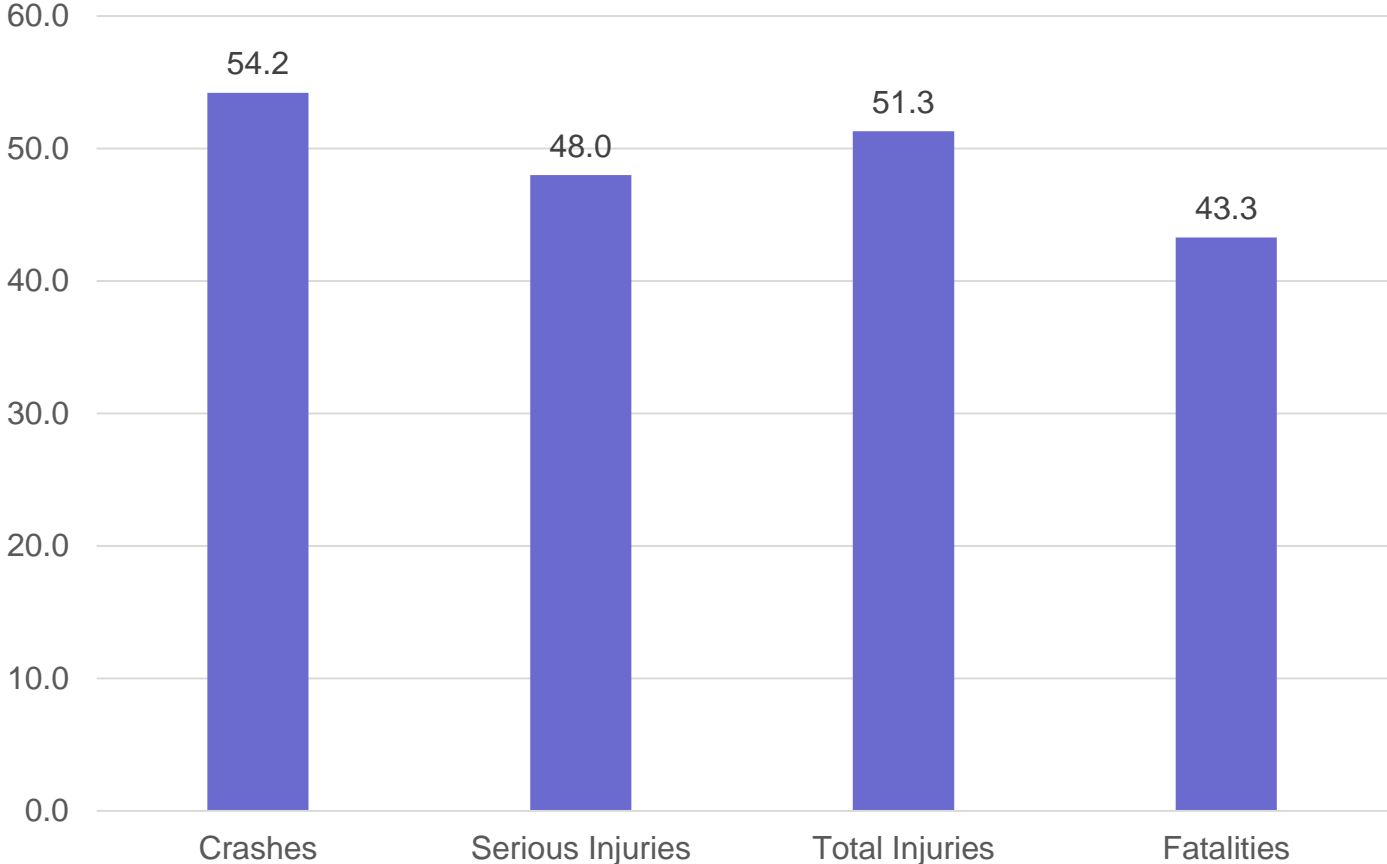


## Fatalities



# BRTB % of State

2016-2018 average



# Baltimore Region Summary

<b><u>Total</u></b>	<b>2018</b>	<b>% of Region</b>
Total Crashes	62,202	
Total of All Fatalities	223	
Total Number Injured	25,940	

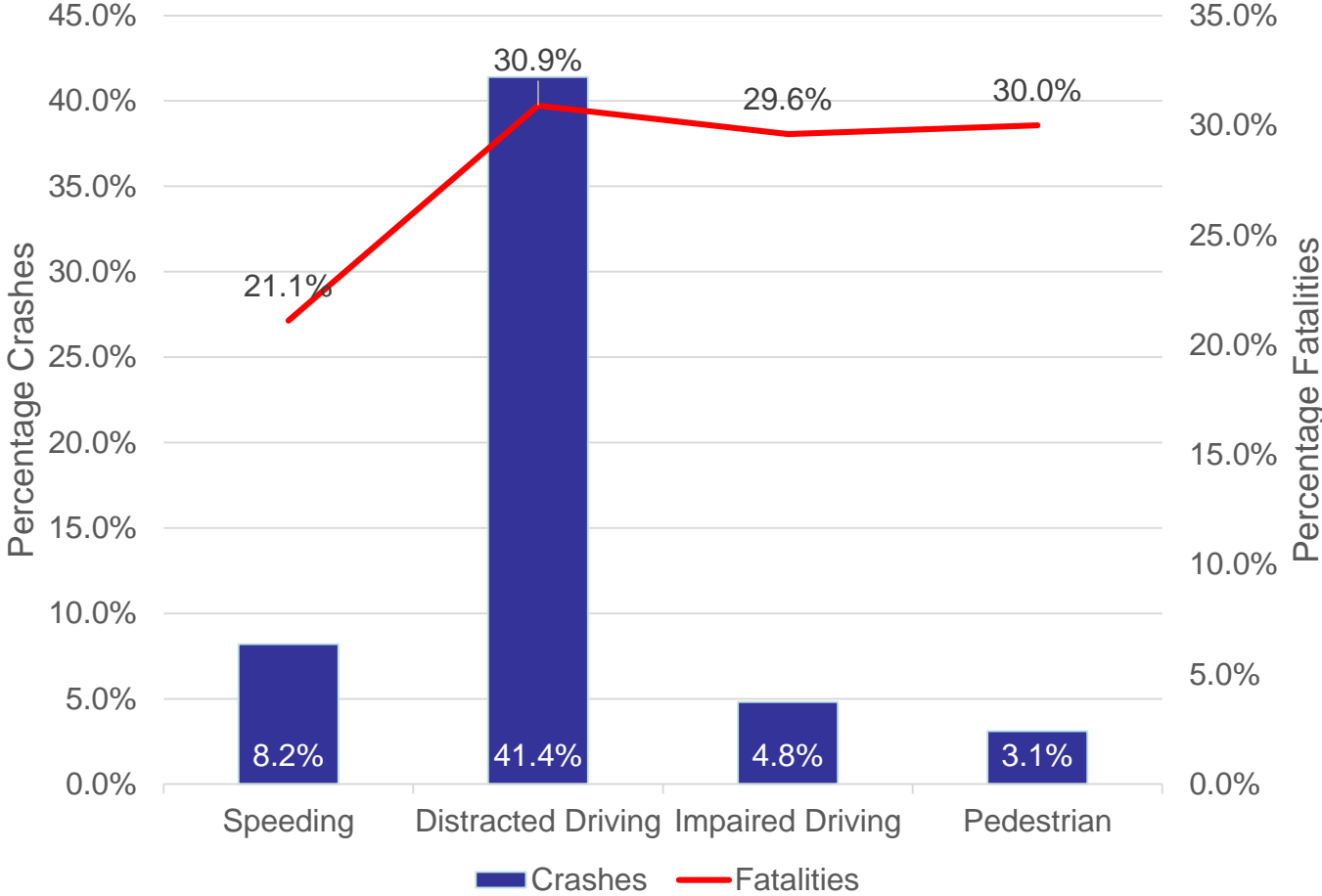
<b><u>Speed</u></b>		
Total Crashes	5,080	8.2%
Total of All Fatalities	47	21.1%
Total Number Injured	2,192	8.5%

<b><u>Distracted</u></b>		
Total Crashes	25,731	41.4%
Total of All Fatalities	69	30.9%
Total Number Injured	11,933	46.0%

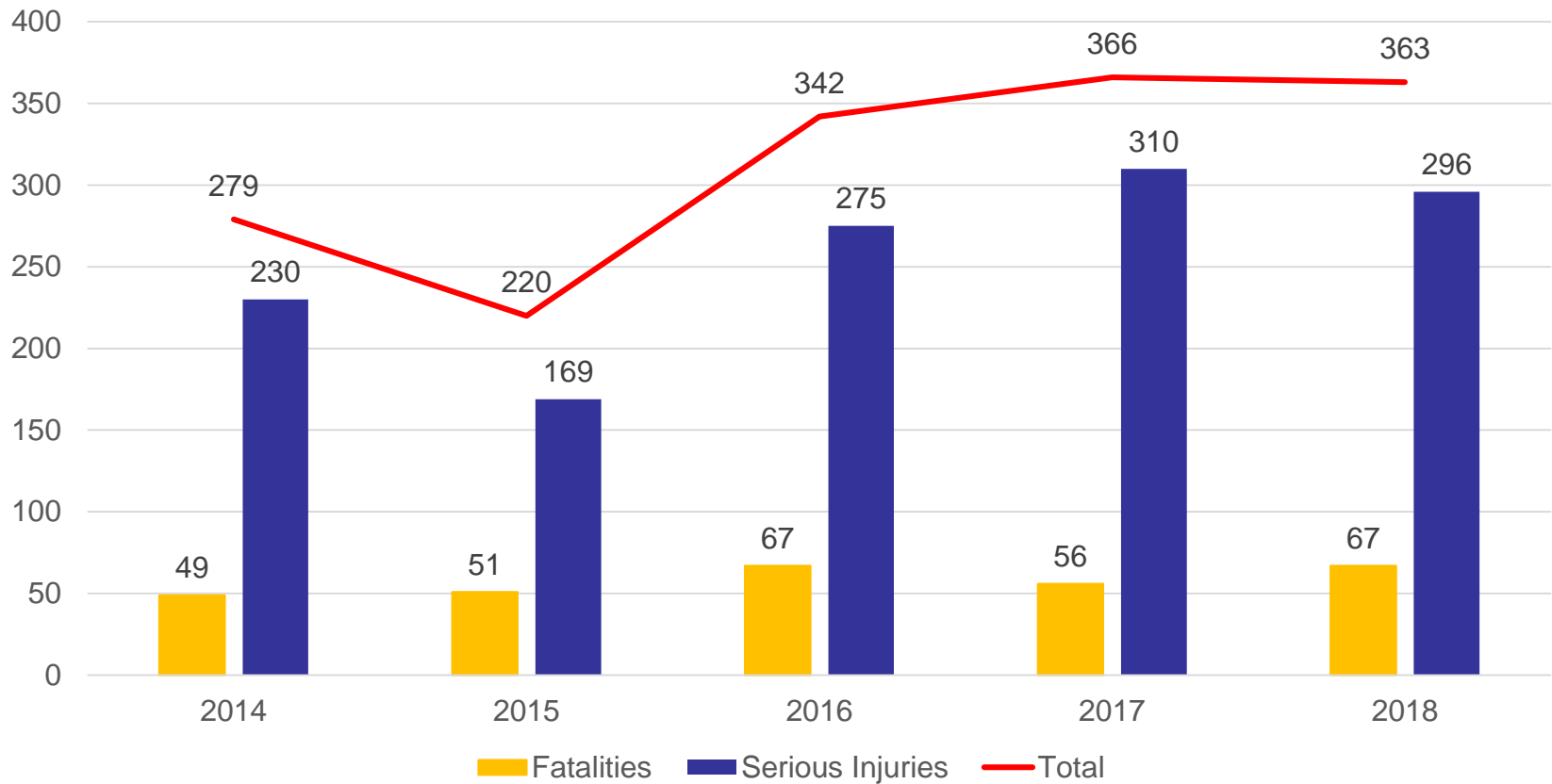
<b><u>Impaired</u></b>	<b>2018</b>	<b>% of Region</b>
Total Crashes	2,977	4.8%
Total of All Fatalities	66	29.6%
Total Number Injured	1,366	5.3%

<b><u>Pedestrian</u></b>		
Total Crashes	1,921	3.1%
Total of All Fatalities	67	30.0%
Total Number Injured	1,994	7.7%

# Baltimore Region Summary - 2018



# Non-motorized Serious Injuries and Fatalities (BRTB region)



# Safety Performance Targets

- Federal regulations state that MPOs must set safety performance targets 180 days after the State HSIP Report is submitted.
- Initial BRTB safety targets set in January 2018 and updated in January 2019.



# BRTB Target-Setting Process



- **Follow Maryland's methodology - Toward Zero Deaths**
  - Reduce by 50% from 2008 → 2030
- **Set the five targets specific to the BRTB region**

# Resolution #20-10

## Baltimore Region Highway Safety Targets

Performance Measure	2008 Baseline	2017 Actual	2018 Actual	Change 2017-2018	2016-2020 Target	2030 TZD Goal
Number of Fatalities	242	238	223	↓ 6.30%	181	121
Number of Serious Injuries	1,868	1,678	1,566	↓ 6.67%	1,227*	934
Fatality Rate per 100 Million VMT	0.93	0.86	0.81	↓ 6.16%	0.69	0.47
Serious Injury Rate per 100 Million VMT	7.21	6.05	5.66	↓ 6.53%	4.70*	3.60
Number of Non-motorized Fatalities & Serious Injuries	286	366	363	↓ 0.82%	223*	143

\*To align with State calculations, the trend line was adjusted back to the 2004-2008 average (previously the 2008-2012 average). This resulted in slightly higher targets than last year.

Sources: Maryland State Police crash database, MDOT MVA Highway Safety Office Benchmark Reports, MDOT SHA Mileage Reports

# BRTB Strategies

- What have we done?
  - Incorporated measures and targets into the Transportation Improvement Program (TIP) since May 2019
  - Complete Streets Policies in State and Jurisdictions
  - Congestion Management Process
  - Local Strategic Highway Safety Plans
  - Pedestrian/Bicycle Coordinators in Jurisdictions
  - Continuing Look Alive campaign
- New ideas?

# For More Information

---

**Cindy Burch** | Transportation Planner - Safety

410-732-0500 x 1051 | [cburch@baltometro.org](mailto:cburch@baltometro.org) | [www.baltometro.org](http://www.baltometro.org)

