



Baltimore Regional Transportation Board

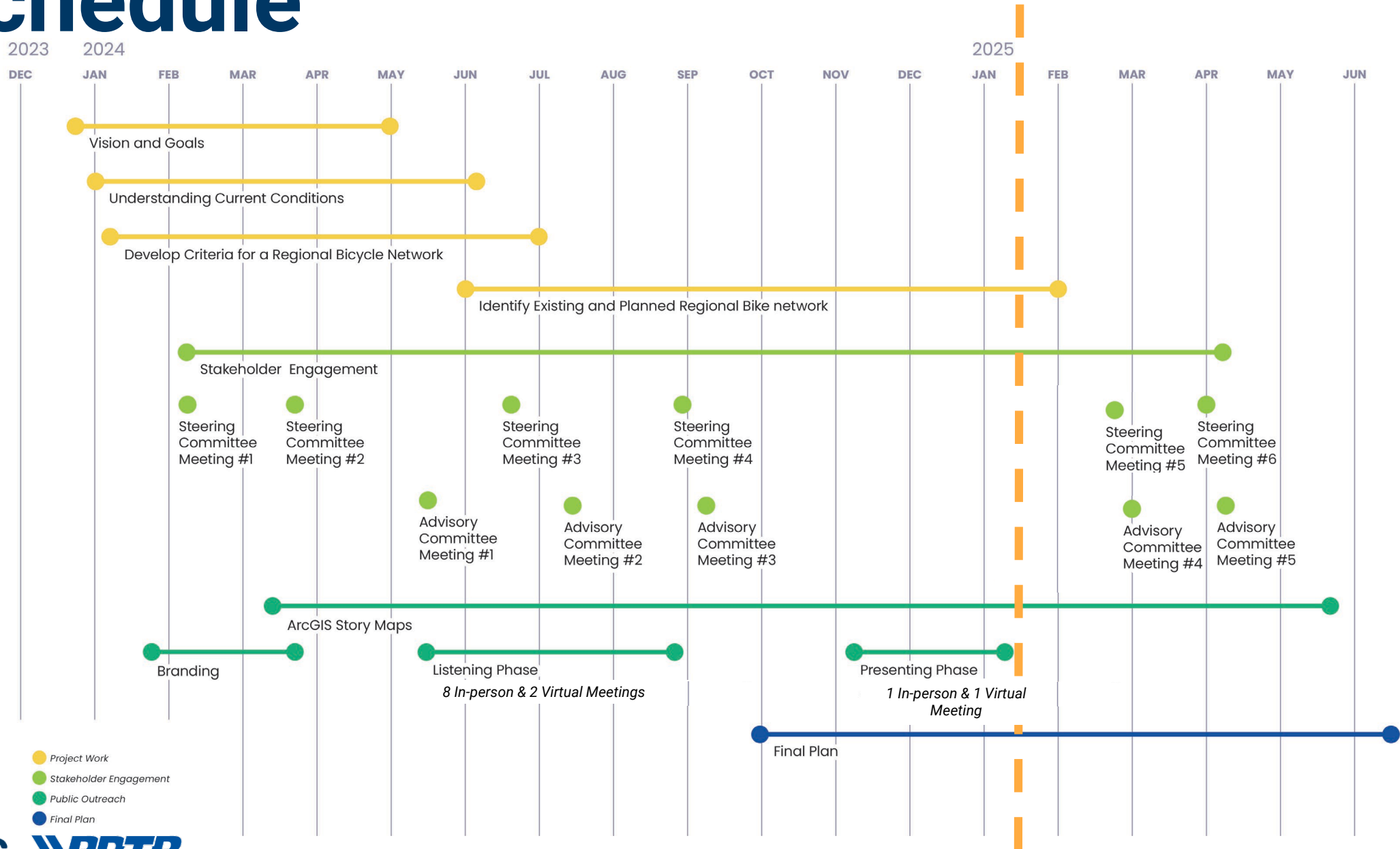
Bikeable Baltimore Region (BBR): A Plan for a Safe and Connected Bike Network

BPAG

January 15, 2025



Schedule



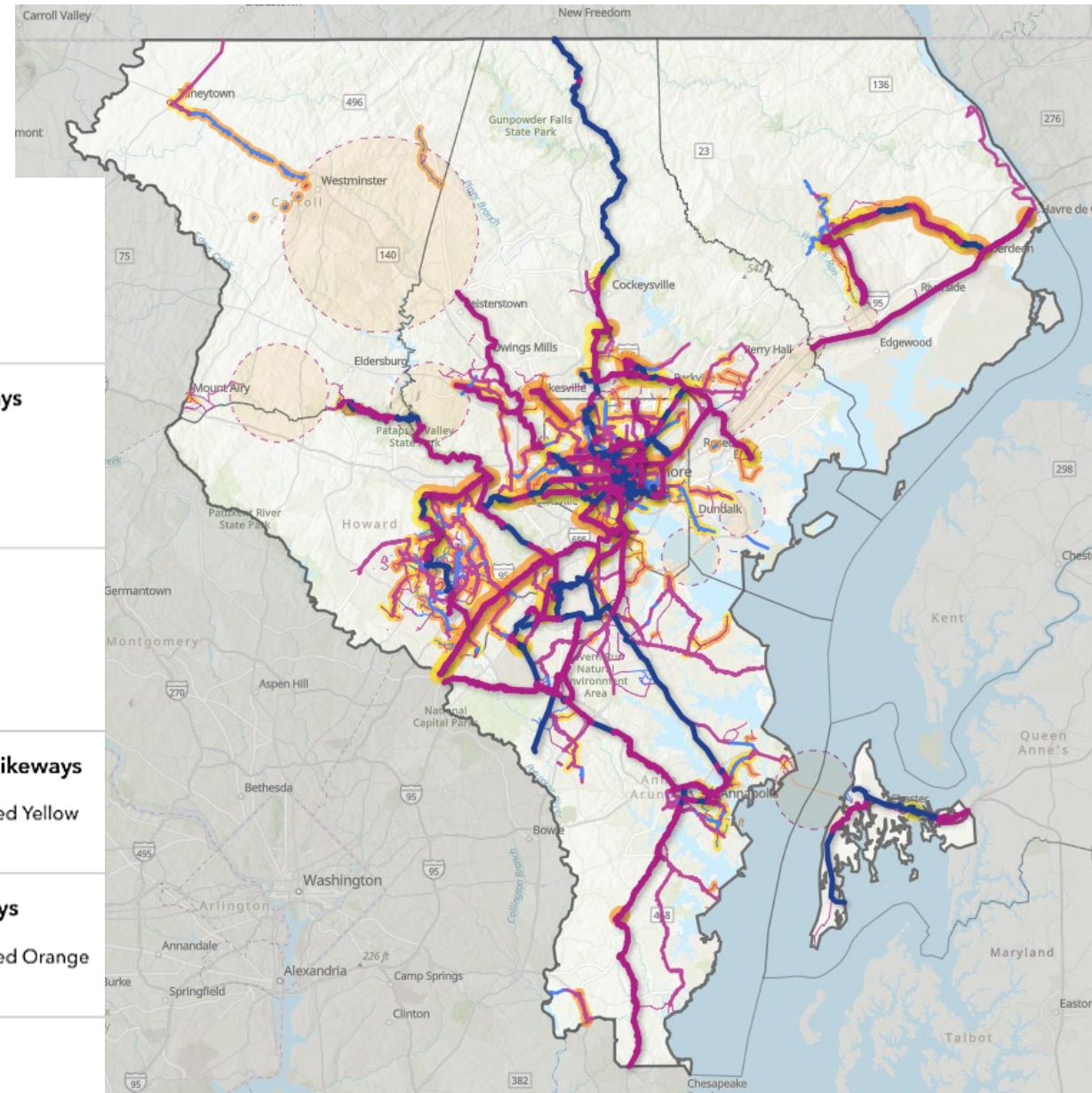
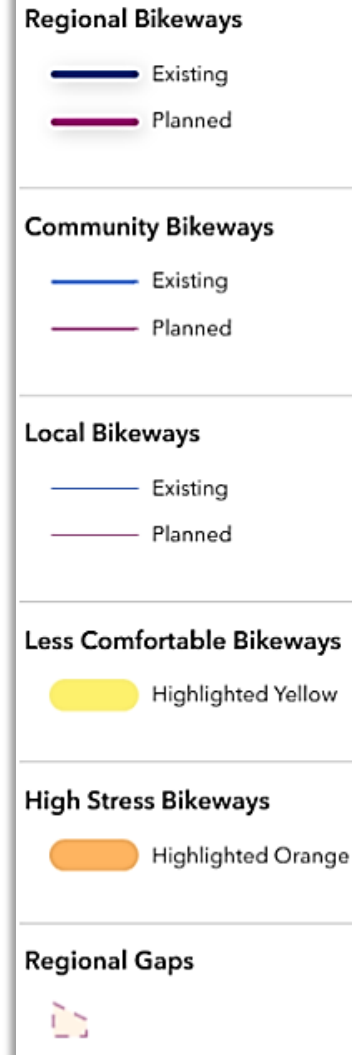
- Project Work
- Stakeholder Engagement
- Public Outreach
- Final Plan

Proposed Regional Bike Network

- Includes bike routes that are comfortable and safe to bike on, based on current plans for the Baltimore region
- Routes are either well-separated from traffic or are on roads with low speed limits and little car traffic
- **Comments welcome until January 10, 2025**



publicinput.com/bikebaltoregion



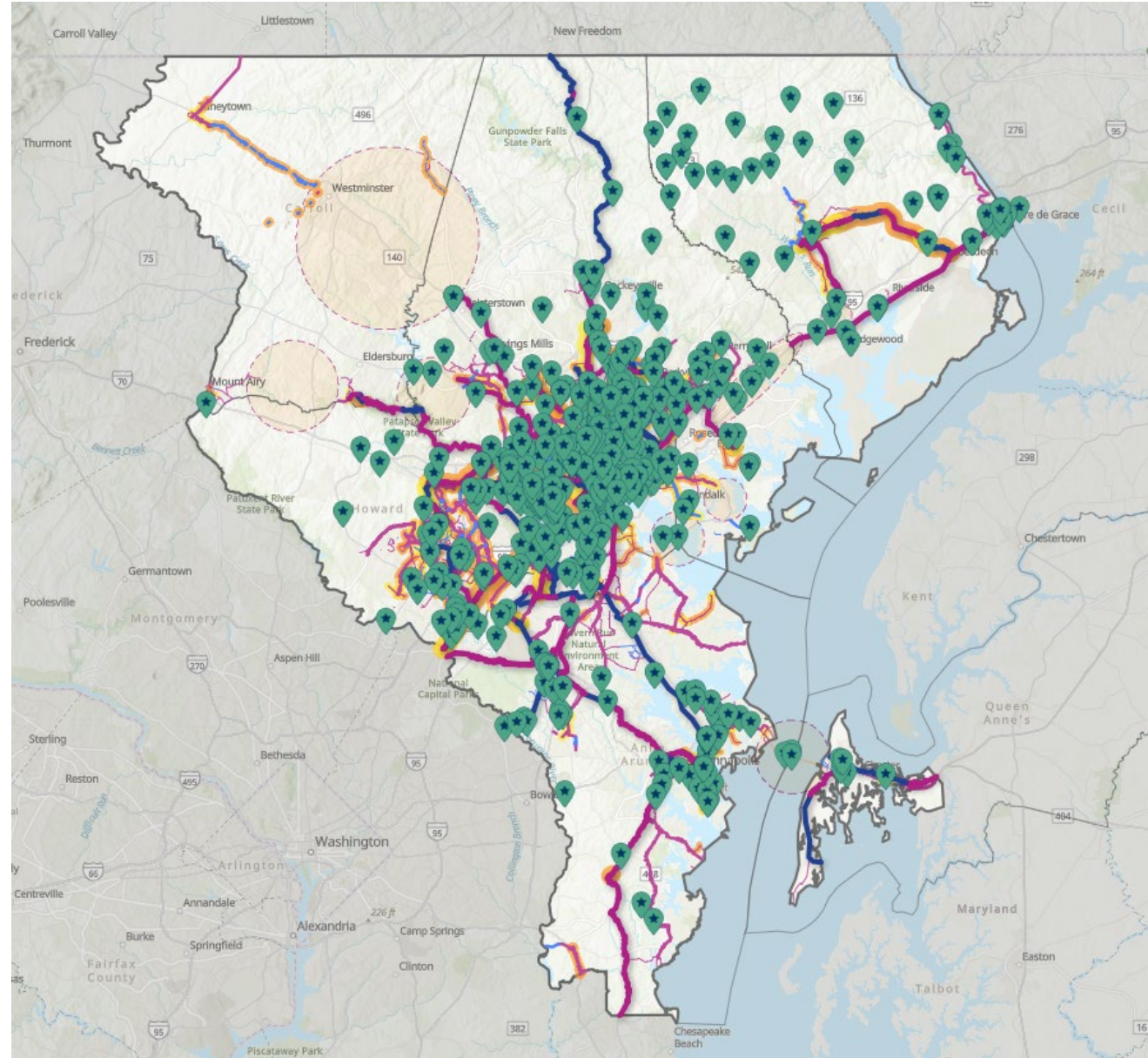
Presenting Phase

- Shared the Proposed Regional Bike Network and solicited feedback
- Nov 10, 2024 – Jan 10, 2025
- In-Person Public Meeting
 - 48 attendees
 - December 10, Baltimore Unity Hall
- Virtual Public Meeting
 - 65 attendees
 - December 12
- 601 online map public comments
- 159 survey responses
- 5,700+ [project website](#) views
- 2,500+ [StoryMap](#) views



Presenting Phase

Jurisdiction	Number of Comments
Anne Arundel County	77
Baltimore City	252
Baltimore County	163
Carroll County	1
Harford County	51
Howard County	52
Queen Anne's County	5
TOTAL	601



Why Are We Asking for Your Input?

Public input will be used to:

- Identify needed updates to the Regional Bike Network
- Shape the project's recommendations for implementation strategies
- Identify ways to measure the success of the Regional Bike Network



Presenting Phase

Thank you for helping spread the word!

A special thank you to our partners:

- Maryland Department of Transportation
- City of Annapolis
- Baltimore City
- Anne Arundel County
- Baltimore County
- Carroll County
- Harford County
- Howard County
- Queen Anne's County

COMMUTER NEWS



Maryland Department of Transportation

Seeking Public Input: Survey Opportunities

BIKEABLE BALTIMORE REGION
A Plan for a Safe and Connected Biking Network

We want to hear from you!

Do you bike now or would you like to? We want your input on our Proposed Regional Bike Network, which will connect the region through safe and comfortable bike lanes and paths.

Join Us

In-Person Public Meeting
December 10, 6:00 a.m.
Beltsville City Hall

Virtual Public Meeting
December 10, 6:00 p.m.

Learn More & Take the Survey
publicinput.com/bikebalto

Baltimore Metropolitan Council's Bikeable Baltimore Region Project

The Baltimore Metropolitan Council's (BMC) Bikeable Baltimore Region (BBR) team has identified a Proposed Regional Bike Network and wants your input! The network aims to be safe and comfortable to use for everyone, regardless of age or ability. To learn more about the potential of the Proposed Network, check out [this article](#) in the *Baltimore Banner*.



ANNAPOLIS
Maryland

- GOVERNMENT
- OUR CITY
- SERVICES
- BUSINESS
- HOW DO I...
- CONTACT INFO

Planning and Zoning

Posted on: December 19, 2024

Bikeable Baltimore Region

City of Annapolis is supporting the Bikeable Baltimore Region, an ambitious plan to better link Annapolis to multiple cities and counties in central Maryland by bike. Although the public meetings have passed, please take a look at the [website](#) for the proposed bike network and submit any comments by January 10. There's a great [story map](#) on the website which provides context on the plan in addition to the proposed network. Thanks!



Scan or visit the link below to learn more about the project and how to comment.



Publicinput.com/BikeBaltoRegion



A Plan for a Safe and Connected Biking Network

We want to hear from you!

Do you bike now or would you like to? We want your input on our Proposed Regional Bike Network, which will connect the Baltimore region through safe and comfortable bike lanes and paths.

Share your

Join Us

In-Person Public Meeting

East Coast Greenway Alliance
January 7 at 4:51 PM · 🌐

The East Coast Greenway has major gaps in the Baltimore Region, and the Bikeable Baltimore Region (BBR) Network is a major step towards filling in the gaps on the Greenway and the larger network for the metro area!

We encourage residents of Baltimore region to review the project materials and submit comments on the online map to support the East Coast Greenway connections. In particular, plans for trails need to be advanced for the East Coast Greenway from Havre de Grace to... See more

"If there was more accessibility to trails I would hop on a bike."
-Courtney, Baltimore City



Baltimore Metropolitan Council
January 3 at 9:25 AM · 🌐

Only a few more days to let us know what you think about the Regional Bike Network. Add your comments by January 10 at publicinput.com/BikeBaltoRegion. Thank y... See more

Southwest Visions Foundation
November 19, 2024 · 🌐

Community members, submit your comments during the open comment period: The Bikeable Baltimore Region (BBR) Presenting Phase comment period has officially launched! This is the first time a regionally connected bike network has been identified for the Baltimore region.

The public is invited to learn more about the Proposed Regional Bike Network on the project website and interactive StoryMap.... See more

"I would really enjoy getting out and having a trail accessible right out of my door. If there were more connected paths I'm sure I would find more places to go, but right now I am still restricted."
-Avmeet, Howard County




Baltimore Metropolitan Council
November 15, 2024 · 🌐

Help shape the future of biking in our region! Tell us what excites you about the Proposed Regional Bike Network and any suggestions for improvement. Visit [publ...](https://publicinput.com/BikeBaltoRegion) See more

Bike Maryland
December 4, 2024 · 🌐

"Regional planners are identifying gaps where better infrastructure could make the Baltimore region more bikeable — and they want public feedback."



THEBALTIMOREBANNER.COM

Trouble biking across the Baltimore area? Planners want to hear from you
The Baltimore Metropolitan Council is seeking public input on its latest plan to create a more ...

Baltimore regions maps first-ever connected bike network

By: Will Carter - WBAL NewsRadio Digital Producer | December 9, 2024



(Photo by Mark Makela/Getty Images)

For the first time, a regionally connected bike network has been mapped out.

The Baltimore Metropolitan Council has compiled existing and planned bike routes across Anne Arundel, Baltimore, Carroll, Harford, Howard and part of Queen Anne's counties, as well as Baltimore City, into one big map.

Trouble biking across the Baltimore area? Planners want to hear from you

Daniel Zawodny 12/2/2024 8:00 a.m. EST



The proposed Regional Bike Network aims to stitch together isolated plans by identifying possible connections between them, a planner said. (Daniel Zawodny/The Baltimore Banner)

Most people find riding a bike on busy, multilane streets or roads without shoulders intimidating, but for many rides across the Baltimore region — from



THE BALTIMORE REGIONAL TRANSPORTATION BOARD'S

BMC BRTB

Active Transportation Newsletter

A roundup of news related to active transportation in the Baltimore region.

Bikeable Baltimore Region: Join us at our December public meetings

The Bikeable Baltimore Region (BBR) project presents the Proposed Regional Bike Network. **Join us at a public meeting in December to learn more and share your ideas!** Each meeting will begin with a presentation about the project, followed by a group discussion. Afterward, you can give more feedback on the Proposed Regional Bike Network at different activity stations.

- [In-person public meeting](#), Tuesday, December 10 at 6 p.m. (Baltimore Unity Hall)
- [Virtual public meeting](#), Thursday, December 12 at 6 p.m.

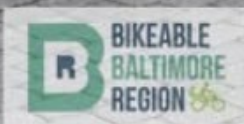


Baltimore Metropolitan Council

November 22, 2024 · 🌐

We're planning a Regional Bike Network, and we want your feedback! Which features excite you the most? Any areas for improvement? Take our survey at publicinput.com/bikebaltoregion by January 10 #BikeBaltoRegion

"I would bike to work, it's 6 miles away. That would be very nice, wouldn't be a strenuous bike trip. I could do it and still be work ready. [The reason I don't is] way too much traffic, I could not safely get there."
-Christina, Carroll County



For more information

Charlene Mingus | Active Transportation Planner

bikebaltoregion@publicinput.com | publicinput.com/bikebaltoregion | www.baltometro.org

