



---

# Patapsco Regional Greenway (PRG) Updates

BPAG

November 20, 2024

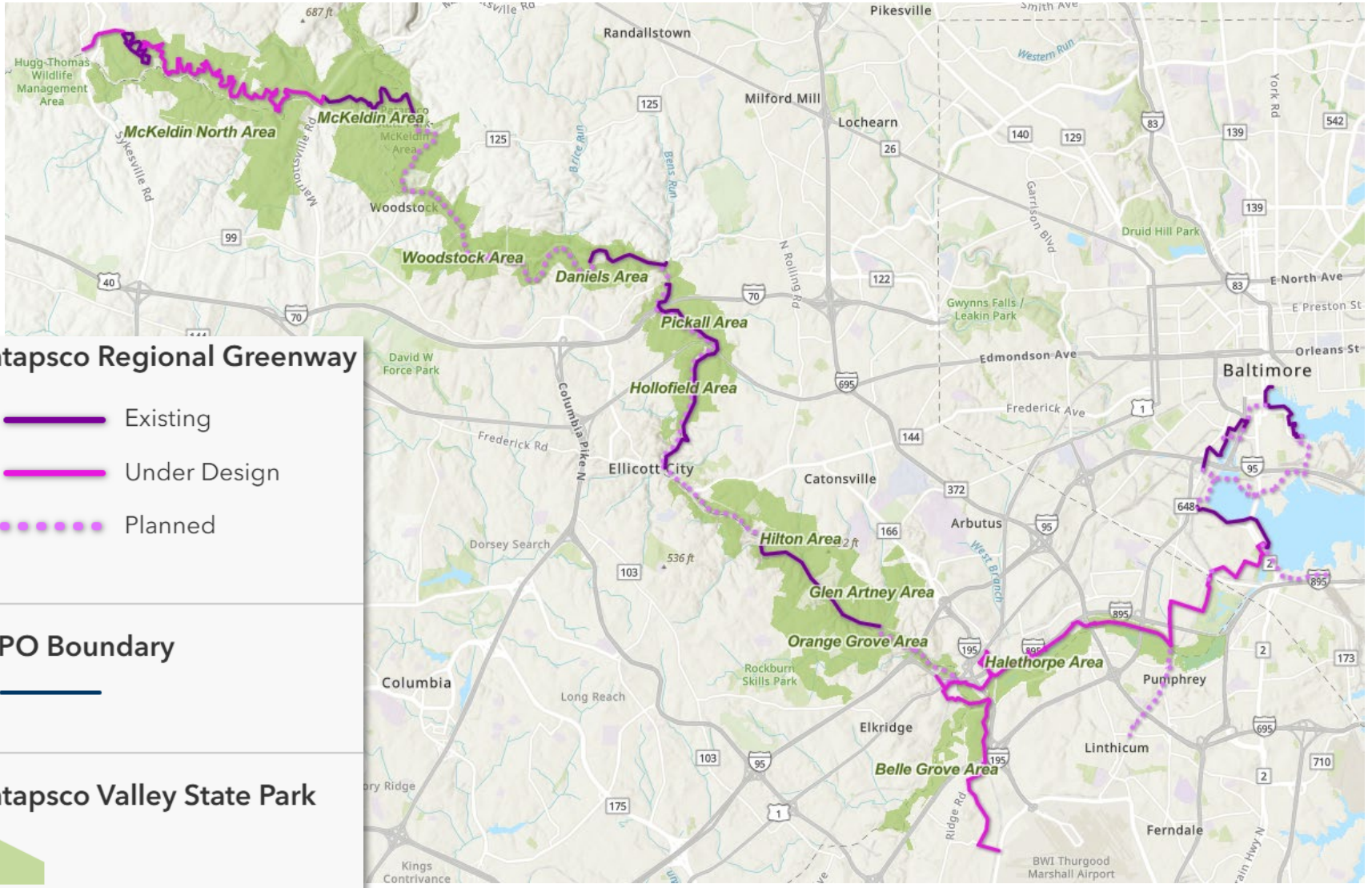


# PRG Plan

- The [Patapsco Regional Greenway Plan](#) was approved by the Baltimore Regional Transportation Board (BRTB) in 2017
- The Plan maps the main alignment of a 40-mile greenway
- Connecting Sykesville in Carroll County to the Baltimore Inner Harbor and traversing the Patapsco Valley in Anne Arundel, Baltimore, and Howard Counties
- Parts of the trail are already constructed and open for use
- Remaining segments will be designed and constructed based on jurisdictional priorities and funding availability

[baltometro.org/transportation/plans/patapsco-regional-greenway](https://baltometro.org/transportation/plans/patapsco-regional-greenway)

# PRG Web Map



**Patapsco Regional Greenway**

- Existing
- Under Design
- Planned

---

**MPO Boundary**

- 

---

**Patapsco Valley State Park**

-

# Existing PRG Segments

- **Carroll County**
  - Freedom Park Trail (1.6 miles)
- **Baltimore County**
  - Grist Mill Trail (5.2 miles)
- **Baltimore City**
  - Gwynns Falls Trail at the Middle Branch (1.6 miles)
  - Gwynns Falls Trail at Ridgely's Cove (1 mile)
  - Jones Falls Trail at the Inner Harbor (0.4 miles)
  - Waterfront Promenade (1.3 miles)
  - Port Covington Waterfront Parks (1.2 miles)

# PRG Segment Design Projects

- **Final Design Underway**
  - Elkridge to Guinness Segment (1.8 miles)
- **Preliminary Design Completed**
  - Sykesville to McKeldin Segment
    - Sykesville to Freedom Park (0.4 miles)
    - Freedom Park to McKeldin (7.5 miles)
- **Preliminary Design Underway**
  - Guinness to Southwest Area Park Segment (5.3 miles)
  - Stoney Run Trail (4 miles)
  - Cherry Hill Segment (1.7 miles)



# Elkridge to Guinness Segment



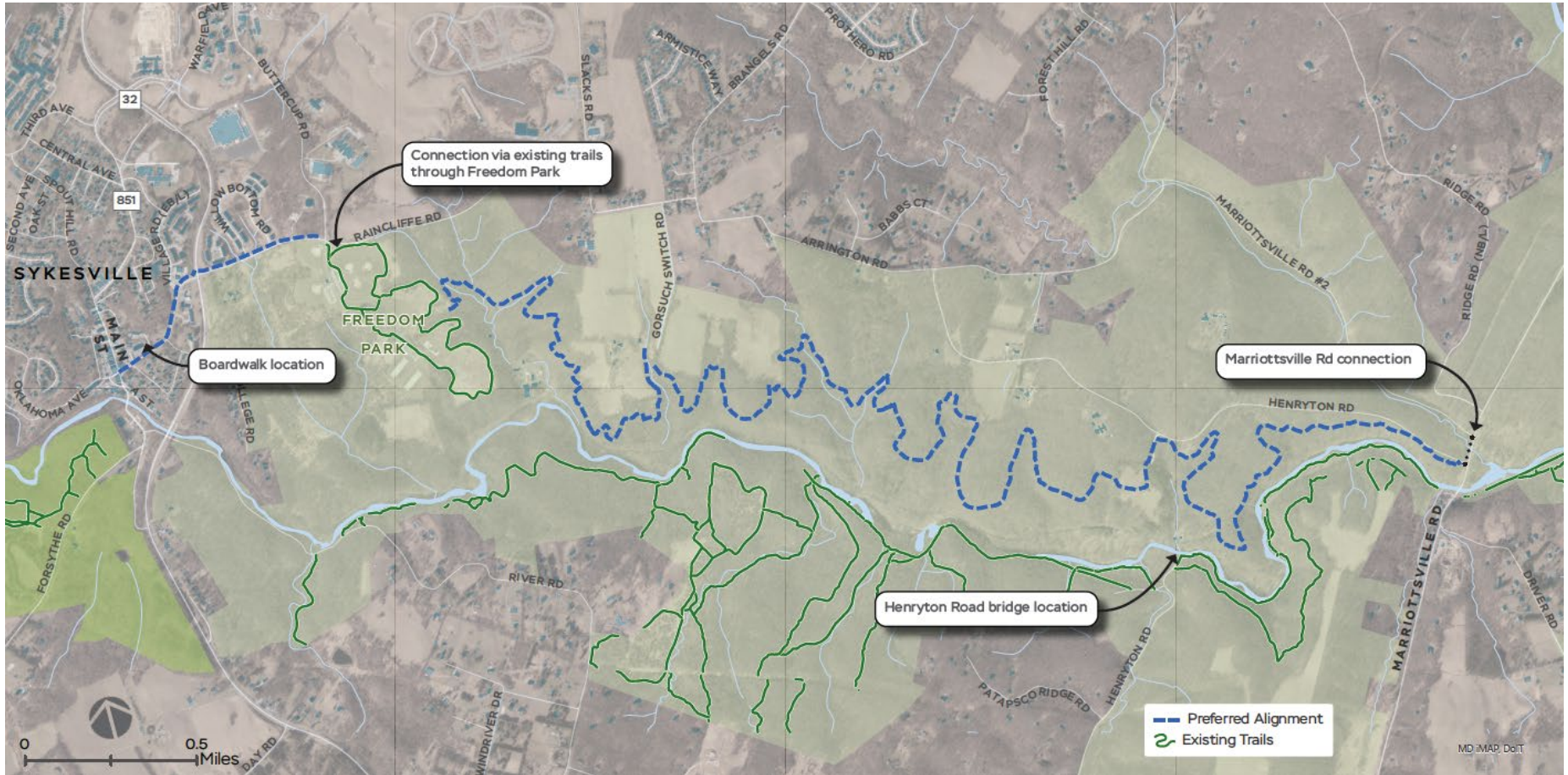


# Elkridge to Guinness Segment

- Length: 1.8 miles
- Funded for 100% design
- 60% design underway
- 30% design completed in 2021
- Sponsored by Howard County and Baltimore County
- Connects Patapsco Valley State Park, Main Street in Elkridge, and the Guinness Open Gate Brewery



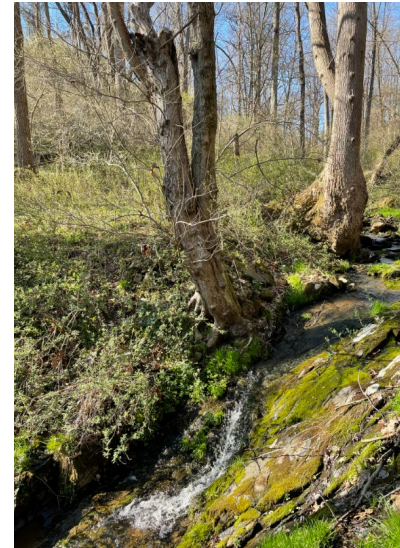
# Sykesville to McKeldin Segment



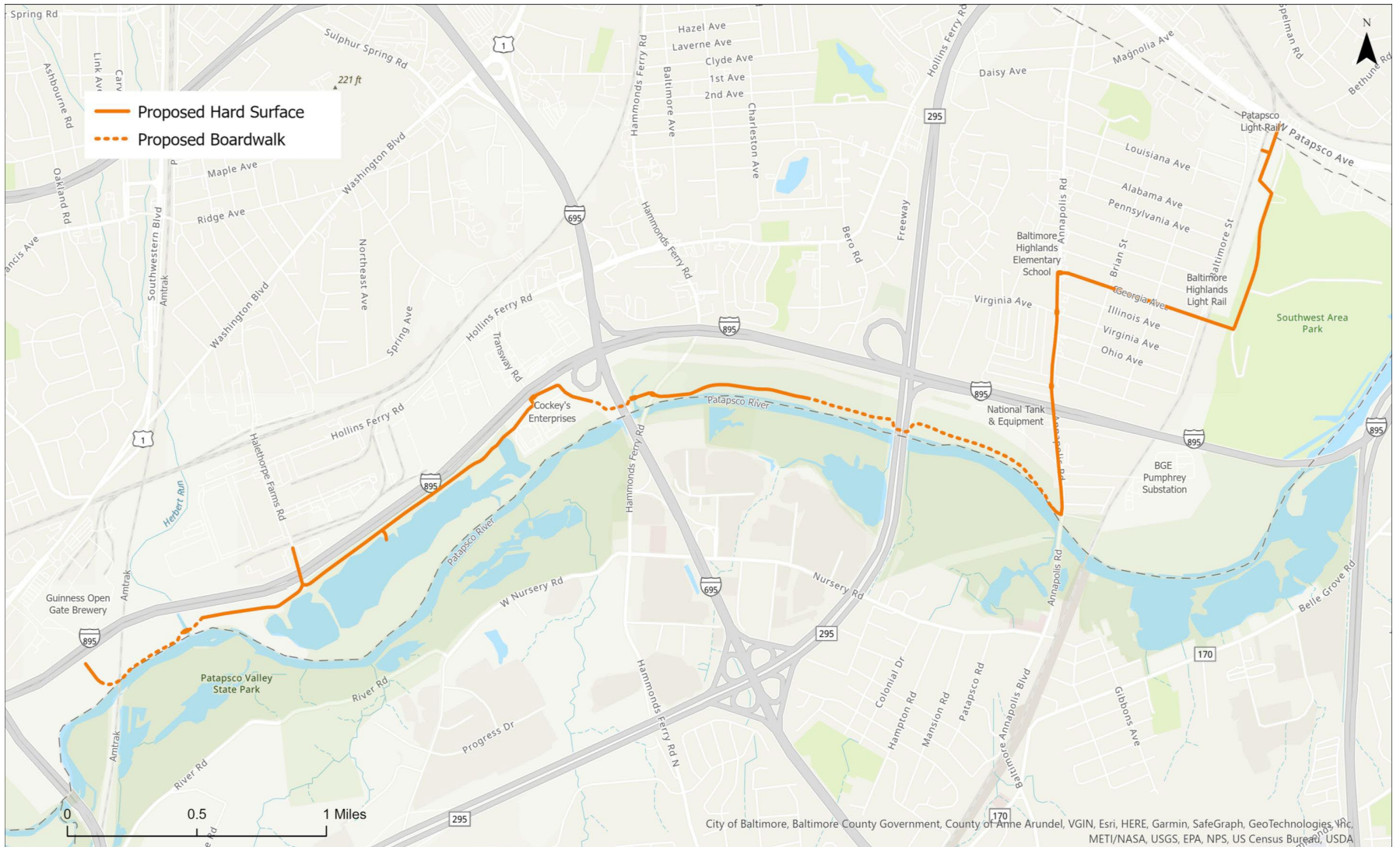


# Sykesville to McKeldin Segment

- 30% design completed in 2022
- Sponsored by Carroll County
- Connects the City of Sykesville to/through Patapsco Valley State Park
- Sykesville to Freedom Park
  - Length: 0.8 miles (0.4 miles new)
  - Shared use path, sidewalk, boardwalk
- Freedom Park to McKeldin
  - Length: 7.5 miles
  - Natural surface trail, bridges, boardwalk
  - Includes intersection upgrades and potentially a high-visibility crossing



# Guinness to Southwest Area Park Segment





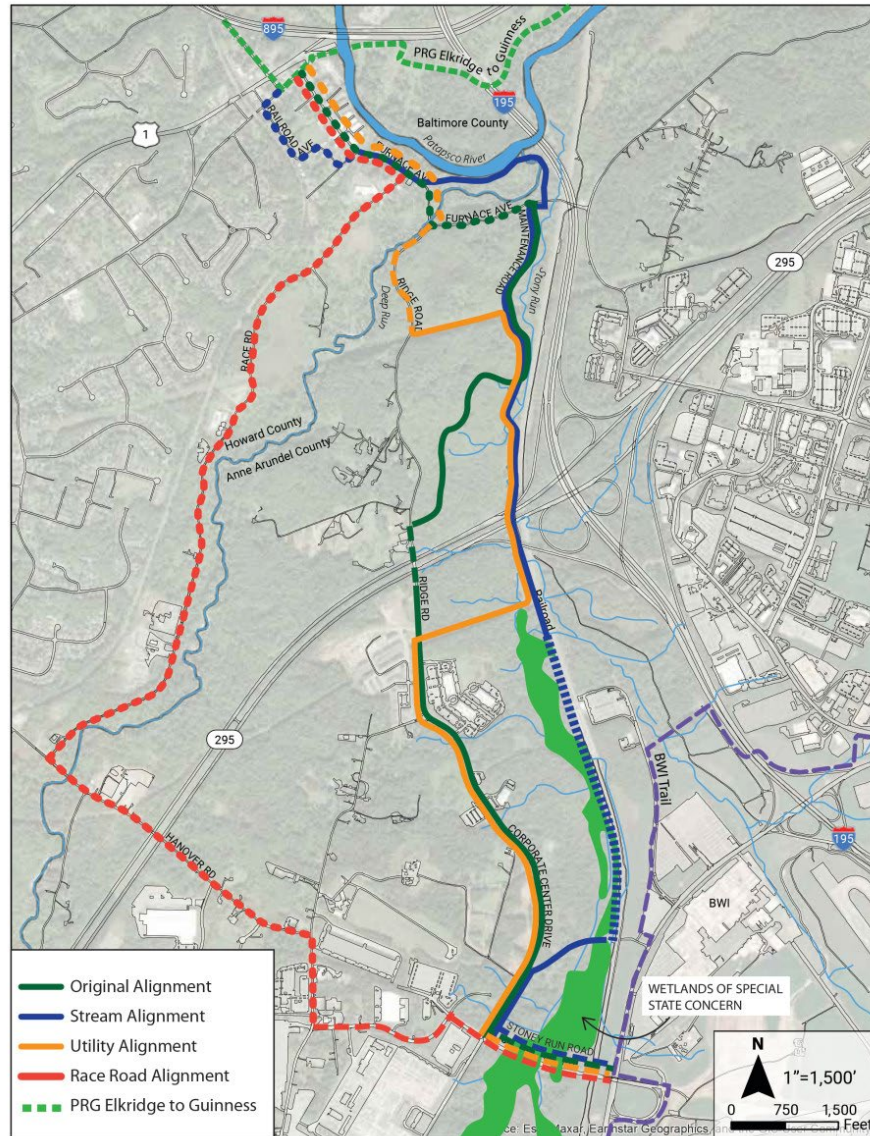
# Guinness to Southwest Area Park Segment

- Length: 5.3 miles
- 30% design nearing completion
- Sponsored by Baltimore County
- Connects to Elkridge to Guinness segment on the western end
- Connects to Southwest Area Park, MDOT MTA Patapsco Light Rail Station, and Patapsco Avenue on eastern end
- Shared-use path, boardwalk, bridges, RRFPP crossings, sidepath, and bike boulevard





# Stoney Run Trail



# Stoney Run Trail

- Length: 4 miles
- 30% design nearing completion
- Sponsored by Anne Arundel County
- Connects Historic Elkridge to BWI Trail
- Preferred alignment is a combination of the Stream and Utility options
- Public comment period
  - November 20 through December 20
- Public meeting
  - Dec 11 at 6:00 p.m.
  - Severn Branch of the Anne Arundel County Public Library System





# Cherry Hill Segment



— Cherry Hill Segment



# Cherry Hill Segment

- Length: 1.7 miles
- 30% design underway
- Sponsored by Baltimore City
- Southern end connects to planned MDOT MTA Patapsco Ave Pedestrian and Bicycle Bridge
- Northern end connects trailhead #9 of the Gwynns Falls Trail/Middle Branch Trail near the intersection of S. Hanover Street and Reedbird Avenue



# PRG Operations and Maintenance Guidelines Project

- Kickoff meeting held this week
- Project approach
  - Existing conditions, policies, and data review
  - Stakeholder interviews and surveys
  - Site visits
  - Develop draft operations and maintenance guidelines



Task 1  
Project  
Management



Task 2  
Existing Conditions,  
Policies, and Data  
Review



Task 3  
Develop Operations  
and Maintenance  
Guidelines



Task 4  
Stakeholder  
Engagement



Task 5  
Final Plan

# For More Information

---

**Charlene Mingus** | Active Transportation Planner

410.732.0500 x1008 | [cmingus@baltometro.org](mailto:cmingus@baltometro.org) | [www.baltometro.org](http://www.baltometro.org)



@BALTOMETROCOUNCIL



@BALTIMORE METROPOLITAN COUNCIL



@BALTIMORE METROPOLITAN COUNCIL

