



Baltimore Regional Transportation Board

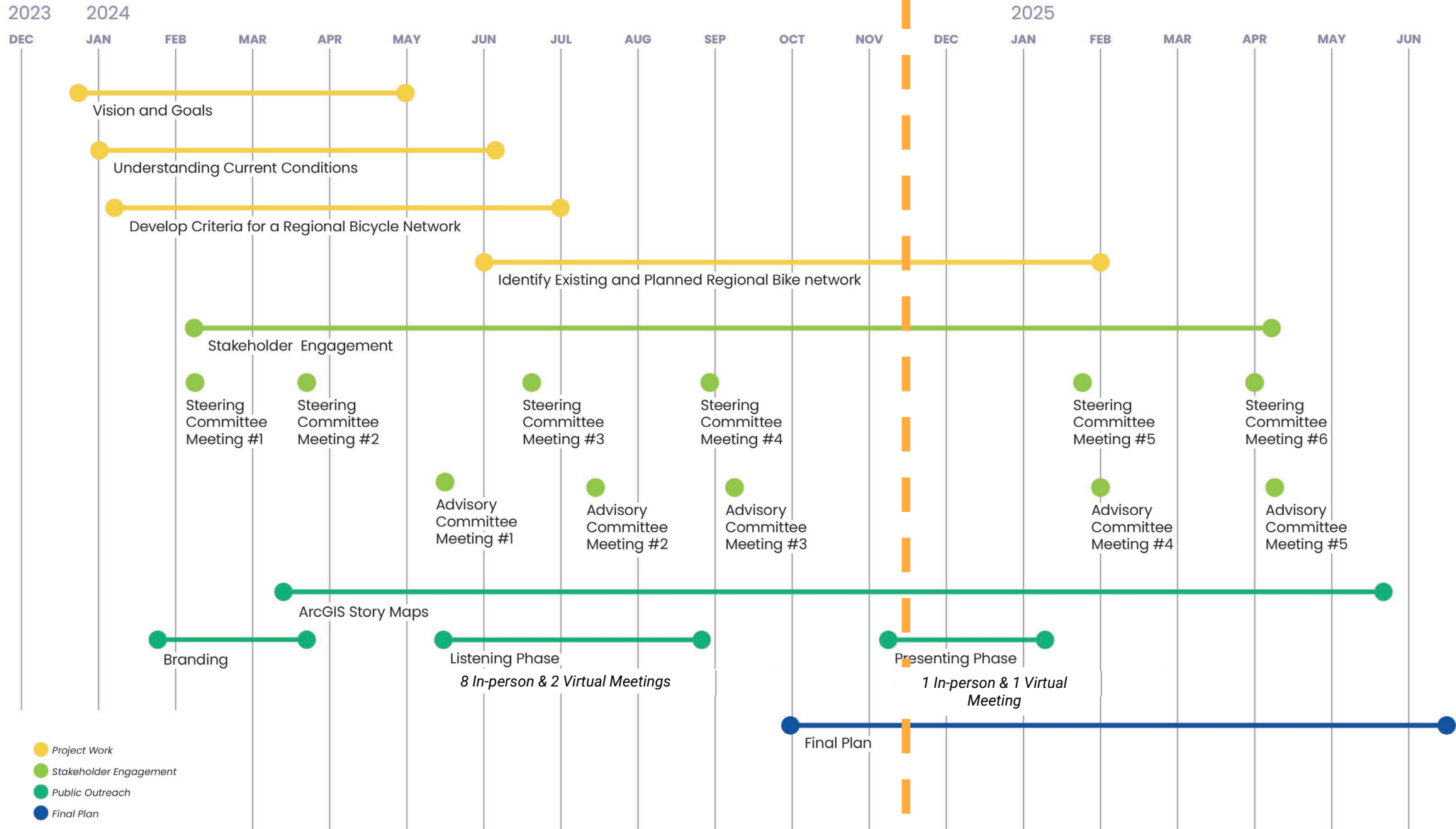
Bikeable Baltimore Region (BBR): A Plan for a Safe and Connected Bike Network

BPAG

November 20, 2024



Schedule



- Project Work
- Stakeholder Engagement
- Public Outreach
- Final Plan

Presenting Phase

- **Share the Proposed Regional Bike Network**
 - Feedback will help make sure this bike network best serves the region
- **Comments welcome until Jan 10, 2025**
 - [Project website](#) and [interactive StoryMap](#)
 - Comment map and survey
- **Public Meetings**
 - **In-Person, December 10 at 6:00 p.m.**
Baltimore Unity Hall
 - **Virtual, December 12 at 6:00 p.m.**



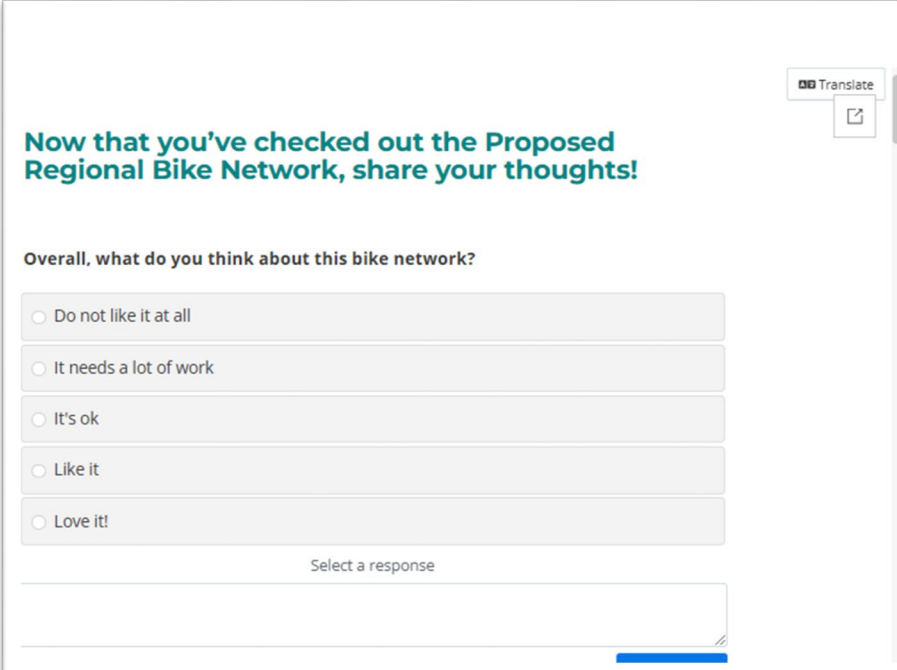
Presenting Phase

- **Share the Proposed Regional Bike Network**
 - Feedback will help make sure this bike network best serves the region
- **Comments welcome until Jan 10, 2025**
 - [Project website](#) and [interactive StoryMap](#)
 - Comment map and survey
- **Public Meetings**
 - **In-Person, December 10 at 6:00 p.m.**
Baltimore Unity Hall
 - **Virtual, December 12 at 6:00 p.m.**



Presenting Phase Public Feedback

- 20 survey respondents as of Nov 19
- **Top takeaways**
 - **What are you most excited about?**
 - Safety and protection for bicyclists
 - Connectivity across communities
 - Complete Streets and multi-modal infrastructure
 - Creative and visionary planning
 - **What do you think could be improved?**
 - Existing gaps between bike lanes and paths
 - More protected bike lanes
 - Concern network is limited by using current plans



Now that you've checked out the Proposed Regional Bike Network, share your thoughts!

Overall, what do you think about this bike network?

- Do not like it at all
- It needs a lot of work
- It's ok
- Like it
- Love it!

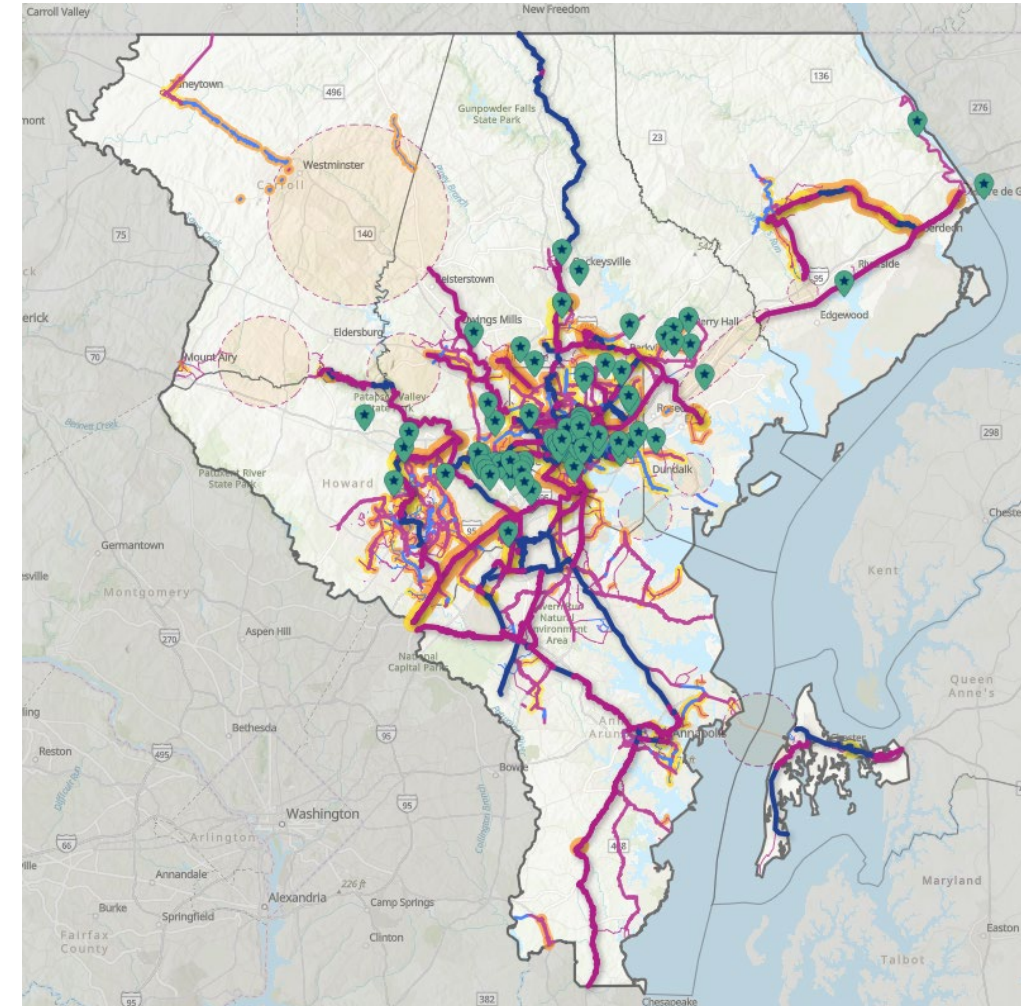
Select a response

Translate

Presenting Phase Public Feedback

- 72 map comments as of Nov 19

Jurisdiction	Number of Comments
Anne Arundel County	0
Baltimore City	31
Baltimore County	32
Carroll County	0
Harford County	3
Howard County	6
Queen Anne's County	0



Presenting Phase

- **Thank you for helping spread the word!**
- **Ways to promote the comment period**
 - Share during announcements at meetings
 - Include in your newsletters
 - Print the flyer and hang it around your community ([Flyer PDF](#))
 - Share BMC social media posts and event invites
 - [Facebook post](#)
 - Facebook events
 - [In-person meeting](#)
 - [Virtual meeting](#)



In-Person Public Meeting

Agenda

- **Presentation overview**
 - Vision and goals
 - What we've heard
 - Defining the network
- **Breakout groups**
 - Attendees discuss network at region level
- **Report out**
 - Attendees report back to the whole group
- **Activity stations**
 - Opportunity to provide more detailed feedback (Maps of region: North, South, East, West)
 - Information on project next steps



In-Person Public Meeting



December 10, 6:00 p.m.



Baltimore Unity Hall
1505 Eutaw Pl
Baltimore, MD 21217

Meeting-in-a-Box

- Focuses on providing enough information about the project for someone to host their own outreach, in conjunction with materials and sample materials that would allow that person to facilitate that outreach.
- **Introduction**
 - Brief BBR intro
 - Why we are developing a meeting-in-a-box
- **How to Use This Kit**
 - What a meeting-in-a-box is and how to use it
- **Bikeable Baltimore Region Overview**
 - Project details to facilitate conversations
- **Engagement Options**
 - Hosting a Community Meeting (Virtual or In-Person)
 - Sample agenda
 - Sample invitation
 - Presentation (direct presentation for download)
 - Discussion questions/facilitation
 - Survey questions
- **Email Outreach**
 - Sample email

Proposed Regional Bike Network

- Includes bike routes that are comfortable and safe to bike on, based on current plans for the Baltimore region
- Routes are either well-separated from traffic or are on roads with low speed limits and little car traffic
- **Comments welcome until January 10, 2025**



publicinput.com/bikebaltoregion



Regional Bikeways

- Existing (Blue line)
- Planned (Purple line)

Community Bikeways

- Existing (Blue line)
- Planned (Purple line)

Local Bikeways

- Existing (Blue line)
- Planned (Purple line)

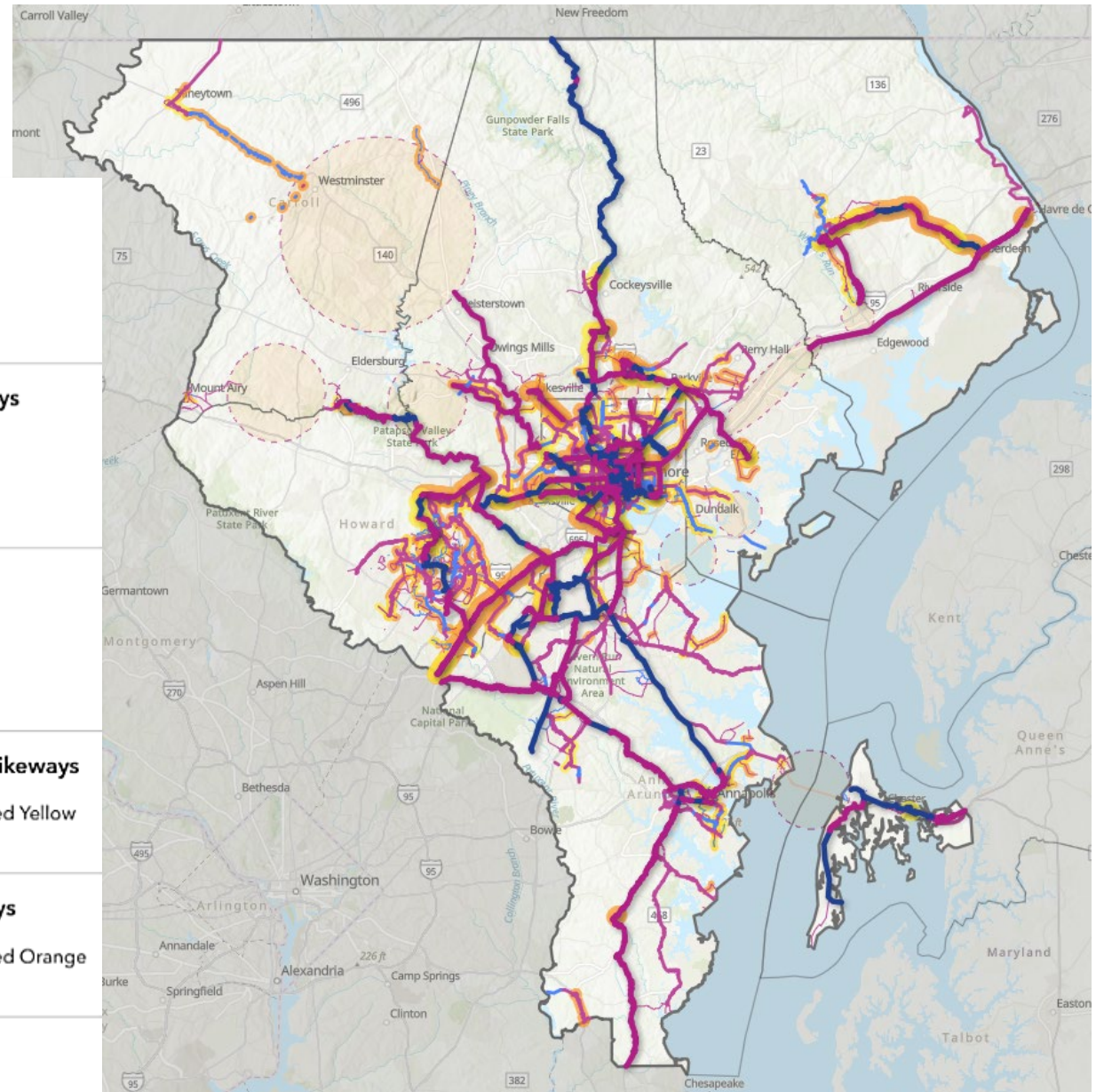
Less Comfortable Bikeways

- Highlighted Yellow (Yellow line)

High Stress Bikeways

- Highlighted Orange (Orange line)

Regional Gaps



For more information

Charlene Mingus | Active Transportation Planner

bikebaltoregion@publicinput.com | publicinput.com/bikebaltoregion | www.baltometro.org

