

Trails Dashboard

Pavement Condition Index

July 17, 2024



Overview

- Background
- Pavement Condition Index
- Methodology
- Lessons Learned



Overall Trail Network

- 48+ miles paved off-street trails
- 35+ miles maintained by Arlington



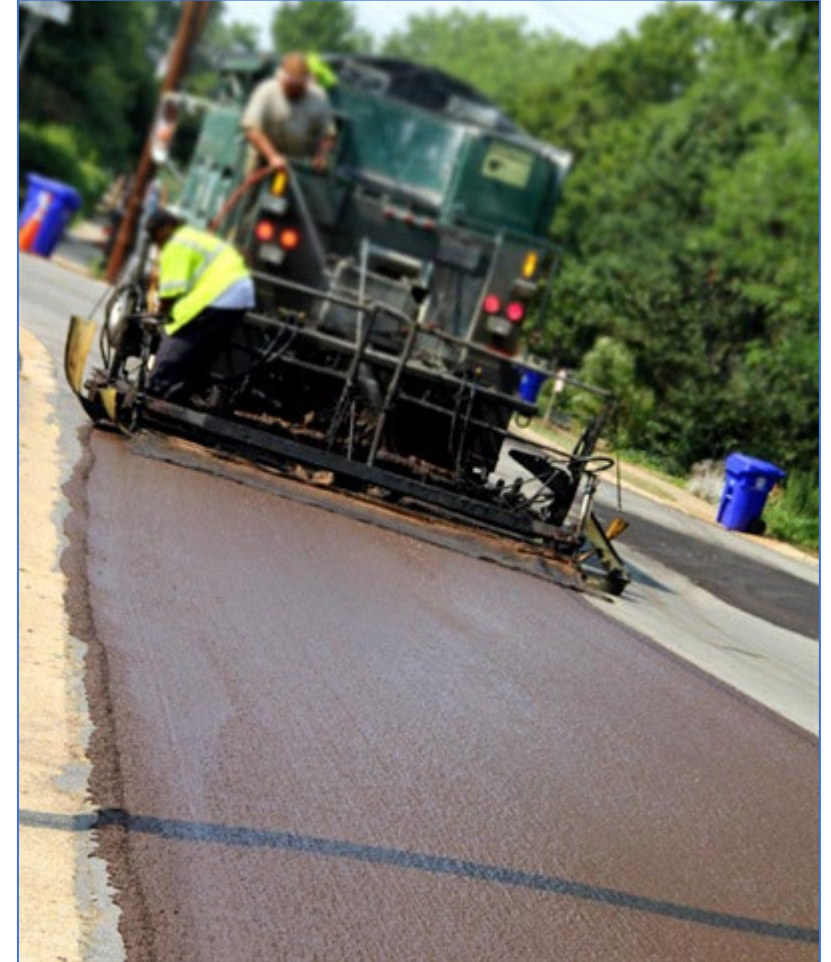
Background

- Public Spaces Master Plan (2019)
 - Hiking and paved trails among top 3 requested assets during engagement
- Heavy weekly use (last 7 days):
 - W&OD (Columbia Pk) – 10,308
 - Custis Trail (Rosslyn) – 9,536
 - Crystal City Connector – 5,304



Pavement Condition Index (PCI)

- Based on pavement ride quality, cracking, potholes, streaking, washboarding, flushing, and crowning
- PCI scores calculated following methods in American Society for Testing and Materials D6433
 - Based on the “distress” observed on the surface of pavement



REPRESENTATIVE PAVEMENT SURFACE*



PCI: 100



PCI: 60



PCI: 40



PCI: 5

Source: Wisconsin DOT

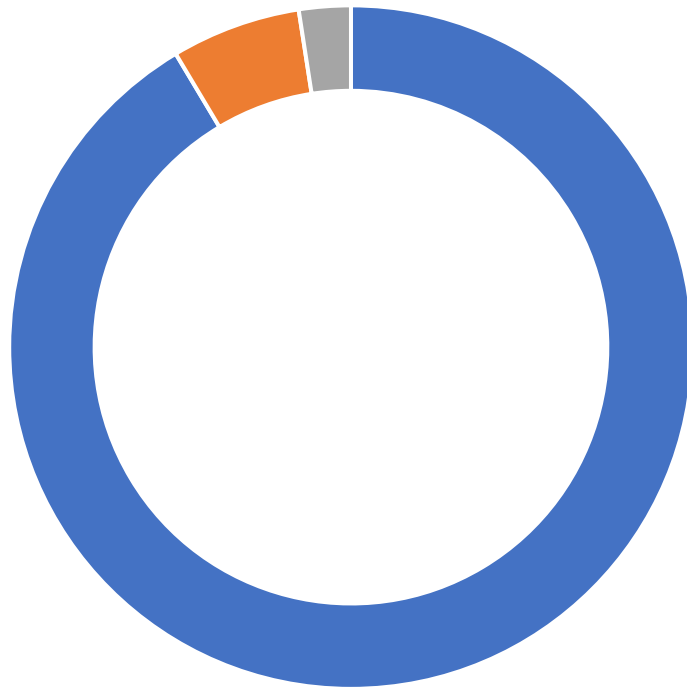
Methodology

- Digital modeling of 24 miles of trail surfaces (2018)
 - Lasers to detect imperfections
- Visual tracking on-foot, then by vehicle (2022)
- No pavement testing, exploratory probing, dismantling, or subsurface studies were performed





2022 Trail Surface Results



■ Asphalt ■ Concrete ■ Pavers

- 24.4 mi. studied
 - 22.4 mi. asphalt (Avg score 77)
 - 1.5 mi. concrete (Avg score 87)
 - 0.6 mi. pavers (Avg score 98)







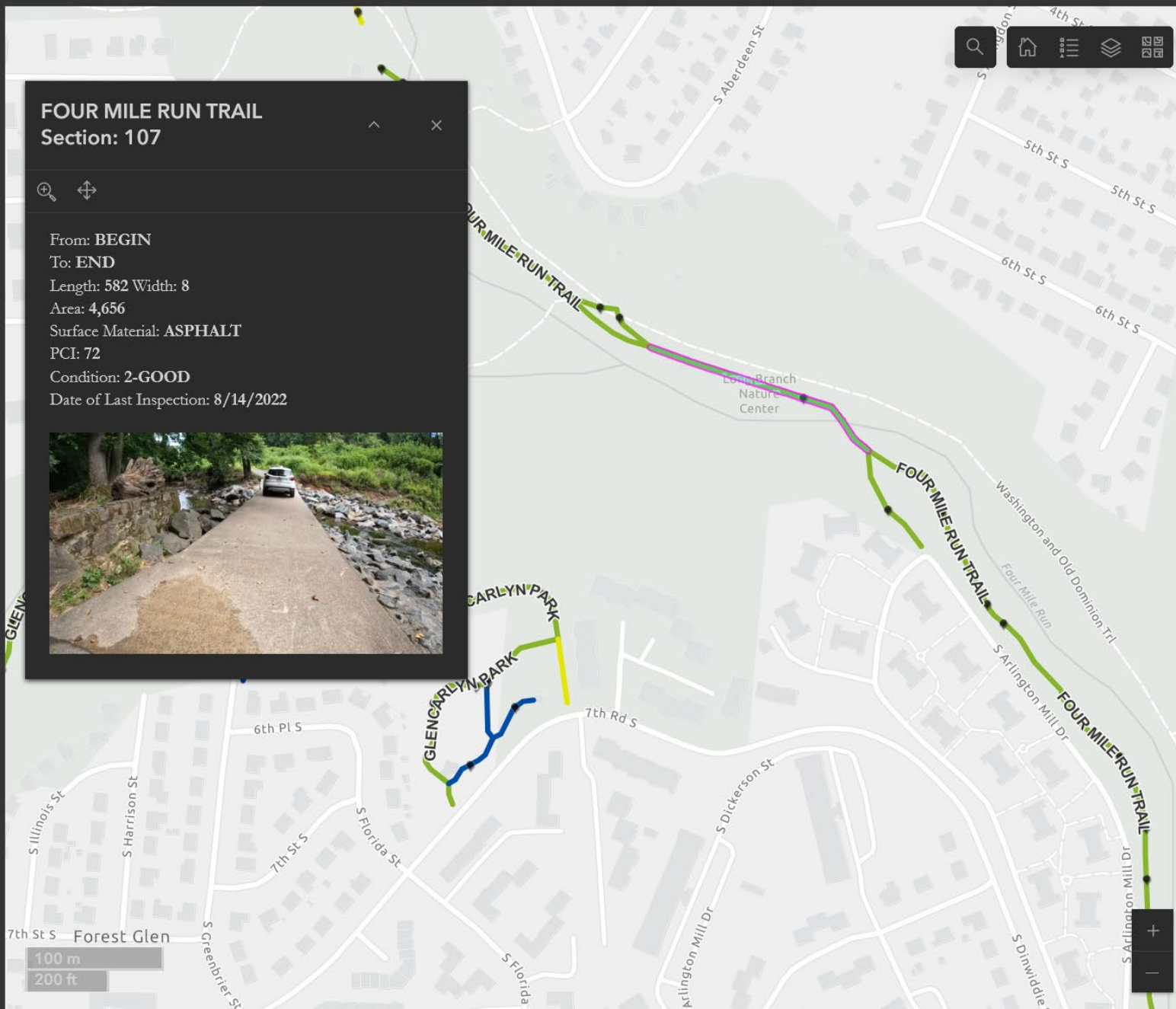
Shaping a World of Trust



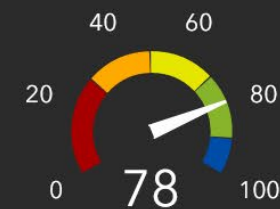
All Segments

- FOUR MILE RUN TRAIL #100 from BEGIN to END
- FOUR MILE RUN TRAIL #101 from BEGIN to END
- FOUR MILE RUN TRAIL #103 from BEGIN to END
- FOUR MILE RUN TRAIL #104 from BEGIN to END
- FOUR MILE RUN TRAIL #105 from BEGIN to END
- FOUR MILE RUN TRAIL #107 from BEGIN to END
- FOUR MILE RUN TRAIL #108 from BEGIN to END
- FOUR MILE RUN TRAIL #109 from BEGIN to END
- FOUR MILE RUN TRAIL #111 from BEGIN to END
- FOUR MILE RUN TRAIL #295 from BEGIN to END
- FOUR MILE RUN TRAIL #9 from BEGIN to END
- GLENCARLYN PARK #195 from BEGIN to END
- GLENCARLYN PARK #196 from BEGIN to END
- GLENCARLYN PARK #197 from BEGIN to END
- GLENCARLYN PARK #198 from BEGIN to END
- GLENCARLYN PARK #199 from BEGIN to END
- GLENCARLYN PARK #200 from BEGIN to END

Link to [Current Conditions \(Excel\)](#)
Link to [Current Conditions \(PDF Map\)](#)
Link to [Current Conditions \(Google\)](#)
Link to [FieldApp](#)



Average PCI



Average PCI

Total Miles

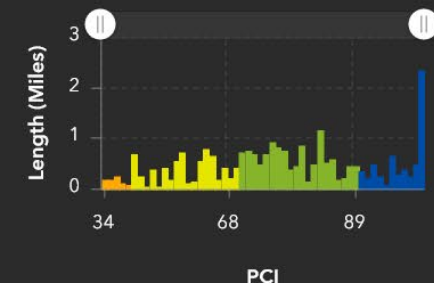
Condition



Condition

Surface Type

PCI Chart





Lessons Learned

- PCI studies have helped the County prioritize resources
 - Next review in 2026
- Average PCI score of 78 for entire network (“Good” range) as of 2022
 - Roadway PCI is 83.3 (November 2023)
- Longevity approx. 25-30 years
- Tree root heaving biggest factor in trail surface degradation

Public-Facing Webpages

- Trail Pavement Condition mapping:
 - <https://www.arlingtonva.us/Government/Departments/Parks-Recreation/Locations/Off-street-trails/Trail-Pavement-Condition>
- Public Spaces Master Plan:
 - <https://www.arlingtonva.us/Government/Projects/Plans-Studies/Comprehensive-Plan/Public-Spaces-Master-Plan>

Questions?

Elwyn Gonzalez, AICP

Transportation Planner

egonzalez2@arlingtonva.us

