



# Overview: Vision for a Regional Bicycle Network Project

*January 17, 2024*



# Vision for a Regional Bicycle Network



## Purpose

Develop a regional bicycle network vision which can be used to create an equitable and connected bicycle network that is comfortable for and all ages and abilities.

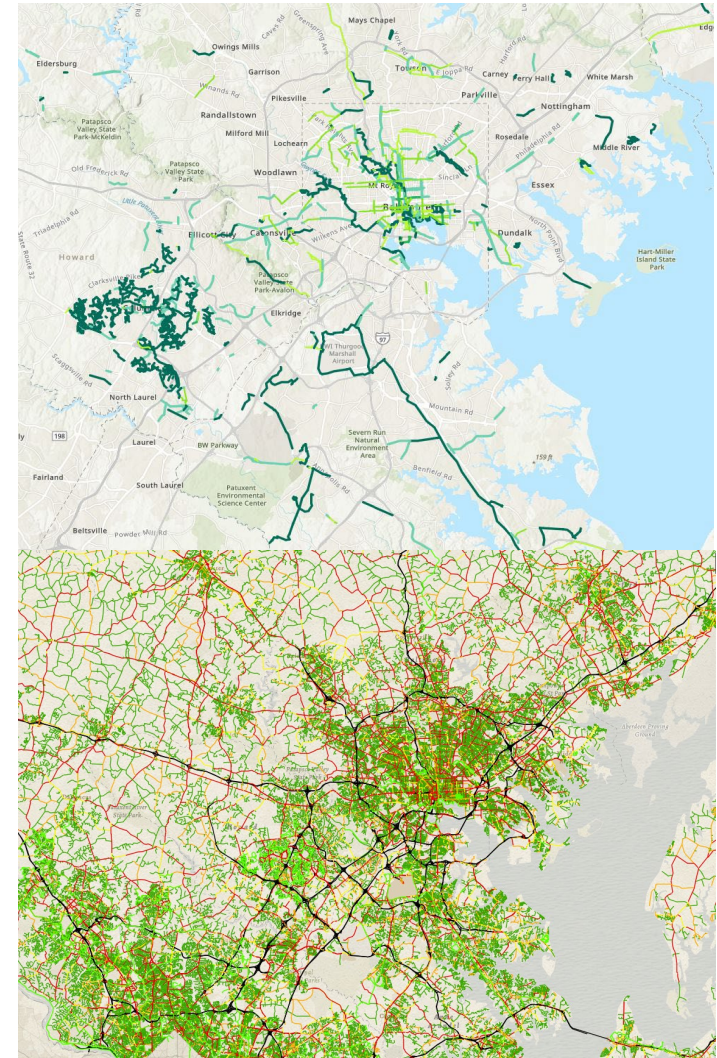
Such a network will benefit the region by improving equitable access to housing, job opportunities, transit, core services, and recreational amenities while also increasing active transportation rates.

Broadening transportation choices and potentially increasing active transportation use can increase job opportunities, increase physical activity, reduce motor vehicle traffic congestion on roadways, provide tourism opportunities, and increase economic competitiveness.

# Vision for a Regional Bicycle Network

## Discover

- Identify existing and planned bicycle infrastructure
- Review existing programs and initiatives
- Assess the network's ability to provide low-stress connections
- Analyze mode share, equity, bicycle demand areas, and safety
- Identify a diverse mix of key stakeholders
  - Partner agencies, local governments, community and advocacy groups, and community members



Regional Bicycle Facilities Inventory & Maryland Bicycle LTS

# Vision for a Regional Bicycle Network



## Engage

- Focus will be on an equitable engagement approach with opportunities for authentic and meaningful public engagement with an emphasis on broad and diverse input
- On-site handlebar interviews
- Steering and advisory committees
- In-person and virtual public meetings and forums
- Online project website, StoryMaps, and surveys
- Public meeting in a box



"I love being able to bike my five- and eight-year old to school every morning."

- KATIE, CANDLER PARK



"I enjoy the health benefits of walking – not just the physical health benefits also the mental health benefits. I like taking in the sights and sounds around me . . . It's nice to walk in Midtown but in South Fulton we need wider sidewalks that don't stop all the sudden."

- KAYLA, SOUTH FULTON COUNTY NEAR THE AIRPORT



"Even though I drive to work, I like to walk to get lunch because there are a lot of places to go near the office. I could imagine biking to work if the roads were friendlier."

- JACK, WEST SIDE

Handlebar interviews, Walk, Bike, Thrive! (Atlanta Regional Commission)



# Vision for a Regional Bicycle Network



## Develop

- Identify a regional bicycle network that changes the way people move in and around the Baltimore region
- Develop an implementation strategy
- Outline policies and programs that support increasing bike mode share

## Produce

- Create a graphically rich and ready-to-implement document and online resources that serves as a tool for BMC and regional partners
- Lead consultant, Alta Planning + Design with Assedo Consulting as DBE partner



Photo credit: Alta Planning + Design, Inc.

# Vision for a Regional Bicycle Network



## Task 1 – PMP & SEP

- Project management plan
- Stakeholder engagement plan
- Steering and advisory committee coordination

## Task 2 – Vision, Goals, & Objectives

- On-site handlebar interviews
- Develop vision, goals, and objectives

## Task 3 – Develop Criteria

- QC review regional bicycle facilities inventory
- Identify the regional bicycle network criteria



Photo credit: Alta Planning + Design, Inc.

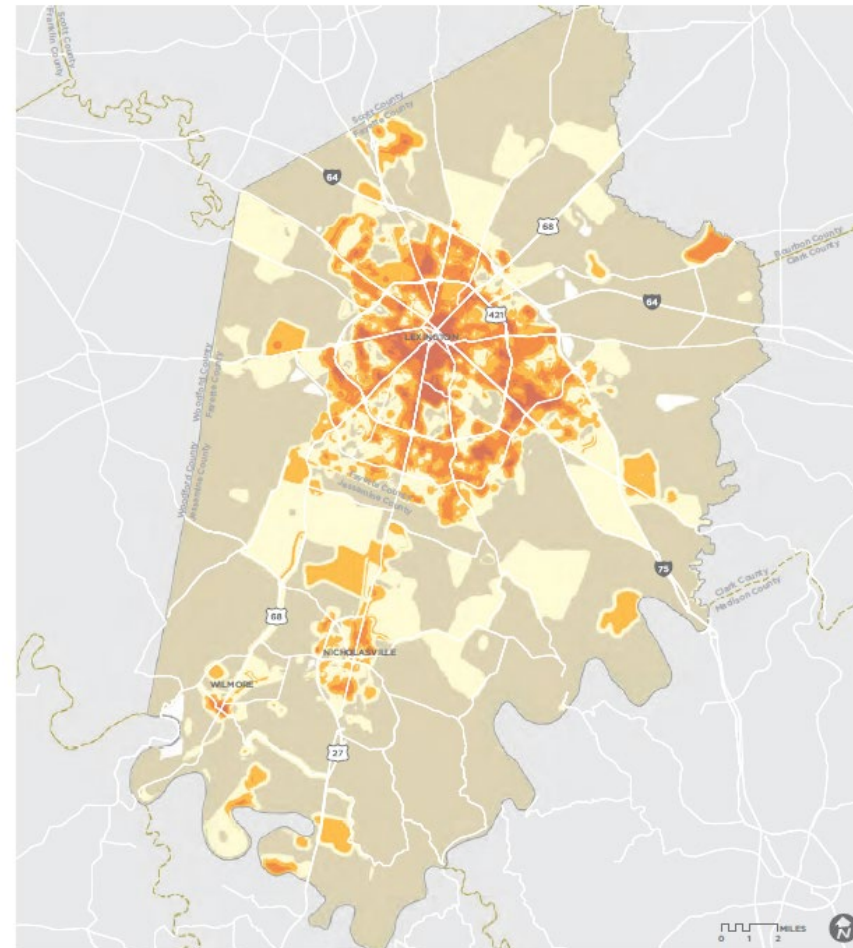
# Vision for a Regional Bicycle Network

## Task 4 – Public Outreach

- Public meeting in a box
- StoryMap with narratives, interactive maps, online survey
- Public meetings throughout region
  - Ten in-person
  - One virtual
- Two public forums
  - One in-person
  - One virtual
- Steering and advisory committees

## Task 5 – Current Conditions

- Analysis of mode share, equity, bicycle demand areas, and safety



**DEMAND ANALYSIS**  
**Fayette County and**  
**Jessamine County**

**COMPOSITE DEMAND**  
Highest Demand  
Lowest Demand

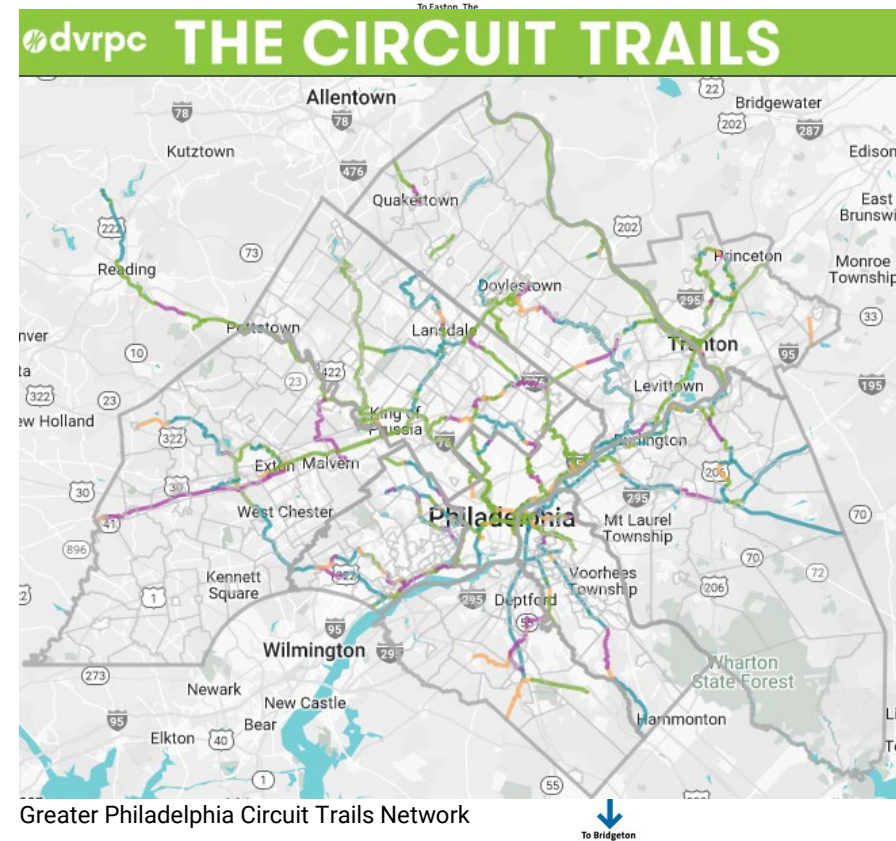
Regional Bicycle Facilities Inventory & Maryland Bicycle LTS



# Vision for a Regional Bicycle Network

## Task 6 – Identify Regional Network

- Identification of Regional Bicycle Network
- Implementation strategy
  - Priority gaps (5 years)
  - Intermediate network expansion opportunities (10 years)
  - Long-range network expansion opportunities (More than 10 years)

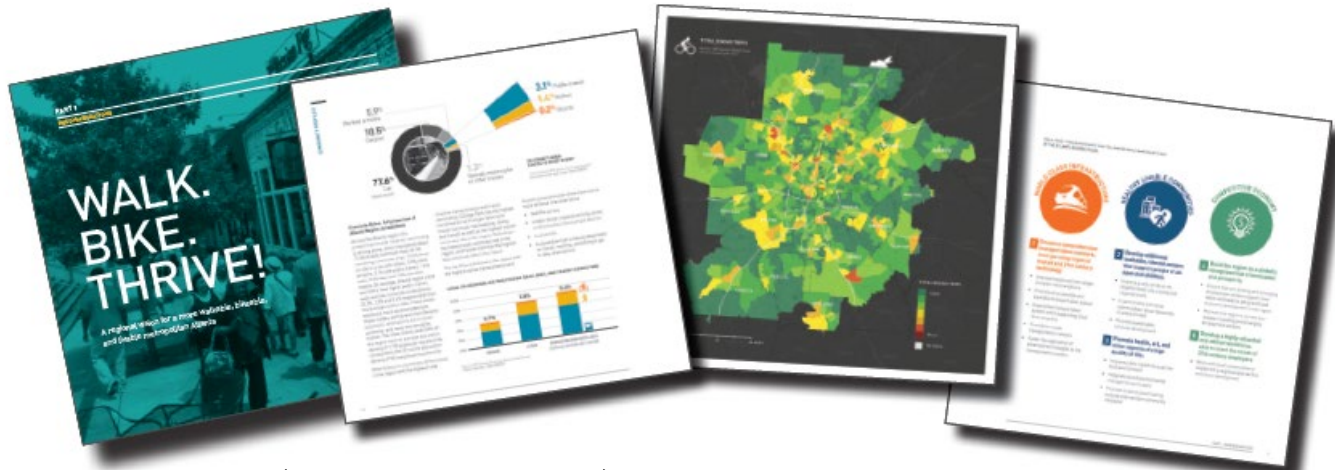




# Vision for a Regional Bicycle Network

## Task 7 – Final Plan

- Well organized and visually compelling final plan
  - Documentation of work from previous tasks
  - Network implementation cost estimates
  - Implementation strategies and recommendations
  - Benefit analysis
  - Identify performance measures
- Customized handout and presentation
- ArcGIS StoryMap summarizing plan



Page 10 of 10

410.732.0500 ext. 1008 | cmingus@baltometro.org | [www.baltometro.org](http://www.baltometro.org)

