

Pedestrian and Bike Data Before and After Improvements. Montgomery Road, Elkridge, Howard County

Chris Eatough, 1/17/24



Howard County: Montgomery Road at Steepridge Drive

- **Before County**
 - June 1 – June 7, 2022
- **After Count**
 - Oct 23 – Oct 30, 2023
- **Description**
 - New sidewalk on both sides of Montgomery Rd between Rowanberry Dr and Timberlee Rd
 - New pedestrian crossing across Montgomery Rd with refuge island just west of Steepridge Dr
- **Purpose of counts**
 - Quantify change in bicycle and pedestrian volumes after implementation of new sidewalks and pedestrian crossing



Montgomery Road after improvements

- New sidewalks both sides
- New crosswalk with refuge island



Howard County: Montgomery Road at Steepridge Drive

Ped/Bicycle Crosswalk Counts

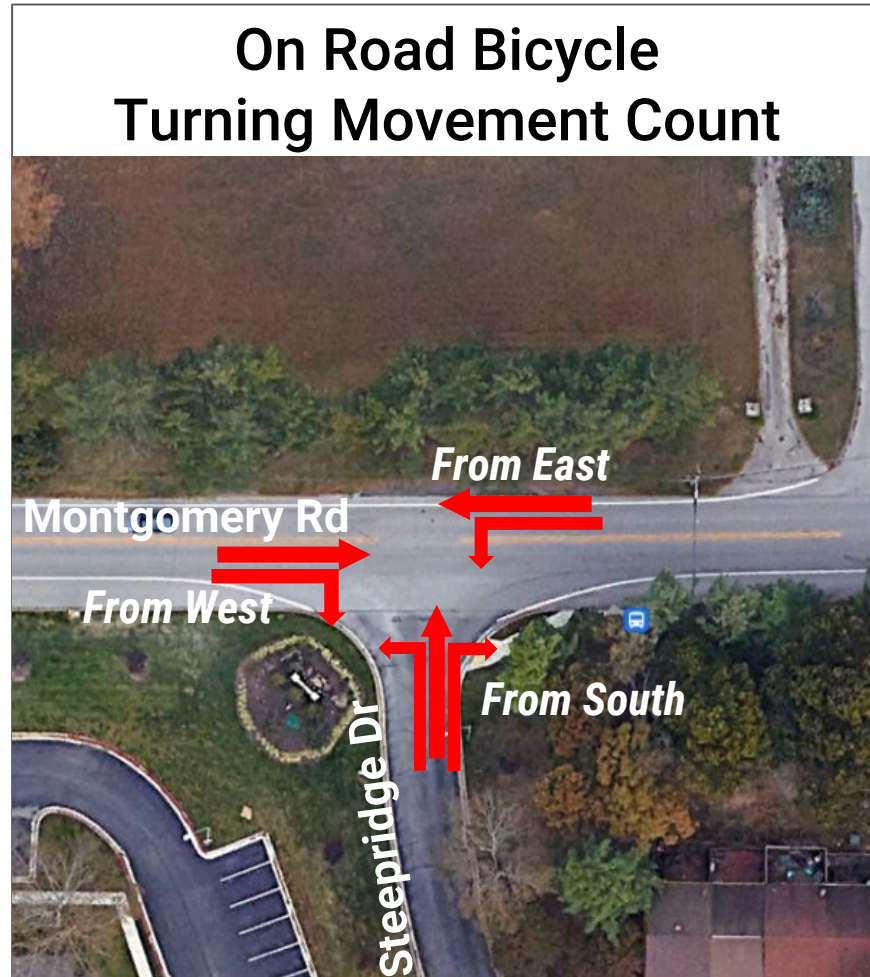


Howard County: Montgomery Road at Steepridge Drive

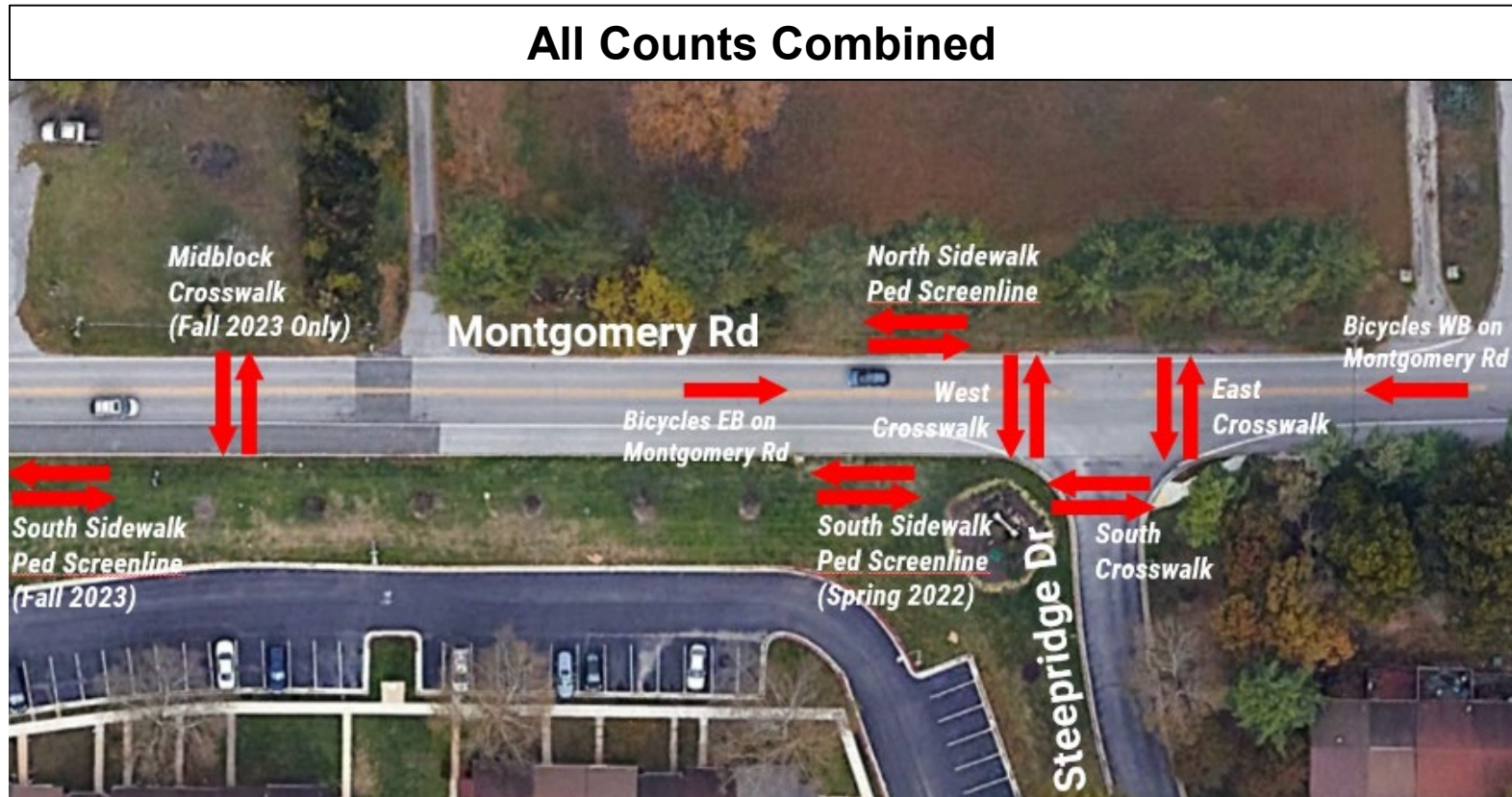
Pedestrian Screenline Count Locations



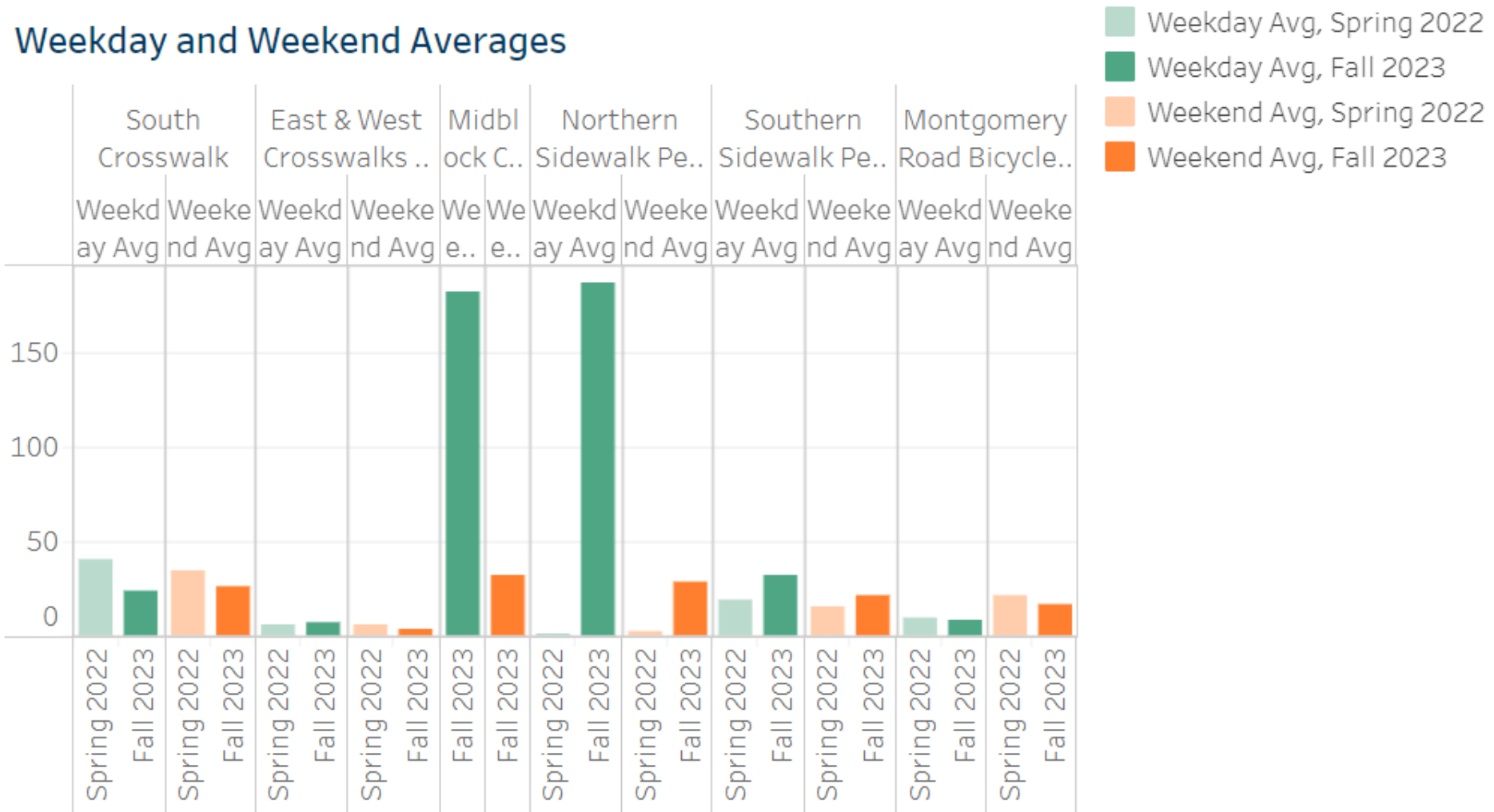
Howard County: Montgomery Road at Steepridge Drive



Howard County: Montgomery Road at Steepridge Drive



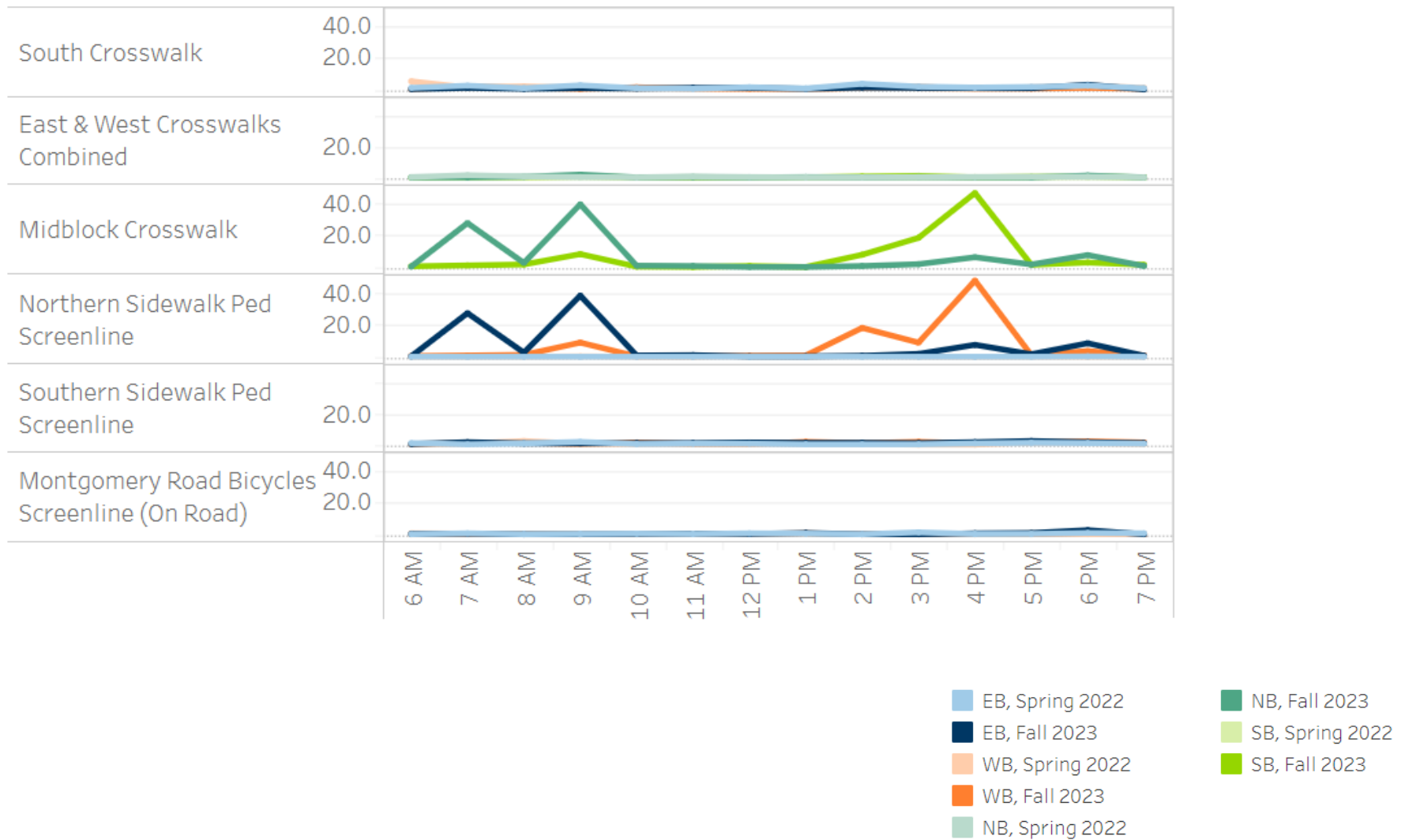
Weekday and Weekend Averages



More project data on tableau here:

<https://public.tableau.com/app/profile/zach.kaufman/viz/MontgomeryRdatSteepridgeDrCounts/MontgomeryRoadatSteepridgeDriveBikePedCounts>

Time of Day Average: Weekdays



More project data on tableau here:

<https://public.tableau.com/app/profile/zach.kaufman/viz/MontgomeryRdatSteepridgeDrCounts/MontgomeryRoadatSteepridgeDriveBikePedCounts>

Conclusions

- Project was successful in improving walk to school safety and participation
- Biggest increase was in weekday pedestrian activity, but weekend pedestrian activity also increased
- Count data helps justify the cost of this project and similar future projects