



## BPAG

**March 15, 2023**



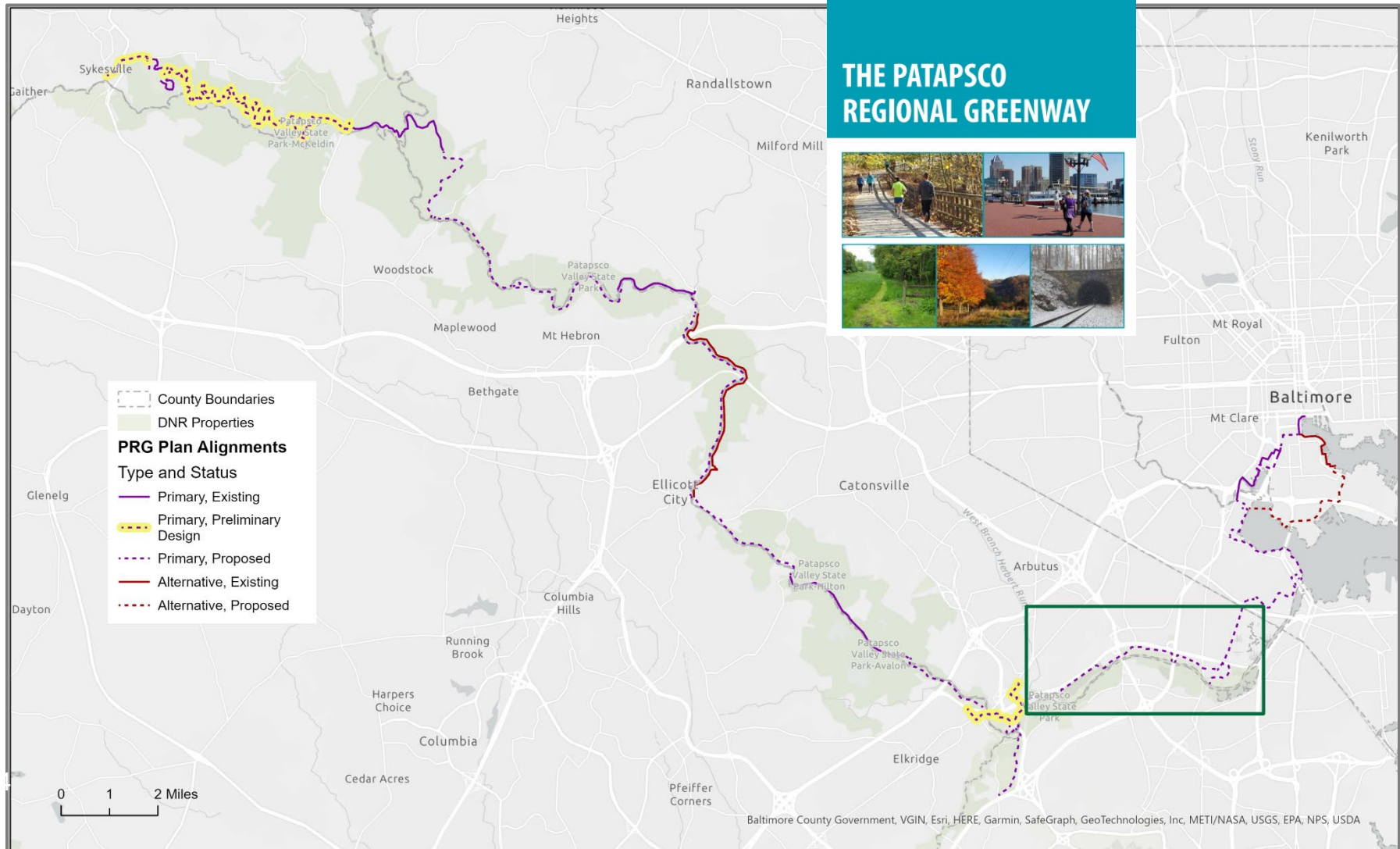
# PRG Plan

- The [Patapsco Regional Greenway Plan](#) was approved by the Baltimore Regional Transportation Board (BRTB) in 2017
- The Plan maps the main alignment of a 40-mile greenway
- Connecting Sykesville in Carroll County to the Baltimore Inner Harbor and traversing the Patapsco Valley in Anne Arundel, Baltimore, and Howard Counties
- Parts of the 10-12 foot wide shared-use trail are already constructed and open for use
- Remaining segments will be designed and constructed based on jurisdictional priorities and funding availability

# PRG Plan



# PRG Plan





# Facility Types

The PRG will use a variety of facility types to accommodate safe and comfortable use by pedestrians and bicyclists. The facilities being explored include:

- Asphalt/Concrete Pathway
- Crushed Compacted Stone Pathway
- Shared-Use Path (10-12' wide bike/ped facility)
- Bicycle Boulevard





# Explored Facility Types



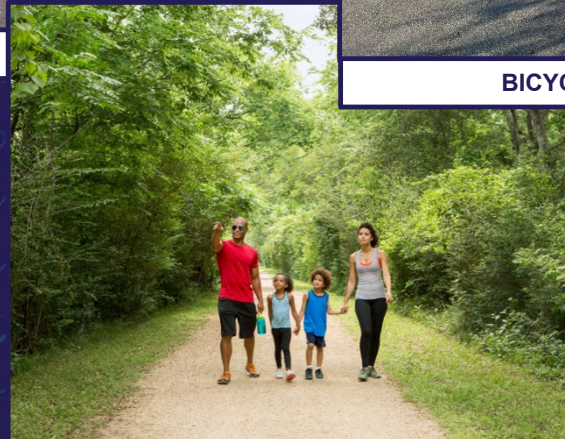
**ASPHALT PATHWAY**



**BICYCLE BOULEVARDS**

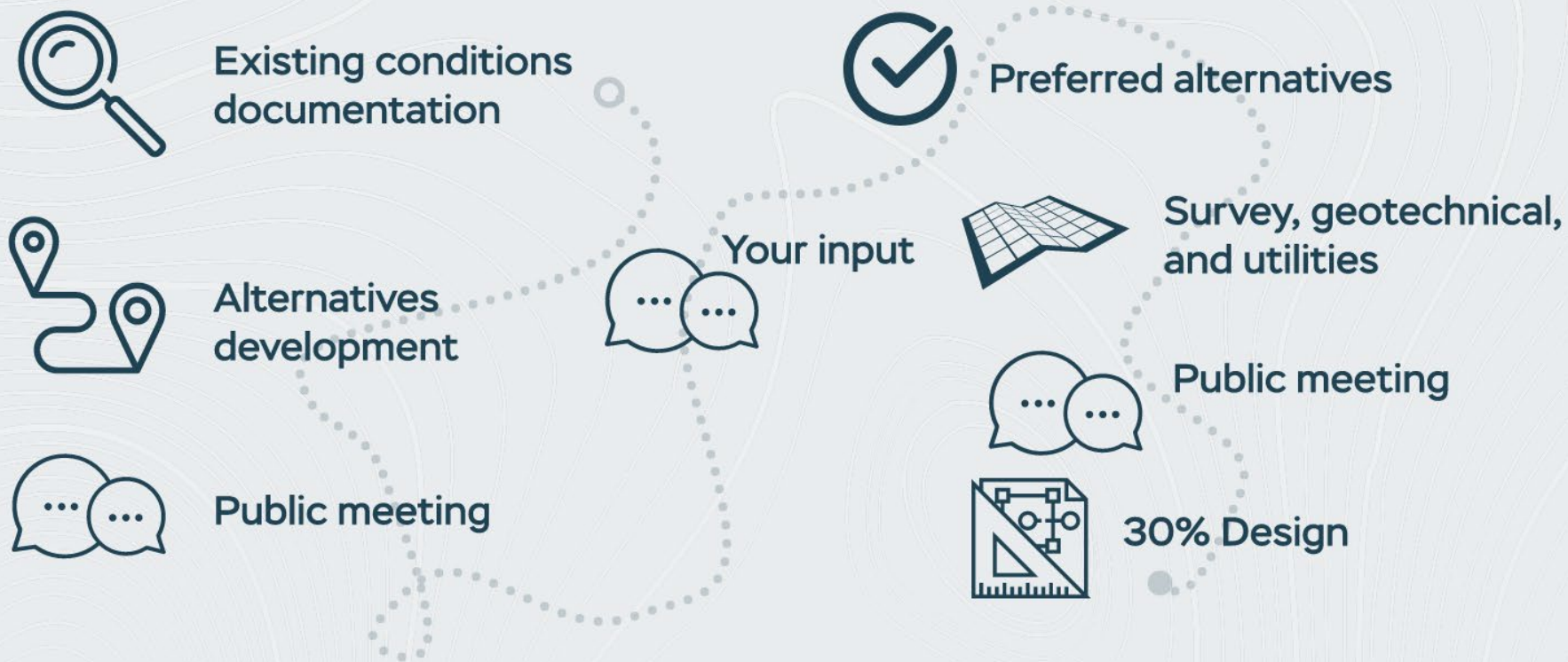


**SHARED-USE PATH**



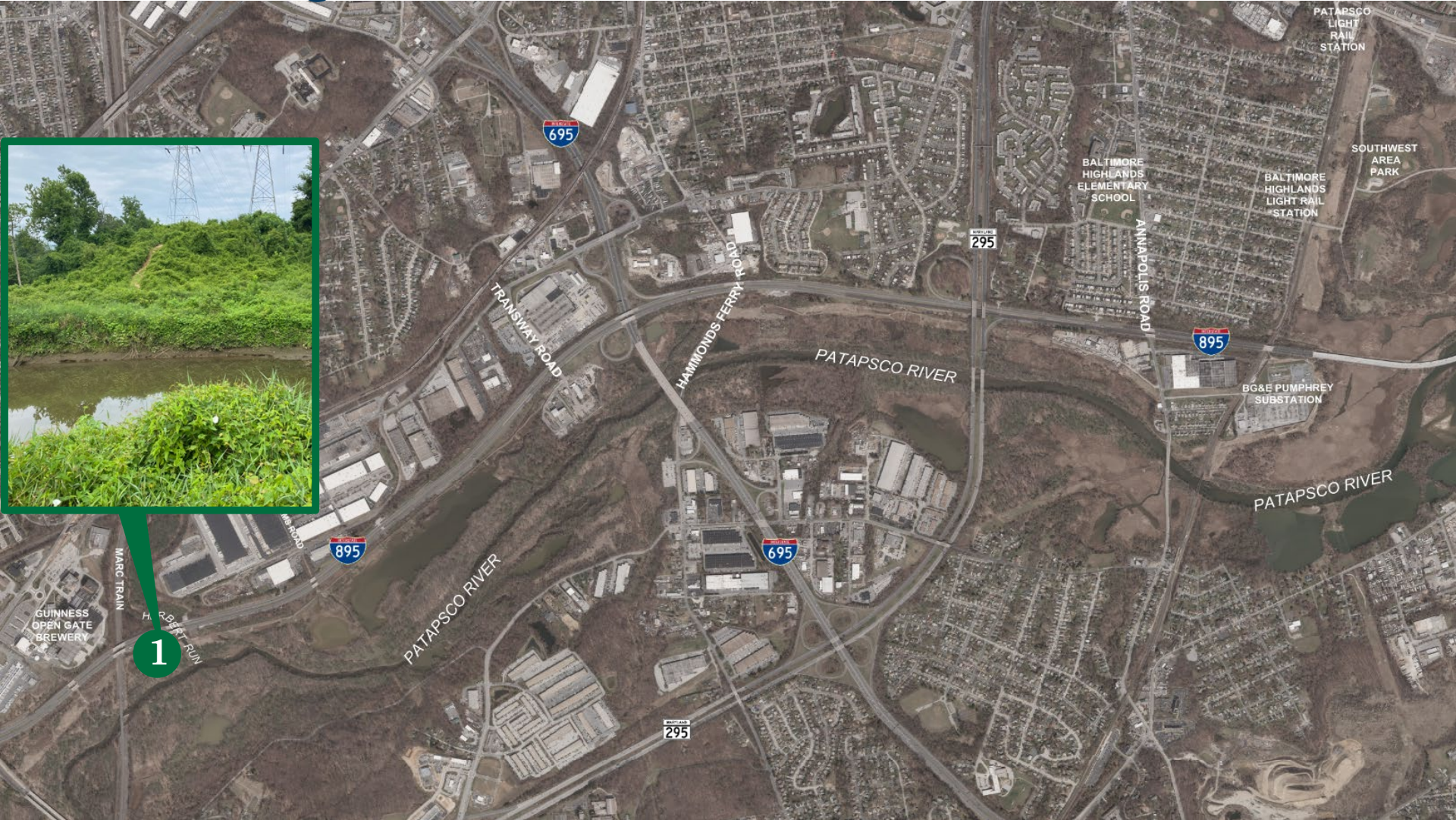
**CRUSHED COMPACTED STONE PATHWAY**

# Designing the Greenway Segment



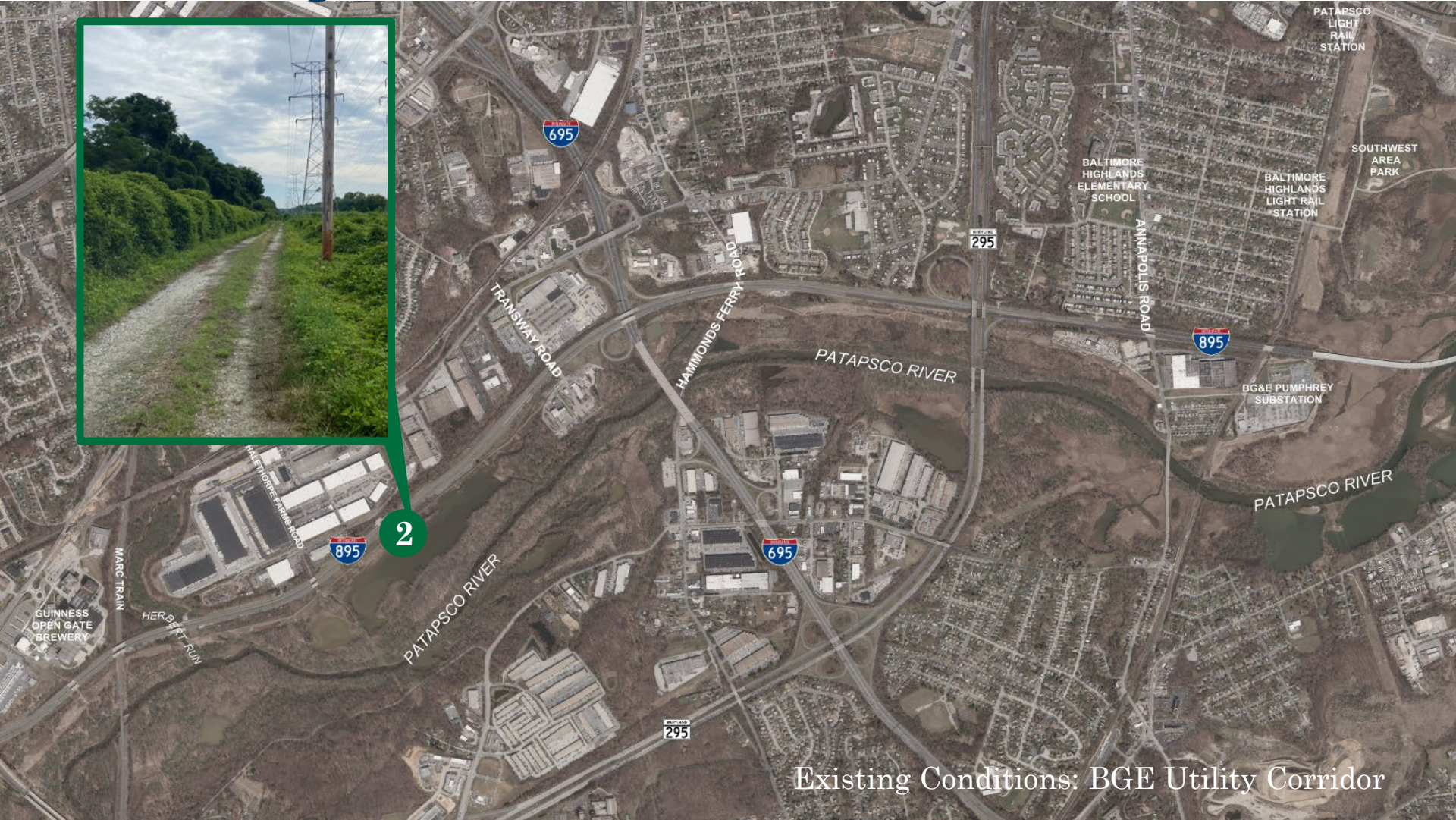


# Existing Conditions: BGE Corridor





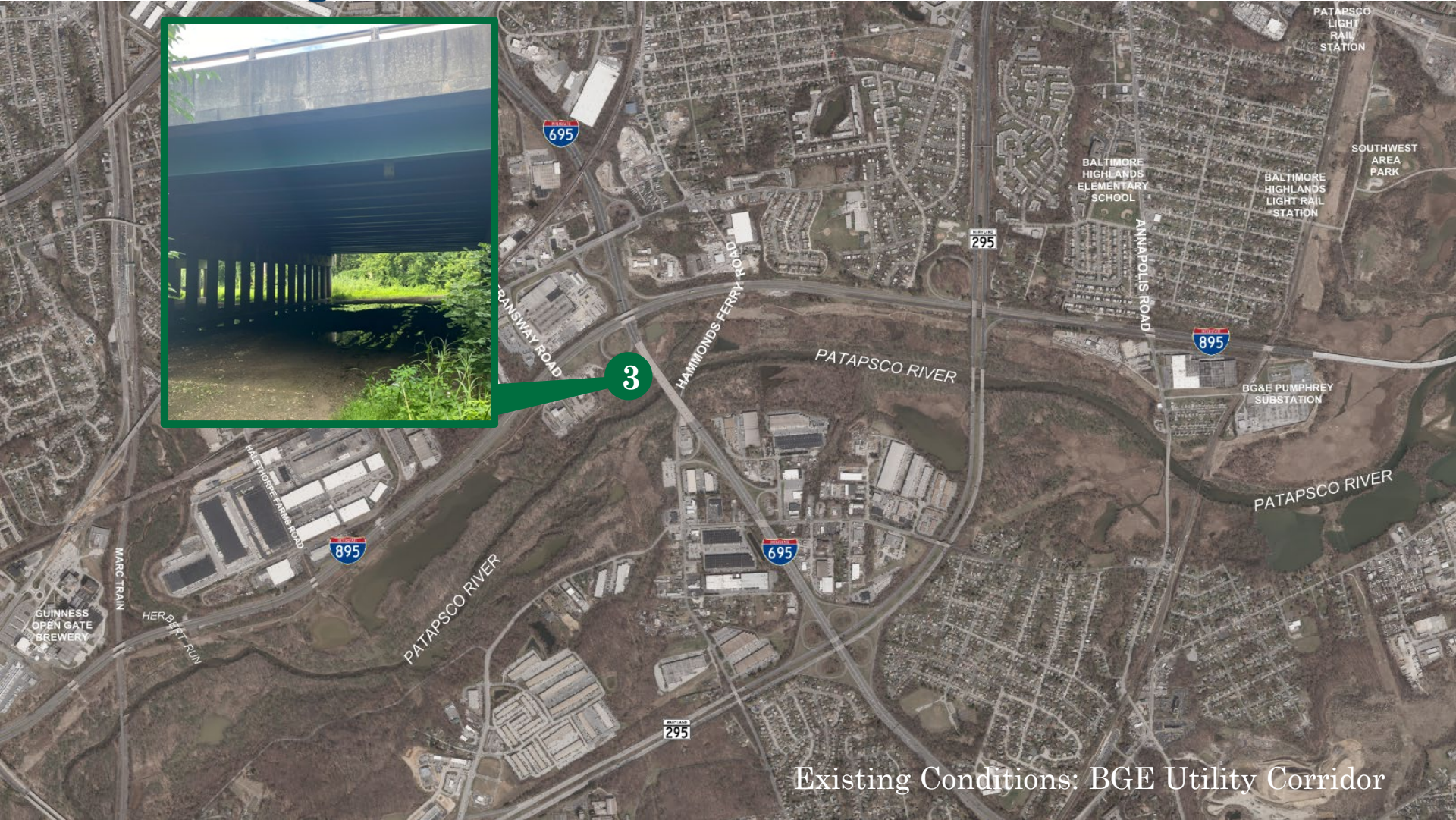
# Existing Conditions



Existing Conditions: BGE Utility Corridor



# Existing Conditions



Existing Conditions: BGE Utility Corridor



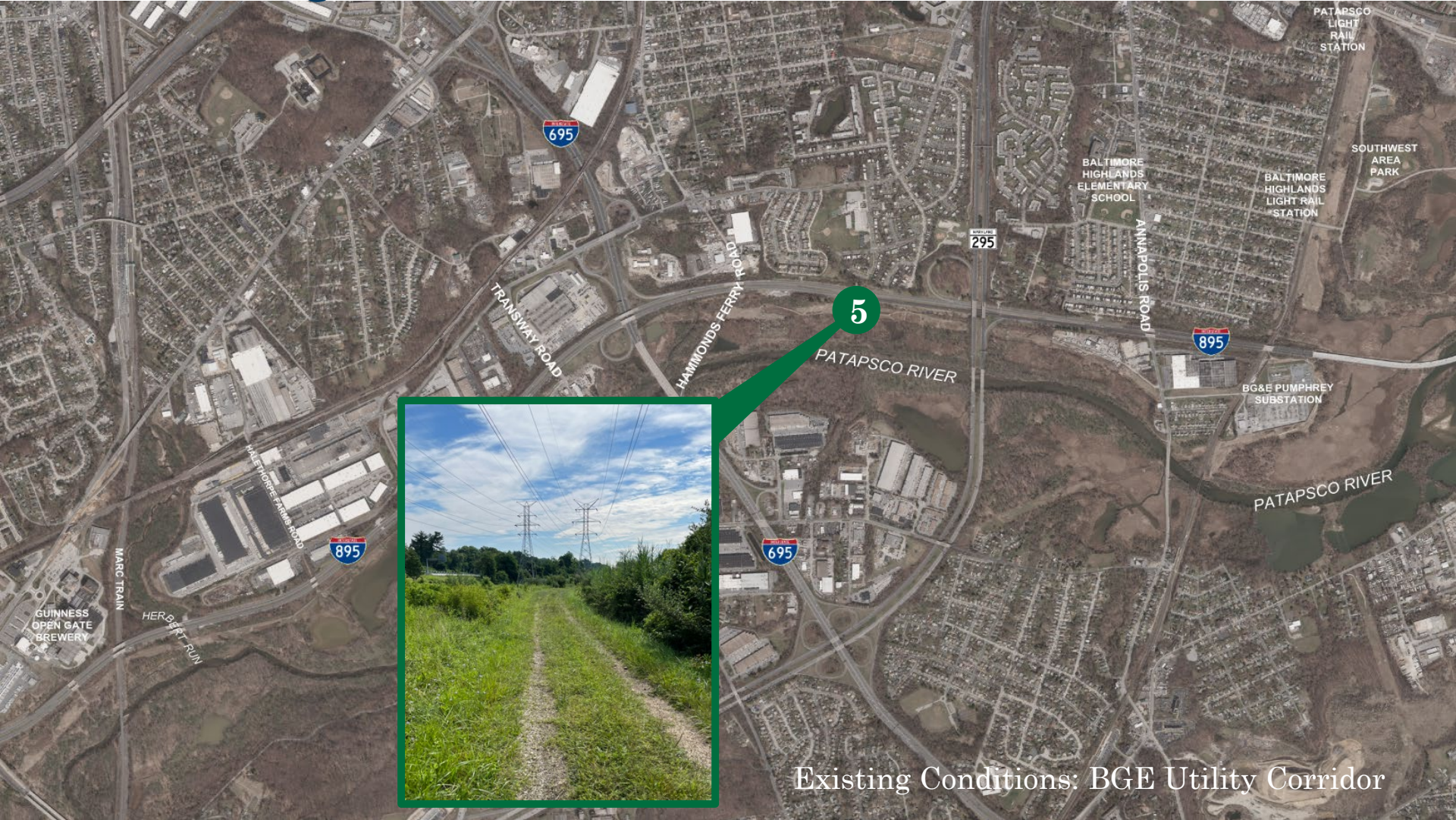
# Existing Conditions



Existing Conditions: BGE Utility Corridor



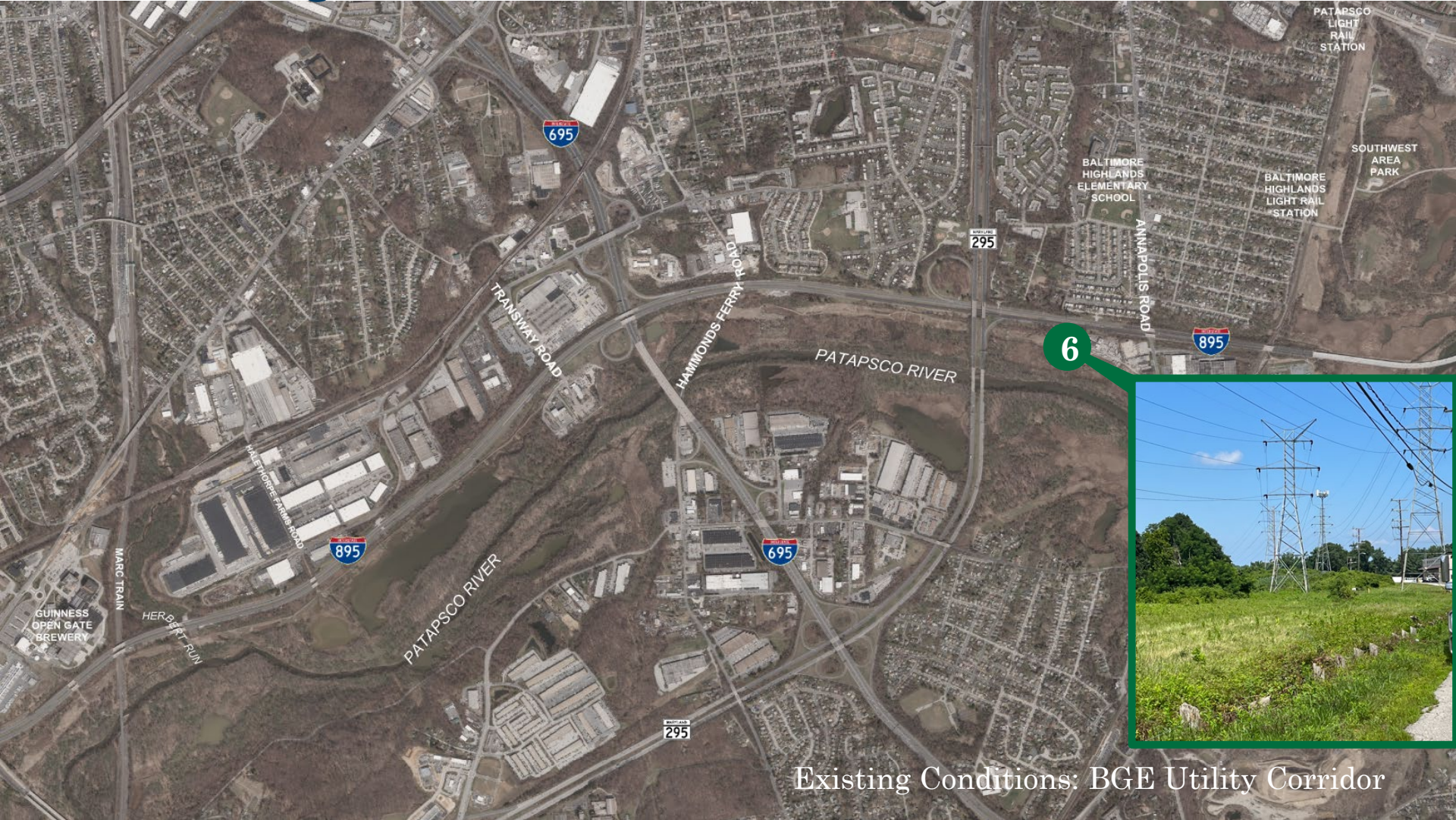
# Existing Conditions



Existing Conditions: BGE Utility Corridor



# Existing Conditions





# Existing Conditions

BGE Utility Corridor Existing Condition



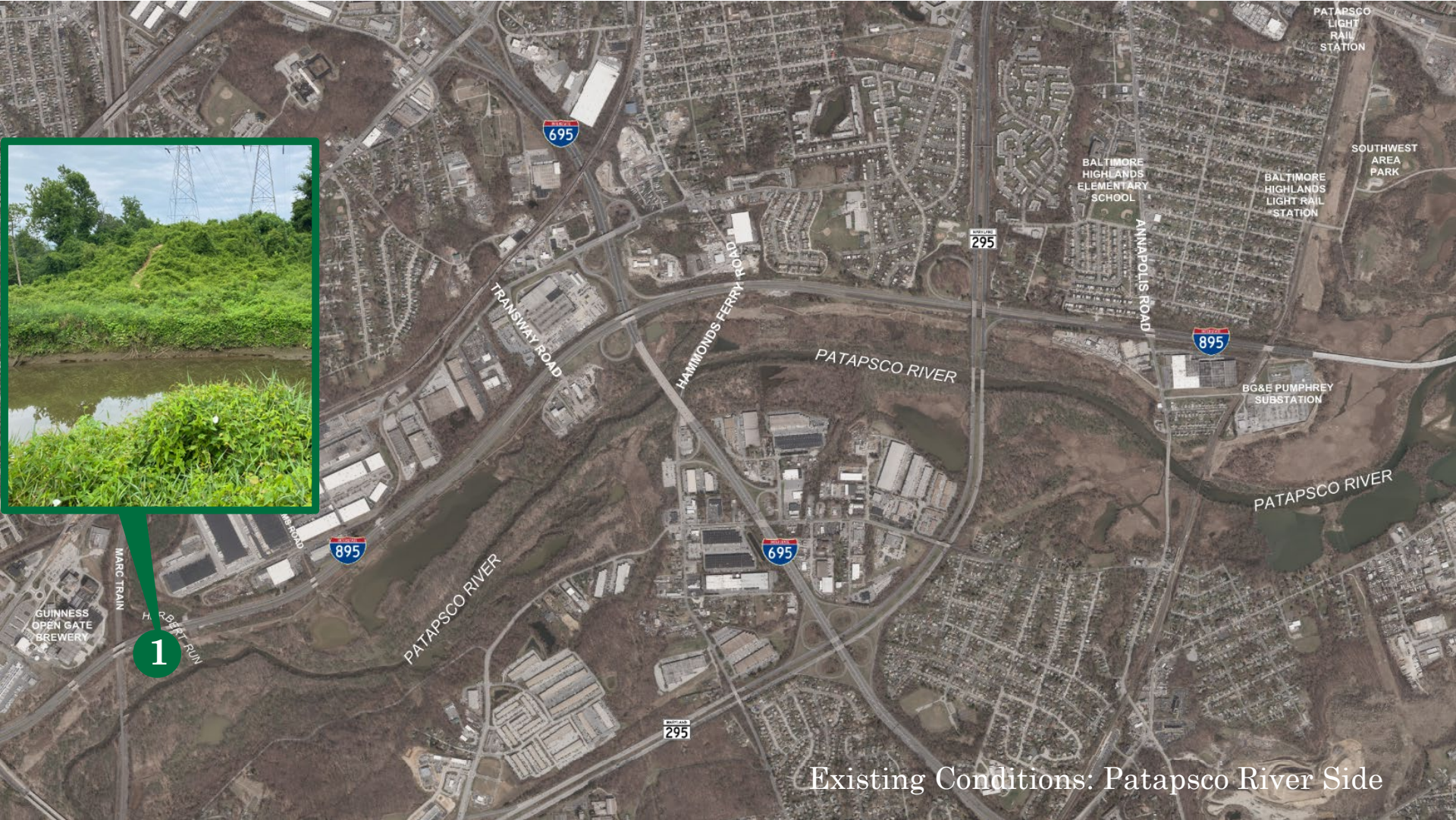


# Existing Conditions





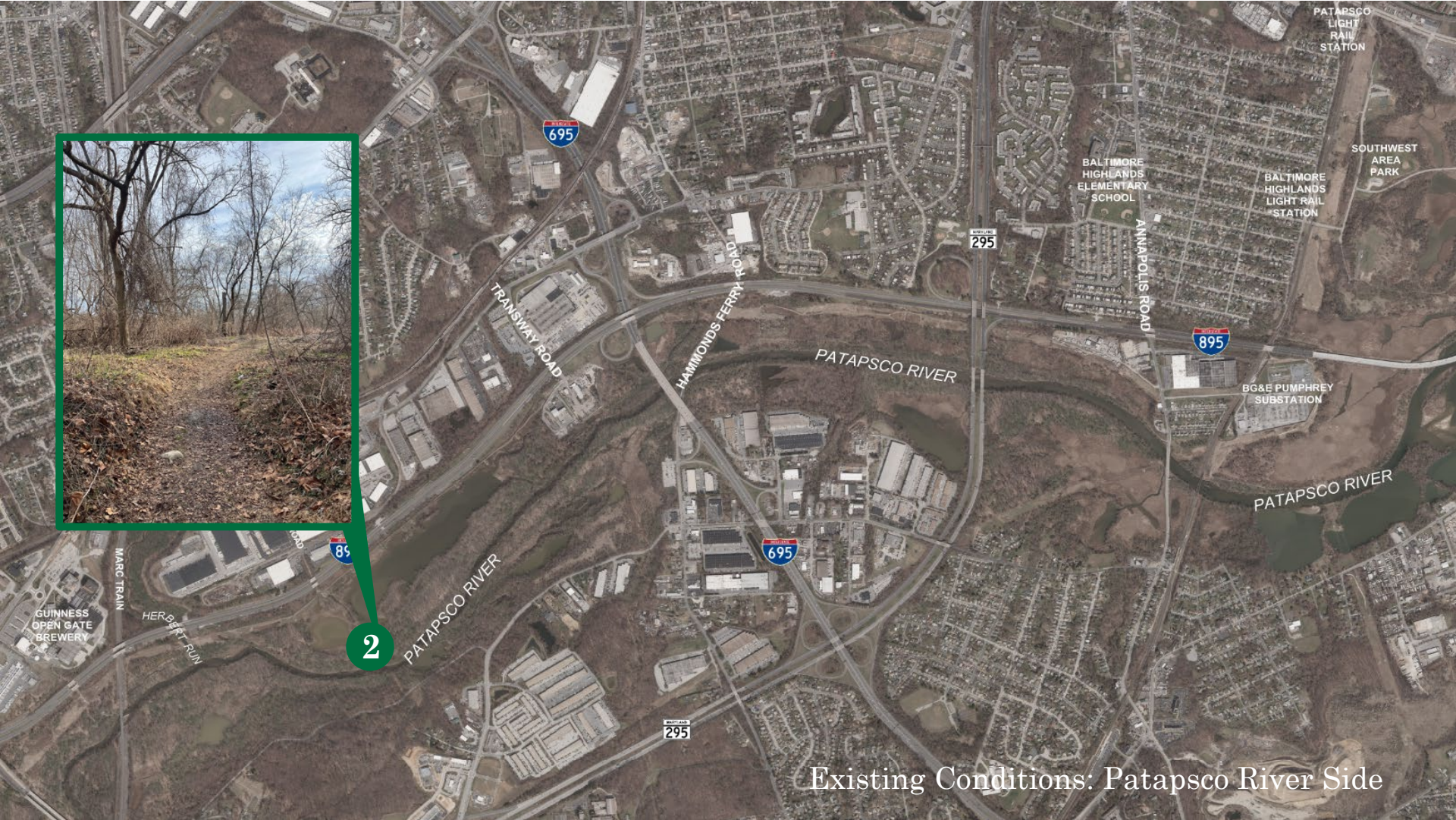
# Existing Conditions



Existing Conditions: Patapsco River Side



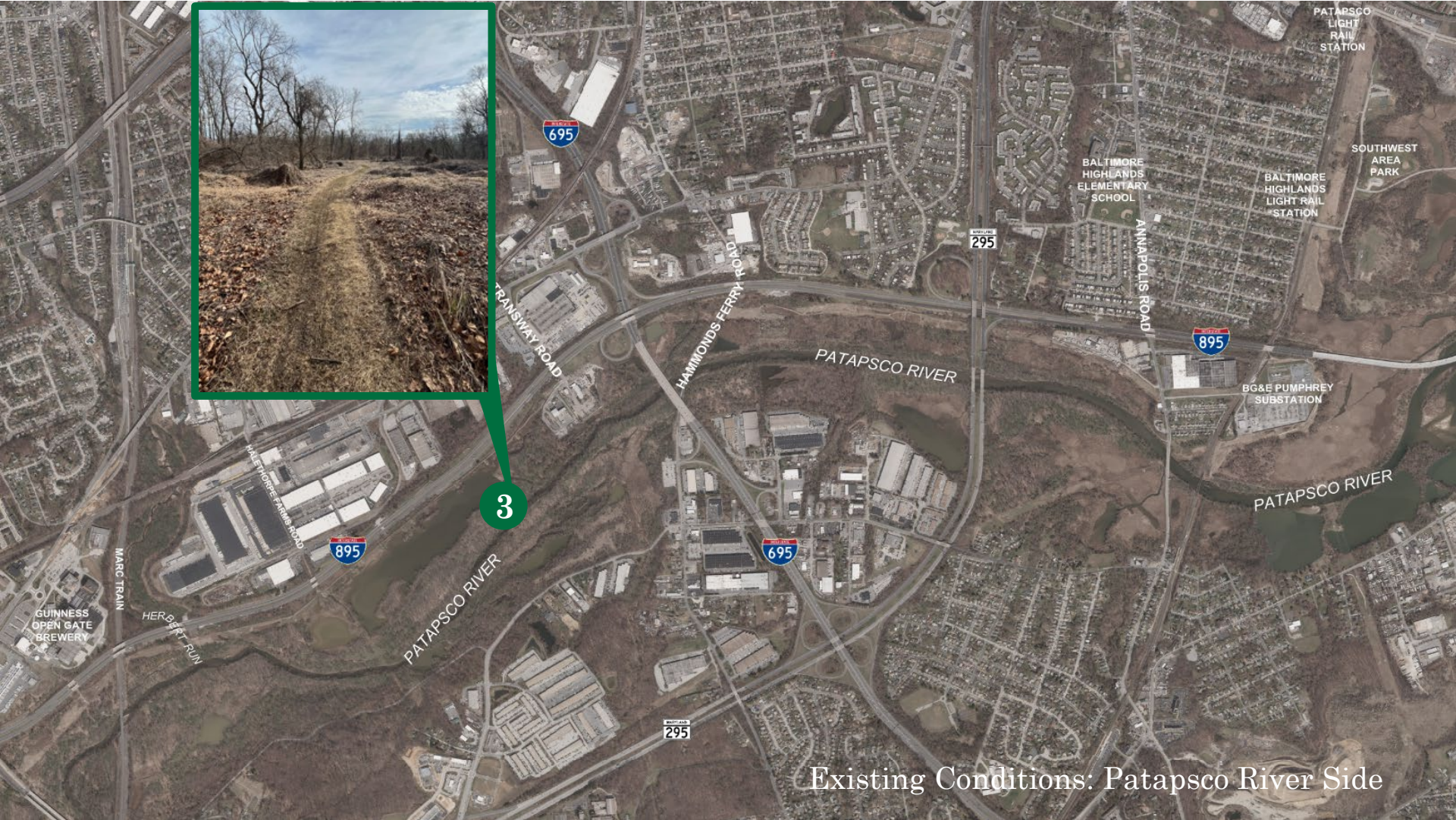
# Existing Conditions



Existing Conditions: Patapsco River Side



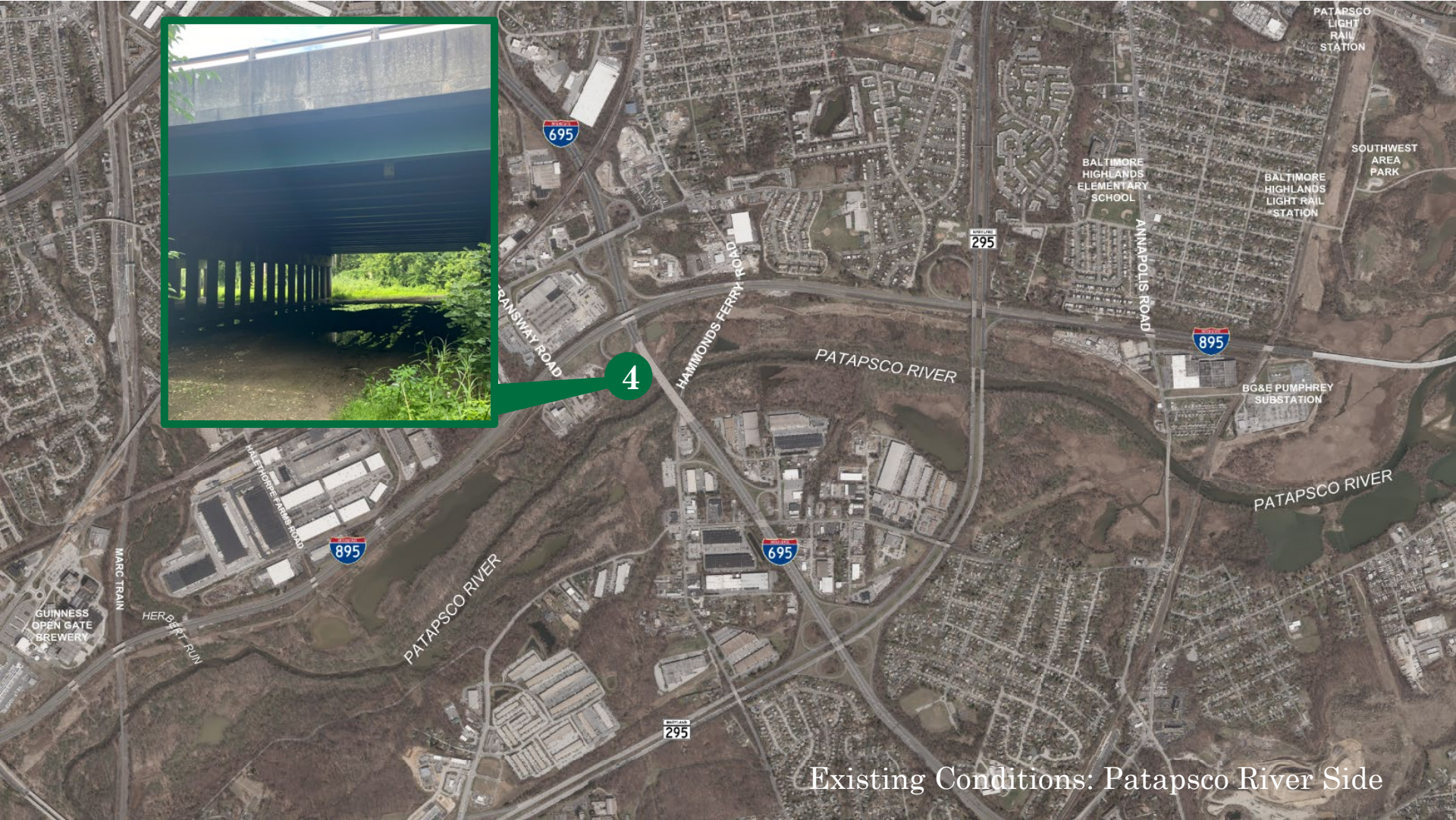
# Existing Conditions



Existing Conditions: Patapsco River Side



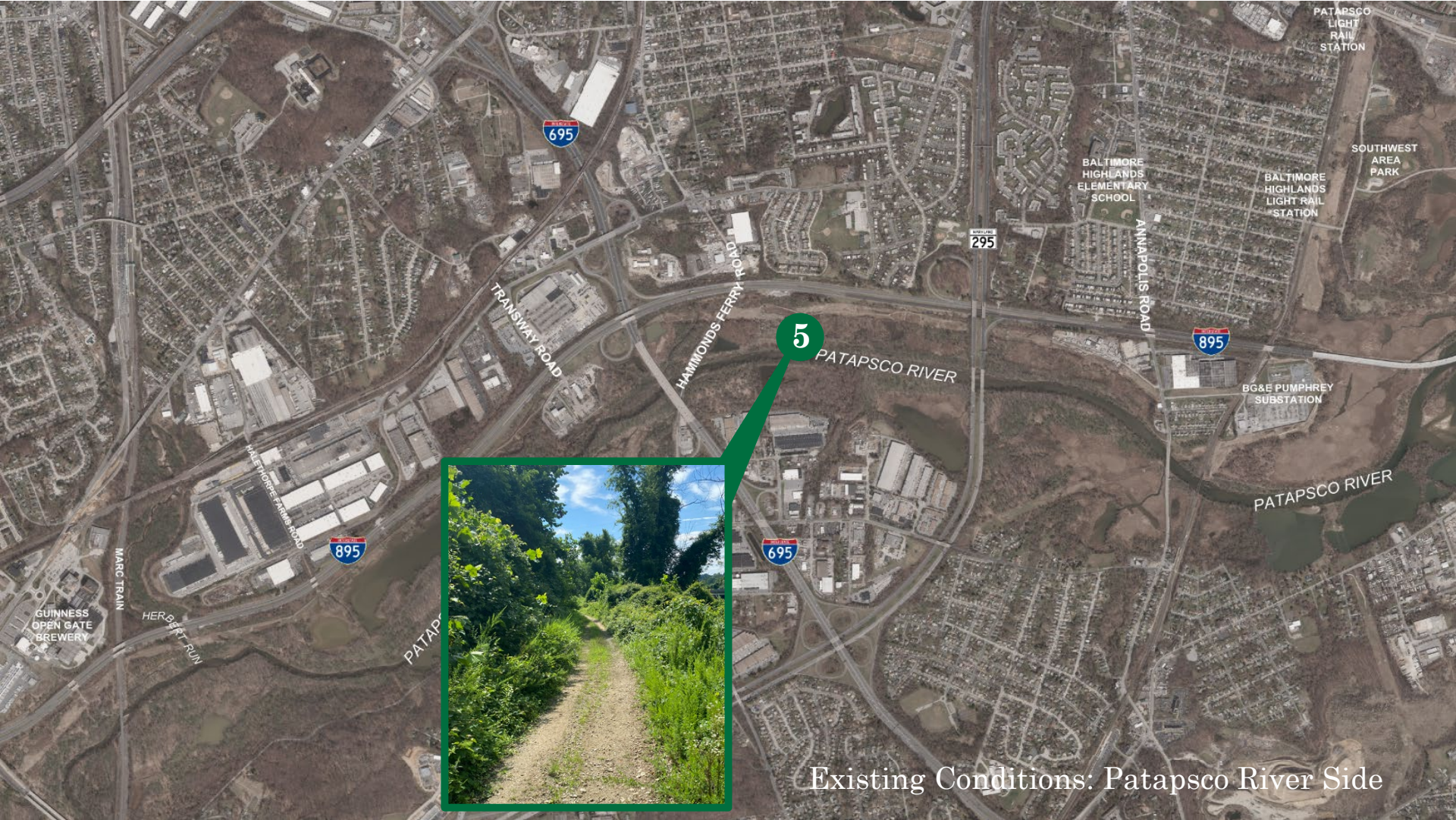
# Existing Conditions



Existing Conditions: Patapsco River Side



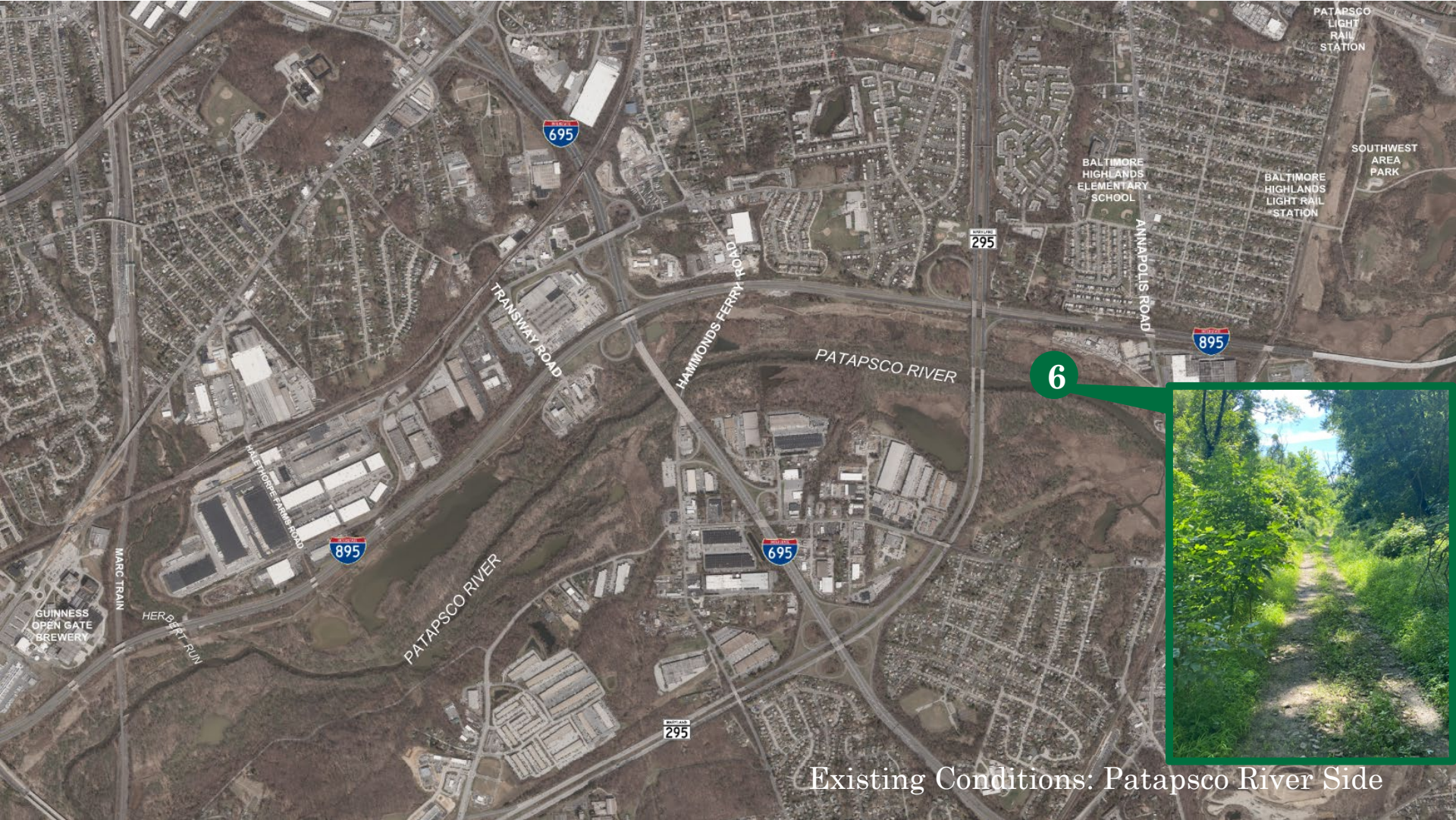
# Existing Conditions



Existing Conditions: Patapsco River Side



# Existing Conditions



Existing Conditions: Patapsco River Side



# Existing Conditions





# Existing Conditions





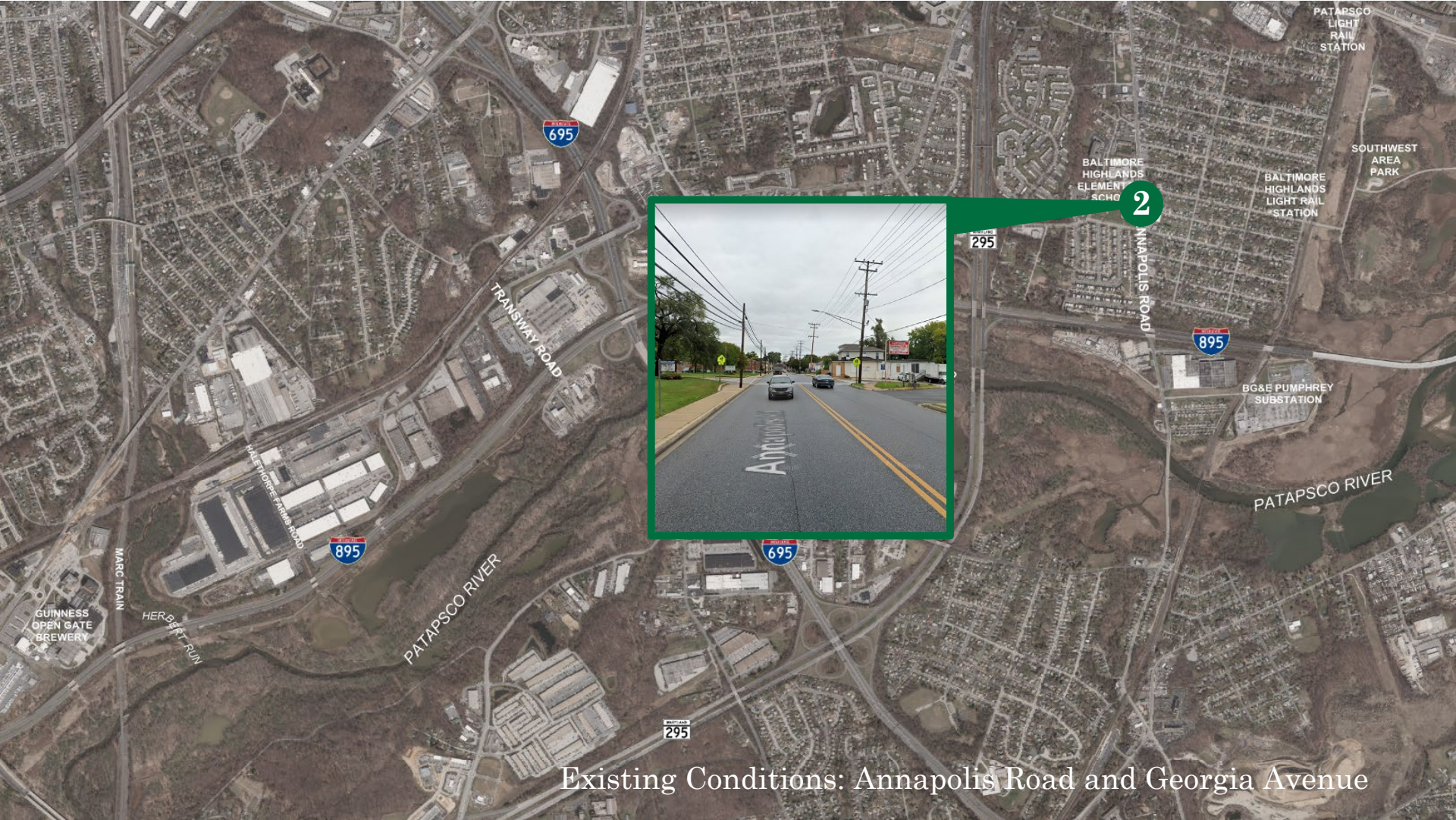
# Existing Conditions



Existing Conditions: Annapolis Road and Georgia Avenue



# Existing Conditions



Existing Conditions: Annapolis Road and Georgia Avenue



# Existing Conditions



Existing Conditions: Annapolis Road and Georgia Avenue



# Existing Conditions



Existing Conditions: Annapolis Road and Georgia Avenue



# Existing Conditions

Annapolis Road Existing Condition



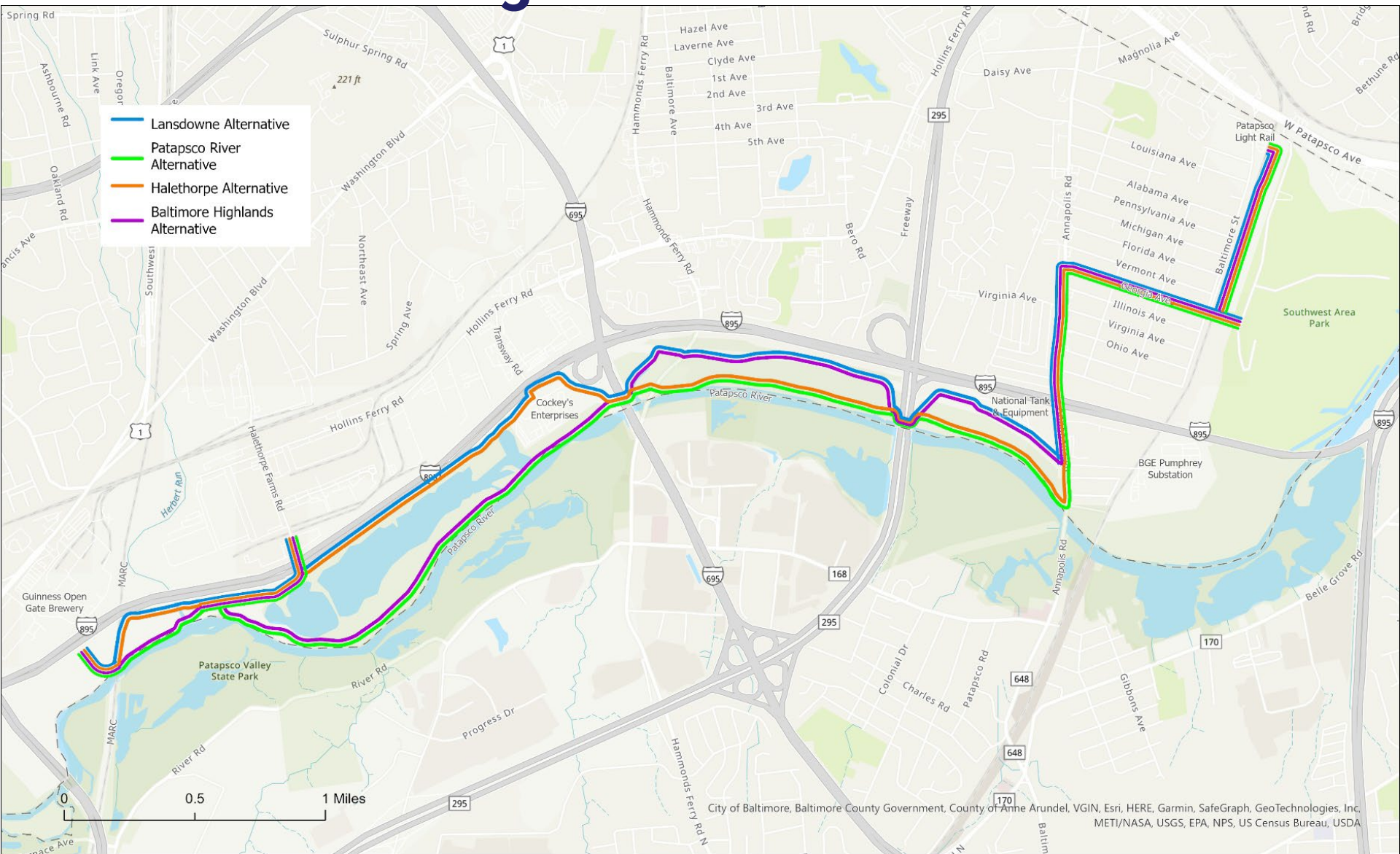


## Annapolis Road Trail Rendering



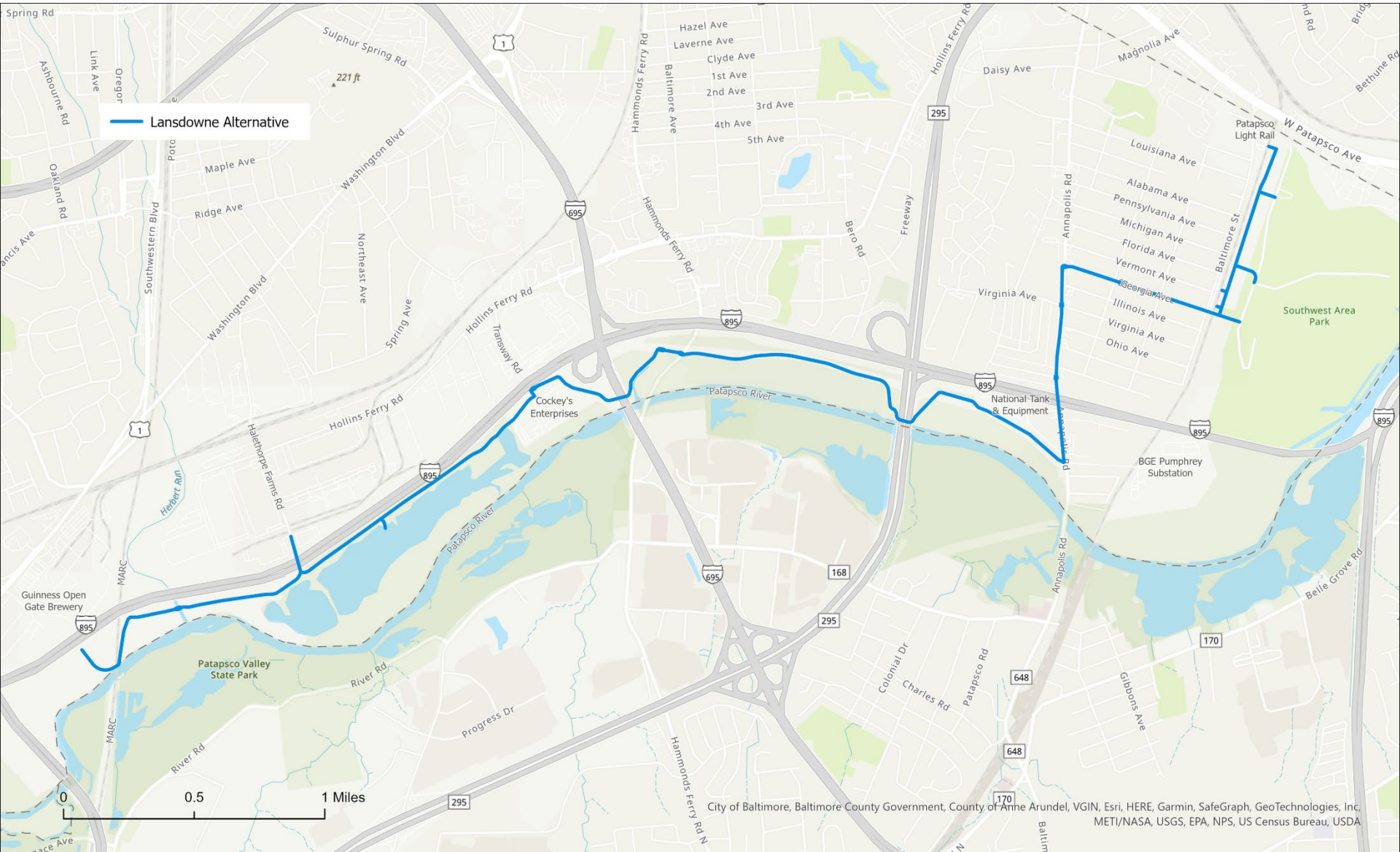


## Alternative Alignments



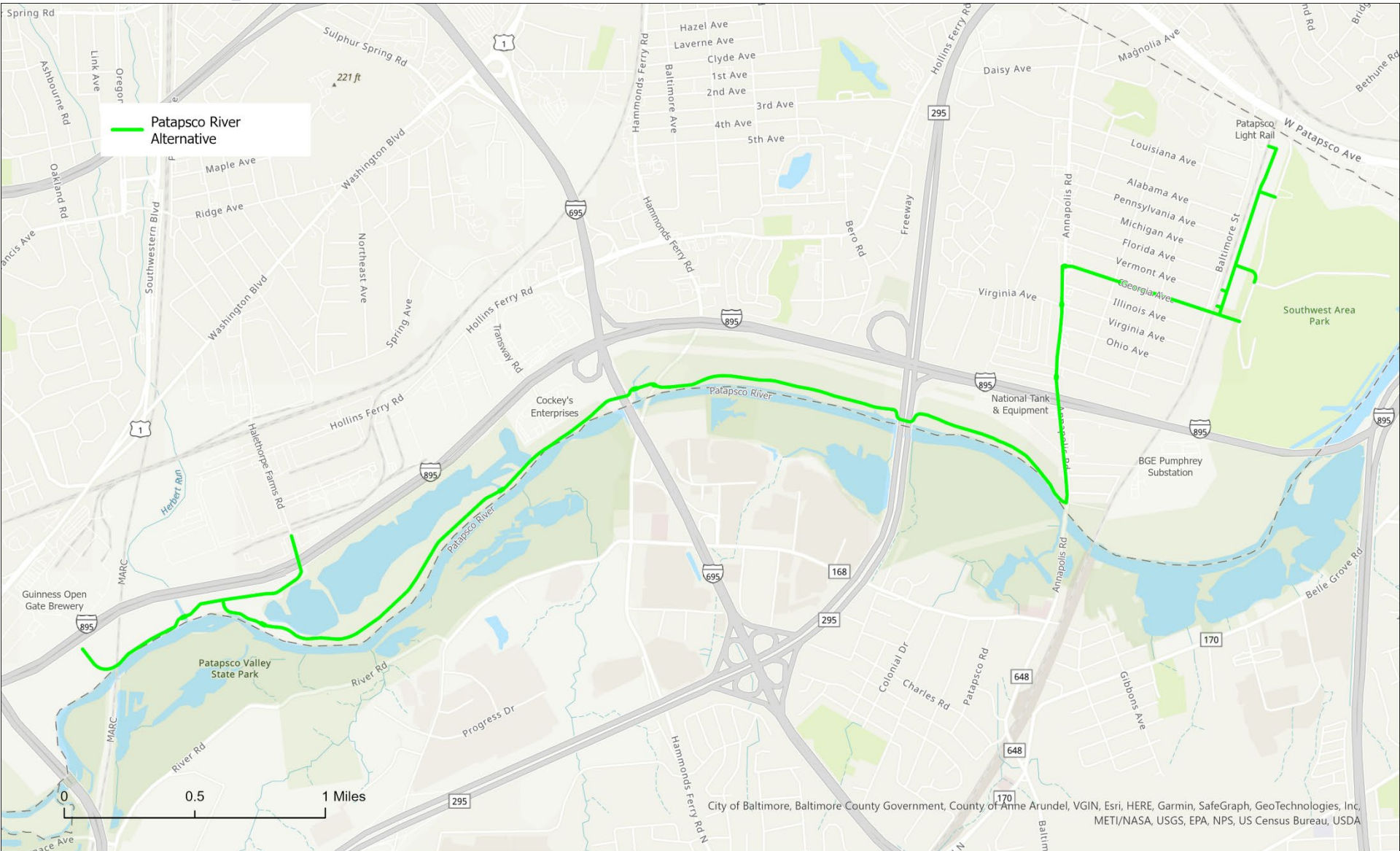


# Lansdowne Alternative



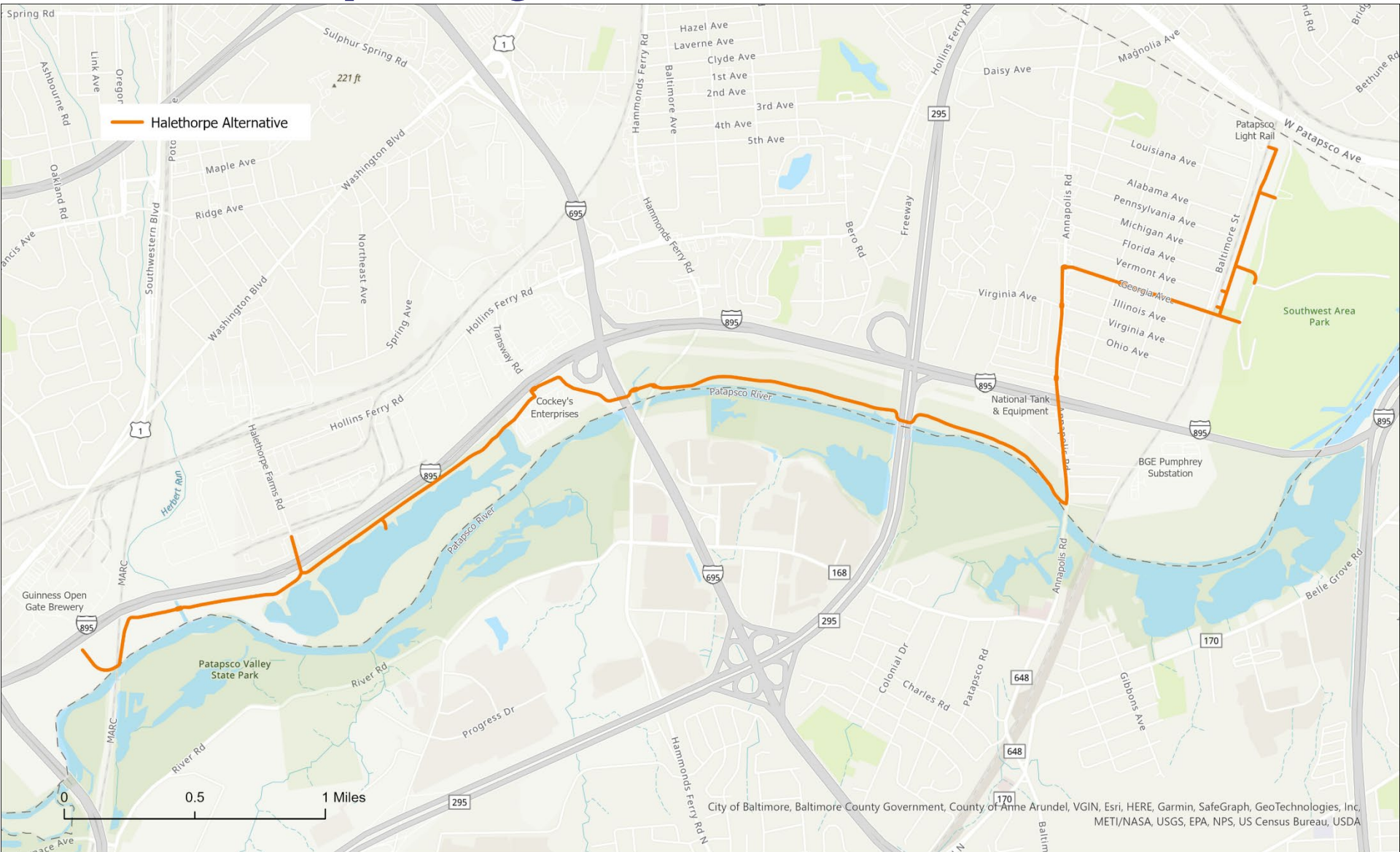


# Patapsco River Alternative



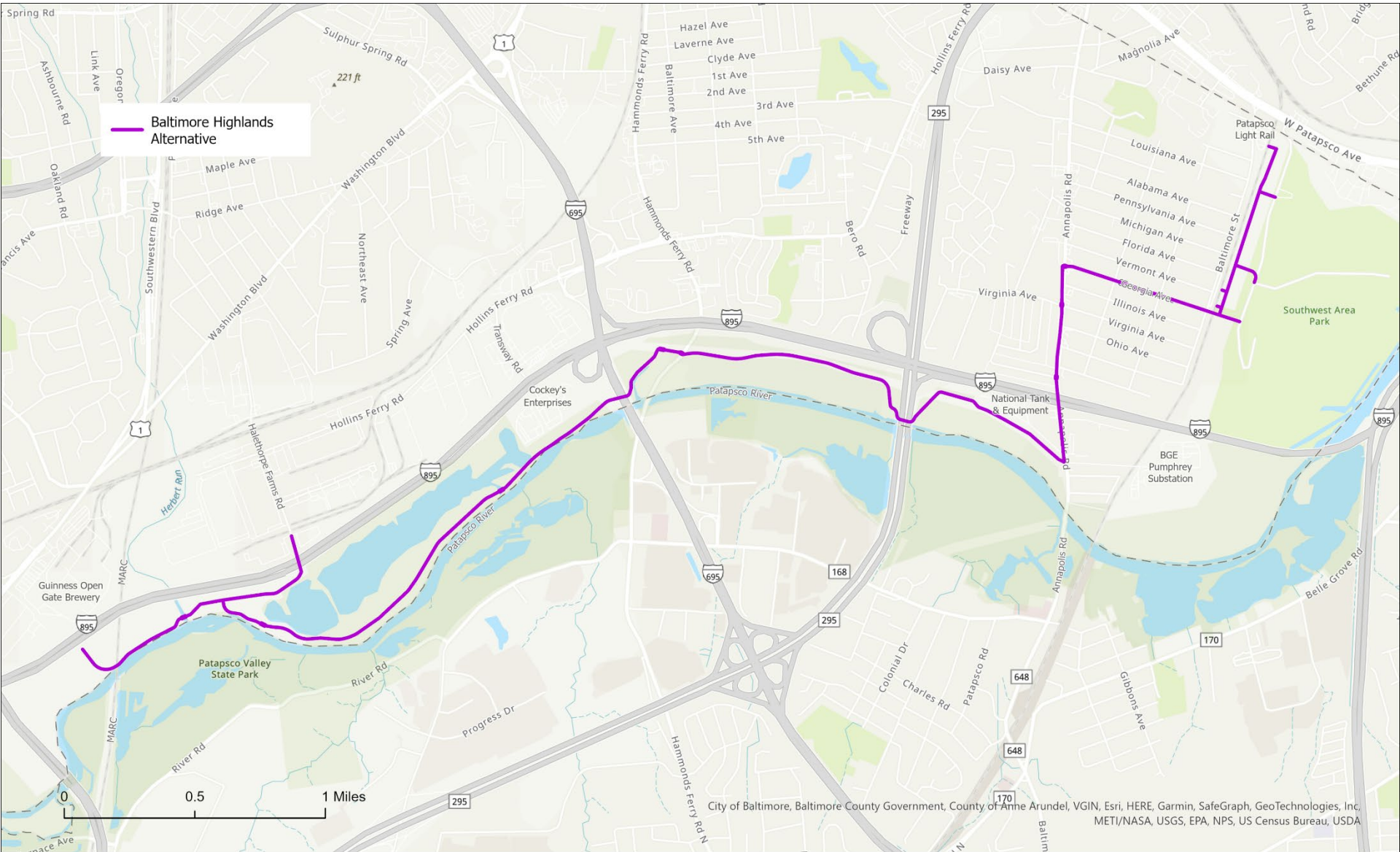


# Halethorpe Alignment





# Baltimore Highlands Alignment





# Guinness to Southwest Area Park Segment

Project website

[publicinput.com/prg](https://publicinput.com/prg)

## PATAPSCO REGIONAL GREENWAY

GUINNESS TO SOUTHWEST  
AREA PARK SEGMENT



Project Overview

Lansdowne Alternative

Patapsco River Alternative

Halethorpe Alter

### About the PRG: Guinness to Southwest Area Park Project

The Guinness to Southwest Area Park segment of the PRG extends approximately 6 miles from Guinness Open Gate Brewery to Southwest Area Park and the MDOT MTA Patapsco Light Rail Station in Baltimore County. The segment will use a variety of facility types to accommodate safe and comfortable use by pedestrians and bicyclists. The facilities being explored include asphalt/concrete pathways, crushed compacted stone pathways and a bicycle boulevard.

The purpose of this phase of the project is to explore the opportunities and challenges of the four proposed alignments, identify design details, engage the public, receive community feedback and prepare a 30% design document that will carry the project to final design and construction.

Through extensive field investigation, environmental consideration and diligent project team coordination, four trail alternatives have been identified for the Guinness to Southwest Area Park segment. These are the Lansdowne, Patapsco River, Halethorpe, and Baltimore Highlands Alternatives.

Click continue below or on the tabs above to learn more.

Also, [explore the project StoryMap](#) for more about the project, to experience a virtual guided tour of the four proposed alignments and to provide feedback through the project survey.



COMPLETE

#### Fall/Winter 2022 – Project Launch

Analyze existing conditions, develop alternative alignments.

LIVE

#### Winter 2023 – Soliciting Public Input

BMC and Baltimore County will solicit comments March 1 through March 30 and with a public meeting March 14.



# Guinness to Southwest Area Park Segment

Project website

[publicinput.com/prg](https://publicinput.com/prg)

Halethorpe Alternative

Baltimore Highlands Alternative

Share Your Thoughts

FAQ

We want to know what you think! The public is invited to share their feedback on the four alternative trail alignments, for the Patapsco Regional Greenway: Guinness to Southwest Area Park segment.

Comments are welcome from **Wednesday, March 1 – Thursday, March 30, 2023.**

To share your thoughts, please use one of the following methods:

**PUBLIC MEETING:** March 14 from 6 to 7:30 p.m. at the Halethorpe Community Center (1900 Northeast Ave, Baltimore, MD 21227).

**EMAIL:** [prgwareapark@PublicInput.com](mailto:prgwareapark@PublicInput.com)

**TEXT:** Text the keyword 'prgwareapark' to the number 73224

**VOICEMAIL:** 855-925-2801 x3619

**SURVEY:** Share your comments below, [visit our StoryMap](#) or [take the survey](#)



COMPLETE

**Fall/Winter 2022 – Project Launch**

Analyze existing conditions, develop alternative alignments.

LIVE

**Winter 2023 – Soliciting Public Input**



# Guinness to Southwest Area Park Segment

- Survey

Please rate, in order of importance, what you value most for a shared-use path connection between Guinness Open Gate Brewery and Southwest Area Park/Patapsco Light Rail Station.

	Not important	Somewhat important	Important	Very important
Scenic route	<input type="radio"/>	<input type="radio"/>	<input type="radio"/>	<input type="radio"/>
Direct route	<input type="radio"/>	<input type="radio"/>	<input type="radio"/>	<input type="radio"/>
Flat terrain	<input type="radio"/>	<input type="radio"/>	<input type="radio"/>	<input type="radio"/>
Free from noise pollutions (traffic)	<input type="radio"/>	<input type="radio"/>	<input type="radio"/>	<input type="radio"/>



# Guinness to Southwest Area Park Segment

- Survey

Which shared-use path option do you prefer?

☐ Lansdowne Alternative

☐ Patapsco River Alternative

☐ Halethorpe Alternative

☐ Baltimore Highland Alternative

☐ No Preference

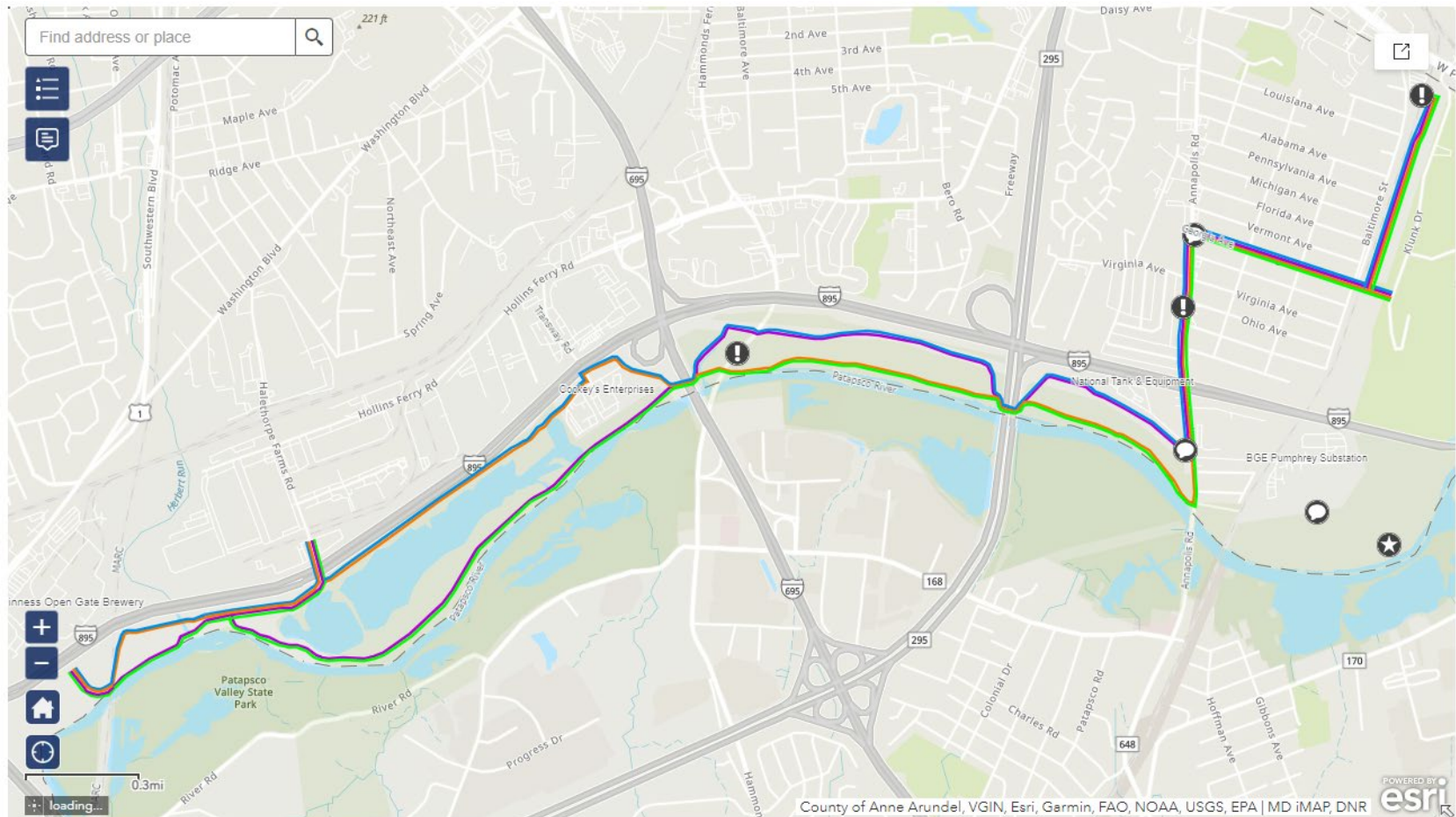
☐ No Build

☐ Other (please specify)



# Guinness to Southwest Area Park Segment

- [Comment map](#)





# Next Steps

March 1<sup>st</sup> –  
March 30<sup>th</sup>

- Public Comment Period

April

- Select Preferred Alternative

April to  
September

- Begin Design of Preferred Alternative

September  
to October

- Public Comment Period and  
Public Meeting #2



Page 10 of 10

410.732.0500 x1008 | cmingus@baltometro.org | www.baltometro.org

