

# Baltimore City Micromobility

BRTB BPAG

Meg Young, New Mobility Manager

July 20, 2022







## Shared Micro-Mobility Timeline

2016 Baltimore Bike Share Launches in October with 200 Bikes at 20 stations



2018 Baltimore Bike Share Permanently Shut down & Dockless Pilot Launched



2019 Dockless Codified & First Permits issued (& extended for COVID 19)– Bolt, Jump, Lime, Spin



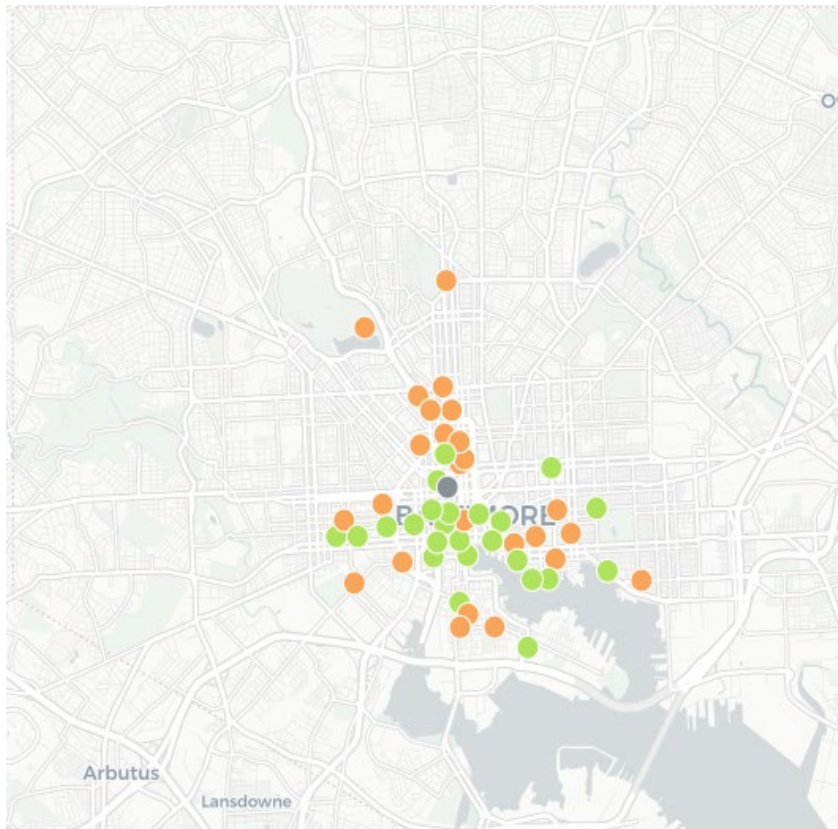
2021 Permits awarded to Lime, LINK, Spin



2022 First permit renewal to Spin, additional permits awarded to Bird and LINK by Superpedestrian

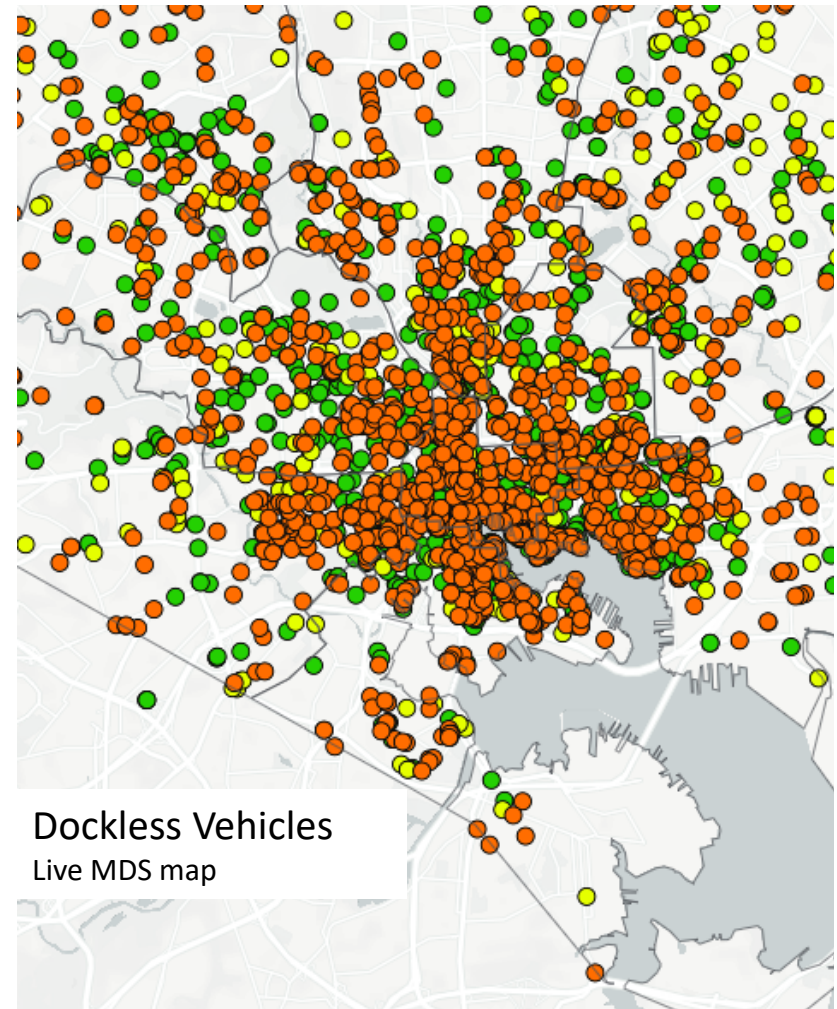


## Bikeshare v Dockless



Baltimore Bike Share Stations

- FIXED
- PLANNED
- TEMPORARY

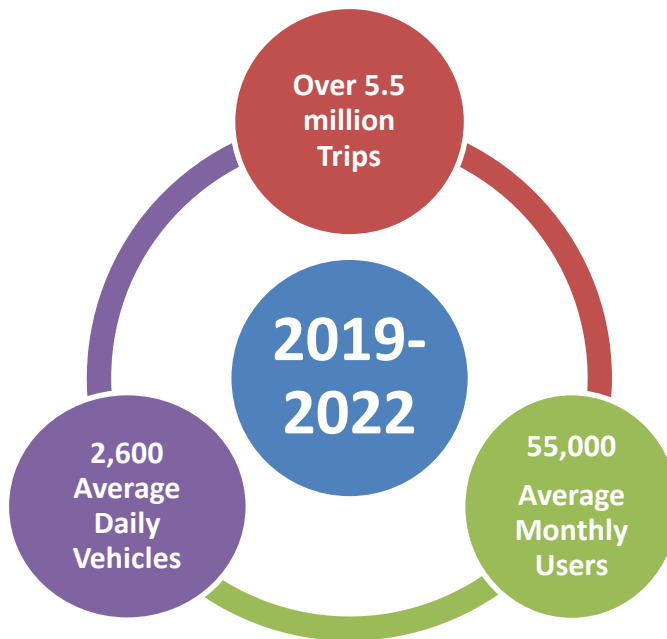


Dockless Vehicles  
Live MDS map

## Baltimore's Dockless Goals

- Improve equity of access by providing another option for people to get around Baltimore.
- Increase active transportation as a mode on Baltimore City streets.

## Baltimore's Complete Streets Modal Hierarchy





## Role of BCDOT

- Act in the best interest of the public
- Set the goals of the program
- Align laws and policies to achieve goals
- Establish funding mechanisms for support and sustainability
- Convene all stakeholders for ongoing evaluation





## Permit Rules & Regulations

Permit Rules & Regulations dictate:

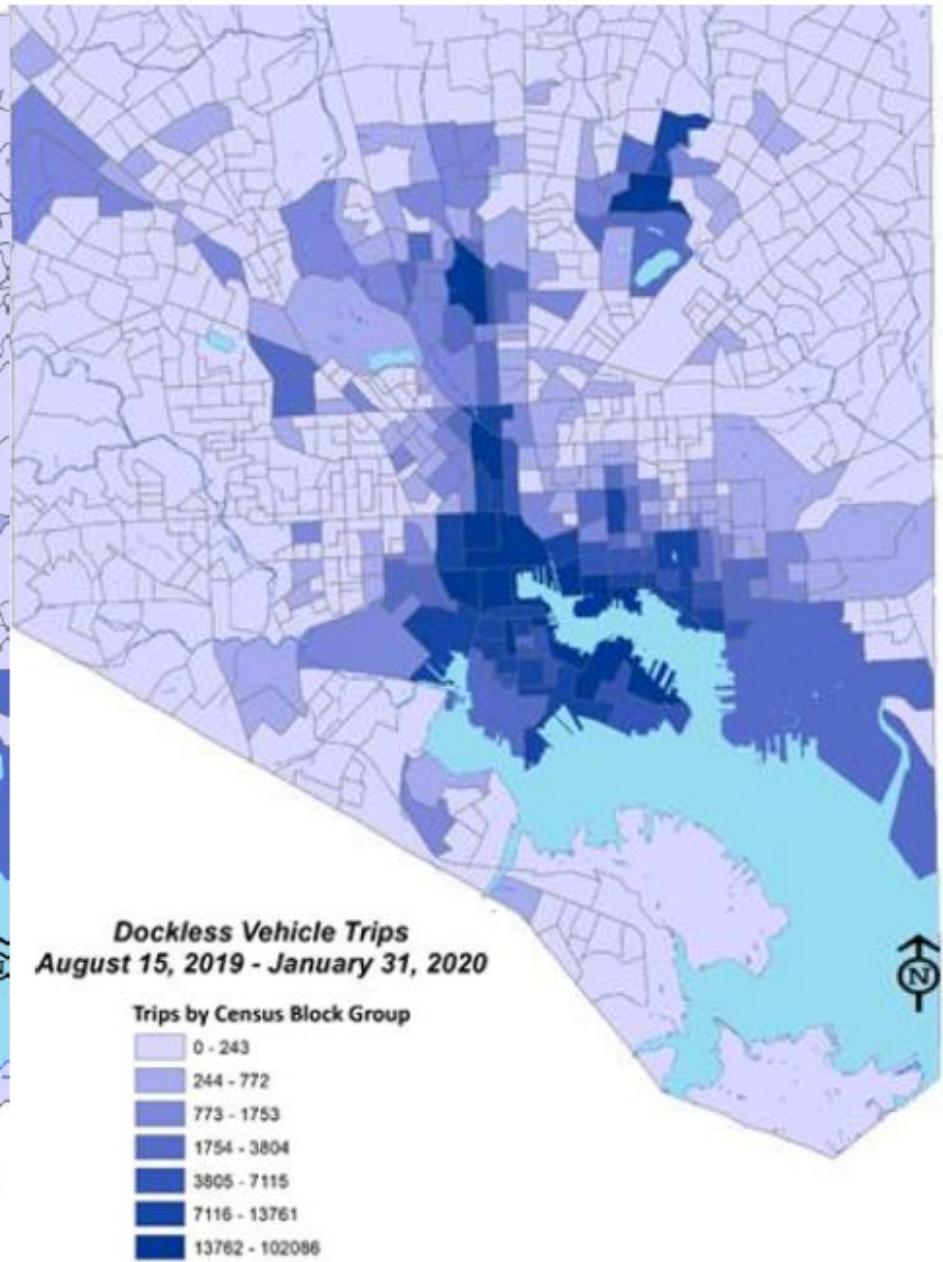
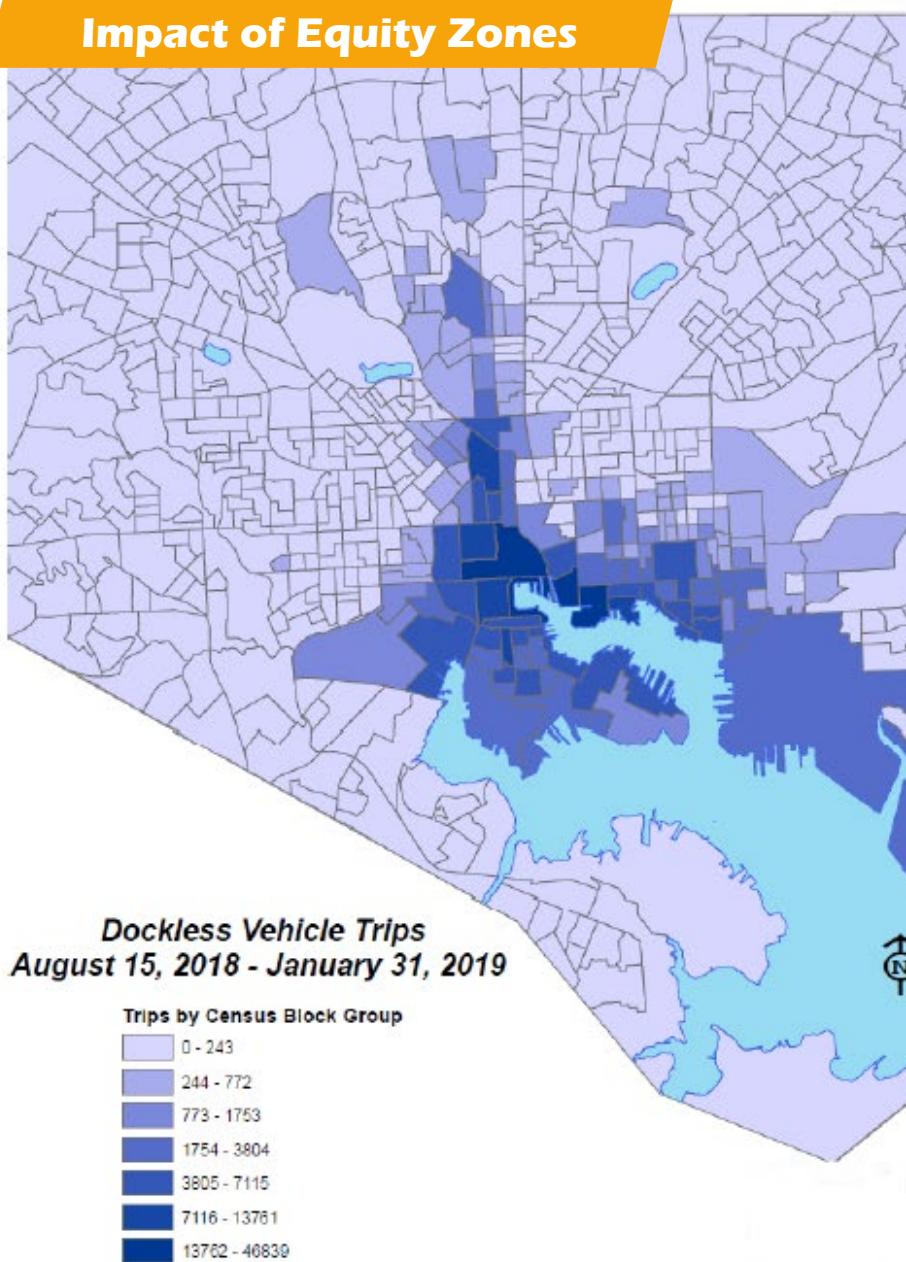
- Fleet Size – maximum and minimum vehicle numbers
- Parking & Distribution – morning deployment, avoiding over-concentration, parking checks
- Education & Engagement – required in app, on vehicles, and in person
- Equity of Access – required equity plans and access by non-users
- Safety & Vehicle Standards – vehicle specifications, no-ride and slow-ride zones, vehicle inspections
- Data Reporting & Privacy – trip data, monthly reports, and user protection
- Fees – fees for DOT to administer the program, towing, and performance bond amount



Photo by Dorret Oosterhoff



## Impact of Equity Zones





## DOT Program Support

DOT program support comes from Permit Fees charged to the for-hire companies and the \$.10 per ride tax. Program support includes:

- Staffing & Data Management - consultant, data storage, evaluation
- Infrastructure Improvements – Bike facility repairs, parking corrals
- Community Education & Engagement – PSA, cards for distribution, safety events

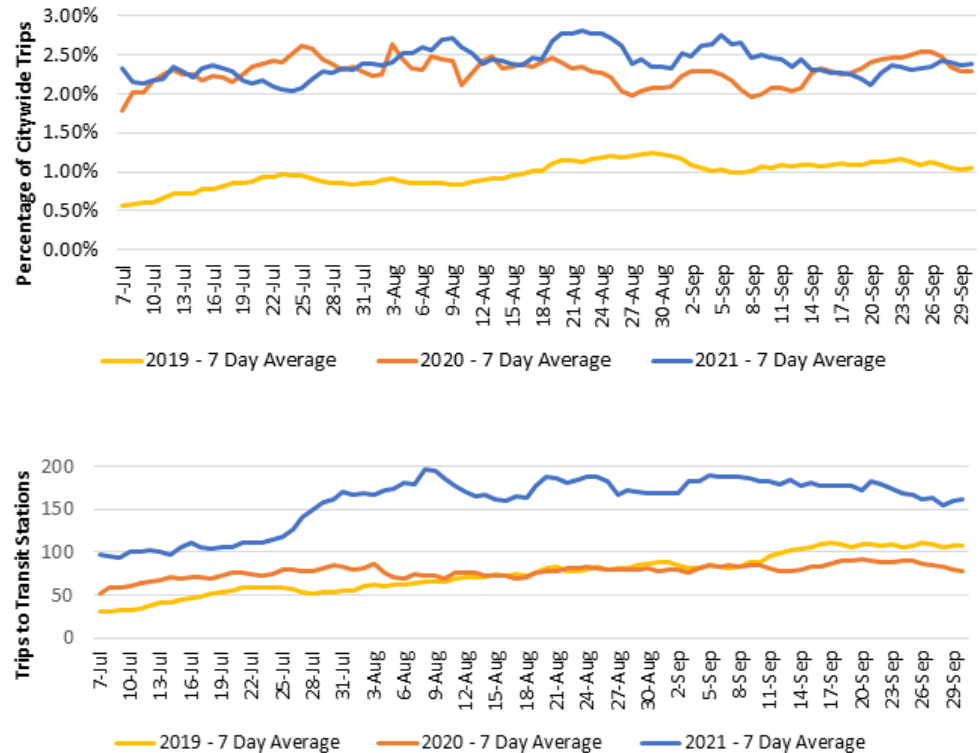
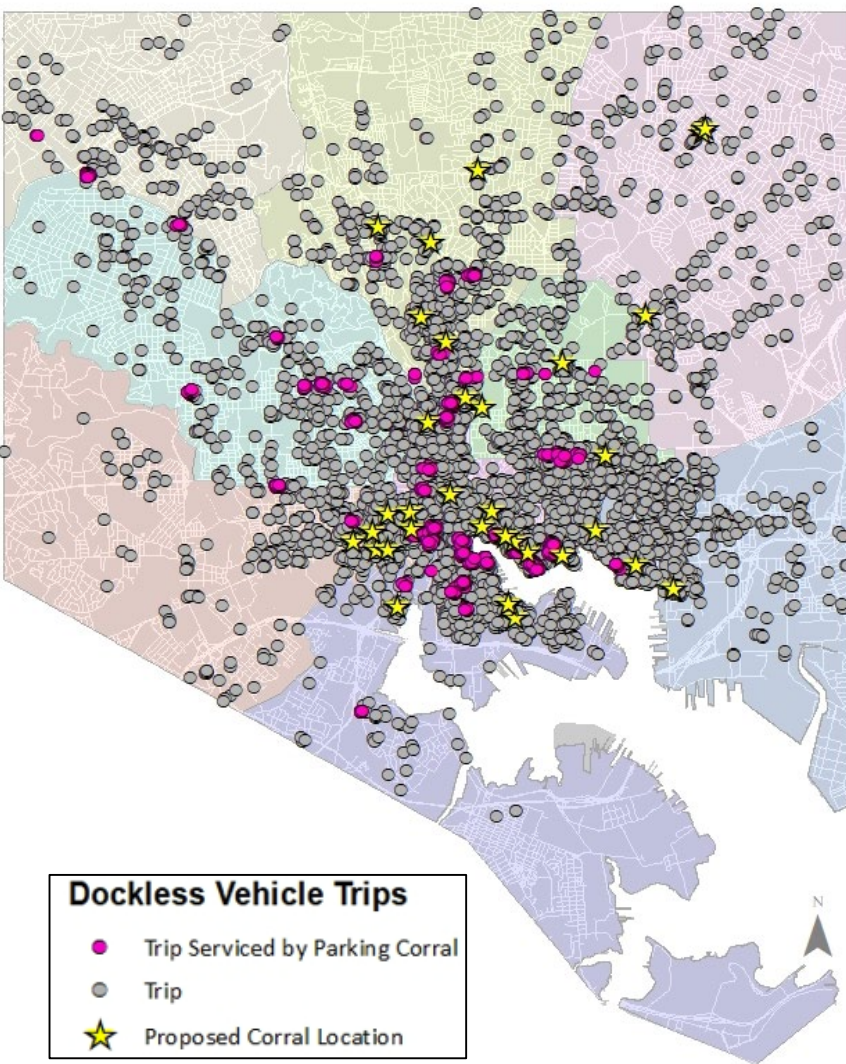




## Corrals and Transit

### Corral Installation Phases 1 & 2

**Priorities:** reduce vandalism, cover popular destinations, connect to transit, geographical equity





## BCDOT Priorities for the Future

- Permitting stability
  - Renewals for any company with zero citations
- Continue to reinvest permit fees:
  - \$100k – Program consultant & data dashboard
  - \$100k – Infrastructure
  - \$20k – Event support & vandalism response
- RFP to Improve Service and Equity
  - Adaptive Vehicles
  - Expanding Equity plans
  - Outreach to access zones





## Stay in Touch

- DOT website: [transportation.baltimorecity.gov](https://transportation.baltimorecity.gov)
- Report once-off issues directly to companies (contact info on vehicles)
- Report on-going issues, questions or concerns to [dot-community@baltimorecity.gov](mailto:dot-community@baltimorecity.gov)
- Join policy conversations by subscribing to monthly mailers and quarterly meetings

