



Baltimore Regional Transportation Board

Regional Bicycle and Pedestrian Counts

BPAG

May 18, 2022



Agenda

- Overview
- Regional Bicycle and Pedestrian Count Program
- Pilot Project Update
- Spring Counts
- Next Steps

Overview

- **Traffic Count Contract**
 - Three year contract with AMT Consulting
 - Contract includes ability to conduct bicycle and pedestrian counts
- **Fall 2021 Pilot Project**
 - One count site in each jurisdiction (total eight)
 - Continuing data cleanup and analysis
- **Developing Regional Count Program**
 - Informed by pilot project and spring 2022 count
 - Current focus:
 - Project specific: before/after counts, potential permanent counter locations, safety assessments
 - Potential expansion into cyclical counts
 - Develop in coordination with BPAG members, member jurisdictions, and planning partners

Regional Bicycle and Pedestrian Count Program

- **Weeklong counts conducted throughout the region on a project specific basis**
 - Project specific counts: before/after counts, potential permanent counter locations, safety assessments
- **Development of program**
 - Create list of project specific count locations
 - Detailed description of count need, timing, and goals/purpose
 - Latitude/Longitude
 - And more
 - Continue to assess achievable program goals
 - Create data management and sharing plan
 - Explore resources required for data analysis and use

Recommended Goals

Inform prioritization of bike/ped improvements

Begin process to determine baseline bike/ped volumes

Track before/after volumes in locations with improvements

Determine user type (commuter, recreational, mix)

Assist in the selection of continuous count locations

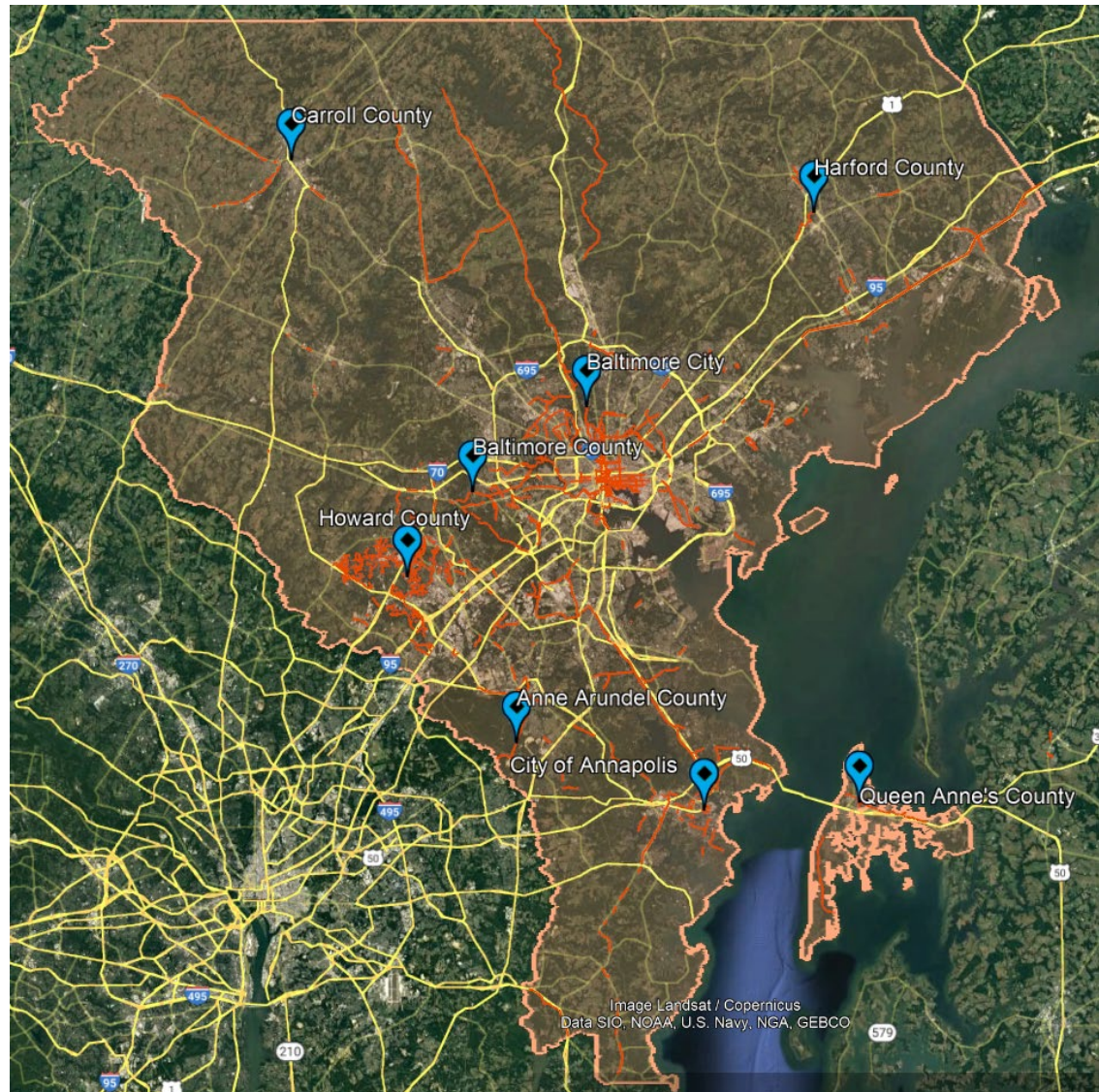
Contribute to statewide bike/ped count database

Document increase/decrease of users on a facility over time

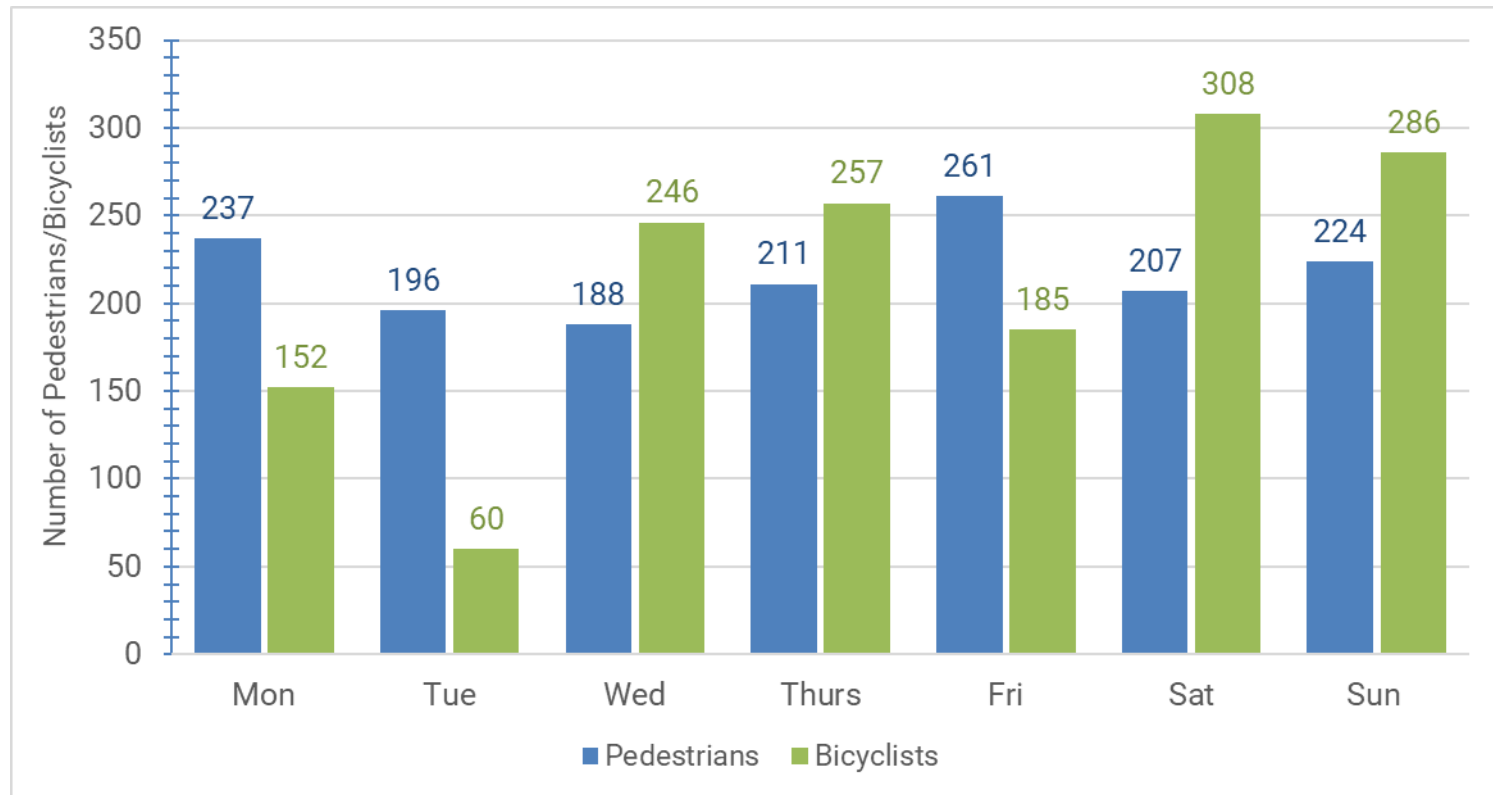
Leverage the use of emerging technologies

Pilot Project: Bicycle and Pedestrian Counts

- Weeklong counts conducted in October 2021
- One count site in each jurisdiction (eight total)
- Located on a variety of facilities
- Selected through input by BPAG members



Queen Anne's County Cross Island Trail



Pilot Project: Lessons Learned

- **General**

- Reemphasize screenline vs turning movement count requirements to consultant
- Ensure screenline count locations are at pinch points
- Clearly defined goals set for each count location

- **Equipment Deployment**

- Notify BMC in advance of deployment date for a count location
- Place equipment on ROW on non-residential property as first choice
- Notify BMC if count location needs to be moved

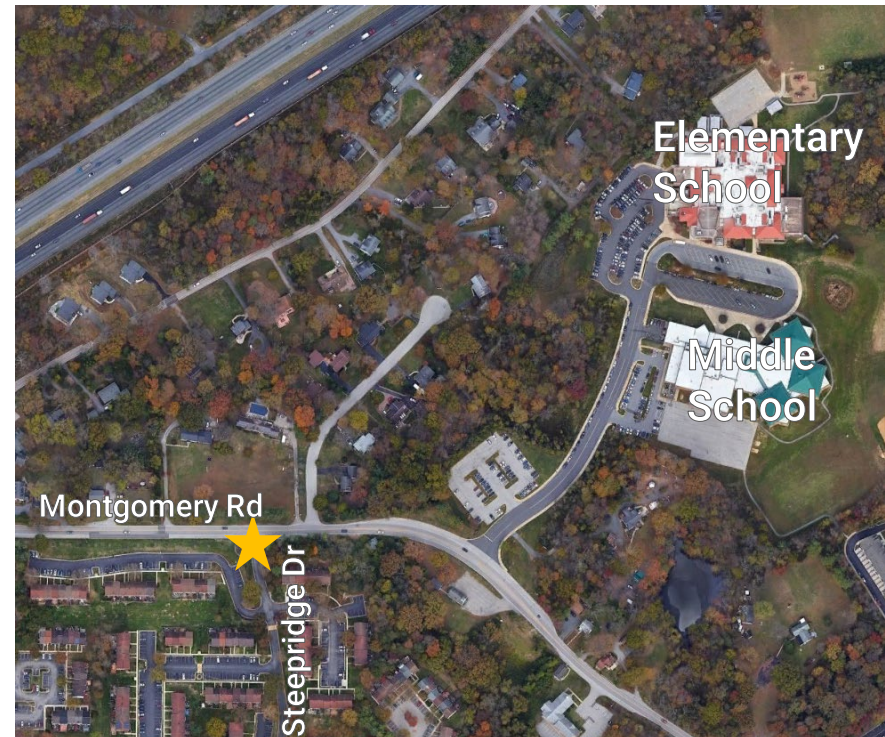
- **Deliverables**

- Consistent ID numbers for approaches
- 15-min interval volume summary



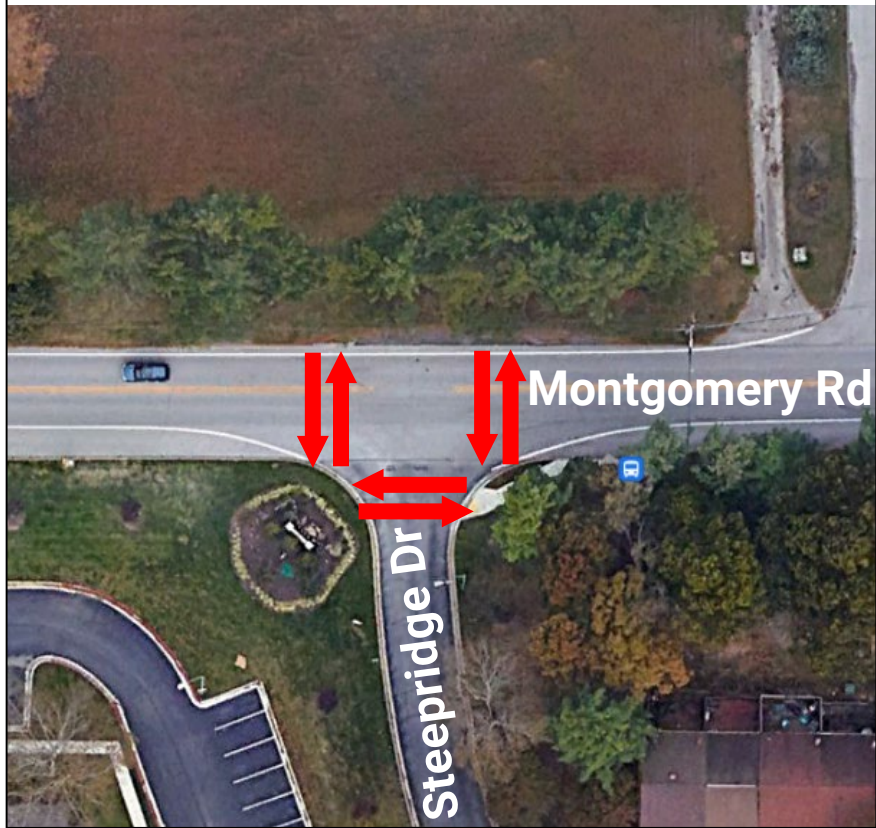
Howard County: Montgomery Road at Steepridge Drive

- **Project specific count**
 - May/June 2022
 - While school is in session
- **Description**
 - New sidewalk is being installed on both sides of Montgomery Rd between Rowanberry Dr and Timberlee Rd
 - New pedestrian crossing across Montgomery Rd with refuge island just west of Steepridge Dr
- **Purpose**
 - Quantify change in bicycle and pedestrian volumes after implementation of new sidewalks and pedestrian crossing

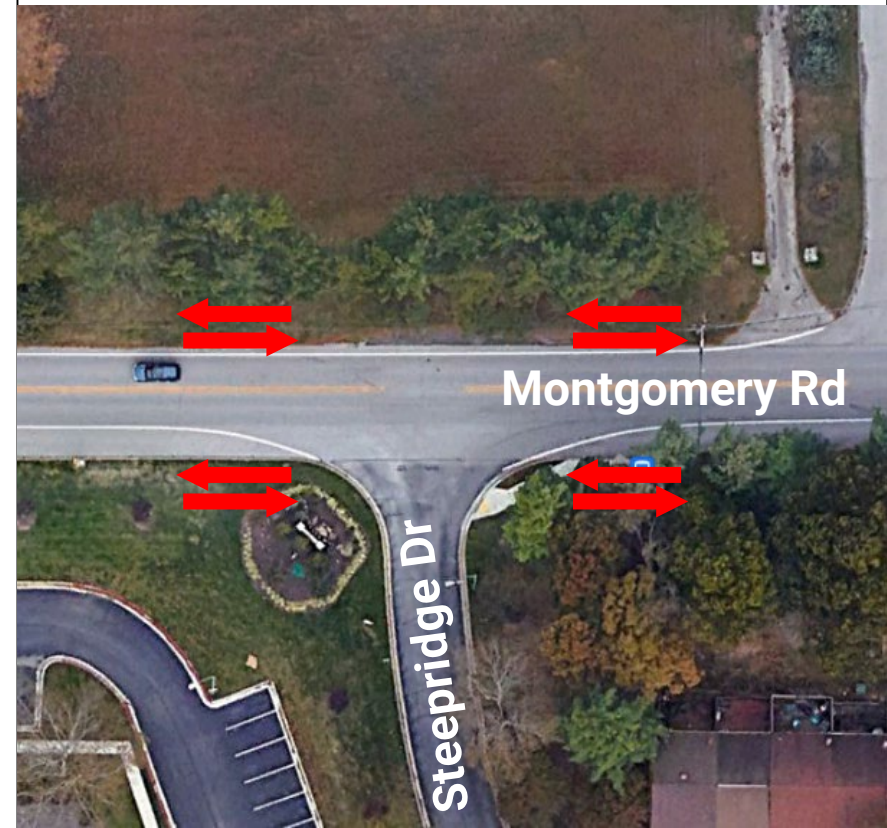


Howard County: Montgomery Road at Steepridge Drive

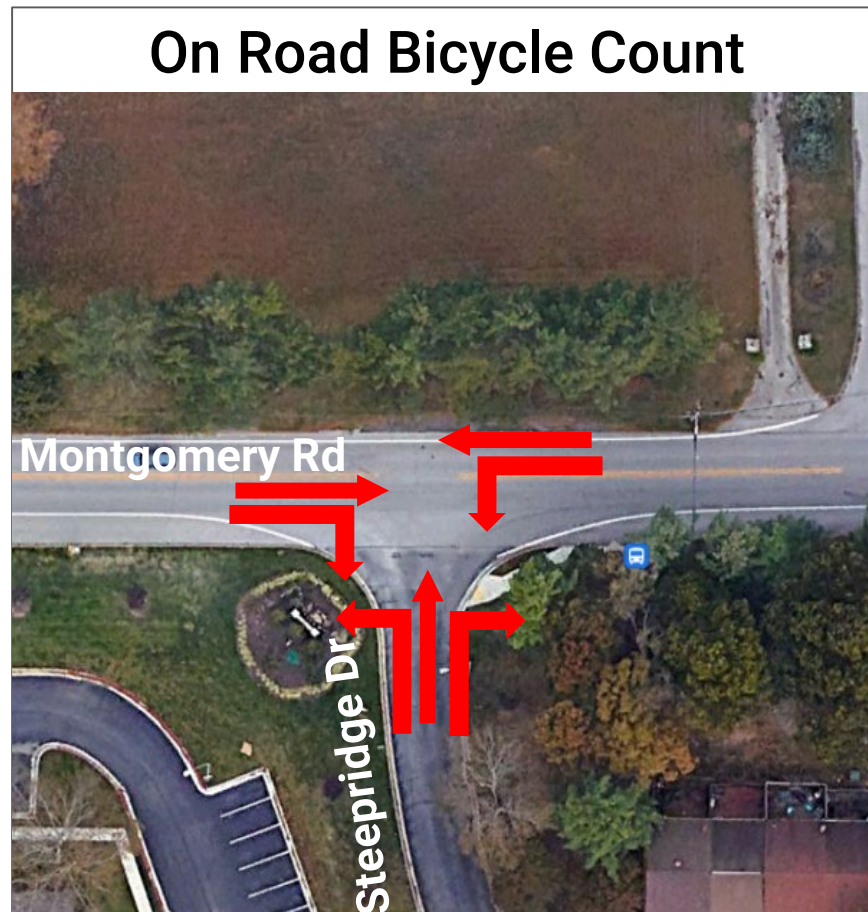
Ped/Bicycle Crosswalk Count



Pedestrian Screenline Counts



Howard County: Montgomery Road at Steepridge Drive



Example Count Spreadsheets

- Crosswalk Count

HOUR ENDING	South Crosswalk				East Crosswalk				West Crosswalk			
	EB		WB		NB		SB		NB		SB	
	Ped	Bike	Ped	Bike	Ped	Bike	Ped	Bike	Ped	Bike	Ped	Bike
06:15												
06:30												
06:45												
07:00												
07:15												
07:30												
07:45												
08:00												
08:15												

- Screenline Count

DATE(m/d/y):									Daily	Wkday	Wkend
End Time	Sun	Mon	Tue	Wed	Thu	Fri	Sat		Avg.	Avg.	Avg.
6:15											
6:30											
6:45											
7:00											
7:15											
7:30											
7:45											
8:00											
8:15											

Example Count Spreadsheets

- Turning Movement Count

Street Name-->															
HOUR	From South					From East					From West				
ENDING	U turn	Left	Through	Right	Total	U turn	Left	Through	Right	Total	U turn	Left	Through	Right	Total
06:15					0					0					0
06:30					0					0					0
06:45					0					0					0
07:00					0					0					0
07:15					0					0					0
07:30					0					0					0
07:45					0					0					0
08:00					0					0					0
08:15					0					0					0

Next Steps

May	Consultant conduct counts with updated turning movement, screenline, and crosswalk spreadsheets
June	Consultant processes data
July 20	BMC staff present count data to BPAG
July/August	Fall count locations are updated/submitted and selected
September/ October	Potential months for fall counts

For More Information

Charlene Mingus | Active Transportation Planner

410.732.0500 x1008 | cmingus@baltometro.org | www.baltometro.org



@BALTOMETROCOUNCIL



@BALTIMORE METROPOLITAN COUNCIL



@BALTIMORE METROPOLITAN COUNCIL

