



Online Crash Data Dashboard

Update to BPAG

March 17, 2021

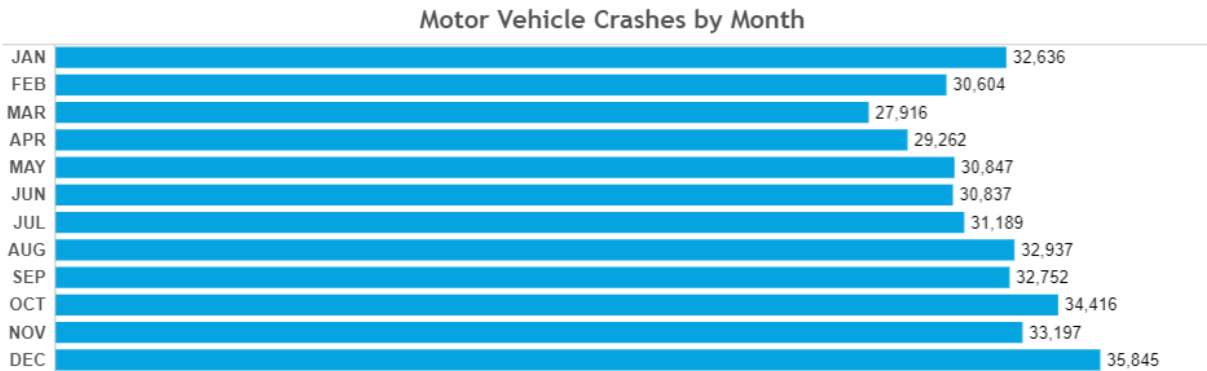
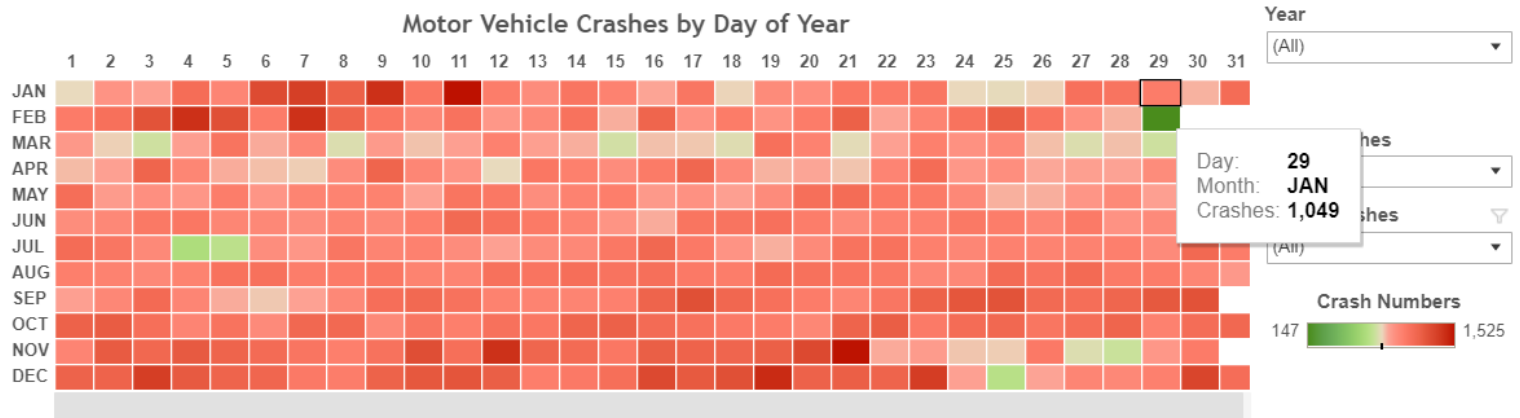


Project Development

- Association of Metropolitan Planning Organizations (AMPO) annual conference sessions
- BRTB and Technical Committee discussions
- Approved for inclusion in FY 2022 UPWP

Denver Regional Council of Governments

- < Where do crashes occur?
- What are the Most Common Types of Crashes?
- Which Human Factors Cause Accidents?
- When Do Accidents Happen? >



Source: "2010-15 CDOT Crash Data". Denver Regional Council of Governments. 2018.

<https://drcog.org/services-and-resources/denver-regional-visual-resources/crashes-on-our-roadways>



Go to crash data topic

[Explore Crash Data](#)

[Storymap Navigation Tips](#)

[All Fatal Crashes](#)

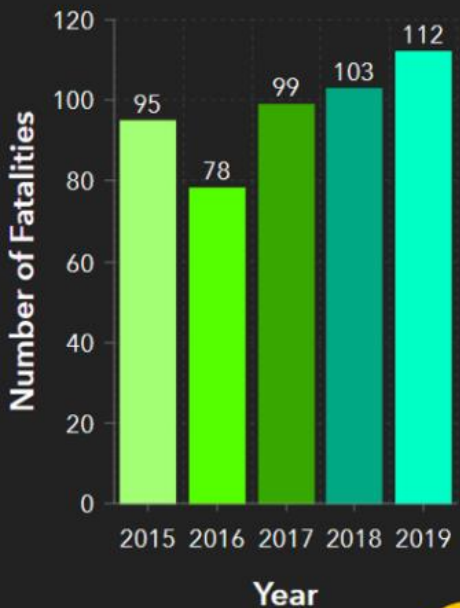
[Pedestrian Crashes](#)

[Light Condition](#)

Mode Filter: No Filter

Year Filter: No Filter

Fatalities by Year, 2015 - 2019



Filter data

Map tools

Click a point to view crash details

View other graphs

Zoom in/out

Legend

Fatal Crash Events by Mode Type

- Vehicle
- Pedestrian
- Bike

Prince George's County

<https://www.princegeorgescountymd.gov/3583/Crash-Data-and-Trends>

Next Steps

- **Develop ideas for**
 - Webpage layout
 - Analysis categories and queries
 - Visualizations
- **Seek input and feedback from BPAG and other BRTB committees throughout development**
- **Please start thinking of ideas, work begins in a few months**

For More Information

Cindy Burch | Transportation Planner - Safety

410-732-0500 x1051 | cburch@baltometro.org | www.baltometro.org



@BALTOMETROCOUNCIL



@BALTIMORE METROPOLITAN COUNCIL



@BALTIMORE METROPOLITAN COUNCIL

