

MDOT MTA Patapsco Ave Ped/Bike Bridge Phase 1

**BRTB Bicycle and Pedestrian Advisory Group (BPAG)
March 17, 2021**



**MARYLAND TRANSIT
ADMINISTRATION**

Crossing Patapsco Ave:

A Safety and Trail Connectivity Issue

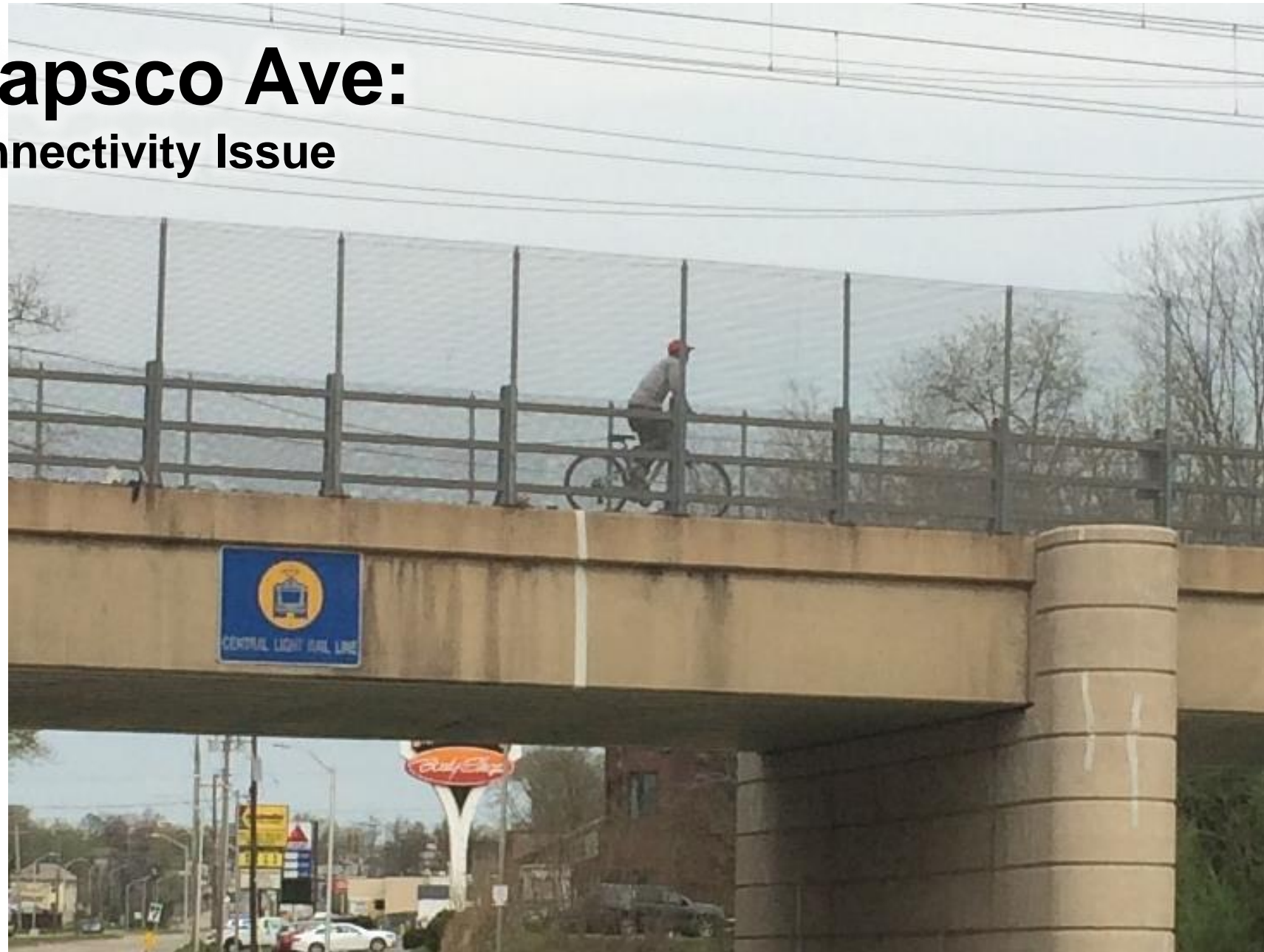
- Longstanding challenge of no safe pedestrian connection between Cherry Hill neighborhood and Patapsco Light Rail
- Over 300 pedestrians have been observed walking across the Light Rail Bridge to get to the Station daily



Crossing Patapsco Ave:

A Safety and Trail Connectivity Issue

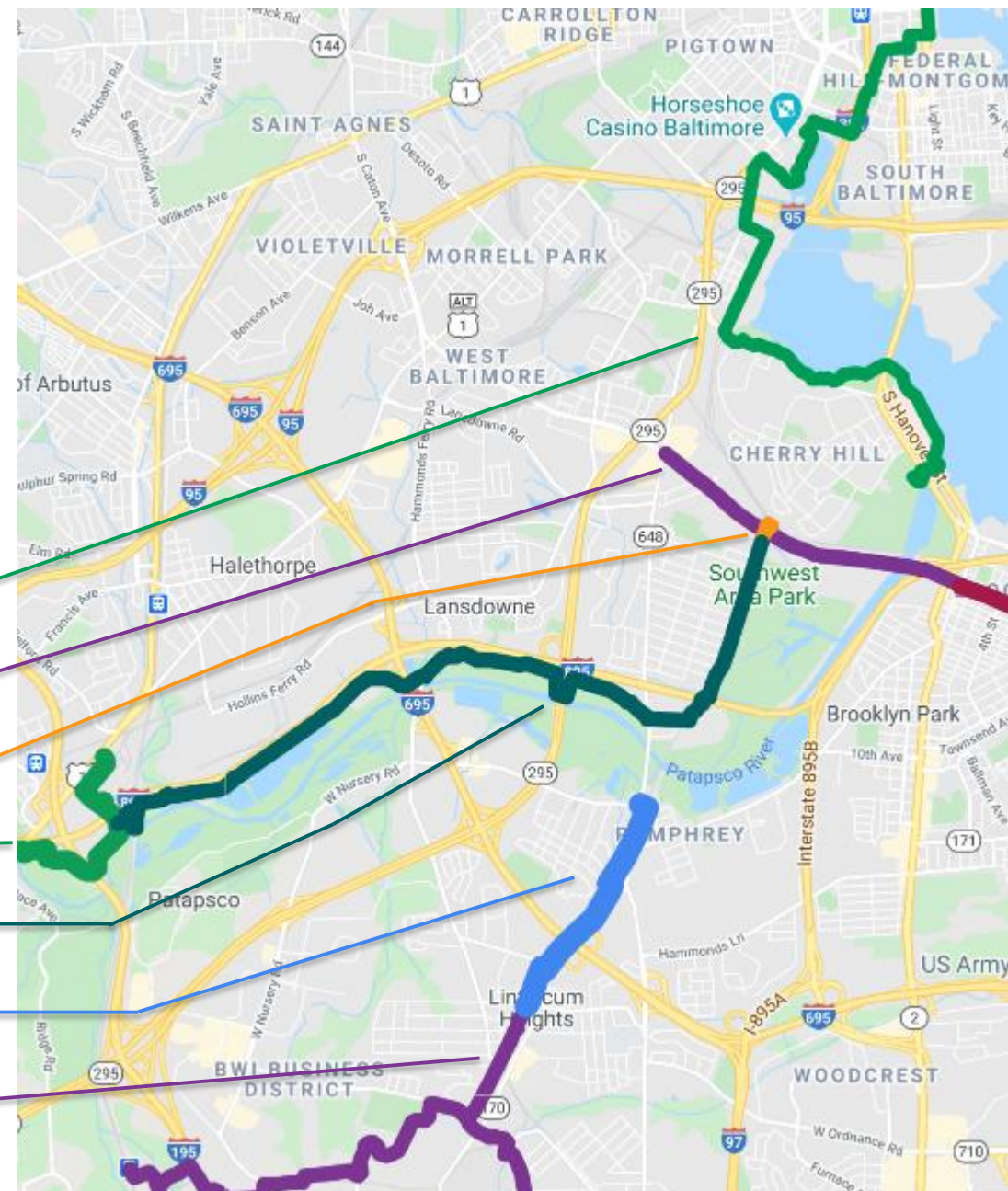
- MDOT MTA Light Rail Operators wait to make sure no one is crossing and go over the bridge slowly
- Audible warnings when train is approaching



Crossing Patapsco Ave:

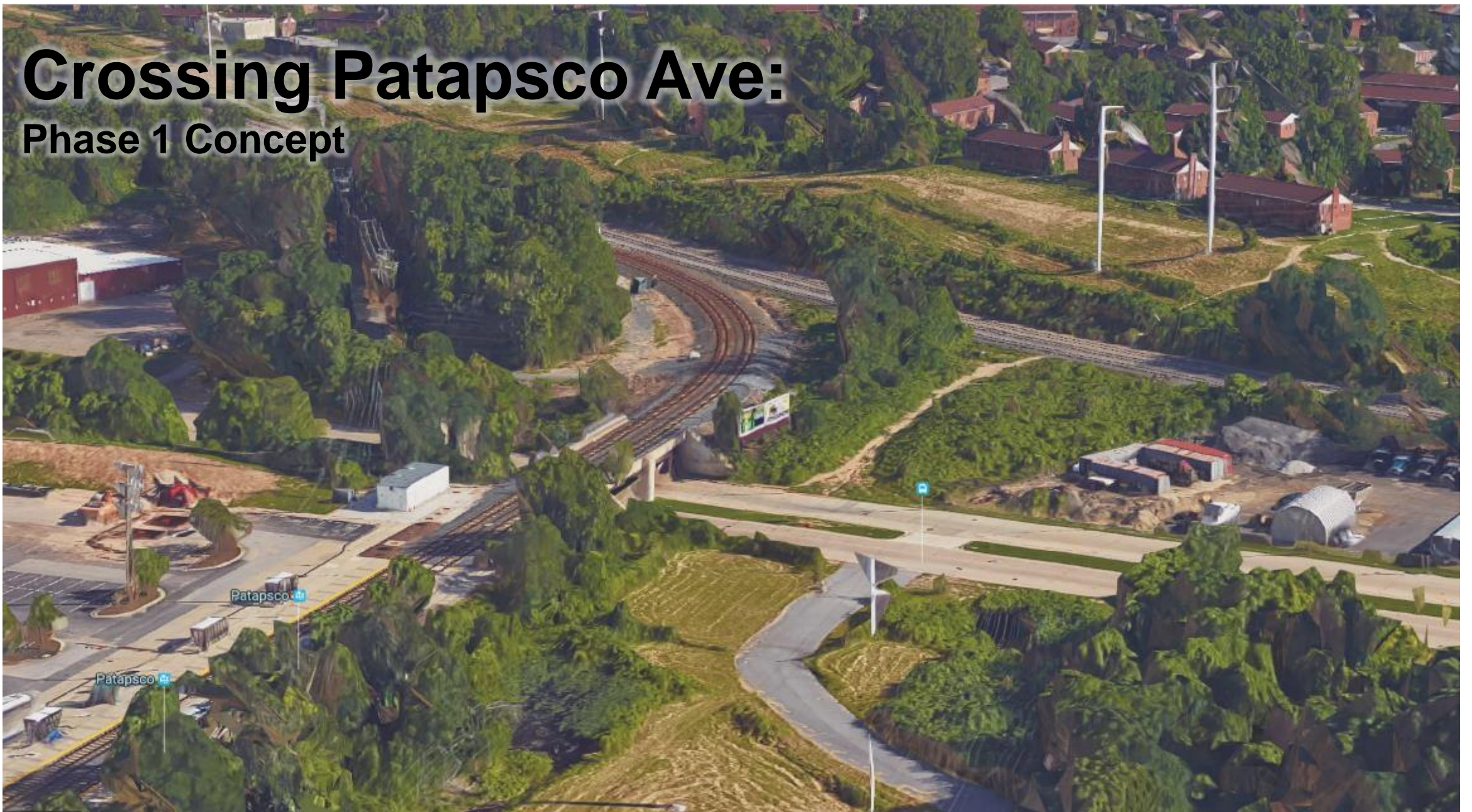
A Safety and Trail Connectivity Issue

- Patapsco Ave Ped/Bike Bridge is key connection for the expanding trail network in this area
 - Middle Branch Trail
 - W. Patapsco Avenue Rehabilitation
 - Patapsco Ave Phase 1 Ped Bridge
 - Patapsco Greenway – Elkridge to Guinness
 - Patapsco Greenway – Guinness to City
 - AA Co. BWI Extension – Maple to Nursery
 - BWI Trail



Crossing Patapsco Ave:

Phase 1 Concept



Crossing Patapsco Ave:

Phase 1 Concept

EXISTING RIGHT-OF-WAY LINES

PROPOSED LIMIT OF DISTURBANCE

EXISTING OVERHEAD TRANSMISSION WIRES

BASELINE OF PEDESTRIAN ACCESS ALIGNMENT

PROPOSED SHARED USE PATH ON FILL

PROPOSED BRIDGE CROSSING

PROPOSED SHARED PATH ON FILL

PROPOSED STAIRWAY CONNECTION

PROPOSED LIMIT OF DISTURBANCE

FUTURE BIKE/PED. LANE BY BCDOT

PATAPSCO LIGHT RAIL STATION

BALTIMORE AVE

BETHUNE RD.

W. PATAPSCO AVE

COX CURTIS BRANCH LINE

HOUSING AUTHORITY OF BALTIMORE CITY

CSX TRANSPORTATION INC.

BALTIMORE GAS & ELECTRIC

JAMES TRANSPORT ADMINISTRATION

INDIANA AVE

BALTIMORE ST

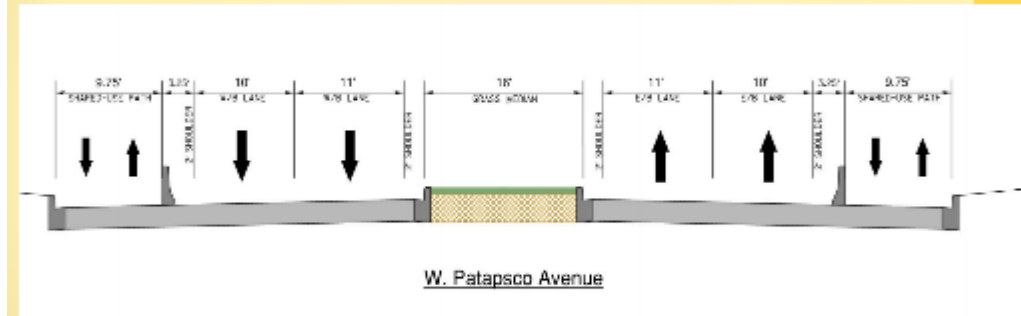
COFART OF CONNECTICUT INC.

Crossing Patapsco Ave:

Connecting to Baltimore City Investments

- City's 4 Lane, 2 Path option would allow for MDOT MTA's Phase 1 bridge concept to connect the Patapsco Light Rail Station to an on-street bicycle and pedestrian facility on the north side of Patapsco Avenue
- City is also considering a 3 Lane, 1 Path, & Median Option that isn't compatible with the Phase 1 Bridge

Concept Alternative 4 Lane – 2 Path



[18]

Concept Alternative 4 Lane – 2 Path



Crossing Patapsco Ave:

Designing from Concept to 100%

- MDOT MTA received a Transportation Alternatives grant to advance the project design to 100%
- Currently anticipating design starting Summer 2021 and completing in Fall 2022
- Have been coordinating with various property owners that would be affected
- Ginger Dadds in MDOT MTA's Office of Engineering & Construction is the Project Manager for that effort



Contact Information:

Virginia Dadds, PE
Project Manager
Maryland Environmental Service

Maryland Transit Administration

Office of Engineering & Construction
6 Saint Paul Street, 6th Floor, Baltimore MD 21202

Office: 410-767-3856 **Fax:** 410-333-0378

vdadds@mdot.maryland.gov

