

Maryland Highway Safety Office: Pedestrian and Bicycle Safety Program

Baltimore Regional Transportation Board
Bicycle and Pedestrian Advisory Group

July 18, 2018



MARYLAND DEPARTMENT
OF TRANSPORTATION

MOTOR VEHICLE
ADMINISTRATION

*Maryland
Highway
Safety
Office*



MARYLAND

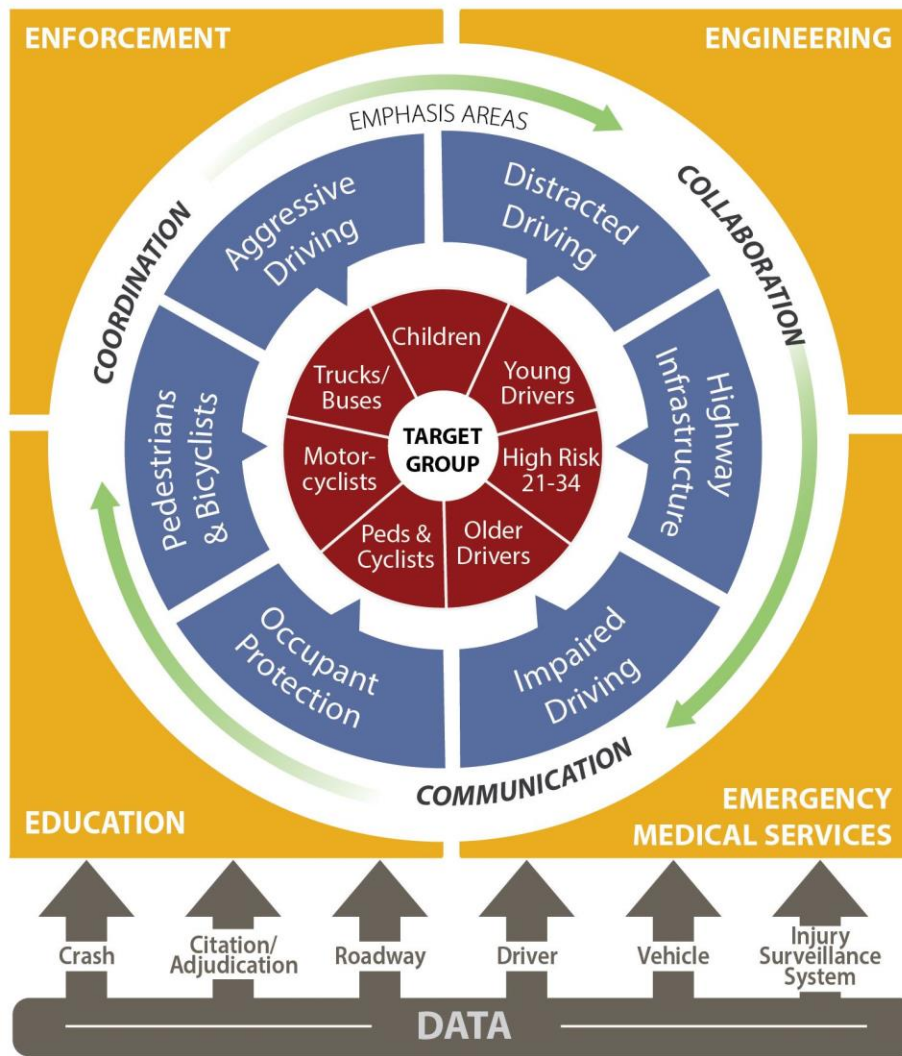
MARYLAND STRATEGIC HIGHWAY SAFETY PLAN



2016 - 2020

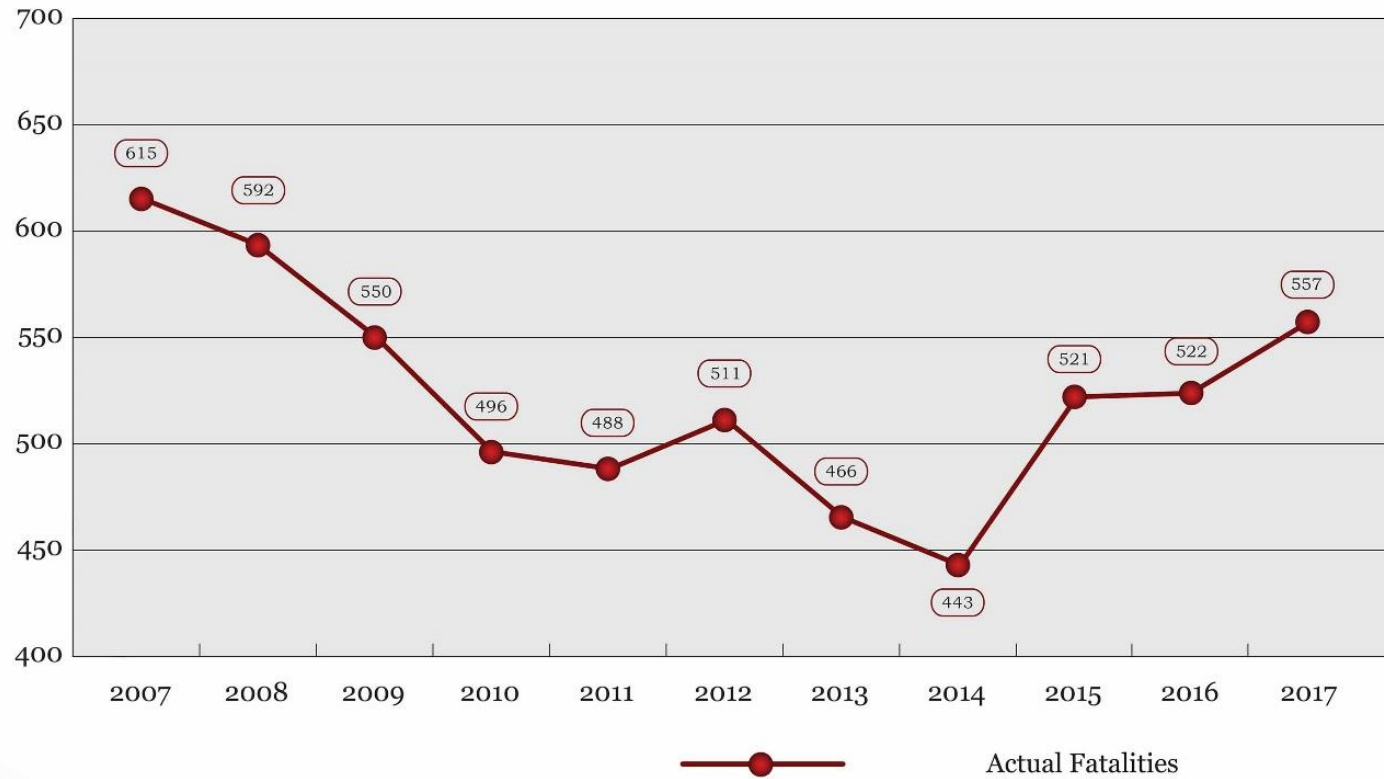


Maryland's Path Forward

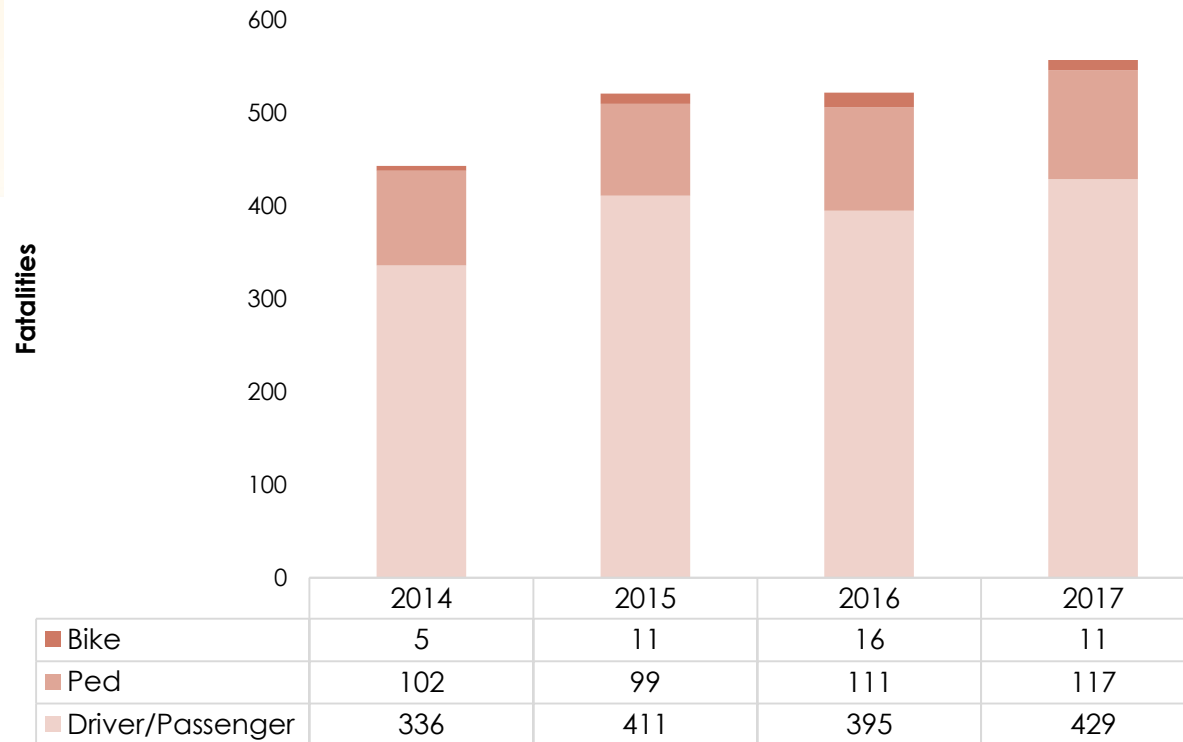


MARYLAND

MARYLAND ROADWAY FATALITIES 2007 - 2017

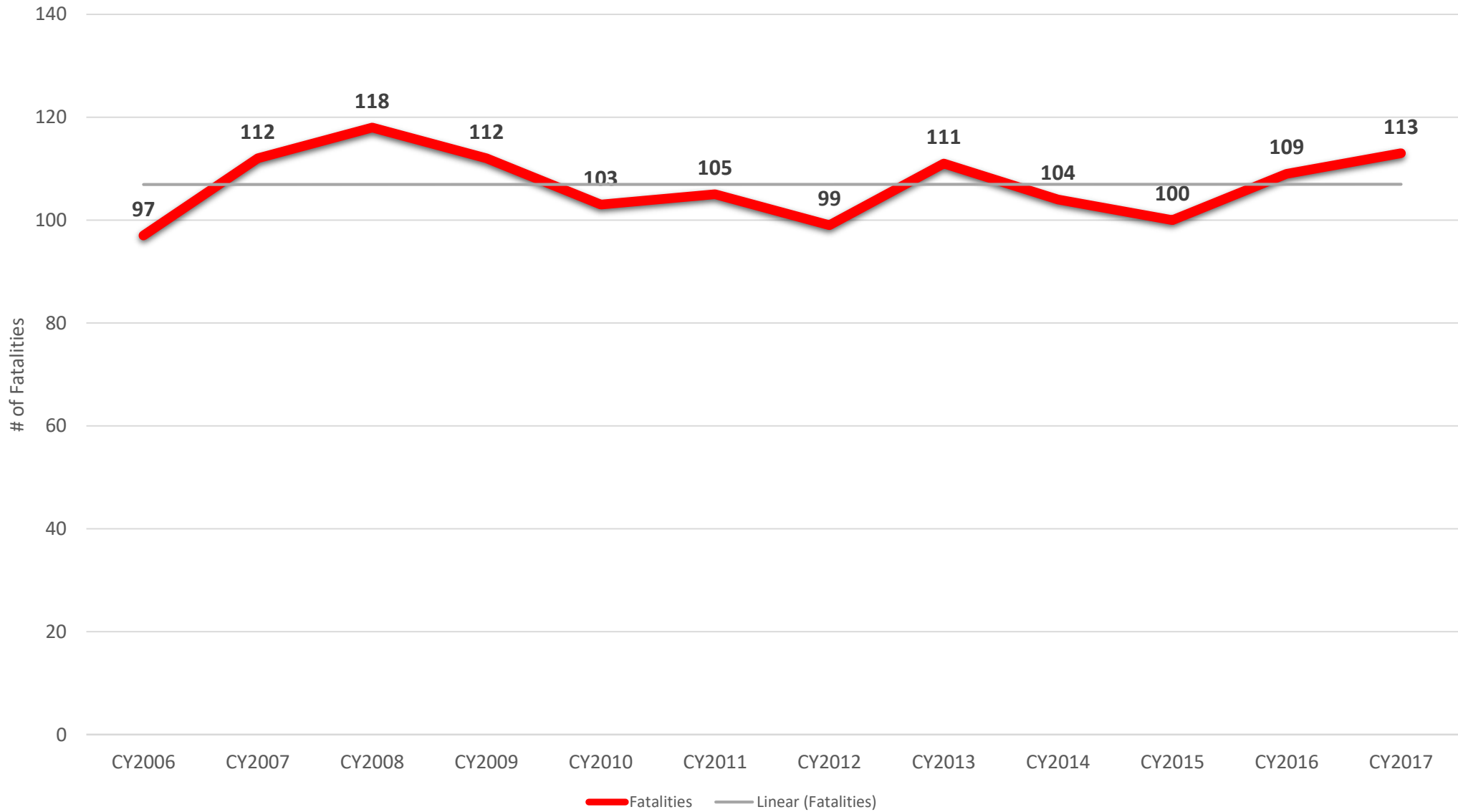


Total Fatalities CY2014-2017



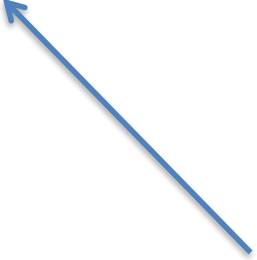
Statewide Pedestrian Related Vehicle Collisions

Total Count Per Calendar Year (Fatalities-Pedestrians On Foot)

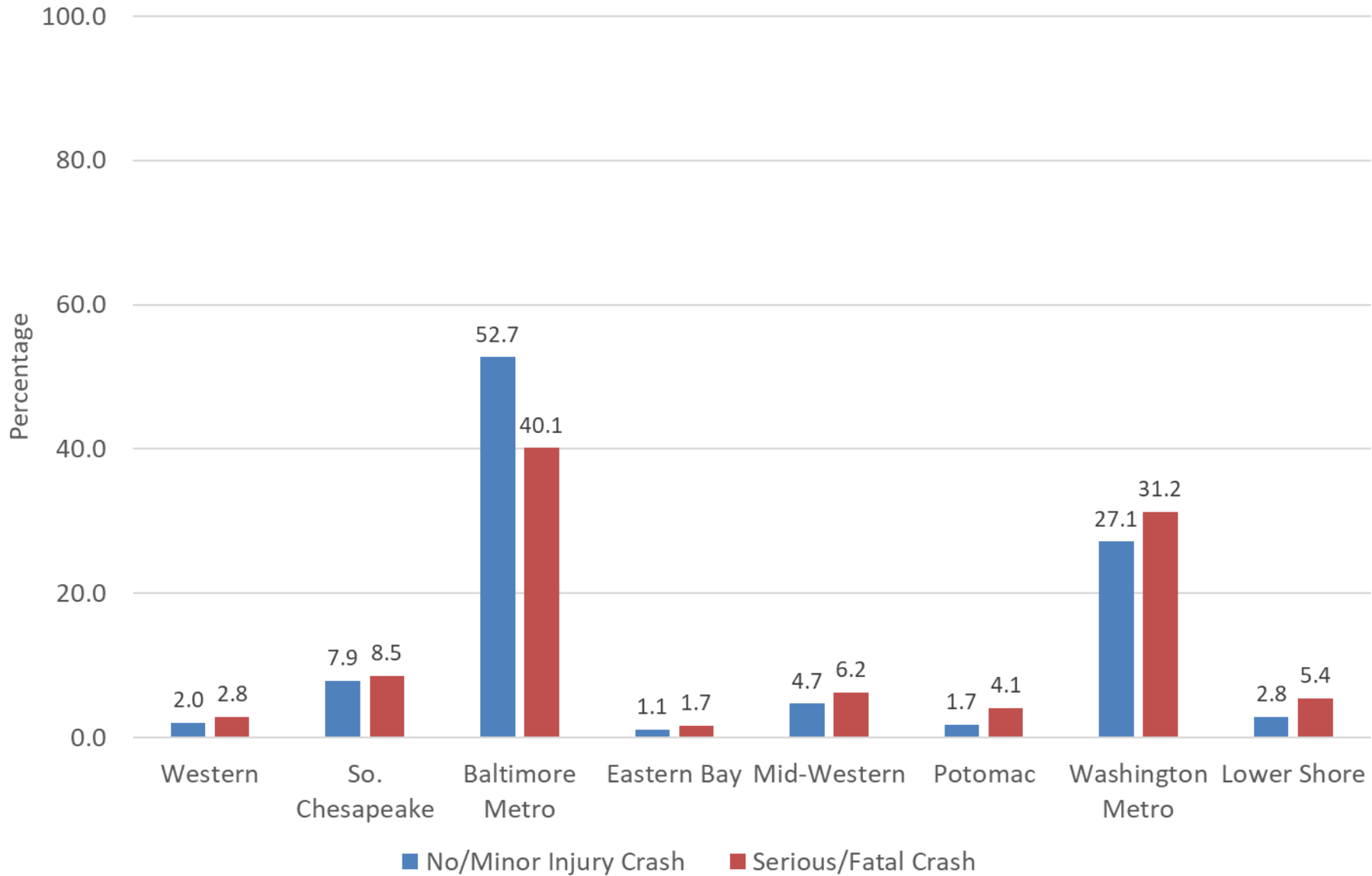


Number of Pedestrian-involved Crashes by Jurisdiction 2012-2016	
Jurisdiction	Total
Baltimore City	4,925
Baltimore	2,295
Montgomery	2,161
Prince Georges	2,009
Anne Arundel	1,113
Howard	296
Washington	260
Frederick	257
Harford	239
Worcester	236
Wicomico	217
Cecil	187
Charles	185
Carroll	182
St. Marys	123
Calvert	89
Dorchester	55
Talbot	52
Allegany	34
Queen Annes	31
Somerset	29
Garrett	24
Kent	22
Caroline	17
Total	15,038

83.3% of all pedestrian crashes in Maryland occur in 5 jurisdictions

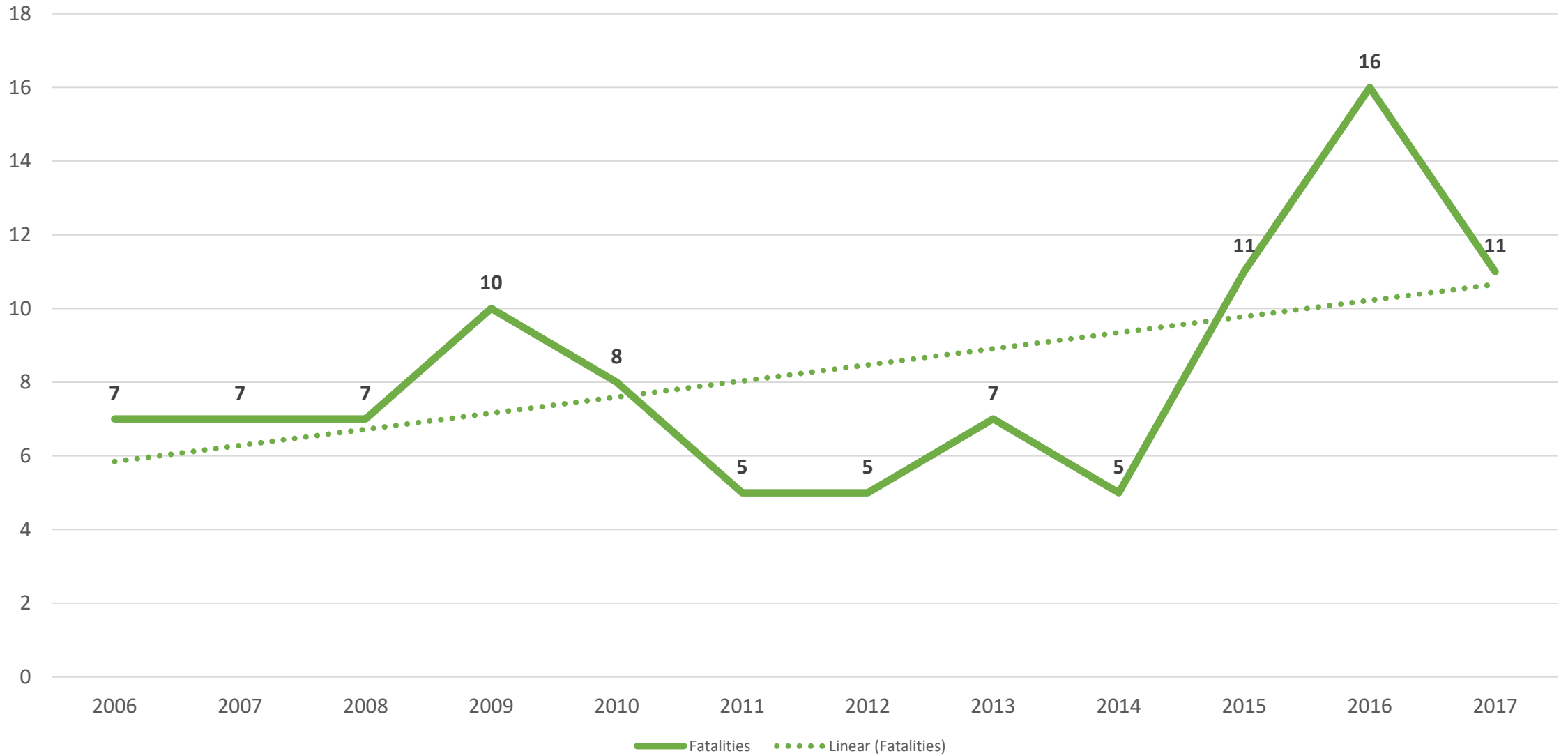


Percentage of Pedestrian-involved Crashes by Crash Severity and Region

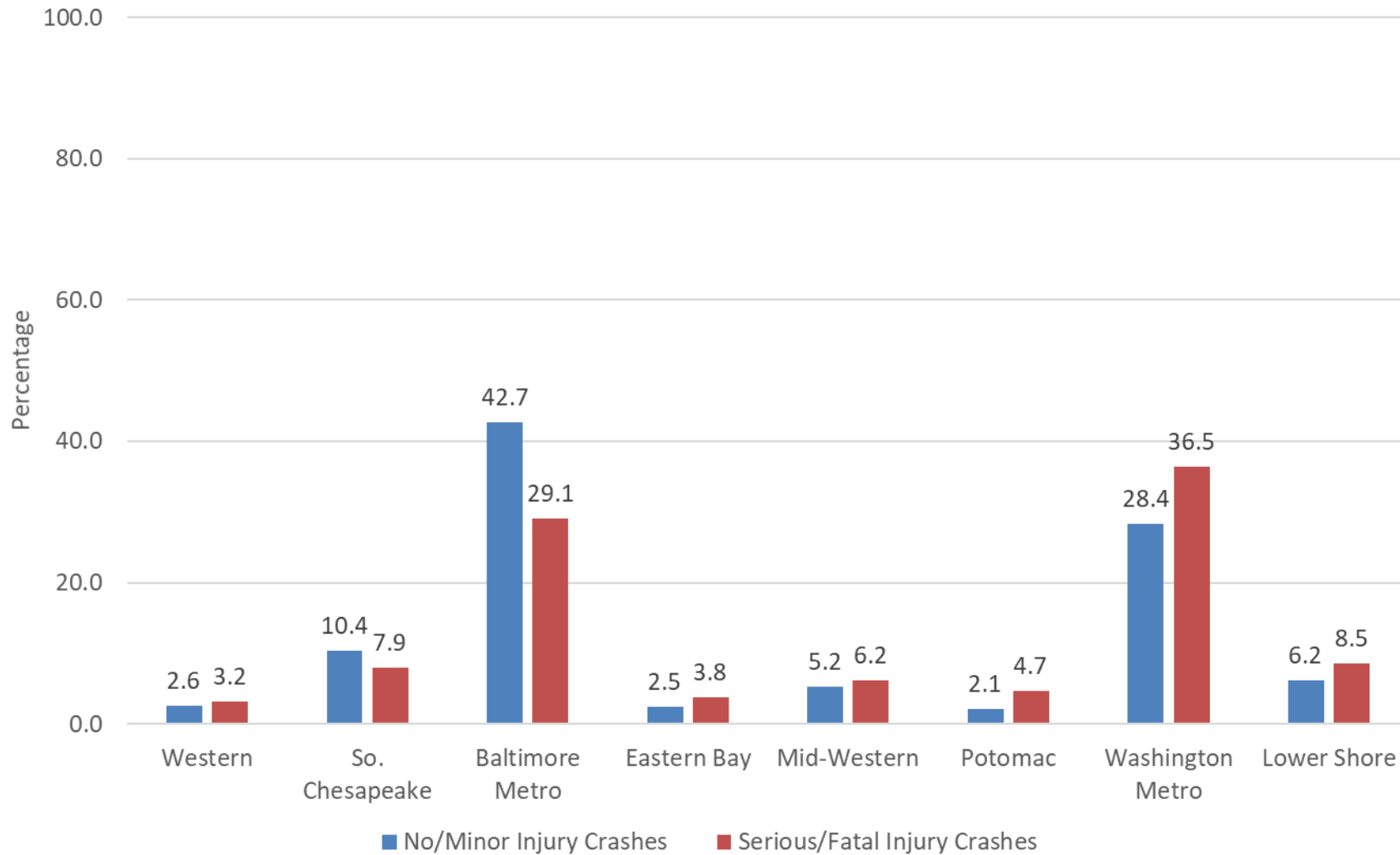


Statewide Bicyclist Collisions

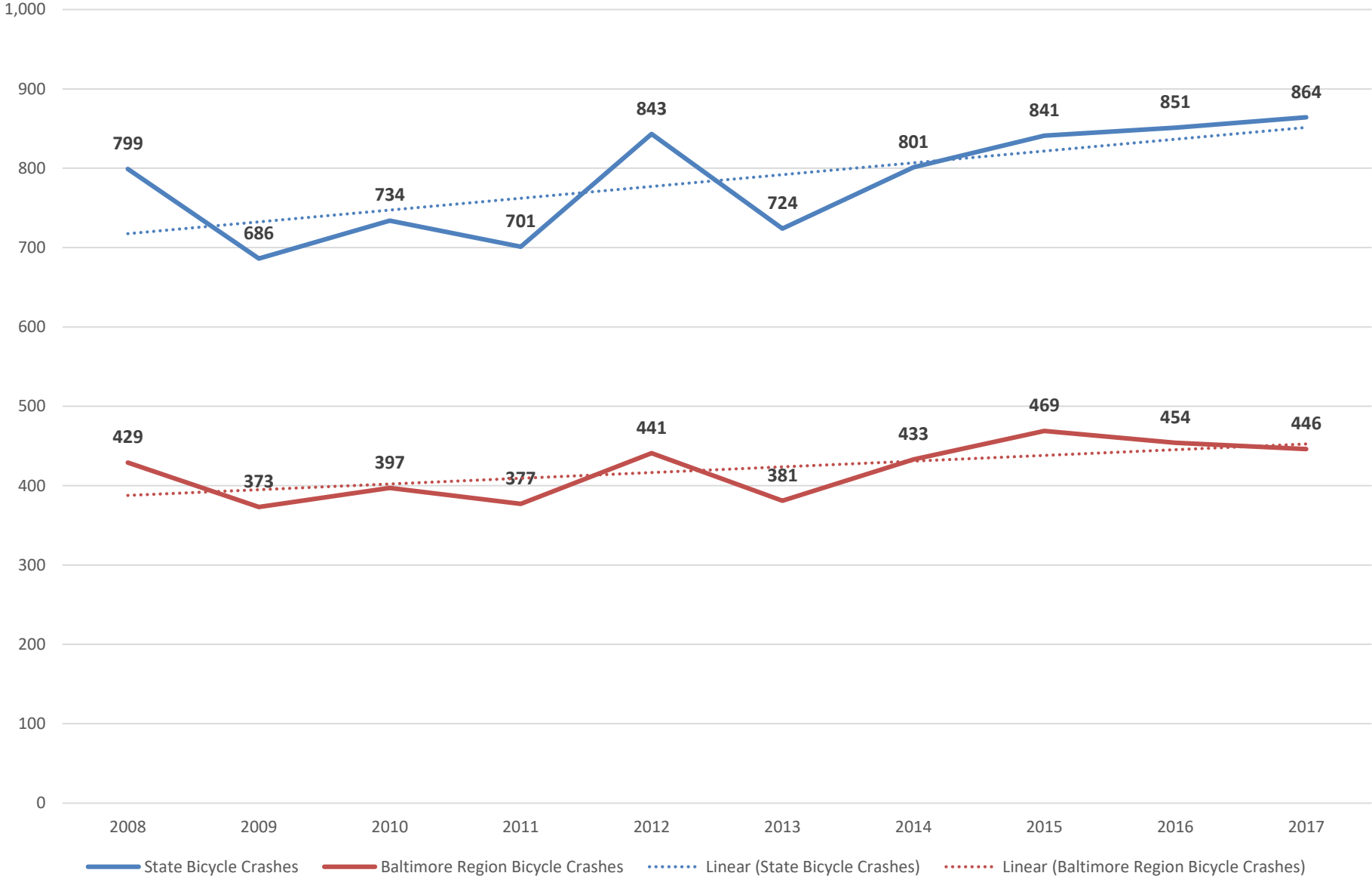
Total Count Per Calendar Year (Fatalities)



Percentage of Bicycle-involved Crashes by Crash Severity and Region

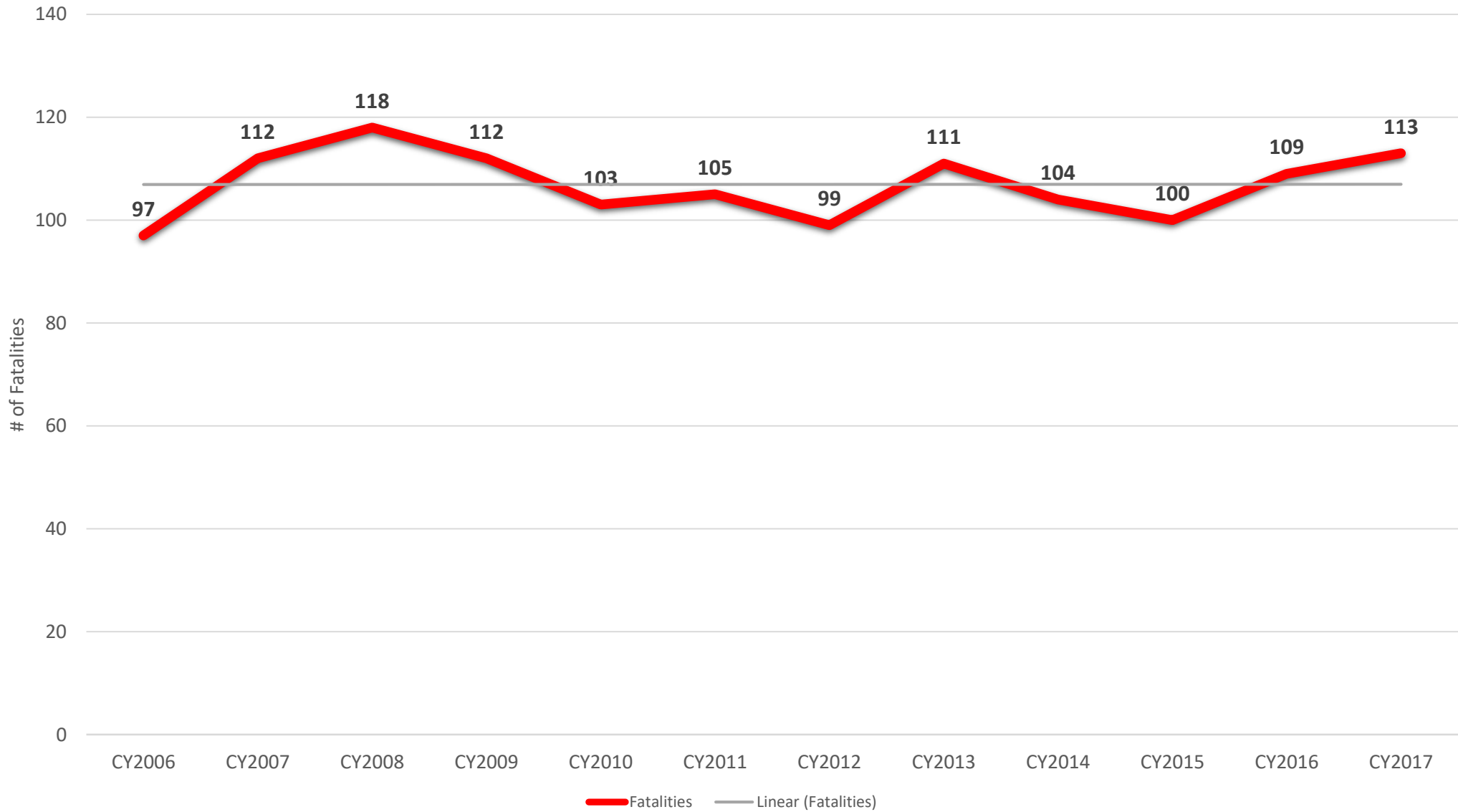


Bicycle Crashes - State of Maryland and Baltimore Region



Statewide Pedestrian Related Vehicle Collisions

Total Count Per Calendar Year (Fatalities-Pedestrians On Foot)



Montgomery County Fatal Pedestrian Related Vehicle Collisions Total Count Per Calendar Year (Fatal)



Collisions in High Incidence Areas by Year (2/3)

HIA	Number of Pedestrian Collisions										Total	Pre-Audit Average	Post-Audit Average	% Change
	2006	2007	2008	2009	2010	2011	2012	2013	2014					
Piney Branch	10	8	7	8	3	5	9	8	5	63	9.0	6.3	-30%	
Wisconsin	6	10	3	4	3	3	3	6	4	42	8.0	3.8	-52%	
Georgia	7	5	7	10	4	4	2	11	7	57	6.3	5.6	-12%	
Rockville Pike	4	3	9	8	2	3	2	4	4	39	5.3	3.0	-44%	
Four Corners	4	7	5	0	1	3	0	3	2	25	4.0	2.0	-50%	
Reedie	0	3	3	7	2	1	2	2	2	22	3.3	1.8	-46%	
Randolph	2	1	4	4	1	2	3	1	0	18	2.8	1.5	-45%	
Connecticut	4	5	6	2	2	3	3	3	2	30	3.8	2.7	-30%	
Colesville	4	4	2	3	5	2	4	3	5	32	3.6	4.0	+11%	
Old Georgetown	4	4	2	2	3	1	2	0	4	22	2.7	2.0	-25%	
Total	45	50	48	48	26	27	30	41	35	350				

Key:

Year of PRSA Audit

Increase in Collisions After Audit

Collisions Where SHA Applied Countermeasures - by Year (3/3)

HIA	Number of Pedestrian Collisions										Total	Pre-Action Average	Post-Action Average	% Change
	2009	2010	2011	2012	2013	2014	2015	2016	2017					
MD 528/Ocean City	5	2	3	9	5	5	4	1	4	38	4.8	3.5	-27%	
Rt. 1/College Park	3	2	2	4	4	10	2	3	0	30	4.2	1.7	-60%	
Total	8	4	5	13	9	15	6	4	4	68				

Key:

Year Countermeasures Employed

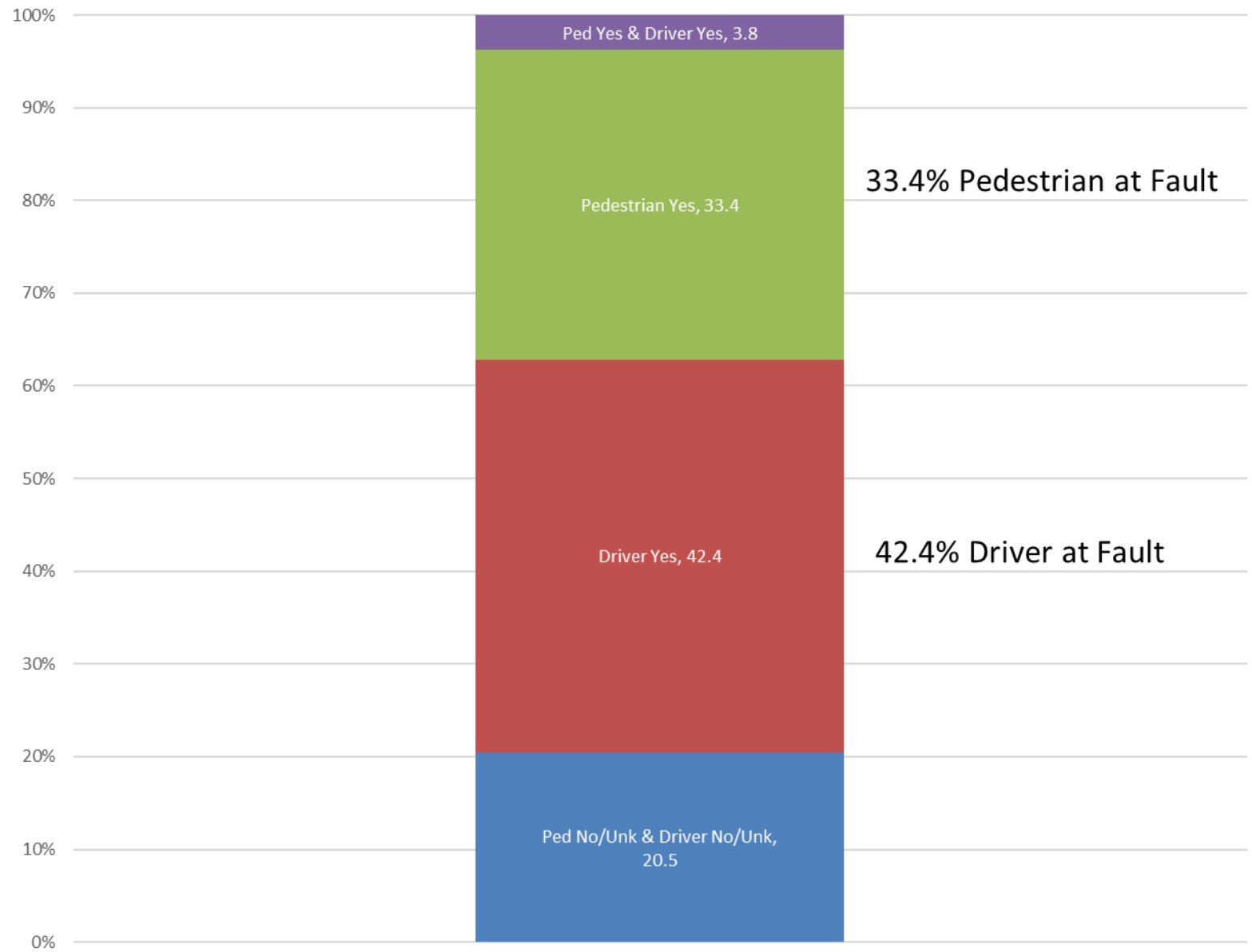
Common Belief:

Pedestrians are most often at fault in pedestrian crashes, especially in fatal crashes.

Explanation of Culpability

- A crash may include the following groups:
 - *1 pedestrian, 1 driver*
 - *1 pedestrian, 2 or more drivers*
 - *2 or more pedestrians, 1 driver*
 - *2 or more pedestrians, 2 or more drivers*
- Culpability Responses include:
 - *Yes, No, Unknown for both pedestrians and drivers allowing for 9 possible combination of responses*
- For Crashes involving 2 or more pedestrians or 2 or more drivers
 - *If any of the pedestrians were at fault, then pedestrian at fault was coded as “Yes”*
 - *If any of the drivers were at fault, then driver at fault was coded as “Yes”*

At Fault Status: Pedestrian and Driver 2012-2016



Current Strategies Being Implemented:

- Reestablish Baltimore Regional Street Smart Campaign (Led by BMC – Launch Spring 2019)
- Create a Pedestrian and Bicycle Fatality Review Team to Identify Systemic Statewide Safety Issues (2016 Reports)
- Enable Local Partner Jurisdictions to Target 4 E's Countermeasures, Sharing Crash Data
- Strengthen Support of Local Partner Jurisdictions with Local Strategic Highway Safety Plans

LOOK UP. LOOK OUT.



**CYCLISTS:
OBEY ALL SIGNS
AND SIGNALS**



MOT
MARYLAND DEPARTMENT
OF TRANSPORTATION

towardzerodeathsmd.com

LOOK UP. LOOK OUT.



WHEN DRIVING

Give 3 Feet When Passing Bicyclists



MDOT
MARYLAND DEPARTMENT
OF TRANSPORTATION

towardzerodeathsmd.com

Bike to the Ballpark

BIKE TO THE BALLPARK

SUNDAY, JULY 29



FREE TICKETS
TO THE FIRST 200 BICYCLISTS

>> **PLUS** >>

FREE BIKE PARKING AND
FREE BIKE LIGHT INSTALLS!

Questions?

Jeff Dunckel

Pedestrian-Bicycle Safety Program
Manager

410-787-7743

jdunckel@mdot.state.md.us



MARYLAND DEPARTMENT
OF TRANSPORTATION

MOTOR VEHICLE
ADMINISTRATION

Maryland
Highway
Safety
Office



MARYLAND