

### Hanover Road Corridor Improvement

<b>TIP ID</b>	11-1801-42	<b>Year of Operation</b>	2021
<b>Agency</b>	Anne Arundel County	<b>Project Type</b>	New or extended roadways
<b>Project Category</b>	Highway Capacity	<b>Functional Class</b>	Other Principal Arterial
<b>Conformity Status</b>	Exempt	<b>Physical Data</b>	0.4 miles
<b>CIP or CTP ID(s)</b>	H566700 (CIP) & AA372-11 (CTP)	<b>Est. Total Cost</b>	\$14,342,000

**Description:**

This project is to provide design, right-of-way acquisition and construction of a section of Hanover Road on a new alignment between Ridge Road and New Ridge Road in Hanover.

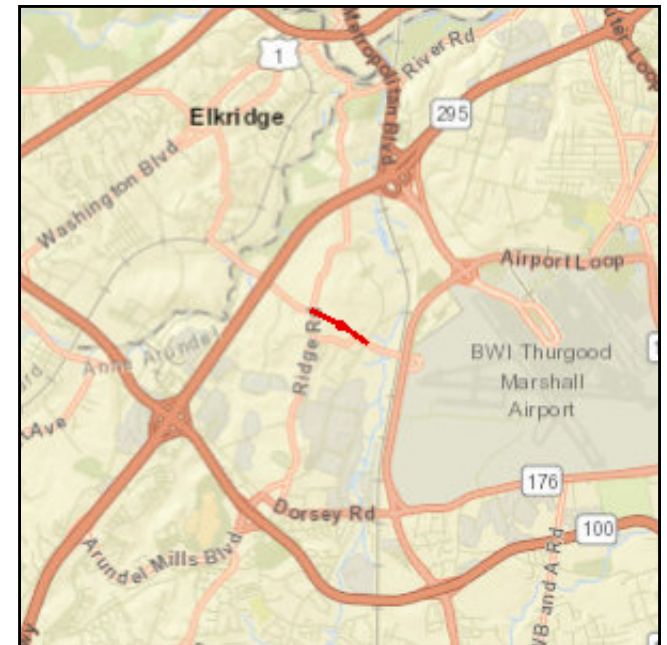
PE was programmed in FY 2017.

**Justification:**

This project is a breakout project from the MD 295 Project Planning Study that has a signed FONSI.

**Connection to Long-Range Transportation Planning Goals:**

- 4. Increase Mobility
- 7.E Promote Prosperity and Economic Opportunity -- Improve access to existing communities and regional generators of economic activity.





Hanover Road Corridor Improvement

(Funding in Thousands)

Other

Phase	FY 2019 Federal Funds	FY 2019 Matching Funds	FY 2020 Federal Funds	FY 2020 Matching Funds	FY 2021 Federal Funds	FY 2021 Matching Funds	FY 2022 Federal Funds	FY 2022 Matching Funds	Total Four-Year Funding Request
CON	\$0	\$0	\$0	\$3,996	\$0	\$0	\$0	\$0	\$3,996
OTH	\$0	\$455	\$0	\$200	\$0	\$0	\$0	\$0	\$655
PE	\$0	\$0	\$0	\$0	\$0	\$0	\$0	\$0	\$0
PP	\$0	\$0	\$0	\$0	\$0	\$0	\$0	\$0	\$0
ROW	\$0	\$9,040	\$0	\$0	\$0	\$0	\$0	\$0	\$9,040
<b>Subtotal</b>	<b>\$0</b>	<b>\$9,495</b>	<b>\$0</b>	<b>\$4,196</b>	<b>\$0</b>	<b>\$0</b>	<b>\$0</b>	<b>\$0</b>	<b>\$13,691</b>
<b>Total</b>	<b>\$0</b>	<b>\$9,495</b>	<b>\$0</b>	<b>\$4,196</b>	<b>\$0</b>	<b>\$0</b>	<b>\$0</b>	<b>\$0</b>	<b>\$13,691</b>

### Furnace Avenue Bridge over Deep Run

<b>TIP ID</b>	11-1103-13	<b>Year of Operation</b>	2020
<b>Agency</b>	Anne Arundel County	<b>Project Type</b>	Bridge repair/deck replacement
<b>Project Category</b>	Highway Preservation	<b>Functional Class</b>	Minor Collector
<b>Conformity Status</b>	Exempt	<b>Physical Data</b>	2 to 2 lanes
<b>CIP or CTP ID(s)</b>	H535200	<b>Est. Total Cost</b>	\$1,613,000

**Description:**

Reconstruct existing bridge to correct existing deficiencies, substandard approach road and bridge deck geometry. Five foot shoulders planned on both sides of the road.

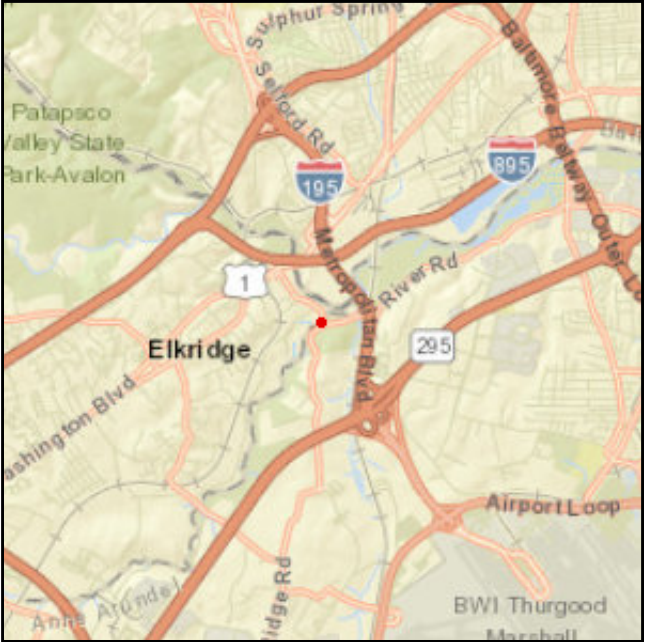
PE funding in FY 2014-2017 TIP.

**Justification:**

Correct bridge deficiencies.

**Connection to Long-Range Transportation Planning Goals:**

2.A Improve and Maintain the Existing Infrastructure -- Improve the condition of roadway systems (pavement, bridges, tunnels).





Furnace Avenue Bridge over Deep Run

(Funding in Thousands)

Surface Transportation Block Grant Program

Phase	FY 2019 Federal Funds	FY 2019 Matching Funds	FY 2020 Federal Funds	FY 2020 Matching Funds	FY 2021 Federal Funds	FY 2021 Matching Funds	FY 2022 Federal Funds	FY 2022 Matching Funds	Total Four-Year Funding Request
CON	\$920	\$303	\$0	\$0	\$0	\$0	\$0	\$0	\$1,223
OTH	\$0	\$0	\$0	\$0	\$0	\$0	\$0	\$0	\$0
PE	\$0	\$0	\$0	\$0	\$0	\$0	\$0	\$0	\$0
PP	\$0	\$0	\$0	\$0	\$0	\$0	\$0	\$0	\$0
ROW	\$0	\$0	\$0	\$0	\$0	\$0	\$0	\$0	\$0
<b>Subtotal</b>	<b>\$920</b>	<b>\$303</b>	<b>\$0</b>	<b>\$0</b>	<b>\$0</b>	<b>\$0</b>	<b>\$0</b>	<b>\$0</b>	<b>\$1,223</b>
<b>Total</b>	<b>\$920</b>	<b>\$303</b>	<b>\$0</b>	<b>\$0</b>	<b>\$0</b>	<b>\$0</b>	<b>\$0</b>	<b>\$0</b>	<b>\$1,223</b>

### Harwood Road Bridge over Stocketts Run

<b>TIP ID</b>	11-1208-13	<b>Year of Operation</b>	2021
<b>Agency</b>	Anne Arundel County	<b>Project Type</b>	Bridge repair/deck replacement
<b>Project Category</b>	Highway Preservation	<b>Functional Class</b>	Minor Collector
<b>Conformity Status</b>	Exempt	<b>Physical Data</b>	2 to 2 lanes
<b>CIP or CTP ID(s)</b>	H535100	<b>Est. Total Cost</b>	\$2,172,000

**Description:**

This project will replace the existing bridge over Stocketts Run. Three foot shoulders planned on both sides of the road.

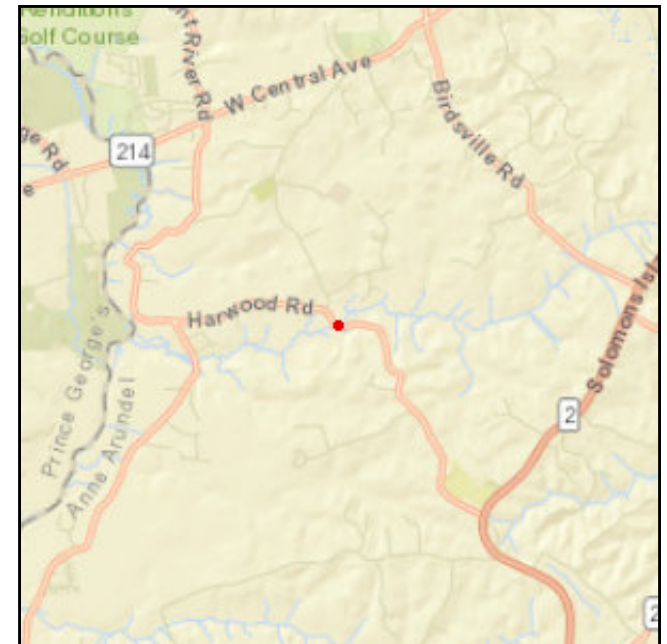
PE funding was included in FY 2014-2017 TIP.

**Justification:**

Correct bridge deficiencies, geometry and substandard approach. The bridge is functionally obsolete and load restricted.

**Connection to Long-Range Transportation Planning Goals:**

2.A Improve and Maintain the Existing Infrastructure -- Improve the condition of roadway systems (pavement, bridges, tunnels).





Harwood Road Bridge over Stocketts Run

(Funding in Thousands)

Surface Transportation Block Grant Program

Phase	FY 2019 Federal Funds	FY 2019 Matching Funds	FY 2020 Federal Funds	FY 2020 Matching Funds	FY 2021 Federal Funds	FY 2021 Matching Funds	FY 2022 Federal Funds	FY 2022 Matching Funds	Total Four-Year Funding Request
CON	\$0	\$0	\$1,274	\$529	\$0	\$0	\$0	\$0	\$1,803
OTH	\$0	\$4	\$0	\$94	\$0	\$0	\$0	\$0	\$98
PE	\$0	\$0	\$0	\$0	\$0	\$0	\$0	\$0	\$0
PP	\$0	\$0	\$0	\$0	\$0	\$0	\$0	\$0	\$0
ROW	\$0	\$76	\$0	\$0	\$0	\$0	\$0	\$0	\$76
<b>Subtotal</b>	<b>\$0</b>	<b>\$80</b>	<b>\$1,274</b>	<b>\$623</b>	<b>\$0</b>	<b>\$0</b>	<b>\$0</b>	<b>\$0</b>	<b>\$1,977</b>
<b>Total</b>	<b>\$0</b>	<b>\$80</b>	<b>\$1,274</b>	<b>\$623</b>	<b>\$0</b>	<b>\$0</b>	<b>\$0</b>	<b>\$0</b>	<b>\$1,977</b>

### Magothy Bridge Road Bridge over Magothy River

<b>TIP ID</b>	11-1402-13	<b>Year of Operation</b>	2020
<b>Agency</b>	Anne Arundel County	<b>Project Type</b>	Bridge repair/deck replacement
<b>Project Category</b>	Highway Preservation	<b>Functional Class</b>	Minor Arterial
<b>Conformity Status</b>	Exempt	<b>Physical Data</b>	2 to 2 lanes
<b>CIP or CTP ID(s)</b>	H534900	<b>Est. Total Cost</b>	\$3,656,000

**Description:**

Replace bridge deck and add shoulders to the bridge over the Magothy River. Five foot sidewalks and seven foot shoulders planned on both sides of the road.

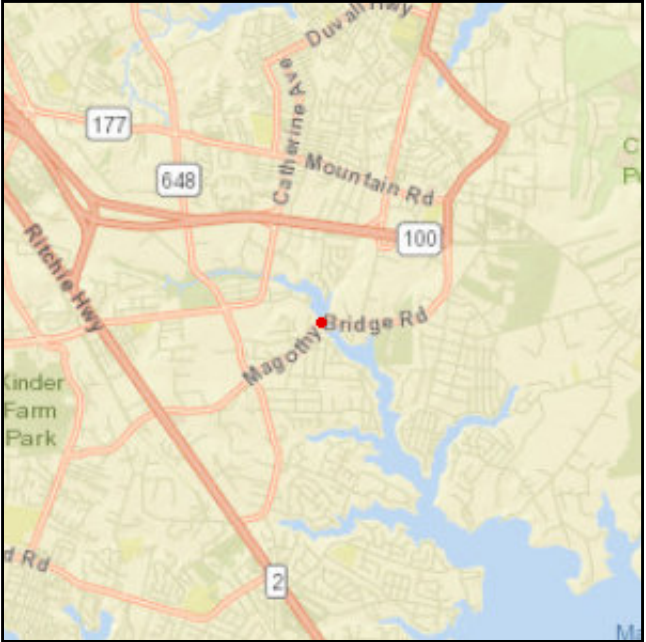
PE funding in a previous TIP.

**Justification:**

This bridge is functionally obsolete.

**Connection to Long-Range Transportation Planning Goals:**

2.A Improve and Maintain the Existing Infrastructure -- Improve the condition of roadway systems (pavement, bridges, tunnels).





Magothy Bridge Road Bridge over Magothy River

(Funding in Thousands)

Surface Transportation Block Grant Program

Phase	FY 2019 Federal Funds	FY 2019 Matching Funds	FY 2020 Federal Funds	FY 2020 Matching Funds	FY 2021 Federal Funds	FY 2021 Matching Funds	FY 2022 Federal Funds	FY 2022 Matching Funds	Total Four-Year Funding Request
CON	\$1,860	\$1,032	\$0	\$0	\$0	\$0	\$0	\$0	\$2,892
OTH	\$0	\$0	\$0	\$0	\$0	\$0	\$0	\$0	\$0
PE	\$0	\$0	\$0	\$0	\$0	\$0	\$0	\$0	\$0
PP	\$0	\$0	\$0	\$0	\$0	\$0	\$0	\$0	\$0
ROW	\$0	\$0	\$0	\$0	\$0	\$0	\$0	\$0	\$0
<b>Subtotal</b>	<b>\$1,860</b>	<b>\$1,032</b>	<b>\$0</b>	<b>\$0</b>	<b>\$0</b>	<b>\$0</b>	<b>\$0</b>	<b>\$0</b>	<b>\$2,892</b>
<b>Total</b>	<b>\$1,860</b>	<b>\$1,032</b>	<b>\$0</b>	<b>\$0</b>	<b>\$0</b>	<b>\$0</b>	<b>\$0</b>	<b>\$0</b>	<b>\$2,892</b>



### O'Connor Road Bridge over Deep Run

<b>TIP ID</b>	11-1403-13	<b>Year of Operation</b>	2020
<b>Agency</b>	Anne Arundel County	<b>Project Type</b>	Bridge repair/deck replacement
<b>Project Category</b>	Highway Preservation	<b>Functional Class</b>	Local
<b>Conformity Status</b>	Exempt	<b>Physical Data</b>	2 to 2 lanes
<b>CIP or CTP ID(s)</b>	H561000	<b>Est. Total Cost</b>	\$1,282,000

**Description:**

Replace bridge over Deep Run at O'Connor Road. Three foot shoulders planned on both sides of the road.

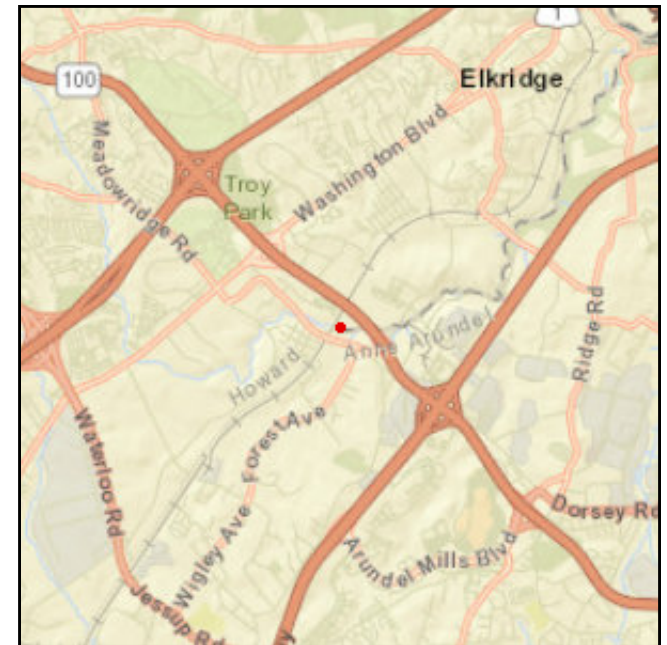
PE funding in the 2014-2017 TIP.

**Justification:**

Structurally deficient.

**Connection to Long-Range Transportation Planning Goals:**

2.A Improve and Maintain the Existing Infrastructure -- Improve the condition of roadway systems (pavement, bridges, tunnels).





O'Connor Road Bridge over Deep Run

(Funding in Thousands)

Surface Transportation Block Grant Program

Phase	FY 2019 Federal Funds	FY 2019 Matching Funds	FY 2020 Federal Funds	FY 2020 Matching Funds	FY 2021 Federal Funds	FY 2021 Matching Funds	FY 2022 Federal Funds	FY 2022 Matching Funds	Total Four-Year Funding Request
CON	\$601	\$499	\$0	\$0	\$0	\$0	\$0	\$0	\$1,100
OTH	\$0	\$0	\$0	\$0	\$0	\$0	\$0	\$0	\$0
PE	\$0	\$0	\$0	\$0	\$0	\$0	\$0	\$0	\$0
PP	\$0	\$0	\$0	\$0	\$0	\$0	\$0	\$0	\$0
ROW	\$0	\$0	\$0	\$0	\$0	\$0	\$0	\$0	\$0
<b>Subtotal</b>	<b>\$601</b>	<b>\$499</b>	<b>\$0</b>	<b>\$0</b>	<b>\$0</b>	<b>\$0</b>	<b>\$0</b>	<b>\$0</b>	<b>\$1,100</b>
<b>Total</b>	<b>\$601</b>	<b>\$499</b>	<b>\$0</b>	<b>\$0</b>	<b>\$0</b>	<b>\$0</b>	<b>\$0</b>	<b>\$0</b>	<b>\$1,100</b>

### McKendree Road Culvert over Lyons Creek

<b>TIP ID</b>	11-1601-19	<b>Year of Operation</b>	2023
<b>Agency</b>	Anne Arundel County	<b>Project Type</b>	Other
<b>Project Category</b>	Highway Preservation	<b>Functional Class</b>	Minor Collector
<b>Conformity Status</b>	Exempt	<b>Physical Data</b>	2 to 2 lanes
<b>CIP or CTP ID(s)</b>	H566801	<b>Est. Total Cost</b>	\$1,609,000

**Description:**

This project is to remove and replace the culvert on McKendree Road over Lyons Creek to correct the structurally deficient condition of the existing multicell culvert. Three foot shoulders planned on both sides of the road.

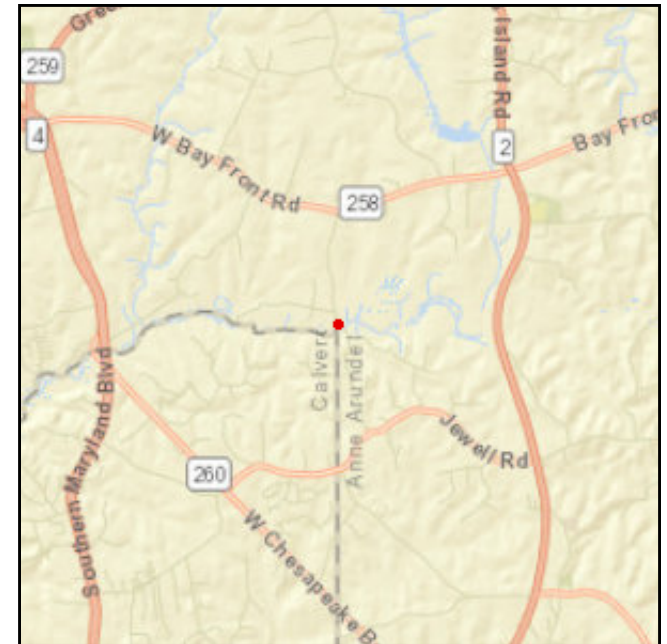
PE funding in the FY 2017 in the FY 2017-FY 2020 TIP.

**Justification:**

The existing culvert is structurally deficient.

**Connection to Long-Range Transportation Planning Goals:**

2.A Improve and Maintain the Existing Infrastructure -- Improve the condition of roadway systems (pavement, bridges, tunnels).





McKendree Road Culvert over Lyons Creek

(Funding in Thousands)

Surface Transportation Block Grant Program

Phase	FY 2019 Federal Funds	FY 2019 Matching Funds	FY 2020 Federal Funds	FY 2020 Matching Funds	FY 2021 Federal Funds	FY 2021 Matching Funds	FY 2022 Federal Funds	FY 2022 Matching Funds	Total Four-Year Funding Request
CON	\$0	\$0	\$0	\$0	\$0	\$0	\$709	\$329	\$1,038
OTH	\$0	\$0	\$0	\$0	\$0	\$0	\$0	\$0	\$0
PE	\$0	\$0	\$0	\$0	\$0	\$0	\$0	\$0	\$0
PP	\$0	\$0	\$0	\$0	\$0	\$0	\$0	\$0	\$0
ROW	\$0	\$0	\$0	\$0	\$0	\$0	\$0	\$0	\$0
<b>Subtotal</b>	<b>\$0</b>	<b>\$0</b>	<b>\$0</b>	<b>\$0</b>	<b>\$0</b>	<b>\$0</b>	<b>\$709</b>	<b>\$329</b>	<b>\$1,038</b>
<b>Total</b>	<b>\$0</b>	<b>\$0</b>	<b>\$0</b>	<b>\$0</b>	<b>\$0</b>	<b>\$0</b>	<b>\$709</b>	<b>\$329</b>	<b>\$1,038</b>

### Polling House Road Bridge over Rock Branch

<b>TIP ID</b>	11-1602-13	<b>Year of Operation</b>	2022
<b>Agency</b>	Anne Arundel County	<b>Project Type</b>	Bridge repair/deck replacement
<b>Project Category</b>	Highway Preservation	<b>Functional Class</b>	Minor Collector
<b>Conformity Status</b>	Exempt	<b>Physical Data</b>	2 to 2 lanes
<b>CIP or CTP ID(s)</b>	H561100	<b>Est. Total Cost</b>	\$1,457,000

**Description:**

This project will replace the existing bridge along Polling House Road over Rock Branch to correct the deteriorated structure and obsolete deck geometry. Three foot shoulders planned on both sides of the road.

**Justification:**

Correct deteriorated structure and obsolete deck geometry.

**Connection to Long-Range Transportation Planning Goals:**

2.A Improve and Maintain the Existing Infrastructure -- Improve the condition of roadway systems (pavement, bridges, tunnels).





Polling House Road Bridge over Rock Branch

(Funding in Thousands)

Surface Transportation Block Grant Program

Phase	FY 2019 Federal Funds	FY 2019 Matching Funds	FY 2020 Federal Funds	FY 2020 Matching Funds	FY 2021 Federal Funds	FY 2021 Matching Funds	FY 2022 Federal Funds	FY 2022 Matching Funds	Total Four-Year Funding Request
CON	\$0	\$0	\$0	\$0	\$833	\$345	\$0	\$0	\$1,178
OTH	\$0	\$0	\$0	\$0	\$0	\$0	\$0	\$0	\$0
PE	\$0	\$0	\$225	\$54	\$0	\$0	\$0	\$0	\$279
PP	\$0	\$0	\$0	\$0	\$0	\$0	\$0	\$0	\$0
ROW	\$0	\$0	\$0	\$0	\$0	\$0	\$0	\$0	\$0
<b>Subtotal</b>	<b>\$0</b>	<b>\$0</b>	<b>\$225</b>	<b>\$54</b>	<b>\$833</b>	<b>\$345</b>	<b>\$0</b>	<b>\$0</b>	<b>\$1,457</b>
<b>Total</b>	<b>\$0</b>	<b>\$0</b>	<b>\$225</b>	<b>\$54</b>	<b>\$833</b>	<b>\$345</b>	<b>\$0</b>	<b>\$0</b>	<b>\$1,457</b>

### Mountain Road Corridor Revitalization - Phase I

<b>TIP ID</b>	11-1802-19	<b>Year of Operation</b>	2022
<b>Agency</b>	Anne Arundel County	<b>Project Type</b>	Other
<b>Project Category</b>	Highway Preservation	<b>Functional Class</b>	Other Principal Arterial
<b>Conformity Status</b>	Exempt	<b>Physical Data</b>	0.81 miles
<b>CIP or CTP ID(s)</b>	H569400	<b>Est. Total Cost</b>	\$22,838,000

**Description:**

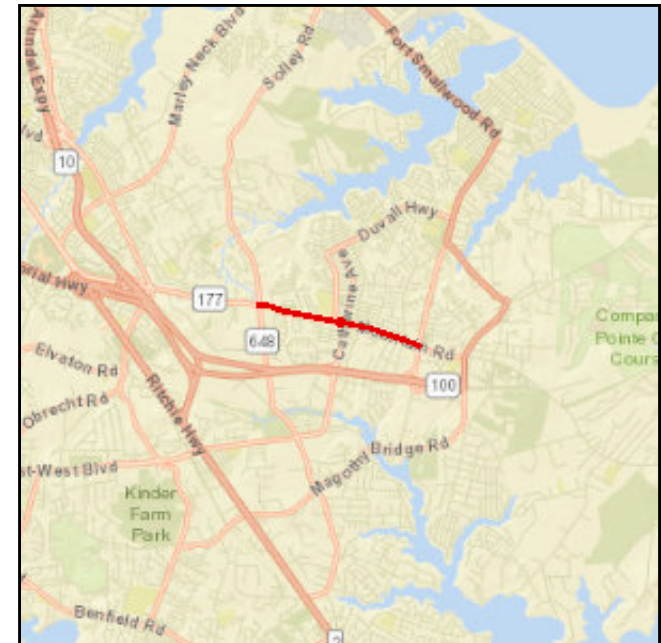
This project will provide improved vehicular, bicycle, and pedestrian facilities and enhancements along the MD 177 (Mountain Road) corridor between Solley Road and Edwin Raynor Boulevard. No additional through lanes are being added.

Funding for Phase I, Catherine Avenue to Edwin Raynor Boulevard, has been provided. PE for Phase I was programmed in FY 2017.

Design, right-of-way acquisition, and construction for other phases may be funded in a future budget.

**Justification:**

The Mountain Road Commercial Corridor Study was conducted to determine traffic operations and safety improvements for all travel modes as well as to improve access and increase mobility options for pedestrians and cyclists along Mountain Road (MD 177) in Pasadena, Maryland. Recommendations were also developed to improve the aesthetics and functionality of the commercial corridor. An urban design framework was created with potential strategies to create distinctive, identifiable places along Mountain Road that could enhance the use of the corridor for all users.



**Connection to Long-Range Transportation Planning Goals:**

- 1.C Improve System Safety -- Eliminate hazardous or substandard conditions.
- 2.A Improve and Maintain the Existing Infrastructure -- Improve the condition of roadway systems (pavement, bridges, tunnels).
- 2.F Improve and Maintain the Existing Infrastructure -- Improve the condition of pedestrian and bicycle facilities.



Mountain Road Corridor Revitalization - Phase I

(Funding in Thousands)

Other

Phase	FY 2019 Federal Funds	FY 2019 Matching Funds	FY 2020 Federal Funds	FY 2020 Matching Funds	FY 2021 Federal Funds	FY 2021 Matching Funds	FY 2022 Federal Funds	FY 2022 Matching Funds	Total Four-Year Funding Request
CON	\$0	\$0	\$0	\$0	\$0	\$15,788	\$0	\$0	\$15,788
OTH	\$0	\$0	\$0	\$177	\$0	\$790	\$0	\$0	\$967
PE	\$0	\$0	\$0	\$0	\$0	\$0	\$0	\$0	\$0
PP	\$0	\$0	\$0	\$0	\$0	\$0	\$0	\$0	\$0
ROW	\$0	\$0	\$0	\$3,525	\$0	\$0	\$0	\$0	\$3,525
<b>Subtotal</b>	<b>\$0</b>	<b>\$0</b>	<b>\$0</b>	<b>\$3,702</b>	<b>\$0</b>	<b>\$16,578</b>	<b>\$0</b>	<b>\$0</b>	<b>\$20,280</b>
<b>Total</b>	<b>\$0</b>	<b>\$0</b>	<b>\$0</b>	<b>\$3,702</b>	<b>\$0</b>	<b>\$16,578</b>	<b>\$0</b>	<b>\$0</b>	<b>\$20,280</b>