

A Publication of the Baltimore Regional Transportation Board, the Metropolitan Planning Organization for the Baltimore Region

## Give Clean Commuting A Try This Summer



Ah, May! It's the time when the days become noticeably longer and flowers bloom. It's also the month when both temperatures and pollution levels begin to rise throughout the Baltimore region. A lot of that pollution—as much as one third—comes from tail-pipe emissions. That's why May is Clean Commute Month, a time for all of us to start to consider how our transportation choices affect everyone else.

The Baltimore Metropolitan Council and the Clean Commute Partnership asked people in our region to explore their transportation options and try at least one alternative to driving alone this summer. Clean Commute options include riding transit, biking, teleworking, and carpooling.

In order to get the Clean Commute message out, BMC staff

*continued on page 2*

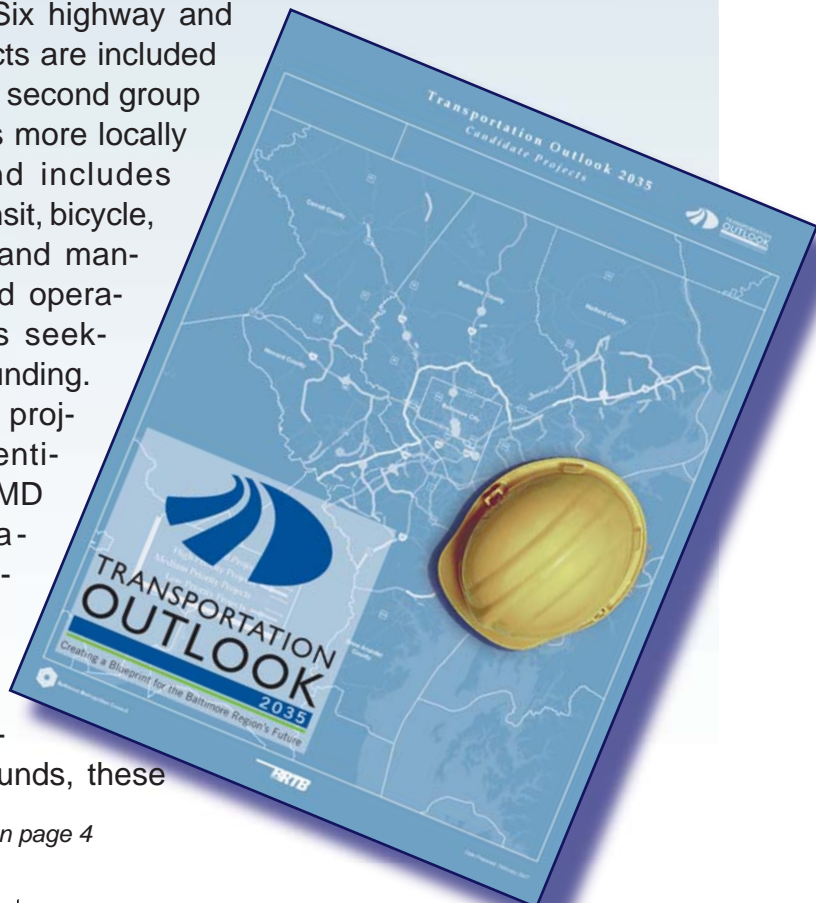
## A Blueprint for the Region's Future

After months of planning and analysis, the BRTB has released a draft plan for Transportation Outlook 2035—the next long-range transportation plan for the Baltimore region. This draft includes over 80 transportation projects worth over \$8 billion dollars.

The process for compiling the plan involved a series of steps, including the development of some guiding goals, an analysis of available funding over the next 25 to 30 years, and an exploration of the expected socio-economic changes the region will experience. Additionally, all of the local jurisdictions in the region worked with the MD Departments of Transportation, Planning, and the Environment to come up with a list of projects to be included in the draft plan.

The first group of projects has been identified as “Regionally Significant” or of critical importance to all jurisdictions in the region. Six highway and transit projects are included on this list. A second group of projects is more locally oriented and includes highway, transit, bicycle, pedestrian, and management and operation projects seeking federal funding. Additionally, projects are identified by the MD Transportation Authority (MdTA). Although MdTA is not requesting federal funds, these

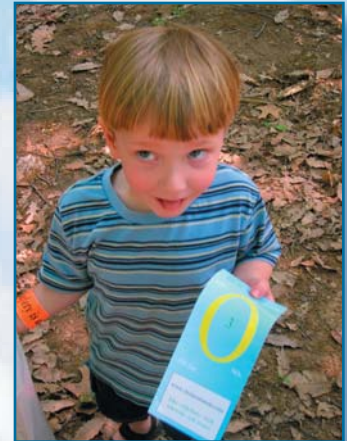
*continued on page 4*



# CLEAN COMMUTING IS CATCHING!

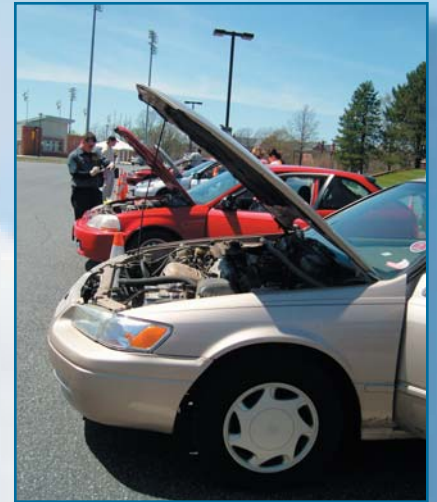
*continued from page 1*

participated in outreach events throughout the region, including (right) a youngster learns about clean air at the Carroll County Herb Festival, and (below, clockwise starting at top left) NCR Trail Outreach; the Towsontown Spring Festival; the Clean Cars for Clean Air Kickoff Event at Unitas Stadium in Towson; additional Clean Car Clinics throughout the region; Bike to Work Day in Towson (pictured) Bel Air, Baltimore City and Annapolis; Outreach at Piney Run Park Herb Festival in Carroll County. In addition, staff hosted a thank-you to regular riders of mass transportation at the BWI Rail Station, and conducted outreach at the Baltimore Flower Mart, and the Baltimore Ecofest.



To learn more about Clean Commuting or to find out about upcoming events, visit [www.cleancommute.com](http://www.cleancommute.com) or contact Russ Ulrich at [rulrich@baltometro.org](mailto:rulrich@baltometro.org).

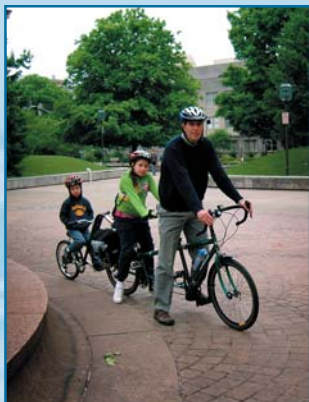
We hope you'll protect both your health and our air this season, so we're asking you to do something positive on your way to work--Clean Commute! Can't carpool, bike or use transit? There are lots of simple ways you can clean up your commute. This year's events included everything from Car Care Clinics to Commuter Thank-You celebrations.



(Left to Right) A visitor to the Carroll County Herb Festival shows off a clean air T-shirt she received at the Clean Commute Booth; Commuters enjoyed a warm greeting and tasty breakfast at the BWI MARC Station as part of the 2007 Commuter Thank You event; Cars await inspection at a Clean Cars for Clean Air Clinic.



(Left to Right) BMC Executive Director Larry Klimovitz and County Executive David Craig were on hand for the unveiling of Harford County's Clean Commute Bus Ad Campaign; BMC staffers Eileen Singleton and Russ Ulrich share tips for Clean Commuting with a visitor to the Towsontown Spring Festival.



(Left to Right) Cyclists of all ages participated in Bike to Work Day Rallies and events.

# Transportation Outlook 2035: Creating a

*continued from page 1*

projects are included for consideration in the regional travel model and for air quality analyses. A map of the projects in the draft plan is included on page 4.

## Selecting Transportation Project Priorities

As part of the planning process, the BRTB evaluated and ranked most of the projects submitted for consideration. The process, called prioritization, assisted the BRTB in evaluating a wide range of individual transportation projects to see which projects are best suited for the plan, given the limited amount of money available.

## How does the prioritization process work?

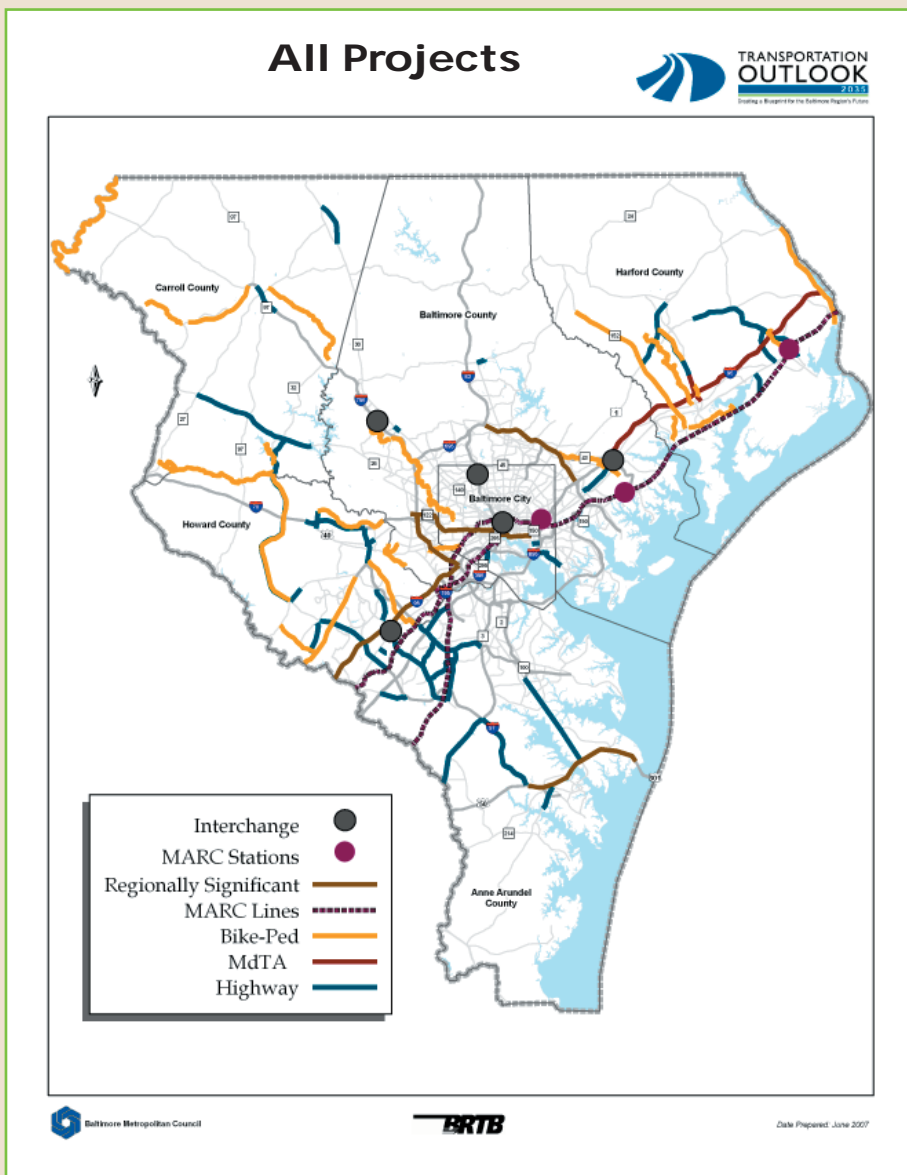
Projects are evaluated based on their policy and technical merits. Most projects submitted for consideration in the long-range plan go through the prioritization process, although projects deemed to be “Regionally Significant” do not. Regionally Significant projects are, however, evaluated based on a separate set of criteria and technical information is collected for modeling and air quality purposes.

The policy evaluation strongly follows the priorities of the local jurisdictions. In addition, projects are reviewed to determine consistency with Priority Funding Areas established by the Maryland Department of Planning. This policy evaluation accounts for 60 percent of the project score.

The technical analysis takes into account information such as how congested a particular road is, the number of crashes on a road, or the number of potential users for a bus or train. This technical information accounts for 40 percent of the project score and includes an analysis of the following criteria:

- Safety
- Accessibility
- Cost Effectiveness
- Connectivity
- Demand
- Congestion

For further information on these results or methodologies, visit [www.baltometro.org](http://www.baltometro.org).



# Blueprint for the Baltimore Region's Future

*continued from page 1*

## Join us at a PUBLIC MEETING!

Transportation Outlook 2035 is a long-range transportation plan for the Baltimore region. It serves as a comprehensive blueprint for the Baltimore area by identifying the ways the region plans to invest in the transportation system over the next few decades.

### Public review

The draft plan for Transportation Outlook 2035 is now open for public review and comment. A comment period will be held from July 2 through August 29, 2007. The BRTB encourages the public to review the draft plan and submit comments.

### LEARN MORE AT A PUBLIC MEETING

Attend one of these public meetings to learn more and share your thoughts:

- **Tuesday, July 24 , 2007**  
5-8 p.m. Presentation at 7 p.m.  
George Howard Building, Tyson Rooms  
3430 Courthouse Drive, Ellicott City
- **Wednesday, July 25 , 2007**  
4-8 p.m. Presentations at 5 and 7 p.m.  
Heritage Office Complex  
2nd Fl, Chesapeake Room  
2664 Riva Road, Annapolis
- **Tuesday, July 31, 2007**  
3 to 8 p.m. Presentations at 4 and 6 p.m.  
Harford County Administration Building  
220 South Main St.  
2nd floor conf room, Bel Air
- **Wednesday, August 1, 2007**  
3 to 8 p.m. Presentation at 7 p.m.  
County Office Building  
225 N. Center Street, Public Hearing Room  
(Room 003/004), Westminster
- **Monday, August 6, 2007**  
4 to 8 p.m. Presentation at 7 p.m.  
Baltimore County Public Library  
320 York Road, Towson
- **Wednesday, August 15, 2007**  
5 to 8:30 p.m. Presentation at 7 p.m.  
Charles L. Benton Bldg., Room 346  
417 E. Fayette Street, Baltimore
- **Tuesday, August 21, 2007**  
3 to 7 p.m. Presentations 4 and 6 p.m.  
Baltimore Metropolitan Council  
2700 Lighthouse Point East, Suite 310  
Baltimore

Public comments are also welcome to be presented to area elected officials at the BRTB meeting.

### **Tuesday, August 28, 2007 at 5 p.m.**

Baltimore Metropolitan Council  
2700 Lighthouse Point East  
Suite 310  
Baltimore

Additional copies of this draft plan are available at public libraries throughout the region, as well as planning offices in each jurisdiction. Visit [www.baltometro.org](http://www.baltometro.org) for an up-to-date calendar of Transportation Outlook 2035 public meetings and events.

### LET US KNOW WHAT YOU THINK!

Comments may be submitted online at [www.baltometro.org/bboard](http://www.baltometro.org/bboard) or in writing to The Baltimore Regional Transportation Board, 2700 Lighthouse Point East, Suite 310, Baltimore, MD 21224, by fax to 410-732-8248, or by e-mail to [mhaines@baltometro.org](mailto:mhaines@baltometro.org). All comments must be received by 4:30 p.m. on Wednesday, August 29, 2007.

# Socio-economic Projections Show S

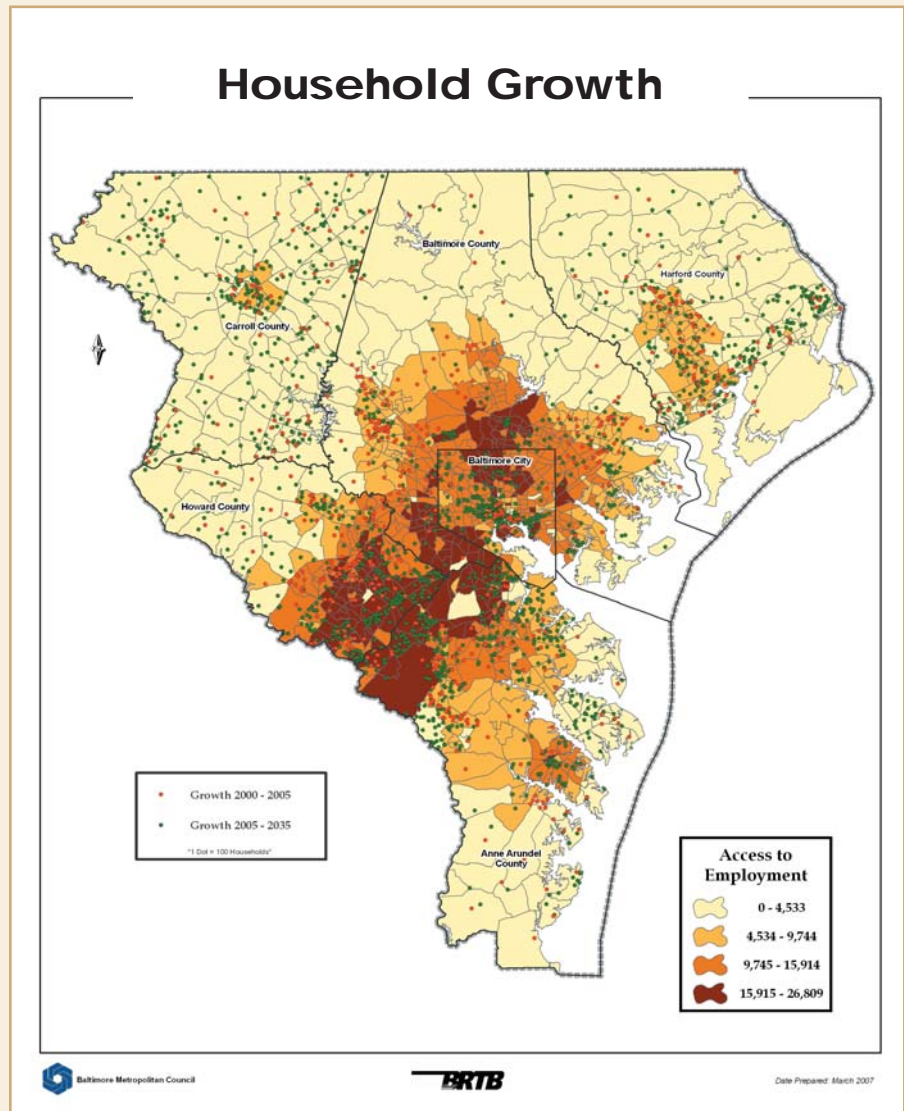
## BRTB Endorses Round 7 Socio-economic Projections for next 30 Years

Earlier in 2007, the BRTB officially endorsed regional and small area forecasts for the years 2000 to 2035. These forecasts, entitled Round 7, project future changes in population, households, employment, and labor force. Round 7 data will be used in the development of *Transportation Outlook 2035* as well as other planning activities. It is the first set of data in the region to go out to the year 2035.

The following is a summary of anticipated socio-economic changes for the Baltimore region for the years 2000-2035.

### Population

Round 7 data indicates that population will grow by approximately 433,000 - reaching a total of nearly 3 million in 2035 (an increase



continued on page 7

## Summary of Round 7 Baltimore Region Socio-economic Characteristics

Characteristic	2000	2035	2000-2035	
			Change	%Change
Population	2,515,289	2,958,500	443,211	18%
Households	959,661	1,200,900	241,239	25%
Employment	1,534,400	1,986,000	451,600	29%

# Strong Growth in Jobs, Population

continued from page 5

of 18%). Carroll County is projected to have the highest percentage population growth within the region at 55%, while Baltimore City is expected to experience the lowest growth at 5%.

## Households

Households are estimated to experience higher growth than population, reaching 1.2 million in 2035. This is an increase of 25% or 241,239 households.

Carroll County is projected to have the highest percentage household growth within the region at 70%, while Baltimore County is expected to experience the lowest growth at only 11%.

Regionally, household size is expected to decrease from 2.53 people per household in 2000 to about 2.38 in 2035.

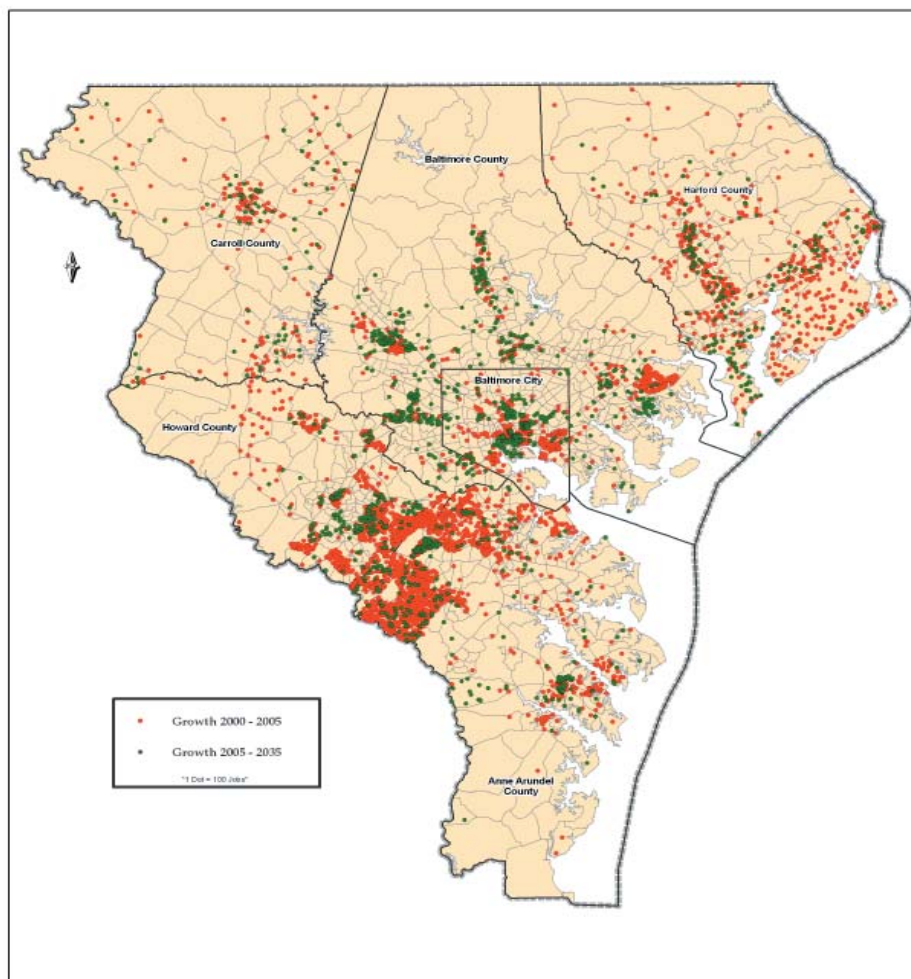
## Employment

The region can expect growth of 29% (an increase of 451,600 jobs), totaling nearly 2 million jobs in 2035.

Anne Arundel County will by far add the greatest number of jobs –157,000 (53% increase), while Harford County is projected to experience the highest percentage of growth in employment - growing by 72% with 69,000 new jobs. These significant increases are largely a result of the federal Base Realignment and Closure (BRAC) program and other federal government redevelopment.

Howard County will also see a large increase in the number of jobs – adding 100,000 new jobs for a 65% increase. Baltimore City is anticipated to have the lowest percentage of growth in the region with only 21,800 jobs, for a 5% increase.

## Total Employment Growth



Baltimore Metropolitan Council

BRTB

Date Prepared: March 2007



## New Transit E-Newsletter Now Available

Our newest e-newsletter, *On Transit*, provides subscribers with periodic updates of important transit information from around the region, state, and nation.

Recent issues highlighted a variety of articles, including:

- A transit funding report for Maryland
- Regional Coordinated Transportation Forum
- Upcoming service changes for Howard Transit
- Public meeting announcement about potential changes to Cecil County transit services.
- Anne Arundel County's "Commuting Made Easy" program
- A national report on the cost savings associated with using public transit

Visit [www.baltometro.org](http://www.baltometro.org) to read the latest issue or to join the *On Transit* e-news mailing list.

# Baltimore Washington Household Travel Survey

The Baltimore Metropolitan Council has teamed with the Metropolitan Washington Council of Governments to conduct a household travel survey in both the Baltimore and Washington regions. The Baltimore region portion, begun in April, will assess the travel behaviors of 4,500 randomly-selected area households.

Data collected in the 2007 Household Travel Survey will assist staff in identifying how, where, when, and why people in the region travel. This information can then be used to support important transportation decisions including improving area transit, roads, and pedestrian and bicycle facilities.

Households agreeing to participate will complete a short telephone interview and record the travel of each household member for a specified 24-hour period. Interviews will be conducted in both English and Spanish.

Any and all travel will be recorded, including everyday travel such as going to and from work or school, picking up groceries for dinner, going out to eat at lunch, stopping to buy a cup of coffee or just taking a walk to a neighborhood park.

Participants will also be asked about personal activities – such as online shopping or telephone banking – that replaces trips residents would otherwise need to make. In addition, some households have been asked to put a Global Positioning System (GPS) logger in their household vehicles to collect additional travel related data.

All data collected in the Household Travel Survey will be used to analyze changes in daily travel behavior and validate the regional travel demand forecasting model. A preliminary report will be completed by the end of summer 2008. For more information, visit [www.baltometro.org](http://www.baltometro.org).



# Truck Parking Partnership Study

Each year, the Freight Movement Task Force, an advisory group of the BRTB, studies important freight issues in the region. This year's study examined the accessibility of safe and convenient parking for truck drivers.

The U.S. Department of Transportation estimates that the growth in goods movement will continue at an increasing rate. Moderate economic growth will double the volume of import-export tonnage and increase domestic freight tonnage by seventy percent over the next twenty years.

Trucks fulfill a sizeable portion of the demand for goods movement in Maryland. The Maryland Motor Truck Association reports that trucks move 87% of the manufactured freight moving in and out of Maryland and over 90% of all Maryland communities depend exclusively on trucks for freight service.

## ***Evaluating the problem***

Federal regulations require that truckers rest after 11 hours of

driving. However, with the growth in truck traffic, the amount of safe truck parking spaces is growing slim.

On an average weeknight, there is a demand for approximately 3,500 parking spaces in Maryland. This is 1,000 spaces above the current inventory. This lack of parking spaces often leads to illegal parking on highway ramps or road shoulders. This presents a serious safety hazard for both truckers and other drivers.

To evaluate the level of demand in the Baltimore region, the FMTF Study focused on the truck parking situation at two locations: I-95 at Jessup and I-83 at Hunt Valley. For each location, data such as the number of available truck parking spaces and number of trucks parked on nearby ramps, shoulders, and parking lots was collected.

In addition, stakeholder forums were held in Hunt Valley and in Jessup to both raise awareness of the truck parking shortage and

to jointly identify solutions to the problem. Finally, the study also identified potential alternative parking locations such as retail, transit, or commuter parking lots.

The fusion of this information resulted in 16 recommended strategies.

## ***Identifying solutions***

A key recommendation of the study was to create a public-private partnership. Consideration has been given to an ad hoc Truck Parking Work Group to review and implement strategies, as well as evaluate new opportunities or solutions. Additionally, the group would work to engage key stakeholders in the private sector, as well as in government. Ultimately, the goal of the ad hoc group would be to increase safety in the region by providing safe parking spaces. Initial planning for this group is underway.

For more information, contact Karin Foster at [kfoster@baltometro.org](mailto:kfoster@baltometro.org) or 410-732-0500 x1049.





# More Than 150 Gather to Address Issues at Regional Traffic Signal Forum

On Wednesday, March 14, 2007 over 150 signal engineers, technicians, planners, and consultants from the DC-MD-VA region gathered at the Maritime Institute in Linthicum, Maryland for the 2007 Baltimore-Washington Regional Traffic Signal Operations Forum.

The forum, co-organized by the Traffic Signal Subcommittees of the Baltimore and Washington regions, was sponsored by the Federal Highway Administration as part of their ongoing efforts to highlight the importance of signal operations in tackling congestion.

The two Traffic Signal Subcommittee Chairs Diane Schwarzman and Doug Hansen kicked off the forum with opening remarks. Following this, representatives from the State Highway Administration and the Washington, DC and Virginia Departments of Transportation provided updates on major sig-

nal operations activities in their jurisdictions.

The keynote address was delivered by Regina McElroy, Director of the Office of Transportation Operations at the Federal Highway Administration. Ms. McElroy talked about the U.S. Department of Transportation Congestion Initiative and highlighted six key features that include relieving urban congestion and promoting operational and technological improvements under which traffic signal timing is a key element.

The program also included nine breakout sessions on topics ranging from signal timing, pedestrian accessibility, new technologies, system integration and maintenance, regional collaboration, and other issues and challenges faced by state and local operators. Full program details, speaker bios, and presentations are available at [www.baltometro.org](http://www.baltometro.org).



*Mr. Philip Strong of the American Council for the Blind presents information on Accessible Pedestrian Signals*

The forum also attracted a number of sponsors and exhibitors. The sponsors included:

- Gold: Sabra, Wang & Associates and Energy Systems Group
- Silver: RK&K
- Bronze: Greenhorne & O'Mara and Kittleson & Associates

The exhibitors included Econolite, J.O. Herbert Co., Inc, Dialight, Control Technologies, RGA, Inc., Sensys Networks, and Traffic & Systems Technology.

The Baltimore Traffic Signal Subcommittee hopes to conduct these forums on an ongoing basis to continue to dialogue on signal operations throughout the region. For additional information, please contact Bala Akundi at 410-732-0500 x 1019 or [baakundi@baltometro.org](mailto:baakundi@baltometro.org).



*Opening Session Speakers - Soumya Dey (DDOT), Regina McElroy (FHWA), Tom Hicks (MSHA), Raymond Khoury (VDOT)*

# BRTB Highlights

Recent BRTB meetings addressed the following topics.

- Amendment to BRTB Bylaws - The BRTB approved Resolution #07-22, in support of the proposed amendment to the BRTB Bylaws reducing the number of required meetings held per year with local elected officials from four to at least one.
- Mobile Source Emissions Budgets – The BRTB approved mobile budgets for the 8-hour ozone State Implementation Plan. These budgets address two pollutants: volatile organic compounds and nitrogen oxides.
- Job Access & Reverse Commute Applicants – The BRTB reviewed and approved requests for 7 transportation services designed to transport welfare recipients and eligible low-income individuals to and from jobs and employment-related activities.
- Transit Security Initiatives - The MTA provided an overview of security initiatives that have been funded by the Department of Homeland Security. Different programs were discussed as well as participation in the Regional Transit Security Work Group.
- External Travel Survey – The BRTB discussed a hybrid approach for collecting data at the external stations of the Baltimore region. The approach includes traditional surveys at 4 locations, household travel surveys of 1,450 households, collecting data from a subset of households via GPS, and license plate matching studies in 3 locations to determine the number of external trips on these facilities.
- Transportation Enhancement Program Applicants - The BRTB reviewed and approved requests for 6 projects that are included in eligible federal categories and have been screened for regional criteria developed by the BRTB.
- FY 2008 Unified Planning Work Program – The BRTB approved the July 2007 – June 2008 work program, developed in coordination with regional partners and published for public review.
- Final Metropolitan (and Statewide) Planning Regulations – The BRTB was briefed on the final regulations that became effective on March 16, 2007. The regulations closely mirror language in SAFETEA-LU.

## FY 2008 TIP

On April 27, the BRTB released a list of projects submitted for the FY 2008-2012 Transportation Improvement Program. The TIP is a list of transportation priorities and projects that are requesting federal funding over the next 5 years. This list includes projects such as bridge repair, road resurfacing or widening, bicycle lanes, pedestrian pathways or trails, streetscaping, and transit projects.

The full list of proposed projects can be viewed in our online database at: [bmc.baltometro.org/tips\\_web](http://bmc.baltometro.org/tips_web). This database also lists all project information from the past several TIPs. More information about the TIP and directions on how to use the database is available on the BMC web site.

The BRTB will release the final draft TIP for public review in July. Visit [www.baltometro.org](http://www.baltometro.org) for more information.

For questions about the TIP, contact Tyson Byrne at [tbyrne@baltometro.org](mailto:tbyrne@baltometro.org) or 410-732-0500 x1048.

## WHAT'S GOING ON?

### JULY

Technical Committee	7/10	9:30 A.M.
Interagency Consultation Group	7/11	8:30 A.M.
Bicycle & Pedestrian Advisory Group	7/11	1:00 P.M.
Citizens Advisory Committee	7/11	5:30 P.M.
Cooperative Forecasting Group	7/18	10 A.M.

**Stay  
up-to-date**

**Sign up for B'More  
Involved or one of our  
other e-newsletters**

**Sign up now at  
[www.baltometro.org](http://www.baltometro.org)**



Baltimore Metropolitan Council  
 2700 Lighthouse Point East  
 Suite 310  
 Baltimore, MD 21224-4774  
 Editor: Monica Haines  
 Design: Lillian Bunton

**Let's Hear From You!**  
 Send your comments to  
 brtbnoteseditor@baltometro.org  
 or call 410-732-0500, x1047.

**We're on the Web! Visit [www.baltometro.org](http://www.baltometro.org)**

Funding for this newsletter is provided in part by member jurisdictions, grants from the US Department of Transportation and the Maryland Department of Transportation.

## Baltimore Regional Transportation Board

Member	Empowered Representative	Representative's Phone Number
Hon. Ellen O. Moyer, City of Annapolis .....	Jon Arason	410-263-7961
Hon. John R. Leopold, Anne Arundel County.....	Harvey Gold	410-222-7434
Hon. Sheila Dixon, City of Baltimore .....	Jamie Kendrick	410-396-3835
Hon. James T. Smith, Baltimore County .....	Emery Hines	410-887-3554
Hon. Dean L. Minnich, Carroll County, Vice Chair .....	Frank Johnson	410-386-2145
Hon. David R. Craig, Harford County .....	Tony McClune	410-638-3103
Hon. Ken Ulman, Howard County, Chair .....	Carl Balser	410-313-4310
Hon. Shari T. Wilson, Secretary, MD Dept. of Environment .....	Tad Aburn	410-537-3255
Hon. John D. Porcari, Secretary, MD Dept. of Transportation ..	Samuel F. Minnitte	410-865-1275
Hon. Richard E. Hall, Secretary, MD Dept. of Planning .....	David Whitaker	410-767-4564

### in this issue . . .

- A Blueprint for the Region's Future..... 1
- Give Clean Commuting a Try This Summer..... 1
- Looking to the Future: BRTB Endorses Round 7 Data Projections ..... 6
- New Transit E-newsletter Now Available ..... 8
- Baltimore Washington Household Survey ..... 8
- Truck Parking Study..... 9
- 150 Gather to Address Congestion ..... 10
- BRTB Highlights ..... 11
- FY 08-12 TIP ..... 11