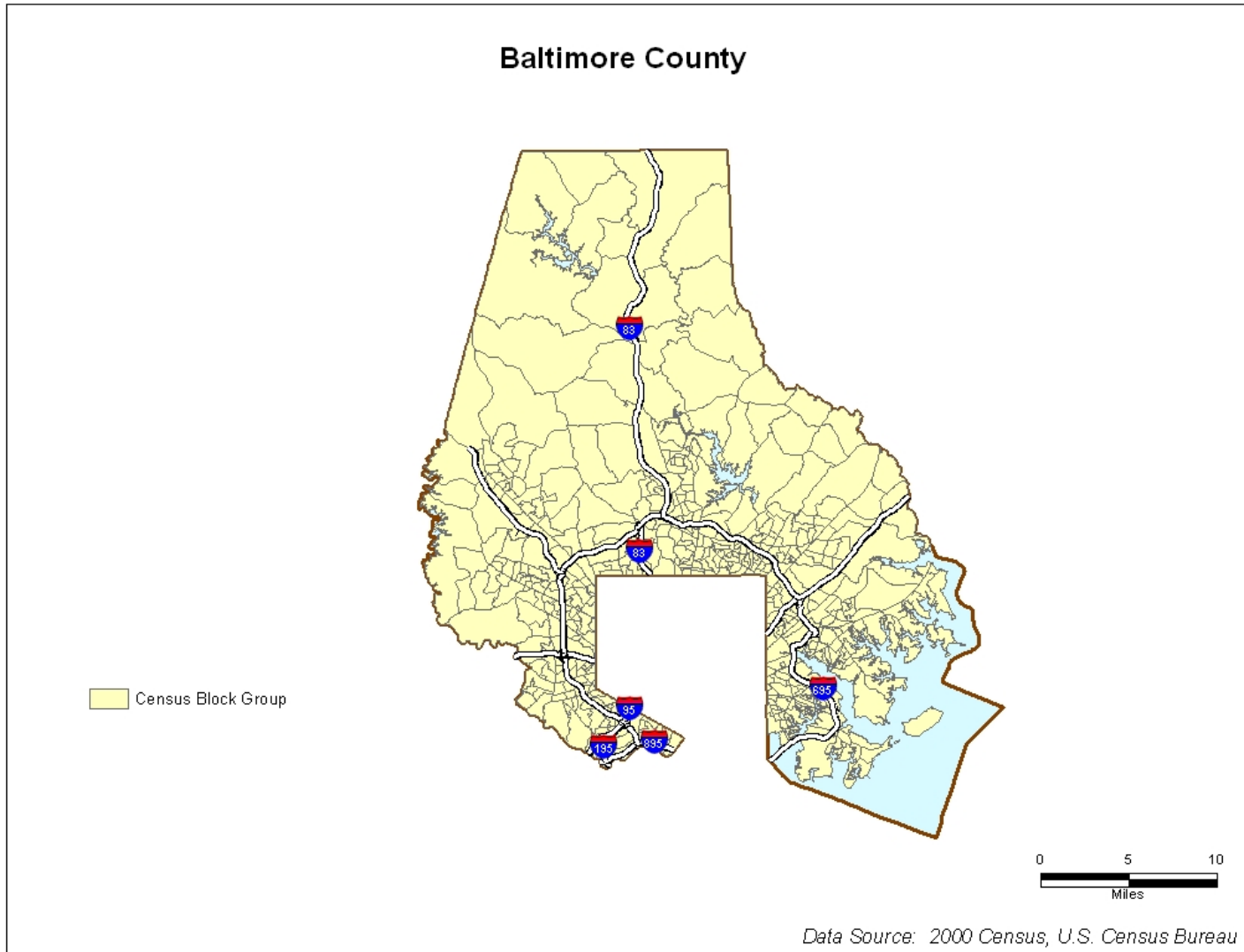


Baltimore County



Dogwood Road Bridge Over Bens Run

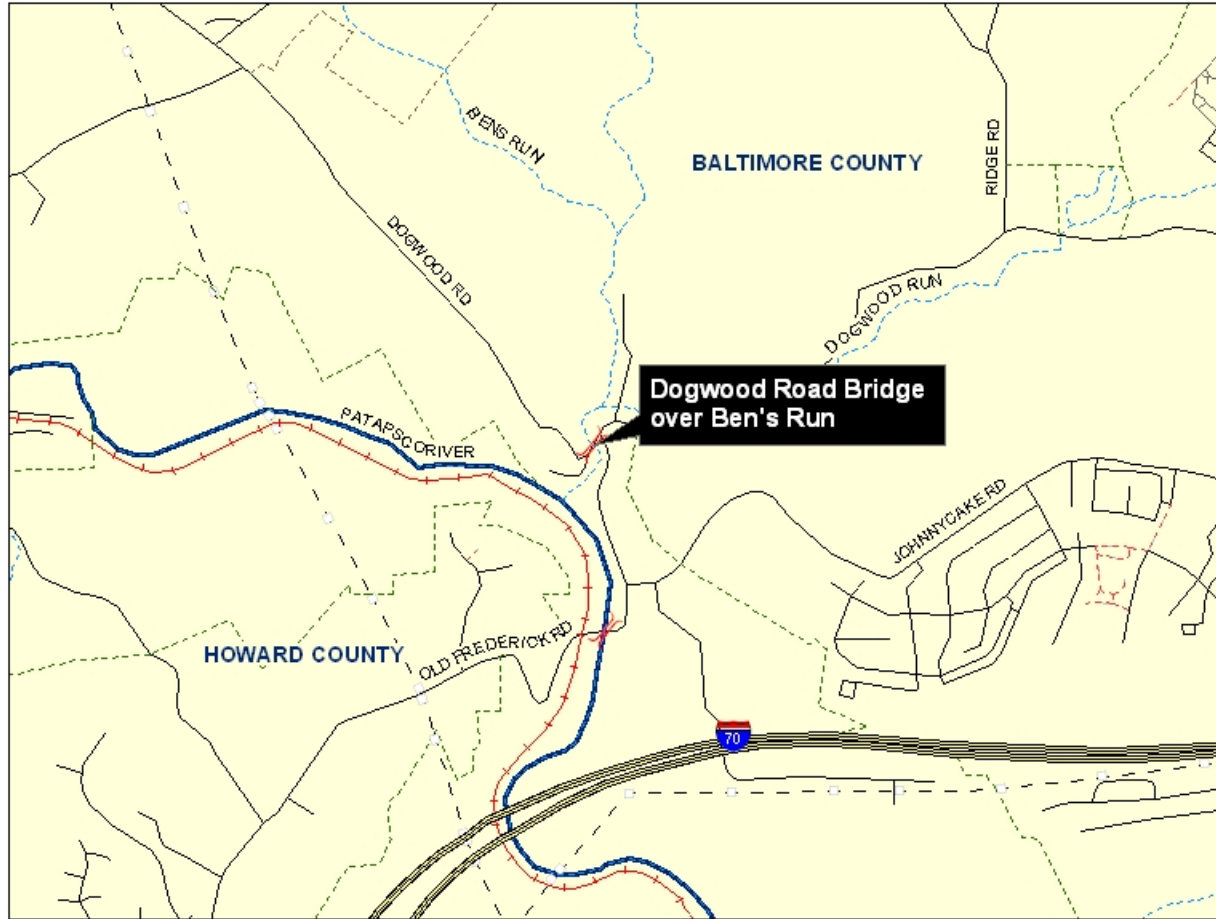
TIP Id #	13-0001-13	Year of Operation	2011
Agency	Local Project	Project Type	Bridge repair/deck replacement
Project Category	Highway Preservation	Functional Class	NA
Conformity Status	Exempt	Physical Data	2 /2 Lanes
CIP/CTP Page#	NA		

Description	Justification
Replacement of existing bridge.	The National Bridge Inspection Program recommends replacement due to extensive concrete contamination. This project is consistent with federal, state, and local bridge replacement policies.

Bridge Replacement and Rehabilitation

Phase	Previous Requests		Annual Element		Federal Funding Requests						Project Totals
	Previous Federal Funds	Previous Matching Funds	FY 2010 Federal Funds	FY 2010 Matching Funds	FY 2011 Federal Funds	FY 2011 Matching Funds	FY 2012 Federal Funds	FY 2012 Matching Funds	FY 2013 Federal Funds	FY 2013 Matching Funds	Estimated Project Total
CON			\$1,440	\$360							\$1,800
OTH											\$0
PE	\$250	\$200									\$450
PP											\$0
ROW											\$0
Totals	\$250	\$200	\$1,440	\$360	\$0	\$0	\$0	\$0	\$0	\$0	\$2,250

Dogwood Road Bridge over Ben's Run Bridge Repair/Deck Replacement



Source: Baltimore Metropolitan Council

Thornton Mill Rd. Bridge No. 193

TIP Id #	13-0703-13	Year of Operation	2010
Agency	Local Project	Project Type	Bridge repair/deck replacement
Project Category	Highway Preservation	Functional Class	Local
Conformity Status	Exempt	Physical Data	2/2
CIP/CTP Page#	NA		

Description	Justification
Replacement Structure.	This replacement project will enhance transportation facilities, improve safety, and provide access for goods movement.

Bridge Replacement and Rehabilitation

Phase	Previous Requests		Annual Element		Federal Funding Requests						Project Totals
	Previous Federal Funds	Previous Matching Funds	FY 2010 Federal Funds	FY 2010 Matching Funds	FY 2011 Federal Funds	FY 2011 Matching Funds	FY 2012 Federal Funds	FY 2012 Matching Funds	FY 2013 Federal Funds	FY 2013 Matching Funds	Estimated Project Total
CON			\$560	\$140							\$700
OTH											\$0
PE	\$170	\$50									\$220
PP											\$0
ROW											\$0
Totals	\$170	\$50	\$560	\$140	\$0	\$0	\$0	\$0	\$0	\$0	\$920

Annapolis Road Bridge



Source: Baltimore Metropolitan Council

Eagle Mill Road Bridge #117

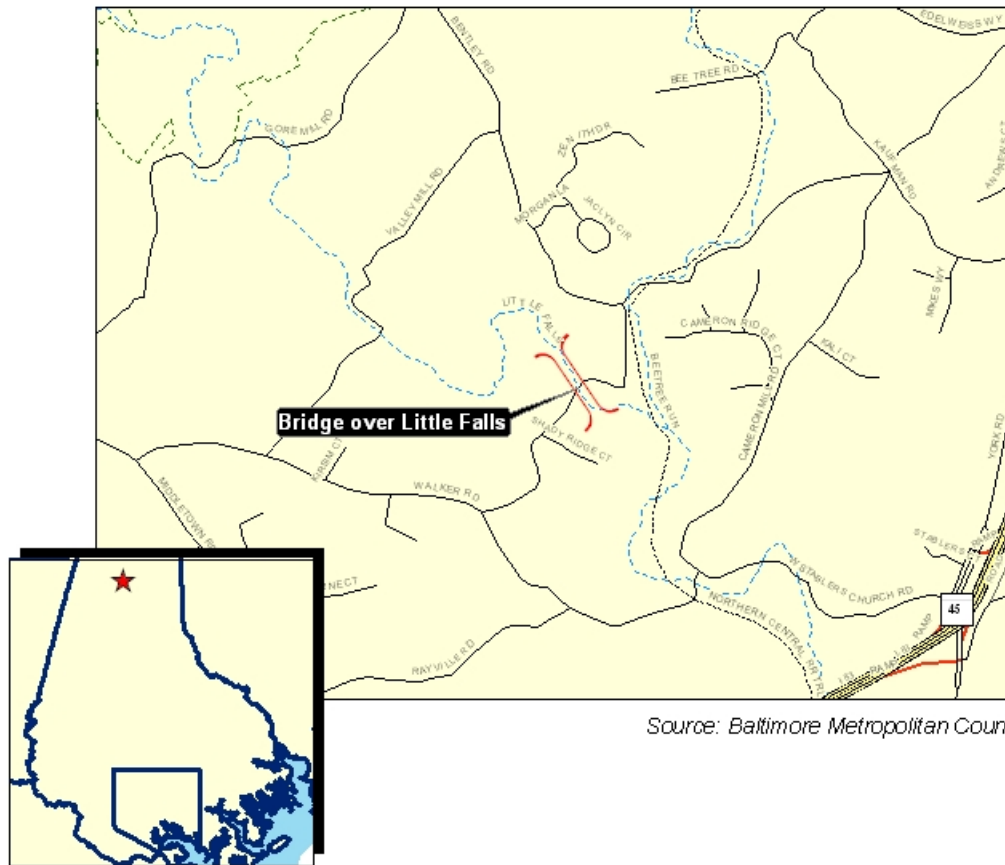
TIP Id #	13-0801-13	Year of Operation	2011
Agency	Local Project	Project Type	Bridge repair/deck replacement
Project Category	Highway Preservation	Functional Class	Local
Conformity Status	Exempt	Physical Data	NA
CIP/CTP Page#	NA		

Description	Justification
Replacement of Existing Bridge	This replacement project will enhance transportation facilities, improve safety, and provide access for goods movement.

Bridge Replacement and Rehabilitation

Phase	Previous Requests		Annual Element		Federal Funding Requests						Project Totals
	Previous Federal Funds	Previous Matching Funds	FY 2010 Federal Funds	FY 2010 Matching Funds	FY 2011 Federal Funds	FY 2011 Matching Funds	FY 2012 Federal Funds	FY 2012 Matching Funds	FY 2013 Federal Funds	FY 2013 Matching Funds	Estimated Project Total
CON			\$680	\$170							\$850
OTH											\$0
PE	\$200	\$100									\$300
PP											\$0
ROW											\$0
Totals	\$200	\$100	\$680	\$170	\$0	\$0	\$0	\$0	\$0	\$0	\$1,150

Eagle Mill Road Bridge #117



Source: Baltimore Metropolitan Council

Mohrs Lane Bridge #143

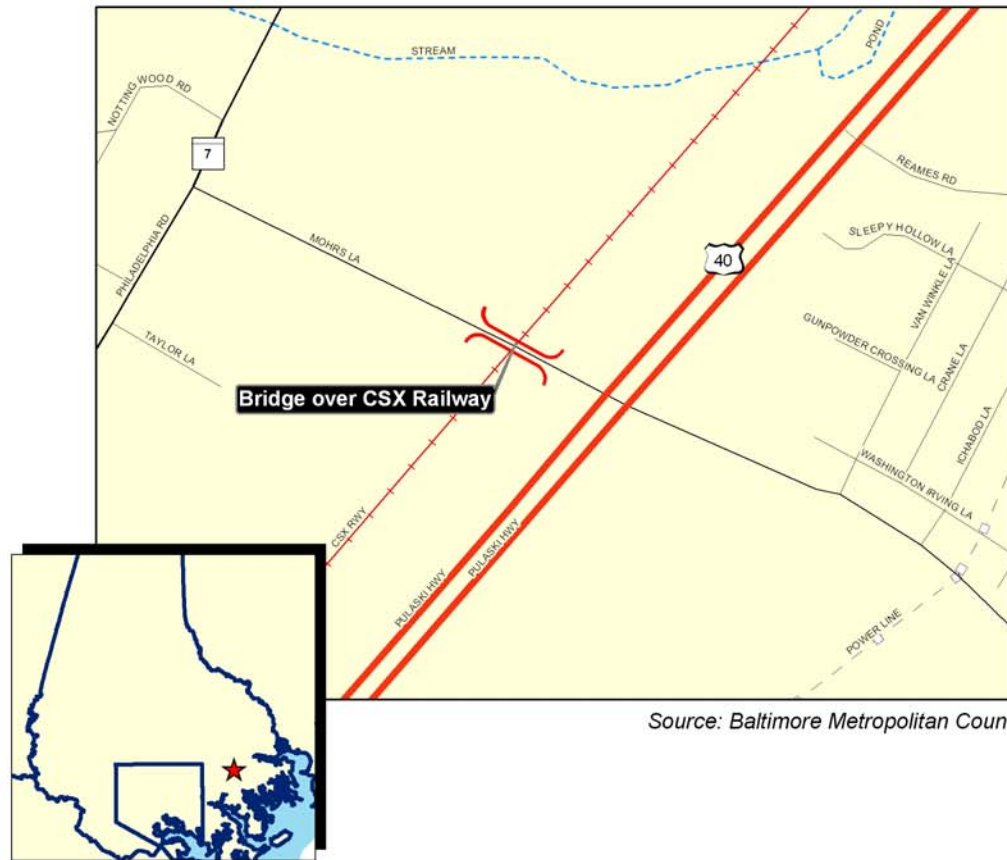
TIP Id #	13-0803-13	Year of Operation	2014
Agency	Local Project	Project Type	Bridge repair/deck replacement
Project Category	Highway Preservation	Functional Class	Local
Conformity Status	Not Exempt	Physical Data	2 to 2
CIP/CTP Page#	NA		

Description	Justification
Replacement and widening of existing bridge to include sidewalks and larger lanes as well as the approaches to accommodate future Campbell Blvd.	This replacement project will enhance transportation facilities, improve safety, and provide access for goods movement.

Bridge Replacement and Rehabilitation

Phase	Previous Requests		Annual Element		Federal Funding Requests						Project Totals
	Previous Federal Funds	Previous Matching Funds	FY 2010 Federal Funds	FY 2010 Matching Funds	FY 2011 Federal Funds	FY 2011 Matching Funds	FY 2012 Federal Funds	FY 2012 Matching Funds	FY 2013 Federal Funds	FY 2013 Matching Funds	Estimated Project Total
CON							\$4,000	\$1,000			\$5,000
OTH											\$0
PE			\$400	\$100							\$500
PP											\$0
ROW							\$100				\$100
Totals	\$0	\$0	\$400	\$100	\$0	\$0	\$4,100	\$1,000	\$0	\$0	\$5,600

Mohrs Lane Bridge #143



Source: Baltimore Metropolitan Council

Harris Mill Road Bridge #191

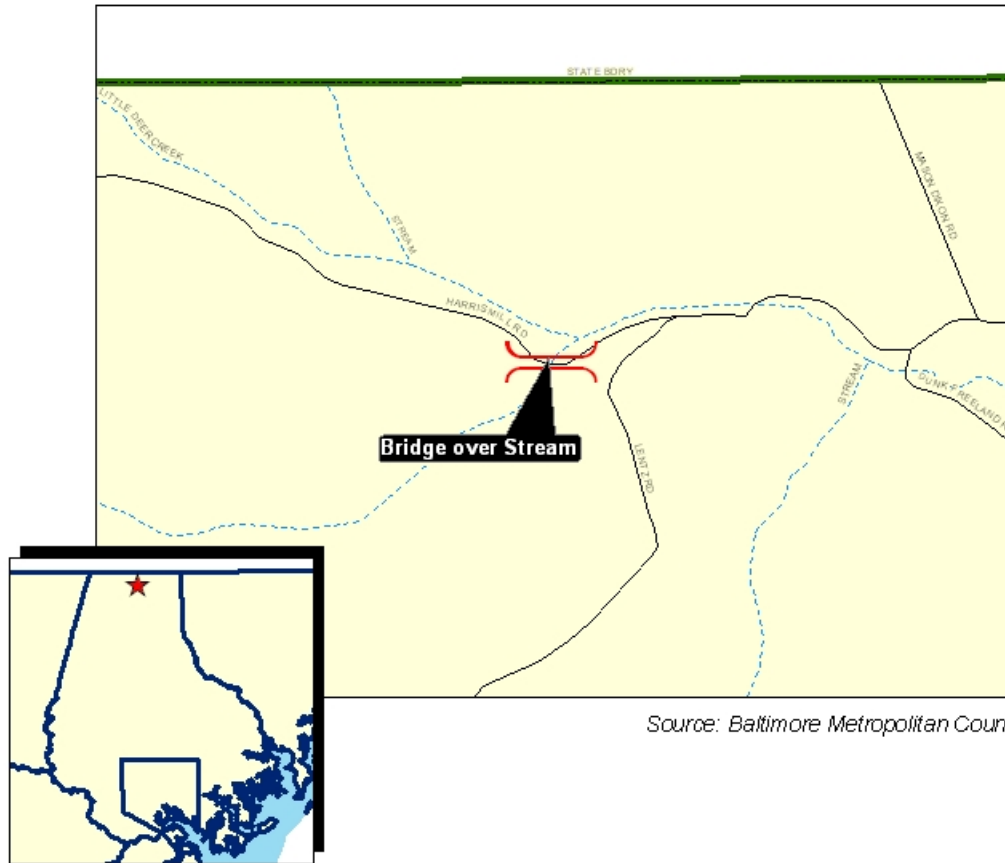
TIP Id #	13-0804-13	Year of Operation	2011
Agency	Local Project	Project Type	Bridge repair/deck replacement
Project Category	Highway Preservation	Functional Class	Local
Conformity Status	Exempt	Physical Data	NA
CIP/CTP Page#	NA		

Description	Justification
Replacement of existing bridge.	This replacement project will enhance transportation facilities, improve safety, and provide access for goods movement.

Bridge Replacement and Rehabilitation

Phase	Previous Requests		Annual Element		Federal Funding Requests						Project Totals
	Previous Federal Funds	Previous Matching Funds	FY 2010 Federal Funds	FY 2010 Matching Funds	FY 2011 Federal Funds	FY 2011 Matching Funds	FY 2012 Federal Funds	FY 2012 Matching Funds	FY 2013 Federal Funds	FY 2013 Matching Funds	Estimated Project Total
CON			\$800	\$200							\$1,000
OTH											\$0
PE											\$0
PP											\$0
ROW											\$0
Totals	\$0	\$0	\$800	\$200	\$0	\$0	\$0	\$0	\$0	\$0	\$1,000

Harris Mill Road Bridge #191



Wildwood Avenue Bridge #303

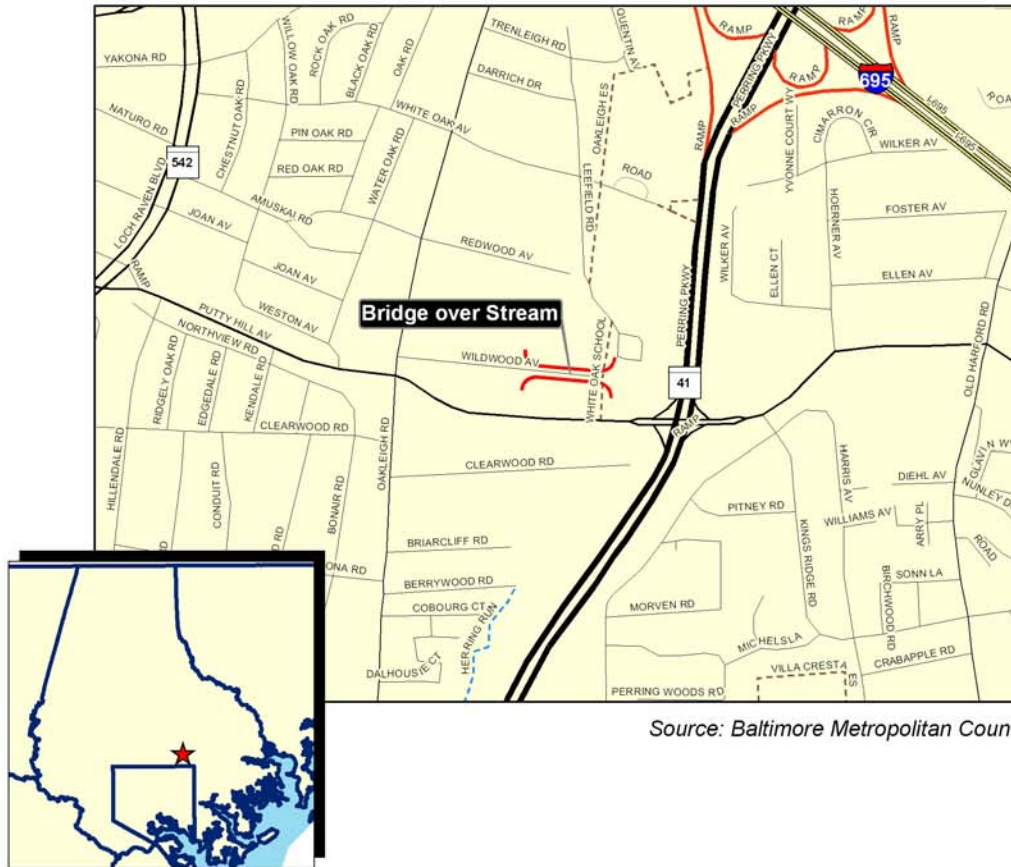
TIP Id #	13-1001-13	Year of Operation	2014
Agency	Local Project	Project Type	Bridge repair/deck replacement
Project Category	Highway Preservation	Functional Class	NA
Conformity Status	Exempt	Physical Data	NA
CIP/CTP Page#	NA		

Description	Justification
Replacement of the existing bridge.	This replacement project will enhance transportation facilities, improve safety, and provide access for goods movement.

Bridge Replacement and Rehabilitation

Phase	Previous Requests		Annual Element		Federal Funding Requests						Project Totals
	Previous Federal Funds	Previous Matching Funds	FY 2010 Federal Funds	FY 2010 Matching Funds	FY 2011 Federal Funds	FY 2011 Matching Funds	FY 2012 Federal Funds	FY 2012 Matching Funds	FY 2013 Federal Funds	FY 2013 Matching Funds	Estimated Project Total
CON											\$0
OTH											\$0
PE							\$240	\$60			\$300
PP											\$0
ROW											\$0
Totals	\$0	\$0	\$0	\$0	\$0	\$0	\$240	\$60	\$0	\$0	\$300

Wildwood Avenue Bridge #303



Source: Baltimore Metropolitan Council

Ensor Road Bridge #158 Over Third Mine Branch

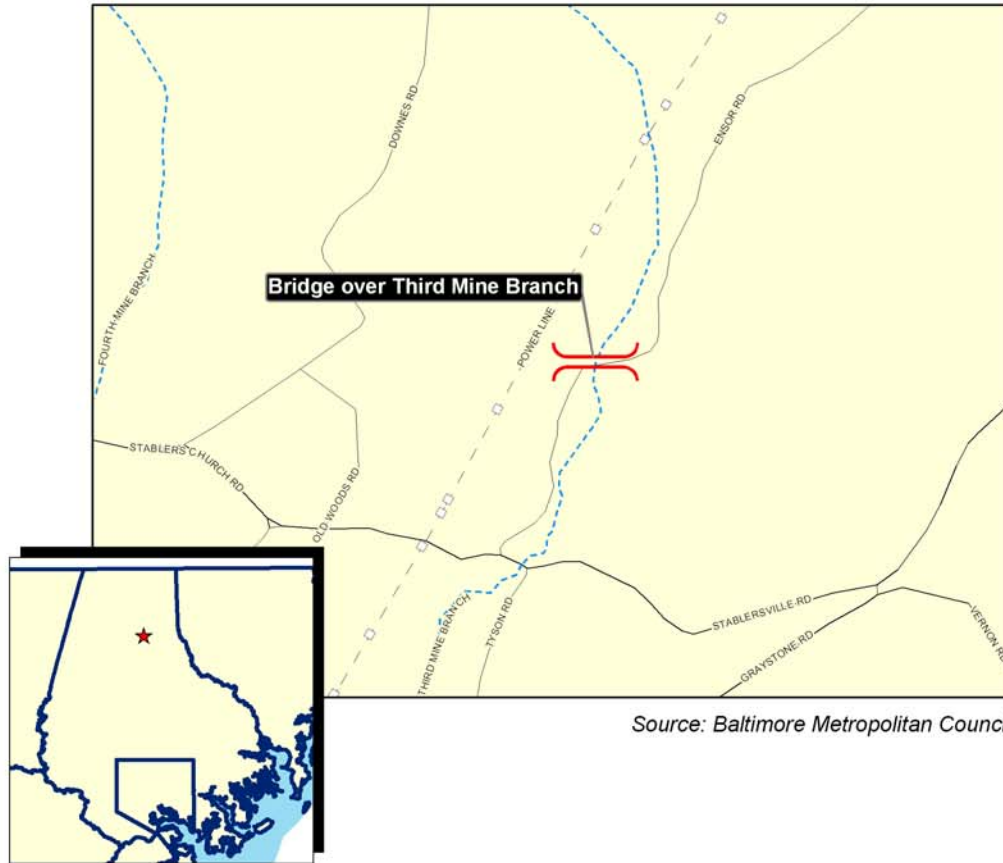
TIP Id #	13-1003-13	Year of Operation	2012
Agency	Local Project	Project Type	Bridge repair/deck replacement
Project Category	Highway Preservation	Functional Class	Local
Conformity Status	Exempt	Physical Data	NA
CIP/CTP Page#	NA		

Description	Justification
Replacement of existing bridge.	This replacement project will enhance transportation facilities, improve safety, and provide access for goods movement.

Bridge Replacement and Rehabilitation

Phase	Previous Requests		Annual Element		Federal Funding Requests						Project Totals
	Previous Federal Funds	Previous Matching Funds	FY 2010 Federal Funds	FY 2010 Matching Funds	FY 2011 Federal Funds	FY 2011 Matching Funds	FY 2012 Federal Funds	FY 2012 Matching Funds	FY 2013 Federal Funds	FY 2013 Matching Funds	Estimated Project Total
CON							\$700	\$300			\$1,000
OTH											\$0
PE			\$300	\$100							\$400
PP											\$0
ROW											\$0
Totals	\$0	\$0	\$300	\$100	\$0	\$0	\$700	\$300	\$0	\$0	\$1,400

Ensor Road Bridge #158



Source: Baltimore Metropolitan Council

Gunpowder Road Bridge #409

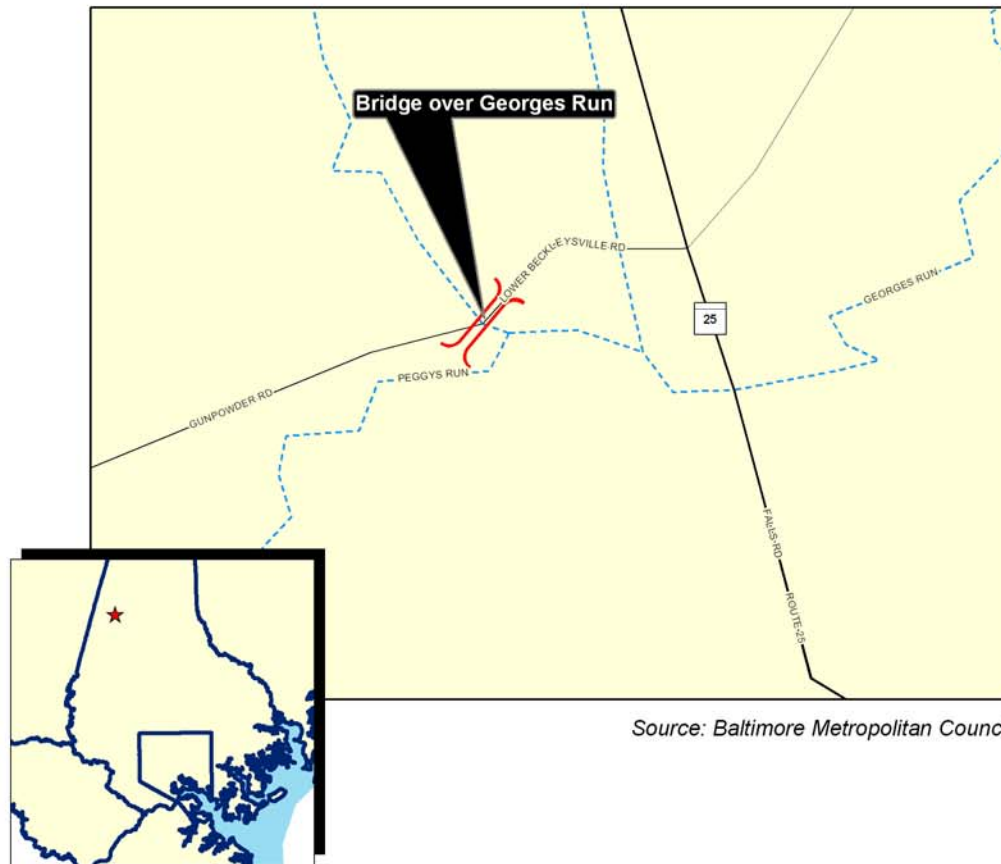
TIP Id #	13-1005-13	Year of Operation	2014
Agency	Local Project	Project Type	Bridge repair/deck replacement
Project Category	Highway Preservation	Functional Class	Local
Conformity Status	Exempt	Physical Data	NA
CIP/CTP Page#	NA		

Description	Justification
Replacement of the existing bridge.	This replacement project will enhance transportation facilities, improve safety, and provide access for goods movement.

Bridge Replacement and Rehabilitation

Phase	Previous Requests		Annual Element		Federal Funding Requests						Project Totals
	Previous Federal Funds	Previous Matching Funds	FY 2010 Federal Funds	FY 2010 Matching Funds	FY 2011 Federal Funds	FY 2011 Matching Funds	FY 2012 Federal Funds	FY 2012 Matching Funds	FY 2013 Federal Funds	FY 2013 Matching Funds	Estimated Project Total
CON											\$0
OTH											\$0
PE							\$300	\$100			\$400
PP											\$0
ROW										\$50	\$50
Totals	\$0	\$0	\$0	\$0	\$0	\$0	\$300	\$100	\$0	\$50	\$450

Gunpowder Road Bridge #409



Hess Road Bridge #10

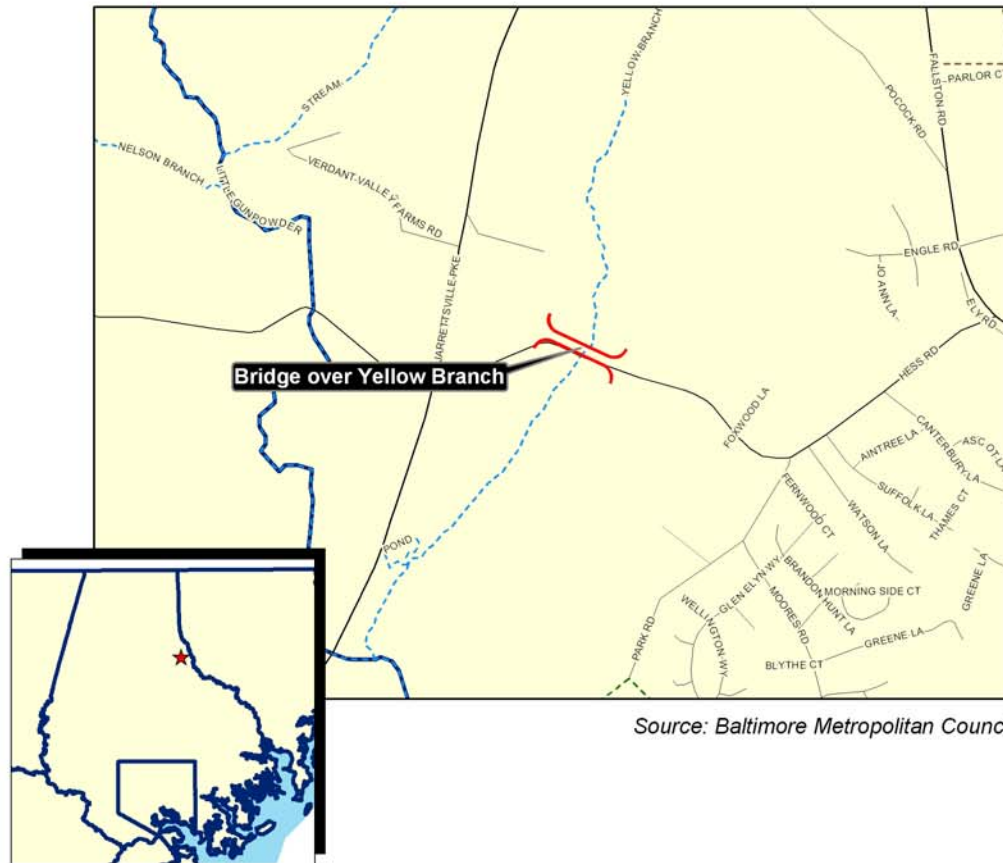
TIP Id #	13-1006-13	Year of Operation	2014
Agency	Local Project	Project Type	Bridge repair/deck replacement
Project Category	Highway Preservation	Functional Class	Local
Conformity Status	Exempt	Physical Data	NA
CIP/CTP Page#	NA		

Description	Justification
Replacement of the existing bridge.	This replacement project will enhance transportation facilities, improve safety, and provide access for goods movement.

Bridge Replacement and Rehabilitation

Phase	Previous Requests		Annual Element		Federal Funding Requests						Project Totals
	Previous Federal Funds	Previous Matching Funds	FY 2010 Federal Funds	FY 2010 Matching Funds	FY 2011 Federal Funds	FY 2011 Matching Funds	FY 2012 Federal Funds	FY 2012 Matching Funds	FY 2013 Federal Funds	FY 2013 Matching Funds	Estimated Project Total
CON											\$0
OTH											\$0
PE							\$300	\$100			\$400
PP											\$0
ROW											\$0
Totals	\$0	\$0	\$0	\$0	\$0	\$0	\$300	\$100	\$0	\$0	\$400

Hess Road Bridge #10



Left blank intentionally

Clean & Paint Baltimore County Bridges

TIP Id #	13-1011-13	Year of Operation	2010
Agency	Local Project	Project Type	Bridge repair/deck replacement
Project Category	Highway Preservation	Functional Class	NA
Conformity Status	Exempt	Physical Data	NA
CIP/CTP Page#	NA		

Description	Justification
Cleaning & Painting of Baltimore County Steel Bridges No. B-118, B-132, B-254 & B-423.	Existing paint coatings on the steel beams is beyond its service life and in the process of failing. Bridges are located throughout the County.

Bridge Replacement and Rehabilitation

Phase	Previous Requests		Annual Element		Federal Funding Requests						Project Totals
	Previous Federal Funds	Previous Matching Funds	FY 2010 Federal Funds	FY 2010 Matching Funds	FY 2011 Federal Funds	FY 2011 Matching Funds	FY 2012 Federal Funds	FY 2012 Matching Funds	FY 2013 Federal Funds	FY 2013 Matching Funds	Estimated Project Total
CON			\$1,320	\$330							\$1,650
OTH											\$0
PE											\$0
PP											\$0
ROW											\$0
Totals	\$0	\$0	\$1,320	\$330	\$0	\$0	\$0	\$0	\$0	\$0	\$1,650

2010 - 2013 Transportation Improvement Program

Baltimore County

Highway Preservation

Bridge No. 100, Hammonds Ferry Rd/CSX

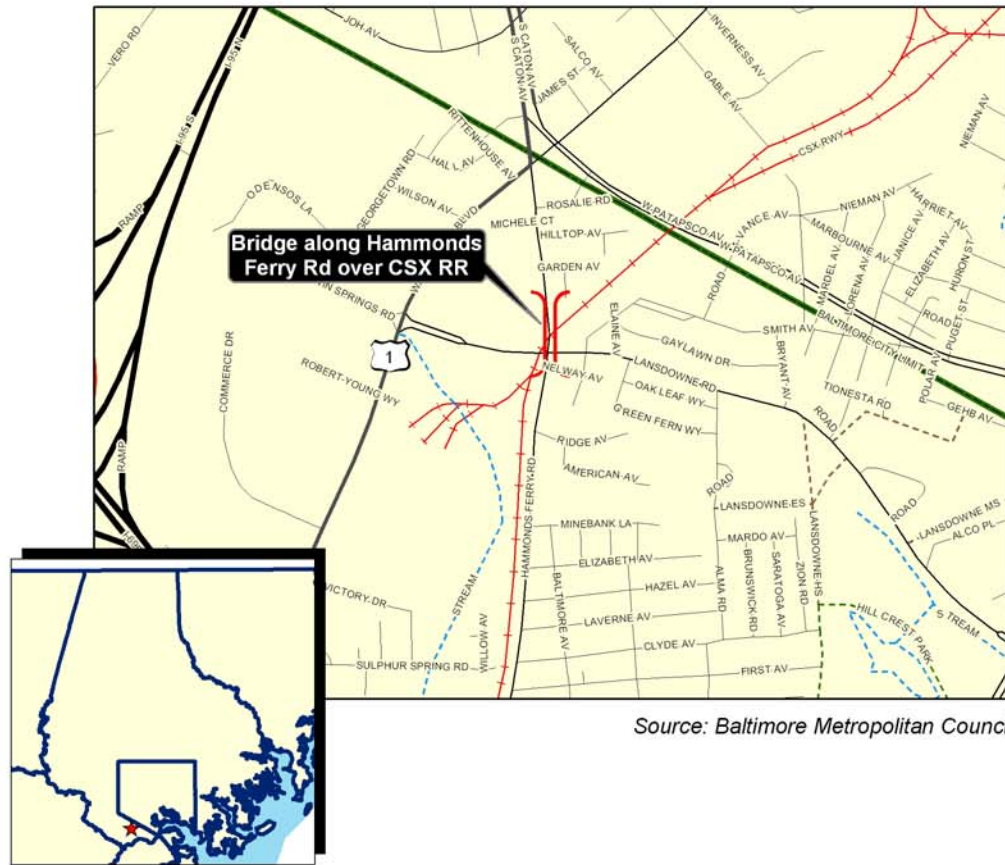
TIP Id #	13-1012-13	Year of Operation	2012
Agency	Local Project	Project Type	Bridge repair/deck replacement
Project Category	Highway Preservation	Functional Class	Collectors, major or minor
Conformity Status	Exempt	Physical Data	NA
CIP/CTP Page#	NA		

Description	Justification
Deck replacement and rehabilitation of Bridge No. B-100 on Hammonds Ferry Road over CSX railroad.	Bridge has deteriorated and in need of rehabilitation.

Bridge Replacement and Rehabilitation

Phase	Previous Requests		Annual Element		Federal Funding Requests						Project Totals
	Previous Federal Funds	Previous Matching Funds	FY 2010 Federal Funds	FY 2010 Matching Funds	FY 2011 Federal Funds	FY 2011 Matching Funds	FY 2012 Federal Funds	FY 2012 Matching Funds	FY 2013 Federal Funds	FY 2013 Matching Funds	Estimated Project Total
CON							\$2,000	\$500			\$2,500
OTH											\$0
PE			\$240	\$60							\$300
PP											\$0
ROW											\$0
Totals	\$0	\$0	\$240	\$60	\$0	\$0	\$2,000	\$500	\$0	\$0	\$2,800

Bridge No. 100



Source: Baltimore Metropolitan Council

Bridge No. 103, Painters Mill Rd/Gwynns Falls

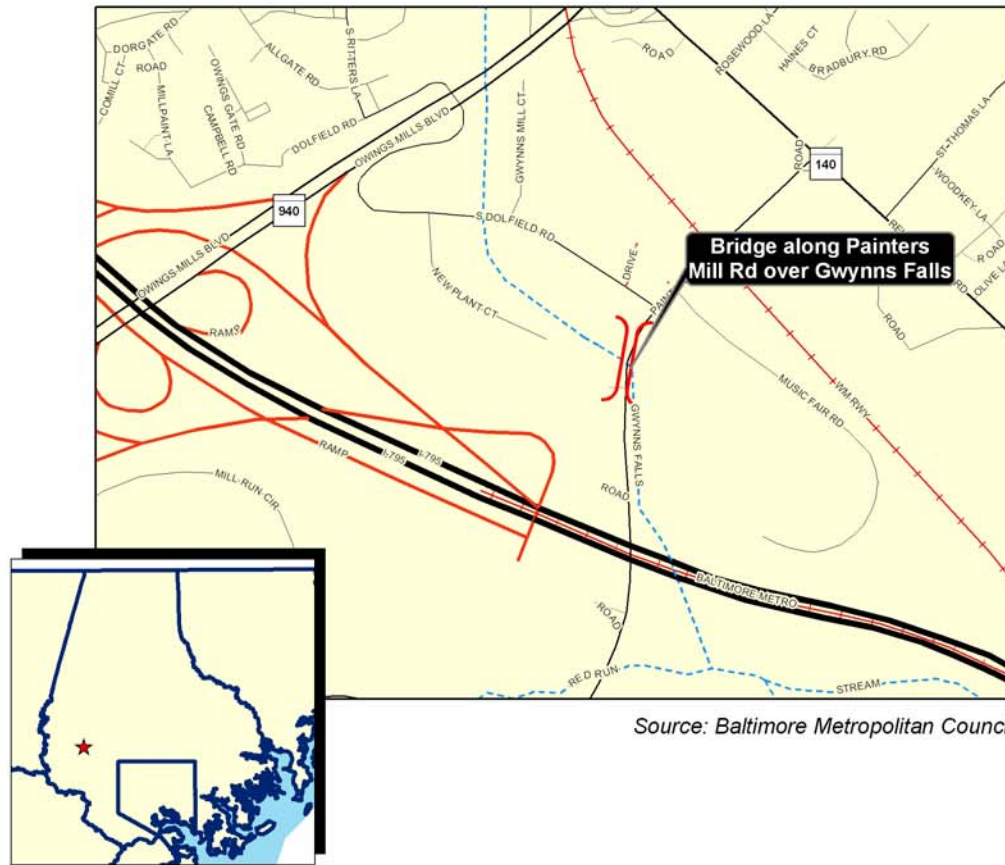
TIP Id #	13-1013-13	Year of Operation	2010
Agency	Local Project	Project Type	Bridge repair/deck replacement
Project Category	Highway Preservation	Functional Class	Collectors, major or minor
Conformity Status	Exempt	Physical Data	NA
CIP/CTP Page#	NA		

Description	Justification
Superstructure replacement of Bridge No. 103 on Painters Mill Road over Gwynns Falls.	The deck is deteriorated and the bridge posted with load restrictions. A preliminary study indicated that replacing the superstructure was the most feasible course of action.

Bridge Replacement and Rehabilitation

Phase	Previous Requests		Annual Element		Federal Funding Requests						Project Totals
	Previous Federal Funds	Previous Matching Funds	FY 2010 Federal Funds	FY 2010 Matching Funds	FY 2011 Federal Funds	FY 2011 Matching Funds	FY 2012 Federal Funds	FY 2012 Matching Funds	FY 2013 Federal Funds	FY 2013 Matching Funds	Estimated Project Total
CON			\$1,872	\$468							\$2,340
OTH											\$0
PE	\$108	\$22	\$120	\$30							\$280
PP											\$0
ROW											\$0
Totals	\$108	\$22	\$1,992	\$498	\$0	\$0	\$0	\$0	\$0	\$0	\$2,620

Bridge No. 103



Bridge No. 65, MT. Zion Road/Piney Creek

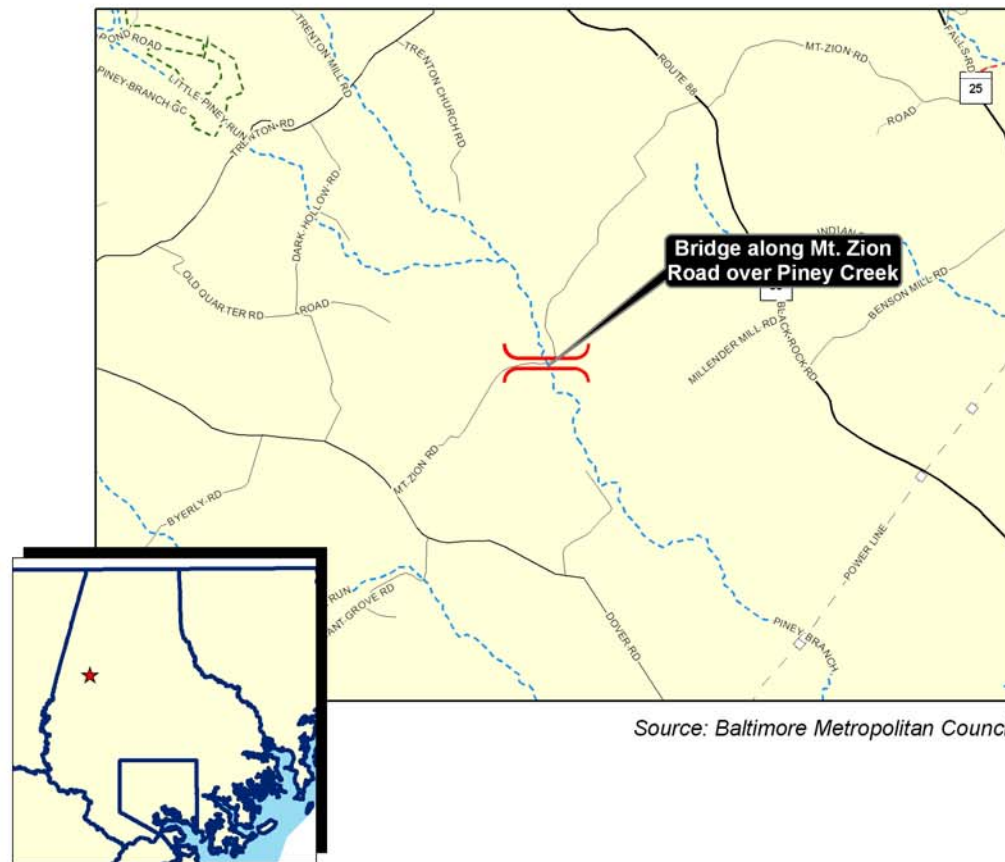
TIP Id #	13-1014-13	Year of Operation	2010
Agency	Local Project	Project Type	Bridge repair/deck replacement
Project Category	Highway Preservation	Functional Class	Collectors, major or minor
Conformity Status		Physical Data	NA
CIP/CTP Page#	NA		

Description	Justification
Replacement of Bridge No. B-65 on Mt. Zion Road over Piney Run	The bridge is severely deteriorated and currently closed to traffic.

Bridge Replacement and Rehabilitation

Phase	Previous Requests		Annual Element		Federal Funding Requests						Project Totals
	Previous Federal Funds	Previous Matching Funds	FY 2010 Federal Funds	FY 2010 Matching Funds	FY 2011 Federal Funds	FY 2011 Matching Funds	FY 2012 Federal Funds	FY 2012 Matching Funds	FY 2013 Federal Funds	FY 2013 Matching Funds	Estimated Project Total
CON			\$656	\$164							\$820
OTH											\$0
PE	\$200	\$50									\$250
PP											\$0
ROW											\$0
Totals	\$200	\$50	\$656	\$164	\$0	\$0	\$0	\$0	\$0	\$0	\$1,070

Bridge No. 65



Biennial Bridge Inspection

TIP Id #	13-8901-14	Year of Operation	Ongoing
Agency	Local Project	Project Type	Bridge inspections
Project Category	Highway Preservation	Functional Class	NA
Conformity Status	Exempt	Physical Data	NA
CIP/CTP Page#	NA		

Description	Justification
Countywide inspection of all bridges as federally mandated.	Federally mandated and federally aided program which requires inspection of all bridges over 20 feet in length every two years. The county also inspects all bridges fewer than 20 feet every two years. Certain critical bridges and the investigation of scour effects on bridges are included in this program.

Bridge Replacement and Rehabilitation

Phase	Previous Requests		Annual Element		Federal Funding Requests						Project Totals
	Previous Federal Funds	Previous Matching Funds	FY 2010 Federal Funds	FY 2010 Matching Funds	FY 2011 Federal Funds	FY 2011 Matching Funds	FY 2012 Federal Funds	FY 2012 Matching Funds	FY 2013 Federal Funds	FY 2013 Matching Funds	Estimated Project Total
CON											\$0
OTH	\$640	\$360	\$360	\$1,040			\$675	\$225			\$3,300
PE											\$0
PP											\$0
ROW											\$0
Totals	\$640	\$360	\$360	\$1,040	\$0	\$0	\$675	\$225	\$0	\$0	\$3,300