

State Highway Administration

Baltimore City

Fort McHenry Visitors Center/Parking

TIP Id #	62-0634-99	Year of Operation	2012
Agency	State Highway Administration	Project Type	Miscellaneous
Project Category	Miscellaneous	Functional Class	NA
Conformity Status	Exempt	Physical Data	NA
CIP/CTP Page#	NA		

Description	Justification
<p>This project entails constructing a new Education/Administration Center as proposed in the 1988 amendment to the 1968 Master Plan/Environmental Assessment. This new structure will replace a 5,700 s.f. building designed for visitation of 250,000 per year. Current annual visitation is over 620,000. The proposed structure (15,000-20,000 s.f.) will provide critical visitor services such as education and orientation needed to successfully and safely visit the park. Functions to be included are visitor services and orientation, accessible restroom facilities, exhibits, multi-purpose space, auditorium, consolidated staff offices, bookstore, library, and partner group office space. The 1988 amended Master Plan/Environmental Assessment also includes redesign of the parking area to facilitate more busses and cars.</p> <p>* Three SAFETEA-LU earmarks.</p>	<p>The current park visitor center was built in 1964, the building cannot reasonably accommodate school and tour groups, common in the spring and summer months. Currently neither the restrooms nor administrative areas in the building are wheelchair accessible. In trying to facilitate the number of large groups that routinely visit, the park regularly exceeds safe building occupancy levels.</p>

Section 1602 High Priority Projects

Phase	Previous Requests		Annual Element		Federal Funding Requests						Project Totals
	Previous Federal Funds	Previous Matching Funds	FY 2008 Federal Funds	FY 2008 Matching Funds	FY 2009 Federal Funds	FY 2009 Matching Funds	FY 2010 Federal Funds	FY 2010 Matching Funds	FY 11-12 Federal Funds	FY 11-12 Matching Funds	Estimated Project Total
CON			\$11,060	\$2,765							\$13,825
OTH											\$0
PE											\$0
PP											\$0
ROW											\$0
Totals	\$0	\$0	\$11,060	\$2,765	\$0	\$0	\$0	\$0	\$0	\$0	\$13,825

Fort McHenry Visitors Center/Parking (\$2 Mill)



Intersection Improvements for University of Maryland

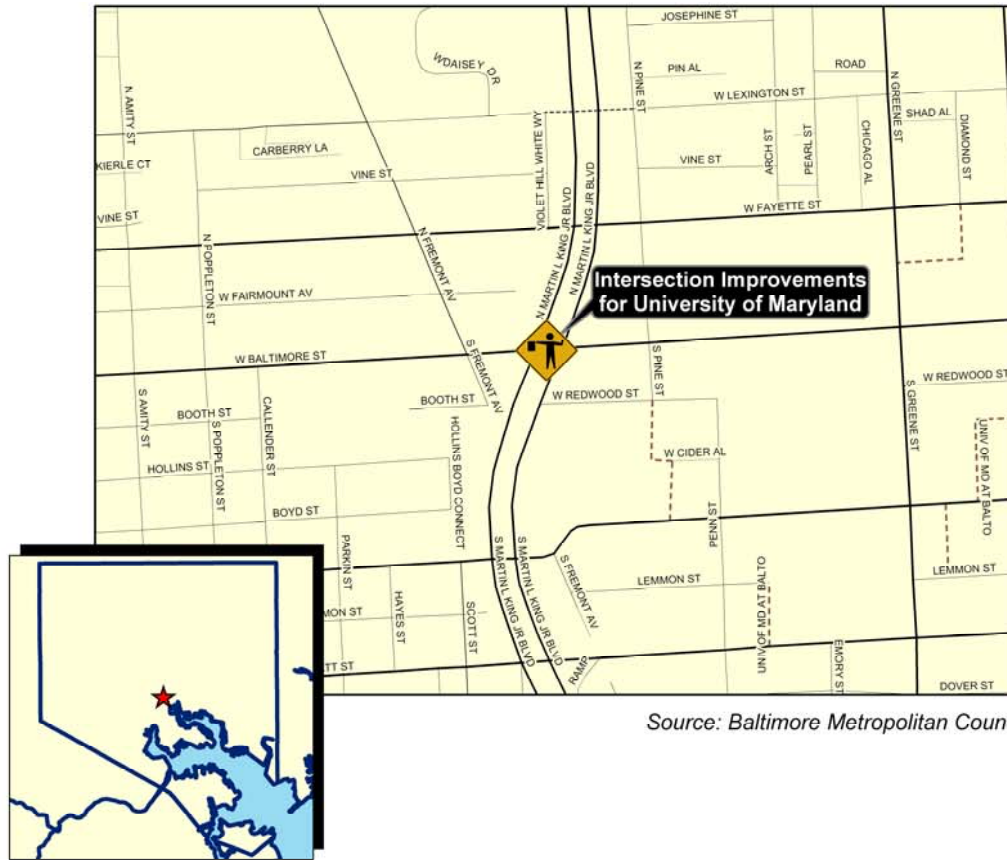
TIP Id #	62-0701-99	Year of Operation	2012
Agency	State Highway Administration	Project Type	Miscellaneous
Project Category	Miscellaneous	Functional Class	NA
Conformity Status	Exempt	Physical Data	NA
CIP/CTP Page#	NA		

Description	Justification
This is to augment improvements to intersections around the University of Maryland, particularly at MLK Boulevard and West Baltimore Street. There will be safety and operational improvements to improve both pedestrian and vehicular traffic through the area.	

Section 1602 High Priority Projects

Phase	Previous Requests		Annual Element		Federal Funding Requests						Project Totals
	Previous Federal Funds	Previous Matching Funds	FY 2008 Federal Funds	FY 2008 Matching Funds	FY 2009 Federal Funds	FY 2009 Matching Funds	FY 2010 Federal Funds	FY 2010 Matching Funds	FY 11-12 Federal Funds	FY 11-12 Matching Funds	Estimated Project Total
CON			\$2,000	\$500							\$2,500
OTH											\$0
PE											\$0
PP											\$0
ROW											\$0
Totals	\$0	\$0	\$2,000	\$500	\$0	\$0	\$0	\$0	\$0	\$0	\$2,500

Intersection Improvements for University of Maryland



Source: Baltimore Metropolitan Council

Coppin State University Pedestrian Bridge and Garage

TIP Id #	62-0702-99	Year of Operation	2012
Agency	State Highway Administration	Project Type	Miscellaneous
Project Category	Miscellaneous	Functional Class	NA
Conformity Status	Exempt	Physical Data	NA
CIP/CTP Page#	NA		

Description	Justification
Construct a pedestrian bridge and garage at Coppin State University in Baltimore.	

Section 1602 High Priority Projects

Phase	Previous Requests		Annual Element		Federal Funding Requests						Project Totals
	Previous Federal Funds	Previous Matching Funds	FY 2008 Federal Funds	FY 2008 Matching Funds	FY 2009 Federal Funds	FY 2009 Matching Funds	FY 2010 Federal Funds	FY 2010 Matching Funds	FY 11-12 Federal Funds	FY 11-12 Matching Funds	Estimated Project Total
CON			\$2,640	\$660							\$3,300
OTH											\$0
PE											\$0
PP											\$0
ROW											\$0
Totals	\$0	\$0	\$2,640	\$660	\$0	\$0	\$0	\$0	\$0	\$0	\$3,300

Coppin State University Pedestrian Bridge and Garage



Source: Baltimore Metropolitan Council

Left blank intentionally

State Highway Administration

Anne Arundel County

Broadneck Peninsula Trail

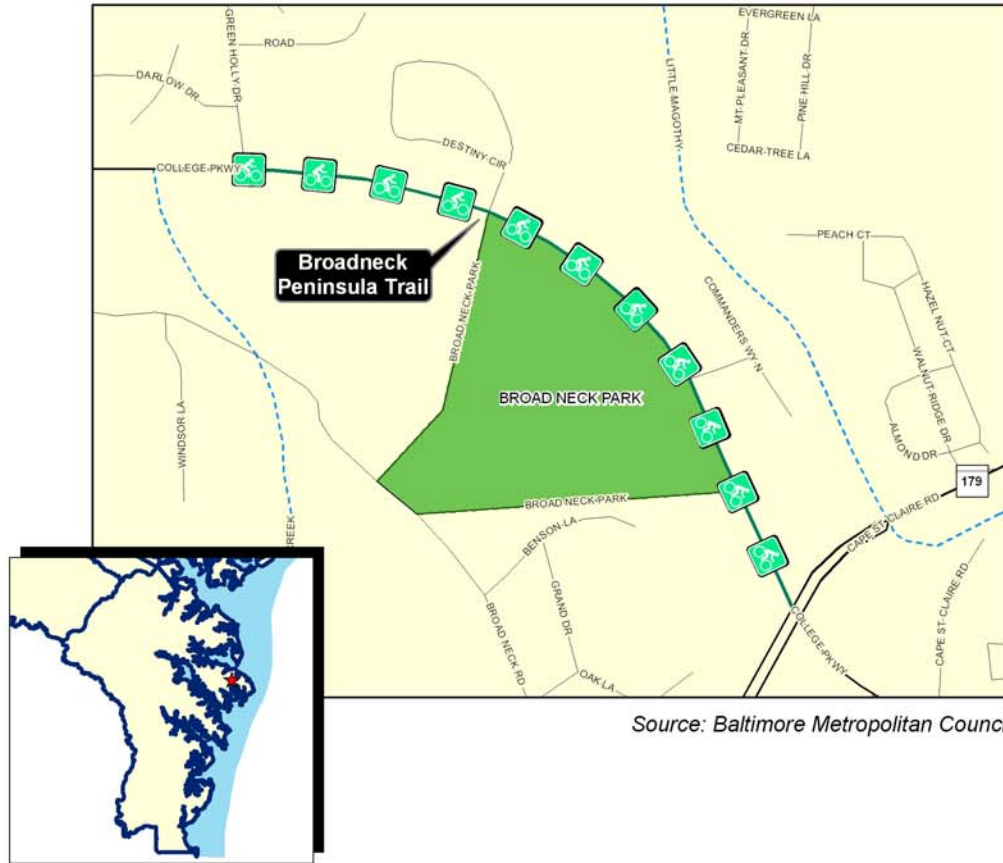
TIP Id #	61-0701-03	Year of Operation	2007
Agency	State Highway Administration	Project Type	Bicycle/pedestrian facilities
Project Category	Emission Reduction Strategy	Functional Class	NA
Conformity Status	Exempt	Physical Data	NA
CIP/CTP Page#	NA		

Description	Justification
Construct Phase I of the Broadneck Peninsula Trail from Green Holly Drive, at the Broadneck Park, to Cape St. Clair Road and the Nike site.	<p>This project is a multi-use trail that will ultimate connect to the Chesapeake Bay Bridge and Sandy Point State Park with the Baltimore & Annapolis Trail.</p> <p>* Could serve to improve conditions for bicycling and/or walking per approved local, regional and/or statewide bicycle and pedestrian planning documents.</p>

Section 1602 High Priority Projects

Phase	Previous Requests		Annual Element		Federal Funding Requests						Project Totals
	Previous Federal Funds	Previous Matching Funds	FY 2008 Federal Funds	FY 2008 Matching Funds	FY 2009 Federal Funds	FY 2009 Matching Funds	FY 2010 Federal Funds	FY 2010 Matching Funds	FY 11-12 Federal Funds	FY 11-12 Matching Funds	Estimated Project Total
CON			\$600	\$600							\$1,200
OTH											\$0
PE											\$0
PP											\$0
ROW											\$0
Totals	\$0	\$0	\$600	\$600	\$0	\$0	\$0	\$0	\$0	\$0	\$1,200

Broadneck Peninsula Trail



Source: Baltimore Metropolitan Council

South Shore Trail

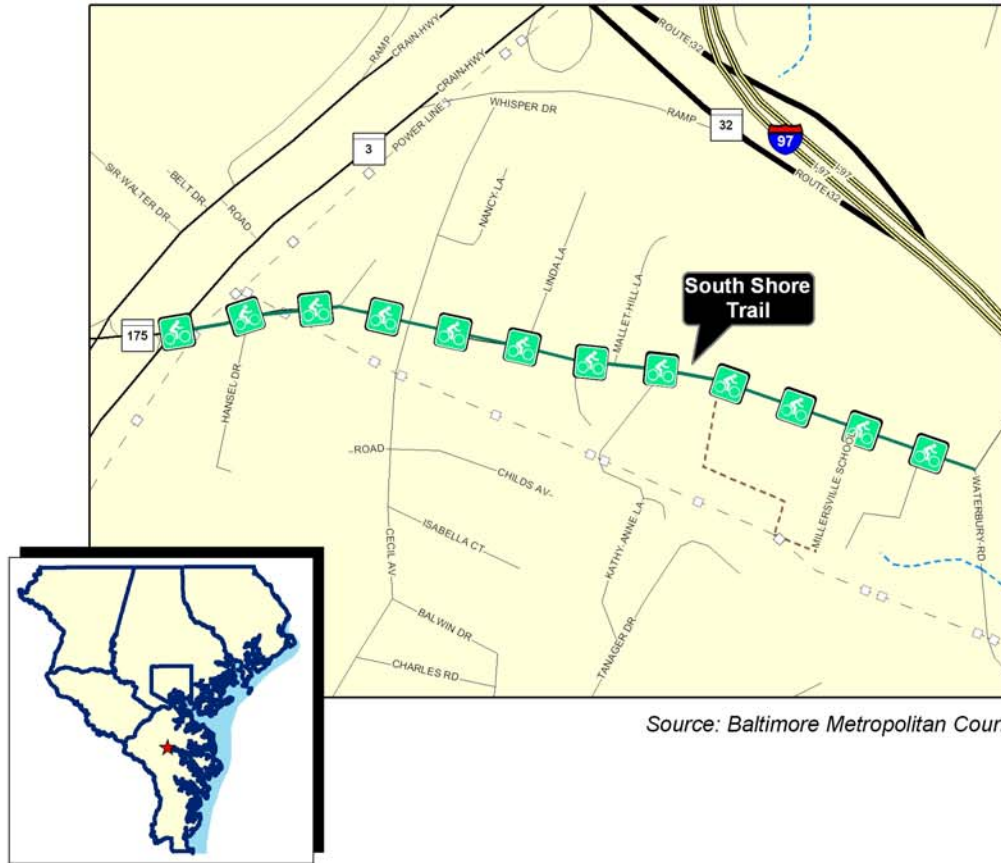
TIP Id #	61-0702-03	Year of Operation	2007
Agency	State Highway Administration	Project Type	Bicycle/pedestrian facilities
Project Category	Emission Reduction Strategy	Functional Class	NA
Conformity Status	Exempt	Physical Data	NA
CIP/CTP Page#	NA		

Description	Justification
Construct Phase I of the South Shore Trail from MD 3 at Millersville Road to I-97 at Waterbury Road. The project includes a 110 space parking lot, drainage structures, SWM devices and a 12 foot wide 60 foot bridge over Waterbury Road.	<p>This project will provide 1.82 miles of a multi-use trail that will ultimate connect to the Baltimore & Annapolis Trail.</p> <p>* Could serve to improve conditions for bicycling and/or walking per approved local, regional and/or statewide bicycle and pedestrian planning documents.</p>

Section 1602 High Priority Projects

Phase	Previous Requests		Annual Element		Federal Funding Requests						Project Totals
	Previous Federal Funds	Previous Matching Funds	FY 2008 Federal Funds	FY 2008 Matching Funds	FY 2009 Federal Funds	FY 2009 Matching Funds	FY 2010 Federal Funds	FY 2010 Matching Funds	FY 11-12 Federal Funds	FY 11-12 Matching Funds	Estimated Project Total
CON			\$800	\$800							\$1,600
OTH											\$0
PE											\$0
PP											\$0
ROW											\$0
Totals	\$0	\$0	\$800	\$800	\$0	\$0	\$0	\$0	\$0	\$0	\$1,600

South Shore Trail



MD 3, US 50 to MD 32

TIP Id #	61-0105-41	Year of Operation	n/a
Agency	State Highway Administration	Project Type	Roadway widening
Project Category	Highway Capacity	Functional Class	Principal arterial
Conformity Status	Programmatically Conforming	Physical Data	4-6 lanes to 6 lanes; 8.9 miles
CIP/CTP Page#	AA-5		

Description	Justification
Study to upgrade MD 3 from US 50 to MD 32 to address safety and capacity concerns (8.9 miles). Wide curb lanes and shoulders will accommodate bicycles. Bicycle and pedestrian access will be provided where appropriate.	This project would improve safety and operations and relieve congestion in this heavily traveled corridor.

National Highway System

Phase	Previous Requests		Annual Element		Federal Funding Requests						Project Totals
	Previous Federal Funds	Previous Matching Funds	FY 2008 Federal Funds	FY 2008 Matching Funds	FY 2009 Federal Funds	FY 2009 Matching Funds	FY 2010 Federal Funds	FY 2010 Matching Funds	FY 11-12 Federal Funds	FY 11-12 Matching Funds	Estimated Project Total
CON											\$0
OTH											\$0
PE											\$0
PP	\$2,112	\$3,017	\$70	\$100							\$5,299
ROW		\$4,643									\$4,643
Totals	\$2,112	\$7,660	\$70	\$100	\$0	\$0	\$0	\$0	\$0	\$0	\$9,942

2008 - 2012 Transportation Improvement Program

State Highway Administration

Highway Capacity

MD 295, MD 100 to I-195

TIP Id #	61-0501-19	Year of Operation	n/a
Agency	State Highway Administration	Project Type	Roadway widening
Project Category	Highway Capacity	Functional Class	Freeway
Conformity Status	Programmatically Conforming	Physical Data	4 lanes to 6 lanes; 3.3 miles
CIP/CTP Page#	AA-6		

Description	Justification
Study to widen MD 295 from 4 to 6 lanes from MD 100 to I-195 including an interchange at Hanover Road and improvements to Hanover Road from the CSX railroad tracks in Howard County to MD 170.	This project would help ease congestion and improve access to one of the State's economic engines, the Baltimore-Washington International Thurgood Marshall Airport.

National Highway System

Phase	Previous Requests		Annual Element		Federal Funding Requests						Project Totals
	Previous Federal Funds	Previous Matching Funds	FY 2008 Federal Funds	FY 2008 Matching Funds	FY 2009 Federal Funds	FY 2009 Matching Funds	FY 2010 Federal Funds	FY 2010 Matching Funds	FY 11-12 Federal Funds	FY 11-12 Matching Funds	Estimated Project Total
CON											\$0
OTH											\$0
PE											\$0
PP	\$766	\$958	\$560	\$700	\$674	\$842					\$4,500
ROW											\$0
Totals	\$766	\$958	\$560	\$700	\$674	\$842	\$0	\$0	\$0	\$0	\$4,500

2008 - 2012 Transportation Improvement Program

State Highway Administration

Highway Capacity

MD 295, Baltimore Washington Parkway

TIP Id #	61-0501-41	Year of Operation	2010
Agency	State Highway Administration	Project Type	Roadway widening
Project Category	Highway Capacity	Functional Class	Freeway
Conformity Status	Not Exempt	Physical Data	1.5 miles / 4-lane divided highway
CIP/CTP Page#	AA-2		

Description	Justification
Widen MD 295 from 4 to 6 lanes from I-695 (Baltimore Beltway) to I-195.	This project will ease growing congestion and improve access to one of the State's economic engines, the Baltimore-Washington International Thurgood Marshall Airport.

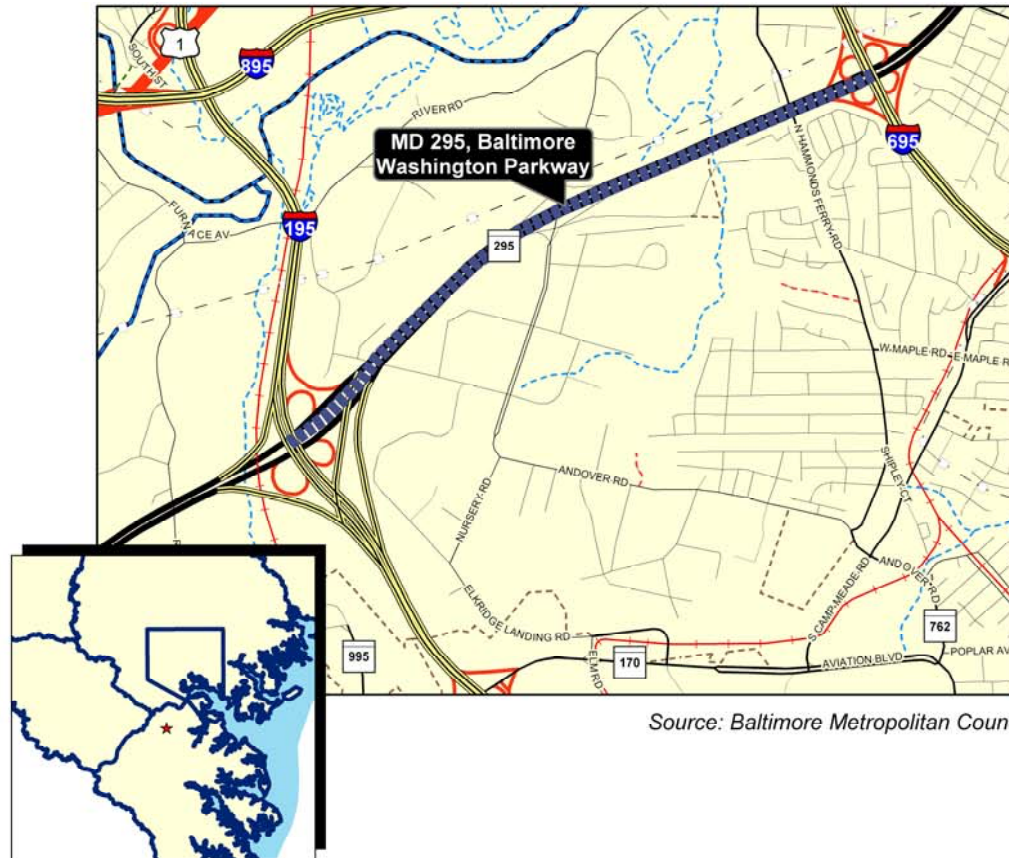
Section 1602 High Priority Projects

Phase	Previous Requests		Annual Element		Federal Funding Requests						Project Totals
	Previous Federal Funds	Previous Matching Funds	FY 2008 Federal Funds	FY 2008 Matching Funds	FY 2009 Federal Funds	FY 2009 Matching Funds	FY 2010 Federal Funds	FY 2010 Matching Funds	FY 11-12 Federal Funds	FY 11-12 Matching Funds	Estimated Project Total
CON	\$288	\$369	\$1,656	\$2,123	\$1,866	\$2,392	\$1,183	\$1,517			\$11,394
OTH											\$0
PE											\$0
PP											\$0
ROW											\$0
Totals	\$288	\$369	\$1,656	\$2,123	\$1,866	\$2,392	\$1,183	\$1,517	\$0	\$0	\$11,394

National Highway System

Phase	Previous Requests		Annual Element		Federal Funding Requests						Project Totals
	Previous Federal Funds	Previous Matching Funds	FY 2008 Federal Funds	FY 2008 Matching Funds	FY 2009 Federal Funds	FY 2009 Matching Funds	FY 2010 Federal Funds	FY 2010 Matching Funds	FY 11-12 Federal Funds	FY 11-12 Matching Funds	Estimated Project Total
CON	\$512	\$631	\$2,035	\$2,609	\$3,173	\$4,069	\$2,768	\$3,573			\$19,370
OTH											\$0
PE	\$1,070	\$1,338	\$400	\$500							\$3,308
PP											\$0
ROW											\$0
Totals	\$1,582	\$1,969	\$2,435	\$3,109	\$3,173	\$4,069	\$2,768	\$3,573	\$0	\$0	\$22,678

MD 295, Baltimore Washington Parkway



Source: Baltimore Metropolitan Council

MD 175, MD 295 to MD 170

TIP Id #	61-0603-45	Year of Operation	n/a
Agency	State Highway Administration	Project Type	Roadway widening
Project Category	Highway Capacity	Functional Class	Minor arterial
Conformity Status	Programmatically Conforming	Physical Data	2-4 lanes to 6-lane divided; 5.2 miles
CIP/CTP Page#	AA-8		

Description	Justification
This study will identify traffic flow improvements on MD 175 from MD 295 to MD 170, including a potential interchange at Reece Road. Bicycle and pedestrian accommodations will be provided where appropriate.	This project would address current and future congestion along MD 175 and will improve access to Fort Meade.

Section 1602 High Priority Projects

Phase	Previous Requests		Annual Element		Federal Funding Requests						Project Totals
	Previous Federal Funds	Previous Matching Funds	FY 2008 Federal Funds	FY 2008 Matching Funds	FY 2009 Federal Funds	FY 2009 Matching Funds	FY 2010 Federal Funds	FY 2010 Matching Funds	FY 11-12 Federal Funds	FY 11-12 Matching Funds	Estimated Project Total
CON											\$0
OTH											\$0
PE											\$0
PP	\$314	\$403	\$910	\$1,167	\$429	\$550	\$273	\$350			\$4,396
ROW											\$0
Totals	\$314	\$403	\$910	\$1,167	\$429	\$550	\$273	\$350	\$0	\$0	\$4,396

2008 - 2012 Transportation Improvement Program

State Highway Administration

Highway Capacity

US 50, John Hanson Highway - I-70 to MD 2

TIP Id #	61-0801-42	Year of Operation	2009
Agency	State Highway Administration	Project Type	New or extended roadways
Project Category	Highway Capacity	Functional Class	Principal arterial
Conformity Status	Exempt	Physical Data	NA
CIP/CTP Page#	AA-7		

Description	Justification
Study to investigate options for alleviating congestion on US 50 from MD 70 to MD 2 (north), including the Severn River/Pearl Harbor Memorial Bridge (1.7 miles)	The approaches to the US 50 Severn River/Pearl Harbor Memorial Bridge experience severe congestion, particularly the eastbound direction in the evening peak period.

National Highway System

Phase	Previous Requests		Annual Element		Federal Funding Requests						Project Totals
	Previous Federal Funds	Previous Matching Funds	FY 2008 Federal Funds	FY 2008 Matching Funds	FY 2009 Federal Funds	FY 2009 Matching Funds	FY 2010 Federal Funds	FY 2010 Matching Funds	FY 11-12 Federal Funds	FY 11-12 Matching Funds	Estimated Project Total
CON											\$0
OTH											\$0
PE											\$0
PP		\$100		\$500		\$400					\$1,000
ROW											\$0
Totals	\$0	\$100	\$0	\$500	\$0	\$400	\$0	\$0	\$0	\$0	\$1,000

Patuxent Research Refuge Road

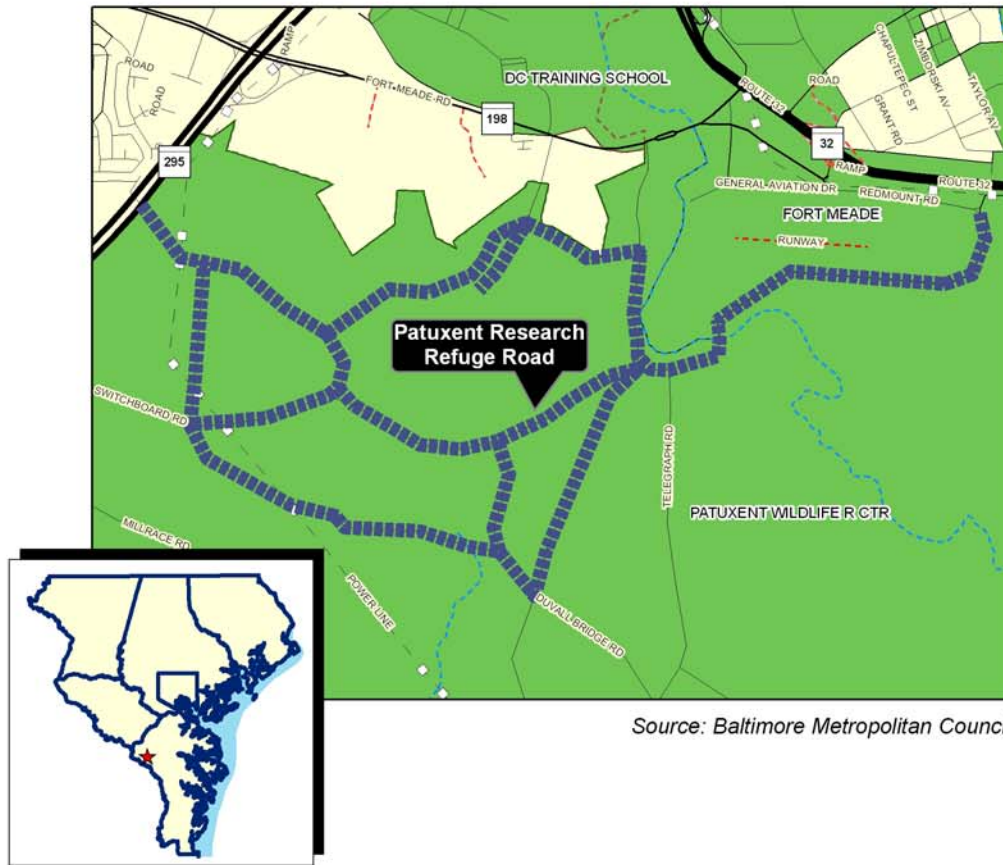
TIP Id #	61-0703-11	Year of Operation	2007
Agency	State Highway Administration	Project Type	Road resurfacing/rehabilitation
Project Category	Highway Preservation	Functional Class	Local
Conformity Status	Exempt	Physical Data	NA
CIP/CTP Page#	NA		

Description	Justification
Repair and resurfacing of roads on the North Track of the Patuxent Research Refuge.	Road conditions have deteriorated since the 8100 acres were transferred from Fort Meade to the refuge in 1991.

Section 1602 High Priority Projects

Phase	Previous Requests		Annual Element		Federal Funding Requests						Project Totals
	Previous Federal Funds	Previous Matching Funds	FY 2008 Federal Funds	FY 2008 Matching Funds	FY 2009 Federal Funds	FY 2009 Matching Funds	FY 2010 Federal Funds	FY 2010 Matching Funds	FY 11-12 Federal Funds	FY 11-12 Matching Funds	Estimated Project Total
CON			\$1,500	\$1,500							\$3,000
OTH											\$0
PE											\$0
PP											\$0
ROW											\$0
Totals	\$0	\$0	\$1,500	\$1,500	\$0	\$0	\$0	\$0	\$0	\$0	\$3,000

Patuxent Research Refuge Road



Source: Baltimore Metropolitan Council

State Highway Administration

Baltimore County

Greater Towson Area Traffic Study

TIP Id #	63-0701-29	Year of Operation	n/a
Agency	State Highway Administration	Project Type	Other
Project Category	Enhancement Program	Functional Class	NA
Conformity Status	Exempt	Physical Data	NA
CIP/CTP Page#	NA		

Description	Justification
Baltimore County will conduct a traffic study for the Greater Towson Area with support from SHA.	Preliminary scope for this project includes evaluating pedestrian access, local business access support, wayfinding signage, and parking in the Greater Towson Area. The outcome of the study will provide a guide for future action by Baltimore County and/or SHA.

Section 1602 High Priority Projects

Phase	Previous Requests		Annual Element		Federal Funding Requests						Project Totals
	Previous Federal Funds	Previous Matching Funds	FY 2008 Federal Funds	FY 2008 Matching Funds	FY 2009 Federal Funds	FY 2009 Matching Funds	FY 2010 Federal Funds	FY 2010 Matching Funds	FY 11-12 Federal Funds	FY 11-12 Matching Funds	Estimated Project Total
CON			\$160	\$40							\$200
OTH											\$0
PE											\$0
PP											\$0
ROW											\$0
Totals	\$0	\$0	\$160	\$40	\$0	\$0	\$0	\$0	\$0	\$0	\$200

2008 - 2012 Transportation Improvement Program

State Highway Administration

Highway Capacity

MD 43 Extended

TIP Id #	63-0107-42	Year of Operation	2008
Agency	State Highway Administration	Project Type	New or extended roadways
Project Category	Highway Capacity	Functional Class	Principal arterial
Conformity Status	Test	Physical Data	New 4-lane divided; 3.6 miles
CIP/CTP Page#	B-5		

Description	Justification
Constructed a partially access controlled highway between MD 150 and US 40. Sidewalks were included where appropriate. Wide outside curb lanes will accommodate bicycles.	Significant economic growth is planned for the Middle River Employment Center area that cannot be accommodated with the existing transportation network. In order for this development to occur as Baltimore County has planned, additional access was needed.

Surface Transportation Program

Phase	Previous Requests		Annual Element		Federal Funding Requests						Project Totals
	Previous Federal Funds	Previous Matching Funds	FY 2008 Federal Funds	FY 2008 Matching Funds	FY 2009 Federal Funds	FY 2009 Matching Funds	FY 2010 Federal Funds	FY 2010 Matching Funds	FY 11-12 Federal Funds	FY 11-12 Matching Funds	Estimated Project Total
CON	\$30,932	\$43,688									\$74,620
OTH	\$4,776	\$6,075	\$895	\$1,139							\$12,885
PE		\$1,956									\$1,956
PP		\$1,425									\$1,425
ROW		\$13,077		\$428							\$13,505
Totals	\$35,708	\$66,221	\$895	\$1,567	\$0	\$0	\$0	\$0	\$0	\$0	\$104,391

MD 45: Cavan Drive to Ridgely Road

TIP Id #	63-0501-42	Year of Operation	2009
Agency	State Highway Administration	Project Type	New or extended roadways
Project Category	Highway Capacity	Functional Class	Collectors, major or minor
Conformity Status	Not Exempt	Physical Data	1.1mile 4/5 lanes
CIP/CTP Page#	B-6		

Description	Justification
Widen MD 45 to provide a center turn lane from Cavan Drive to Ridgely Road. Project will include streetscape amenities and bicycle and pedestrian improvements where appropriate.	<p>This project will improve operations and safety as well as beautify this segment of MD 45. This project is in the Baltimore Regional Transportation Plan.</p> <p>* Could serve to improve conditions for bicycling and/or walking per approved local, regional and/or statewide bicycle and pedestrian planning documents.</p>

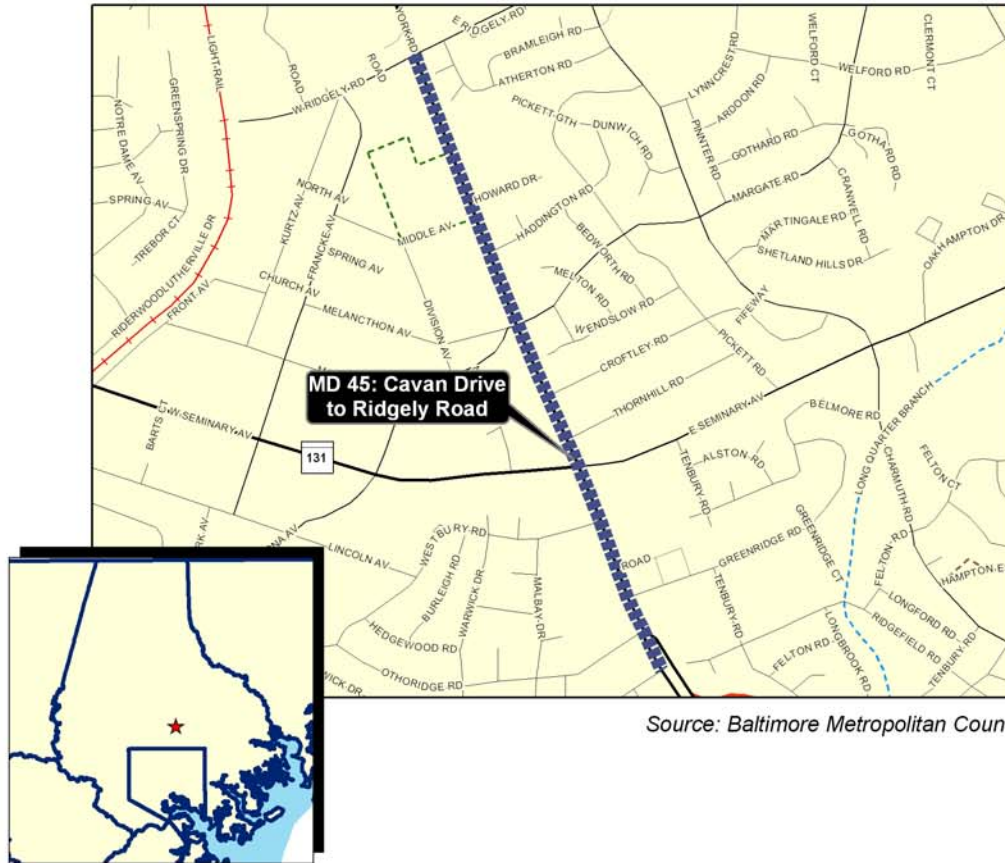
Section 1602 High Priority Projects

Phase	Previous Requests		Annual Element		Federal Funding Requests						Project Totals
	Previous Federal Funds	Previous Matching Funds	FY 2008 Federal Funds	FY 2008 Matching Funds	FY 2009 Federal Funds	FY 2009 Matching Funds	FY 2010 Federal Funds	FY 2010 Matching Funds	FY 11-12 Federal Funds	FY 11-12 Matching Funds	Estimated Project Total
CON	\$1,780	\$2,282	\$1,956	\$2,508	\$679	\$871					\$10,076
OTH											\$0
PE											\$0
PP											\$0
ROW											\$0
Totals	\$1,780	\$2,282	\$1,956	\$2,508	\$679	\$871	\$0	\$0	\$0	\$0	\$10,076

Surface Transportation Program

Phase	Previous Requests		Annual Element		Federal Funding Requests						Project Totals
	Previous Federal Funds	Previous Matching Funds	FY 2008 Federal Funds	FY 2008 Matching Funds	FY 2009 Federal Funds	FY 2009 Matching Funds	FY 2010 Federal Funds	FY 2010 Matching Funds	FY 11-12 Federal Funds	FY 11-12 Matching Funds	Estimated Project Total
CON	\$890	\$1,015	\$1,589	\$1,846	\$1,467	\$1,765					\$8,572
OTH	\$312	\$400	\$489	\$626	\$437	\$561					\$2,825
PE		\$2,094									\$2,094
PP											\$0
ROW	\$2,542	\$3,177									\$5,719
Totals	\$3,744	\$6,686	\$2,078	\$2,472	\$1,904	\$2,326	\$0	\$0	\$0	\$0	\$19,210

MD 45: Cavan Drive to Ridgely Road



Source: Baltimore Metropolitan Council

I-695, I-95 (SW) to MD 122

TIP Id #	63-0601-41	Year of Operation	n/a
Agency	State Highway Administration	Project Type	Roadway widening
Project Category	Highway Capacity	Functional Class	Interstate
Conformity Status	Test	Physical Data	6-lanes to 8-lanes; 5.7 miles
CIP/CTP Page#	B-7		

Description	Justification
Upgrade existing I-695 to an 8-lane freeway from I-95 to MD 122 (Security Boulevard).	This project would provide additional capacity and improve operations and safety on this segment of I-695.

Section 1602 High Priority Projects

Phase	Previous Requests		Annual Element		Federal Funding Requests						Project Totals
	Previous Federal Funds	Previous Matching Funds	FY 2008 Federal Funds	FY 2008 Matching Funds	FY 2009 Federal Funds	FY 2009 Matching Funds	FY 2010 Federal Funds	FY 2010 Matching Funds	FY 11-12 Federal Funds	FY 11-12 Matching Funds	Estimated Project Total
CON											\$0
OTH											\$0
PE											\$0
PP		\$1,426									\$1,426
ROW											\$0
Totals	\$0	\$1,426	\$0	\$0	\$0	\$0	\$0	\$0	\$0	\$0	\$1,426

2008 - 2012 Transportation Improvement Program

State Highway Administration

Highway Capacity

MD 140 from Garrison View Rd. to N. of Owings Mills Blvd.

TIP Id #	63-0802-41	Year of Operation	2010
Agency	State Highway Administration	Project Type	Roadway widening
Project Category	Highway Capacity	Functional Class	Principal arterial
Conformity Status	Exempt	Physical Data	NA
CIP/CTP Page#	B-11		

Description	Justification
Capacity and safety improvements to MD 140 from Garrison View Road to north of Owings Mills Boulevard. Bicycle and pedestrian improvements will be provided where appropriate (0.75 miles).	

National Highway System

Phase	Previous Requests		Annual Element		Federal Funding Requests						Project Totals
	Previous Federal Funds	Previous Matching Funds	FY 2008 Federal Funds	FY 2008 Matching Funds	FY 2009 Federal Funds	FY 2009 Matching Funds	FY 2010 Federal Funds	FY 2010 Matching Funds	FY 11-12 Federal Funds	FY 11-12 Matching Funds	Estimated Project Total
CON											\$0
OTH											\$0
PE		\$727		\$265		\$750		\$750			\$2,492
PP											\$0
ROW		\$100		\$6,900							\$7,000
Totals	\$0	\$827	\$0	\$7,165	\$0	\$750	\$0	\$750	\$0	\$0	\$9,492

2008 - 2012 Transportation Improvement Program

State Highway Administration

Highway Capacity

I-795 Northwest Expressway

TIP Id #	63-0803-46	Year of Operation	2015
Agency	State Highway Administration	Project Type	New interchange
Project Category	Highway Capacity	Functional Class	Interstate
Conformity Status	Programmatically Conforming	Physical Data	NA
CIP/CTP Page#	B-10		

Description	Justification
Study to develop interchange options at Dolfield Road.	This project would provide improved access to the planned growth corridor along Red Run Boulevard.

Section 5339 Capital Program (discretionary funds for capital projects)

Phase	Previous Requests		Annual Element		Federal Funding Requests						Project Totals
	Previous Federal Funds	Previous Matching Funds	FY 2008 Federal Funds	FY 2008 Matching Funds	FY 2009 Federal Funds	FY 2009 Matching Funds	FY 2010 Federal Funds	FY 2010 Matching Funds	FY 11-12 Federal Funds	FY 11-12 Matching Funds	Estimated Project Total
CON											\$0
OTH											\$0
PE											\$0
PP											\$0
ROW											\$0
Totals	\$0	\$0	\$0	\$0	\$0	\$0	\$0	\$0	\$0	\$0	\$0

Interstate Maintenance

Phase	Previous Requests		Annual Element		Federal Funding Requests						Project Totals
	Previous Federal Funds	Previous Matching Funds	FY 2008 Federal Funds	FY 2008 Matching Funds	FY 2009 Federal Funds	FY 2009 Matching Funds	FY 2010 Federal Funds	FY 2010 Matching Funds	FY 11-12 Federal Funds	FY 11-12 Matching Funds	Estimated Project Total
CON											\$0
OTH											\$0
PE											\$0
PP		\$100		\$500		\$1,000		\$850		\$150	\$2,600
ROW											\$0
Totals	\$0	\$100	\$0	\$500	\$0	\$1,000	\$0	\$850	\$0	\$150	\$2,600

2008 - 2012 Transportation Improvement Program

State Highway Administration

Highway Capacity

I-695, I-83 (JFX) to I-95

TIP Id #	63-9305-41	Year of Operation	n/a
Agency	State Highway Administration	Project Type	Roadway widening
Project Category	Highway Capacity	Functional Class	Interstate
Conformity Status	Test	Physical Data	6-lanes to 8-lanes; 11.4 miles
CIP/CTP Page#	B-8		

Description	Justification
Upgrade existing I-695 to an 8-lane freeway from I-83 (JFX) to I-95.	This project would provide additional capacity and improve operations and safety of this segment of I-695.

Interstate Maintenance

Phase	Previous Requests		Annual Element		Federal Funding Requests						Project Totals
	Previous Federal Funds	Previous Matching Funds	FY 2008 Federal Funds	FY 2008 Matching Funds	FY 2009 Federal Funds	FY 2009 Matching Funds	FY 2010 Federal Funds	FY 2010 Matching Funds	FY 11-12 Federal Funds	FY 11-12 Matching Funds	Estimated Project Total
CON											\$0
OTH											\$0
PE	\$51	\$73									\$124
PP	\$1,061	\$1,515									\$2,576
ROW											\$0
Totals	\$1,112	\$1,588	\$0	\$0	\$0	\$0	\$0	\$0	\$0	\$0	\$2,700

2008 - 2012 Transportation Improvement Program

State Highway Administration

Highway Preservation

I-695, Bridge at MD 139

TIP Id #	63-0801-13	Year of Operation	2010
Agency	State Highway Administration	Project Type	Bridge repair/deck replacement
Project Category	Highway Preservation	Functional Class	Interstate
Conformity Status	Test	Physical Data	NA
CIP/CTP Page#	B-9		

Description	Justification
Replace existing bridge at MD 139 (Charles Street). This is a breakout of TIP # 63-9305-41 (I-695, from I-83 to I-95).	The existing bridge is deteriorated and in need of replacement. The new bridge will be designed to accommodate the future widening of the Baltimore Beltway.

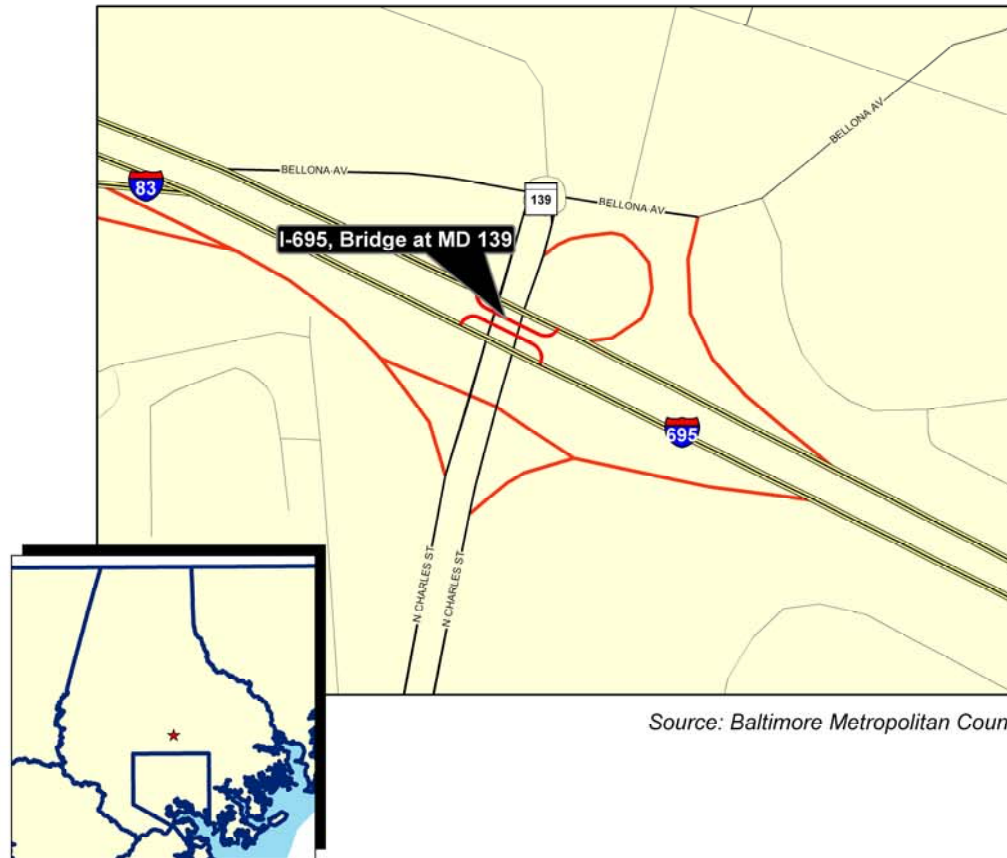
Section 1602 High Priority Projects

Phase	Previous Requests		Annual Element		Federal Funding Requests						Project Totals
	Previous Federal Funds	Previous Matching Funds	FY 2008 Federal Funds	FY 2008 Matching Funds	FY 2009 Federal Funds	FY 2009 Matching Funds	FY 2010 Federal Funds	FY 2010 Matching Funds	FY 11-12 Federal Funds	FY 11-12 Matching Funds	Estimated Project Total
CON											\$0
OTH											\$0
PE			\$3,480	\$982							\$4,462
PP											\$0
ROW											\$0
Totals	\$0	\$0	\$3,480	\$982	\$0	\$0	\$0	\$0	\$0	\$0	\$4,462

Interstate Maintenance

Phase	Previous Requests		Annual Element		Federal Funding Requests						Project Totals
	Previous Federal Funds	Previous Matching Funds	FY 2008 Federal Funds	FY 2008 Matching Funds	FY 2009 Federal Funds	FY 2009 Matching Funds	FY 2010 Federal Funds	FY 2010 Matching Funds	FY 11-12 Federal Funds	FY 11-12 Matching Funds	Estimated Project Total
CON											\$0
OTH											\$0
PE			\$740	\$317							\$1,057
PP											\$0
ROW											\$0
Totals	\$0	\$0	\$740	\$317	\$0	\$0	\$0	\$0	\$0	\$0	\$1,057

I-695, Bridge at MD 139



Source: Baltimore Metropolitan Council

Left blank intentionally

State Highway Administration

Carroll County

MD 30 Relocated, Hampstead Bypass

TIP Id #	64-0102-42	Year of Operation	2009
Agency	State Highway Administration	Project Type	New or extended roadways
Project Category	Highway Capacity	Functional Class	Principal arterial
Conformity Status	Not Exempt	Physical Data	New Roadway
CIP/CTP Page#	CL-1		

Description	Justification
Construct a new 2 lane limited access highway replacing existing MD 30 from MD 30 south of Hampstead at Wolf Hill Drive to MD 30 north of Hampstead at Brodbeck Road. Shoulders will accommodate bicycles.	Existing MD 30 is a primary state highway linking the greater Baltimore area with southern Pennsylvania. The proposed improvement will relieve existing traffic operation and capacity issues on MD 30 in the Town of Hampstead.

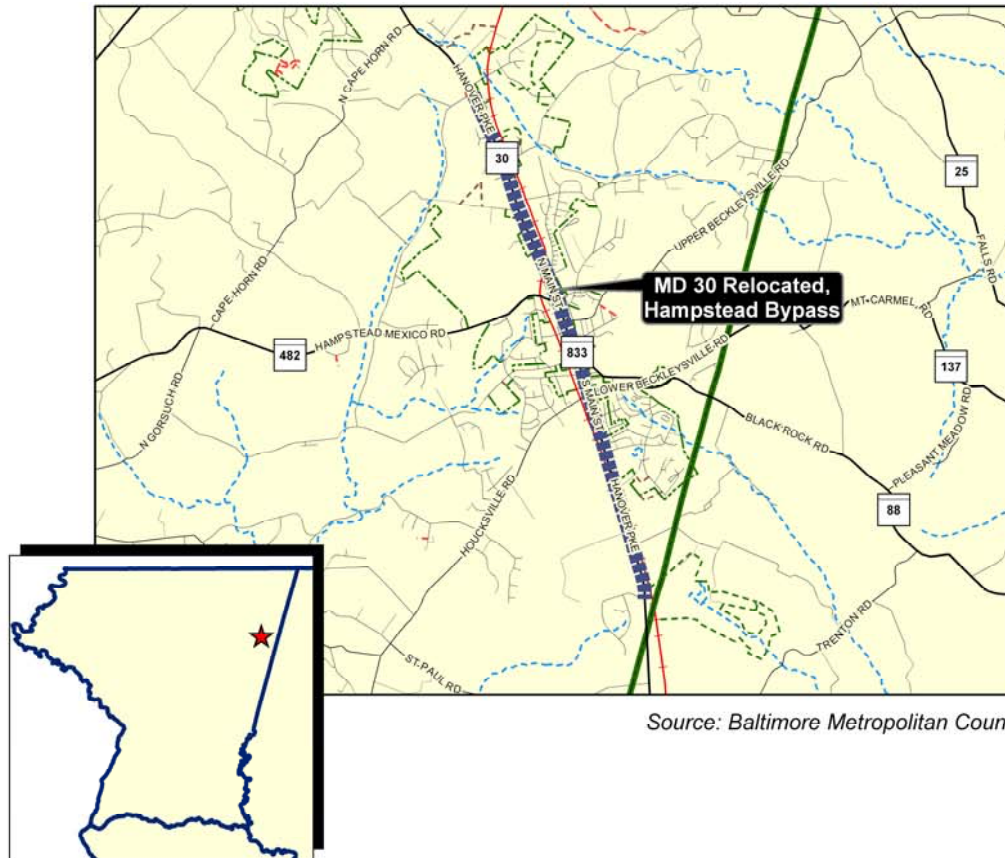
Section 1602 High Priority Projects

Phase	Previous Requests		Annual Element		Federal Funding Requests						Project Totals
	Previous Federal Funds	Previous Matching Funds	FY 2008 Federal Funds	FY 2008 Matching Funds	FY 2009 Federal Funds	FY 2009 Matching Funds	FY 2010 Federal Funds	FY 2010 Matching Funds	FY 11-12 Federal Funds	FY 11-12 Matching Funds	Estimated Project Total
CON	\$281	\$360	\$316	\$405	\$203	\$261					\$1,826
OTH											\$0
PE											\$0
PP											\$0
ROW											\$0
Totals	\$281	\$360	\$316	\$405	\$203	\$261	\$0	\$0	\$0	\$0	\$1,826

National Highway System

Phase	Previous Requests		Annual Element		Federal Funding Requests						Project Totals
	Previous Federal Funds	Previous Matching Funds	FY 2008 Federal Funds	FY 2008 Matching Funds	FY 2009 Federal Funds	FY 2009 Matching Funds	FY 2010 Federal Funds	FY 2010 Matching Funds	FY 11-12 Federal Funds	FY 11-12 Matching Funds	Estimated Project Total
CON	\$13,282	\$16,216	\$14,233	\$17,389	\$8,999	\$12,744	\$51	\$66	\$155	\$198	\$83,333
OTH	\$1,390	\$1,846	\$1,745	\$2,225	\$931	\$1,194					\$9,331
PE	\$4,685	\$7,603									\$12,288
PP											\$0
ROW		\$20,506		\$6,123	\$1,194						\$27,823
Totals	\$19,357	\$46,171	\$15,978	\$25,737	\$11,124	\$13,938	\$51	\$66	\$155	\$198	\$132,775

MD 30 Relocated, Hampstead Bypass



Source: Baltimore Metropolitan Council

MD 140, Baltimore Boulevard

TIP Id #	64-0801-41	Year of Operation	2012
Agency	State Highway Administration	Project Type	Roadway widening
Project Category	Highway Capacity	Functional Class	Principal arterial
Conformity Status	Exempt	Physical Data	NA
CIP/CTP Page#	CL-3		

Description	Justification
Study to consider capacity improvements along MD 140 between Market Street and Sullivan Road through Westminster. Bicycle and pedestrian facilities will be provided (2.46 miles)	This project would relieve existing congestion and provide additional capacity for planned growth and economic development within the Priority Funding Area.

National Highway System

Phase	Previous Requests		Annual Element		Federal Funding Requests						Project Totals
	Previous Federal Funds	Previous Matching Funds	FY 2008 Federal Funds	FY 2008 Matching Funds	FY 2009 Federal Funds	FY 2009 Matching Funds	FY 2010 Federal Funds	FY 2010 Matching Funds	FY 11-12 Federal Funds	FY 11-12 Matching Funds	Estimated Project Total
CON											\$0
OTH											\$0
PE											\$0
PP		\$1,271		\$313							\$1,584
ROW											\$0
Totals	\$0	\$1,271	\$0	\$313	\$0	\$0	\$0	\$0	\$0	\$0	\$1,584

2008 - 2012 Transportation Improvement Program

State Highway Administration

Highway Preservation

MD 26, Liberty Road

TIP Id #	64-0802-19	Year of Operation	2011
Agency	State Highway Administration	Project Type	Other
Project Category	Highway Preservation	Functional Class	Minor arterial
Conformity Status	Exempt	Physical Data	NA
CIP/CTP Page#	CL-4		

Description	Justification
Project to provide access, operational, safety and streetscape improvements along the MD 26 corridor between the Liberty Reservoir and MD 32 (2.55 miles). Bicycle and pedestrian facilities will be provided.	This project would improve operations and safety along this segment of MD 26.

Section 5339 Capital Program (discretionary funds for capital projects)

Phase	Previous Requests		Annual Element		Federal Funding Requests						Project Totals
	Previous Federal Funds	Previous Matching Funds	FY 2008 Federal Funds	FY 2008 Matching Funds	FY 2009 Federal Funds	FY 2009 Matching Funds	FY 2010 Federal Funds	FY 2010 Matching Funds	FY 11-12 Federal Funds	FY 11-12 Matching Funds	Estimated Project Total
CON											\$0
OTH											\$0
PE		\$452		\$500		\$648					\$1,600
PP	\$197	\$282									\$479
ROW											\$0
Totals	\$197	\$734	\$0	\$500	\$0	\$648	\$0	\$0	\$0	\$0	\$2,079

State Highway Administration

Harford County

Perryman Access Study

TIP Id #	65-0801-42	Year of Operation	2012
Agency	State Highway Administration	Project Type	New or extended roadways
Project Category	Highway Capacity	Functional Class	Collectors, major or minor
Conformity Status	Programmatically Conforming	Physical Data	NA
CIP/CTP Page#	H-4		

Description	Justification
Study to provide improved access from the Perryman Peninsula to the state road network. Sidewalks will be provided where appropriate. Shoulders will accommodate bicycles. (BRAC related)	This project would improve access to the planned growth area of the Perryman Peninsula and improve the safety and operation of the road network. This project includes the transfer of MD 159 to the County after construction.

Section 5339 Capital Program (discretionary funds for capital projects)

Phase	Previous Requests		Annual Element		Federal Funding Requests						Project Totals
	Previous Federal Funds	Previous Matching Funds	FY 2008 Federal Funds	FY 2008 Matching Funds	FY 2009 Federal Funds	FY 2009 Matching Funds	FY 2010 Federal Funds	FY 2010 Matching Funds	FY 11-12 Federal Funds	FY 11-12 Matching Funds	Estimated Project Total
CON											\$0
OTH											\$0
PE		\$20		\$180							\$200
PP	\$158	\$225									\$383
ROW											\$0
Totals	\$158	\$245	\$0	\$180	\$0	\$0	\$0	\$0	\$0	\$0	\$583

US 40, Pulaski Highway

TIP Id #	65-0803-46	Year of Operation	2012
Agency	State Highway Administration	Project Type	New interchange
Project Category	Highway Capacity	Functional Class	Principal arterial
Conformity Status	Exempt	Physical Data	NA
CIP/CTP Page#	H-7		

Description	Justification
Study to construct interchange improvements to address operational issues at MD 715. (BRAC related)	This project will improve safety and operations along US 40. It will also improve access to the town of Aberdeen, Aberdeen Proving Ground and industrial parks in the area.

Section 1602 High Priority Projects

Phase	Previous Requests		Annual Element		Federal Funding Requests						Project Totals
	Previous Federal Funds	Previous Matching Funds	FY 2008 Federal Funds	FY 2008 Matching Funds	FY 2009 Federal Funds	FY 2009 Matching Funds	FY 2010 Federal Funds	FY 2010 Matching Funds	FY 11-12 Federal Funds	FY 11-12 Matching Funds	Estimated Project Total
CON			\$2,670	\$3,299	\$2,665	\$3,293	\$2,665	\$3,293			\$17,885
OTH											\$0
PE		\$253		\$200		\$753					\$1,206
PP											\$0
ROW											\$0
Totals	\$0	\$253	\$2,670	\$3,499	\$2,665	\$4,046	\$2,665	\$3,293	\$0	\$0	\$19,091

US 40, Pulaski Highway

TIP Id #	65-0802-11	Year of Operation	2008
Agency	State Highway Administration	Project Type	Road resurfacing/rehabilitation
Project Category	Highway Preservation	Functional Class	Principal arterial
Conformity Status	Exempt	Physical Data	NA
CIP/CTP Page#	H-3		

Description	Justification
Improvements to US 40 from MD 152 to MD 24 overpass (1.90 miles). Project will include roadway resurfacing and replacement of the median jersey barrier with an aesthetically treated divider, landscaping, bicycle and pedestrian improvements. (BRAC related)	This project is part of the overall US 40 streetscape improvements in Harford County. This project will also improve safety and operational issues.

National Highway System

Phase	Previous Requests		Annual Element		Federal Funding Requests						Project Totals
	Previous Federal Funds	Previous Matching Funds	FY 2008 Federal Funds	FY 2008 Matching Funds	FY 2009 Federal Funds	FY 2009 Matching Funds	FY 2010 Federal Funds	FY 2010 Matching Funds	FY 11-12 Federal Funds	FY 11-12 Matching Funds	Estimated Project Total
CON	\$6,127	\$7,216	\$1,841	\$2,136							\$17,320
OTH	\$307	\$384									\$691
PE		\$1,030									\$1,030
PP											\$0
ROW											\$0
Totals	\$6,434	\$8,630	\$1,841	\$2,136	\$0	\$0	\$0	\$0	\$0	\$0	\$19,041

State Highway Administration

Howard County

MD 32, Patuxent Freeway

TIP Id #	66-0501-46	Year of Operation	2009
Agency	State Highway Administration	Project Type	New interchange
Project Category	Highway Capacity	Functional Class	Principal arterial
Conformity Status	Not Exempt	Physical Data	New Interchange
CIP/CTP Page#	HO-1		

Description	Justification
Construct a new interchange at Burntwoods Road.	This project will improve safety and operations and relieve congestion in the heavily traveled corridor.

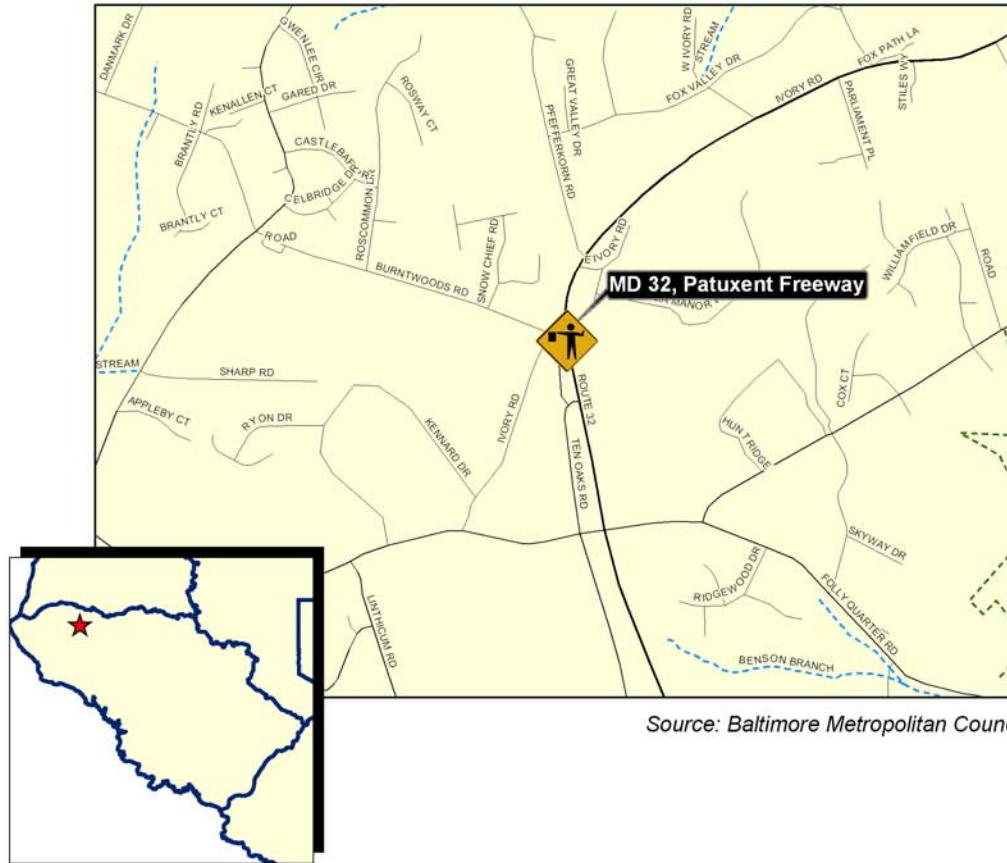
Section 1602 High Priority Projects

Phase	Previous Requests		Annual Element		Federal Funding Requests						Project Totals
	Previous Federal Funds	Previous Matching Funds	FY 2008 Federal Funds	FY 2008 Matching Funds	FY 2009 Federal Funds	FY 2009 Matching Funds	FY 2010 Federal Funds	FY 2010 Matching Funds	FY 11-12 Federal Funds	FY 11-12 Matching Funds	Estimated Project Total
CON	\$205	\$262	\$1,437	\$1,843	\$1,398	\$1,793					\$6,938
OTH											\$0
PE											\$0
PP											\$0
ROW											\$0
Totals	\$205	\$262	\$1,437	\$1,843	\$1,398	\$1,793	\$0	\$0	\$0	\$0	\$6,938

National Highway System

Phase	Previous Requests		Annual Element		Federal Funding Requests						Project Totals
	Previous Federal Funds	Previous Matching Funds	FY 2008 Federal Funds	FY 2008 Matching Funds	FY 2009 Federal Funds	FY 2009 Matching Funds	FY 2010 Federal Funds	FY 2010 Matching Funds	FY 11-12 Federal Funds	FY 11-12 Matching Funds	Estimated Project Total
CON	\$1,600	\$2,053	\$8,954	\$11,479	\$7,077	\$9,073					\$40,236
OTH											\$0
PE		\$2,228									\$2,228
PP											\$0
ROW	\$3,951	\$5,065	\$194	\$249							\$9,459
Totals	\$5,551	\$9,346	\$9,148	\$11,728	\$7,077	\$9,073	\$0	\$0	\$0	\$0	\$51,923

MD 32, Patuxent Freeway



Source: Baltimore Metropolitan Council

I-70, Baltimore National Pike

TIP Id #	66-0801-41	Year of Operation	n/a
Agency	State Highway Administration	Project Type	Roadway widening
Project Category	Highway Capacity	Functional Class	Interstate
Conformity Status	Not Exempt	Physical Data	NA
CIP/CTP Page#	HO-5		

Description	Justification
Study to address current future capacity needs on I-70 between US 40 and US 29 (6.0 miles)	This project would ease increasing congestion and improve safety along this segment of I-70.

Interstate Maintenance

Phase	Previous Requests		Annual Element		Federal Funding Requests						Project Totals
	Previous Federal Funds	Previous Matching Funds	FY 2008 Federal Funds	FY 2008 Matching Funds	FY 2009 Federal Funds	FY 2009 Matching Funds	FY 2010 Federal Funds	FY 2010 Matching Funds	FY 11-12 Federal Funds	FY 11-12 Matching Funds	Estimated Project Total
CON											\$0
OTH											\$0
PE											\$0
PP		\$200		\$700		\$1,100		\$1,000			\$3,000
ROW											\$0
Totals	\$0	\$200	\$0	\$700	\$0	\$1,100	\$0	\$1,000	\$0	\$0	\$3,000

MD 32, Patuxent Freeway

TIP Id #	66-0802-42	Year of Operation	2012
Agency	State Highway Administration	Project Type	New or extended roadways
Project Category	Highway Capacity	Functional Class	Principal arterial
Conformity Status	Exempt	Physical Data	NA
CIP/CTP Page#	HO-2		

Description	Justification
Construct access management improvements by relocating private driveways from MD 32 to Wellworth Way, a local road.	This project will improve safety and operations by removing direct private driveway access to MD 32.

Section 5339 Capital Program (discretionary funds for capital projects)

Phase	Previous Requests		Annual Element		Federal Funding Requests						Project Totals
	Previous Federal Funds	Previous Matching Funds	FY 2008 Federal Funds	FY 2008 Matching Funds	FY 2009 Federal Funds	FY 2009 Matching Funds	FY 2010 Federal Funds	FY 2010 Matching Funds	FY 11-12 Federal Funds	FY 11-12 Matching Funds	Estimated Project Total
CON						\$636		\$2,244		\$2,670	\$5,550
OTH											\$0
PE		\$100		\$300		\$500					\$900
PP											\$0
ROW				\$300		\$300					\$600
Totals	\$0	\$100	\$0	\$600	\$0	\$1,436	\$0	\$2,244	\$0	\$2,670	\$7,050

MD 32, Patuxent Freeway

TIP Id #	66-0803-46	Year of Operation	2012
Agency	State Highway Administration	Project Type	New interchange
Project Category	Highway Capacity	Functional Class	Principal arterial
Conformity Status	Not Exempt	Physical Data	NA
CIP/CTP Page#	HO-1		

Description	Justification
Construct a new interchange at Linden Church Road.	This project will improve safety and operations and relieve congestion in the heavily traveled corridor.

Section 5339 Capital Program (discretionary funds for capital projects)

Phase	Previous Requests		Annual Element		Federal Funding Requests						Project Totals
	Previous Federal Funds	Previous Matching Funds	FY 2008 Federal Funds	FY 2008 Matching Funds	FY 2009 Federal Funds	FY 2009 Matching Funds	FY 2010 Federal Funds	FY 2010 Matching Funds	FY 11-12 Federal Funds	FY 11-12 Matching Funds	Estimated Project Total
CON										\$13,092	\$13,092
OTH											\$0
PE		\$77		\$1,000		\$1,000		\$1,000			\$3,077
PP											\$0
ROW						\$220		\$202			\$422
Totals	\$0	\$77	\$0	\$1,000	\$0	\$1,220	\$0	\$1,202	\$0	\$13,092	\$16,591

US 1, Washington Boulevard

TIP Id #	66-0501-19	Year of Operation	n/a
Agency	State Highway Administration	Project Type	Other
Project Category	Highway Preservation	Functional Class	Principal arterial
Conformity Status	Exempt	Physical Data	11.0 miles / 4-lanes
CIP/CTP Page#	HO-6		

Description	Justification
Study of potential improvements along the US 1 corridor from the Prince George's County Line to the Baltimore County Line, including potential interchange improvements at MD 175, Guilford and Corridor Roads.	Howard County rezoned the entire US 1 corridor and completed a Corridor Revitalization Study which identified several needed improvements along US 1. This study will address the impacts of the rezoning and the Study on the US 1 corridor.

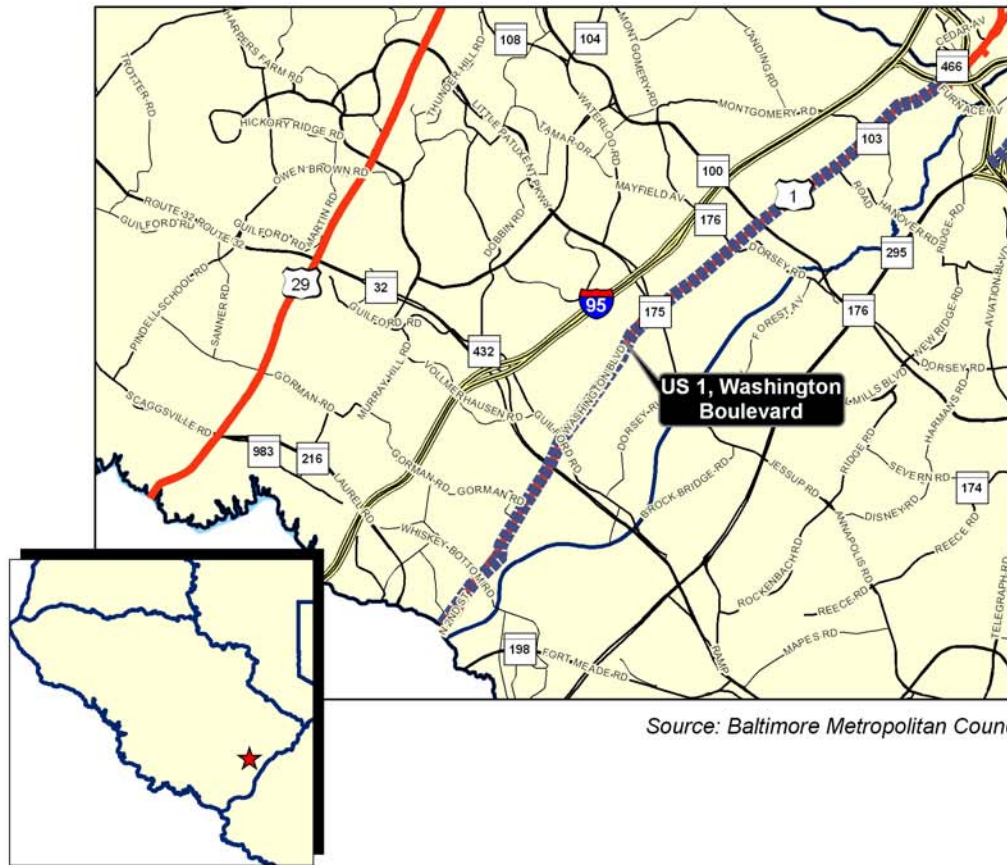
Section 1602 High Priority Projects

Phase	Previous Requests		Annual Element		Federal Funding Requests						Project Totals
	Previous Federal Funds	Previous Matching Funds	FY 2008 Federal Funds	FY 2008 Matching Funds	FY 2009 Federal Funds	FY 2009 Matching Funds	FY 2010 Federal Funds	FY 2010 Matching Funds	FY 11-12 Federal Funds	FY 11-12 Matching Funds	Estimated Project Total
CON											\$0
OTH											\$0
PE											\$0
PP											\$0
ROW											\$0
Totals	\$0	\$0	\$0	\$0	\$0	\$0	\$0	\$0	\$0	\$0	\$0

Surface Transportation Program

Phase	Previous Requests		Annual Element		Federal Funding Requests						Project Totals
	Previous Federal Funds	Previous Matching Funds	FY 2008 Federal Funds	FY 2008 Matching Funds	FY 2009 Federal Funds	FY 2009 Matching Funds	FY 2010 Federal Funds	FY 2010 Matching Funds	FY 11-12 Federal Funds	FY 11-12 Matching Funds	Estimated Project Total
CON											\$0
OTH											\$0
PE											\$0
PP	\$290	\$363	\$240	\$300	\$200	\$250	\$200	\$250	\$70	\$87	\$2,250
ROW											\$0
Totals	\$290	\$363	\$240	\$300	\$200	\$250	\$200	\$250	\$70	\$87	\$2,250

US 1, Washington Boulevard



State Highway Administration

Regional

Areawide Enhancement Projects

TIP Id #	60-9903-29	Year of Operation	Ongoing
Agency	State Highway Administration	Project Type	Other
Project Category	Enhancement Program	Functional Class	NA
Conformity Status	Exempt	Physical Data	NA
CIP/CTP Page#	NA		

Description	Justification
Enhancement Program projects include: pedestrian/bicycle facilities; acquisition of scenic easements and historic sites; scenic/historic highway programs; landscaping/beautification; historic preservation; rehabilitation/operation of historic transportation facilities, including railroad facilities and canals; preservation of abandoned railway corridors; archeological planning/research; and mitigation of water pollution due to highway runoff.	Transportation enhancements are projects which add community and environmental value to the transportation system.

Enhancement Funds under STP

Phase	Previous Requests		Annual Element		Federal Funding Requests						Project Totals
	Previous Federal Funds	Previous Matching Funds	FY 2008 Federal Funds	FY 2008 Matching Funds	FY 2009 Federal Funds	FY 2009 Matching Funds	FY 2010 Federal Funds	FY 2010 Matching Funds	FY 11-12 Federal Funds	FY 11-12 Matching Funds	Estimated Project Total
CON	\$43,200	\$10,800	\$10,400	\$2,600	\$10,400	\$2,600	\$20,800	\$5,200			\$106,000
OTH											\$0
PE											\$0
PP											\$0
ROW											\$0
Totals	\$43,200	\$10,800	\$10,400	\$2,600	\$10,400	\$2,600	\$20,800	\$5,200	\$0	\$0	\$106,000

Areawide Recreational Trails Program

TIP Id #	60-0101-38	Year of Operation	Ongoing
Agency	State Highway Administration	Project Type	Environmental other
Project Category	Environmental/Safety	Functional Class	NA
Conformity Status	Exempt	Physical Data	NA
CIP/CTP Page#	NA		

Description	Justification
The Recreational Trails Program is intended to develop and maintain recreational trails for motorized and nonmotorized recreational trail users. It includes projects that provide for the redesign, reconstruction, non-routine maintenance, or relocation of recreational trails to benefit the natural environment.	These projects will provide environmental enhancement, protection and safety related to the use of recreational trails.

Recreational Trails Program

Phase	Previous Requests		Annual Element		Federal Funding Requests						Project Totals
	Previous Federal Funds	Previous Matching Funds	FY 2008 Federal Funds	FY 2008 Matching Funds	FY 2009 Federal Funds	FY 2009 Matching Funds	FY 2010 Federal Funds	FY 2010 Matching Funds	FY 11-12 Federal Funds	FY 11-12 Matching Funds	Estimated Project Total
CON	\$880	\$220	\$880	\$220	\$960	\$240	\$960	\$240	\$960	\$240	\$5,800
OTH											\$0
PE											\$0
PP											\$0
ROW											\$0
Totals	\$880	\$220	\$880	\$220	\$960	\$240	\$960	\$240	\$960	\$240	\$5,800

Areawide Environmental Projects

TIP Id #	60-9506-38	Year of Operation	Ongoing
Agency	State Highway Administration	Project Type	Environmental other
Project Category	Environmental/Safety	Functional Class	NA
Conformity Status	Exempt	Physical Data	NA
CIP/CTP Page#	NA		

Description	Justification
There are non-capacity improvements which include projects dealing with noise abatement, wetlands, reforestation, landscape planting, scenic beautification, and pedestrian or bicycle facilities.	Will restore important wetlands, enhance the surrounding environment and community, and reduce noise impacts.

National Highway System

Phase	Previous Requests		Annual Element		Federal Funding Requests						Project Totals
	Previous Federal Funds	Previous Matching Funds	FY 2008 Federal Funds	FY 2008 Matching Funds	FY 2009 Federal Funds	FY 2009 Matching Funds	FY 2010 Federal Funds	FY 2010 Matching Funds	FY 11-12 Federal Funds	FY 11-12 Matching Funds	Estimated Project Total
CON	\$3,200	\$800	\$1,600	\$400	\$1,600	\$400	\$1,600	\$400			\$10,000
OTH											\$0
PE											\$0
PP											\$0
ROW											\$0
Totals	\$3,200	\$800	\$1,600	\$400	\$1,600	\$400	\$1,600	\$400	\$0	\$0	\$10,000

Surface Transportation Program

Phase	Previous Requests		Annual Element		Federal Funding Requests						Project Totals
	Previous Federal Funds	Previous Matching Funds	FY 2008 Federal Funds	FY 2008 Matching Funds	FY 2009 Federal Funds	FY 2009 Matching Funds	FY 2010 Federal Funds	FY 2010 Matching Funds	FY 11-12 Federal Funds	FY 11-12 Matching Funds	Estimated Project Total
CON	\$4,800	\$1,200	\$2,400	\$600	\$2,400	\$600	\$4,800	\$1,200			\$18,000
OTH											\$0
PE											\$0
PP											\$0
ROW											\$0
Totals	\$4,800	\$1,200	\$2,400	\$600	\$2,400	\$600	\$4,800	\$1,200	\$0	\$0	\$18,000

Left blank intentionally

Areawide Congestion Management

TIP Id #	60-9504-04	Year of Operation	Ongoing
Agency	State Highway Administration	Project Type	Traffic engineering
Project Category	Emission Reduction Strategy	Functional Class	NA
Conformity Status	Exempt	Physical Data	NA
CIP/CTP Page#	NA		

Description	Justification
<p>These improvements include the employment of variable message signs, video for traffic management (CCTV), traffic movement detectors, signal system coordination and remote timing, permanent congestion monitoring systems employed by the CHART program, deployment of local jurisdiction intelligent transportation system (ITS) projects, and the development of park and ride facilities.</p>	<p>These projects will improve safety and traffic flow operations on the existing highway system without major new construction. These projects will also save motorists time by allowing them to avoid traffic congestion. Some of the projects will reduce congestion through the use of ITS technology innovations in communication, advanced traffic management, traveler information, etc.</p> <p>*Supports regional M&O initiatives.</p>

Areawide Congestion Management

TIP Id #	60-9504-04	Year of Operation	Ongoing
Agency	State Highway Administration	Project Type	Traffic engineering
Project Category	Emission Reduction Strategy	Functional Class	NA
Conformity Status	Exempt	Physical Data	NA
CIP/CTP Page#	NA		

Description	Justification
<p>These improvements include the employment of variable message signs, video for traffic management (CCTV), traffic movement detectors, signal system coordination and remote timing, permanent congestion monitoring systems employed by the CHART program, deployment of local jurisdiction intelligent transportation system (ITS) projects, and the development of park and ride facilities.</p>	<p>These projects will improve safety and traffic flow operations on the existing highway system without major new construction. These projects will also save motorists time by allowing them to avoid traffic congestion. Some of the projects will reduce congestion through the use of ITS technology innovations in communication, advanced traffic management, traveler information, etc.</p> <p>*Supports regional M&O initiatives.</p>

Congestion Mitigation and Air Quality

Phase	Previous Requests		Annual Element		Federal Funding Requests						Project Totals
	Previous Federal Funds	Previous Matching Funds	FY 2008 Federal Funds	FY 2008 Matching Funds	FY 2009 Federal Funds	FY 2009 Matching Funds	FY 2010 Federal Funds	FY 2010 Matching Funds	FY 11-12 Federal Funds	FY 11-12 Matching Funds	Estimated Project Total
CON	\$24,800	\$6,200	\$10,400	\$2,600	\$10,400	\$2,600	\$28,000	\$7,000			\$92,000
OTH											\$0
PE											\$0
PP											\$0
ROW											\$0
Totals	\$24,800	\$6,200	\$10,400	\$2,600	\$10,400	\$2,600	\$28,000	\$7,000	\$0	\$0	\$92,000

Surface Transportation Program

Phase	Previous Requests		Annual Element		Federal Funding Requests						Project Totals
	Previous Federal Funds	Previous Matching Funds	FY 2008 Federal Funds	FY 2008 Matching Funds	FY 2009 Federal Funds	FY 2009 Matching Funds	FY 2010 Federal Funds	FY 2010 Matching Funds	FY 11-12 Federal Funds	FY 11-12 Matching Funds	Estimated Project Total
CON	\$40,000	\$10,000	\$20,000	\$5,000	\$20,000	\$5,000	\$48,000	\$12,000			\$160,000
OTH											\$0
PE											\$0
PP											\$0
ROW											\$0
Totals	\$40,000	\$10,000	\$20,000	\$5,000	\$20,000	\$5,000	\$48,000	\$12,000	\$0	\$0	\$160,000

Areawide Safety And Spot Improvements

TIP Id #	60-9508-19	Year of Operation	Ongoing
Agency	State Highway Administration	Project Type	Other
Project Category	Highway Preservation	Functional Class	NA
Conformity Status	Exempt	Physical Data	NA
CIP/CTP Page#	NA		

Description	Justification
These are non-capacity highway improvements which include projects dealing with bypass lanes, acceleration and deceleration lanes, turn lanes, rail crossings, safety improvements, pavement markers, and roundabouts. Other improvements such as slope repairs, drainage improvements, and joint sealings may be included incidental to other safety improvements.	Will improve safety and the flow of traffic, thereby reducing congestion and queuing.

Section 1602 High Priority Projects

Phase	Previous Requests		Annual Element		Federal Funding Requests						Project Totals
	Previous Federal Funds	Previous Matching Funds	FY 2008 Federal Funds	FY 2008 Matching Funds	FY 2009 Federal Funds	FY 2009 Matching Funds	FY 2010 Federal Funds	FY 2010 Matching Funds	FY 11-12 Federal Funds	FY 11-12 Matching Funds	Estimated Project Total
CON	\$800	\$200									\$1,000
OTH											\$0
PE											\$0
PP											\$0
ROW											\$0
Totals	\$800	\$200	\$0	\$0	\$0	\$0	\$0	\$0	\$0	\$0	\$1,000

Interstate Maintenance

Phase	Previous Requests		Annual Element		Federal Funding Requests						Project Totals
	Previous Federal Funds	Previous Matching Funds	FY 2008 Federal Funds	FY 2008 Matching Funds	FY 2009 Federal Funds	FY 2009 Matching Funds	FY 2010 Federal Funds	FY 2010 Matching Funds	FY 11-12 Federal Funds	FY 11-12 Matching Funds	Estimated Project Total
CON	\$3,200	\$800	\$1,600	\$400	\$1,600	\$400	\$8,000	\$2,000			\$18,000
OTH											\$0
PE											\$0
PP											\$0
ROW											\$0
Totals	\$3,200	\$800	\$1,600	\$400	\$1,600	\$400	\$8,000	\$2,000	\$0	\$0	\$18,000

National Highway System

Phase	Previous Requests		Annual Element		Federal Funding Requests						Project Totals
	Previous Federal Funds	Previous Matching Funds	FY 2008 Federal Funds	FY 2008 Matching Funds	FY 2009 Federal Funds	FY 2009 Matching Funds	FY 2010 Federal Funds	FY 2010 Matching Funds	FY 11-12 Federal Funds	FY 11-12 Matching Funds	Estimated Project Total
CON	\$3,200	\$800	\$1,600	\$400	\$1,600	\$400	\$8,000	\$2,000			\$18,000
OTH											\$0
PE											\$0
PP											\$0
ROW											\$0
Totals	\$3,200	\$800	\$1,600	\$400	\$1,600	\$400	\$8,000	\$2,000	\$0	\$0	\$18,000

Surface Transportation Program

Phase	Previous Requests		Annual Element		Federal Funding Requests						Project Totals
	Previous Federal Funds	Previous Matching Funds	FY 2008 Federal Funds	FY 2008 Matching Funds	FY 2009 Federal Funds	FY 2009 Matching Funds	FY 2010 Federal Funds	FY 2010 Matching Funds	FY 11-12 Federal Funds	FY 11-12 Matching Funds	Estimated Project Total
CON	\$36,000	\$9,000	\$20,000	\$5,000	\$16,000	\$4,000	\$40,000	\$10,000			\$140,000
OTH											\$0
PE											\$0
PP											\$0
ROW											\$0
Totals	\$36,000	\$9,000	\$20,000	\$5,000	\$16,000	\$4,000	\$40,000	\$10,000	\$0	\$0	\$140,000

Areawide Urban Reconstruction

TIP Id #	60-9511-19	Year of Operation	Ongoing
Agency	State Highway Administration	Project Type	Other
Project Category	Highway Preservation	Functional Class	NA
Conformity Status	Exempt	Physical Data	NA
CIP/CTP Page#	NA		

Description	Justification
These are non-capacity highway improvements which include projects dealing with drainage, curb and gutter, pavement milling and resurfacing, streetscape, signs, and markings and lighting improvements.	Will improve safety and the flow of traffic, thereby reducing delay, queuing and congestion. This will also enhance the surrounding environment and community.

National Highway System

Phase	Previous Requests		Annual Element		Federal Funding Requests						Project Totals
	Previous Federal Funds	Previous Matching Funds	FY 2008 Federal Funds	FY 2008 Matching Funds	FY 2009 Federal Funds	FY 2009 Matching Funds	FY 2010 Federal Funds	FY 2010 Matching Funds	FY 11-12 Federal Funds	FY 11-12 Matching Funds	Estimated Project Total
CON	\$3,200	\$800	\$1,600	\$400	\$1,600	\$400	\$9,600	\$2,400			\$20,000
OTH											\$0
PE											\$0
PP											\$0
ROW											\$0
Totals	\$3,200	\$800	\$1,600	\$400	\$1,600	\$400	\$9,600	\$2,400	\$0	\$0	\$20,000

Surface Transportation Program

Phase	Previous Requests		Annual Element		Federal Funding Requests						Project Totals
	Previous Federal Funds	Previous Matching Funds	FY 2008 Federal Funds	FY 2008 Matching Funds	FY 2009 Federal Funds	FY 2009 Matching Funds	FY 2010 Federal Funds	FY 2010 Matching Funds	FY 11-12 Federal Funds	FY 11-12 Matching Funds	Estimated Project Total
CON	\$9,600	\$2,400	\$4,800	\$1,200	\$4,800	\$1,200	\$14,400	\$3,600			\$42,000
OTH	\$1,600	\$400	\$800	\$200	\$800	\$200	\$1,600	\$400			\$6,000
PE											\$0
PP											\$0
ROW											\$0
Totals	\$11,200	\$2,800	\$5,600	\$1,400	\$5,600	\$1,400	\$16,000	\$4,000	\$0	\$0	\$48,000

Left blank intentionally

Areawide Bridge Replacement And Rehabilitation

TIP Id #	60-9310-13	Year of Operation	Ongoing
Agency	State Highway Administration	Project Type	Bridge repair/deck replacement
Project Category	Highway Preservation	Functional Class	NA
Conformity Status	Exempt	Physical Data	NA
CIP/CTP Page#	NA		

Description	Justification
These are non-capacity improvements which include structural replacements, deck rehabilitation, superstructure replacements, parapet reconstruction, cleaning and painting, and general maintenance on various state owned bridges as needed in Anne Arundel, Baltimore, Carroll, Harford and Howard counties. A portion of this project may be funded using STP for cleaning and painting.	Will preserve the existing structures, increase safety, and improve highway beautification.

Bridge Replacement and Rehabilitation

Phase	Previous Requests		Annual Element		Federal Funding Requests						Project Totals
	Previous Federal Funds	Previous Matching Funds	FY 2008 Federal Funds	FY 2008 Matching Funds	FY 2009 Federal Funds	FY 2009 Matching Funds	FY 2010 Federal Funds	FY 2010 Matching Funds	FY 11-12 Federal Funds	FY 11-12 Matching Funds	Estimated Project Total
CON	\$60,800	\$15,200	\$30,400	\$7,600	\$30,400	\$7,600	\$64,000	\$16,000			\$232,000
OTH											\$0
PE											\$0
PP											\$0
ROW											\$0
Totals	\$60,800	\$15,200	\$30,400	\$7,600	\$30,400	\$7,600	\$64,000	\$16,000	\$0	\$0	\$232,000

Interstate Maintenance

Phase	Previous Requests		Annual Element		Federal Funding Requests						Project Totals
	Previous Federal Funds	Previous Matching Funds	FY 2008 Federal Funds	FY 2008 Matching Funds	FY 2009 Federal Funds	FY 2009 Matching Funds	FY 2010 Federal Funds	FY 2010 Matching Funds	FY 11-12 Federal Funds	FY 11-12 Matching Funds	Estimated Project Total
CON	\$8,000	\$2,000	\$4,000	\$1,000	\$4,000	\$1,000	\$16,000	\$4,000			\$40,000
OTH											\$0
PE											\$0
PP											\$0
ROW											\$0
Totals	\$8,000	\$2,000	\$4,000	\$1,000	\$4,000	\$1,000	\$16,000	\$4,000	\$0	\$0	\$40,000

National Highway System

Phase	Previous Requests		Annual Element		Federal Funding Requests						Project Totals
	Previous Federal Funds	Previous Matching Funds	FY 2008 Federal Funds	FY 2008 Matching Funds	FY 2009 Federal Funds	FY 2009 Matching Funds	FY 2010 Federal Funds	FY 2010 Matching Funds	FY 11-12 Federal Funds	FY 11-12 Matching Funds	Estimated Project Total
CON	\$3,200	\$800	\$1,600	\$400	\$1,600	\$400	\$4,800	\$1,200			\$14,000
OTH											\$0
PE											\$0
PP											\$0
ROW											\$0
Totals	\$3,200	\$800	\$1,600	\$400	\$1,600	\$400	\$4,800	\$1,200	\$0	\$0	\$14,000

Surface Transportation Program

Phase	Previous Requests		Annual Element		Federal Funding Requests						Project Totals
	Previous Federal Funds	Previous Matching Funds	FY 2008 Federal Funds	FY 2008 Matching Funds	FY 2009 Federal Funds	FY 2009 Matching Funds	FY 2010 Federal Funds	FY 2010 Matching Funds	FY 11-12 Federal Funds	FY 11-12 Matching Funds	Estimated Project Total
CON	\$3,200	\$800	\$1,600	\$400	\$1,600	\$400	\$4,800	\$1,200			\$14,000
OTH											\$0
PE											\$0
PP											\$0
ROW											\$0
Totals	\$3,200	\$800	\$1,600	\$400	\$1,600	\$400	\$4,800	\$1,200	\$0	\$0	\$14,000

Areawide Resurfacing And Rehabilitation

TIP Id #	60-9501-11	Year of Operation	Ongoing
Agency	State Highway Administration	Project Type	Road resurfacing/rehabilitation
Project Category	Highway Preservation	Functional Class	NA
Conformity Status	Exempt	Physical Data	NA
CIP/CTP Page#	NA		

Description	Justification
These are non-capacity improvements which include milling, patching, sealing, and resurfacing existing deteriorated state roadways in Anne Arundel, Baltimore, Carroll, Harford, and Howard counties as needed.	Will improve safety and the flow of traffic. This project listing represents a large funding request for many small resurfacing projects throughout the Baltimore region. Project selection is based upon need and is subject to change.

Interstate Maintenance

Phase	Previous Requests		Annual Element		Federal Funding Requests						Project Totals
	Previous Federal Funds	Previous Matching Funds	FY 2008 Federal Funds	FY 2008 Matching Funds	FY 2009 Federal Funds	FY 2009 Matching Funds	FY 2010 Federal Funds	FY 2010 Matching Funds	FY 11-12 Federal Funds	FY 11-12 Matching Funds	Estimated Project Total
CON	\$40,000	\$10,000	\$21,600	\$5,400	\$16,800	\$4,200	\$40,000	\$10,000			\$148,000
OTH											\$0
PE											\$0
PP											\$0
ROW											\$0
Totals	\$40,000	\$10,000	\$21,600	\$5,400	\$16,800	\$4,200	\$40,000	\$10,000	\$0	\$0	\$148,000

National Highway System

Phase	Previous Requests		Annual Element		Federal Funding Requests						Project Totals
	Previous Federal Funds	Previous Matching Funds	FY 2008 Federal Funds	FY 2008 Matching Funds	FY 2009 Federal Funds	FY 2009 Matching Funds	FY 2010 Federal Funds	FY 2010 Matching Funds	FY 11-12 Federal Funds	FY 11-12 Matching Funds	Estimated Project Total
CON	\$40,000	\$10,000	\$22,400	\$5,600	\$16,000	\$4,000	\$52,000	\$13,000			\$163,000
OTH											\$0
PE											\$0
PP											\$0
ROW											\$0
Totals	\$40,000	\$10,000	\$22,400	\$5,600	\$16,000	\$4,000	\$52,000	\$13,000	\$0	\$0	\$163,000

Surface Transportation Program

Phase	Previous Requests		Annual Element		Federal Funding Requests						Project Totals
	Previous Federal Funds	Previous Matching Funds	FY 2008 Federal Funds	FY 2008 Matching Funds	FY 2009 Federal Funds	FY 2009 Matching Funds	FY 2010 Federal Funds	FY 2010 Matching Funds	FY 11-12 Federal Funds	FY 11-12 Matching Funds	Estimated Project Total
CON	\$70,400	\$17,600	\$38,400	\$9,600	\$36,000	\$9,000	\$88,000	\$22,000			\$291,000
OTH											\$0
PE											\$0
PP											\$0
ROW											\$0
Totals	\$70,400	\$17,600	\$38,400	\$9,600	\$36,000	\$9,000	\$88,000	\$22,000	\$0	\$0	\$291,000

2008 - 2012 Transportation Improvement Program

State Highway Administration

Miscellaneous

Morgan State University Transportation Center

TIP Id #	60-0701-99	Year of Operation	n/a
Agency	State Highway Administration	Project Type	Miscellaneous
Project Category	Miscellaneous	Functional Class	NA
Conformity Status	Exempt	Physical Data	NA
CIP/CTP Page#	NA		

Description	Justification
Transportation research, education and technology transfer activities involving university faculty, staff and students.	The project will support research that solves real world transportation problems and meets state and federal transportation objectives.

Other

Phase	Previous Requests		Annual Element		Federal Funding Requests						Project Totals
	Previous Federal Funds	Previous Matching Funds	FY 2008 Federal Funds	FY 2008 Matching Funds	FY 2009 Federal Funds	FY 2009 Matching Funds	FY 2010 Federal Funds	FY 2010 Matching Funds	FY 11-12 Federal Funds	FY 11-12 Matching Funds	Estimated Project Total
CON	\$500	\$500									\$1,000
OTH											\$0
PE											\$0
PP											\$0
ROW											\$0
Totals	\$500	\$500	\$0	\$0	\$0	\$0	\$0	\$0	\$0	\$0	\$1,000