

Dogwood Road Bridge Over Bens Run

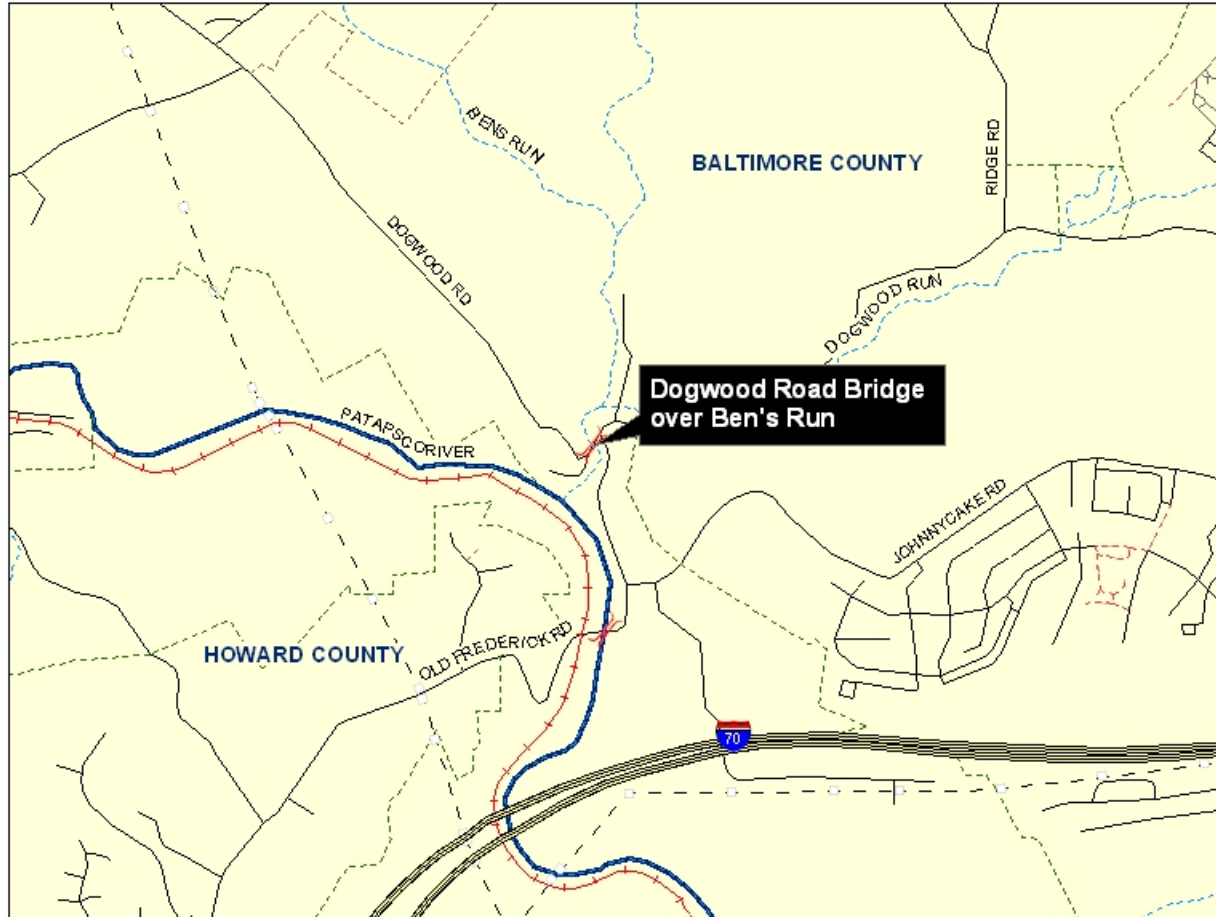
TIP Id #	13-0001-13	Year of Operation	2007
Agency	Local Project	Project Type	Bridge repair/deck replacement
Project Category	Highway Preservation	Functional Class	NA
Conformity Status	Exempt	Physical Data	2 /2 Lanes
CIP/CTP Page#	NA		

Description	Justification
Replacement of existing bridge.	The National Bridge Inspection Program recommends replacement due to extensive concrete contamination. This project is consistent with federal, state, and local bridge replacement policies.

Bridge Replacement and Rehabilitation

Phase	Previous Requests		Annual Element		Federal Funding Requests						Project Totals
	Previous Federal Funds	Previous Matching Funds	FY 2008 Federal Funds	FY 2008 Matching Funds	FY 2009 Federal Funds	FY 2009 Matching Funds	FY 2010 Federal Funds	FY 2010 Matching Funds	FY 11-12 Federal Funds	FY 11-12 Matching Funds	Estimated Project Total
CON	\$1,650	\$520	\$150	\$170							\$2,490
OTH											\$0
PE											\$0
PP											\$0
ROW											\$0
Totals	\$1,650	\$520	\$150	\$170	\$0	\$0	\$0	\$0	\$0	\$0	\$2,490

**Dogwood Road Bridge over Ben's Run
Bridge Repair/Deck Replacement**



Source: Baltimore Metropolitan Council

Marlyn Avenue Bridge # 77 Over Deep Creek

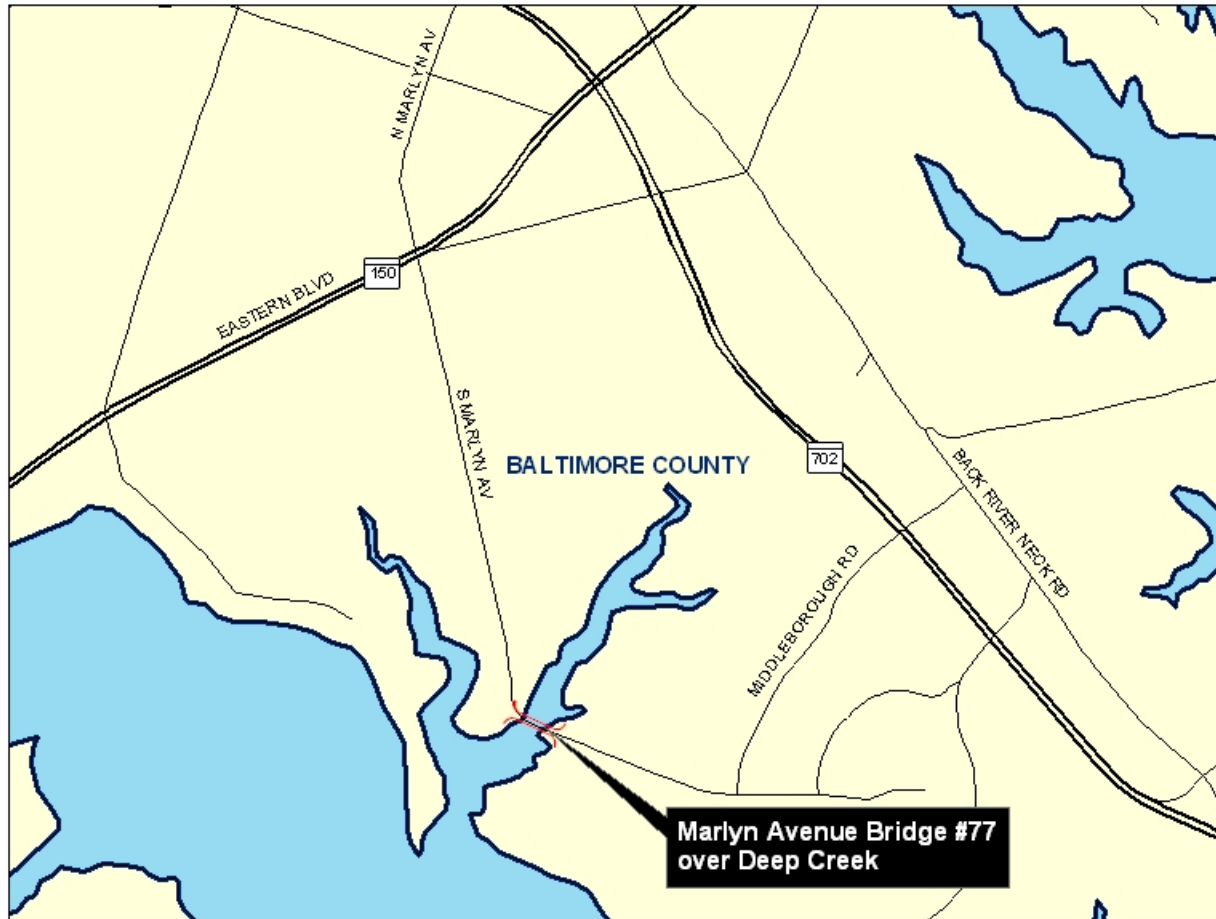
TIP Id #	13-0101-13	Year of Operation	2007
Agency	Local Project	Project Type	Bridge repair/deck replacement
Project Category	Highway Preservation	Functional Class	NA
Conformity Status	Exempt	Physical Data	2 /2 Lanes
CIP/CTP Page#	NA		

Description	Justification
Superstructure strengthening and/or replacement of existing bridge.	<p>This bridge provides truck access to an established industrial area. Currently, the bridge is only rated to carry 13 tons. It is anticipated that the strengthening of the bridge in conjunction with the deck replacement will eliminate weight restrictions for this bridge.</p> <p>* Could serve to improve conditions for bicycling and/or walking per approved local, regional and/or statewide bicycle and pedestrian planning documents.</p>

Bridge Replacement and Rehabilitation

Phase	Previous Requests		Annual Element		Federal Funding Requests						Project Totals
	Previous Federal Funds	Previous Matching Funds	FY 2008 Federal Funds	FY 2008 Matching Funds	FY 2009 Federal Funds	FY 2009 Matching Funds	FY 2010 Federal Funds	FY 2010 Matching Funds	FY 11-12 Federal Funds	FY 11-12 Matching Funds	Estimated Project Total
CON	\$1,710	\$530	\$250	\$350							\$2,840
OTH											\$0
PE											\$0
PP											\$0
ROW											\$0
Totals	\$1,710	\$530	\$250	\$350	\$0	\$0	\$0	\$0	\$0	\$0	\$2,840

Marlyn Bridge #77 over Deep Creek Bridge Repair/Deck Replacement



Source: Baltimore Metropolitan Council

Mt. Vista Road Bridge # 225

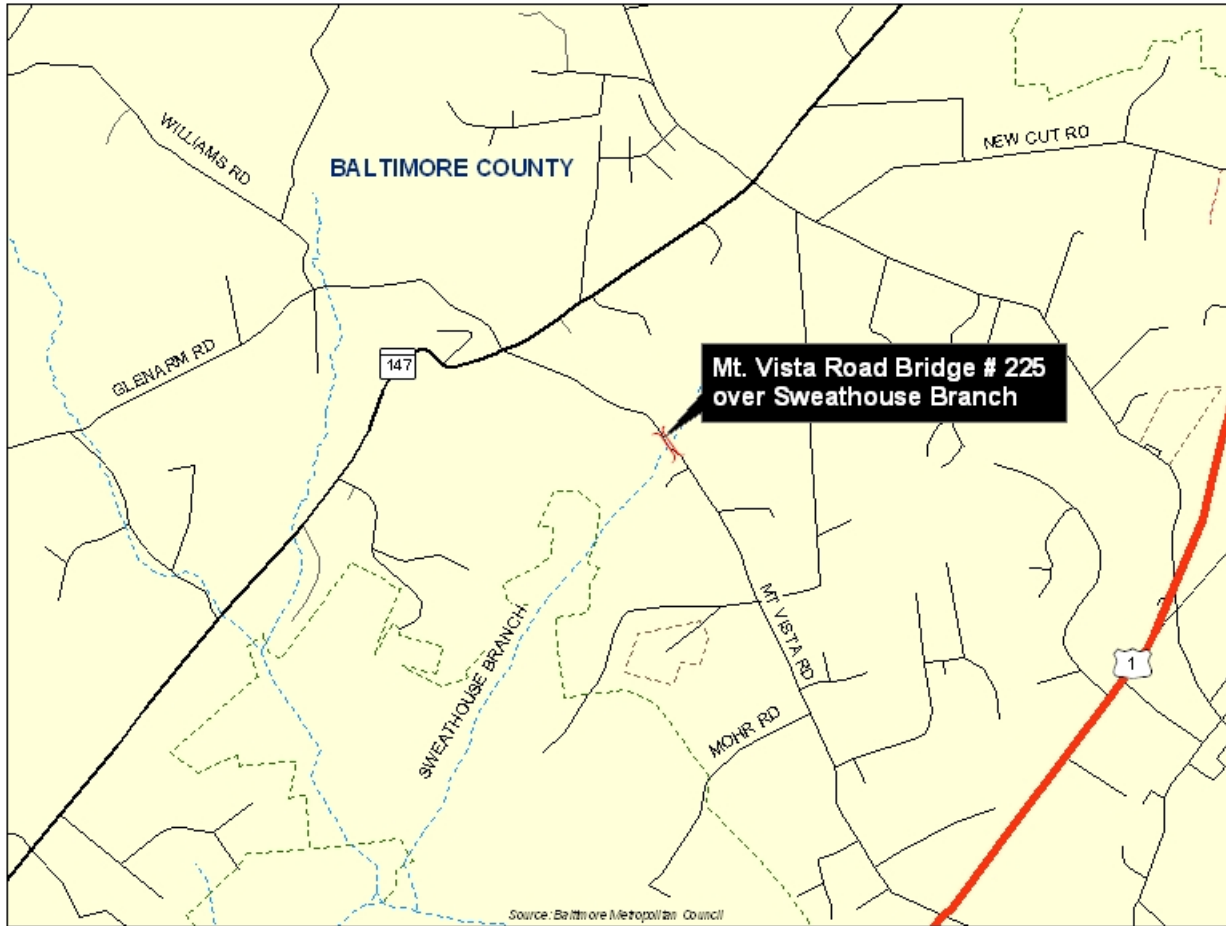
TIP Id #	13-0409-13	Year of Operation	2007
Agency	Local Project	Project Type	Bridge repair/deck replacement
Project Category	Highway Preservation	Functional Class	NA
Conformity Status	Exempt	Physical Data	2 /2 Lanes
CIP/CTP Page#	NA		

Description	Justification
Replacement of a deteriorated two-span bridge built in the 1920s.	Replacement of this bridge will result in improved safety and access for goods movement.

Bridge Replacement and Rehabilitation

Phase	Previous Requests		Annual Element		Federal Funding Requests						Project Totals
	Previous Federal Funds	Previous Matching Funds	FY 2008 Federal Funds	FY 2008 Matching Funds	FY 2009 Federal Funds	FY 2009 Matching Funds	FY 2010 Federal Funds	FY 2010 Matching Funds	FY 11-12 Federal Funds	FY 11-12 Matching Funds	Estimated Project Total
CON	\$720	\$140	\$50	\$100							\$1,010
OTH											\$0
PE											\$0
PP											\$0
ROW											\$0
Totals	\$720	\$140	\$50	\$100	\$0	\$0	\$0	\$0	\$0	\$0	\$1,010

**Mt. Vista Road Bridge #225 over Sweathouse Branch
Bridge Repair/Deck Replacement**



Thornton Mill Rd. Bridge No. 193

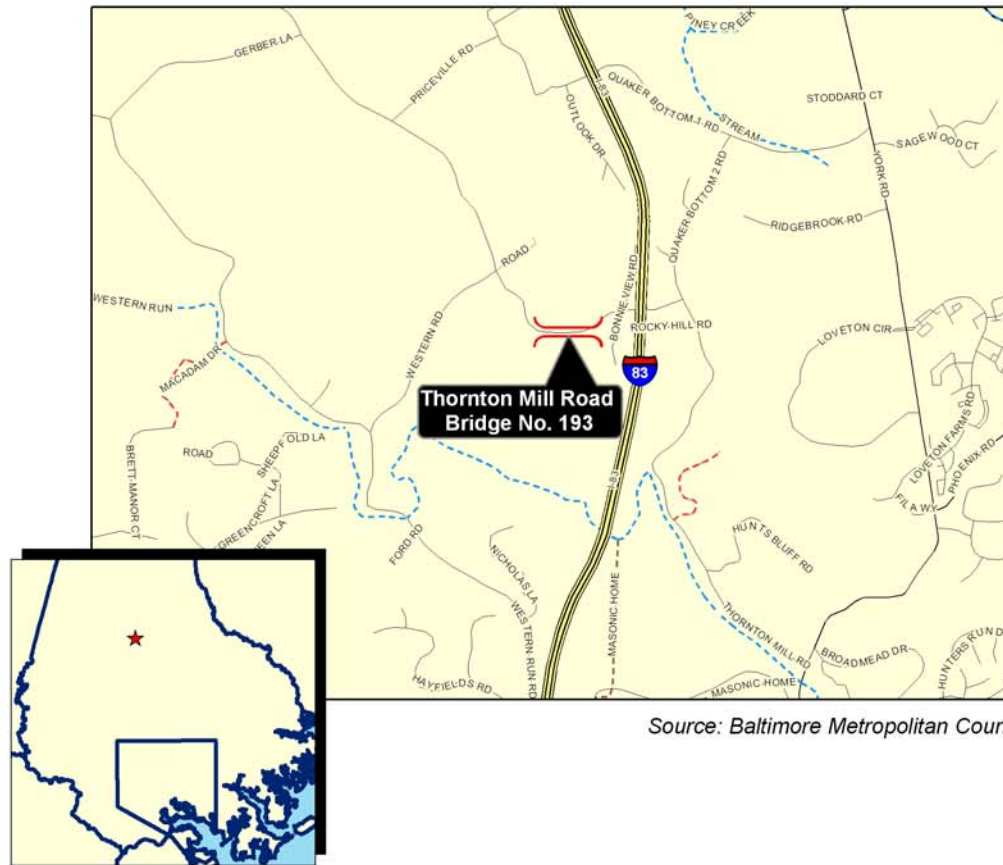
TIP Id #	13-0703-13	Year of Operation	2008
Agency	Local Project	Project Type	Bridge repair/deck replacement
Project Category	Highway Preservation	Functional Class	Local
Conformity Status	Exempt	Physical Data	2/2
CIP/CTP Page#	NA		

Description	Justification
Replacement Structure	This replacement project will enhance transportation facilities, improve safety, and provide access for goods movement.

Bridge Replacement and Rehabilitation

Phase	Previous Requests		Annual Element		Federal Funding Requests						Project Totals
	Previous Federal Funds	Previous Matching Funds	FY 2008 Federal Funds	FY 2008 Matching Funds	FY 2009 Federal Funds	FY 2009 Matching Funds	FY 2010 Federal Funds	FY 2010 Matching Funds	FY 11-12 Federal Funds	FY 11-12 Matching Funds	Estimated Project Total
CON		\$290	\$430	\$10							\$730
OTH											\$0
PE											\$0
PP											\$0
ROW											\$0
Totals	\$0	\$290	\$430	\$10	\$0	\$0	\$0	\$0	\$0	\$0	\$730

Thornton Mill Road Bridge No. 193



Source: Baltimore Metropolitan Council

Eagle Mill Road Bridge #117

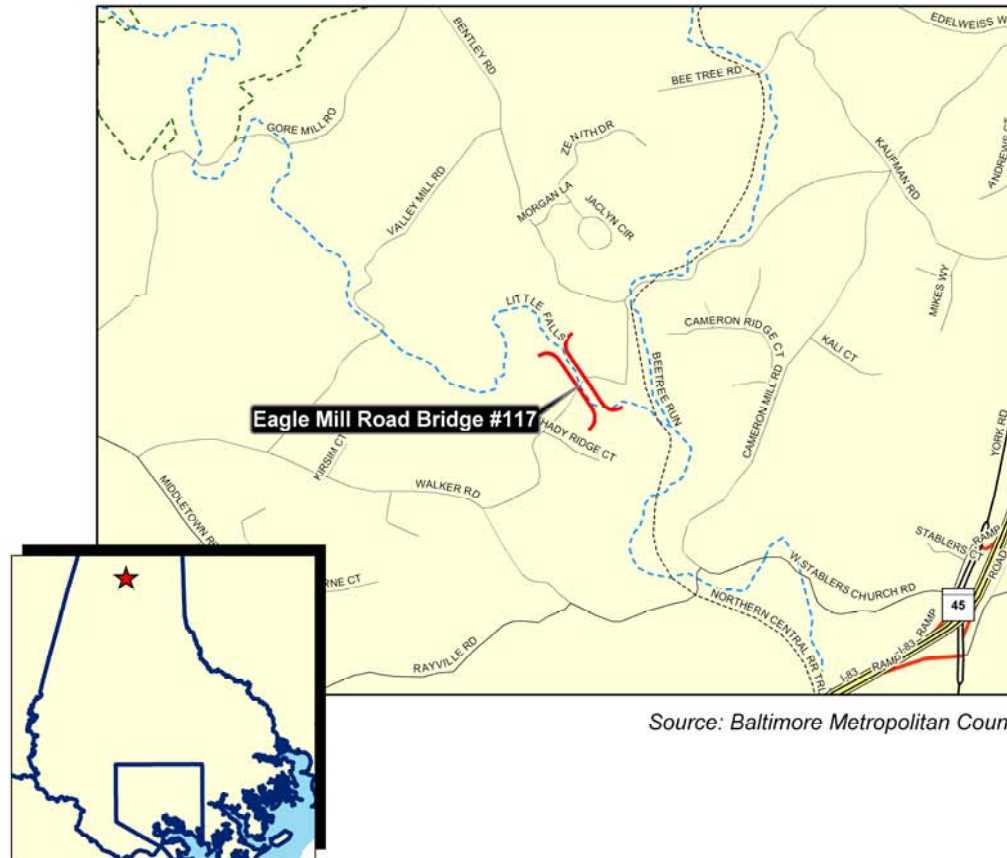
TIP Id #	13-0801-13	Year of Operation	2008
Agency	Local Project	Project Type	Bridge repair/deck replacement
Project Category	Highway Preservation	Functional Class	Local
Conformity Status	Exempt	Physical Data	NA
CIP/CTP Page#	NA		

Description	Justification
Replacement of Existing Bridge	Replacement of this bridge will result in improved safety and access for goods movement.

Bridge Replacement and Rehabilitation

Phase	Previous Requests		Annual Element		Federal Funding Requests						Project Totals
	Previous Federal Funds	Previous Matching Funds	FY 2008 Federal Funds	FY 2008 Matching Funds	FY 2009 Federal Funds	FY 2009 Matching Funds	FY 2010 Federal Funds	FY 2010 Matching Funds	FY 11-12 Federal Funds	FY 11-12 Matching Funds	Estimated Project Total
CON					\$800	\$820					\$1,620
OTH											\$0
PE			\$200	\$100							\$300
PP											\$0
ROW				\$30							\$30
Totals	\$0	\$0	\$200	\$130	\$800	\$820	\$0	\$0	\$0	\$0	\$1,950

Eagle Mill Road Bridge #117



Source: Baltimore Metropolitan Council

Mohrs Lane Bridge #143

TIP Id #	13-0803-13	Year of Operation	2008
Agency	Local Project	Project Type	Bridge repair/deck replacement
Project Category	Highway Preservation	Functional Class	Local
Conformity Status	Exempt	Physical Data	NA
CIP/CTP Page#	NA		

Description	Justification
Replacement and Widening of existing bridge and approaches to accommodate future Campbell Blvd.	This project is to accommodate the future traffic generated by the building of Campbell Blvd.

Bridge Replacement and Rehabilitation

Phase	Previous Requests		Annual Element		Federal Funding Requests						Project Totals
	Previous Federal Funds	Previous Matching Funds	FY 2008 Federal Funds	FY 2008 Matching Funds	FY 2009 Federal Funds	FY 2009 Matching Funds	FY 2010 Federal Funds	FY 2010 Matching Funds	FY 11-12 Federal Funds	FY 11-12 Matching Funds	Estimated Project Total
CON							\$4,000	\$1,000			\$5,000
OTH											\$0
PE			\$400	\$100							\$500
PP											\$0
ROW				\$100							\$100
Totals	\$0	\$0	\$400	\$200	\$0	\$0	\$4,000	\$1,000	\$0	\$0	\$5,600

Mohrs Lane Bridge #143



Source: Baltimore Metropolitan Council

Harris Mill Road Bridge #191

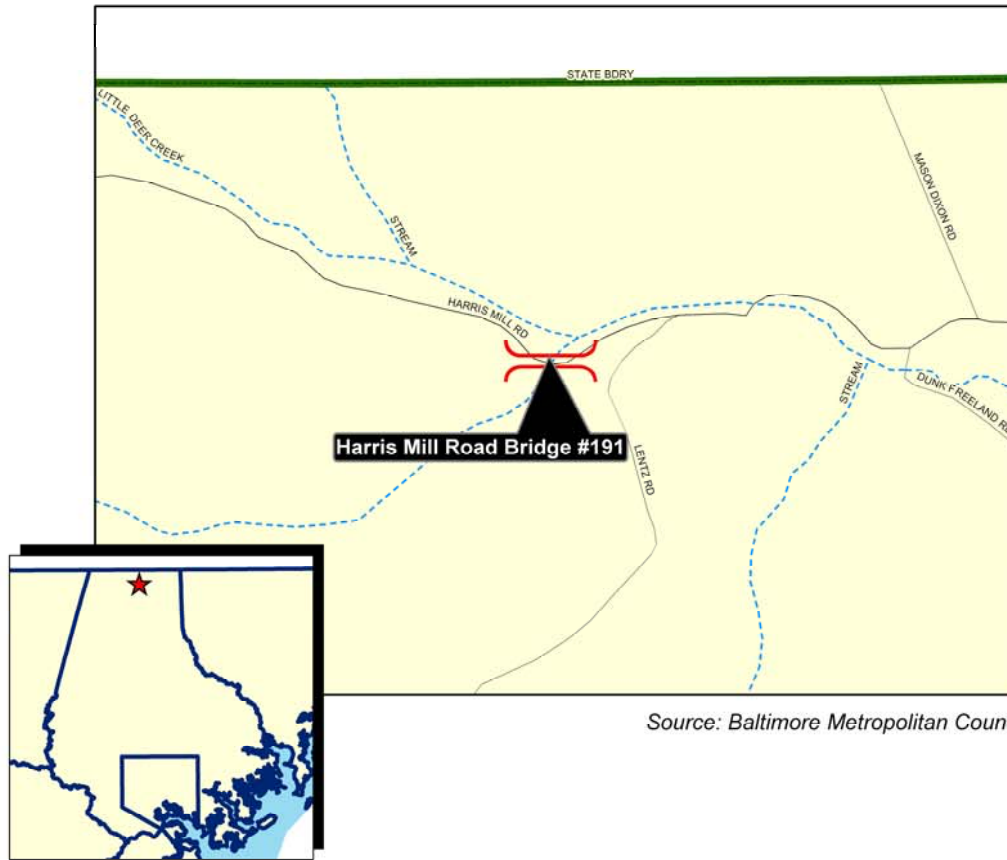
TIP Id #	13-0804-13	Year of Operation	2008
Agency	Local Project	Project Type	Bridge repair/deck replacement
Project Category	Highway Preservation	Functional Class	Local
Conformity Status	Exempt	Physical Data	NA
CIP/CTP Page#	NA		

Description	Justification
Replacement of existing bridge	Replacement of this bridge will result in improved safety and access for goods movement.

Bridge Replacement and Rehabilitation

Phase	Previous Requests		Annual Element		Federal Funding Requests						Project Totals
	Previous Federal Funds	Previous Matching Funds	FY 2008 Federal Funds	FY 2008 Matching Funds	FY 2009 Federal Funds	FY 2009 Matching Funds	FY 2010 Federal Funds	FY 2010 Matching Funds	FY 11-12 Federal Funds	FY 11-12 Matching Funds	Estimated Project Total
CON					\$900	\$855					\$1,755
OTH											\$0
PE			\$100	\$100							\$200
PP											\$0
ROW				\$20							\$20
Totals	\$0	\$0	\$100	\$120	\$900	\$855	\$0	\$0	\$0	\$0	\$1,975

Harris Mill Road Bridge #191



Source: Baltimore Metropolitan Council

Biennial Bridge Inspection

TIP Id #	13-8901-14	Year of Operation	Ongoing
Agency	Local Project	Project Type	Bridge inspections
Project Category	Highway Preservation	Functional Class	NA
Conformity Status	Exempt	Physical Data	NA
CIP/CTP Page#	NA		

Description	Justification
Countywide inspection of all bridges as federally mandated.	Federally mandated and federally aided program which requires inspection of all bridges over 20 feet in length every two years. The county also inspects all bridges under 20 feet every two years. Certain critical bridges and the investigation of scour effects on bridges are included in this program.

Bridge Replacement and Rehabilitation

Phase	Previous Requests		Annual Element		Federal Funding Requests						Project Totals
	Previous Federal Funds	Previous Matching Funds	FY 2008 Federal Funds	FY 2008 Matching Funds	FY 2009 Federal Funds	FY 2009 Matching Funds	FY 2010 Federal Funds	FY 2010 Matching Funds	FY 11-12 Federal Funds	FY 11-12 Matching Funds	Estimated Project Total
CON											\$0
OTH											\$0
PE											\$0
PP											\$0
ROW											\$0
Totals	\$0	\$0	\$0	\$0	\$0	\$0	\$0	\$0	\$0	\$0	\$0