

State Highway Administration

Baltimore City

Fort McHenry Visitors Center/Parking

TIP Id #	62-0634-99	Year of Operation	2012
Agency	State Highway Administration	Project Type	Miscellaneous
Project Category	Miscellaneous	Functional Class	NA
Conformity Status	Exempt	Physical Data	NA
CIP/CTP Page#	NA		

Description	Justification
<p>This project entails constructing a new Education/Administration Center as proposed in the 1988 amendment to the 1968 Master Plan/Environmental Assessment. This new structure will replace a 5,700 s.f. building designed for visitation of 250,000 per year. Current annual visitation is over 620,000. The proposed structure (15,000-20,000 s.f.) will provide critical visitor services such as education and orientation needed to successfully and safely visit the park. Functions to be included are visitor services and orientation, accessible restroom facilities, exhibits, multi-purpose space, auditorium, consolidated staff offices, bookstore, library, and partner group office space. The 1988 amended Master Plan/Environmental Assessment also includes redesign of the parking area to facilitate more busses and cars.</p> <p>* Three SAFETEA-LU earmarks.</p>	<p>The current park visitor center was built in 1964, the building cannot reasonably accommodate school and tour groups, common in the spring and summer months. Currently neither the restrooms nor administrative areas in the building are wheelchair accessible. In trying to facilitate the number of large groups that routinely visit, the park regularly exceeds safe building occupancy levels.</p>

Section 1602 High Priority Projects

Phase	Previous Requests		Annual Element		Federal Funding Requests						Project Totals
	Previous Federal Funds	Previous Matching Funds	FY 2007 Federal Funds	FY 2007 Matching Funds	FY 2008 Federal Funds	FY 2008 Matching Funds	FY 2009 Federal Funds	FY 2009 Matching Funds	FY 10-11 Federal Funds	FY 10-11 Matching Funds	Estimated Project Total
CON	\$4,505	\$901				\$4,896	\$979				\$11,281
OTH											\$0
PE											\$0
PP											\$0
ROW											\$0
Totals	\$4,505	\$901	\$0	\$0	\$0	\$4,896	\$979	\$0	\$0	\$0	\$11,281

Fort McHenry Visitors Center/Parking (\$2 Mill)



Source: Baltimore Metropolitan Council

Intersection Improvements for University of Maryland

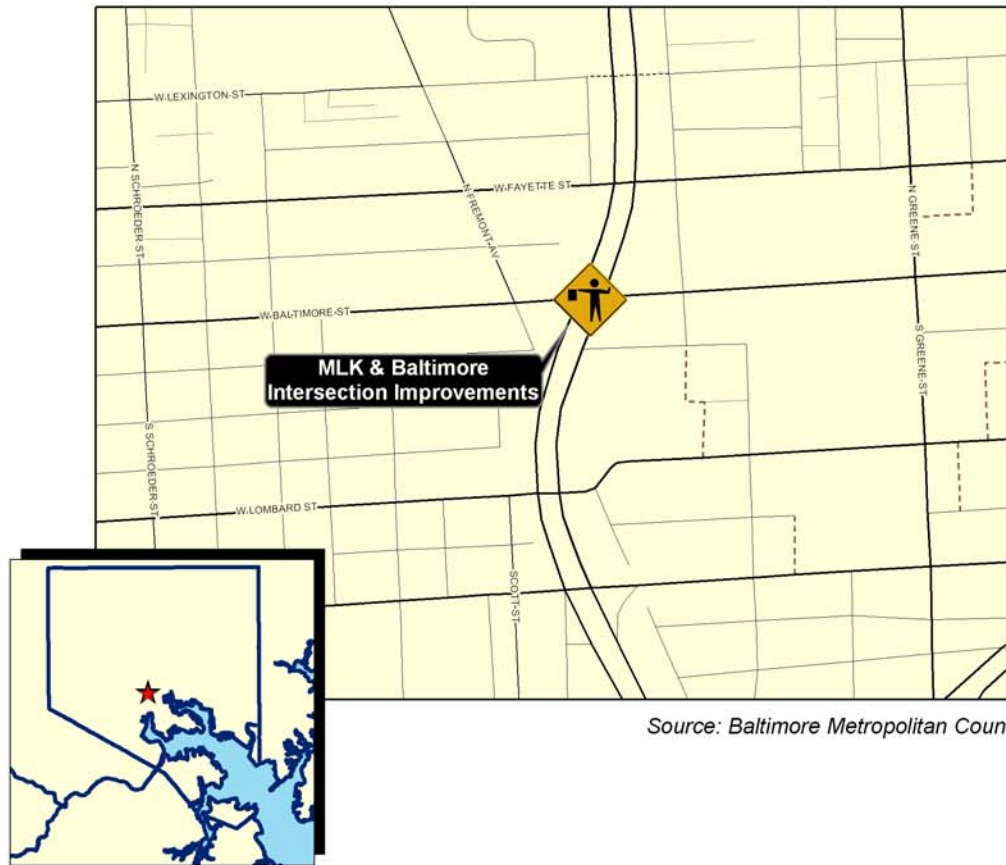
TIP Id #	62-0701-99	Year of Operation	2012
Agency	State Highway Administration	Project Type	Miscellaneous
Project Category	Miscellaneous	Functional Class	NA
Conformity Status	Exempt	Physical Data	NA
CIP/CTP Page#	NA		

Description	Justification
This is to augment improvements to intersections around the University of Maryland, particularly at MLK Boulevard and West Baltimore Street. There will be safety and operational improvements to improve both pedestrian and vehicular traffic through the area.	

Section 1602 High Priority Projects

Phase	Previous Requests		Annual Element		Federal Funding Requests						Project Totals
	Previous Federal Funds	Previous Matching Funds	FY 2007 Federal Funds	FY 2007 Matching Funds	FY 2008 Federal Funds	FY 2008 Matching Funds	FY 2009 Federal Funds	FY 2009 Matching Funds	FY 10-11 Federal Funds	FY 10-11 Matching Funds	Estimated Project Total
CON			\$2,000	\$500							\$2,500
OTH											\$0
PE											\$0
PP											\$0
ROW											\$0
Totals	\$0	\$0	\$2,000	\$500	\$0	\$0	\$0	\$0	\$0	\$0	\$2,500

MLK & Baltimore Intersection Improvements



Source: Baltimore Metropolitan Council

Coppin State University Pedestrian Bridge and Garage

TIP Id #	62-0702-99	Year of Operation	2012
Agency	State Highway Administration	Project Type	Miscellaneous
Project Category	Miscellaneous	Functional Class	NA
Conformity Status	Exempt	Physical Data	NA
CIP/CTP Page#	NA		

Description	Justification
Construct a pedestrian bridge and garage at Coppin State University in Baltimore.	

Section 1602 High Priority Projects

Phase	Previous Requests		Annual Element		Federal Funding Requests						Project Totals
	Previous Federal Funds	Previous Matching Funds	FY 2007 Federal Funds	FY 2007 Matching Funds	FY 2008 Federal Funds	FY 2008 Matching Funds	FY 2009 Federal Funds	FY 2009 Matching Funds	FY 10-11 Federal Funds	FY 10-11 Matching Funds	Estimated Project Total
CON			\$2,640	\$660							\$3,300
OTH											\$0
PE											\$0
PP											\$0
ROW											\$0
Totals	\$0	\$0	\$2,640	\$660	\$0	\$0	\$0	\$0	\$0	\$0	\$3,300

Coppin State University Pedestrian Bridge and Garage



Source: Baltimore Metropolitan Council

State Highway Administration

Anne Arundel County

Broadneck Peninsula Trail

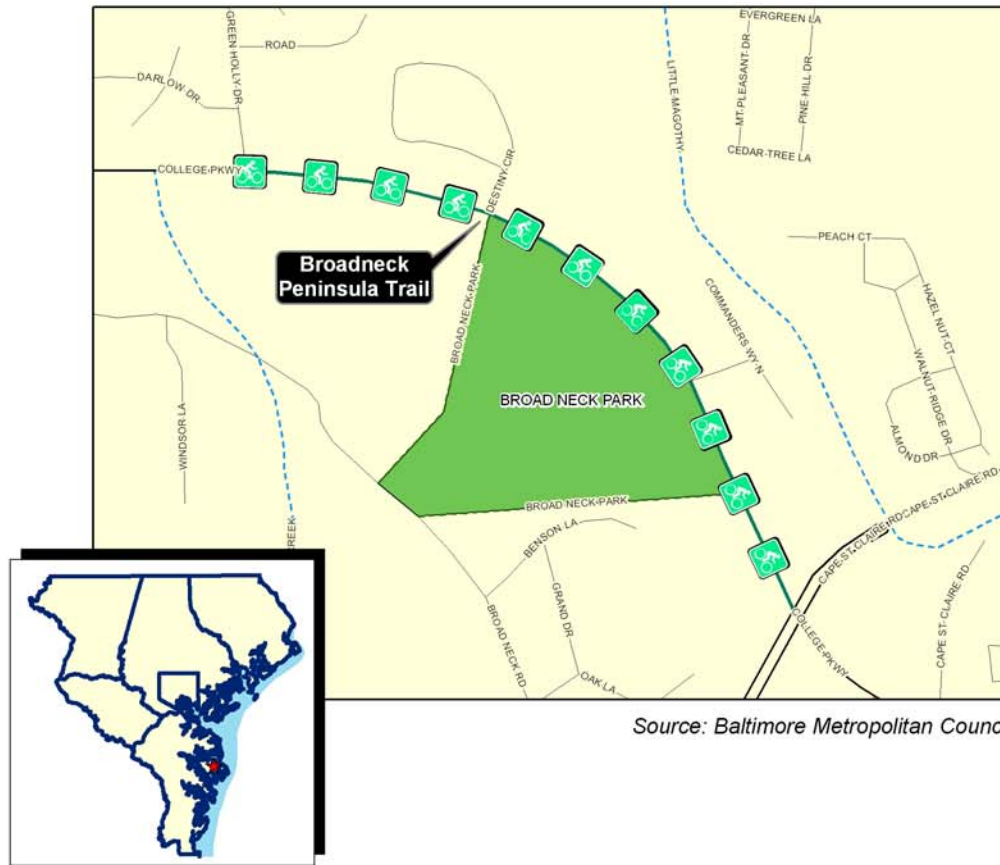
TIP Id #	61-0701-03	Year of Operation	2007
Agency	State Highway Administration	Project Type	Bicycle/pedestrian facilities
Project Category	Emission Reduction Strategy	Functional Class	NA
Conformity Status	Exempt	Physical Data	NA
CIP/CTP Page#	NA		

Description	Justification
Construct Phase I of the Broadneck Peninsula Trail from Green Holly Drive, at the Broadneck Park, to Cape St. Clair Road and the Nike site.	<p>This project is a multi-use trail that will ultimate connect to the Chesapeake Bay Bridge and Sandy Point State Park with the Baltimore & Annapolis Trail.</p> <p>* Could serve to improve conditions for bicycling and/or walking per approved local, regional and/or statewide bicycle and pedestrian planning documents.</p>

Section 1602 High Priority Projects

Phase	Previous Requests		Annual Element		Federal Funding Requests						Project Totals
	Previous Federal Funds	Previous Matching Funds	FY 2007 Federal Funds	FY 2007 Matching Funds	FY 2008 Federal Funds	FY 2008 Matching Funds	FY 2009 Federal Funds	FY 2009 Matching Funds	FY 10-11 Federal Funds	FY 10-11 Matching Funds	Estimated Project Total
CON			\$1,200	\$300							\$1,500
OTH											\$0
PE											\$0
PP											\$0
ROW											\$0
Totals	\$0	\$0	\$1,200	\$300	\$0	\$0	\$0	\$0	\$0	\$0	\$1,500

Broadneck Peninsula Trail



Source: Baltimore Metropolitan Council

South Shore Trail

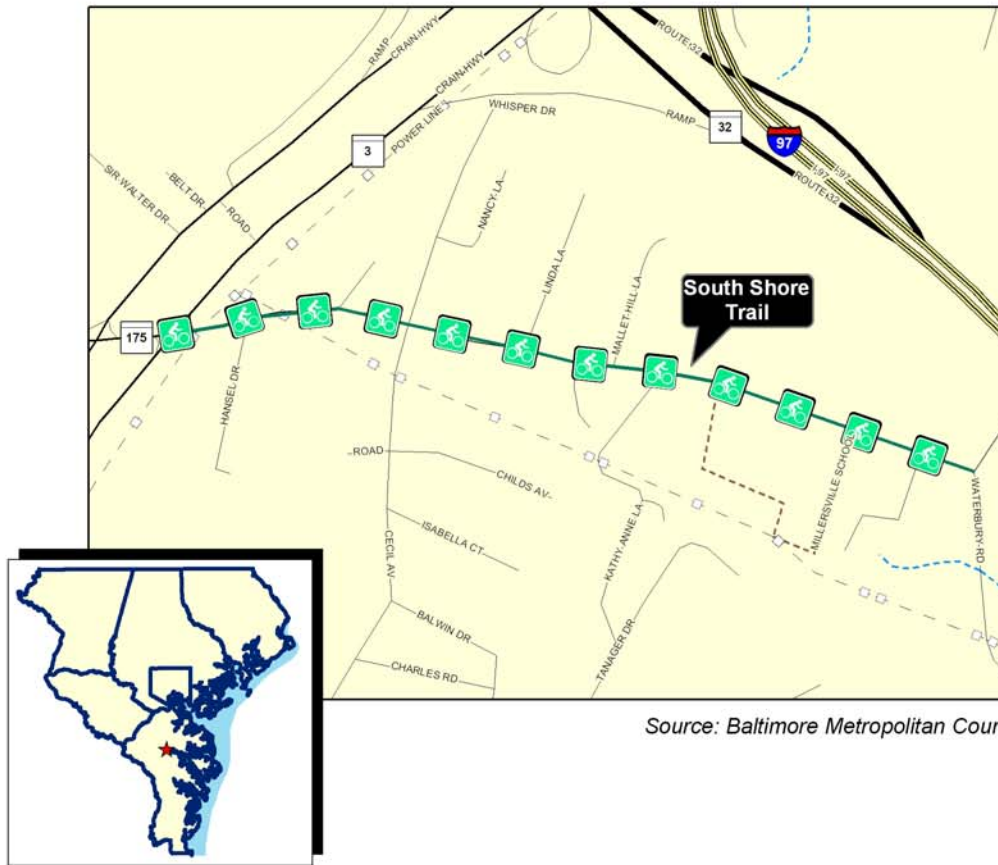
TIP Id #	61-0702-03	Year of Operation	2007
Agency	State Highway Administration	Project Type	Bicycle/pedestrian facilities
Project Category	Emission Reduction Strategy	Functional Class	NA
Conformity Status	Exempt	Physical Data	NA
CIP/CTP Page#	NA		

Description	Justification
Construct Phase I of the South Shore Trail from MD 3 at Millersville Road to I-97 at Waterbury Road. The project includes a 110 space parking lot, drainage structures, SWM devices and a 12 foot wide 60 foot bridge over Waterbury Road.	<p>This project will provide 1.82 miles of a multi-use trail that will ultimate connect to the Baltimore & Annapolis Trail.</p> <p>* Could serve to improve conditions for bicycling and/or walking per approved local, regional and/or statewide bicycle and pedestrian planning documents.</p>

Section 1602 High Priority Projects

Phase	Previous Requests		Annual Element		Federal Funding Requests						Project Totals
	Previous Federal Funds	Previous Matching Funds	FY 2007 Federal Funds	FY 2007 Matching Funds	FY 2008 Federal Funds	FY 2008 Matching Funds	FY 2009 Federal Funds	FY 2009 Matching Funds	FY 10-11 Federal Funds	FY 10-11 Matching Funds	Estimated Project Total
CON			\$160	\$400							\$560
OTH											\$0
PE											\$0
PP											\$0
ROW											\$0
Totals	\$0	\$0	\$160	\$400	\$0	\$0	\$0	\$0	\$0	\$0	\$560

South Shore Trail



MD 295, Baltimore Washington Parkway

TIP Id #	61-0501-41	Year of Operation	2010
Agency	State Highway Administration	Project Type	Roadway widening
Project Category	Highway Capacity	Functional Class	Freeway
Conformity Status	Not Exempt	Physical Data	1.5 miles / 4-lane divided highway
CIP/CTP Page#	AA-2		

Description	Justification
Widen MD 295 from 4 to 6 lanes from I-695 (Baltimore Beltway) to I-195.	This project will ease growing congestion and improve access to one of the State's economic engines, the Baltimore-Washington International Thurgood Marshall Airport.

Section 1602 High Priority Projects

Phase	Previous Requests		Annual Element		Federal Funding Requests						Project Totals
	Previous Federal Funds	Previous Matching Funds	FY 2007 Federal Funds	FY 2007 Matching Funds	FY 2008 Federal Funds	FY 2008 Matching Funds	FY 2009 Federal Funds	FY 2009 Matching Funds	FY 10-11 Federal Funds	FY 10-11 Matching Funds	Estimated Project Total
CON			\$4,992	\$1,248							\$6,240
OTH											\$0
PE											\$0
PP											\$0
ROW											\$0
Totals	\$0	\$0	\$4,992	\$1,248	\$0	\$0	\$0	\$0	\$0	\$0	\$6,240

National Highway System

Phase	Previous Requests		Annual Element		Federal Funding Requests						Project Totals
	Previous Federal Funds	Previous Matching Funds	FY 2007 Federal Funds	FY 2007 Matching Funds	FY 2008 Federal Funds	FY 2008 Matching Funds	FY 2009 Federal Funds	FY 2009 Matching Funds	FY 10-11 Federal Funds	FY 10-11 Matching Funds	Estimated Project Total
CON			\$9,242	\$2,311							\$11,553
OTH											\$0
PE											\$0
PP											\$0
ROW											\$0
Totals	\$0	\$0	\$9,242	\$2,311	\$0	\$0	\$0	\$0	\$0	\$0	\$11,553

Patuxent Research Refuge Road

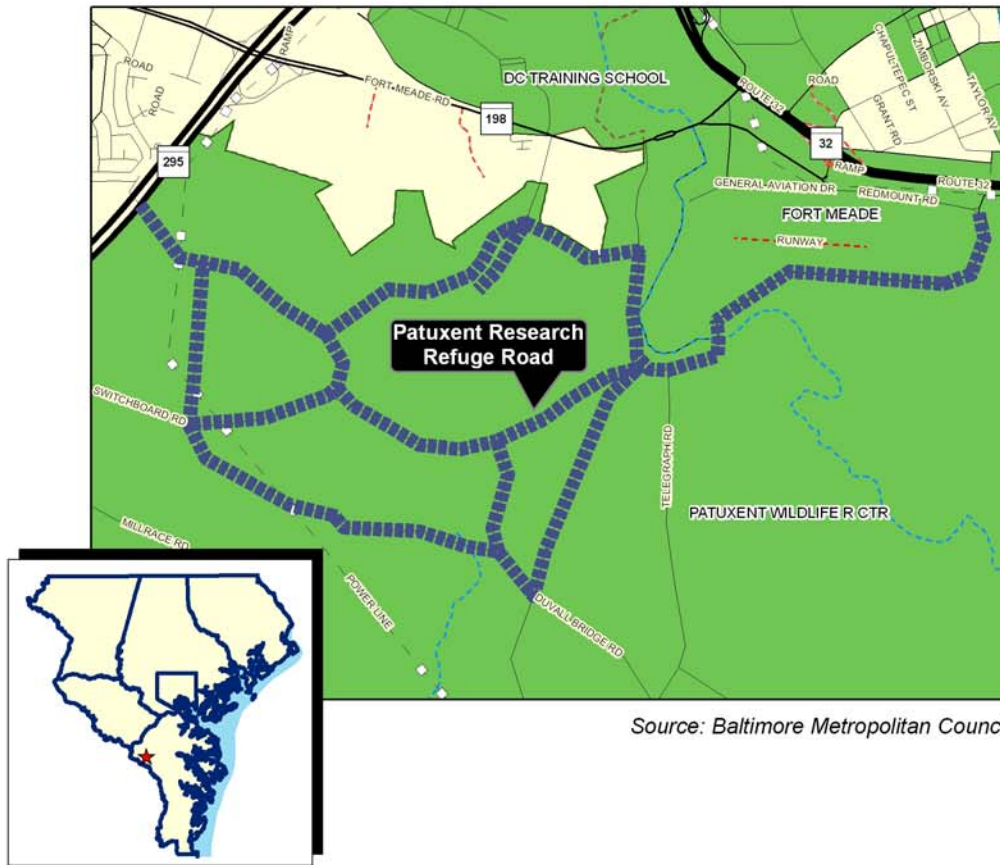
TIP Id #	61-0703-11	Year of Operation	2007
Agency	State Highway Administration	Project Type	Road resurfacing/rehabilitation
Project Category	Highway Preservation	Functional Class	Local
Conformity Status	Exempt	Physical Data	NA
CIP/CTP Page#	NA		

Description	Justification
Repair and resurfacing of roads on the North Track of the Patuxent Research Refuge.	Road conditions have deteriorated since the 8100 acres were transferred from Fort Meade to the refuge in 1991.

Section 1602 High Priority Projects

Phase	Previous Requests		Annual Element		Federal Funding Requests						Project Totals
	Previous Federal Funds	Previous Matching Funds	FY 2007 Federal Funds	FY 2007 Matching Funds	FY 2008 Federal Funds	FY 2008 Matching Funds	FY 2009 Federal Funds	FY 2009 Matching Funds	FY 10-11 Federal Funds	FY 10-11 Matching Funds	Estimated Project Total
CON			\$3,000	\$750							\$3,750
OTH											\$0
PE											\$0
PP											\$0
ROW											\$0
Totals	\$0	\$0	\$3,000	\$750	\$0	\$0	\$0	\$0	\$0	\$0	\$3,750

Patuxent Research Refuge Road



Source: Baltimore Metropolitan Council

State Highway Administration

Baltimore County

Greater Towson Area Traffic Study

TIP Id #	63-0701-29	Year of Operation	Ongoing
Agency	State Highway Administration	Project Type	Other
Project Category	Enhancement Program	Functional Class	NA
Conformity Status	Exempt	Physical Data	NA
CIP/CTP Page#	NA		

Description	Justification
Baltimore County will conduct a traffic study for the Greater Towson Area with support from SHA.	Preliminary scope for this project includes evaluating pedestrian access, local business access support, wayfinding signage, and parking in the Greater Towson Area. The outcome of the study will provide a guide for future action by Baltimore County and/or SHA.

Section 1602 High Priority Projects

Phase	Previous Requests		Annual Element		Federal Funding Requests						Project Totals
	Previous Federal Funds	Previous Matching Funds	FY 2007 Federal Funds	FY 2007 Matching Funds	FY 2008 Federal Funds	FY 2008 Matching Funds	FY 2009 Federal Funds	FY 2009 Matching Funds	FY 10-11 Federal Funds	FY 10-11 Matching Funds	Estimated Project Total
CON											\$0
OTH			\$160	\$40							\$200
PE											\$0
PP											\$0
ROW											\$0
Totals	\$0	\$0	\$160	\$40	\$0	\$0	\$0	\$0	\$0	\$0	\$200

MD 45: Cavan Drive to Ridgely Road

TIP Id #	63-0501-42	Year of Operation	2009
Agency	State Highway Administration	Project Type	New or extended roadways
Project Category	Highway Capacity	Functional Class	Collectors, major or minor
Conformity Status	Not Exempt	Physical Data	1.1mile 4/5 lanes
CIP/CTP Page#	NA		

Description	Justification
Widen MD 45 to provide a center turn lane from Cavan Drive to Ridgely Road. Project will include streetscape amenities and bicycle and pedestrian improvements where appropriate.	<p>This project will improve operations and safety as well as beautify this segment of MD 45. This project is in the Baltimore Regional Transportation Plan.</p> <p>* Could serve to improve conditions for bicycling and/or walking per approved local, regional and/or statewide bicycle and pedestrian planning documents.</p> <p>* In 2004 Plan, Chapter VII.18</p>

Section 1602 High Priority Projects

Phase	Previous Requests		Annual Element		Federal Funding Requests						Project Totals
	Previous Federal Funds	Previous Matching Funds	FY 2007 Federal Funds	FY 2007 Matching Funds	FY 2008 Federal Funds	FY 2008 Matching Funds	FY 2009 Federal Funds	FY 2009 Matching Funds	FY 10-11 Federal Funds	FY 10-11 Matching Funds	Estimated Project Total
CON	\$4,461	\$1,115									\$5,576
OTH											\$0
PE											\$0
PP											\$0
ROW											\$0
Totals	\$4,461	\$1,115	\$0	\$0	\$0	\$0	\$0	\$0	\$0	\$0	\$5,576

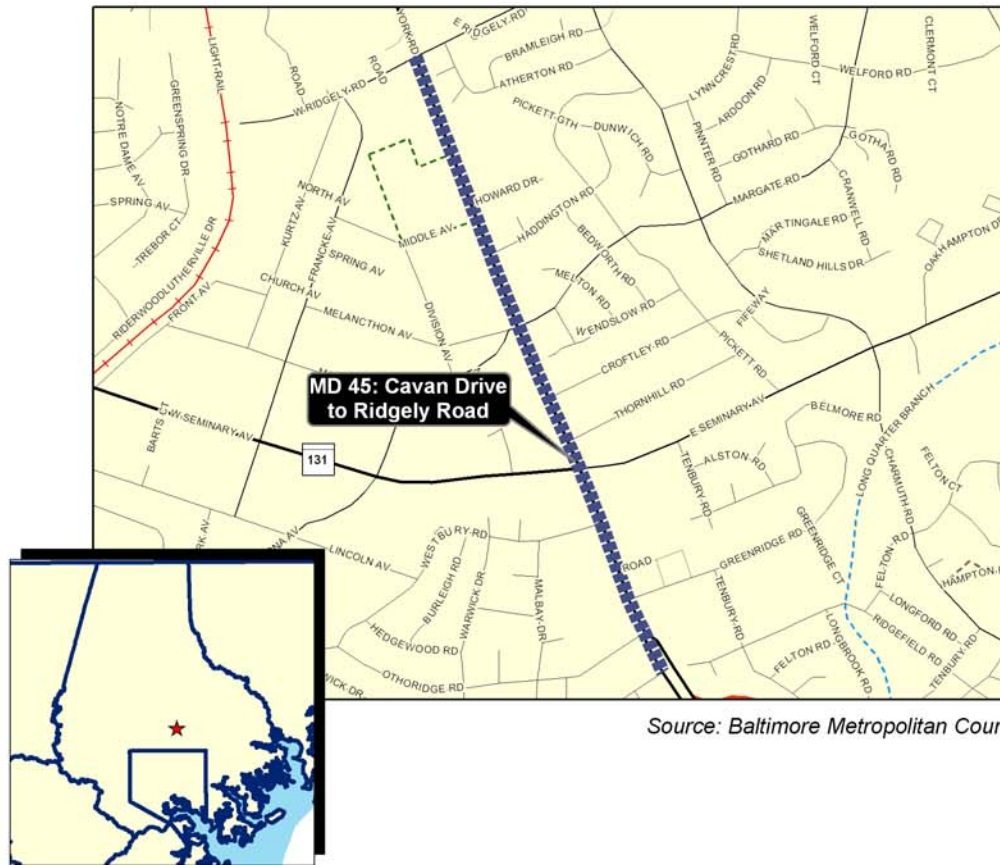
Enhancement Funds under STP

Phase	Previous Requests		Annual Element		Federal Funding Requests						Project Totals
	Previous Federal Funds	Previous Matching Funds	FY 2007 Federal Funds	FY 2007 Matching Funds	FY 2008 Federal Funds	FY 2008 Matching Funds	FY 2009 Federal Funds	FY 2009 Matching Funds	FY 10-11 Federal Funds	FY 10-11 Matching Funds	Estimated Project Total
CON	\$4,899	\$1,225									\$6,124
OTH											\$0
PE											\$0
PP											\$0
ROW	\$2,160	\$540									\$2,700
Totals	\$7,059	\$1,765	\$0	\$0	\$0	\$0	\$0	\$0	\$0	\$0	\$8,824

Other

Phase	Previous Requests		Annual Element		Federal Funding Requests						Project Totals
	Previous Federal Funds	Previous Matching Funds	FY 2007 Federal Funds	FY 2007 Matching Funds	FY 2008 Federal Funds	FY 2008 Matching Funds	FY 2009 Federal Funds	FY 2009 Matching Funds	FY 10-11 Federal Funds	FY 10-11 Matching Funds	Estimated Project Total
CON			\$750								\$750
OTH											\$0
PE											\$0
PP											\$0
ROW											\$0
Totals	\$0	\$0	\$750	\$0	\$0	\$0	\$0	\$0	\$0	\$0	\$750

MD 45: Cavan Drive to Ridgely Road



Source: Baltimore Metropolitan Council

State Highway Administration

Carroll County

MD 30 Relocated, Hampstead Bypass

TIP Id #	64-0102-42	Year of Operation	2009
Agency	State Highway Administration	Project Type	New or extended roadways
Project Category	Highway Capacity	Functional Class	Principal arterial
Conformity Status	Not Exempt	Physical Data	New Roadway
CIP/CTP Page#	CL-1		

Description	Justification
Construct a new 2 lane limited access highway replacing existing MD 30 from MD 30 south of Hampstead at Wolf Hill Drive to MD 30 north of Hampstead at Brodbeck Road. Shoulders will accommodate bicycles.	Existing MD 30 is a primary state highway linking the greater Baltimore area with southern Pennsylvania. The proposed improvement will relieve existing traffic operation and capacity issues on MD 30 in the Town of Hampstead. * In 2004 Plan, Appendix A1 (E & C)

Section 1602 High Priority Projects

Phase	Previous Requests		Annual Element		Federal Funding Requests						Project Totals
	Previous Federal Funds	Previous Matching Funds	FY 2007 Federal Funds	FY 2007 Matching Funds	FY 2008 Federal Funds	FY 2008 Matching Funds	FY 2009 Federal Funds	FY 2009 Matching Funds	FY 10-11 Federal Funds	FY 10-11 Matching Funds	Estimated Project Total
CON			\$800	\$200							\$1,000
OTH											\$0
PE											\$0
PP											\$0
ROW											\$0
Totals	\$0	\$0	\$800	\$200	\$0	\$0	\$0	\$0	\$0	\$0	\$1,000

National Highway System

Phase	Previous Requests		Annual Element		Federal Funding Requests						Project Totals
	Previous Federal Funds	Previous Matching Funds	FY 2007 Federal Funds	FY 2007 Matching Funds	FY 2008 Federal Funds	FY 2008 Matching Funds	FY 2009 Federal Funds	FY 2009 Matching Funds	FY 10-11 Federal Funds	FY 10-11 Matching Funds	Estimated Project Total
CON			\$41,458	\$10,365							\$51,823
OTH											\$0
PE											\$0
PP											\$0
ROW											\$0
Totals	\$0	\$0	\$41,458	\$10,365	\$0	\$0	\$0	\$0	\$0	\$0	\$51,823

State Highway Administration

Howard County

MD 32, Patuxent Freeway

TIP Id #	66-0501-46	Year of Operation	2009
Agency	State Highway Administration	Project Type	New interchange
Project Category	Highway Capacity	Functional Class	Principal arterial
Conformity Status	Not Exempt	Physical Data	New Interchange
CIP/CTP Page#	HO-1		

Description	Justification
Construct a new interchange at Burntwoods Road.	<p>This project will improve safety and operations and relieve congestion in the heavily traveled corridor.</p> <p>* Could serve to improve conditions for bicycling and/or walking per approved local, regional and/or statewide bicycle and pedestrian planning documents.</p> <p>* In 2004 Plan, Chapter VII.19</p>

Section 1602 High Priority Projects

Phase	Previous Requests		Annual Element		Federal Funding Requests						Project Totals
	Previous Federal Funds	Previous Matching Funds	FY 2007 Federal Funds	FY 2007 Matching Funds	FY 2008 Federal Funds	FY 2008 Matching Funds	FY 2009 Federal Funds	FY 2009 Matching Funds	FY 10-11 Federal Funds	FY 10-11 Matching Funds	Estimated Project Total
CON			\$3,040	\$760							\$3,800
OTH											\$0
PE											\$0
PP											\$0
ROW											\$0
Totals	\$0	\$0	\$3,040	\$760	\$0	\$0	\$0	\$0	\$0	\$0	\$3,800

National Highway System

Phase	Previous Requests		Annual Element		Federal Funding Requests						Project Totals
	Previous Federal Funds	Previous Matching Funds	FY 2007 Federal Funds	FY 2007 Matching Funds	FY 2008 Federal Funds	FY 2008 Matching Funds	FY 2009 Federal Funds	FY 2009 Matching Funds	FY 10-11 Federal Funds	FY 10-11 Matching Funds	Estimated Project Total
CON			\$16,496	\$4,124							\$20,620
OTH											\$0
PE											\$0
PP											\$0
ROW											\$0
Totals	\$0	\$0	\$16,496	\$4,124	\$0	\$0	\$0	\$0	\$0	\$0	\$20,620

US 1, Washington Boulevard

TIP Id #	66-0501-19	Year of Operation	n/a
Agency	State Highway Administration	Project Type	Other
Project Category	Highway Preservation	Functional Class	Principal arterial
Conformity Status	Exempt	Physical Data	11.0 miles / 4-lanes
CIP/CTP Page#	HO-6		

Description	Justification
Study of potential improvements along the US 1 corridor from the Prince George's County Line to the Baltimore County Line, including potential interchange improvements at MD 175, Guilford and Corridor Roads.	Howard County rezoned the entire US 1 corridor and completed a Corridor Revitalization Study which identified several needed improvements along US 1. This study will address the impacts of the rezoning and the Study on the US 1 corridor.

Section 1602 High Priority Projects

Phase	Previous Requests		Annual Element		Federal Funding Requests						Project Totals
	Previous Federal Funds	Previous Matching Funds	FY 2007 Federal Funds	FY 2007 Matching Funds	FY 2008 Federal Funds	FY 2008 Matching Funds	FY 2009 Federal Funds	FY 2009 Matching Funds	FY 10-11 Federal Funds	FY 10-11 Matching Funds	Estimated Project Total
CON											\$0
OTH											\$0
PE											\$0
PP			\$800	\$200							\$1,000
ROW											\$0
Totals	\$0	\$0	\$800	\$200	\$0	\$0	\$0	\$0	\$0	\$0	\$1,000

Surface Transportation Program

Phase	Previous Requests		Annual Element		Federal Funding Requests						Project Totals
	Previous Federal Funds	Previous Matching Funds	FY 2007 Federal Funds	FY 2007 Matching Funds	FY 2008 Federal Funds	FY 2008 Matching Funds	FY 2009 Federal Funds	FY 2009 Matching Funds	FY 10-11 Federal Funds	FY 10-11 Matching Funds	Estimated Project Total
CON											\$0
OTH											\$0
PE											\$0
PP			\$200	\$50							\$250
ROW											\$0
Totals	\$0	\$0	\$200	\$50	\$0	\$0	\$0	\$0	\$0	\$0	\$250

State Highway Administration

Regional

Areawide Enhancement Projects

TIP Id #	60-9903-29	Year of Operation	Ongoing
Agency	State Highway Administration	Project Type	Other
Project Category	Enhancement Program	Functional Class	NA
Conformity Status	Exempt	Physical Data	NA
CIP/CTP Page#	NA		

Description	Justification
Enhancement Program projects include: pedestrian/bicycle facilities; acquisition of scenic easements and historic sites; scenic/historic highway programs; landscaping/beautification; historic preservation; rehabilitation/operation of historic transportation facilities, including railroad facilities and canals; preservation of abandoned railway corridors; archeological planning/research; and mitigation of water pollution due to highway runoff.	Transportation enhancements are projects which add community and environmental value to the transportation system.

Enhancement Funds under STP

Phase	Previous Requests		Annual Element		Federal Funding Requests						Project Totals
	Previous Federal Funds	Previous Matching Funds	FY 2007 Federal Funds	FY 2007 Matching Funds	FY 2008 Federal Funds	FY 2008 Matching Funds	FY 2009 Federal Funds	FY 2009 Matching Funds	FY 10-11 Federal Funds	FY 10-11 Matching Funds	Estimated Project Total
CON			\$4,333	\$1,083	\$4,333	\$1,083	\$4,333	\$1,083	\$8,667	\$2,167	\$27,082
OTH											\$0
PE			\$433	\$108	\$433	\$108	\$433	\$108	\$867	\$217	\$2,707
PP											\$0
ROW			\$433	\$108	\$433	\$108	\$433	\$108	\$867	\$217	\$2,707
Totals	\$0	\$0	\$5,199	\$1,299	\$5,199	\$1,299	\$5,199	\$1,299	\$10,401	\$2,601	\$32,496

Areawide Environmental Projects

TIP Id #	60-9506-38	Year of Operation	Ongoing
Agency	State Highway Administration	Project Type	Environmental other
Project Category	Environmental/Safety	Functional Class	NA
Conformity Status	Exempt	Physical Data	NA
CIP/CTP Page#	NA		

Description	Justification
There are non-capacity improvements which include projects dealing with noise abatement, wetlands, reforestation, landscape planting, scenic beautification, and pedestrian or bicycle facilities.	Will restore important wetlands, enhance the surrounding environment and community, and reduce noise impacts.

National Highway System

Phase	Previous Requests		Annual Element		Federal Funding Requests						Project Totals
	Previous Federal Funds	Previous Matching Funds	FY 2007 Federal Funds	FY 2007 Matching Funds	FY 2008 Federal Funds	FY 2008 Matching Funds	FY 2009 Federal Funds	FY 2009 Matching Funds	FY 10-11 Federal Funds	FY 10-11 Matching Funds	Estimated Project Total
CON			\$667	\$167	\$667	\$167	\$667	\$167	\$667	\$167	\$3,336
OTH											\$0
PE			\$67	\$17	\$67	\$17	\$67	\$17	\$67	\$17	\$336
PP											\$0
ROW			\$67	\$17	\$67	\$17	\$67	\$17	\$67	\$17	\$336
Totals	\$0	\$0	\$801	\$201	\$801	\$201	\$801	\$201	\$801	\$201	\$4,008

Surface Transportation Program

Phase	Previous Requests		Annual Element		Federal Funding Requests						Project Totals
	Previous Federal Funds	Previous Matching Funds	FY 2007 Federal Funds	FY 2007 Matching Funds	FY 2008 Federal Funds	FY 2008 Matching Funds	FY 2009 Federal Funds	FY 2009 Matching Funds	FY 10-11 Federal Funds	FY 10-11 Matching Funds	Estimated Project Total
CON			\$1,000	\$250	\$1,000	\$250	\$1,000	\$250	\$2,000	\$500	\$6,250
OTH											\$0
PE			\$100	\$25	\$100	\$25	\$100	\$25	\$200	\$50	\$625
PP											\$0
ROW			\$100	\$25	\$100	\$25	\$100	\$25	\$200	\$50	\$625
Totals	\$0	\$0	\$1,200	\$300	\$1,200	\$300	\$1,200	\$300	\$2,400	\$600	\$7,500

2007 - 2011 Transportation Improvement Program

State Highway Administration

Environmental/Safety

Areawide Recreational Trails Program

TIP Id #	60-0101-38	Year of Operation	Ongoing
Agency	State Highway Administration	Project Type	Environmental other
Project Category	Environmental/Safety	Functional Class	NA
Conformity Status	Exempt	Physical Data	NA
CIP/CTP Page#	NA		

Description	Justification
The Recreational Trails Program is intended to develop and maintain recreational trails for motorized and nonmotorized recreational trail users. It includes projects that provide for the redesign, reconstruction, non-routine maintenance, or relocation of recreational trails to benefit the natural environment.	These projects will provide environmental enhancement, protection and safety related to the use of recreational trails.

Recreational Trails Program

Phase	Previous Requests		Annual Element		Federal Funding Requests						Project Totals
	Previous Federal Funds	Previous Matching Funds	FY 2007 Federal Funds	FY 2007 Matching Funds	FY 2008 Federal Funds	FY 2008 Matching Funds	FY 2009 Federal Funds	FY 2009 Matching Funds	FY 10-11 Federal Funds	FY 10-11 Matching Funds	Estimated Project Total
CON			\$333	\$83	\$333	\$83	\$333	\$83	\$667	\$167	\$2,082
OTH											\$0
PE			\$33	\$8	\$33	\$8	\$33	\$8	\$67	\$17	\$207
PP											\$0
ROW			\$33	\$8	\$33	\$8	\$33	\$8	\$67	\$17	\$207
Totals	\$0	\$0	\$399	\$99	\$399	\$99	\$399	\$99	\$801	\$201	\$2,496

Areawide Congestion Management

TIP Id #	60-9504-04	Year of Operation	Ongoing
Agency	State Highway Administration	Project Type	Traffic engineering
Project Category	Emission Reduction Strategy	Functional Class	NA
Conformity Status	Exempt	Physical Data	NA
CIP/CTP Page#	NA		

Description	Justification
<p>These improvements include the employment of variable message signs, video for traffic management (CCTV), traffic movement detectors, signal system coordination and remote timing, permanent congestion monitoring systems employed by the CHART program, deployment of local jurisdiction intelligent transportation system (ITS) projects, and the development of park and ride facilities.</p>	<p>These projects will improve safety and traffic flow operations on the existing highway system without major new construction. These projects will also save motorists time by allowing them to avoid traffic congestion. Some of the projects will reduce congestion through the use of ITS technology innovations in communication, advanced traffic management, traveler information, etc.</p> <p>*Supports regional M&O initiatives.</p>

Congestion Mitigation and Air Quality

Phase	Previous Requests		Annual Element		Federal Funding Requests						Project Totals
	Previous Federal Funds	Previous Matching Funds	FY 2007 Federal Funds	FY 2007 Matching Funds	FY 2008 Federal Funds	FY 2008 Matching Funds	FY 2009 Federal Funds	FY 2009 Matching Funds	FY 10-11 Federal Funds	FY 10-11 Matching Funds	Estimated Project Total
CON			\$4,333	\$1,083	\$4,333	\$1,083	\$4,333	\$1,083	\$11,667	\$2,917	\$30,832
OTH											\$0
PE			\$433	\$108	\$433	\$108	\$433	\$108	\$1,167	\$292	\$3,082
PP											\$0
ROW			\$433	\$108	\$433	\$108	\$433	\$108	\$1,167	\$292	\$3,082
Totals	\$0	\$0	\$5,199	\$1,299	\$5,199	\$1,299	\$5,199	\$1,299	\$14,001	\$3,501	\$36,996

Surface Transportation Program

Phase	Previous Requests		Annual Element		Federal Funding Requests						Project Totals
	Previous Federal Funds	Previous Matching Funds	FY 2007 Federal Funds	FY 2007 Matching Funds	FY 2008 Federal Funds	FY 2008 Matching Funds	FY 2009 Federal Funds	FY 2009 Matching Funds	FY 10-11 Federal Funds	FY 10-11 Matching Funds	Estimated Project Total
CON			\$8,333	\$2,083	\$8,333	\$2,083	\$8,333	\$2,083	\$20,000	\$5,000	\$56,248
OTH											\$0
PE			\$833	\$208	\$833	\$208	\$833	\$208	\$2,000	\$500	\$5,623
PP											\$0
ROW			\$833	\$208	\$833	\$208	\$833	\$208	\$2,000	\$500	\$5,623
Totals	\$0	\$0	\$9,999	\$2,499	\$9,999	\$2,499	\$9,999	\$2,499	\$24,000	\$6,000	\$67,494

2007 - 2011 Transportation Improvement Program

State Highway Administration

Highway Preservation

Areawide Safety And Spot Improvements

TIP Id #	60-9508-19	Year of Operation	Ongoing
Agency	State Highway Administration	Project Type	Other
Project Category	Highway Preservation	Functional Class	NA
Conformity Status	Exempt	Physical Data	NA
CIP/CTP Page#	NA		

Description	Justification
These are non-capacity highway improvements which include projects dealing with bypass lanes, acceleration and deceleration lanes, turn lanes, rail crossings, safety improvements, pavement markers, and roundabouts. Other improvements such as slope repairs, drainage improvements, and joint sealings may be included incidental to other safety improvements.	Will improve safety and the flow of traffic, thereby reducing congestion and queuing.

Section 1602 High Priority Projects

Phase	Previous Requests		Annual Element		Federal Funding Requests						Project Totals
	Previous Federal Funds	Previous Matching Funds	FY 2007 Federal Funds	FY 2007 Matching Funds	FY 2008 Federal Funds	FY 2008 Matching Funds	FY 2009 Federal Funds	FY 2009 Matching Funds	FY 10-11 Federal Funds	FY 10-11 Matching Funds	Estimated Project Total
CON			\$333	\$83							\$416
OTH											\$0
PE			\$33	\$8							\$41
PP											\$0
ROW			\$33	\$8							\$41
Totals	\$0	\$0	\$399	\$99	\$0	\$0	\$0	\$0	\$0	\$0	\$498

Interstate Maintenance

Phase	Previous Requests		Annual Element		Federal Funding Requests						Project Totals
	Previous Federal Funds	Previous Matching Funds	FY 2007 Federal Funds	FY 2007 Matching Funds	FY 2008 Federal Funds	FY 2008 Matching Funds	FY 2009 Federal Funds	FY 2009 Matching Funds	FY 10-11 Federal Funds	FY 10-11 Matching Funds	Estimated Project Total
CON			\$667	\$167	\$667	\$167	\$667	\$167	\$3,333	\$833	\$6,668
OTH											\$0
PE			\$67	\$17	\$67	\$17	\$67	\$17	\$333	\$83	\$668
PP											\$0
ROW			\$67	\$17	\$67	\$17	\$67	\$17	\$333	\$83	\$668
Totals	\$0	\$0	\$801	\$201	\$801	\$201	\$801	\$201	\$3,999	\$999	\$8,004

National Highway System

Phase	Previous Requests		Annual Element		Federal Funding Requests						Project Totals
	Previous Federal Funds	Previous Matching Funds	FY 2007 Federal Funds	FY 2007 Matching Funds	FY 2008 Federal Funds	FY 2008 Matching Funds	FY 2009 Federal Funds	FY 2009 Matching Funds	FY 10-11 Federal Funds	FY 10-11 Matching Funds	Estimated Project Total
CON			\$667	\$167	\$667	\$167	\$667	\$167	\$3,333	\$833	\$6,668
OTH											\$0
PE			\$67	\$17	\$67	\$17	\$67	\$17	\$333	\$83	\$668
PP											\$0
ROW			\$67	\$17	\$67	\$17	\$67	\$17	\$333	\$83	\$668
Totals	\$0	\$0	\$801	\$201	\$801	\$201	\$801	\$201	\$3,999	\$999	\$8,004

Surface Transportation Program

Phase	Previous Requests		Annual Element		Federal Funding Requests						Project Totals
	Previous Federal Funds	Previous Matching Funds	FY 2007 Federal Funds	FY 2007 Matching Funds	FY 2008 Federal Funds	FY 2008 Matching Funds	FY 2009 Federal Funds	FY 2009 Matching Funds	FY 10-11 Federal Funds	FY 10-11 Matching Funds	Estimated Project Total
CON			\$8,333	\$2,083	\$8,333	\$2,083	\$6,667	\$1,667	\$16,667	\$4,167	\$50,000
OTH											\$0
PE			\$833	\$208	\$833	\$208	\$667	\$167	\$1,667	\$417	\$5,000
PP											\$0
ROW			\$833	\$208	\$833	\$208	\$667	\$167	\$1,667	\$417	\$5,000
Totals	\$0	\$0	\$9,999	\$2,499	\$9,999	\$2,499	\$8,001	\$2,001	\$20,001	\$5,001	\$60,000

Areawide Urban Reconstruction

TIP Id #	60-9511-19	Year of Operation	Ongoing
Agency	State Highway Administration	Project Type	Other
Project Category	Highway Preservation	Functional Class	NA
Conformity Status	Exempt	Physical Data	NA
CIP/CTP Page#	NA		

Description	Justification
These are non-capacity highway improvements which include projects dealing with drainage, curb and gutter, pavement milling and resurfacing, streetscape, signs, and markings and lighting improvements.	Will improve safety and the flow of traffic, thereby reducing delay, queuing and congestion. This will also enhance the surrounding environment and community.

National Highway System

Phase	Previous Requests		Annual Element		Federal Funding Requests						Project Totals
	Previous Federal Funds	Previous Matching Funds	FY 2007 Federal Funds	FY 2007 Matching Funds	FY 2008 Federal Funds	FY 2008 Matching Funds	FY 2009 Federal Funds	FY 2009 Matching Funds	FY 10-11 Federal Funds	FY 10-11 Matching Funds	Estimated Project Total
CON			\$667	\$167	\$667	\$167	\$667	\$167	\$4,000	\$1,000	\$7,502
OTH											\$0
PE			\$67	\$17	\$67	\$17	\$67	\$17	\$400	\$100	\$752
PP											\$0
ROW			\$67	\$17	\$67	\$17	\$67	\$17	\$400	\$100	\$752
Totals	\$0	\$0	\$801	\$201	\$801	\$201	\$801	\$201	\$4,800	\$1,200	\$9,006

Surface Transportation Program

Phase	Previous Requests		Annual Element		Federal Funding Requests						Project Totals
	Previous Federal Funds	Previous Matching Funds	FY 2007 Federal Funds	FY 2007 Matching Funds	FY 2008 Federal Funds	FY 2008 Matching Funds	FY 2009 Federal Funds	FY 2009 Matching Funds	FY 10-11 Federal Funds	FY 10-11 Matching Funds	Estimated Project Total
CON			\$2,000	\$500	\$2,000	\$500	\$2,000	\$500	\$6,000	\$1,500	\$15,000
OTH											\$0
PE			\$200	\$50	\$200	\$50	\$200	\$50	\$600	\$150	\$1,500
PP											\$0
ROW			\$200	\$50	\$200	\$50	\$200	\$50	\$600	\$150	\$1,500
Totals	\$0	\$0	\$2,400	\$600	\$2,400	\$600	\$2,400	\$600	\$7,200	\$1,800	\$18,000

2007 - 2011 Transportation Improvement Program

State Highway Administration

Highway Preservation

Areawide Bridge Replacement And Rehabilitation

TIP Id #	60-9310-13	Year of Operation	Ongoing
Agency	State Highway Administration	Project Type	Bridge repair/deck replacement
Project Category	Highway Preservation	Functional Class	NA
Conformity Status	Exempt	Physical Data	NA
CIP/CTP Page#	NA		

Description	Justification
These are non-capacity improvements which include structural replacements, deck rehabilitation, superstructure replacements, parapet reconstruction, cleaning and painting, and general maintenance on various state owned bridges as needed in Anne Arundel, Baltimore, Carroll, Harford and Howard counties. A portion of this project may be funded using STP for cleaning and painting.	Will preserve the existing structures, increase safety, and improve highway beautification.

Bridge Replacement and Rehabilitation

Phase	Previous Requests		Annual Element		Federal Funding Requests						Project Totals
	Previous Federal Funds	Previous Matching Funds	FY 2007 Federal Funds	FY 2007 Matching Funds	FY 2008 Federal Funds	FY 2008 Matching Funds	FY 2009 Federal Funds	FY 2009 Matching Funds	FY 10-11 Federal Funds	FY 10-11 Matching Funds	Estimated Project Total
CON			\$12,667	\$3,167	\$12,667	\$3,167	\$12,667	\$3,167	\$26,667	\$6,667	\$80,836
OTH											\$0
PE			\$1,267	\$317	\$1,267	\$317	\$1,267	\$317	\$2,667	\$667	\$8,086
PP											\$0
ROW			\$1,267	\$317	\$1,267	\$317	\$1,267	\$317	\$2,667	\$667	\$8,086
Totals	\$0	\$0	\$15,201	\$3,801	\$15,201	\$3,801	\$15,201	\$3,801	\$32,001	\$8,001	\$97,008

Interstate Maintenance

Phase	Previous Requests		Annual Element		Federal Funding Requests						Project Totals
	Previous Federal Funds	Previous Matching Funds	FY 2007 Federal Funds	FY 2007 Matching Funds	FY 2008 Federal Funds	FY 2008 Matching Funds	FY 2009 Federal Funds	FY 2009 Matching Funds	FY 10-11 Federal Funds	FY 10-11 Matching Funds	Estimated Project Total
CON			\$1,667	\$417	\$1,667	\$417	\$1,667	\$417	\$6,667	\$1,667	\$14,586
OTH											\$0
PE			\$167	\$42	\$167	\$42	\$167	\$42	\$667	\$167	\$1,461
PP											\$0
ROW			\$167	\$42	\$167	\$42	\$167	\$42	\$667	\$167	\$1,461
Totals	\$0	\$0	\$2,001	\$501	\$2,001	\$501	\$2,001	\$501	\$8,001	\$2,001	\$17,508

National Highway System

Phase	Previous Requests		Annual Element		Federal Funding Requests						Project Totals
	Previous Federal Funds	Previous Matching Funds	FY 2007 Federal Funds	FY 2007 Matching Funds	FY 2008 Federal Funds	FY 2008 Matching Funds	FY 2009 Federal Funds	FY 2009 Matching Funds	FY 10-11 Federal Funds	FY 10-11 Matching Funds	Estimated Project Total
CON			\$667	\$167	\$667	\$167	\$667	\$167	\$2,000	\$500	\$5,002
OTH											\$0
PE			\$67	\$17	\$67	\$17	\$67	\$17	\$200	\$50	\$502
PP											\$0
ROW			\$67	\$17	\$67	\$17	\$67	\$17	\$200	\$50	\$502
Totals	\$0	\$0	\$801	\$201	\$801	\$201	\$801	\$201	\$2,400	\$600	\$6,006

Surface Transportation Program

Phase	Previous Requests		Annual Element		Federal Funding Requests						Project Totals
	Previous Federal Funds	Previous Matching Funds	FY 2007 Federal Funds	FY 2007 Matching Funds	FY 2008 Federal Funds	FY 2008 Matching Funds	FY 2009 Federal Funds	FY 2009 Matching Funds	FY 10-11 Federal Funds	FY 10-11 Matching Funds	Estimated Project Total
CON			\$667	\$167	\$667	\$167	\$667	\$167	\$2,000	\$500	\$5,002
OTH											\$0
PE			\$67	\$17	\$67	\$17	\$67	\$17	\$200	\$50	\$502
PP											\$0
ROW			\$67	\$17	\$67	\$17	\$67	\$17	\$200	\$50	\$502
Totals	\$0	\$0	\$801	\$201	\$801	\$201	\$801	\$201	\$2,400	\$600	\$6,006

Areawide Resurfacing And Rehabilitation

TIP Id #	60-9501-11	Year of Operation	Ongoing
Agency	State Highway Administration	Project Type	Road resurfacing/rehabilitation
Project Category	Highway Preservation	Functional Class	NA
Conformity Status	Exempt	Physical Data	NA
CIP/CTP Page#	NA		

Description	Justification
These are non-capacity improvements which include milling, patching, sealing, and resurfacing existing deteriorated state roadways in Anne Arundel, Baltimore, Carroll, Harford, and Howard counties as needed.	Will improve safety and the flow of traffic. This project listing represents a large funding request for many small resurfacing projects throughout the Baltimore region. Project selection is based upon need and is subject to change.

Interstate Maintenance

Phase	Previous Requests		Annual Element		Federal Funding Requests						Project Totals
	Previous Federal Funds	Previous Matching Funds	FY 2007 Federal Funds	FY 2007 Matching Funds	FY 2008 Federal Funds	FY 2008 Matching Funds	FY 2009 Federal Funds	FY 2009 Matching Funds	FY 10-11 Federal Funds	FY 10-11 Matching Funds	Estimated Project Total
CON			\$8,333	\$2,083	\$9,000	\$2,250	\$7,000	\$1,750	\$16,667	\$4,167	\$51,250
OTH											\$0
PE			\$833	\$208	\$900	\$225	\$700	\$175	\$1,667	\$417	\$5,125
PP											\$0
ROW			\$833	\$208	\$900	\$225	\$700	\$175	\$1,667	\$417	\$5,125
Totals	\$0	\$0	\$9,999	\$2,499	\$10,800	\$2,700	\$8,400	\$2,100	\$20,001	\$5,001	\$61,500

National Highway System

Phase	Previous Requests		Annual Element		Federal Funding Requests						Project Totals
	Previous Federal Funds	Previous Matching Funds	FY 2007 Federal Funds	FY 2007 Matching Funds	FY 2008 Federal Funds	FY 2008 Matching Funds	FY 2009 Federal Funds	FY 2009 Matching Funds	FY 10-11 Federal Funds	FY 10-11 Matching Funds	Estimated Project Total
CON			\$8,333	\$2,083	\$9,333	\$2,333	\$6,667	\$1,667	\$21,667	\$5,417	\$57,500
OTH											\$0
PE			\$833	\$208	\$933	\$233	\$667	\$167	\$2,167	\$542	\$5,750
PP											\$0
ROW			\$833	\$208	\$933	\$233	\$667	\$167	\$2,167	\$542	\$5,750
Totals	\$0	\$0	\$9,999	\$2,499	\$11,199	\$2,799	\$8,001	\$2,001	\$26,001	\$6,501	\$69,000

Surface Transportation Program

Phase	Previous Requests		Annual Element		Federal Funding Requests						Project Totals
	Previous Federal Funds	Previous Matching Funds	FY 2007 Federal Funds	FY 2007 Matching Funds	FY 2008 Federal Funds	FY 2008 Matching Funds	FY 2009 Federal Funds	FY 2009 Matching Funds	FY 10-11 Federal Funds	FY 10-11 Matching Funds	Estimated Project Total
CON			\$15,000	\$3,750	\$16,000	\$4,000	\$15,000	\$3,750	\$36,667	\$9,167	\$103,334
OTH											\$0
PE			\$1,500	\$375	\$1,600	\$400	\$1,500	\$375	\$3,667	\$917	\$10,334
PP											\$0
ROW			\$1,500	\$375	\$1,600	\$400	\$1,500	\$375	\$3,667	\$917	\$10,334
Totals	\$0	\$0	\$18,000	\$4,500	\$19,200	\$4,800	\$18,000	\$4,500	\$44,001	\$11,001	\$124,002

2007 - 2011 Transportation Improvement Program

State Highway Administration

Miscellaneous

Morgan State University Transportation Center

TIP Id #	60-0701-99	Year of Operation	n/a
Agency	State Highway Administration	Project Type	Miscellaneous
Project Category	Miscellaneous	Functional Class	NA
Conformity Status	Exempt	Physical Data	NA
CIP/CTP Page#	NA		

Description	Justification
Transportation research, education and technology transfer activities involving university faculty, staff and students.	The project will support research that solves real world transportation problems and meets state and federal transportation objectives.

Other

Phase	Previous Requests		Annual Element		Federal Funding Requests						Project Totals
	Previous Federal Funds	Previous Matching Funds	FY 2007 Federal Funds	FY 2007 Matching Funds	FY 2008 Federal Funds	FY 2008 Matching Funds	FY 2009 Federal Funds	FY 2009 Matching Funds	FY 10-11 Federal Funds	FY 10-11 Matching Funds	Estimated Project Total
CON											\$0
OTH			\$500								\$500
PE											\$0
PP											\$0
ROW											\$0
Totals	\$0	\$0	\$500	\$0	\$0	\$0	\$0	\$0	\$0	\$0	\$500