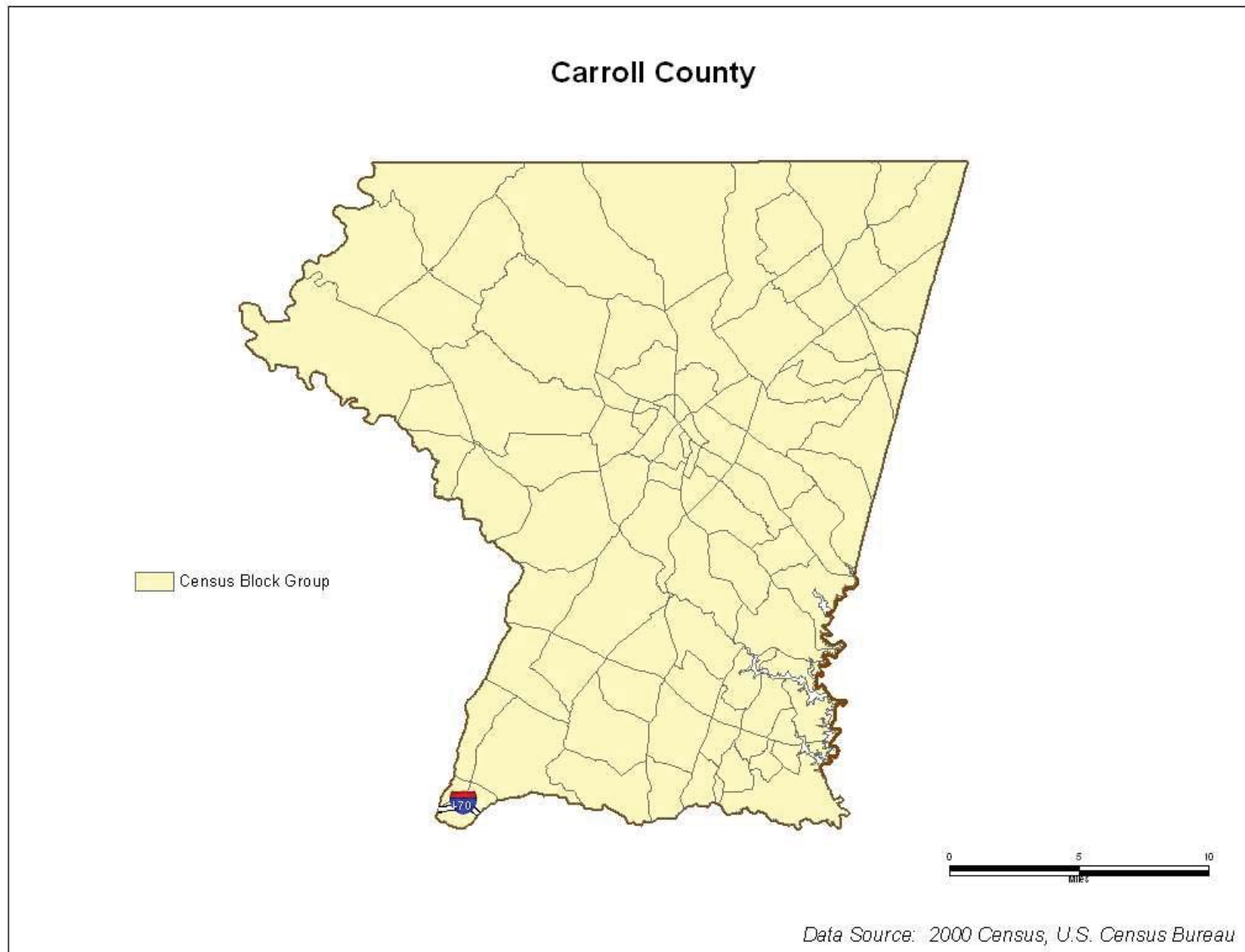


Carroll County



Bixlers Church Road over Big Pipe Creek

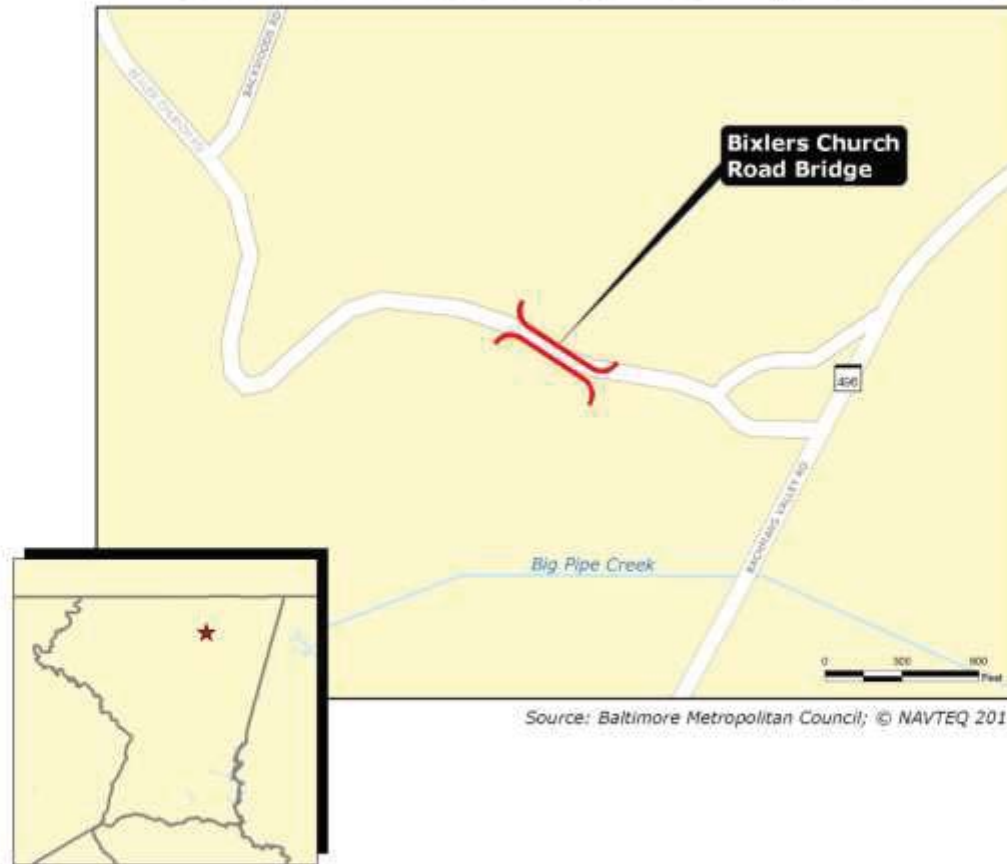
TIP Id #	14-1101-13	Year of Operation	2012
Agency	Local Project	Project Type	Bridge repair/deck replacement
Project Category	Highway Preservation	Functional Class	Local
Conformity Status	Exempt	Physical Data	2 to 2
CIP/CTP Page#	118		

Description	Justification
This project replaces the existing two cell culvert with a new structure.	The replacement will address structural safety issues and deterioration of current structure.

Bridge Replacement and Rehabilitation

Phase	Previous Requests		Annual Element		Federal Funding Requests (\$000)						Project Totals
	Previous Federal Funds	Previous Matching Funds	FY 2012 Federal Funds	FY 2012 Matching Funds	FY 2013 Federal Funds	FY 2013 Matching Funds	FY 2014 Federal Funds	FY 2014 Matching Funds	FY 2015 Federal Funds	FY 2015 Matching Funds	Estimated Project Total
CON					\$478	\$120					\$598
OTH											\$0
PE	\$154	\$31									\$185
PP											\$0
ROW											\$0
Totals	\$154	\$31	\$0	\$0	\$478	\$120	\$0	\$0	\$0	\$0	\$783

Bixlers Church Road Bridge over Big Pipe Creek



Shepherds Mill over Little Pipe Creek

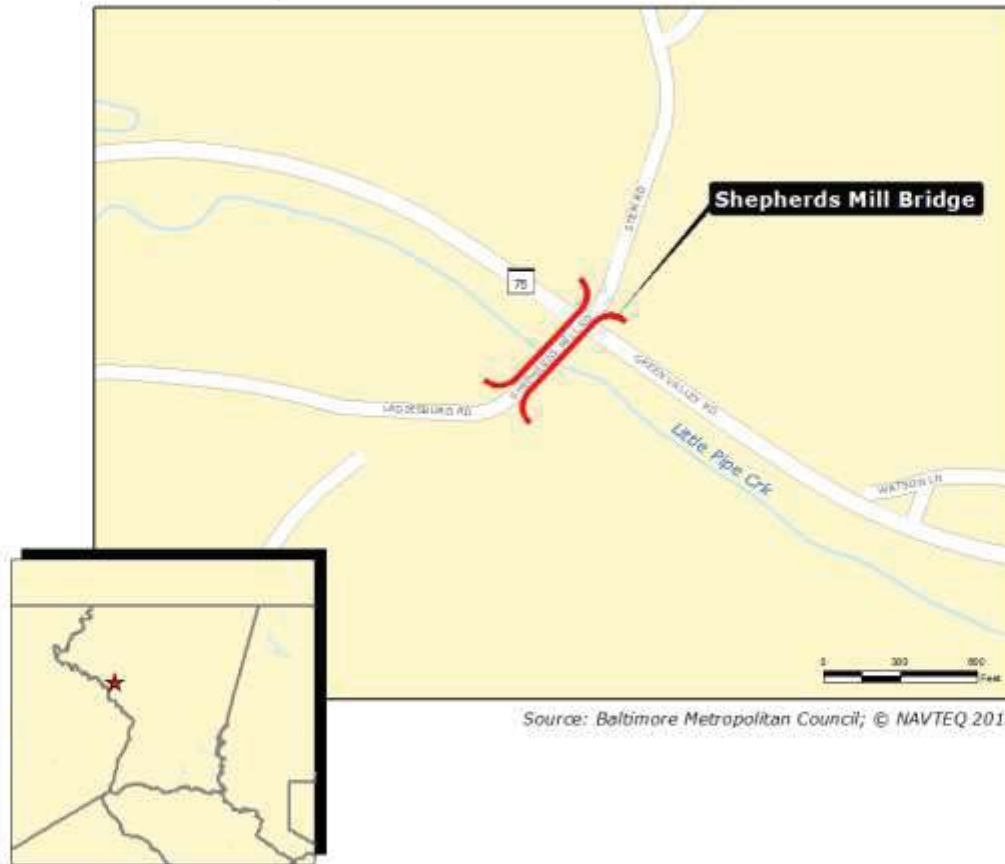
TIP Id #	14-1102-13	Year of Operation	2012
Agency	Local Project	Project Type	Bridge repair/deck replacement
Project Category	Highway Preservation	Functional Class	Collectors, major or minor
Conformity Status	Exempt	Physical Data	2/2 lanes
CIP/CTP Page#	123		

Description	Justification
Rehabilitation of existing bridge, replacing the superstructure support beams and concrete deck, as well as repairs to the abutment and piers.	The replacement will address structural safety issues and deterioration of current structure.

Bridge Replacement and Rehabilitation

Phase	Previous Requests		Annual Element		Federal Funding Requests (\$000)						Project Totals
	Previous Federal Funds	Previous Matching Funds	FY 2012 Federal Funds	FY 2012 Matching Funds	FY 2013 Federal Funds	FY 2013 Matching Funds	FY 2014 Federal Funds	FY 2014 Matching Funds	FY 2015 Federal Funds	FY 2015 Matching Funds	Estimated Project Total
CON			\$2,992	\$748							\$3,740
OTH											\$0
PE	\$200	\$50									\$250
PP											\$0
ROW											\$0
Totals	\$200	\$50	\$2,992	\$748	\$0	\$0	\$0	\$0	\$0	\$0	\$3,990

Shepherds Mill over Little Pipe Creek



Stone Chapel Road over Little Pipe Creek

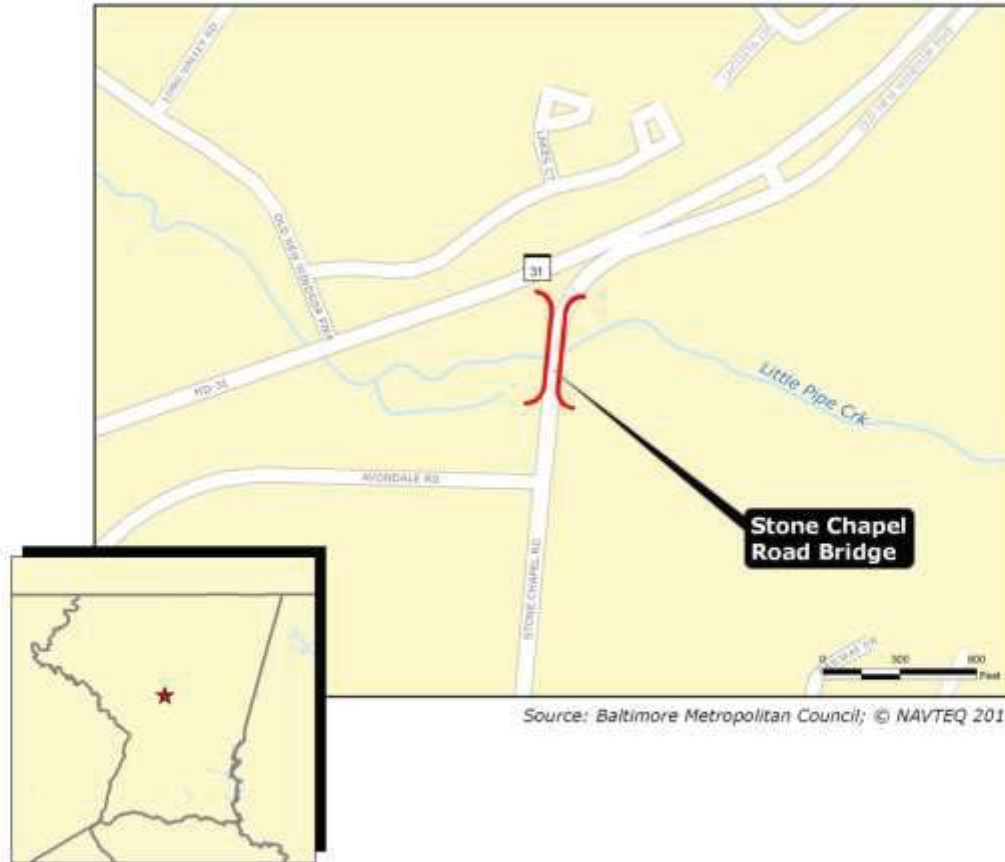
TIP Id #	14-1103-13	Year of Operation	2015
Agency	Local Project	Project Type	Bridge repair/deck replacement
Project Category	Highway Preservation	Functional Class	Collectors, major or minor
Conformity Status	Exempt	Physical Data	2/2 lanes
CIP/CTP Page#	124		

Description	Justification
Rehabilitation of existing bridge to provide efficient access for local truck traffic to MD 31.	The replacement of this structure will allow for the roadway to carry the current legal loads and the weight limit postings will be eliminated. This project will enhance the safety of the county's infrastructure.

Bridge Replacement and Rehabilitation

Phase	Previous Requests		Annual Element		Federal Funding Requests (\$000)						Project Totals
	Previous Federal Funds	Previous Matching Funds	FY 2012 Federal Funds	FY 2012 Matching Funds	FY 2013 Federal Funds	FY 2013 Matching Funds	FY 2014 Federal Funds	FY 2014 Matching Funds	FY 2015 Federal Funds	FY 2015 Matching Funds	Estimated Project Total
CON									\$482	\$121	\$603
OTH											\$0
PE							\$120	\$30			\$150
PP											\$0
ROW											\$0
Totals	\$0	\$0	\$0	\$0	\$0	\$0	\$120	\$30	\$482	\$121	\$753

Stone Chapel Road Bridge over Little Pipe Creek



White Rock Road over Piney Run

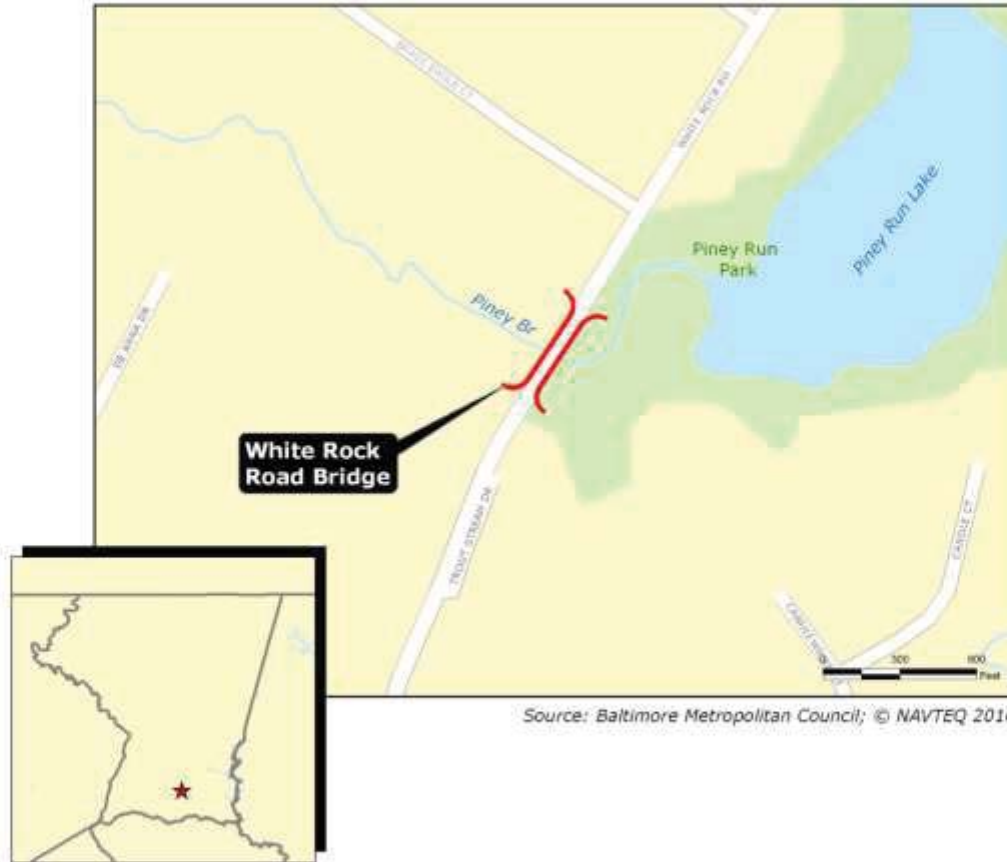
TIP Id #	14-1104-13	Year of Operation	2013
Agency	Local Project	Project Type	Bridge repair/deck replacement
Project Category	Highway Preservation	Functional Class	Collectors, major or minor
Conformity Status	Exempt	Physical Data	2/2 lanes
CIP/CTP Page#	125		

Description	Justification
Rehabilitate the existing two cell culvert, expected to include new concrete end walls to support the steel plate arches.	The replacement will address structural safety issues and deterioration of current structure.

Bridge Replacement and Rehabilitation

Phase	Previous Requests		Annual Element		Federal Funding Requests (\$000)						Project Totals
	Previous Federal Funds	Previous Matching Funds	FY 2012 Federal Funds	FY 2012 Matching Funds	FY 2013 Federal Funds	FY 2013 Matching Funds	FY 2014 Federal Funds	FY 2014 Matching Funds	FY 2015 Federal Funds	FY 2015 Matching Funds	Estimated Project Total
CON			\$642	\$161							\$803
OTH											\$0
PE	\$112	\$28									\$140
PP											\$0
ROW											\$0
Totals	\$112	\$28	\$642	\$161	\$0	\$0	\$0	\$0	\$0	\$0	\$943

White Rock Road Bridge over Piney Run



Biennial Bridge Inspection Program

TIP Id #	14-9401-14	Year of Operation	Ongoing
Agency	Local Project	Project Type	Bridge inspections
Project Category	Highway Preservation	Functional Class	Local
Conformity Status	Exempt	Physical Data	NA
CIP/CTP Page#	119		

Description	Justification
This project includes a field inspection of 132 County owned and maintained structures, completion and submittal of inspection reports to county and state agencies for each structure.	Ensure compliance with National Bridge Inspection Program, preserve highway infrastructure, and maintain safety.

Bridge Replacement and Rehabilitation

Phase	Previous Requests		Annual Element		Federal Funding Requests (\$000)						Project Totals
	Previous Federal Funds	Previous Matching Funds	FY 2012 Federal Funds	FY 2012 Matching Funds	FY 2013 Federal Funds	FY 2013 Matching Funds	FY 2014 Federal Funds	FY 2014 Matching Funds	FY 2015 Federal Funds	FY 2015 Matching Funds	Estimated Project Total
CON											\$0
OTH	\$300				\$350				\$350		\$1,000
PE											\$0
PP											\$0
ROW											\$0
Totals	\$300	\$0	\$0	\$0	\$350	\$0	\$0	\$0	\$350	\$0	\$1,000