

Reconciliation of Population, Labor Force and Job Growth in the BMC and Washington COG Planning Regions

**Technical Committee and
Cooperative Forecasting Group
Joint Meeting**

September 15, 2004

Maryland Department of Planning

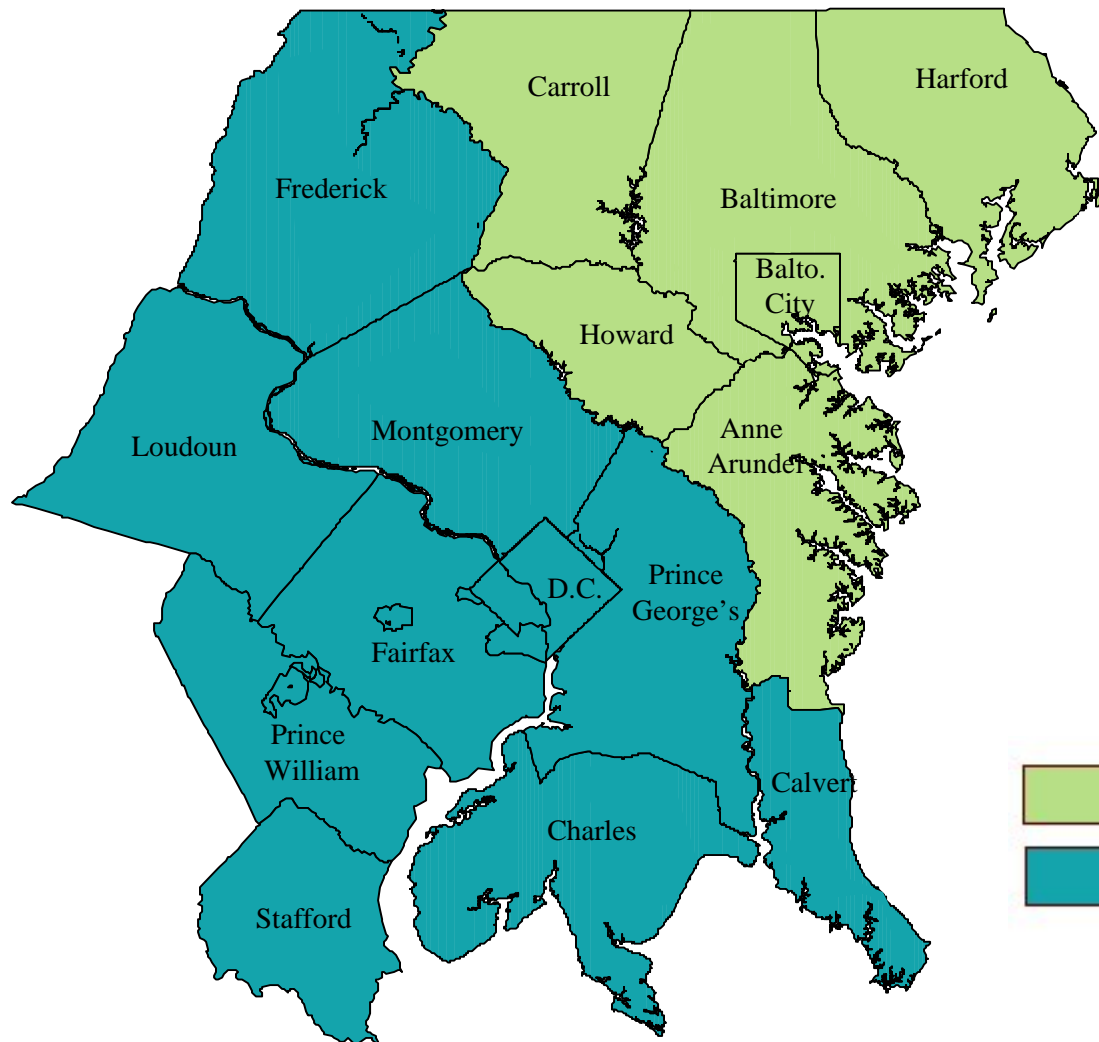


Components of Reconciliation

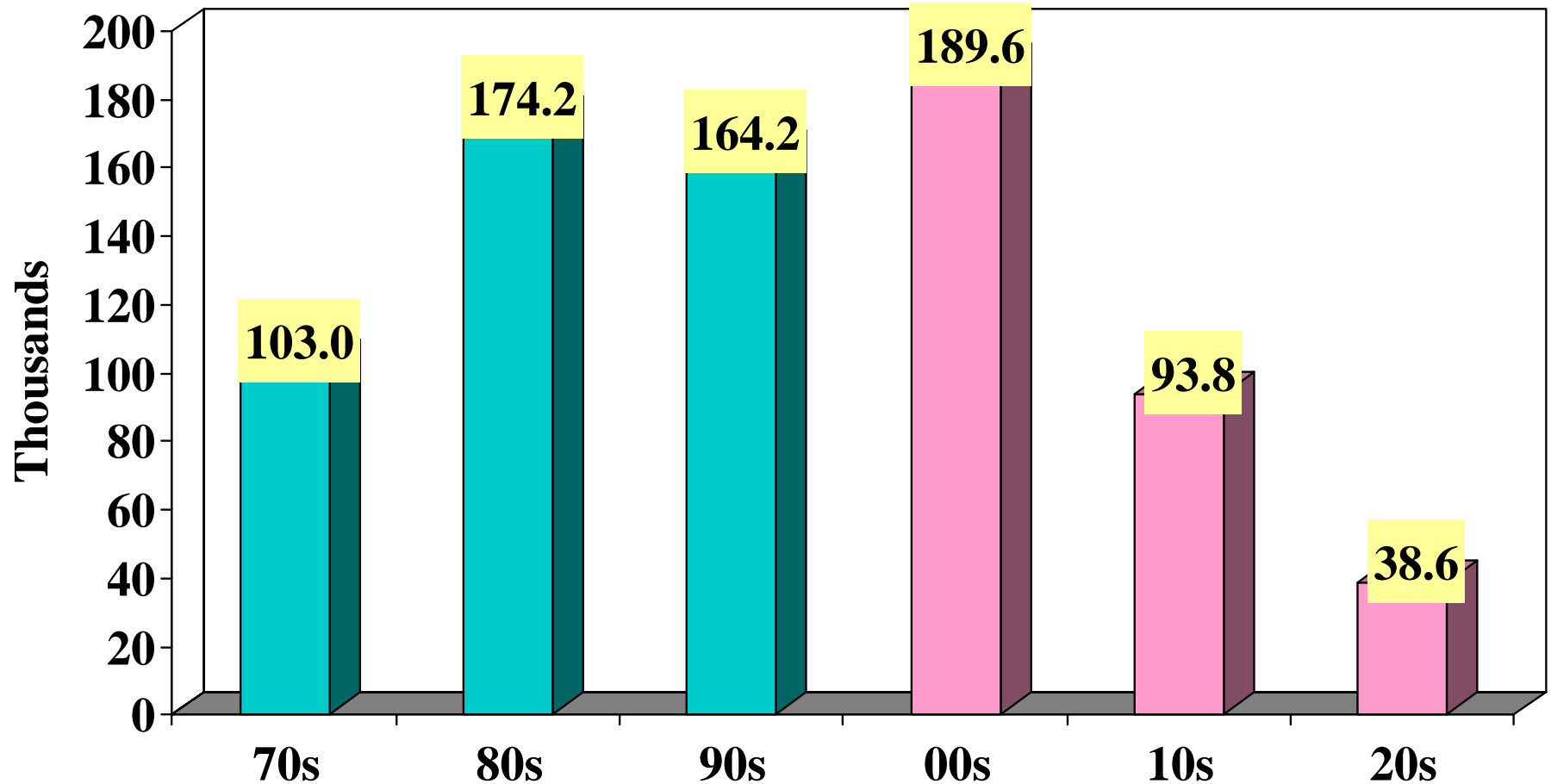
- Population by Age and Sex
- Labor Force by Age and Sex
- Jobs by Place of Work
- Net Commutation

What Was Used

- Round 6A population for BMC jurisdictions
- Round 6.4A population for WashCog Jurisdictions
- MDP population by age distributions for MD jurisdictions
- VEC population by age distributions for WashCog VA Jurisdictions; U.S. Census Bureau for D.C.
- MDP projected LFPRs by age
- Rnd 6A and Rnd 6.4A changes in jobs applied to BEA 2000 base for all jurisdictions

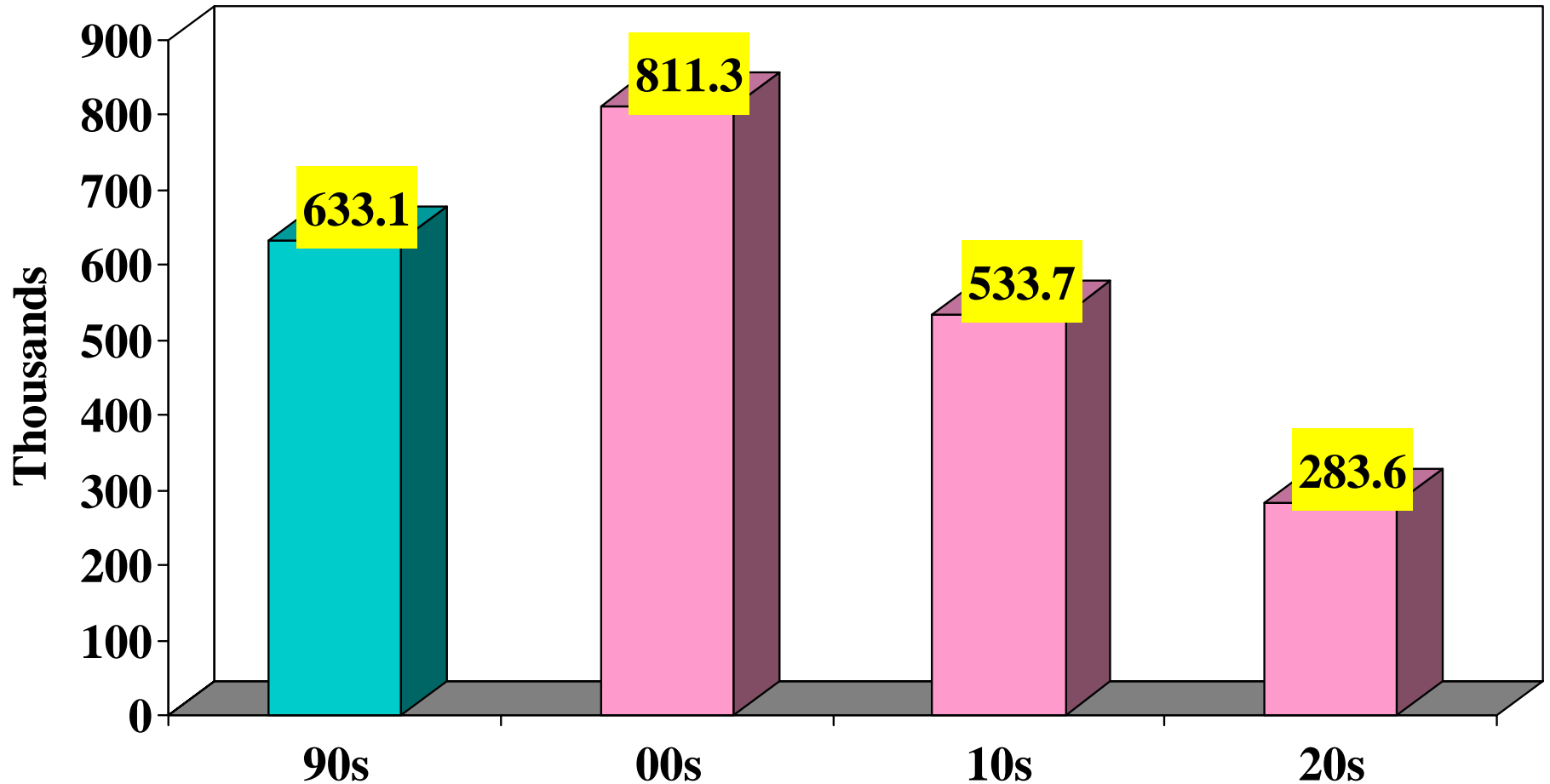


Population Change, Baltimore Region, Actual and RND 6A Projections



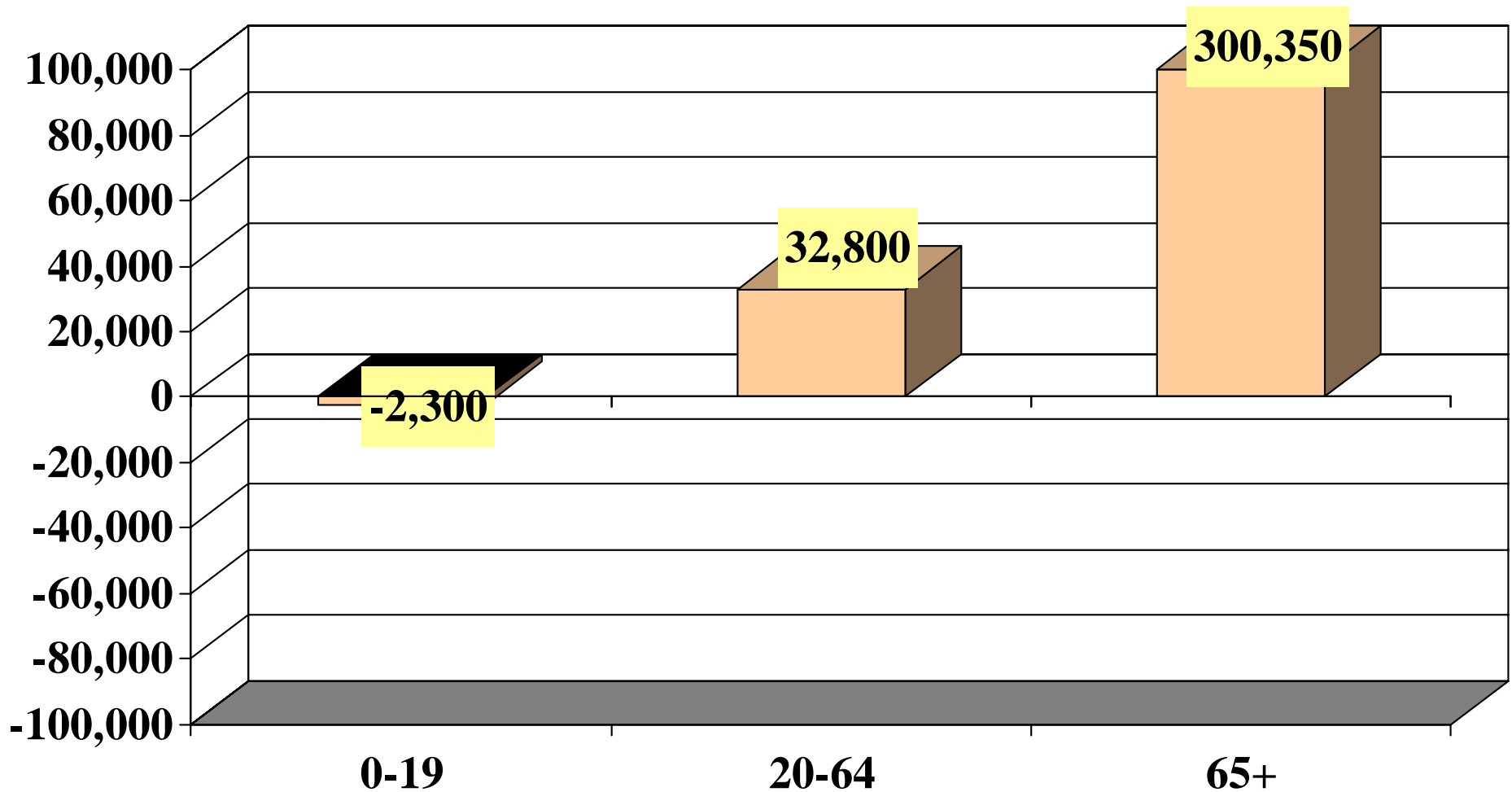
Source: U.S. Census Bureau and local planning offices

Population Change, Wash COG Region, Actual and RND 6.4A Projections



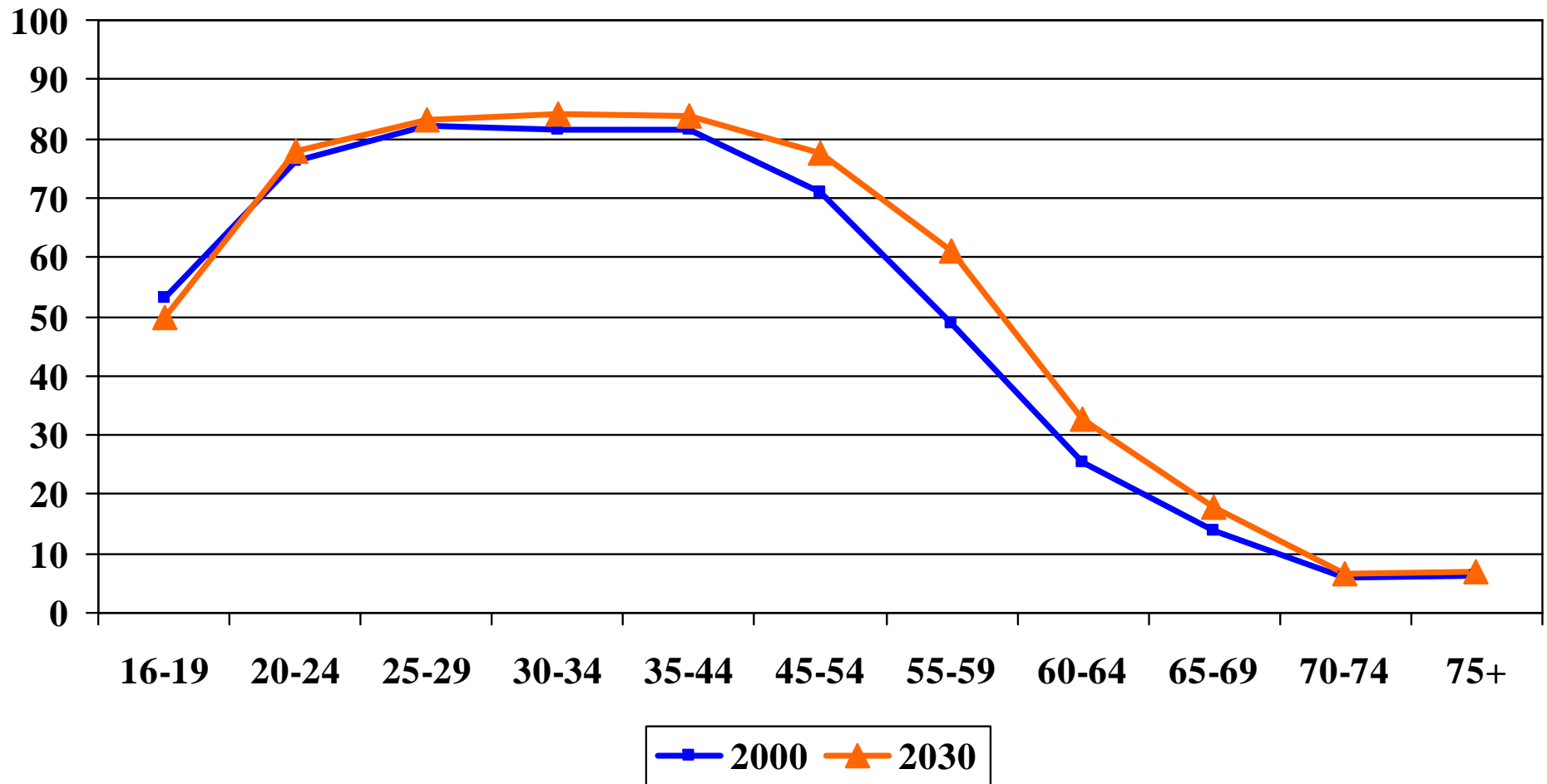
Source: U.S. Census Bureau and local planning offices

Population Change in the Baltimore Region by Major Age Cohorts, 2000 - 2030



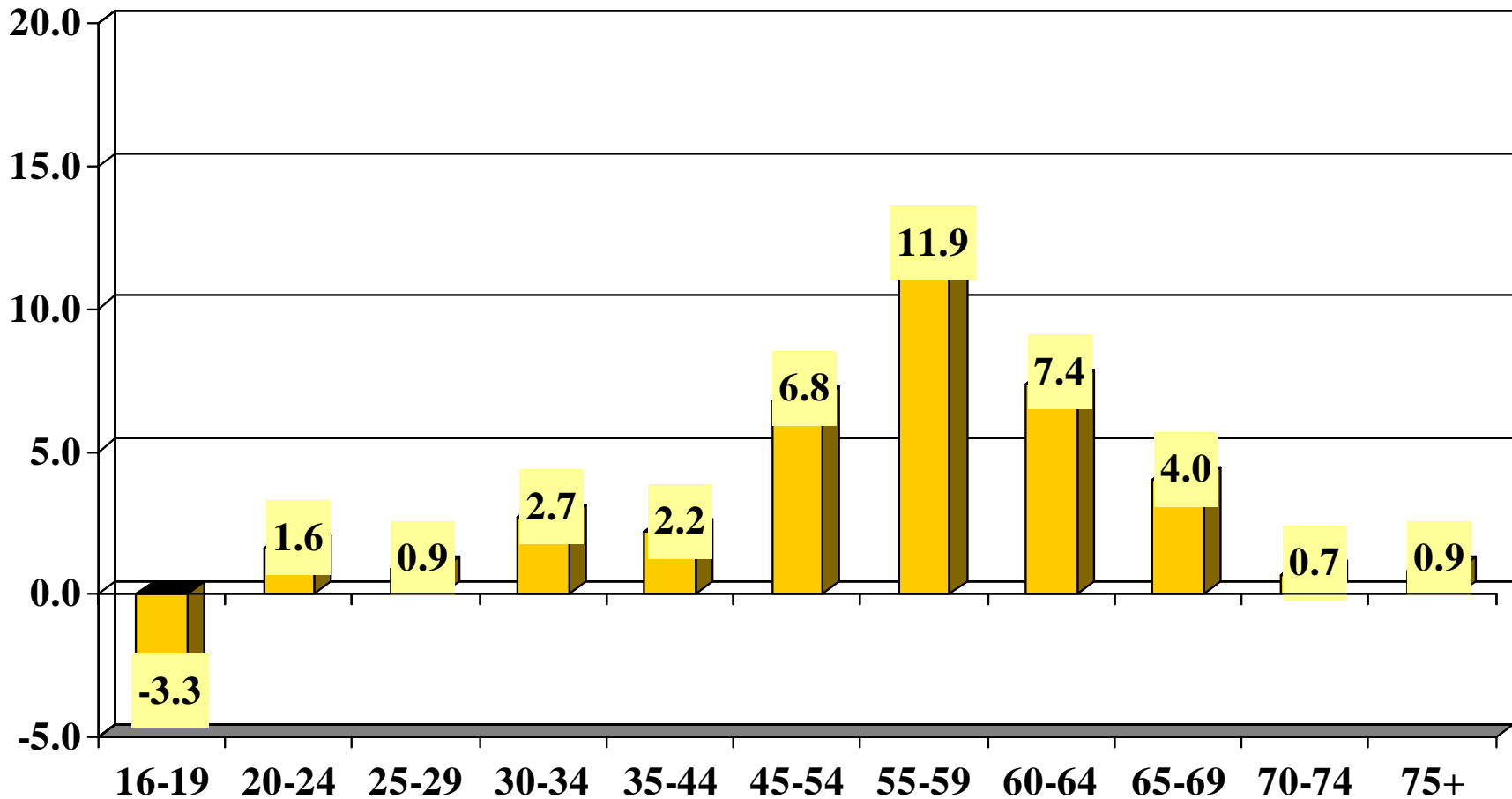
Source: Maryland Department of Planning

Labor Force Participation Rates by Age in the Baltimore Region, 2000 & 2030



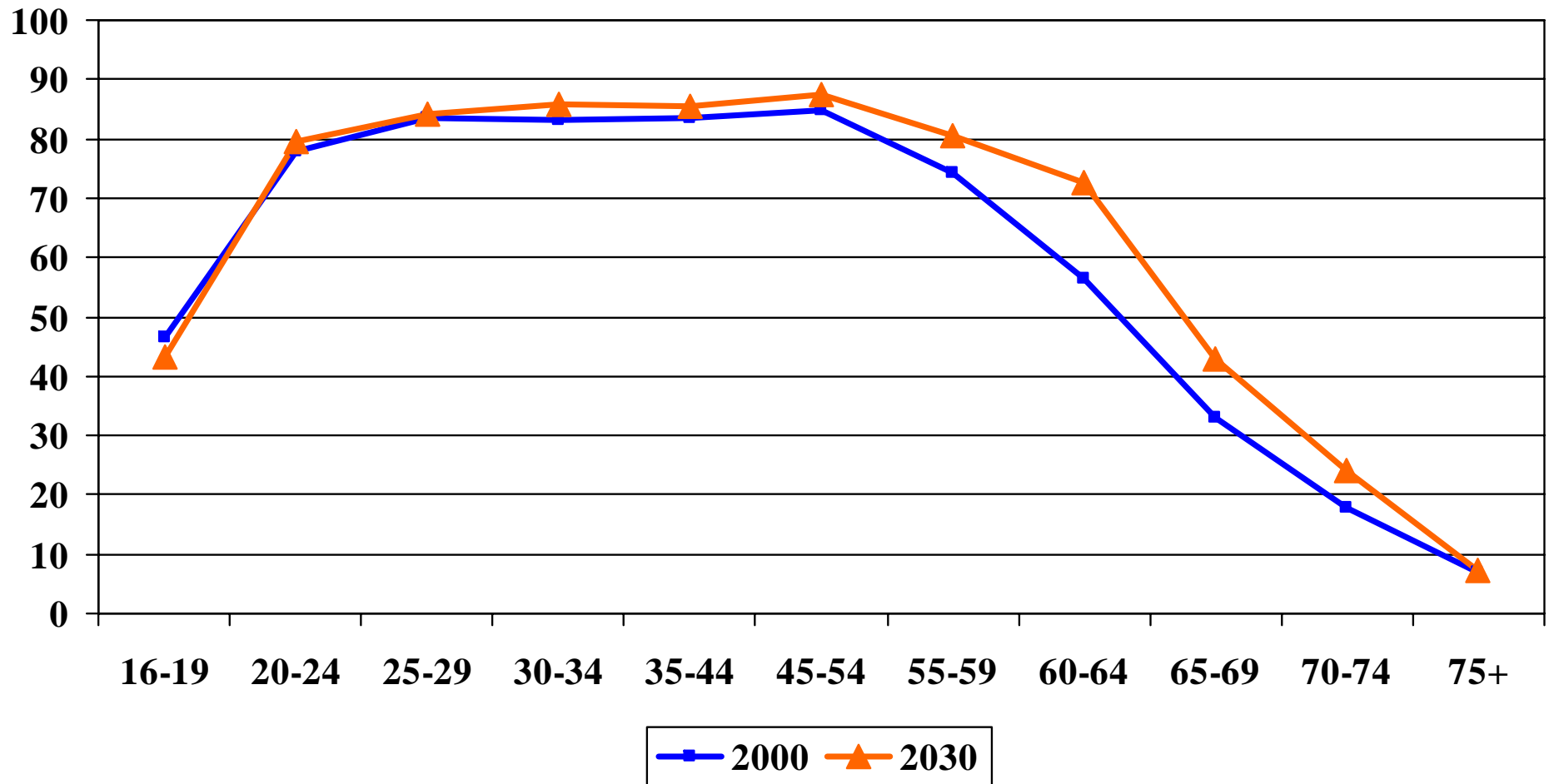
Prepared by the Maryland Department of Planning, from U.S. Census Data

Projected Percentage Point Change in L.F.P.Rs in the Baltimore Region by Age, 2000 - 2030



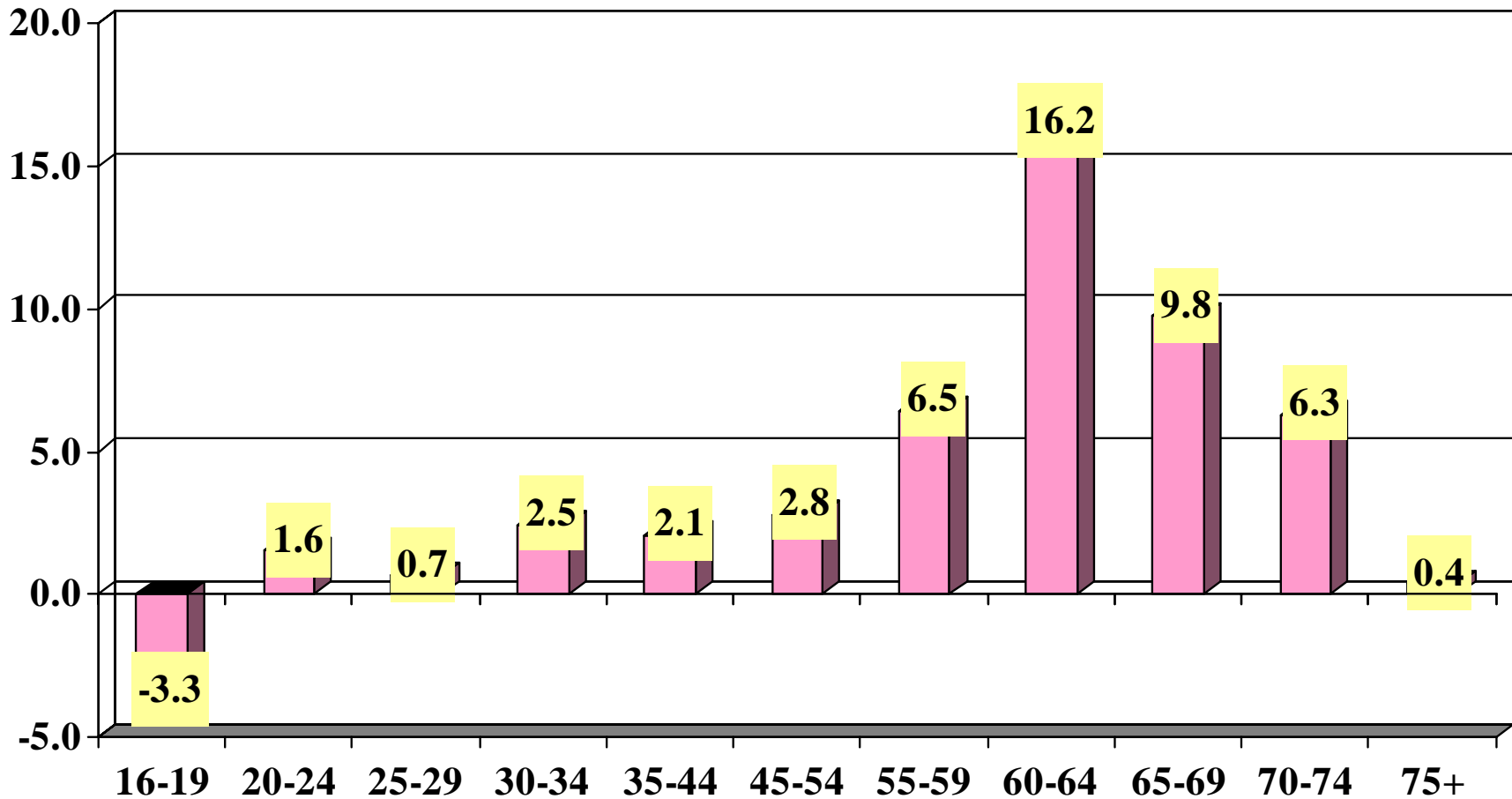
Prepared by the Maryland Department of Planning

Labor Force Participation Rates by Age in the WashCOG Region, 2000 & 2030



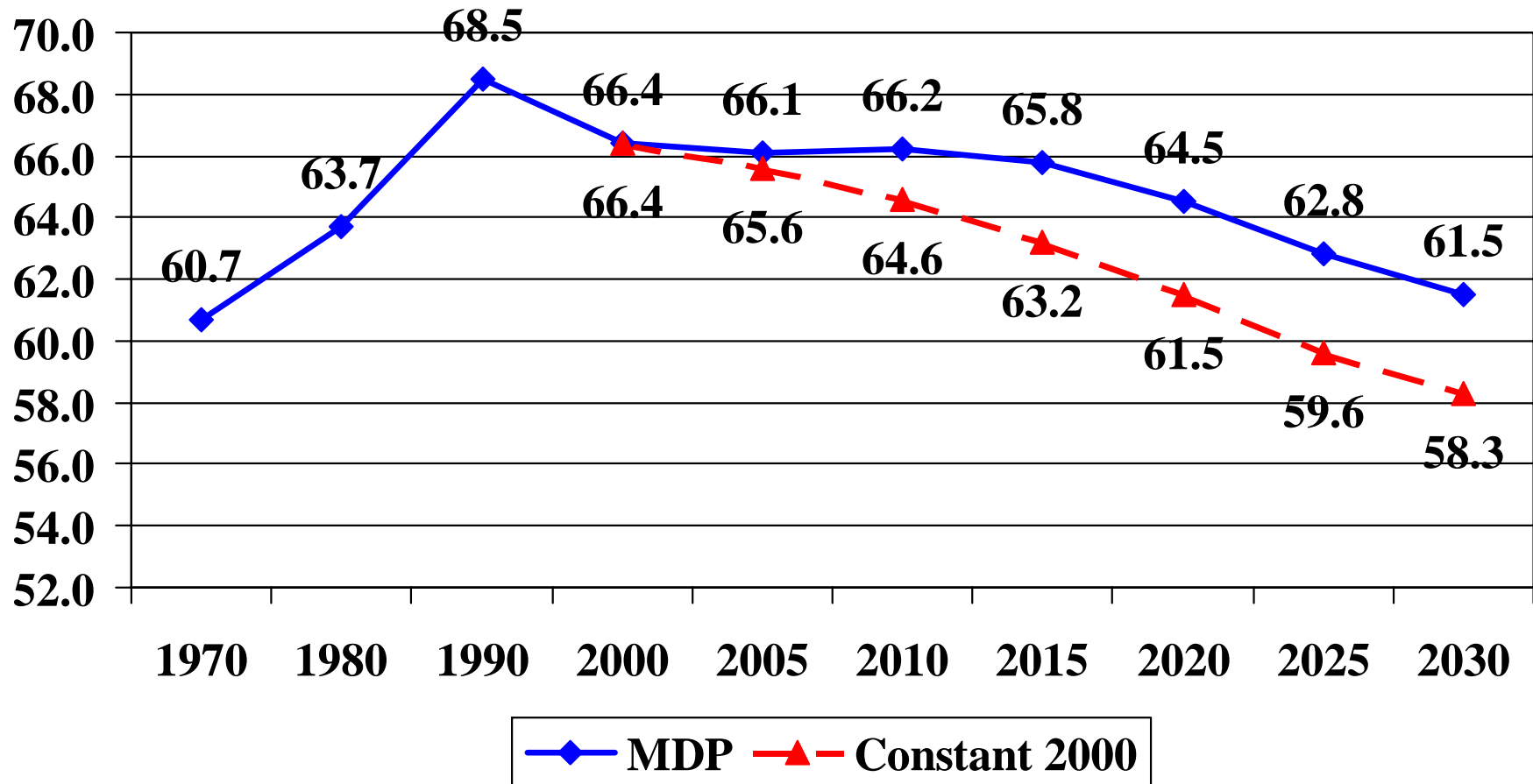
Prepared by the Maryland Department of Planning, from U.S. Census Data

Projected Percentage Point Change in L.F.P.Rs in the Wash COG Region by Age, 2000 - 2030



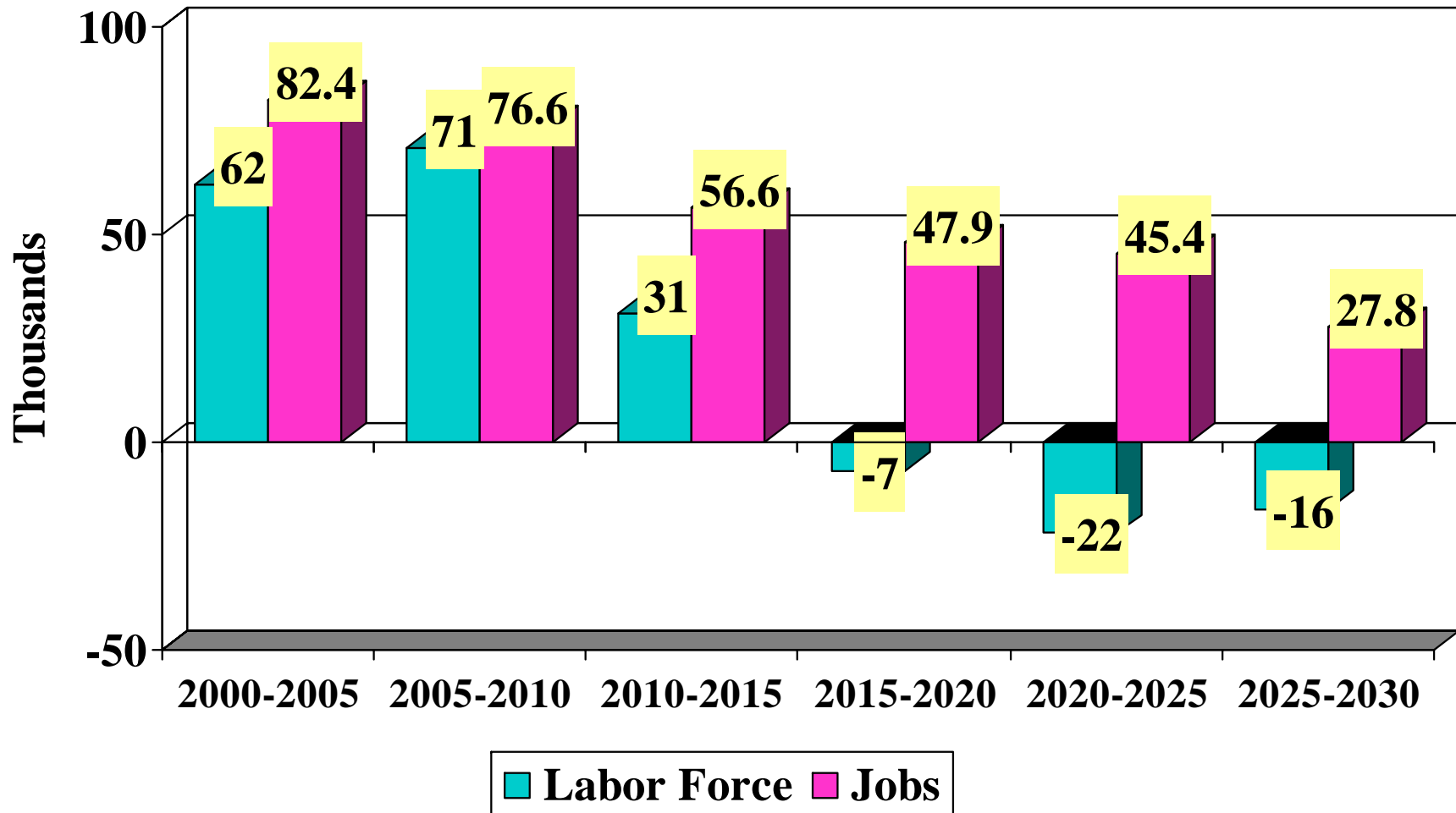
Prepared by the Maryland Department of Planning

LFPRs: MDP Projections vs. Constant 2000 LFPRs Baltimore Region



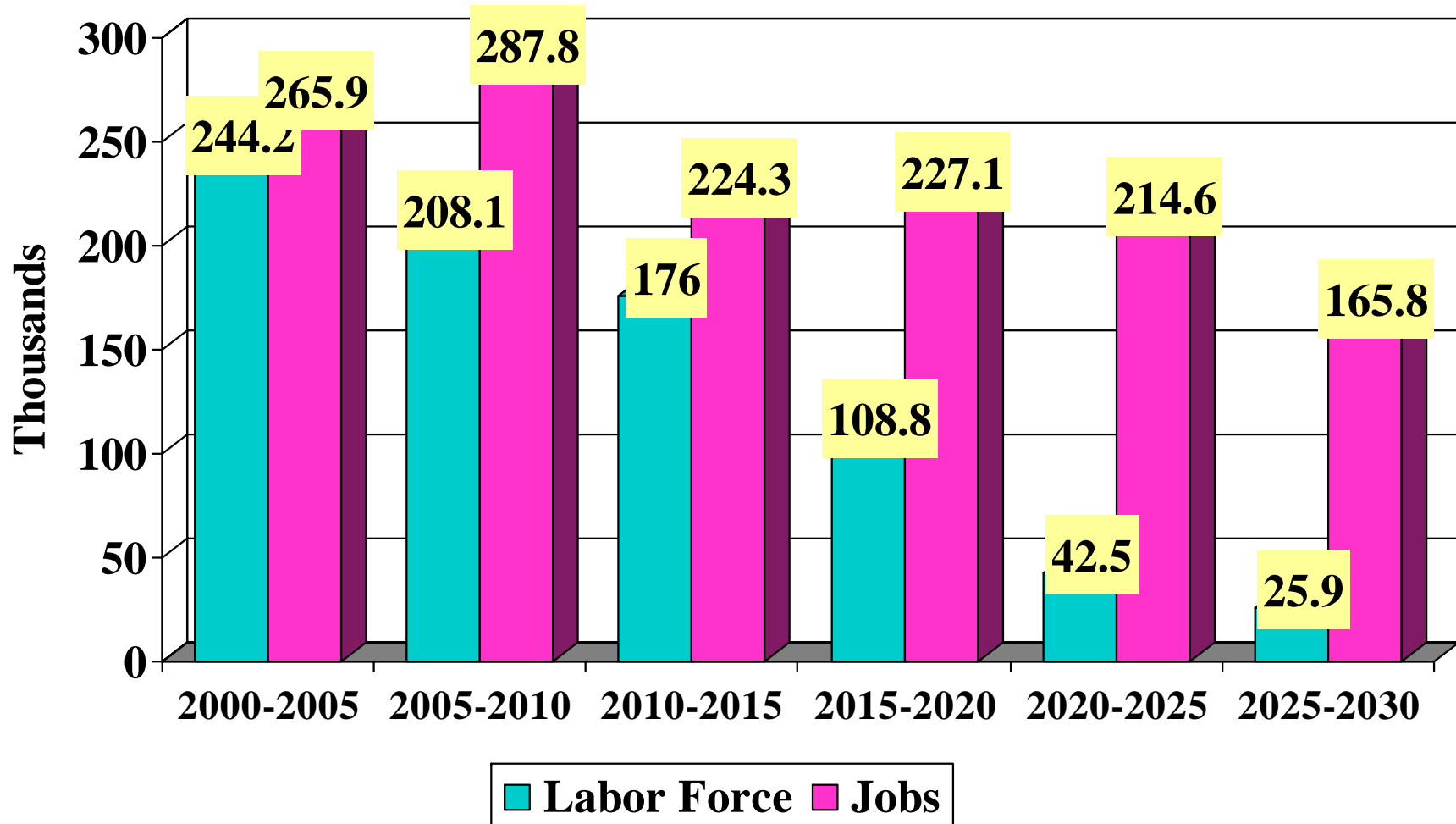
Source: Maryland Department of Planning

Projected Total Labor Force and Job Growth in the Baltimore Region



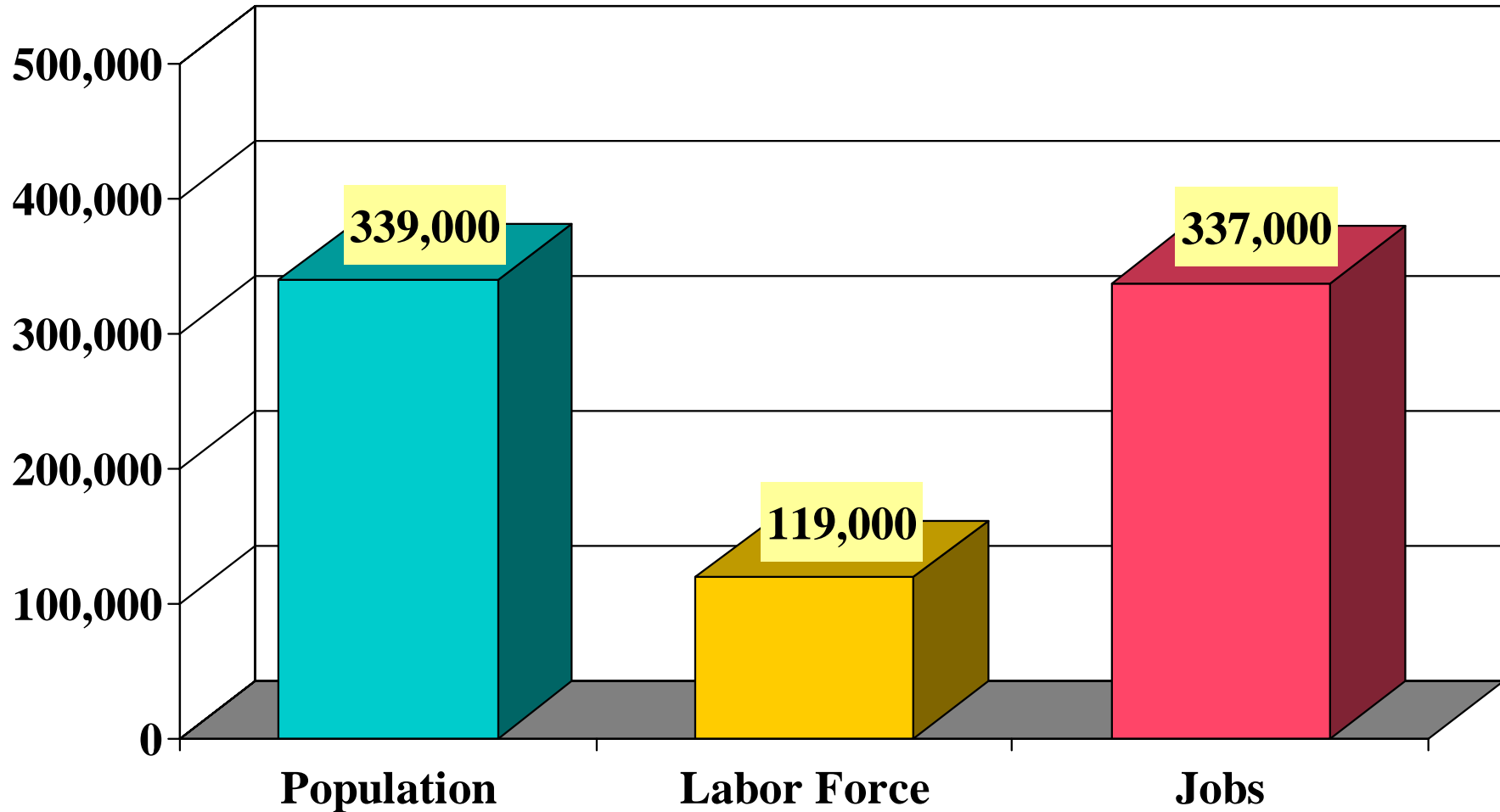
Source: The Maryland Department of Planning and local planning offices

Projected Total Labor Force and Job Growth in the WashCog Planning Region



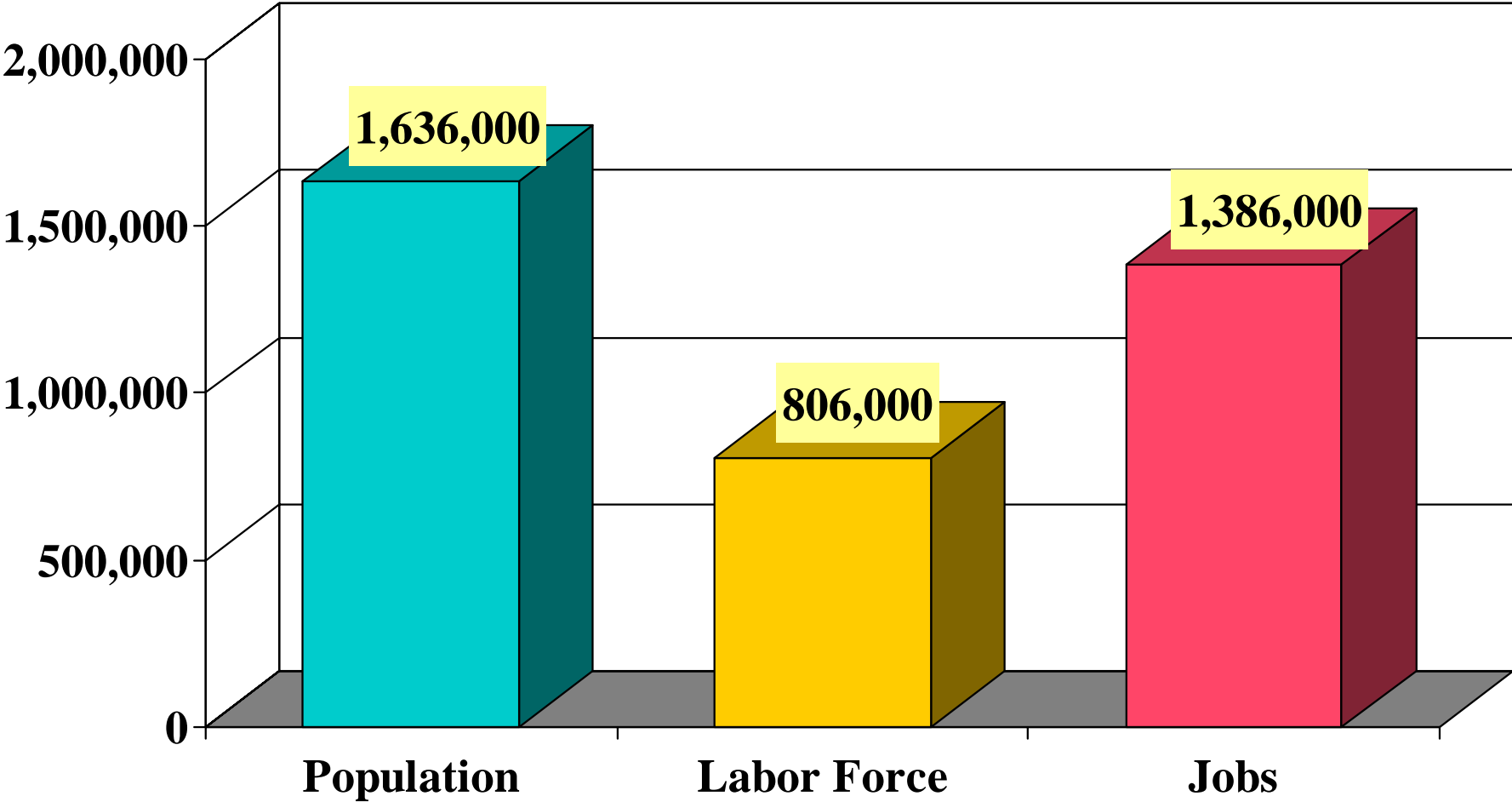
Source: The Maryland Department of Planning and local planning offices

Projected Population, Labor Force and Job Growth in the Baltimore Region, 2000-2030



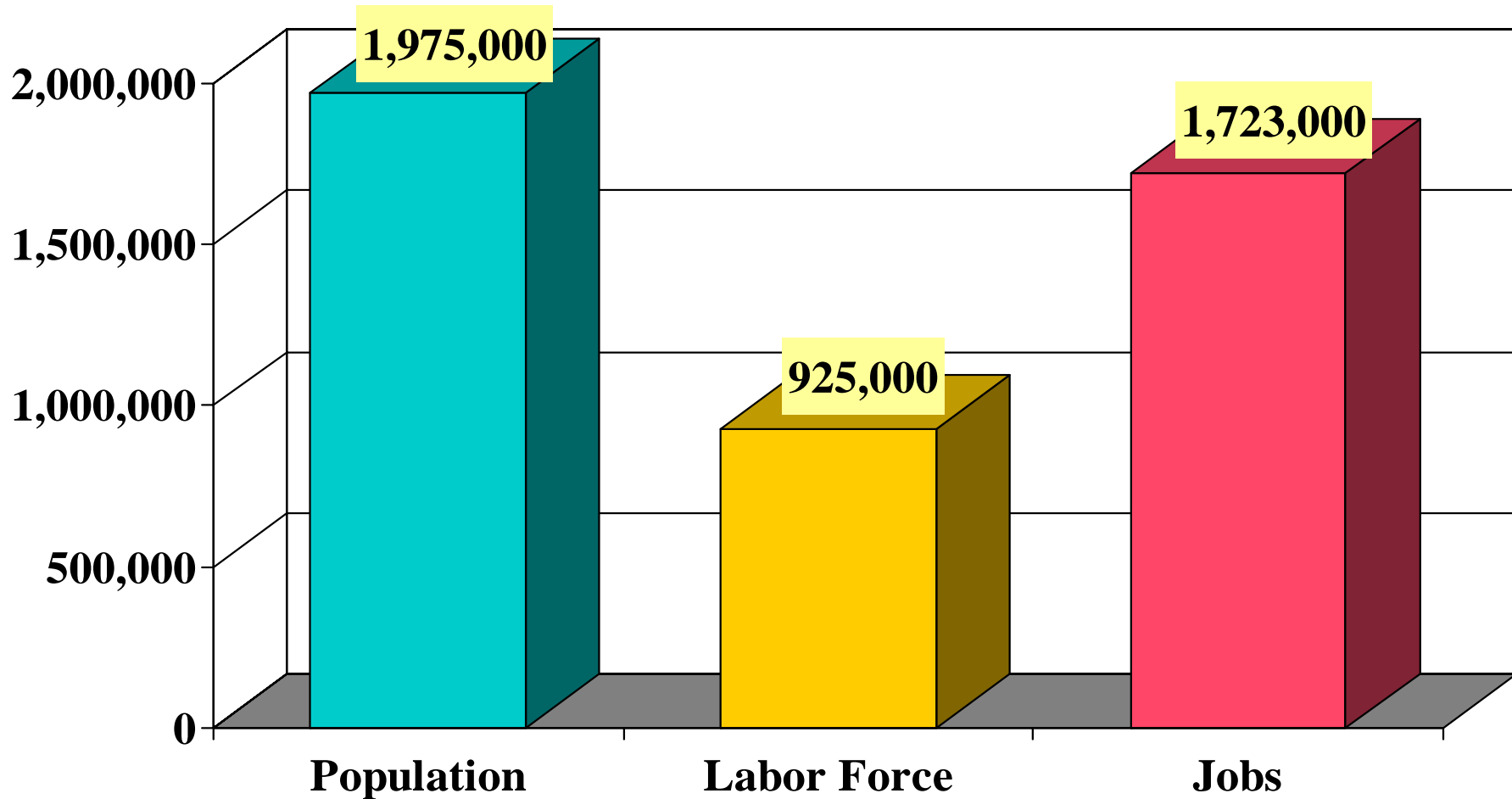
Source: The Maryland Department of Planning and local planning offices

Projected Population, Labor Force and Job Growth in the Washington COG Planning Region, 2000-2030



Source: The Maryland Department of Planning and local planning offices

Projected Pop, LF and Job Growth in the Combined Baltimore and Washington COG Planning Regions, 2000-2030

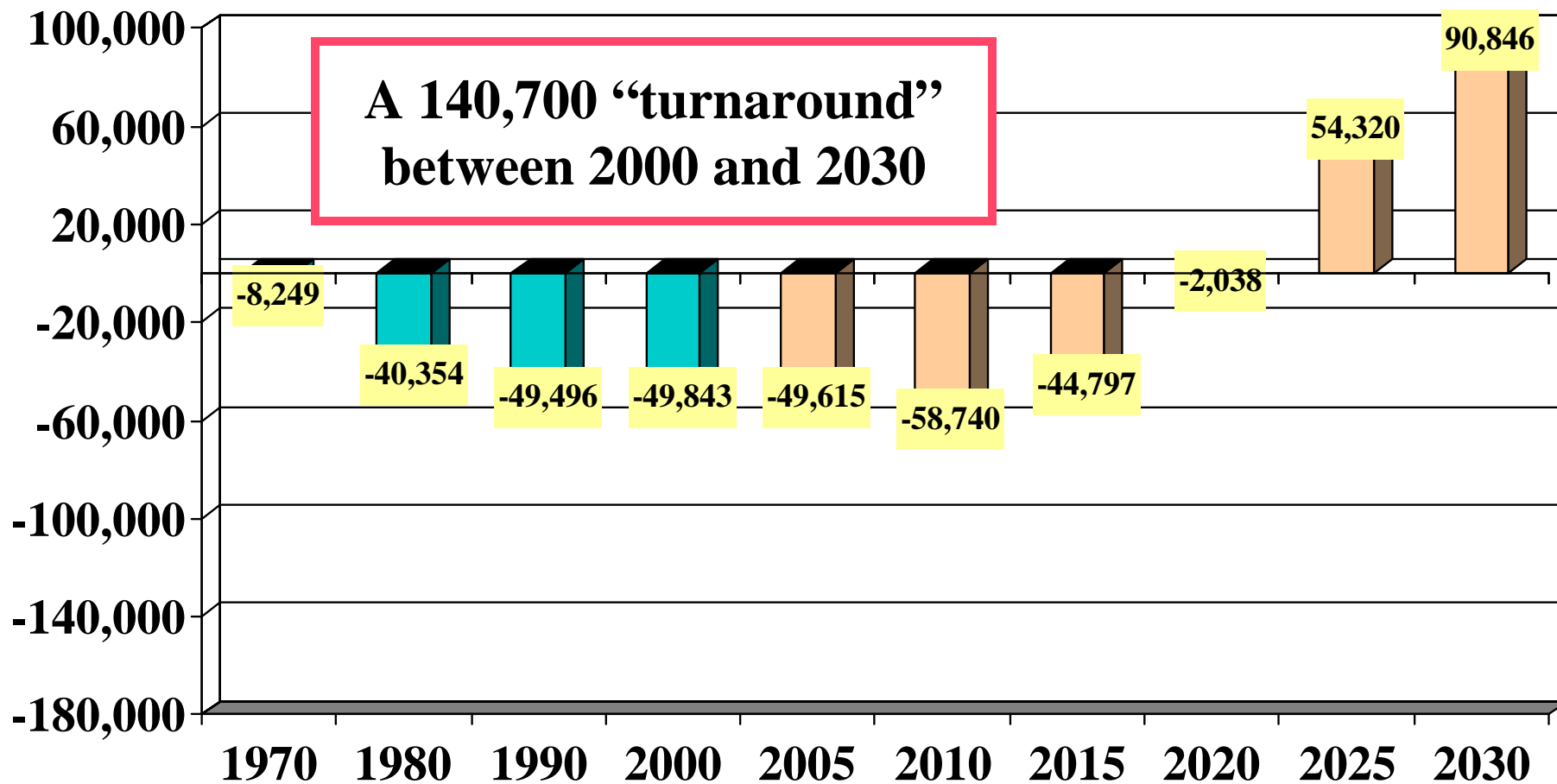


Source: The Maryland Department of Planning and local planning offices

Reconciliation Process

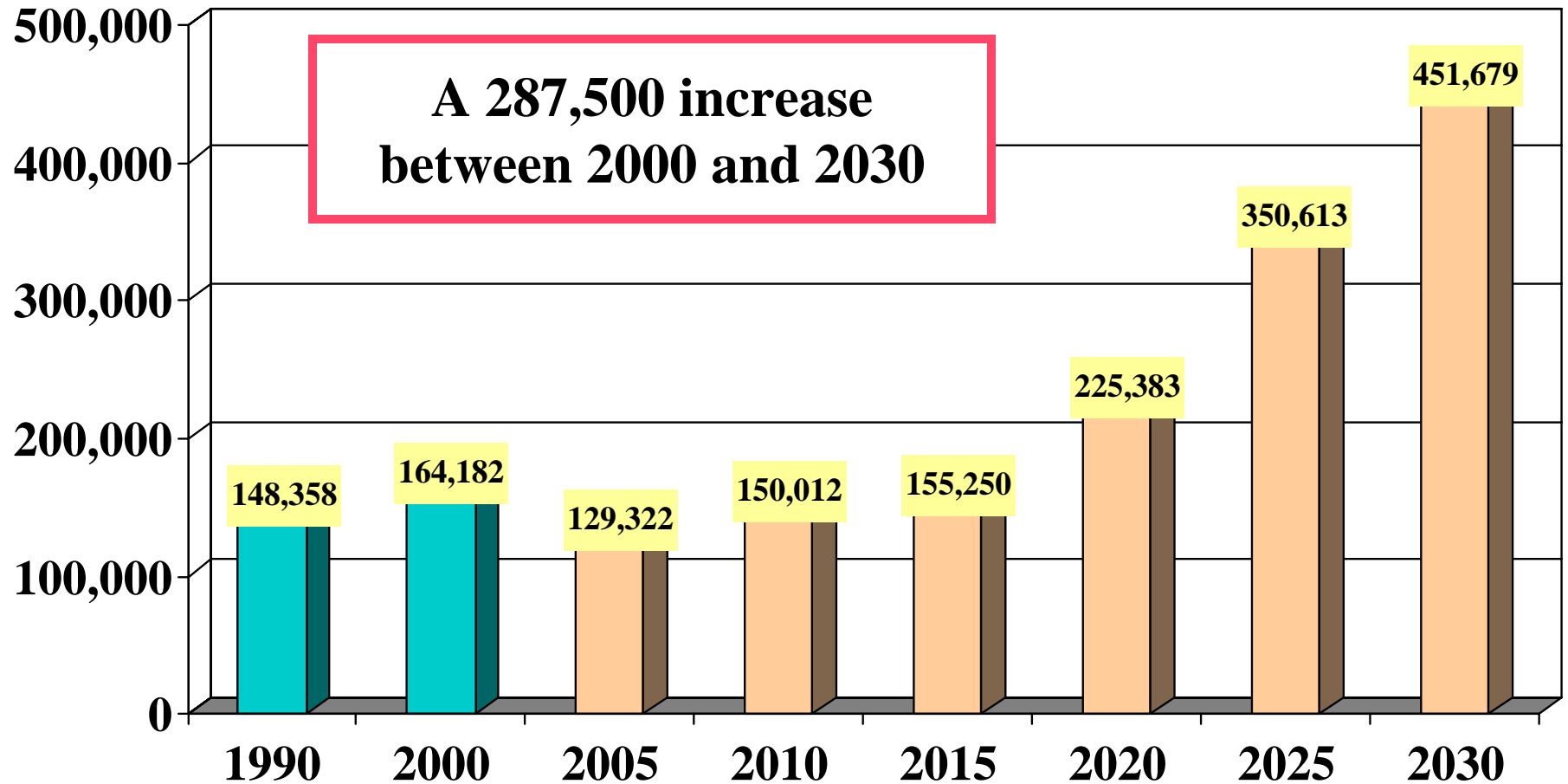
- Given population, labor force and job projections
- To balance: allow net commutation to match jobs and labor force differences

Net Commutation for the Baltimore Region



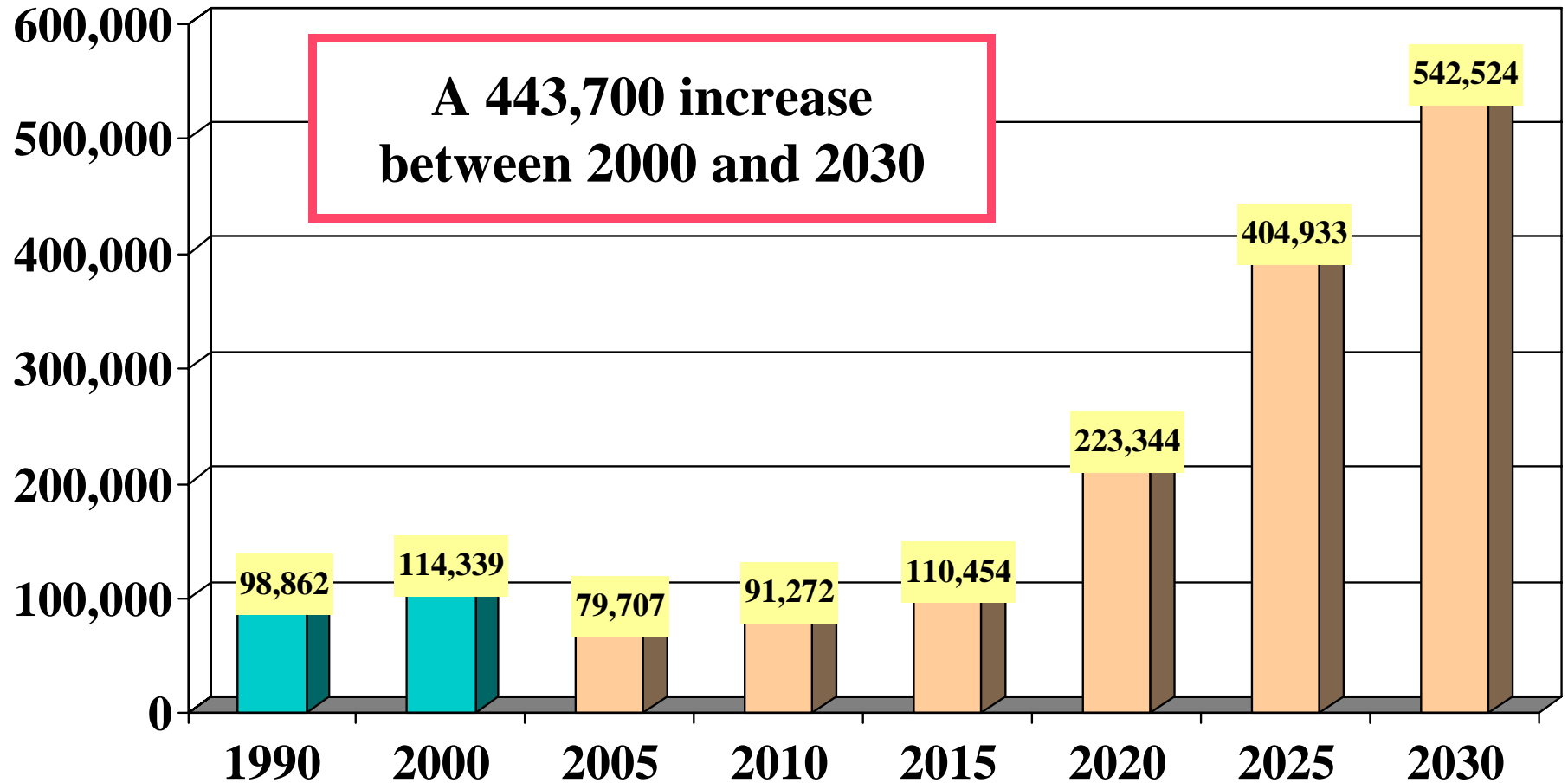
Source: U.S. Census, U.S. BEA and the Maryland Department of Planning

Net Commutation for the Washington COG Region



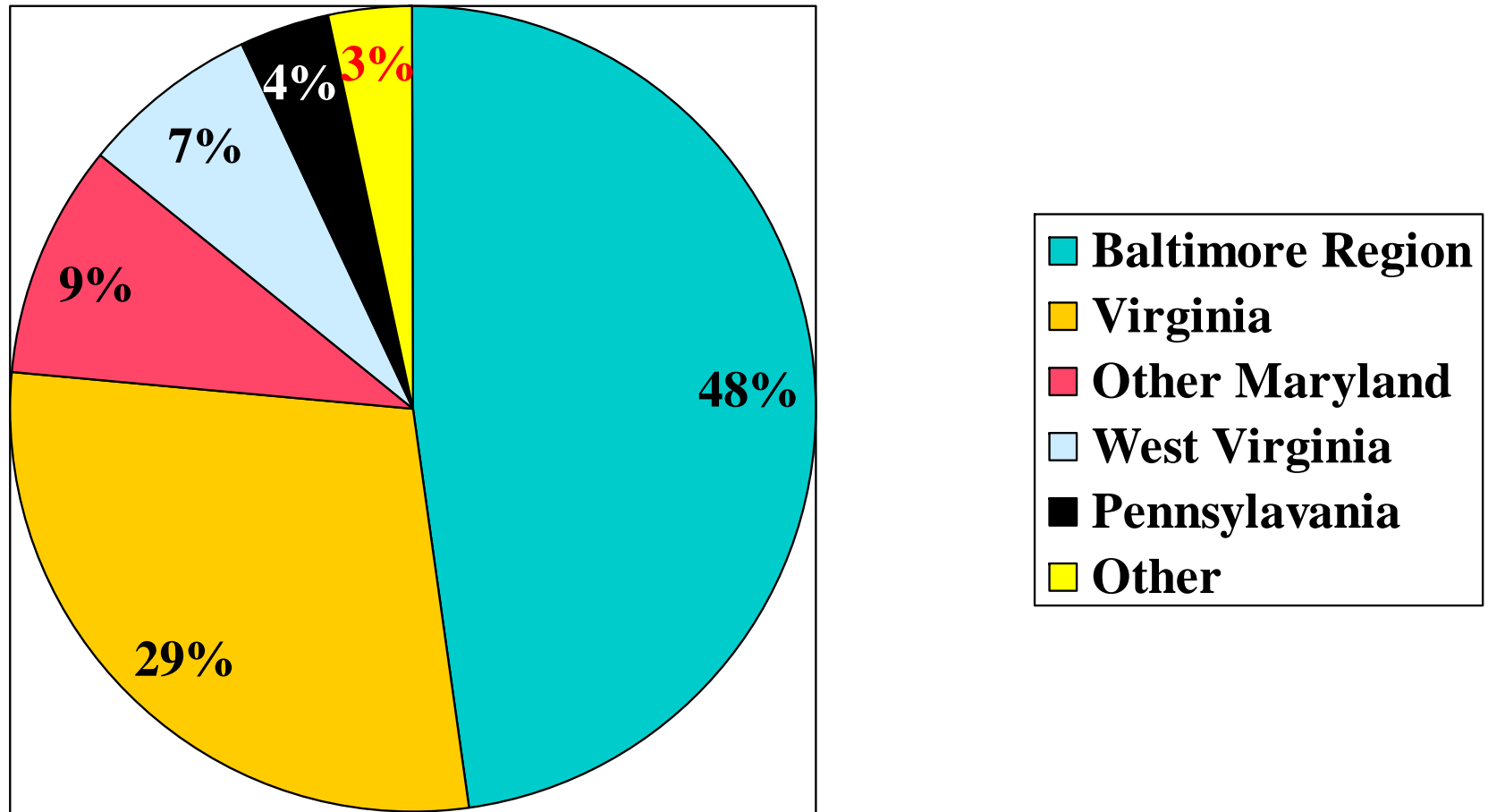
Source: U.S. Census, U.S. BEA and the Maryland Department of Planning

Net Commutation for the Baltimore Region and Washington COG Region



Source: U.S. Census, U.S. BEA and the Maryland Department of Planning

Percent of Net Commuters into Washington COG Region in 2000



Source: The MNCPPC from U.S. Census,

Plausibility of Population, Labor Force and Jobs Balance ?

- **Demographic perspective**
- **Infrastructure perspective**

JOBS = “GOOD”



PEOPLE = “BAD”

