



Harbor Crossings Traffic Management Study

Division of Capital Planning
Maryland Transportation
Authority
May 2007



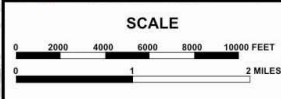
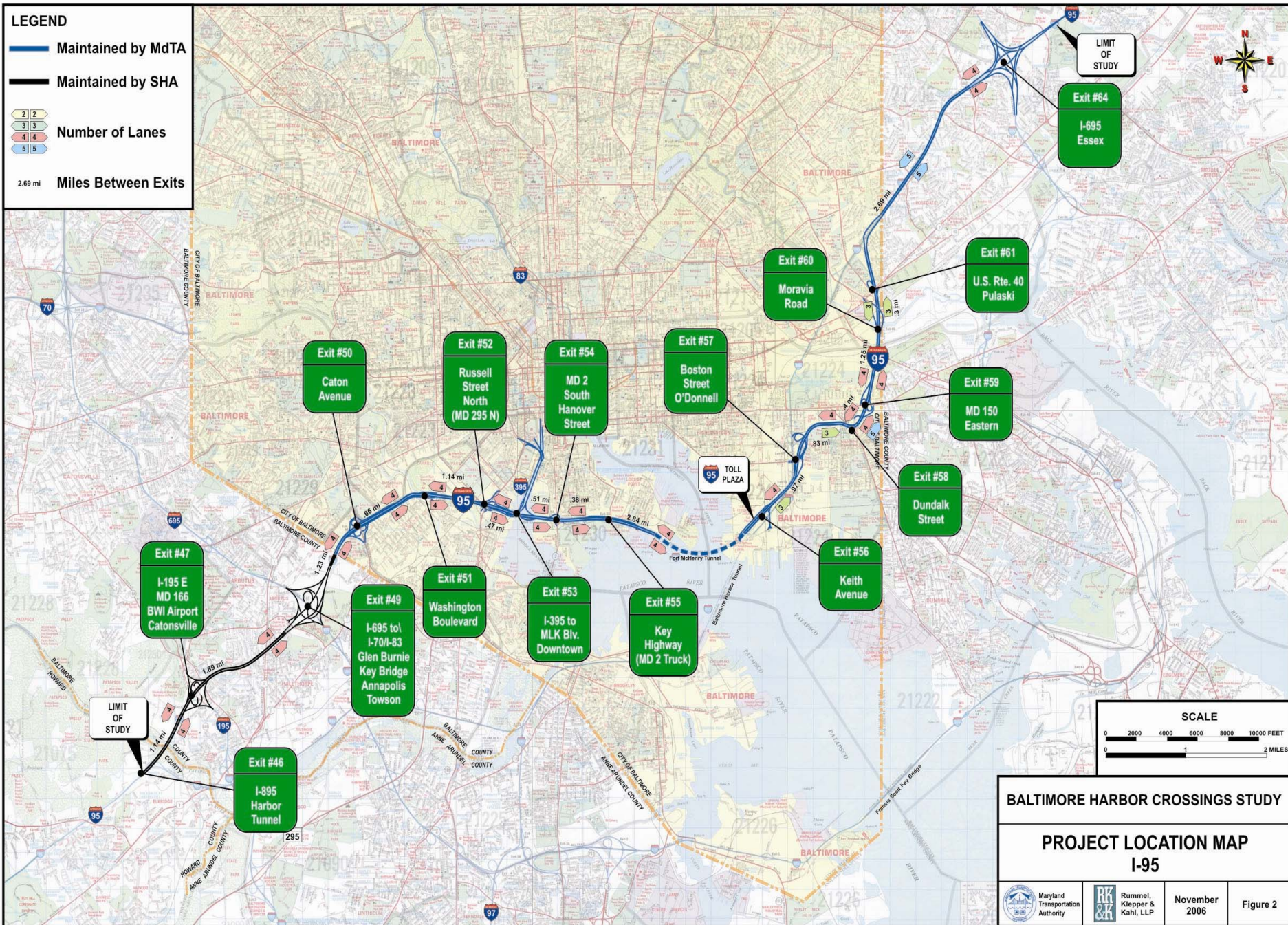
Background

The three MdTA facilities being studied as part of this effort are:

- Fort McHenry Tunnel (FMT): I-95 from Caton Avenue to the I-95/I-895N split (10 miles)
- Baltimore Harbor Tunnel (BHT): I-895 (20 miles)
- Francis Scott Key Bridge (FSK): I-695 from MD 10 to MD 151 (11 miles)

LEGEND

- Maintained by MdTA
 - Maintained by SHA
- Number of Lanes**
- 2 2
 - 3 3
 - 4 4
 - 5 5
- 2.69 mi Miles Between Exits



BALTIMORE HARBOR CROSSINGS STUDY

PROJECT LOCATION MAP
I-95

		Rummel, Klepper & Kahl, LLP	November 2006	Figure 2
--	--	-----------------------------	---------------	----------

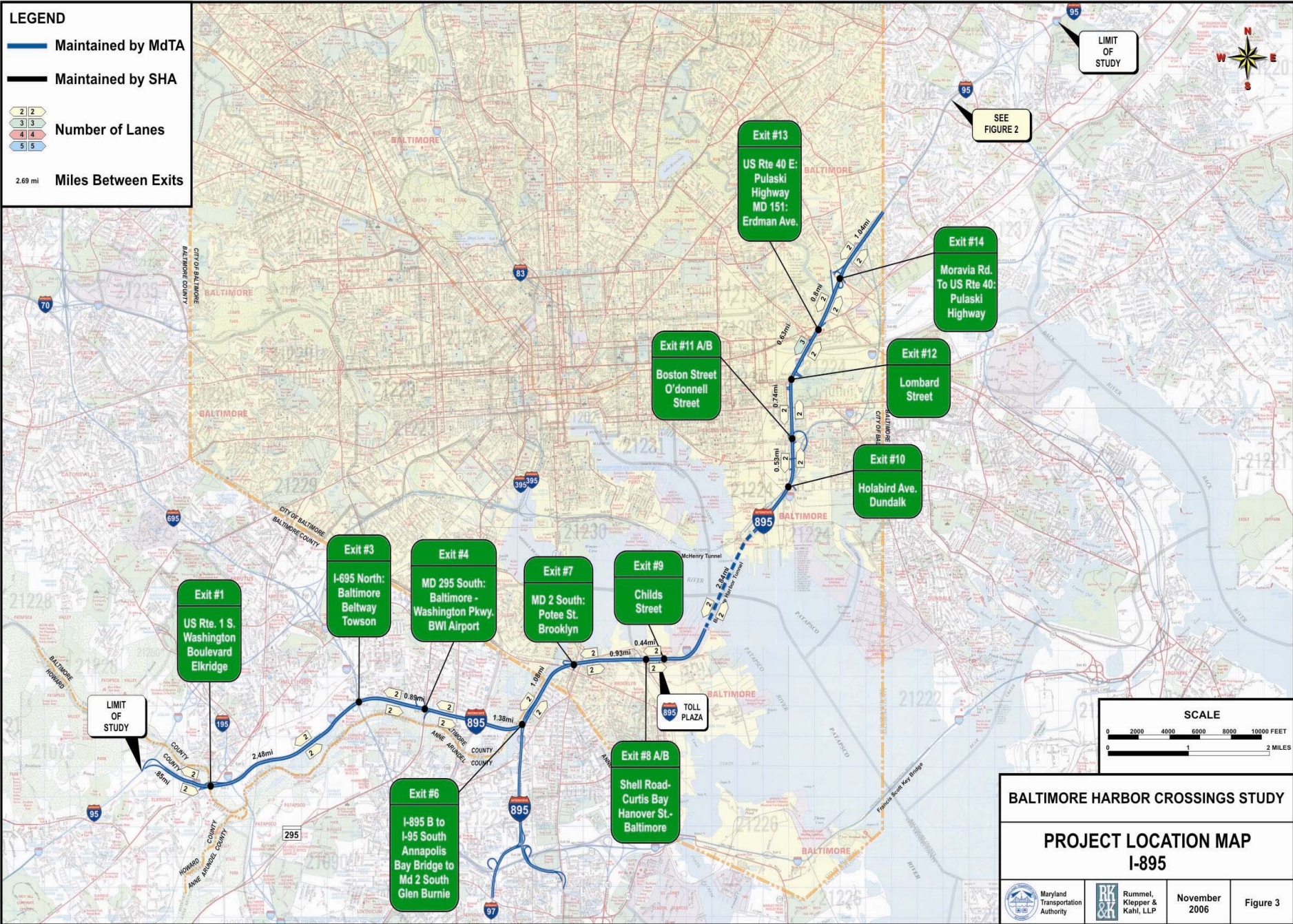
LEGEND

- Maintained by MdTA
- Maintained by SHA

Number of Lanes

- 2 2
- 3 3
- 4 4
- 5 5

2.69 mi **Miles Between Exits**



BALTIMORE HARBOR CROSSINGS STUDY

PROJECT LOCATION MAP
I-895

		Rummel, Klepper & Kahl, LLP	November 2006	Figure 3
--	--	-----------------------------	---------------	----------

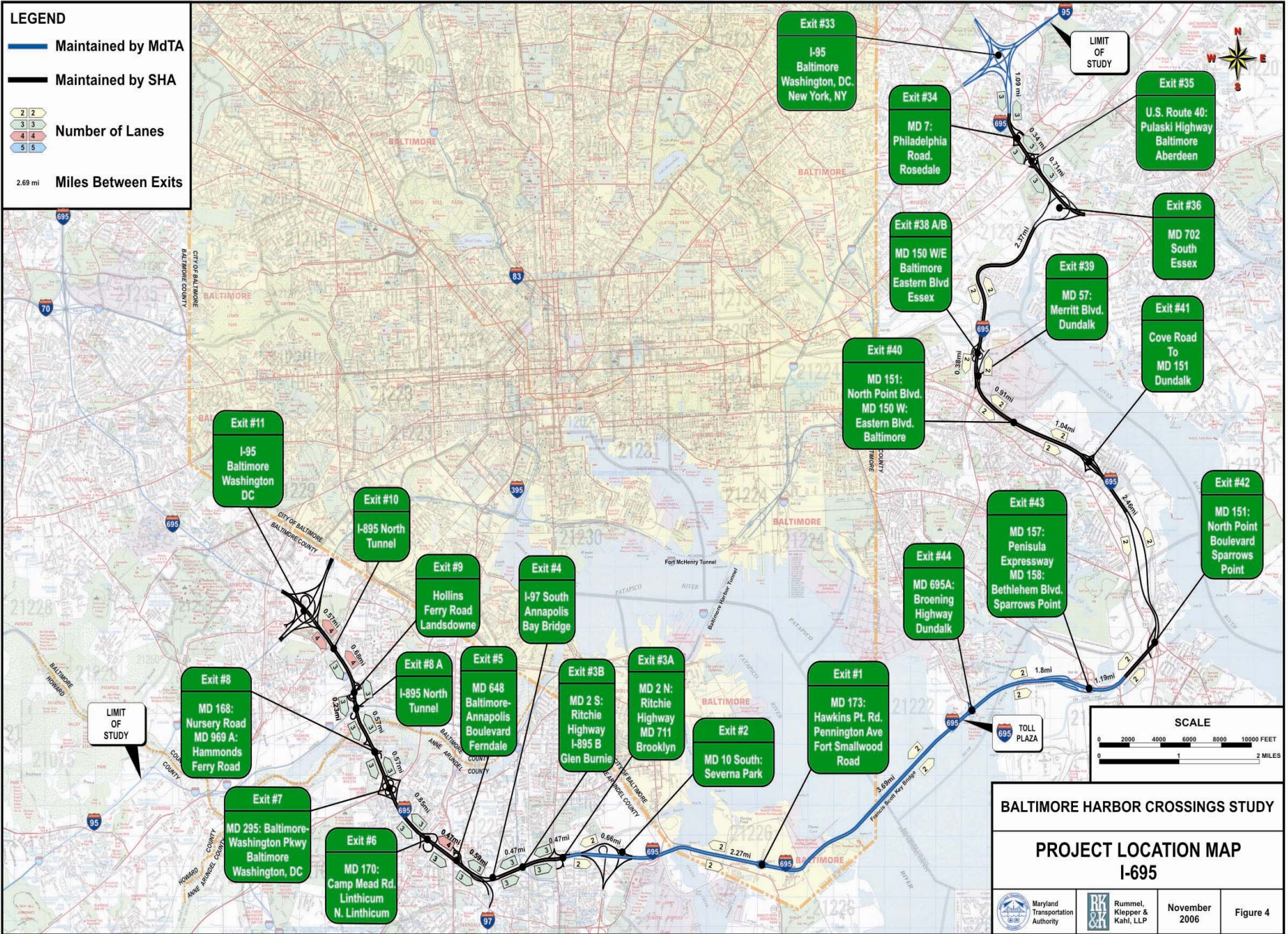
LEGEND

- Maintained by MdTA
- Maintained by SHA

Number of Lanes

- 2
- 3
- 4
- 5

2.69 mi Miles Between Exits



BALTIMORE HARBOR CROSSINGS STUDY

PROJECT LOCATION MAP I-695

		November 2006	Figure 4
--	--	---------------	----------



Percent Use

The Percentage of highway capacity used during peak hour:

- FMT: 102%
- BHT: 90%
- FSK: 66%
- Average Total (FMT, BHT & FSK): 88%



Purpose of the Study

The purpose of this study is to assess a range of options for better distribution of traffic across the three Harbor crossings.



Options Being Considered

Traffic Control:

- Expand supplemental static guide signs
- Expand Dynamic Message Signing



Options Being Considered – Cont.

Physical Improvements & Additional Access:

- Additional ramp movements at existing interchanges along I-95 and I-895, north of the tunnels
- Mainline widening at specific locations
- Reconfigure the southern I-95/I-895 split to be a major interstate diverge



Options Being Considered – Cont.

Toll-Related Modifications:

- Open Road Tolling (ORT)
- Variable Pricing



Coordination

The Maryland Transportation Authority would like to complete this study in consultation with:

- Local governments (City of Baltimore, and Anne Arundel and Baltimore counties)
- Maryland Department of Transportation, State Highway Administration and Maryland Transit Administration



Study Milestones

- Project Initiation – Spring 2007
- Draft Study Report – Spring 2008
- Final Study Report – Summer 2008