

Achieving Smarter Growth in the Baltimore Region

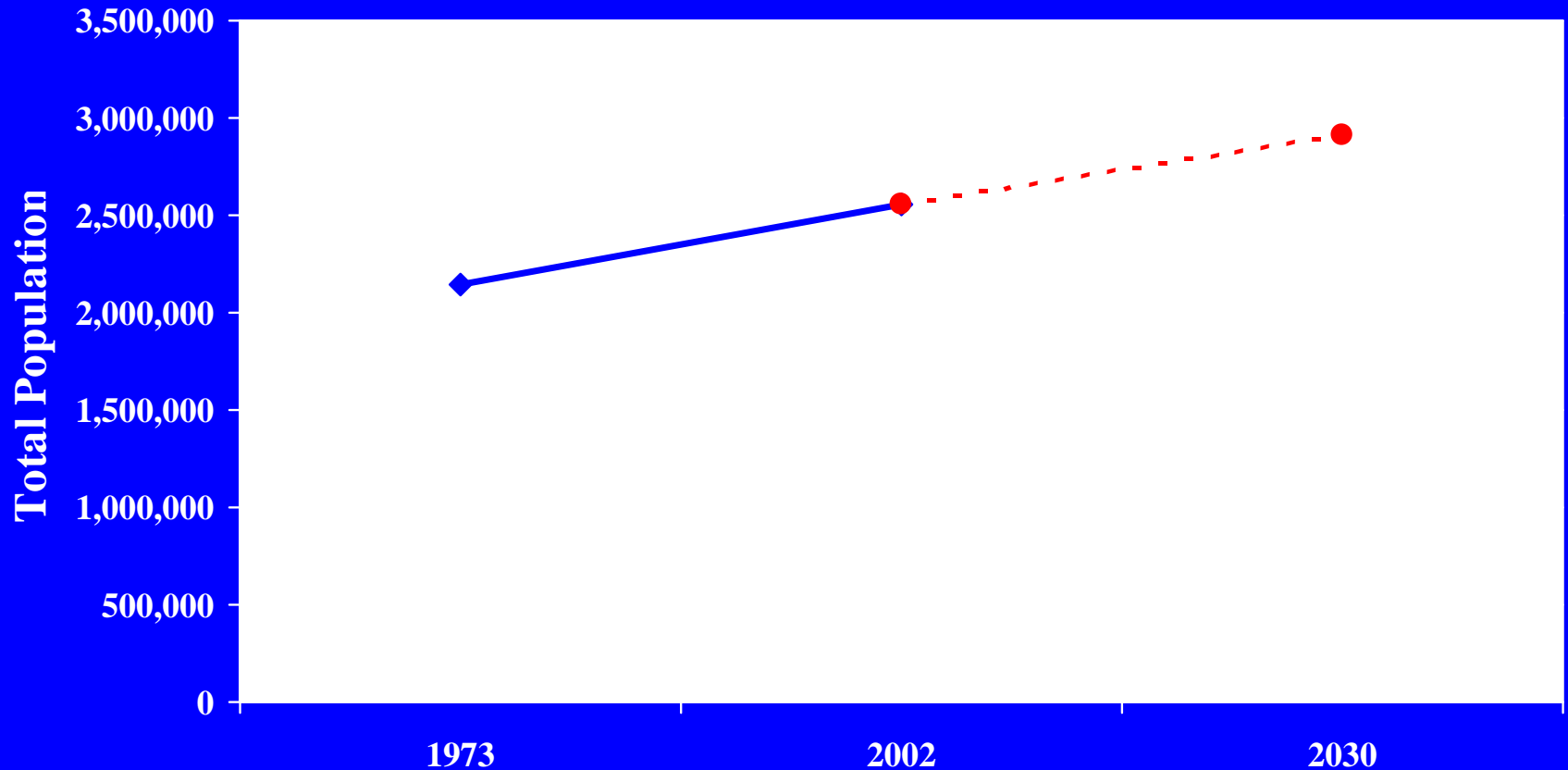


Richard E. Hall
Secretary
Maryland Department of Planning
August 28, 2007

Today's Agenda

- Provide an overview of growth trends and implications.
- Smart Growth and the BRTB
- Potential Goals for Achieving Smart Growth

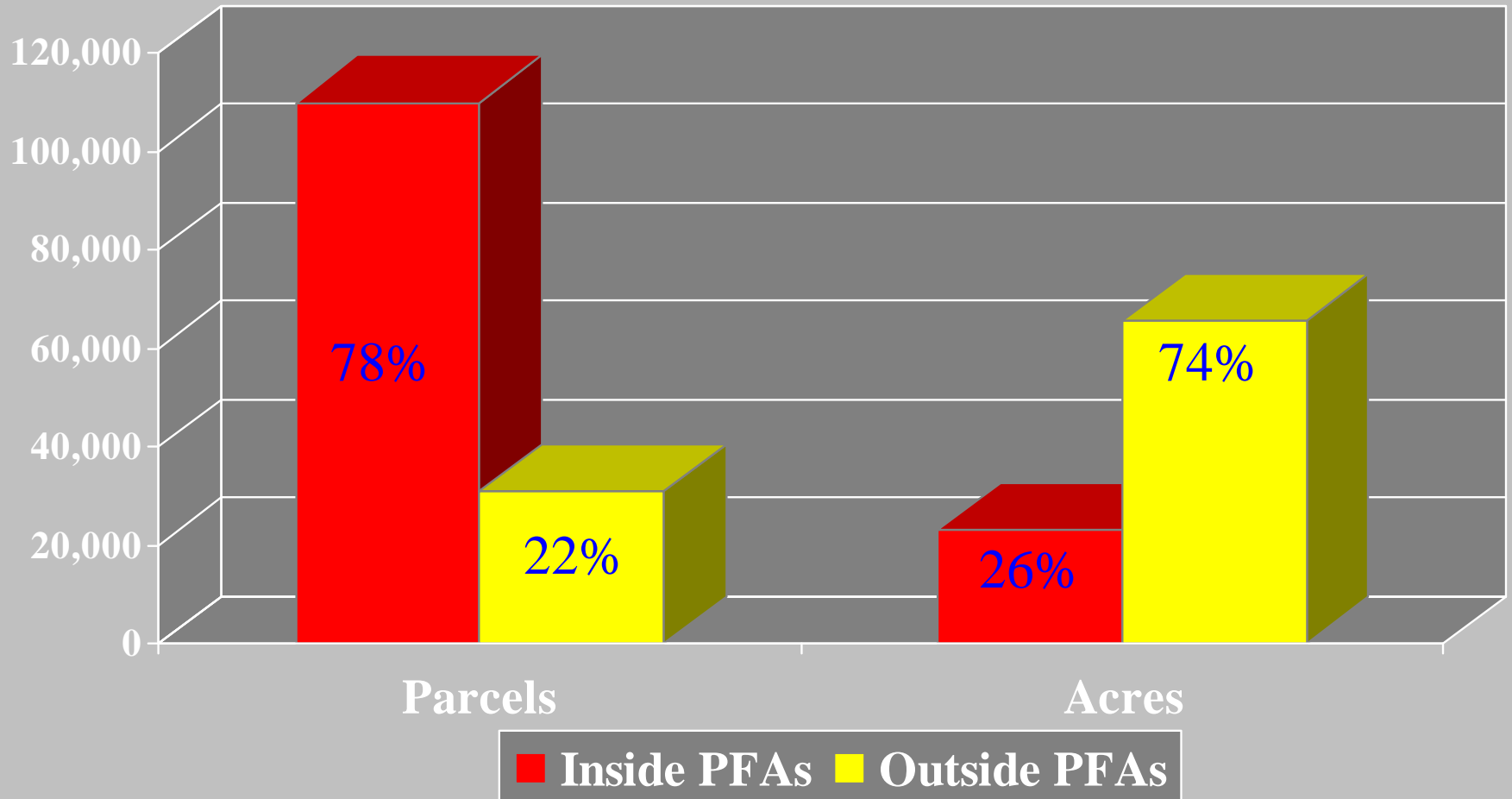
Population Growth Between 1973 - 2030 for the Baltimore Region



Source: 1973 & 2002 population figures are from the U.S. Census Bureau's Population Estimates Division.

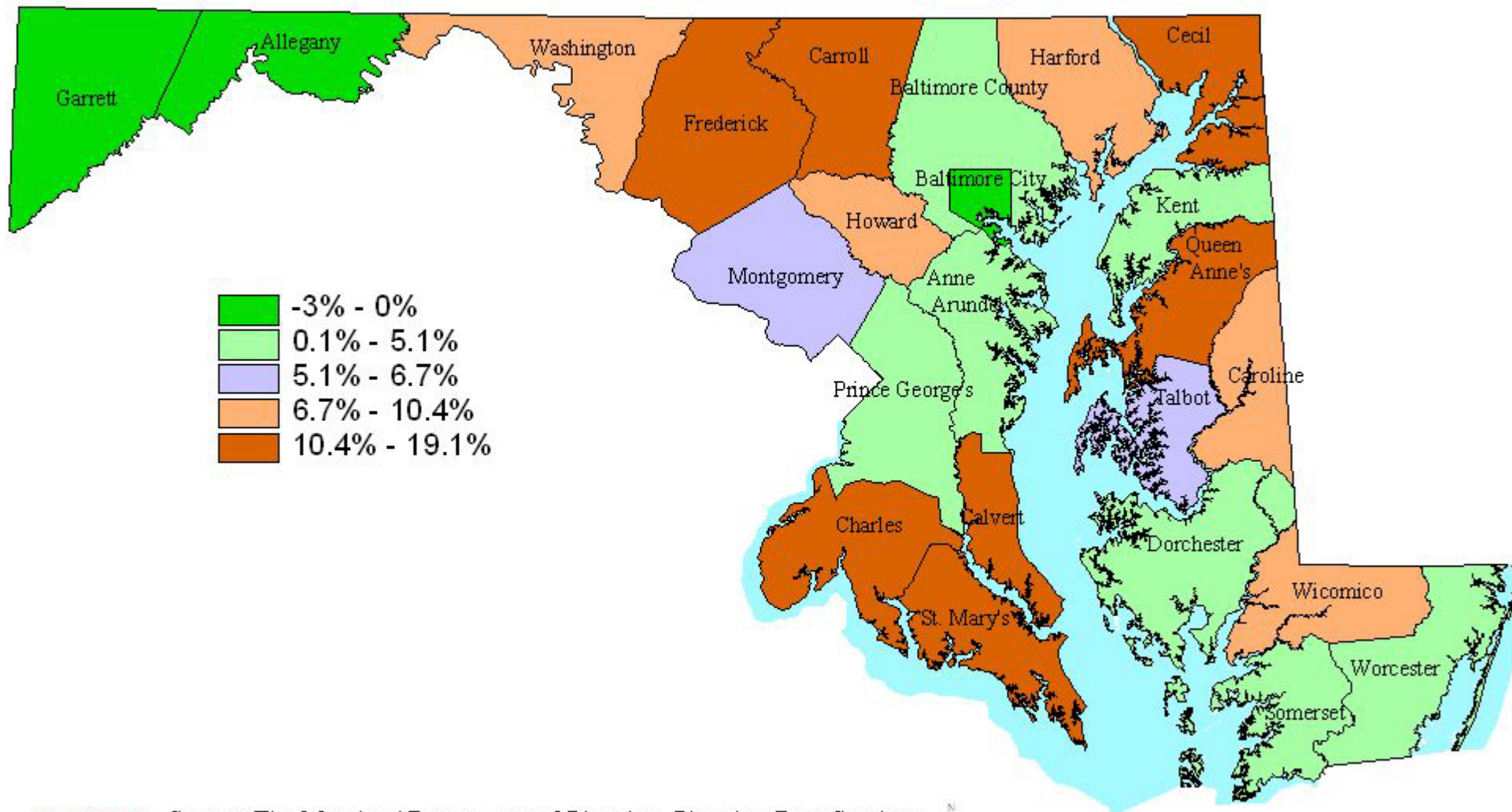
2030 figure is from the Maryland Department of Planning projections.

Number of Parcels and Acres Developed Inside and Outside of PFAs in Baltimore Region, 1990 – 2004



Prepared by the Maryland Department of Planning, Planning Data Services, August 2006. Source of data is MdProperty View. Data is for improved residential single-family parcels of \$1,000 or more on parcels of 20 acres or less.

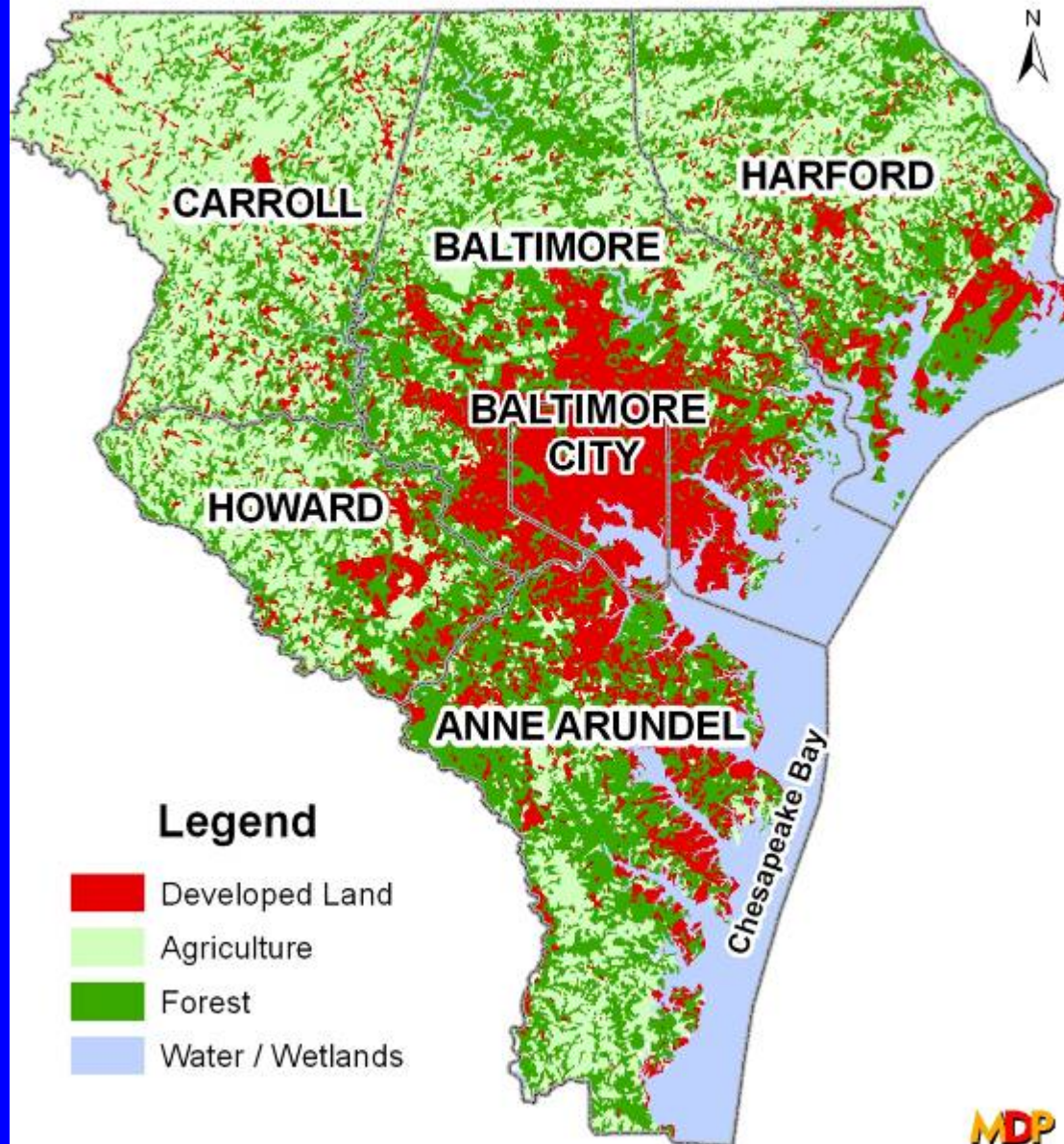
Percent Change in Population for Maryland's Jurisdictions, 2000-2006



Source: The Maryland Department of Planning, Planning Data Services from the Population Division, U.S. Census Bureau

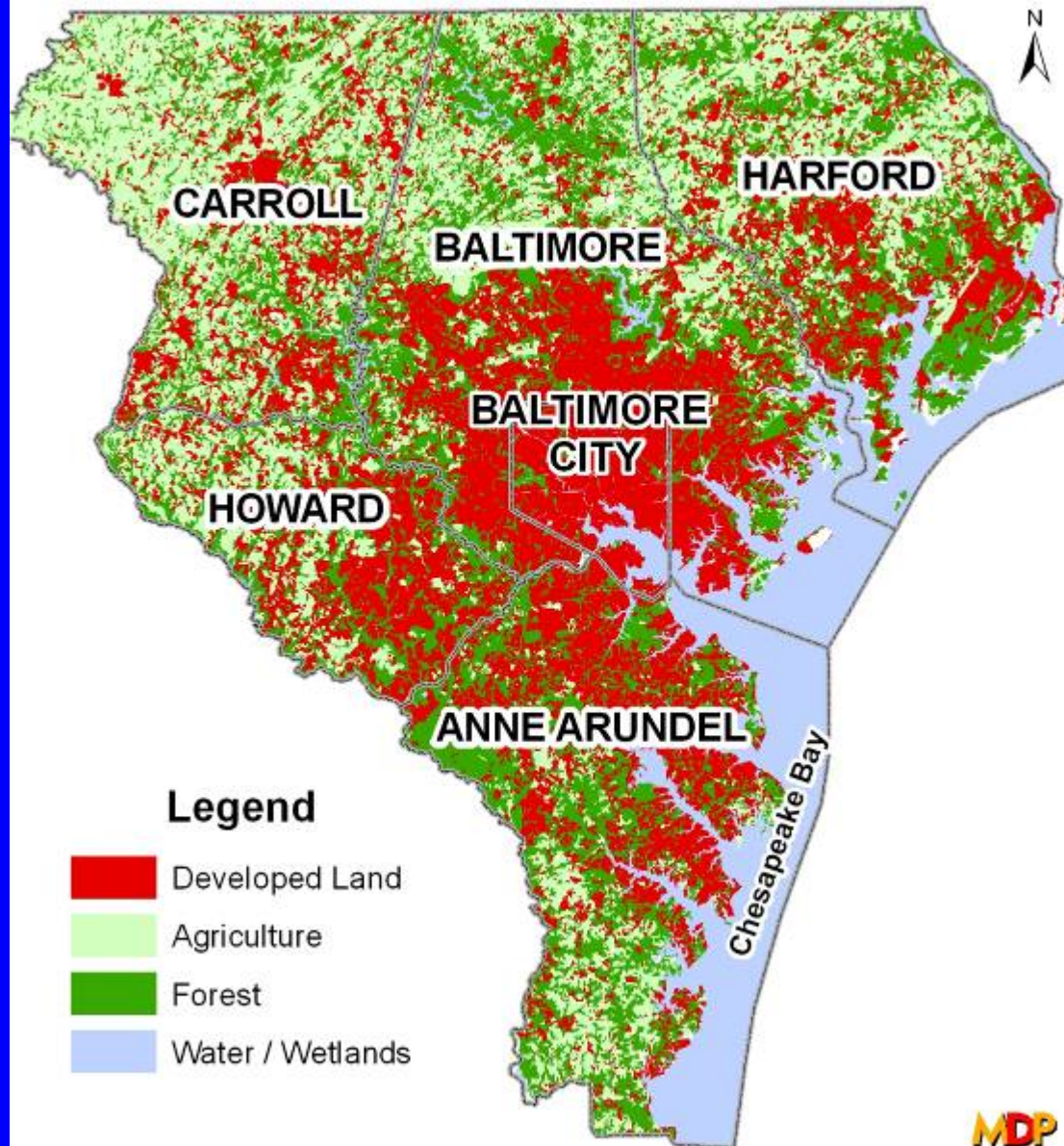


1973 Land Use / Land Cover Baltimore Region

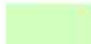


0 2.5 5 10 15 20 Miles

2002 Land Use / Land Cover Baltimore Region



Legend

-  Developed Land
-  Agriculture
-  Forest
-  Water / Wetlands

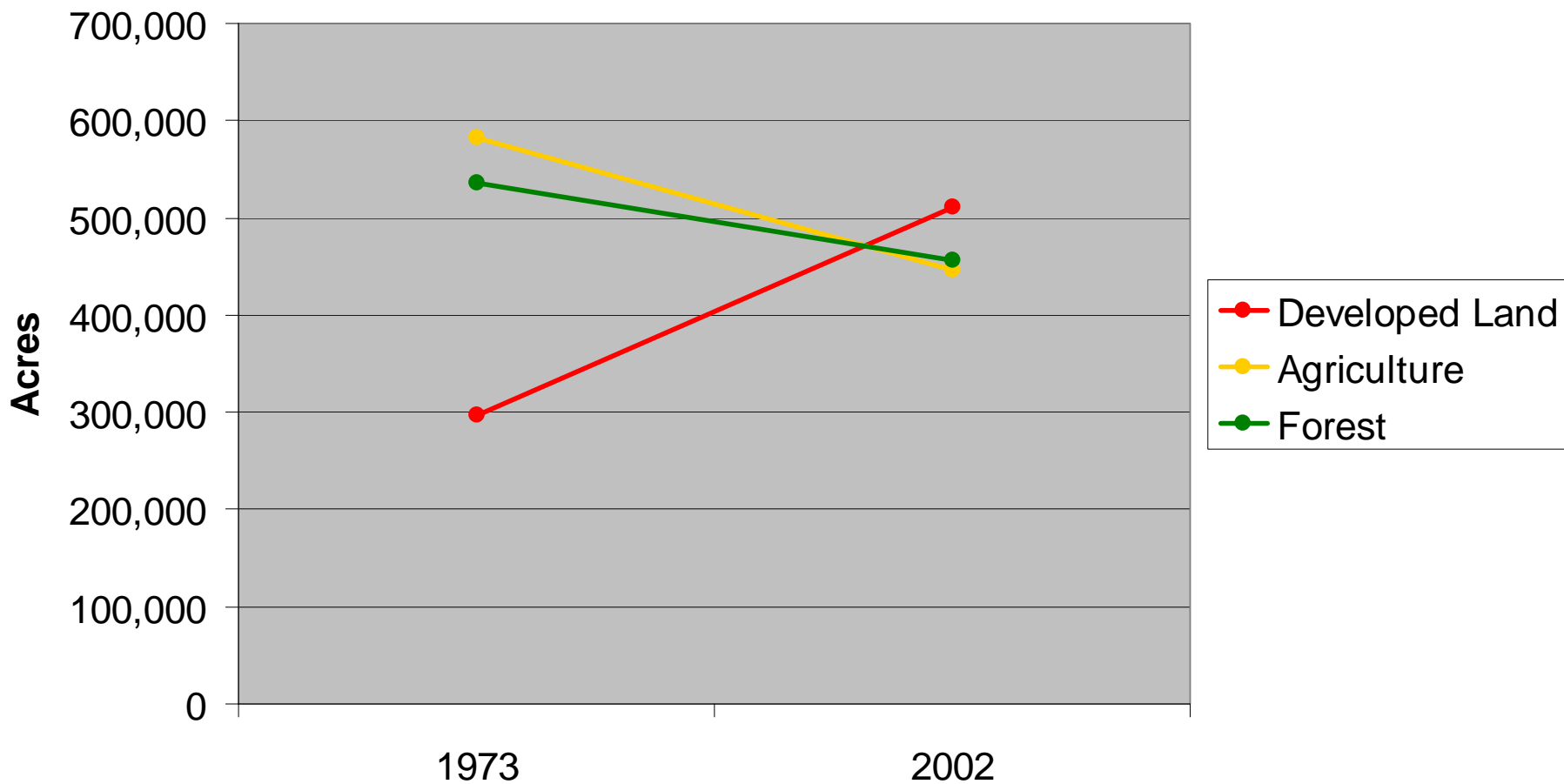
0 2.5 5 10 15 20 Miles

MDP

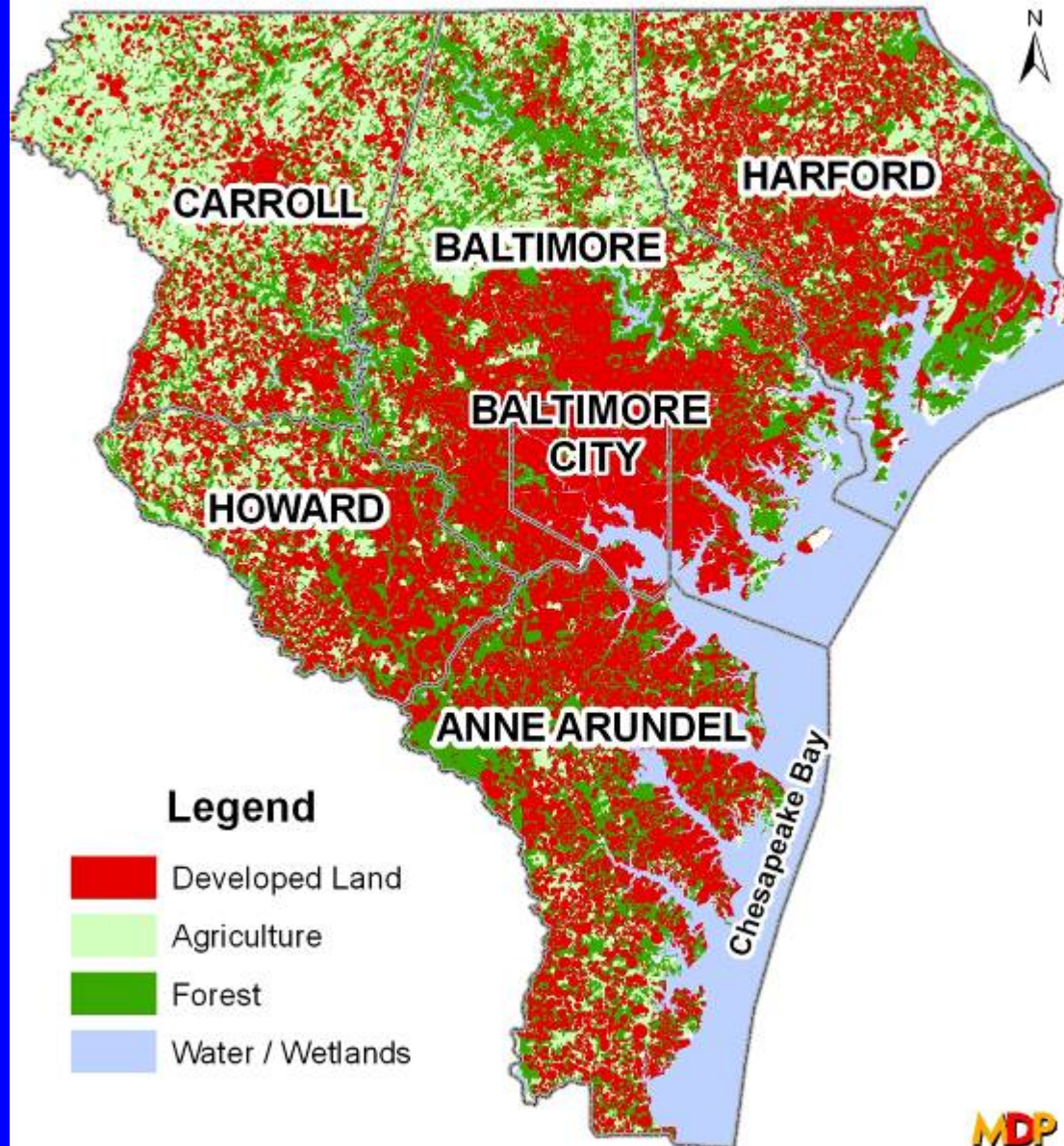
Maryland Department of Planning
August 2007

Growth and Development Trends in the Baltimore Region

1973/2002 LandUse Analysis



2030 Potential Land Use / Land Cover Baltimore Region

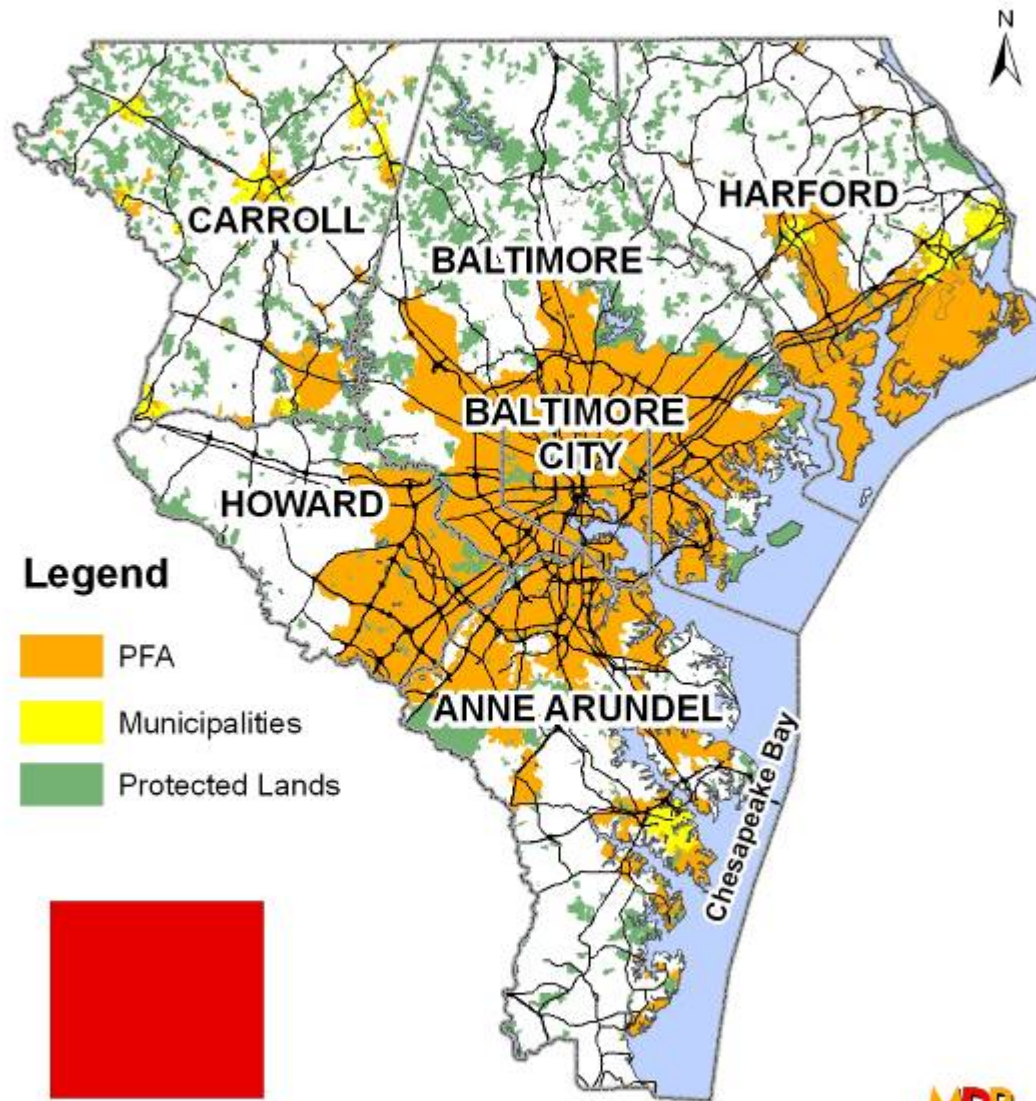


Legend

- Developed Land
- Agriculture
- Forest
- Water / Wetlands

0 2.5 5 10 15 20 Miles

Priority Funding Areas/Protected Lands & New Potential Developed Acres by 2030



116,209 Potential Acres
of Development

MDP

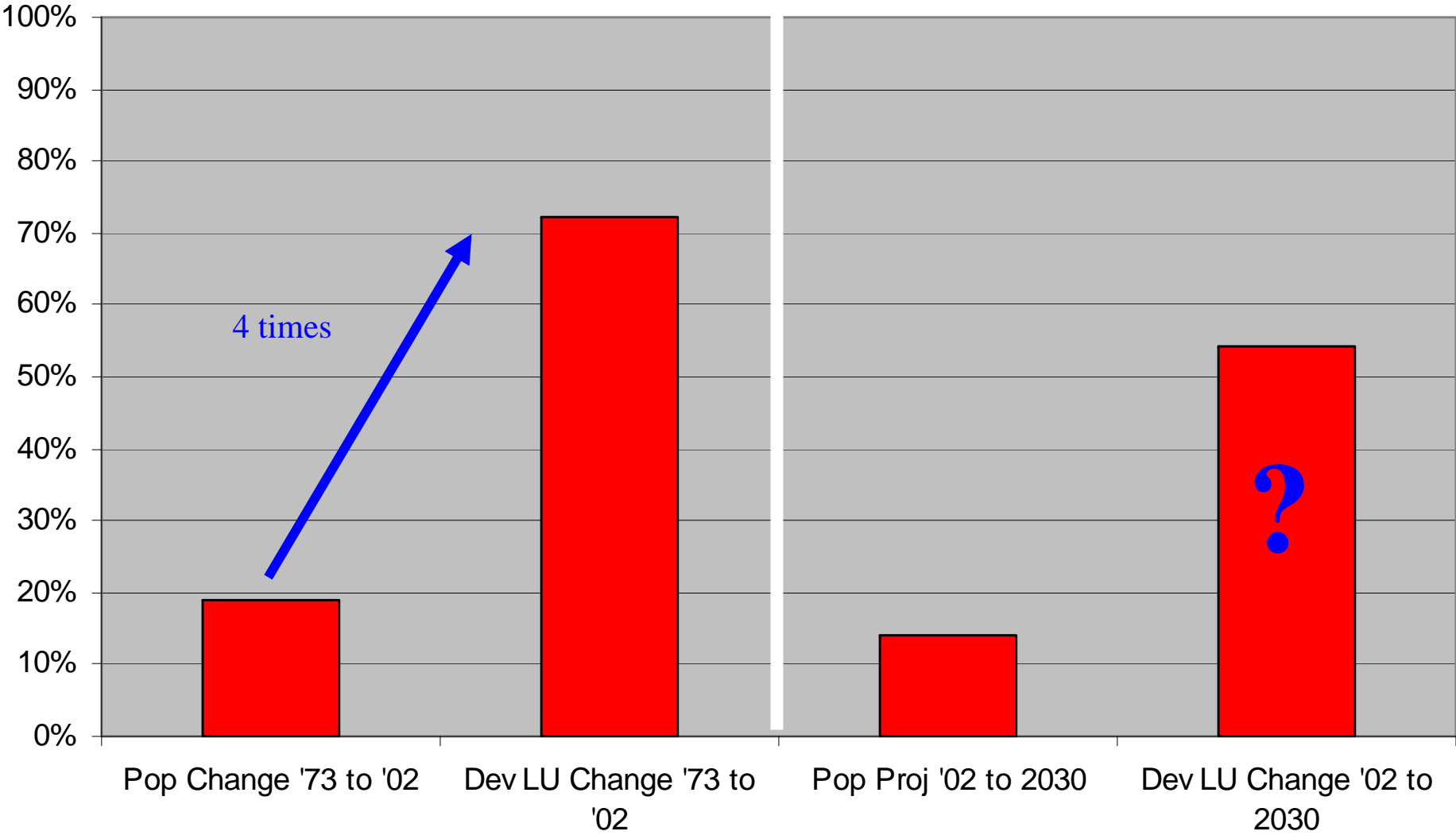
Maryland Department of Planning
August 2007

0 2.5 5 10 15 20
Miles

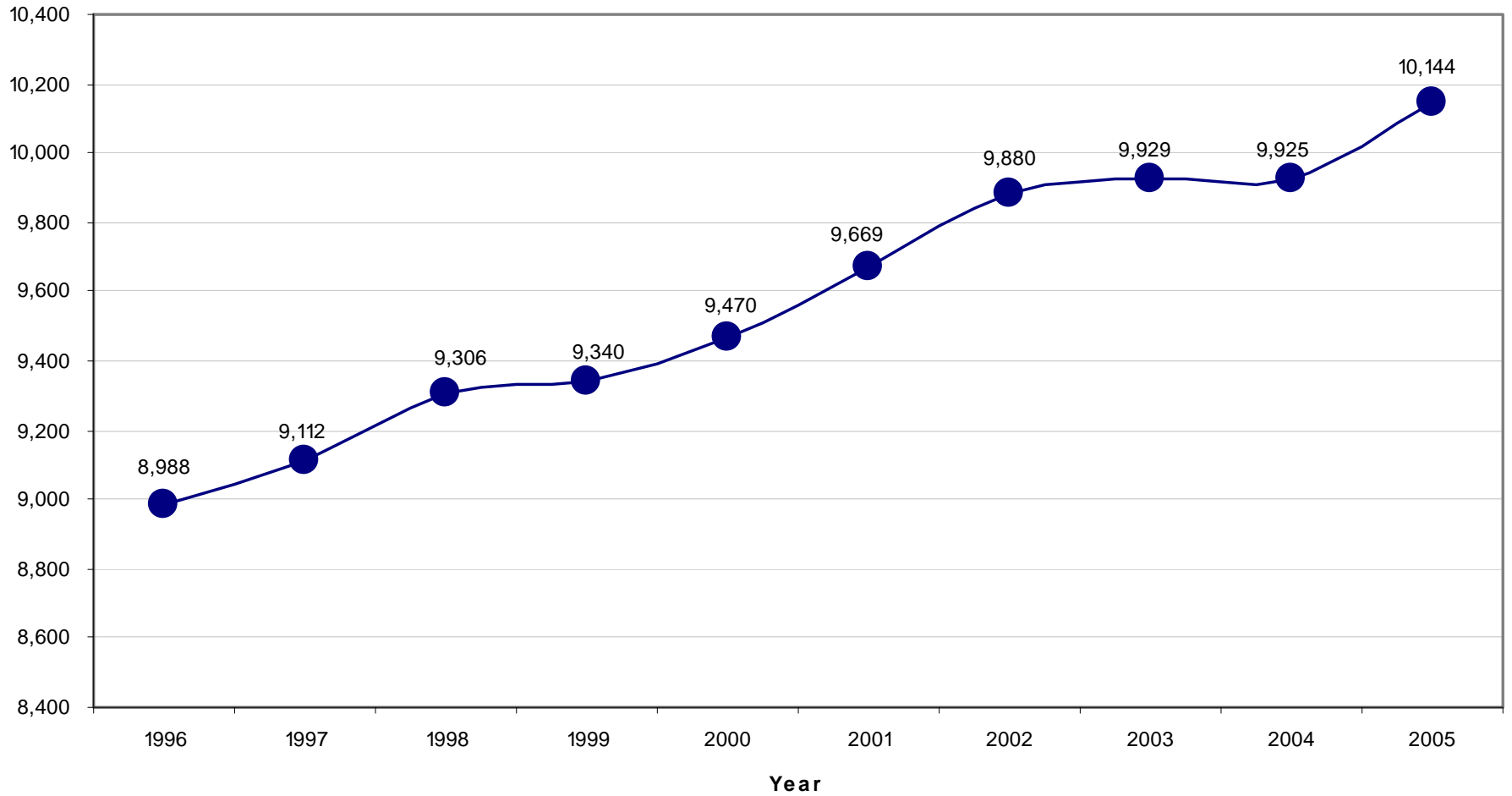
Percent Change in Population & Developed Land For the Baltimore Region

History

Future?



Annual Vehicle Miles of Travel in Maryland



Smart Growth and the BRTB

- MDP's Role on BRTB
- BRTB's Role
- Transportation Outlook 2035 and Smart Growth



Potential Goals to Achieve Smart Growth

1. Use State transportation investment to work hand-in-hand with smart growth goals by helping to direct growth into Priority Funding Areas (PFAs), build walkable communities, increase transit usage, inter-modal connection, walking and biking, and reduce single occupancy vehicle travel

Potential Goals to Achieve Smart Growth

2. Develop and implement transit supportive land use plans, regulations, and design guidelines in the Baltimore Region to achieve smarter growth while supporting the State's transit investment

Potential Goals to Achieve Smart Growth

3. Develop land use and transportation strategies that will discourage growth outside of PFAs to meet smart growth challenge while helping the State to focus transportation investment in PFAs

Potential Goals to Achieve Smart Growth

4. Develop transportation and smart growth scenarios by using transportation and land use modeling to enhance the region's land use and transportation planning processes



Thank You