



Profile of Travel Trends

***A Statistical Abstract for 1980, 1990, 2000,
2005 and 2006***

***Presentation to the BRTB
July 22, 2008***



Trends Overview

- Ninth in a series of trends reports – last report in April 2004
- On-going effort to monitor trends in the region for the past 26 years
- Includes 1980, 1990, 2000, 2005 and 2006



Population

	Census 1980	Change	Census 1990	Change	Census 2000	Change	Estimated 2005	1980-2005 Change
Baltimore City	786,741	-6.4%	736,014	-11.5%	651,154	-0.3%	640,064	-18.6%
Anne Arundel County	370,775	15.2%	427,239	14.6%	489,656	0.8%	510,088	37.6%
Baltimore County	655,615	5.6%	692,134	9.0%	754,292	0.8%	782,885	19.4%
Carroll County	96,356	28.0%	123,372	22.3%	150,897	2.1%	166,961	73.3%
Harford County	145,930	24.8%	182,132	20.0%	218,590	1.7%	237,317	62.6%
Howard County	118,572	58.0%	187,328	32.3%	247,842	1.6%	267,779	125.8%
Baltimore Region Total	2,173,989	8.0%	2,348,219	7.0%	2,512,431	0.7%	2,605,094	19.8%
State of Maryland Total	4,216,933	13.4%	4,780,753	10.8%	5,296,486	1.0%	5,573,163	32.2%
Region as % of State	51.6%		49.1%		47.4%		46.7%	

SOURCE: US Census Bureau Estimates

Quick Facts

- Regional Population increased approximately 20 %
- Statewide increase in population – 32%
- Baltimore City – lost 19% since 1980
- Howard County – 126% increase
- Carroll County – 73% increase



Employment

	1980-2005							
	1980	Change	1990	Change	2000	Change	2005	Change
Baltimore City	504,000	2.0%	514,000	-10.4%	460,600	-4.2%	441,100	-12.5%
Anne Arundel County	176,000	42.6%	251,000	18.3%	297,000	7.2%	318,400	80.9%
Baltimore County	309,000	29.4%	400,000	13.0%	452,100	8.3%	489,700	58.5%
Carroll County	36,000	47.2%	53,000	28.9%	68,300	11.7%	76,300	111.9%
Harford County	51,000	49.0%	76,000	26.3%	96,000	17.1%	112,400	120.4%
Howard County	57,000	87.7%	107,000	49.5%	160,000	10.5%	176,800	210.2%
Baltimore Region Total	1,133,000	23.7%	1,401,000	9.5%	1,534,000	5.3%	1,614,700	42.5%
State of Maryland Total	2,074,533	33.0%	2,759,870	12.0%	3,091,547	8.1%	3,341,300	61.1%
Region as % of State	54.6%		50.8%		49.6%		48.3%	

SOURCE: Baltimore Metropolitan Council Cooperative Forecasts

Quick Facts

- Regional employment grew 43 %
- Largest % gains in Howard County (210%) and Harford County (120.4%)
- Baltimore City lost 12.5 % since 1980



Licensed Drivers

	1980-2005							
	1980	Change	1990	Change	2000	Change	2005	Change
Baltimore City	372,000	6.5%	396,000	-23.7%	302,000	1.3%	306,033	-17.7%
Anne Arundel County	254,000	24.4%	316,000	11.1%	351,000	7.5%	377,298	48.5%
Baltimore County	458,000	15.9%	531,000	0.8%	535,000	6.6%	570,072	24.5%
Carroll County	67,000	40.3%	94,000	16.0%	109,000	15.1%	125,451	87.2%
Harford County	100,000	37.0%	137,000	15.3%	158,000	13.5%	179,266	79.3%
Howard County	87,000	69.0%	147,000	23.8%	182,000	11.8%	203,505	133.9%
Baltimore Region Total	1,338,000	21.2%	1,621,000	1.0%	1,637,000	7.6%	1,761,625	31.7%
State of Maryland Total	2,710,000	23.0%	3,333,000	6.7%	3,557,096	4.3%	3,709,594	36.9%
Region as % of State	49.4%		48.6%		46.0%		47.5%	

SOURCE: Maryland Motor Vehicle Administration

Quick Facts

- 21 % increase between 1980 and 1990
- Howard County – largest increase (134%)
- decline in Baltimore City by 24% in 90's but recovered in 00 to 05 with 1.3%



Traffic Crashes

	1980-2005							
	1980	Change	1990	Change	2000	Change	2005	Change
Baltimore City	38,000	-39.5%	23,000	-8.7%	21,000	-11.3%	18,636	-51.0%
Anne Arundel County	9,000	0.0%	9,000	0.0%	9,000	5.0%	9,449	5.0%
Baltimore County	14,000	7.1%	15,000	-13.3%	13,000	19.6%	15,543	11.0%
Carroll County	1,000	100.0%	2,000	0.0%	2,000	10.2%	2,203	120.3%
Harford County	3,000	0.0%	3,000	0.0%	3,000	14.8%	3,443	14.8%
Howard County	2,000	100.0%	4,000	0.0%	4,000	-23.8%	3,048	52.4%
Baltimore Region Total	67,000	-16.4%	56,000	-7.1%	52,000	0.6%	52,322	-21.9%
State of Maryland Total	121,000	-11.6%	107,000	-7.5%	99,000	3.6%	102,546	-15.3%
Region as % of State	55.4%		52.3%		52.5%		51.0%	

SOURCE: Maryland State Police

Quick Facts

- Howard County Accidents reduced by 24% between 00-05
- Baltimore City – accidents reduced by 51%



Daily Vehicle Miles of Travel (VMT)

	1980-2005							
	1980	Change	1990	Change	2000	Change	2005	Change
Baltimore City	7,040,984	55.8%	8,671,233	23.0%	9,748,634	2.1%	9,961,644	41.5%
Anne Arundel County	5,437,564	2.1%	8,471,717	1.1%	10,420,029	0.4%	11,504,433	111.6%
Baltimore County	8,394,589	5.1%	11,911,333	1.1%	13,225,084	2.1%	14,620,750	74.2%
Carroll County	1,235,173	3.8%	1,936,392	2.0%	2,356,705	2.9%	2,703,525	118.9%
Harford County	1,787,329	5.2%	2,641,426	1.8%	3,116,759	1.3%	3,312,542	85.3%
Howard County	2,630,648	73.6%	4,566,749	5.3%	7,208,961	2.6%	8,159,470	210.2%
Baltimore Region Total	19,485,302	4.7%	29,527,617	2.1%	36,327,538	2.2%	40,300,720	106.8%
State of Maryland Total	54,621,526	4.6%	82,111,865	2.1%	100,939,119	2.1%	111,774,970	104.6%
Region as % of State	35.7%		36.0%		36.0%		36.1%	

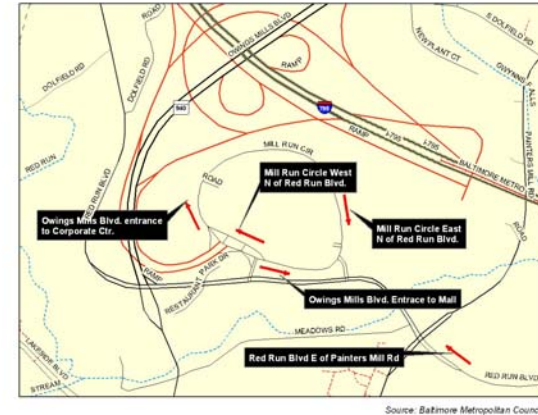
SOURCE: Maryland State Highway Administration

Quick Facts

- Regional VMT increased by 107 % between 80-05
- Regional population increased by 20%
- Regional road capacity increased by 18 %



Owings Mills Activity Center (and 11 more)



Source: Baltimore Metropolitan Council

Morning Peak

6:00 to 9:00 AM 1996 and 1998

7:00 to 9:00 AM 2000,2003,2005

1996-2005

	1996	Change	1998	Change	2000	Change	2003	Change	2005	Change
Driver-Only-Occupant Vehicles	4,857	-17.0%	3,203	-0.04%	3,198	-13.2%	1,927	2.8%	2,034	-58.1%
Two-Occupant Vehicles	328	-18.9%	204	4.4%	240	-21.3%	87	13.2%	110	-66.5%
Three-Occupant Vehicles	23	-4.3%	21	-13.1%	10	-23.3%	3	66.7%	7	-69.6%
Four-Plus-Occupant Vehicles	4	-12.5%	3	8.3%	4	-16.7%	2	0.0%	2	-50.0%
Total Number of Occupants	5,598	-17.1%	3,686	0.3%	3,724	-14.4%	2,118	3.9%	2,283	-59.2%
Total Number of Private Vehicles	5,212	-17.1%	3,431	0.2%	3,452	-13.8%	2,019	3.3%	2,153	-58.7%
Total Number of Carpoolers	741	-17.4%	483	2.2%	526	-21.2%	191	15.2%	249	-66.4%
Per Cent Carpoolers	13%		13%		14%		9%		11%	
Occupancy Rate	1.07		1.07		1.08		1.05		1.06	

NOTE: Commercial Vehicles, Trucks and Buses are not included in these counts



Bus & Rail Ridership

	1980	1990	1980-1990 % Change	1995	2000	1990-2006 % Change	2006
Student Riders	20,000,000	7,000,000	-65.0%	7,000,000	6,090,000	-29%	4,980,000
Adult Riders	80,200,000	7,400,000	-9.8%	84,000,000	88,460,000	6%	78,200,000
Total Ridership	102,000,000	81,000,000	-20.6%	91,000,000	94,550,000	3%	83,180,000

Source: Maryland Transit Administration

Quick Fact

- Total Ridership has returned to 1990 numbers after rise in 2000



BWI Passenger Traffic

YEAR	Passengers (Millions)	% Change
1980	3.8	-----
1990	10.2	168%
1995	13.2	29%
2000	19.6	48%
2006	20.7	5%

Source: Maryland Aviation Administration (MAA)



BWI Freight Traffic

Calendar Year	Tons of Cargo	% Change
1980	50,000	-----
1990	130,000	160.0%
1995	116,212	-10.6%
2000	260,237	123.9%
2006	123,954	-52%

Source: Maryland Aviation Administration (MAA)



Regional Air Passenger Traffic

YEAR	Passengers (Millions)		
	BWI	Dulles	National/Reagan
1980	3.8	2.6	18.6
1990	10.2	10.4	15.8
2000	19.6	20.1	15.9
2006	20.7	23	12.9

Source: Maryland Aviation Administration (MAA)



Future Activities

- Report to be Finished in July/August
- It will include several more travel characteristics including
 - Gas Prices
 - Traffic Counts
 - Roadway Levels of Service



Questions/Comments

