

## HOWARD COUNTY

### **Federally Funded Local Projects:**

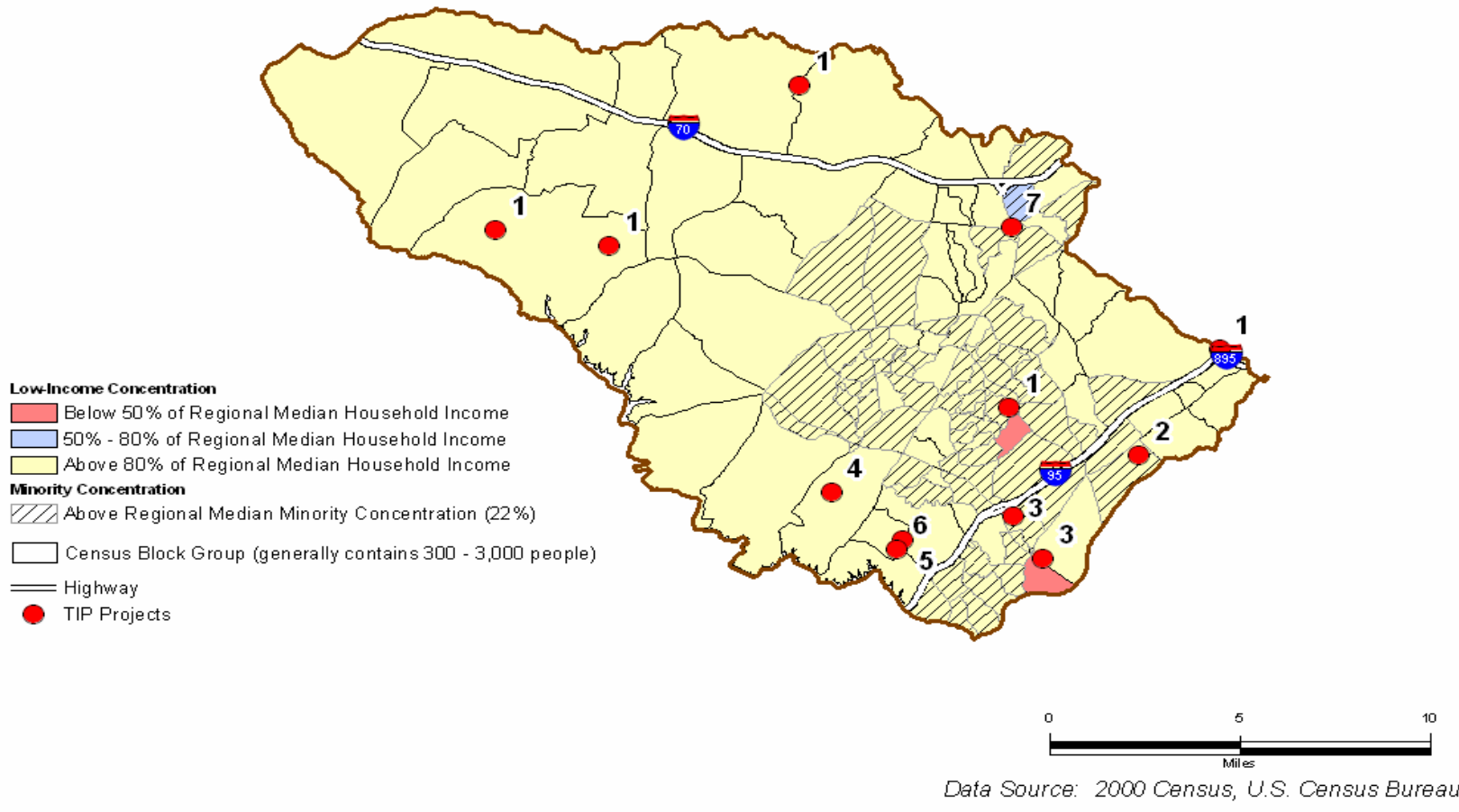
1. Bridge Repairs/ Deck Replacement

### **Regionally Significant and Non – Federally Funded Projects:**

2. Dorsey Run Road: MD 175 south to the CSX railroad spur crossing
3. Guilford Road: US 1 to Dorsey Run Road
4. Johns Hopkins Road: US 29 to Sanner Road
5. Loop Road: MD 216/ Leishear Road to All Saints
6. Loop Road: New interchange at MD 216
7. US 29: MD 99- MD 100

### Exhibit VI-6

## TIP Projects in Howard County with Low-Income & Minority Concentrations



2005 - 2009 Transportation Improvement Program

Howard County

Enhancement Program

*US 40 Corridor Improvements*

<b>TIP Id #</b>	16-0539-25	<b>Year of Operation</b>	2009
<b>Agency</b>	Local Project	<b>Project Type</b>	Bicycle/pedestrian facility
<b>Project Category</b>	Enhancement Program	<b>Functional Class</b>	Minor arterial
<b>Conformity Status</b>	Programmatically Conforming	<b>Physical Data</b>	NA
<b>CIP/CTP Page#</b>	NA		

Description	Justification
A project to plan, design and implement a series of streetscape, pedestrian, bicycle and public green space improvements on public property.	Enhancement of the US 40 corridor is a priority under the General Plan 2000. The purpose is to invest public funds in community enhancement projects that will spur revitalization by the private sector, promote economic development, improve public safety and enhance the quality of life along the corridor. The Route 40 Enhancement Study will be completed by mid 2004 and will identify specific enhancements strategies and projects. Pedestrian and bicycle improvements will be coordinated with and promote access to State and Howard County public transportation services including MTA and Howard Transit bus services.

**Enhancement Funds under STP**

Phase	Previous Requests		Annual Element		Federal Funding Requests						Project Totals
	Previous Federal Funds	Previous Matching Funds	FY 2005 Federal Funds	FY 2005 Matching Funds	FY 2006 Federal Funds	FY 2006 Matching Funds	FY 2007 Federal Funds	FY 2007 Matching Funds	FY 08-09 Federal Funds	FY 08-09 Matching Funds	Estimated Project Total
CON			\$50	\$200			\$125	\$125	\$125	\$125	\$750
OTH											\$0
PE				\$50		\$50				\$50	\$150
PP											\$0
ROW											\$0
<b>Totals</b>	<b>\$0</b>	<b>\$0</b>	<b>\$50</b>	<b>\$250</b>	<b>\$0</b>	<b>\$50</b>	<b>\$125</b>	<b>\$125</b>	<b>\$125</b>	<b>\$175</b>	<b>\$900</b>

2005 - 2009 Transportation Improvement Program

Howard County

Enhancement Program

*Pedestrian / Bicycle Improvements*

<b>TIP Id #</b>	16-9901-25	<b>Year of Operation</b>	2008
<b>Agency</b>	Local Project	<b>Project Type</b>	Bicycle/pedestrian facility
<b>Project Category</b>	Enhancement Program	<b>Functional Class</b>	NA
<b>Conformity Status</b>		<b>Physical Data</b>	NA
<b>CIP/CTP Page#</b>	NA		

<b>Description</b>	<b>Justification</b>
A project for the design and construction of pathway and bicycle links to the existing network to facilitate movement between residential areas and retail centers. Installation of complimentary crosswalks, pedestrian indications, pedestrian phases, signing, ADA ramps or advanced warning signals may be required.	Pathway improvement will provide continuous links to the MARC stations and interconnect counties. These were identified as high priorities in the Baltimore Regional Long Range Transportation Plan. The intersection improvement will provide added safety for pedestrian and bicycle by alerting motorists to the potential presence of pedestrians in the roadway. Locations may include, but are not limited to the following : Howard County spiral pathway in Savage to Savage MARC station, US 29 from Columbia to Montgomery County line, Frederick Road from Baltimore County line to US 40, various intersection involving pedestrian/ bike crossings.

**Enhancement Funds under STP**

<b>Phase</b>	<b>Previous Requests</b>		<b>Annual Element</b>		<b>Federal Funding Requests</b>						<b>Project Totals</b>
	<b>Previous Federal Funds</b>	<b>Previous Matching Funds</b>	<b>FY 2005 Federal Funds</b>	<b>FY 2005 Matching Funds</b>	<b>FY 2006 Federal Funds</b>	<b>FY 2006 Matching Funds</b>	<b>FY 2007 Federal Funds</b>	<b>FY 2007 Matching Funds</b>	<b>FY 08-09 Federal Funds</b>	<b>FY 08-09 Matching Funds</b>	<b>Estimated Project Total</b>
CON							\$250	\$135			\$385
OTH						\$5				\$5	\$10
PE					\$60	\$40				\$100	\$200
PP											\$0
ROW						\$15				\$10	\$25
<b>Totals</b>	<b>\$0</b>	<b>\$0</b>	<b>\$0</b>	<b>\$0</b>	<b>\$60</b>	<b>\$60</b>	<b>\$250</b>	<b>\$135</b>	<b>\$0</b>	<b>\$115</b>	<b>\$620</b>

2005 - 2009 Transportation Improvement Program

Howard County

Emission Reduction Strategy

*Pedestrian Overpass Program*

<b>TIP Id #</b>	16-0101-03	<b>Year of Operation</b>	2010
<b>Agency</b>	Local Project	<b>Project Type</b>	Bicycle/pedestrian facilities
<b>Project Category</b>	Emission Reduction Strategy	<b>Functional Class</b>	NA
<b>Conformity Status</b>	Programmatically Conforming	<b>Physical Data</b>	NA
<b>CIP/CTP Page#</b>	NA		

Description	Justification
A program for pedestrian overpasses in the vicinity of schools.	The construction of pedestrian bridges will eliminate the need for school buses and be cost effective within 1 to 3 years. The project also provides secondary benefits to the community for safe crossings to school, recreation and shopping destinations, and it will reduce the potential of pedestrian accidents on busy streets. Projects include Centennial Lane, Montgomery Road and US 1. Grants represent construction funding from TEA-21 Transportation Enhancement Program.

**Enhancement Funds under STP**

Phase	Previous Requests		Annual Element		Federal Funding Requests						Project Totals
	Previous Federal Funds	Previous Matching Funds	FY 2005 Federal Funds	FY 2005 Matching Funds	FY 2006 Federal Funds	FY 2006 Matching Funds	FY 2007 Federal Funds	FY 2007 Matching Funds	FY 08-09 Federal Funds	FY 08-09 Matching Funds	Estimated Project Total
CON							\$120	\$230	\$75	\$350	\$775
OTH					\$20	\$35				\$5	\$60
PE										\$50	\$50
PP											\$0
ROW								\$20	\$80		\$100
<b>Totals</b>	<b>\$0</b>	<b>\$0</b>	<b>\$0</b>	<b>\$0</b>	<b>\$20</b>	<b>\$35</b>	<b>\$120</b>	<b>\$250</b>	<b>\$155</b>	<b>\$405</b>	<b>\$985</b>

2005 - 2009 Transportation Improvement Program

Howard County

Highway Preservation

**Bridge Repairs/Deck Replacement**

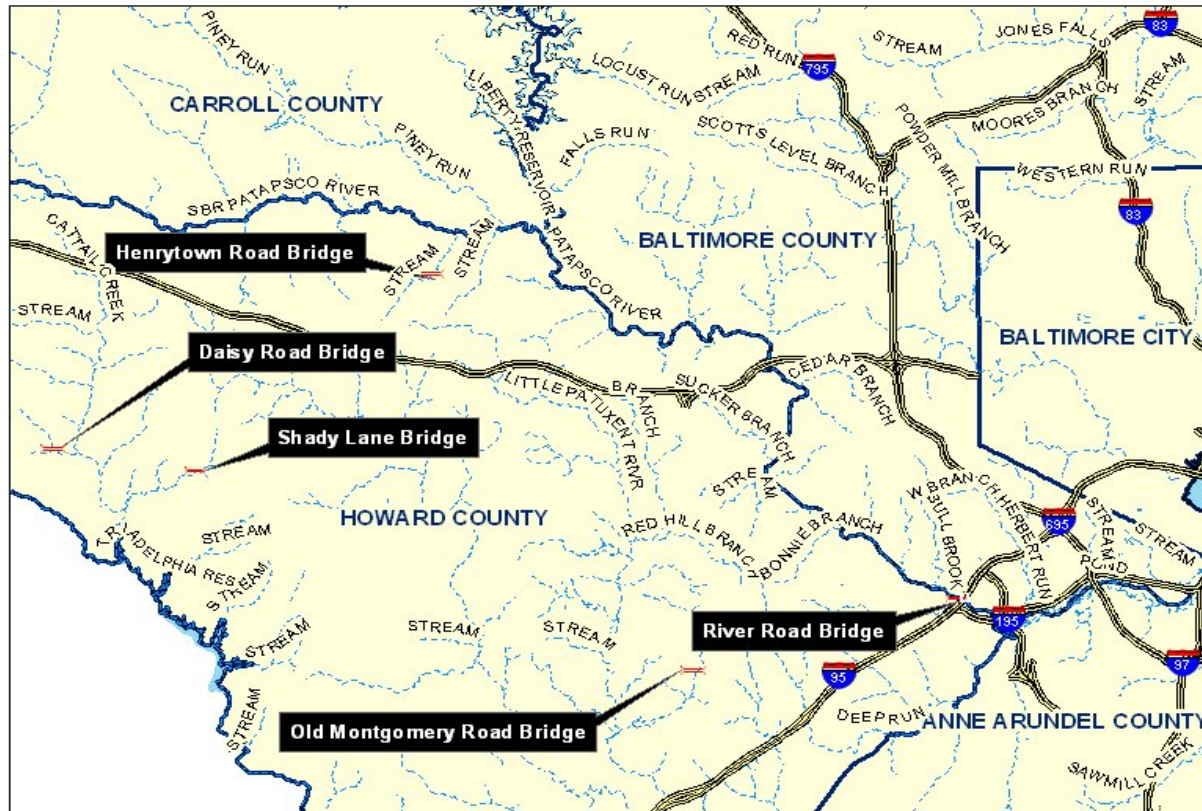
<b>TIP Id #</b>	16-0436-13	<b>Year of Operation</b>	Ongoing
<b>Agency</b>	Local Project	<b>Project Type</b>	Bridge repair/deck replacement
<b>Project Category</b>	Highway Preservation	<b>Functional Class</b>	NA
<b>Conformity Status</b>	Programmatically Conforming	<b>Physical Data</b>	NA
<b>CIP/CTP Page#</b>	NA		

<b>Description</b>	<b>Justification</b>
This project is to repair/replace bridge decks at the following locations: Bethaney Lane at Little Patuxent River, Bonnie Branch Road at Bonnie Branch, Henryton Road over a tributary to the Patapsco River, Pindell School at Hammond Branch, Daisy Road at Cattail Creek, Daisy Road B3849, and Old Montgomery Road at Deep Run.	This project will alleviate bridge deterioration, prevent future deterioration and improve the safety and longevity of all bridges included in the bridge repair and rehabilitation program. The local match for many of these projects exceeds the 80 percent/20 percent federal/local match ratio for the local share of funds.

**Bridge Replacement and Rehabilitation**

<b>Phase</b>	<b>Previous Requests</b>		<b>Annual Element</b>		<b>Federal Funding Requests</b>						<b>Project Totals</b>
	<b>Previous Federal Funds</b>	<b>Previous Matching Funds</b>	<b>FY 2005 Federal Funds</b>	<b>FY 2005 Matching Funds</b>	<b>FY 2006 Federal Funds</b>	<b>FY 2006 Matching Funds</b>	<b>FY 2007 Federal Funds</b>	<b>FY 2007 Matching Funds</b>	<b>FY 08-09 Federal Funds</b>	<b>FY 08-09 Matching Funds</b>	<b>Estimated Project Total</b>
CON	\$1,240	\$491	\$1,440	\$320	\$530	\$70				\$1,400	\$5,491
OTH		\$41		\$50		\$10					\$101
PE	\$194	\$475	\$30	\$90		\$290				\$145	\$1,224
PP											\$0
ROW		\$178		\$30				\$75			\$283
<b>Totals</b>	<b>\$1,434</b>	<b>\$1,185</b>	<b>\$1,470</b>	<b>\$490</b>	<b>\$530</b>	<b>\$370</b>	<b>\$0</b>	<b>\$75</b>	<b>\$0</b>	<b>\$1,545</b>	<b>\$7,099</b>

**RIVER ROAD, OLD MONTGOMERY ROAD, SHADY LANE, DAISY ROAD  
AND HENRYTOWN ROAD BRIDGE REPAIR/DECK REPLACEMENT**



Source: Baltimore Metropolitan Council